

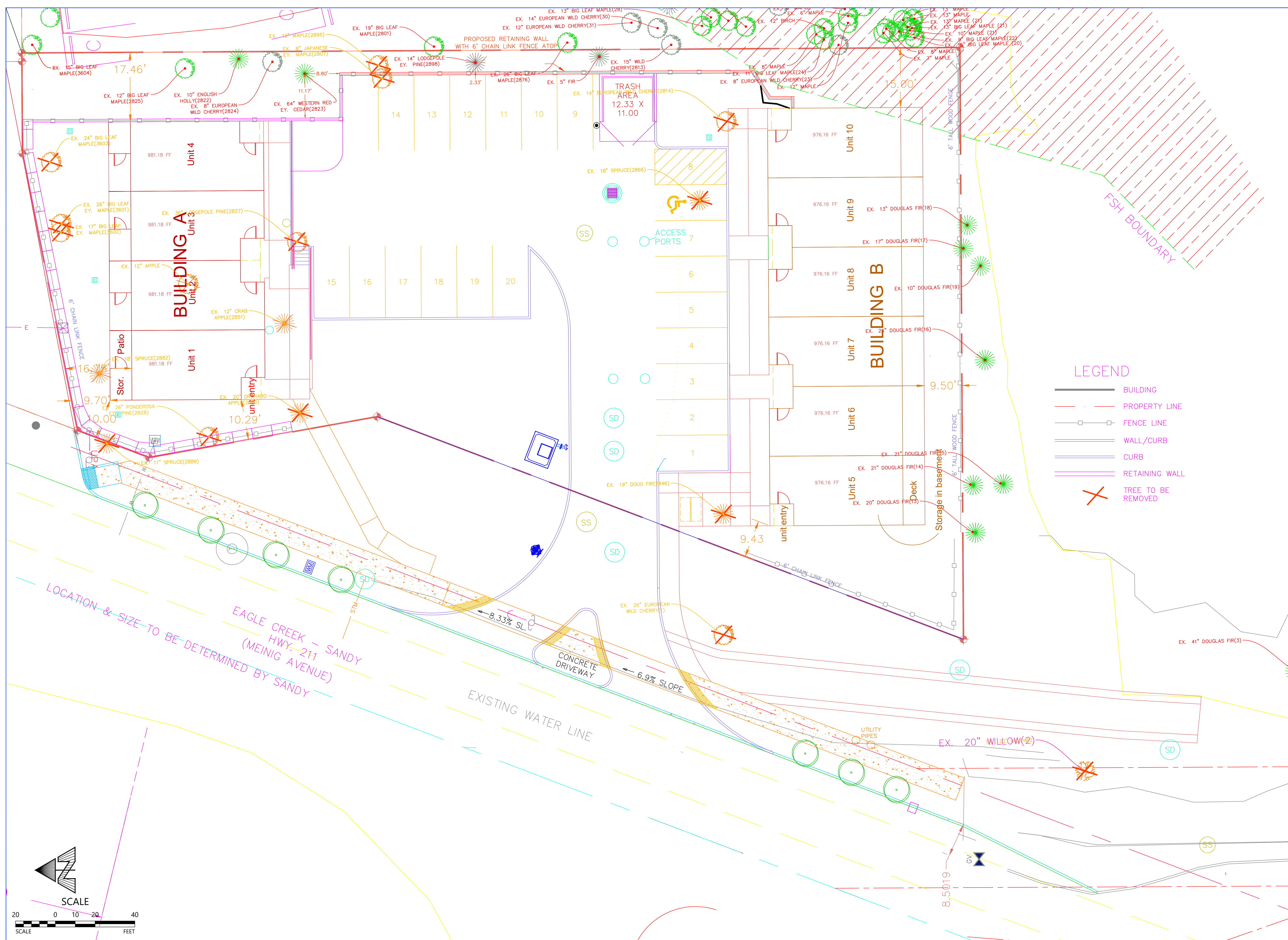
**THE PAD**  
**TOWNHOME APARTMENTS**  
17650 MEINING AVE  
SANDY, OR 97055

REVISIONS

No.	Description	Date

DRAWN BY: GTK  
CHECKED BY: GTK  
JOB NO: 20-004  
DATE: 10/11/2022  
ISSUED FOR: DESIGN REVIEW  
SHEET TITLE  
PRIVATE TREE  
PRESERVATION PLAN

SHEET NO.  
**6.0**



**LEGEND**

- BUILDING
- PROPERTY LINE
- FENCE LINE
- WALL/CURB
- CURB
- RETAINING WALL
- X TREE TO BE REMOVED

LOCATION & SIZE TO BE DETERMINED BY SANDY  
EAGLE CREEK - SANDY  
HWY. 241  
(MEINING AVENUE)

EXISTING WATER LINE

