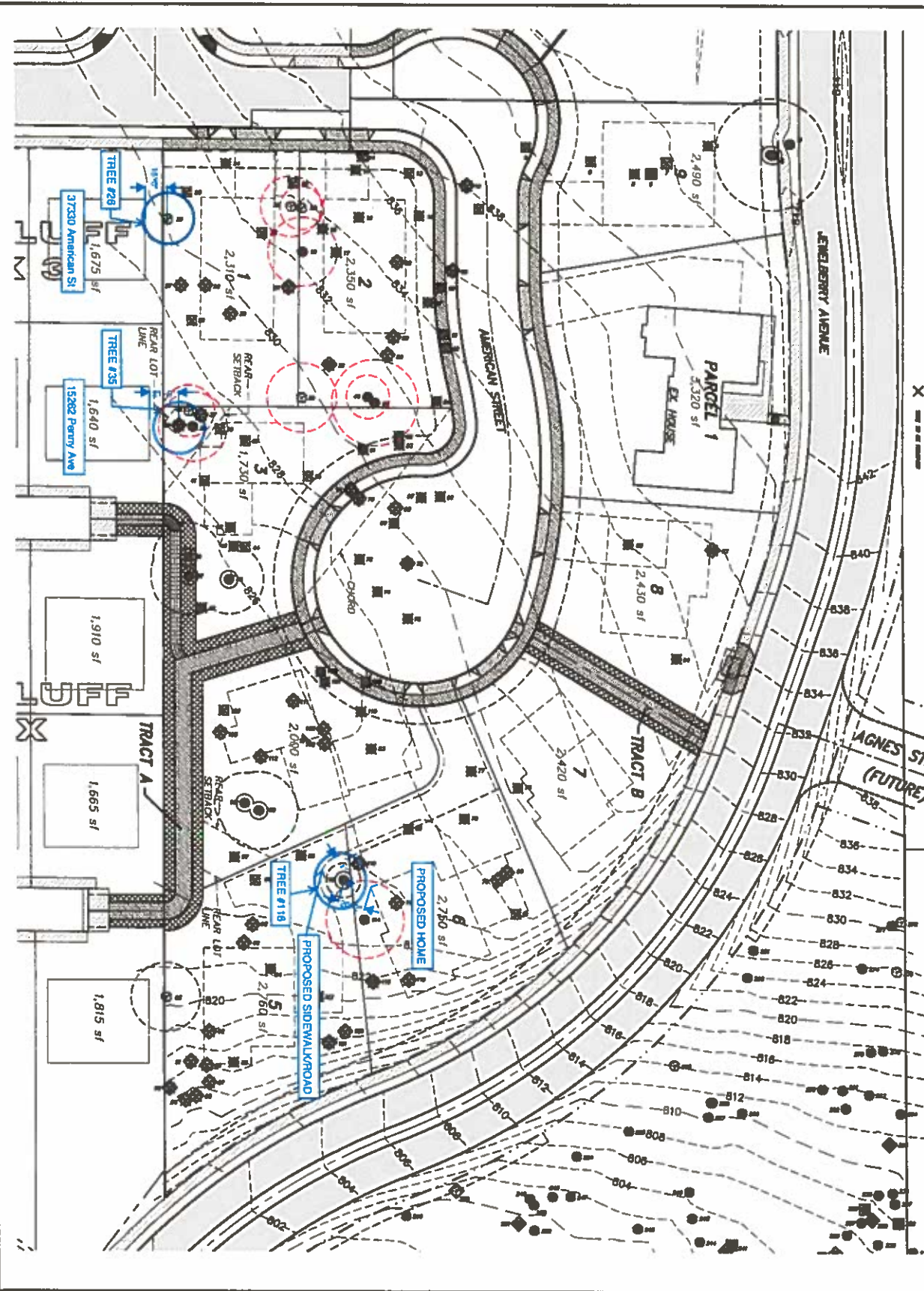


TREE LEGEND

TREE ASSESSED BY TRACAN & ASSOCIATES, INC. ON 4/18/22

SITE PLAN PROVIDED BY 4-J LAND, 4-J LAND CAPITAL HOLDINGS, INC., 4-J LAND DEVELOPMENT, INC., 4-J LAND HOLDINGS, INC., 4-J LAND INVESTMENTS, INC., 4-J LAND MANAGEMENT, INC., 4-J LAND OPERATIONS, INC., 4-J LAND SERVICES, INC., 4-J LAND TRADING, INC., 4-J LAND VENTURES, INC., 4-J LAND HOLDINGS II, INC., 4-J LAND HOLDINGS III, INC., 4-J LAND HOLDINGS IV, INC., 4-J LAND HOLDINGS V, INC., 4-J LAND HOLDINGS VI, INC., 4-J LAND HOLDINGS VII, INC., 4-J LAND HOLDINGS VIII, INC., 4-J LAND HOLDINGS IX, INC., 4-J LAND HOLDINGS X, INC., 4-J LAND HOLDINGS XI, INC., 4-J LAND HOLDINGS XII, INC., 4-J LAND HOLDINGS XIII, INC., 4-J LAND HOLDINGS XIV, INC., 4-J LAND HOLDINGS XV, INC., 4-J LAND HOLDINGS XVI, INC., 4-J LAND HOLDINGS XVII, INC., 4-J LAND HOLDINGS XVIII, INC., 4-J LAND HOLDINGS XIX, INC., 4-J LAND HOLDINGS XX, INC., 4-J LAND HOLDINGS XXI, INC., 4-J LAND HOLDINGS XXII, INC., 4-J LAND HOLDINGS XXIII, INC., 4-J LAND HOLDINGS XXIV, INC., 4-J LAND HOLDINGS XXV, INC., 4-J LAND HOLDINGS XXVI, INC., 4-J LAND HOLDINGS XXVII, INC., 4-J LAND HOLDINGS XXVIII, INC., 4-J LAND HOLDINGS XXIX, INC., 4-J LAND HOLDINGS XXX, INC.



<p>SIBUL ENGINEERING 875 PORTLAND AVENUE GLADSTONE, OREGON 97027 (503) 667-0188</p>	<p>Tree Preservation Plan</p>	<p>Jewelberry Ridge</p>	<p>4-J Land Co., LLC</p>	<p>DATE: MAR. 2016</p>	<p>SCALE: 1" = 30'</p>	<p>DRAWN: PS</p>	<p>CAD: SCLD05-046</p>	<p>SHEET: 4.1</p>	<p>OF 12 SHEETS</p>
				<p>REVISIONS:</p>	<p>DATE:</p>	<p>BY:</p>	<p>APPROVED:</p>		