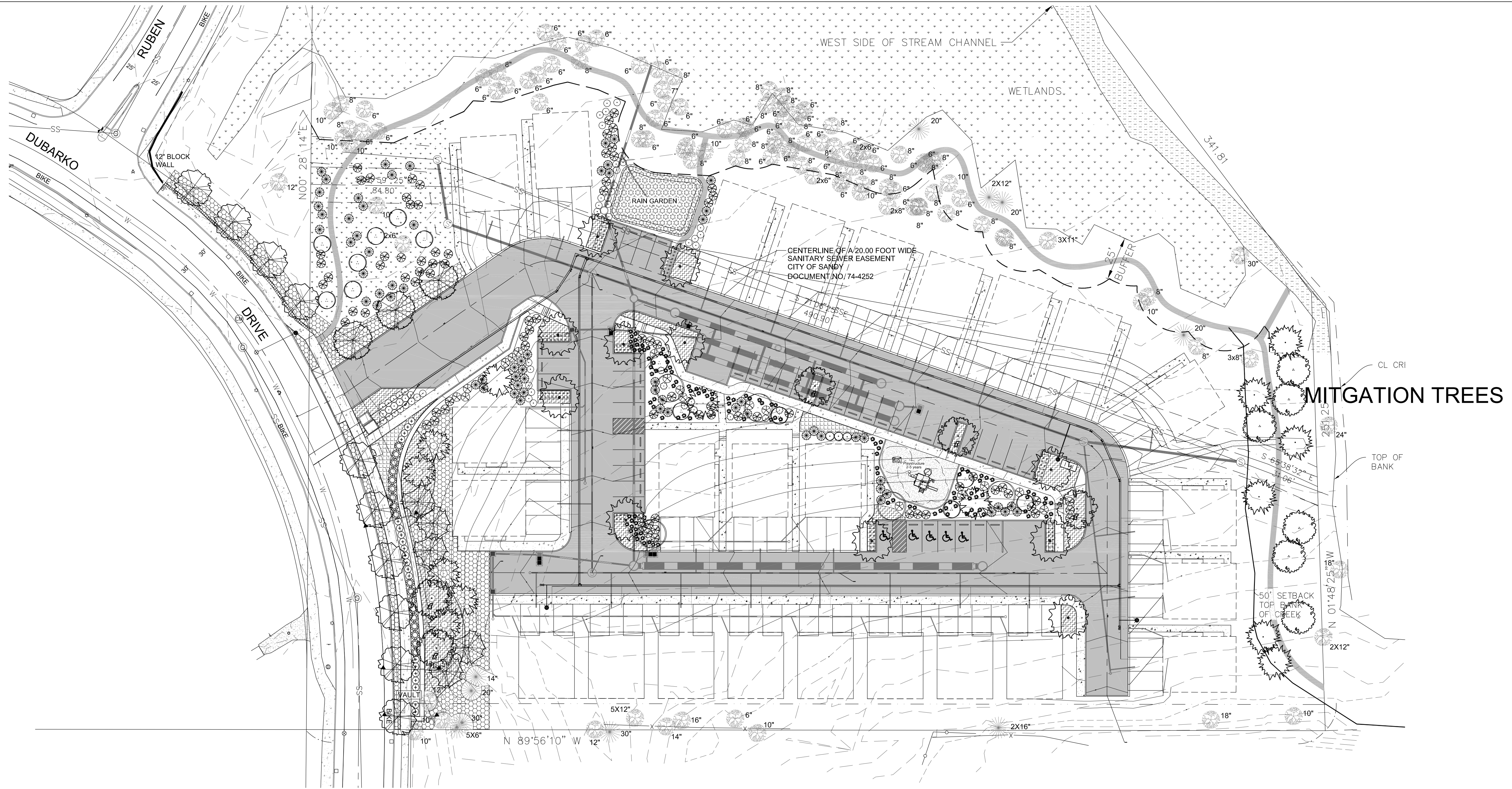




**TICKLE CREEK APARTMENTS**  
COMMON AREA LANDSCAPE PLAN

GLC HOMES  
DUBARKO DRIVE, SANDY, OREGON



**SUGGESTED PLANT MATERIALS LISTING:**

SYM	TREES	QTY.	SIZE	CONDITION	REMARKS
⊙	Acer circinatum Vine Maple	13	6-7"	B&B	Multi-stem Collected
⊙	Calocedrus decurrens Incense Cedar	6	6-7"	B&B	Mitigation Tree
⊙	Calocedrus decurrens Incense Cedar	5	6-7"	B&B	
⊙	Cercidiphyllum japonicum Katsura	11	1.5" Cal.	B&B	
⊙	Chamaecyparis lawsoniana Port Orford Cedar	8	6-7"	B&B	

**SUGGESTED PLANT MATERIALS LISTING:**

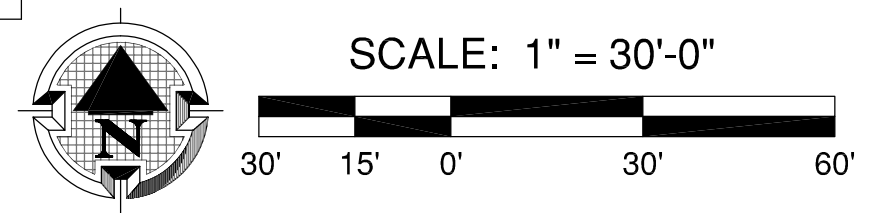
SYM	TREES	QTY.	SIZE	CONDITION	REMARKS
⊙	Cornus kousa Kousa Dogwood	5	1.5" Cal.	B&B	
⊙	Crataegus phaenopyrum Washington Hawthorn	10	1.5" Cal.	B&B	
⊙	Populus tremuloides Quaking Aspen	6	1.5" Cal.	B&B	Mitigation Tree
⊙	Styrax japonica Japanese Snowbell	5	1.5" Cal.	B&B	
⊙	Tilia cordata 'Greenspire' Greenspire Linden	3	1.5" Cal.	B&B	

**SUGGESTED PLANT MATERIALS LISTING:**

SYM	SHRUBS	QTY.	SIZE	CONDITION	REMARKS
⊙	Berberis thunbergii 'Rose Glow' Rose Glow Barberry	20	1 Gal	Can	
⊙	Cornus alba 'Elegantissima' Variegated Redtwig Dogwood	66	2 Gal	Can	
⊙	Cornus sericea 'Kelsey' Kelsey Dwarf Redtwig Dogwood	47	1 Gal	Can	
⊙	Euonymus alata Burning Bush	3	5 Gal	Can	
⊙	Euonymus klautschovicus 'Manhattan' Manhattan Euonymus	18	5 Gal	Can	
⊙	Polystichum munitum Sword Fern	117	1 Gal	Can	
⊙	Rhododendron 'Nova Zembla' Nova Zembla Rhododendron	17	18-24"	Can	
⊙	Sarcococca confusa Fragrant Box	81	2 Gal	Can	
⊙	Spiraea Anthony Watereri Anthony Waterer Spiraea	8	1 Gal	Can	

**SUGGESTED PLANT MATERIALS LISTING:**

SYM	GROUND COVER	QTY.	SIZE	CONDITION	SPACING
⊙	Mahonia nervosa Low Oregon Grape	700	1 gal	Can	36" O.C.
⊙	Fragaria chiloensis Coastal Strawberry	770	4"	Pots	30" O.C.
⊙	Rosa Flower Carpet Pink Supreme Pink Supreme Carpet Rose	116	1 gal	Can	24" O.C.
⊙	Native Seed Mix Sunmark Seeds - Native EC Mix	5,600 SF		Hydroseed	1 lbs. / 1000 sf
⊙	Native Seed Mix Sunmark Seeds - Native Swale Mix	1,542 SF		Hydroseed	1 lbs. / 1000 sf
⊙	Playground Safety Surfacing, Engineered Wood Chips	1,160 SF (12" min. depth)			
⊙	Wood chips - 4" depth minimum	3,100 SF			



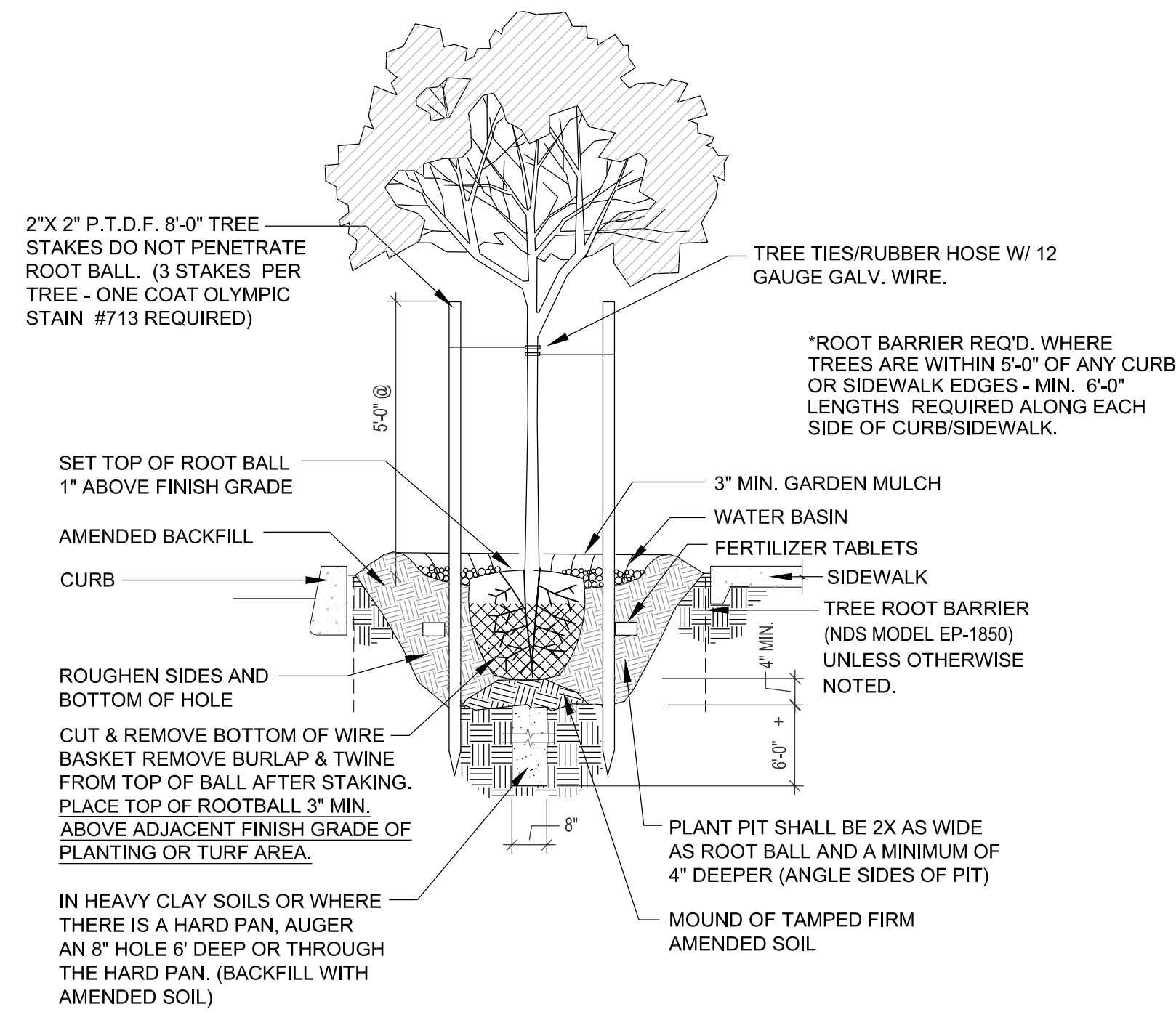
**REVISIONS**

REV.	DATE	DESCRIPTION

SHEET NAME:  
**PLANTING PLAN**

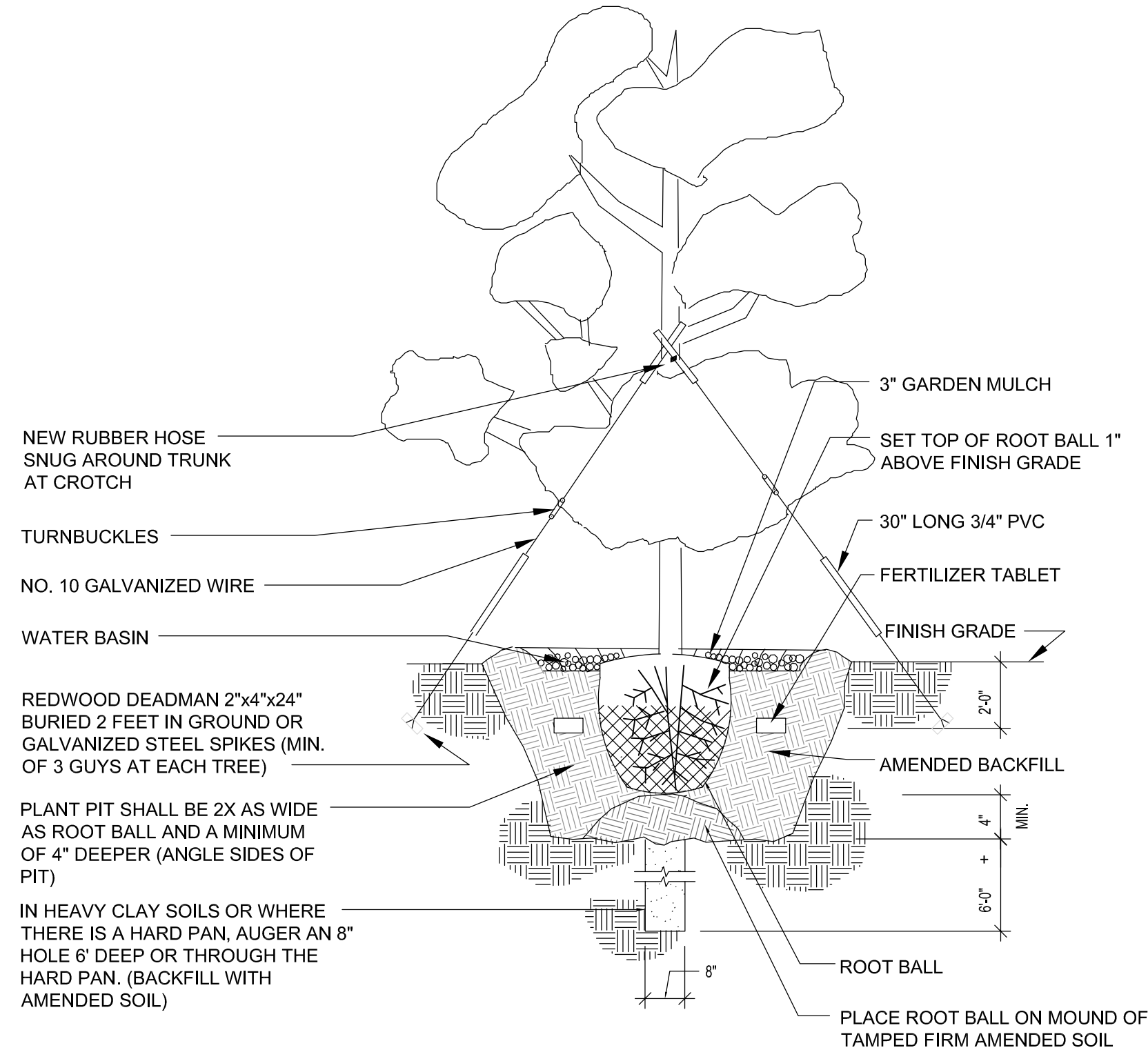
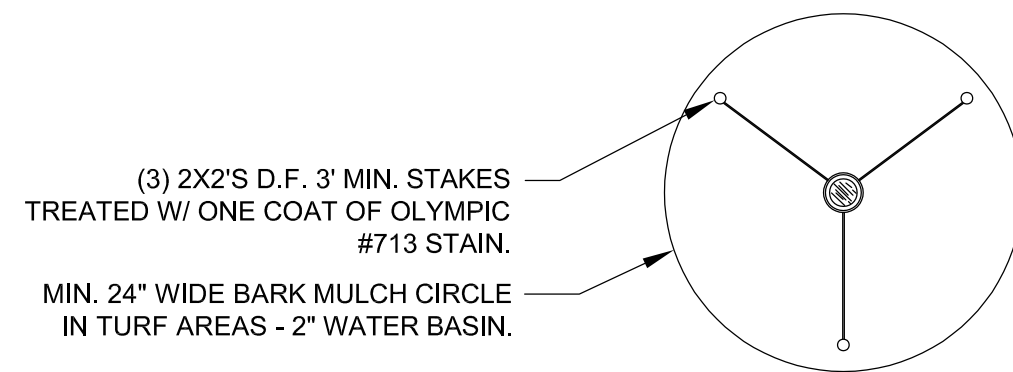
DRAWN BY: \_\_\_\_\_ TM  
CHECKED BY: \_\_\_\_\_ TM  
ISSUE DATE: 01/21/2022  
JOB NO.: 2201

SHEET:  
**L1.1**  
OF 2



**TREE PLANTING DETAIL**

N.T.S.

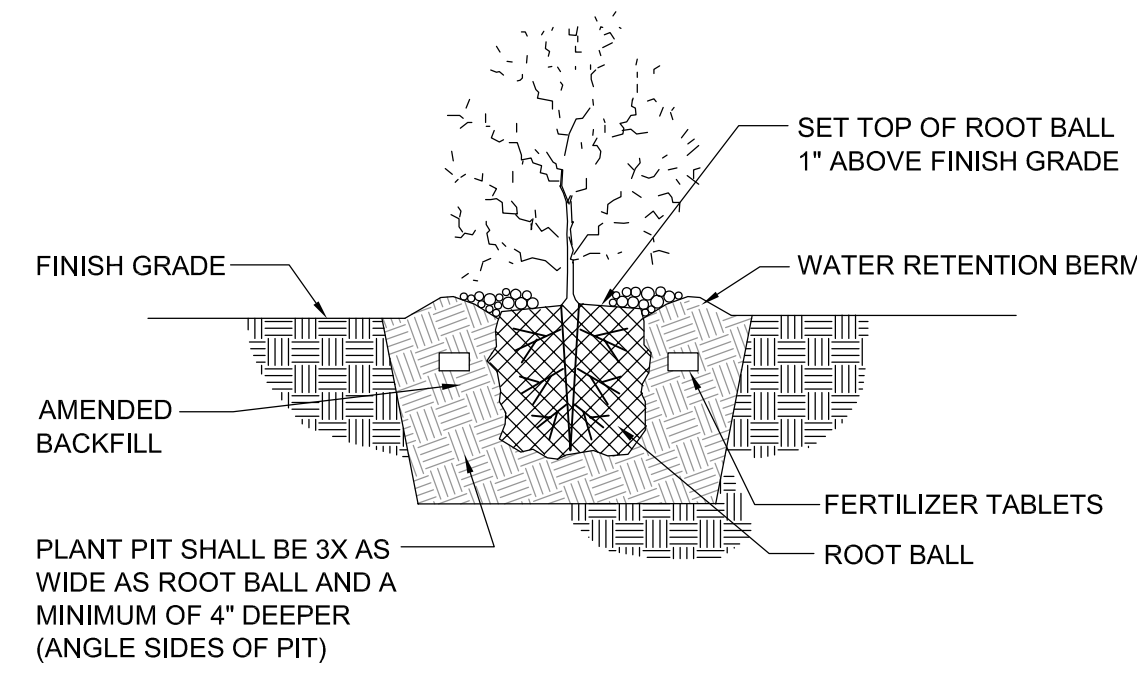


**EVERGREEN TREE PLANTING DETAIL**

N.T.S.

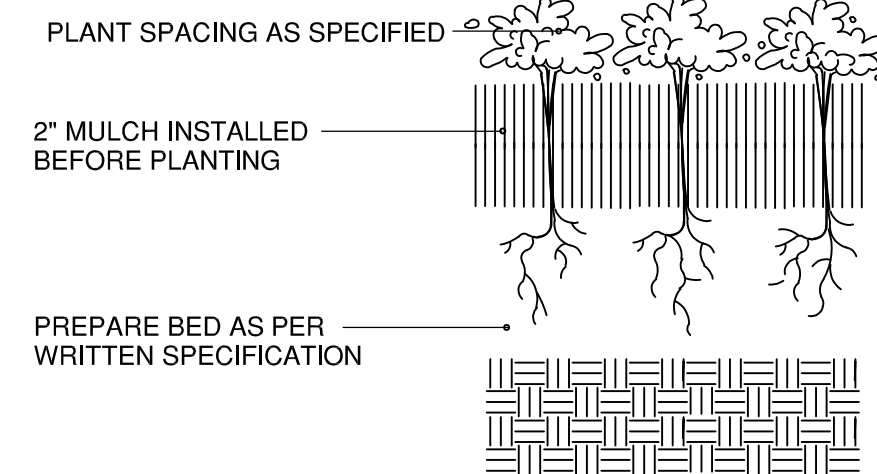
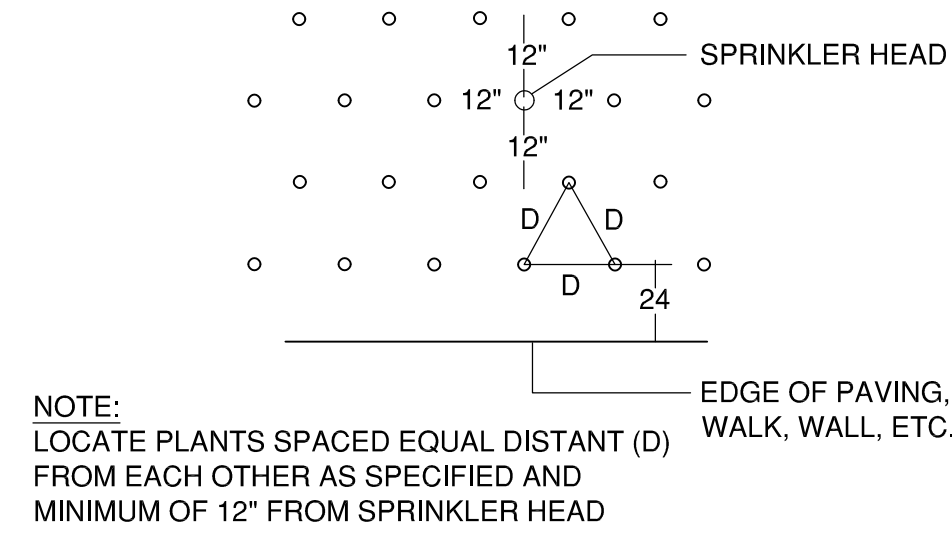
**TYPICAL PLANTING NOTES:**

1. B&B stock may be substituted with container stock of equal grade.
2. Container stock may be substituted with B&B stock of equal grade.
3. Plant material shall conform with American Standard for Nursery Stock, ANSI Z60.1, 2014 edition.
4. All trees shall be branched.
5. Refer to project technical specification for topsoil requirement. All planting beds shall have a minimum of 18 inches topsoil. Re-use of existing topsoil is recommended, but must meet specifications.
6. Garden mulch all planting beds with 3" min. Layer of specified garden mulch.
7. In the event of a discrepancy between this material listing and the drawings, the drawings shall govern the plant species and quantities required.
8. In the event of question or lack of clarity on drawings, Landscape Contractor is to call Landscape Architect before proceeding.
9. Landscape contractor is to notify Landscape Architect prior to installation of plant material to approve final placement.
10. Landscape Contractor to verify plant material quantities.
11. Contractor will provide a one year warranty on all provided & installed plant material from date of final approval by owner's representative.



**SHRUB PLANTING DETAIL**

N.T.S.



**GROUNDCOVER PLANTING DETAIL**

N.T.S.



**TICKLE CREEK APARTMENTS  
 COMMON AREA LANDSCAPE PLAN**

GLC HOMES  
 DUBARKO DRIVE, SANDY, OREGON

REVISIONS		
REV.	DATE	DESCRIPTION

SHEET NAME:  
**PLANTING  
 DETAILS & NOTES**

DRAWN BY: \_\_\_\_\_ TM  
 CHECKED BY: \_\_\_\_\_ TM  
 ISSUE DATE: 01/21/2022  
 JOB NO.: 2201

SHEET:  
**L1.2**  
 OF 2