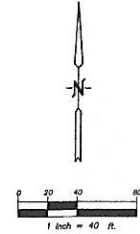


TOPOGRAPHIC SURVEY

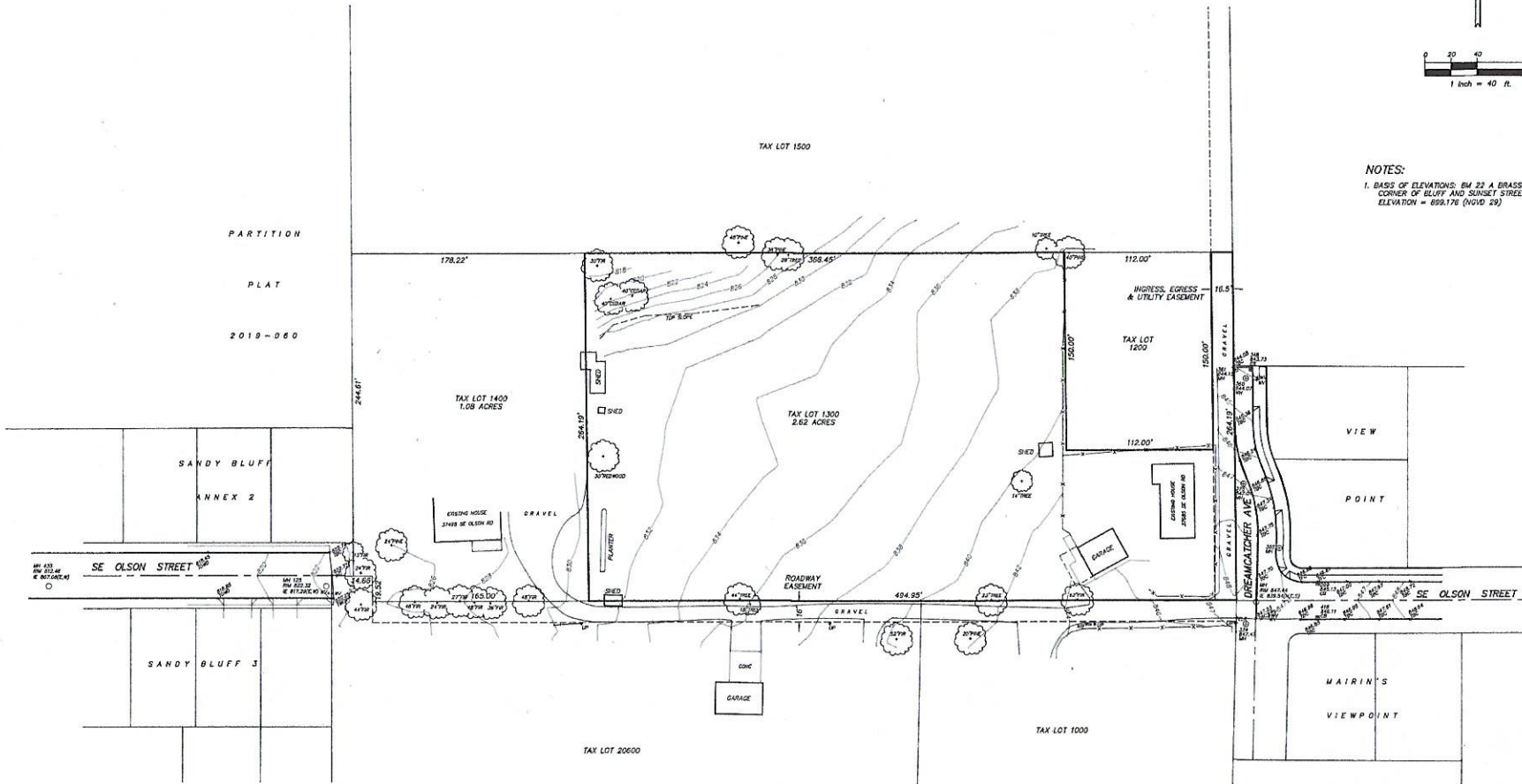
TAX LOT 1300 MAP 24E11A0
 IN THE NE 1/4 SECTION 11, T2S, R4E, W4M
 CLACKAMAS COUNTY, OREGON

APRIL, 2021



NOTES:

1. BASIS OF ELEVATIONS: BM 22 A BRASS DISK AT THE SW CORNER OF BLUFF AND SUNSET STREET. ELEVATION = 699.176 (NGVD 29)



REGISTERED
 PROFESSIONAL
 LAND SURVEYOR
Kenneth D. Griffin
 OREGON
 JULY 28, 1985
 KENNETH D. GRIFFIN
 2147
 RENEWS 4.5/21
 0773 SAUL TOPO

GRIFFIN LAND SURVEYING INC.
 6102 SW ALDRAY BLVD, #409
 BEAVERTON, OR 97008
 (503) 261-3116