

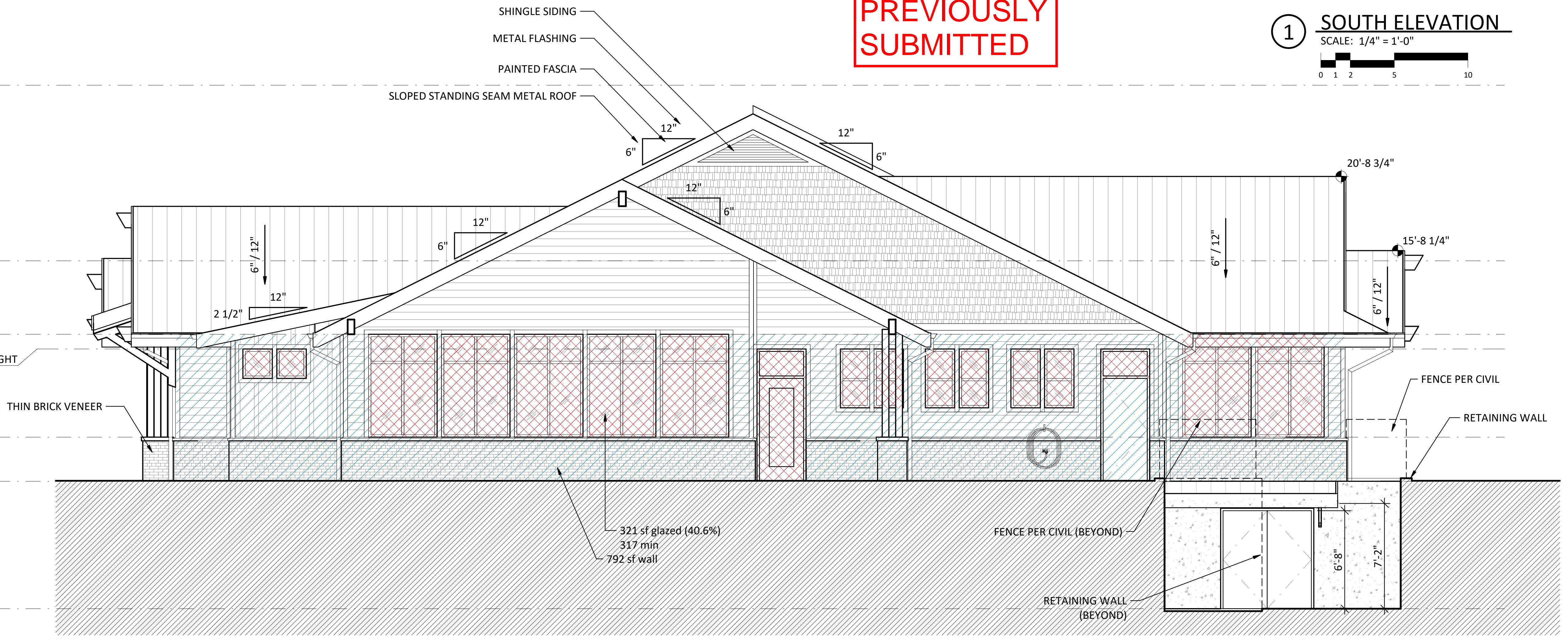
**PREVIOUSLY
SUBMITTED**

1 SOUTH ELEVATION

SCALE: 1/4" = 1'-0"



- TOP OF ROOF
26' - 11 31/128"
- T.O. PARAPET
15' - 0"
- TOP PLATE
10' - 0"
- T.O. TYP. WINDOW HEIGHT
9' - 0"
- T.O. WAINSCOT
3' - 0"
- 1ST FLOOR
0"
- CRAWL SPACE
-8' - 8"

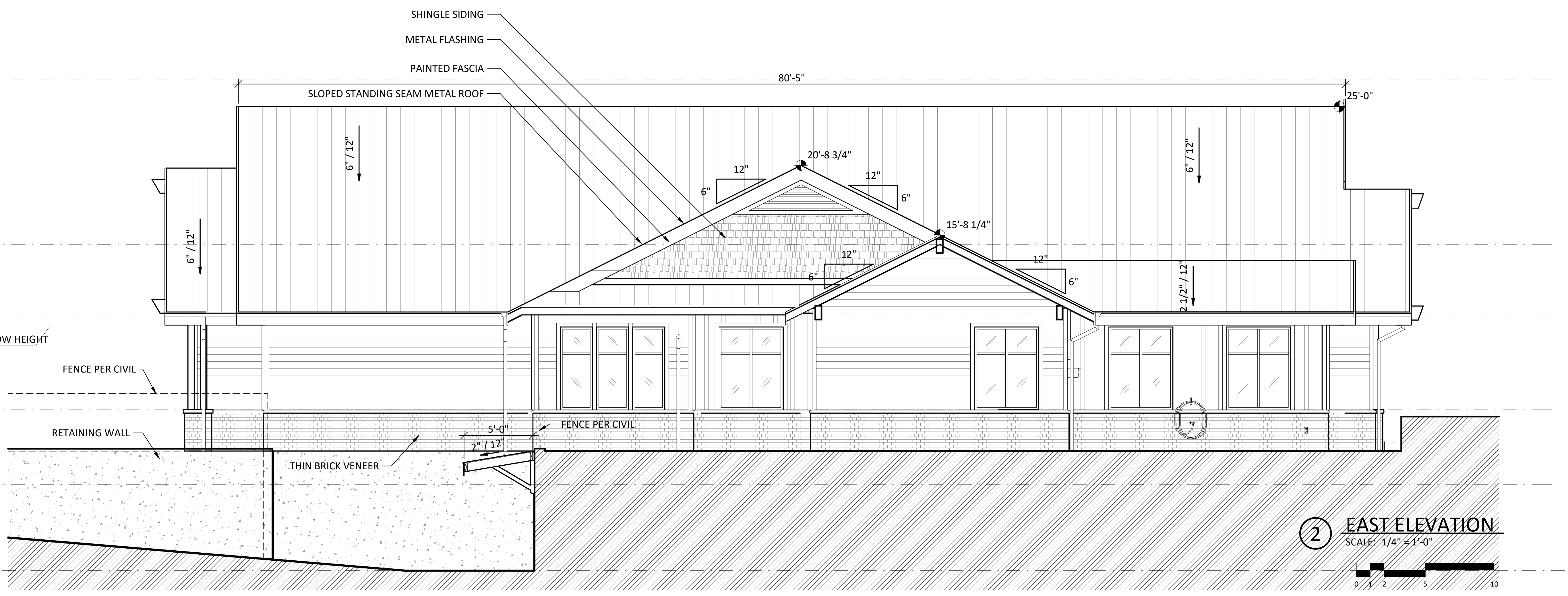


2 EAST ELEVATION

SCALE: 1/4" = 1'-0"



- TOP OF ROOF
26' - 11 31/128"
- T.O. PARAPET
15' - 0"
- TOP PLATE
10' - 0"
- T.O. TYP. WINDOW HEIGHT
9' - 0"
- T.O. WAINSCOT
3' - 0"
- 1ST FLOOR
0"
- T.O. FTNG
-2' - 5 1/4"
- CRAWL SPACE
-8' - 8"



SEAL:
PRELIMINARY
 NOT FOR CONSTRUCTION

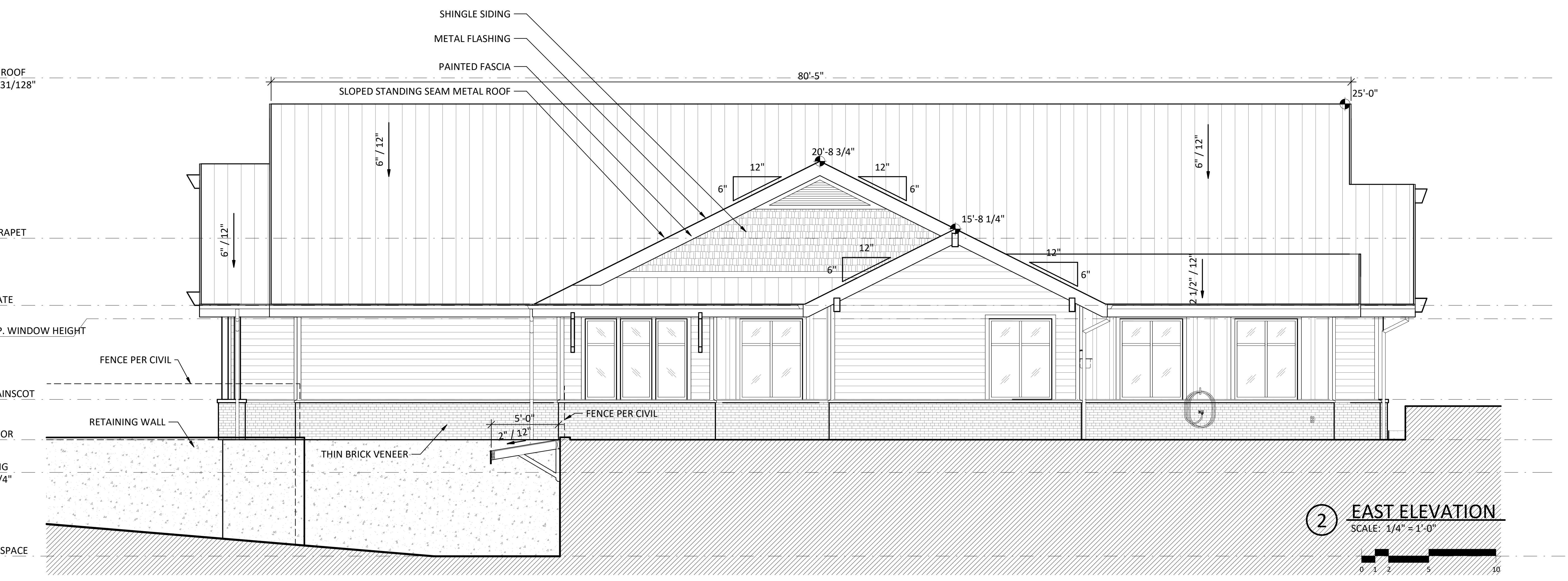
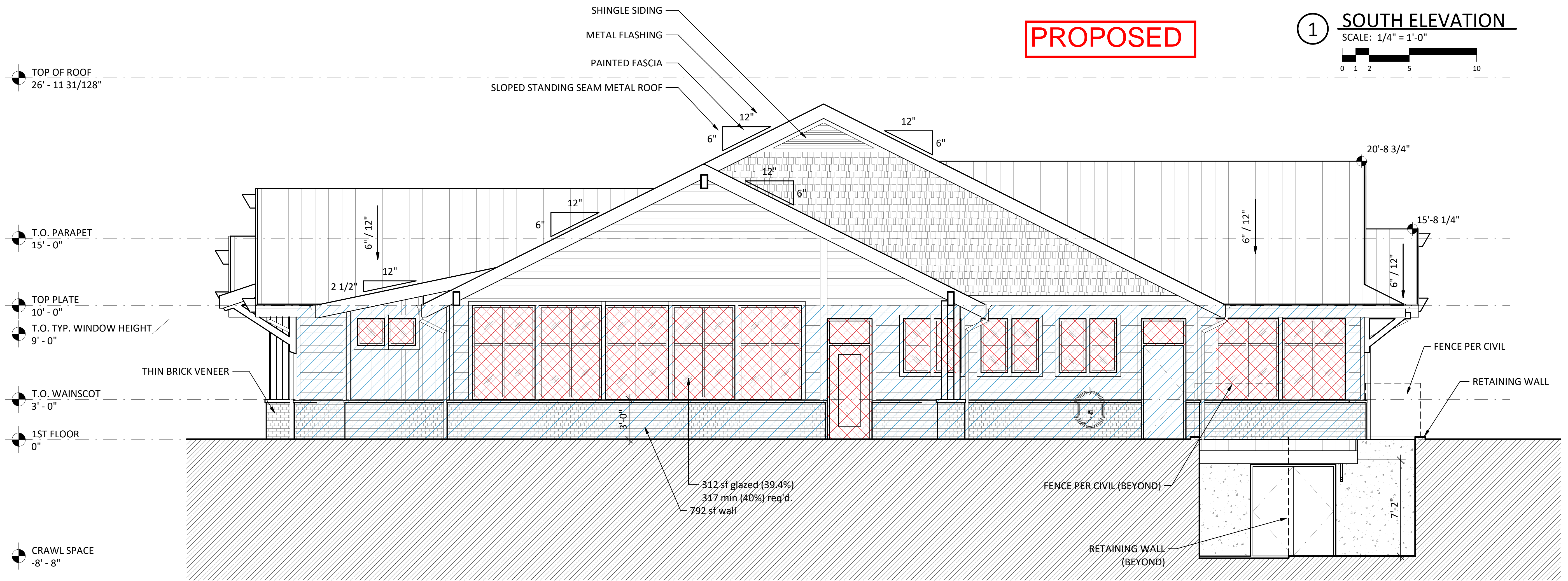
**BARLOW TRAIL
 VETERINARY CLINIC**
 38952 PIONEER BLVD.
 SANDY, OR 97055

JOB NUMBER: 1914
 DRAWN: JTN
 CHECKED: JJP
 DATE: Oct 13th, 2023
 REVISIONS:

SHEET NAME:
 EXTERIOR
 ELEVATIONS

PRELIMINARY
 SHEET NUMBER:

A4.2



SEAL:
PRELIMINARY
 NOT FOR CONSTRUCTION

**BARLOW TRAIL
 VETERINARY CLINIC**
 38952 PIONEER BLVD.
 SANDY, OR 97055

JOB NUMBER:	1914
DRAWN:	JM
CHECKED:	JF
DATE:	Jan 1st, 2024
REVISIONS	

SHEET NAME:
EXTERIOR ELEVATIONS

PRELIMINARY
 SHEET NUMBER:

A4.2