

Tree Quantity: 2



December 30, 2022

**Tree Care Service Address/Location**

City of Sandy - Emergency Tree Removals 12-29-2022  
39481 McCormick Dr  
Sandy, 97055  
Tiana Rundell  
Trundell@ci.sandy.or.us

**Northwest Turf & Tree**

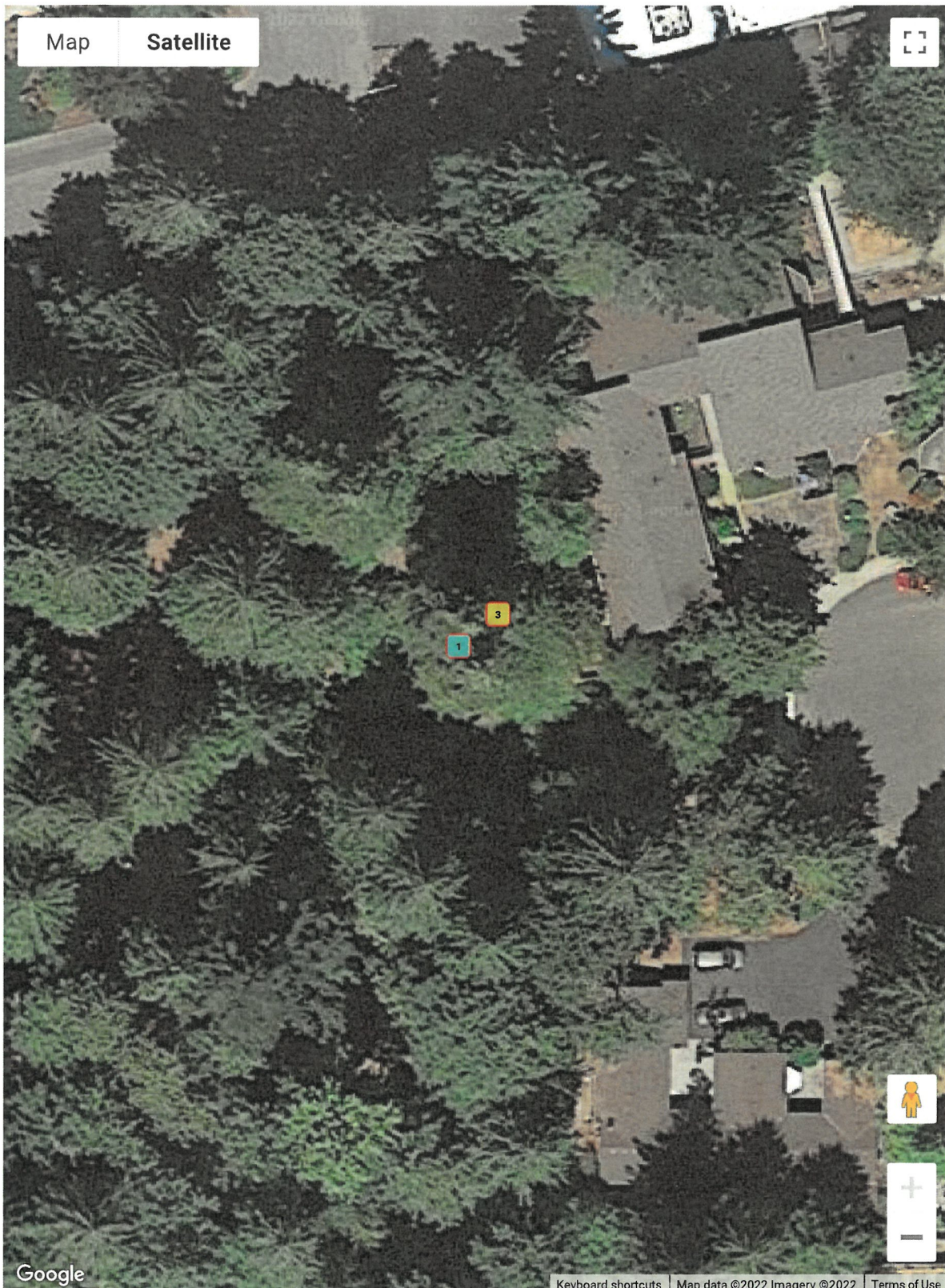
PO Box 1310  
Clackamas, Oregon 97015  
Jeremy (Beau) Saucedo  
ISA Certified Arborist PN-6893-A  
jeremy.saucedo@nwturftree.com  
tel:971-710-8266

	Species	Qty	Height	DBH	Service	
■ #1	Grand Fir	1	110	42	Removal / Flush Cut	
■ #3	Sweet Cherry	1	50	14	Removal / Flush Cut	

Site map location



City of Sandy - Emergency Tree Removals 12-29-2022



Legend (2)

- Sweet Cherry (1)
- Grand Fir (1)

Google

Keyboard shortcuts | Map data ©2022 Imagery ©2022 | Terms of Use



12/30/2022

**Northwest Turf and Tree**

**Jeremy (Beau) Saucedo - ISA Certified Arborist PN-6893-A**

**Retro Active Permit – Hazardous Grand Fir and Sweet Cherry**

**17670 Meinig Ave, Sandy Oregon 97005**

**Meinig Memorial Park**

**We are requesting the removal of (2) Hazardous trees, #1 being a Grand Fir, approx. 110' and tree #3 being a Sweet Cherry Tree (invasive species). (Please note each tree number on this is generated from our attached map)**

**During our recent storm we had in December of 2022, the park had one tree uproot into the adjacent apartment complex. When this tree uprooted, it had compromised the adjacent tree's root systems, #3 in it is actively failing, and is leaning into another tree and towards the building at the apartment complex which has multiple targets below. (See Picture).**

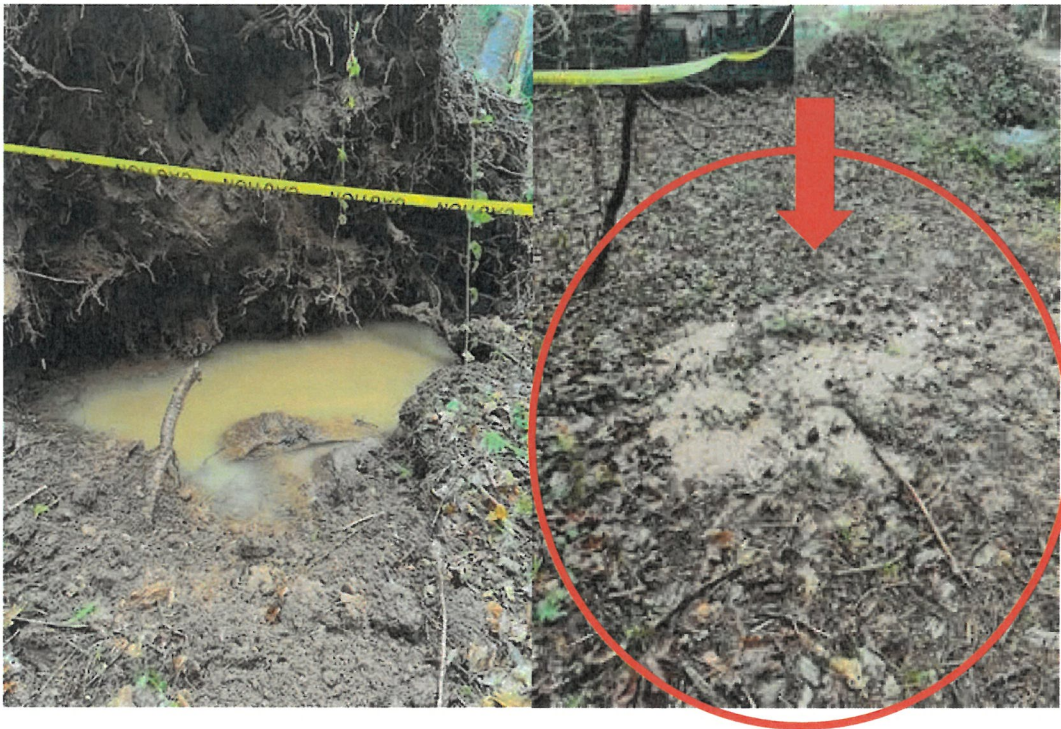


Tree #3 Sweet Cherry Uprooting and lodged into an adjacent tree.

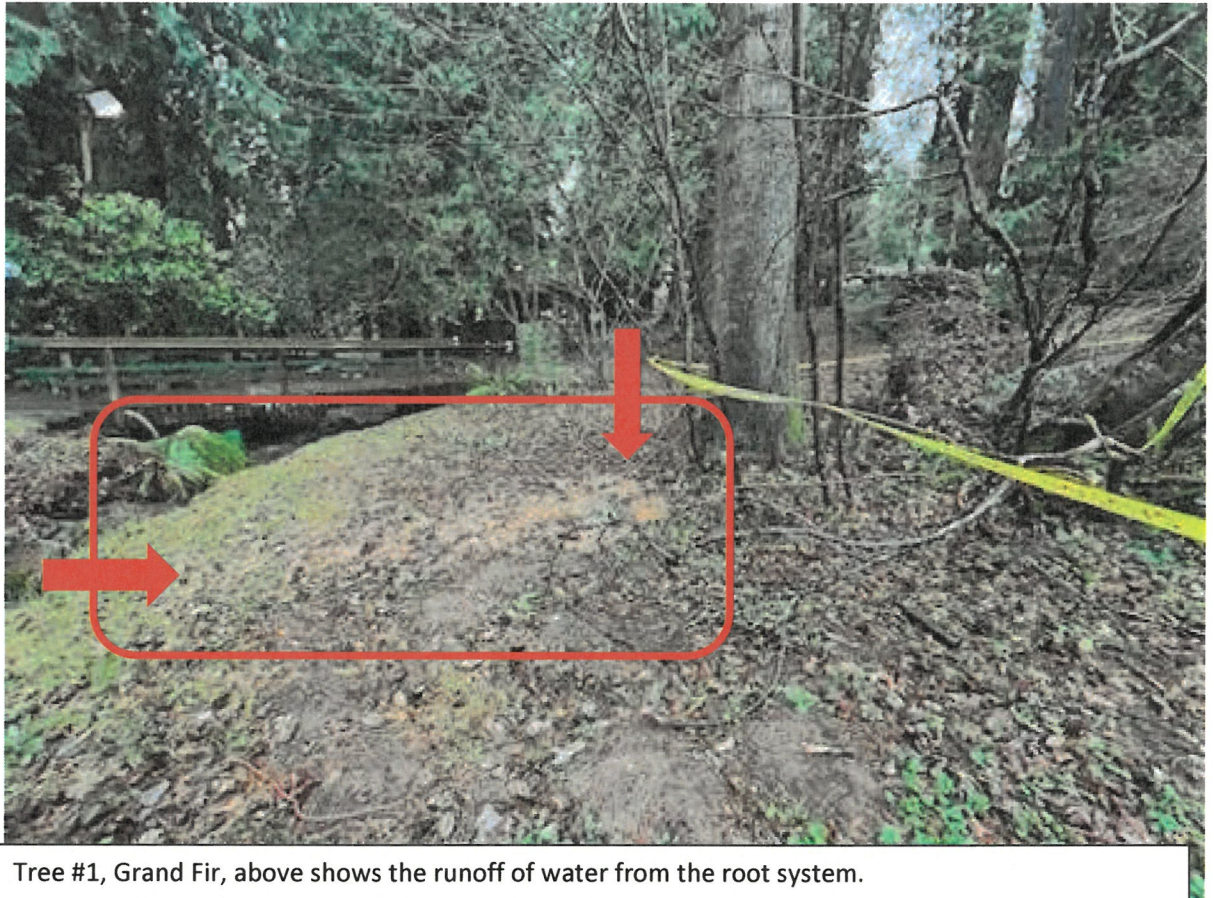


12/30/2022

The larger tree in questions is a Grand Fir Tree #1, This fir tree's root system is very compromised, as we can see in the pictures of the standing water from the uprooted tree, has leached into this large standing grand fir, now this is creating water to flow from the root plate of the standing tree (see pictures), it's only a matter of time before this tree fails, especially coming into the winter/rainy months. We are seeking Immediate approval for the removal of this tree, as we have numerous targets in range, and don't want another tree to fail onto a unit.



Picture of the left is of the uprooted tree, this shows the amount of sitting water within the root plate of this tree, this root plate is withing 2-3' of tree #1's root system as well. Tree #1 is in the top right corner and this is showing the runoff of water coming from under this trees root system.



Tree #1, Grand Fir, above shows the runoff of water from the root system.



Tree #1, Grand Fir, the circle above is showing the abundance of water coming from the root plate below this Grand Fir, this is very concerning as we know there is saturation leaking from the root system that is holding this 110' tree up.

**As for mitigation, we can help facilitate in this, as this is a city park, I'll leave this portion of it up to Tiana and the rest of the team for the city of Sandy.**



12/30/2022

Please don't hesitate to reach out with any questions you may have.

A handwritten signature in black ink, appearing to read "JS", is written over the text "Jeremy (Beau) Saucedo".

Jeremy (Beau) Saucedo

ISA Certified Arborist PN-6893-A

Northwest Turf and Tree

Arbor Division Manager

Jeremy (Beau) Saucedo, ISA Certified Arborist PN-6893-A, [Jeremy.Saucedo@nwturftree.com](mailto:Jeremy.Saucedo@nwturftree.com) 503-453-5459  
PO Box 1310 Clackamas, Oregon 97015