

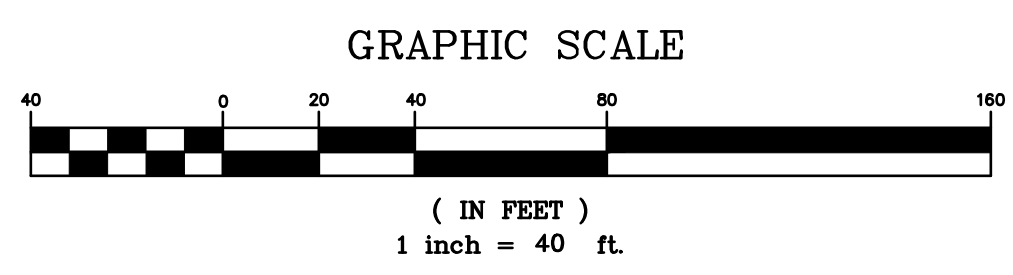
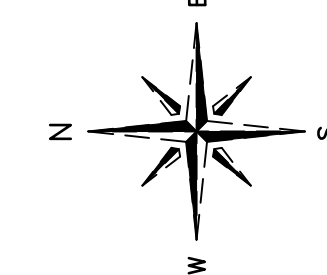
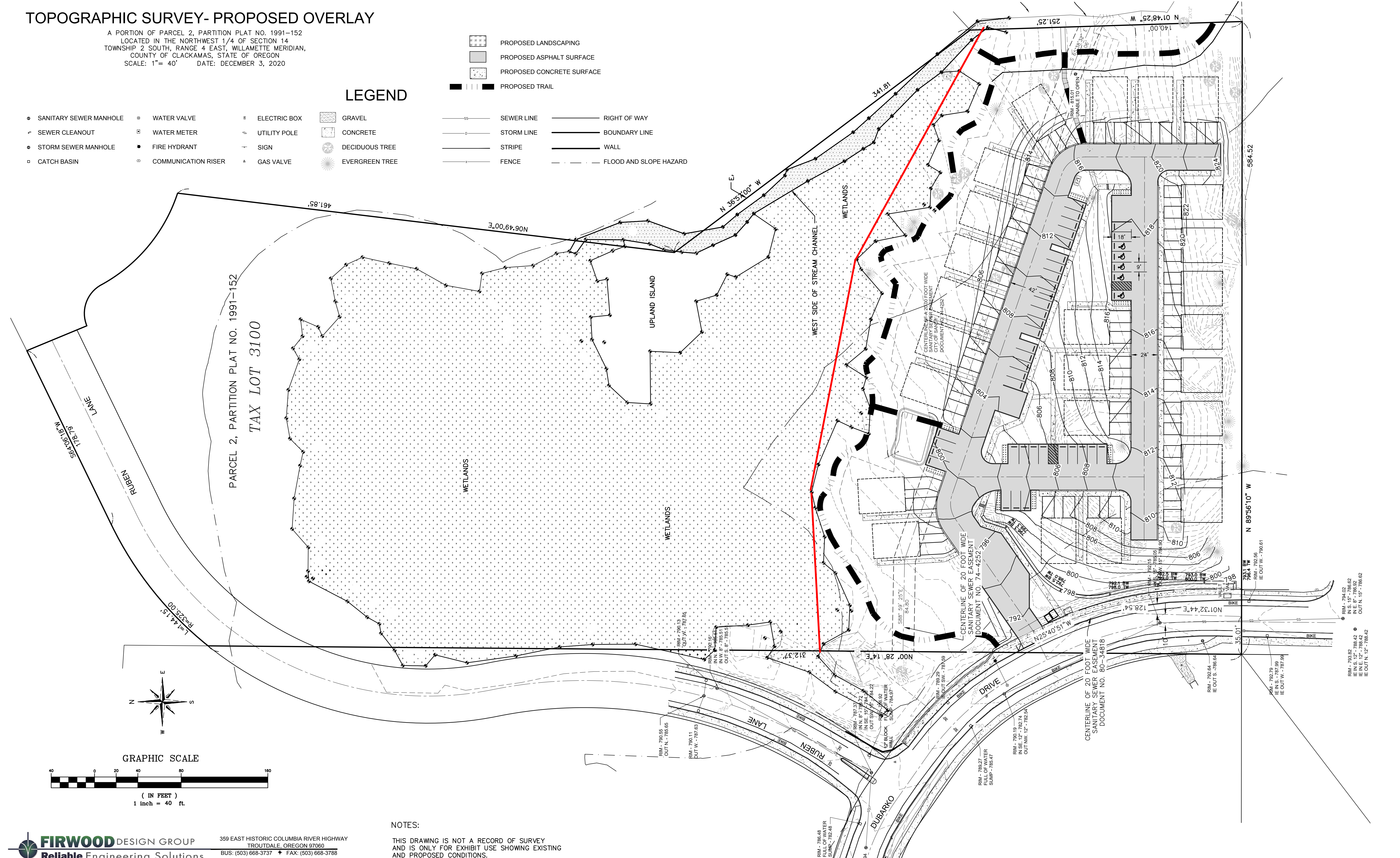
TOPOGRAPHIC SURVEY- PROPOSED OVERLAY

A PORTION OF PARCEL 2, PARTITION PLAT NO. 1991-152
LOCATED IN THE NORTHWEST 1/4 OF SECTION 14
TOWNSHIP 2 SOUTH, RANGE 4 EAST, WILLAMETTE MERIDIAN,
COUNTY OF CLACKAMAS, STATE OF OREGON
SCALE: 1" = 40' DATE: DECEMBER 3, 2020

LEGEND

- | | | | | | |
|--------------------------|-----------------------|----------------|------------------|--------------|--------------------------|
| ● SANITARY SEWER MANHOLE | ○ WATER VALVE | □ ELECTRIC BOX | ▨ GRAVEL | — SEWER LINE | — RIGHT OF WAY |
| ⚡ SEWER CLEANOUT | ⊞ WATER METER | ⊞ UTILITY POLE | ▨ CONCRETE | — STORM LINE | — BOUNDARY LINE |
| ● STORM SEWER MANHOLE | ● FIRE HYDRANT | — SIGN | ● DECIDUOUS TREE | — STRIPE | — WALL |
| □ CATCH BASIN | ○ COMMUNICATION RISER | ⚡ GAS VALVE | ● EVERGREEN TREE | — FENCE | — FLOOD AND SLOPE HAZARD |

- | | | |
|------------------------|----------------------------|-----------------------------|
| ▨ PROPOSED LANDSCAPING | ▨ PROPOSED ASPHALT SURFACE | ▨ PROPOSED CONCRETE SURFACE |
| — PROPOSED TRAIL | | |



NOTES:
THIS DRAWING IS NOT A RECORD OF SURVEY
AND IS ONLY FOR EXHIBIT USE SHOWING
EXISTING AND PROPOSED CONDITIONS.