



2MB

### Proposed Tree Care Services

Tree Quantity: 1

Proposal Value: \$5,400

February 9, 2023

Proposal #: 513364



#### Tree Care Service Address/Location

Tiana - City of Sandy - Hamilton Ridge - Hazardous  
Maple Removal  
37744 Hamilton Ridge Dr  
Sandy, 97055  
Tiana Rundell  
Trundell@ci.sandy.or.us

#### Northwest Turf & Tree

PO Box 1310  
Clackamas, Oregon 97015  
Jeremy (Beau) Saucedo  
ISA Certified Arborist PN-6893-A  
jeremy.saucedo@nwturf.com  
tel:971-710-8266

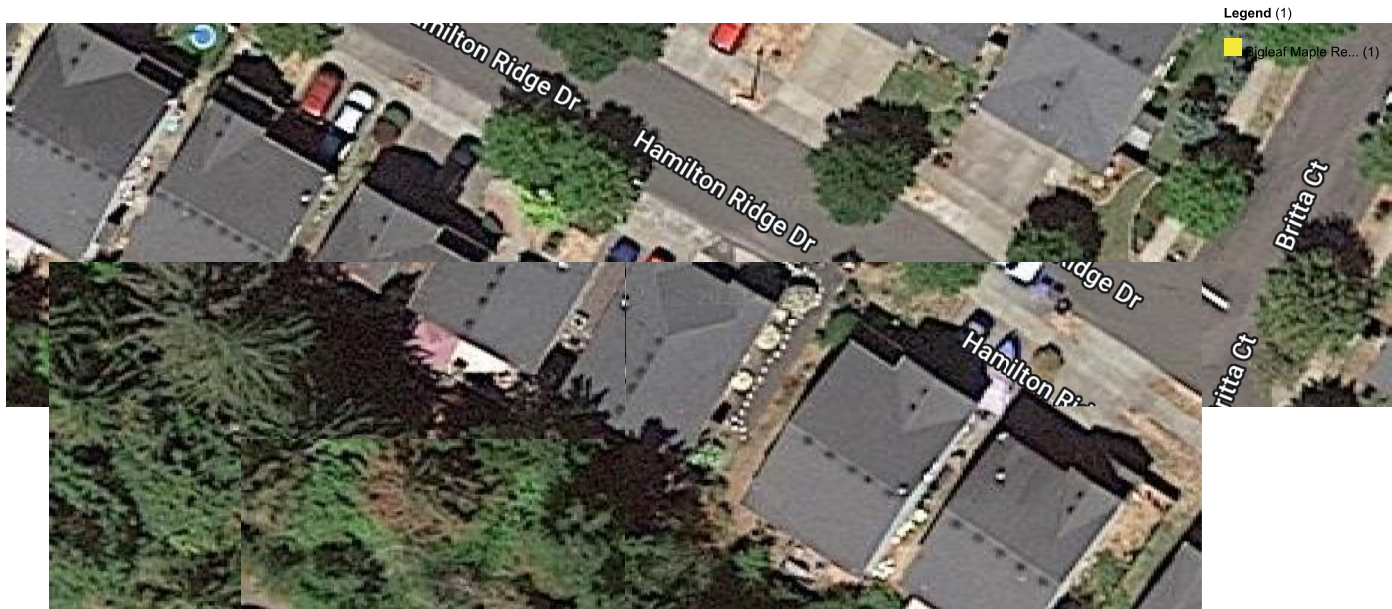
|  | Species               | Qty | Service   | Price          |
|--|-----------------------|-----|---|----------------|
|  | Bigleaf Maple Removal | 1   | Leave a natural habitat spar pole below the target threshold. / Removal | \$5,400        |
|  |                       |     | <b>Total</b>  | <b>\$5,400</b> |

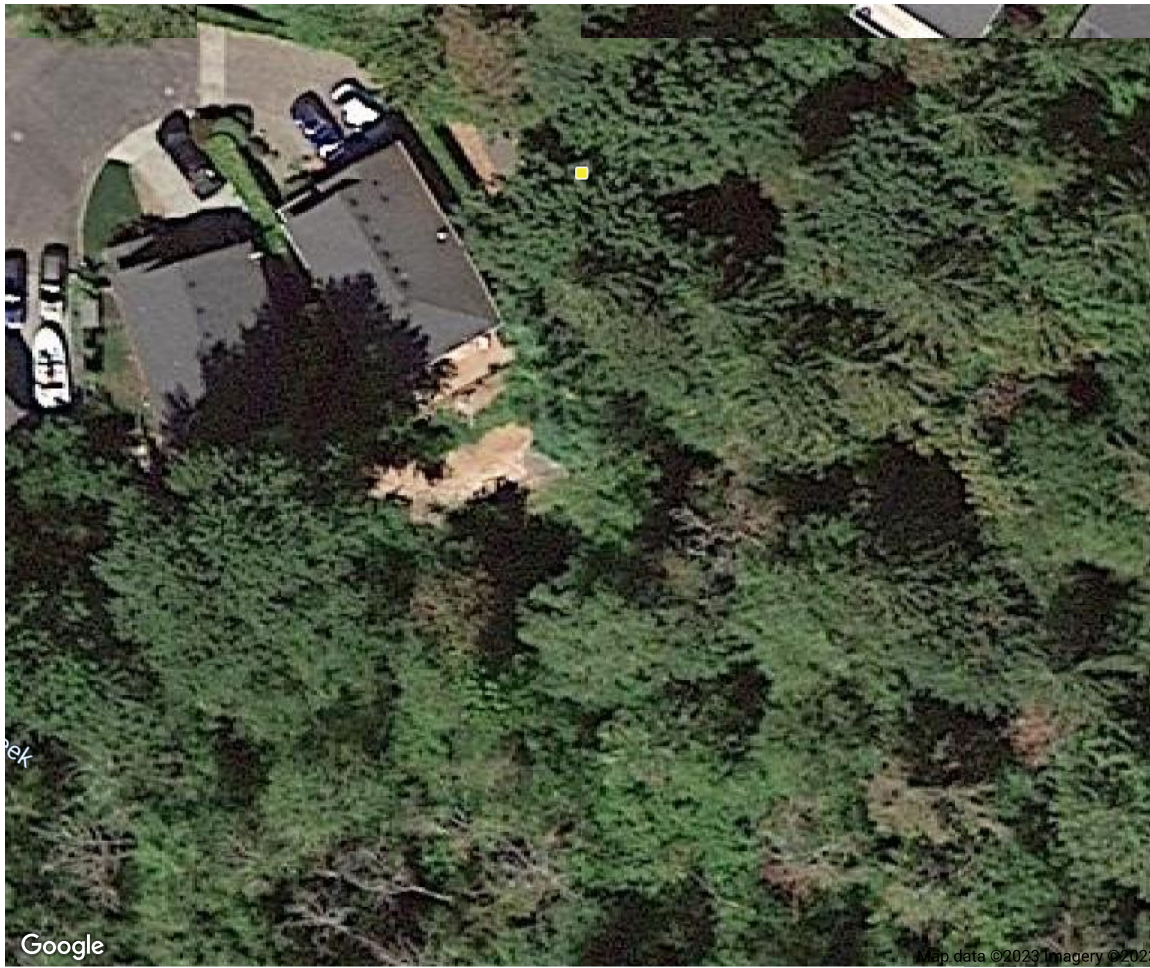
#### Additional Information

Please note - If the city allows we would love to leave some natural habitat logs flat on the ground for natural habitat.



### Tiana - City of Sandy - Hamilton Ridge - Hazardous Maple Removal







### Tiana - City of Sandy - Hamilton Ridge - Hazardous Maple Removal

Proposal #513364 02-09-2023



February 7, 2023

*Bigleaf Maple Removal* ID# 1  
Bigleaf Maple Removal



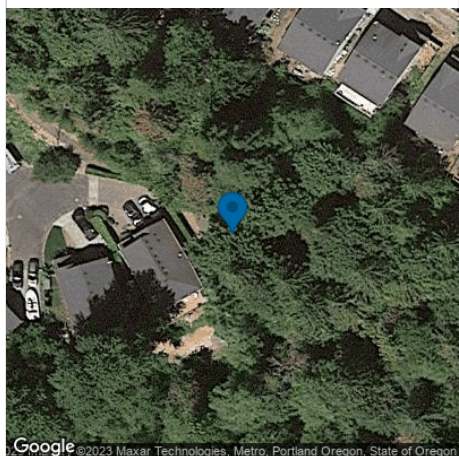
February 7, 2023

*Bigleaf Maple Removal* ID# 1  
Bigleaf Maple Removal



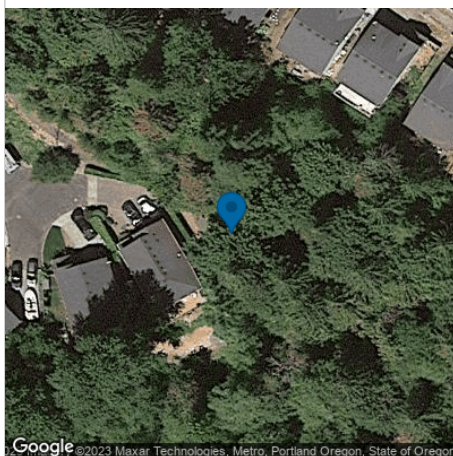
February 7, 2023

*Bigleaf Maple Removal* ID# 1  
Bigleaf Maple Removal



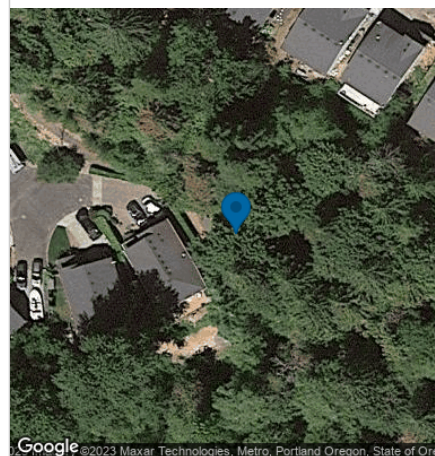
Leave a natural habitat spar pole below the target threshold. / Removal

Removal of this tree is highly recommended due to numerous issues going on with this tree, we have numerous areas of visual decay in 2 of the 3 stems, which that decay has set into all 3 stems of this tri-dom maple. We are seeing signs of



Leave a natural habitat spar pole below the target threshold. / Removal

Removal of this tree is highly recommended due to numerous issues going on with this tree, we have numerous areas of visual decay in 2 of the 3 stems, which that decay has set into all 3 stems of this tri-dom maple. We are seeing signs of



Leave a natural habitat spar pole below the target threshold. / Removal

Removal of this tree is highly recommended due to numerous issues going on with this tree, we have numerous areas of visual decay in 2 of the 3 stems, which that decay has set into all 3 stems of this tri-dom maple. We are seeing signs of

Fruiting bodies aka mushrooms along the trunks of these trees. The left leader is showing numerous areas of fruiting bodies under the lean of the tree, which is a sign we have trunk and or root rot visibly present in the tree.

Fruiting bodies aka mushrooms along the trunks of these trees. The left leader is showing numerous areas of fruiting bodies under the lean of the tree, which is a sign we have trunk and or root rot visibly present in the tree.

Fruiting bodies aka mushrooms along the trunks of these trees. The left leader is showing numerous areas of fruiting bodies under the lean of the tree, which is a sign we have trunk and or root rot visibly present in the tree.



Tiana - City of Sandy - Hamilton Ridge - Hazardous Maple Removal

Proposal #513364 02-09-2023



February 7, 2023

Bigleaf Maple Removal ID# 1  
Bigleaf Maple Removal



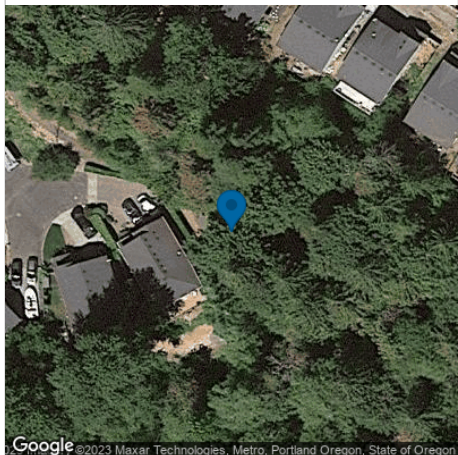
February 7, 2023

Bigleaf Maple Removal ID# 1  
Bigleaf Maple Removal

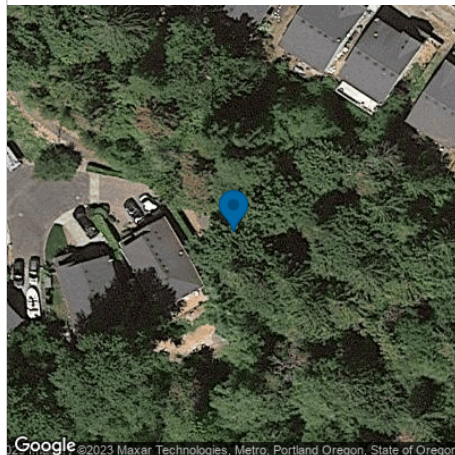


February 7, 2023

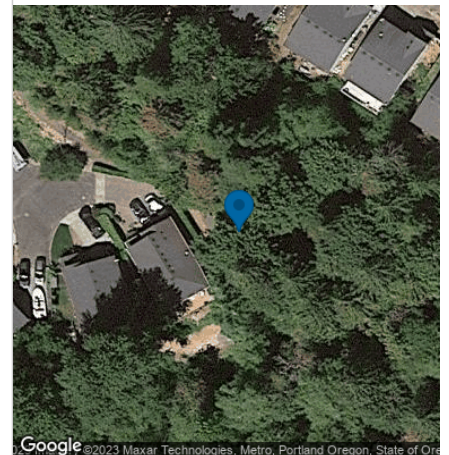
Bigleaf Maple Removal ID# 1  
Bigleaf Maple Removal



Leave a natural habitat spar pole below the target threshold. / Removal



Leave a natural habitat spar pole below the target threshold. / Removal



Leave a natural habitat spar pole below the target threshold. / Removal

Removal of this tree is highly recommended due to numerous issues going on with this tree, we have numerous areas of visual decay in 2 of the 3 stems, which that decay has set into all 3 stems of this tri-dom maple. We are seeing signs of Fruiting bodies aka mushrooms along the trunks of these trees. The left leader is showing numerous areas of fruiting bodies under the lean of the tree, which is a sign we have trunk and or root rot visibly present in the tree.

Removal of this tree is highly recommended due to numerous issues going on with this tree, we have numerous areas of visual decay in 2 of the 3 stems, which that decay has set into all 3 stems of this tri-dom maple. We are seeing signs of Fruiting bodies aka mushrooms along the trunks of these trees. The left leader is showing numerous areas of fruiting bodies under the lean of the tree, which is a sign we have trunk and or root rot visibly present in the tree.

Removal of this tree is highly recommended due to numerous issues going on with this tree, we have numerous areas of visual decay in 2 of the 3 stems, which that decay has set into all 3 stems of this tri-dom maple. We are seeing signs of Fruiting bodies aka mushrooms along the trunks of these trees. The left leader is showing numerous areas of fruiting bodies under the lean of the tree, which is a sign we have trunk and or root rot visibly present in the tree.



Tiana - City of Sandy - Hamilton Ridge - Hazardous Maple Removal

Proposal #513364 02-09-2023



February 7, 2023

*Bigleaf Maple Removal* ID# 1  
Bigleaf Maple Removal



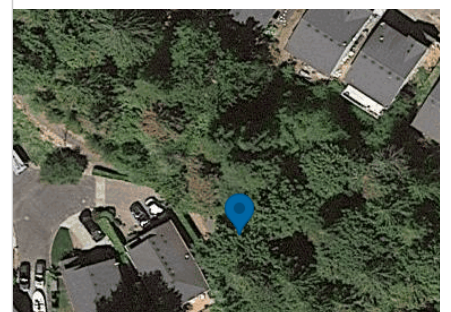
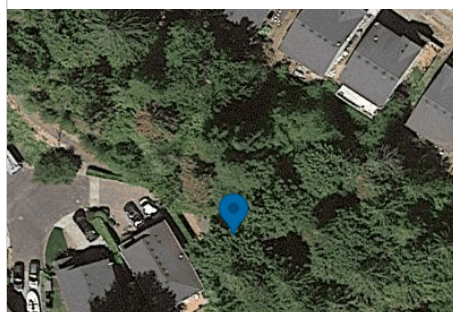
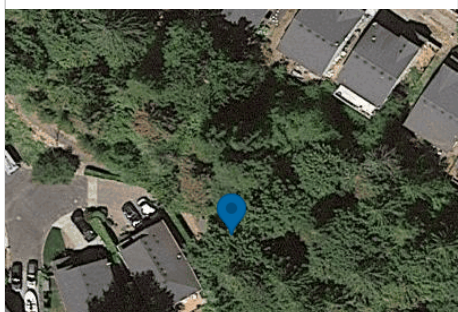
February 7, 2023

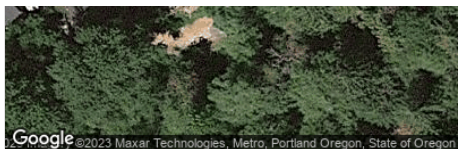
*Bigleaf Maple Removal* ID# 1  
Bigleaf Maple Removal



February 7, 2023

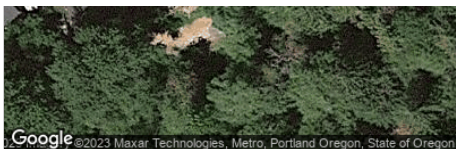
*Bigleaf Maple Removal* ID# 1  
Bigleaf Maple Removal





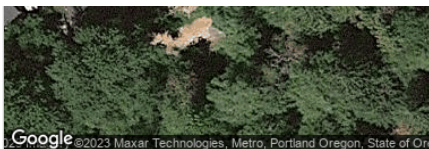
Leave a natural habitat spar pole below the target threshold. / Removal

Removal of this tree is highly recommended due to numerous issues going on with this tree, we have numerous areas of visual decay in 2 of the 3 stems, which that decay has set into all 3 stems of this tri-dom maple. We are seeing signs of Fruiting bodies aka mushrooms along the trunks of these trees. The left leader is showing numerous areas of fruiting bodies under the lean of the tree, which is a sign we have trunk and or root rot visibly present in the tree.



Leave a natural habitat spar pole below the target threshold. / Removal

Removal of this tree is highly recommended due to numerous issues going on with this tree, we have numerous areas of visual decay in 2 of the 3 stems, which that decay has set into all 3 stems of this tri-dom maple. We are seeing signs of Fruiting bodies aka mushrooms along the trunks of these trees. The left leader is showing numerous areas of fruiting bodies under the lean of the tree, which is a sign we have trunk and or root rot visibly present in the tree.



Leave a natural habitat spar pole below the target threshold. / Removal

Removal of this tree is highly recommended due to numerous issues going on with this tree, we have numerous areas of visual decay in 2 of the 3 stems, which that decay has set into all 3 stems of this tri-dom maple. We are seeing signs of Fruiting bodies aka mushrooms along the trunks of these trees. The left leader is showing numerous areas of fruiting bodies under the lean of the tree, which is a sign we have trunk and or root rot visibly present in the tree.



Tiana - City of Sandy - Hamilton Ridge - Hazardous Maple Removal

Proposal #513364 02-09-2023



February 7, 2023

*Bigleaf Maple Removal* ID# 1  
Bigleaf Maple Removal



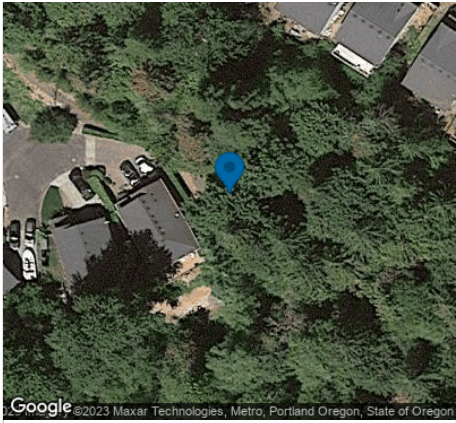
February 7, 2023

*Bigleaf Maple Removal* ID# 1  
Bigleaf Maple Removal



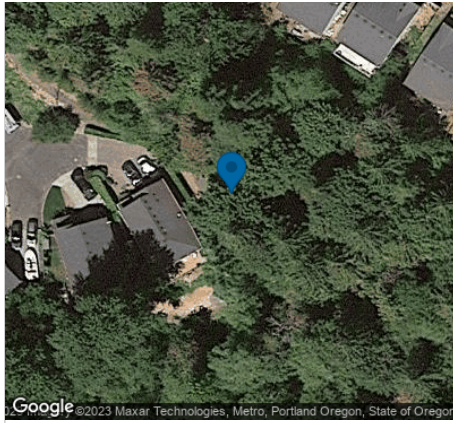
February 7, 2023

*Bigleaf Maple Removal* ID# 1  
Bigleaf Maple Removal



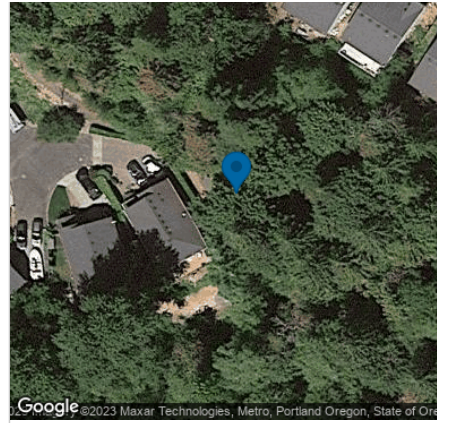
Leave a natural habitat spar pole below the target threshold. / Removal

Removal of this tree is highly recommended due to numerous issues going on with this tree, we have numerous areas of visual decay in 2 of the 3 stems, which that decay has set into all 3 stems of this tri-dom maple. We are seeing signs of Fruiting bodies aka mushrooms along the trunks of these trees. The left leader is showing numerous areas of fruiting bodies under the lean of the tree, which is a sign we have trunk and or root rot visibly present in the tree.



Leave a natural habitat spar pole below the target threshold. / Removal

Removal of this tree is highly recommended due to numerous issues going on with this tree, we have numerous areas of visual decay in 2 of the 3 stems, which that decay has set into all 3 stems of this tri-dom maple. We are seeing signs of Fruiting bodies aka mushrooms along the trunks of these trees. The left leader is showing numerous areas of fruiting bodies under the lean of the tree, which is a sign we have trunk and or root rot visibly present in the tree.



Leave a natural habitat spar pole below the target threshold. / Removal

Removal of this tree is highly recommended due to numerous issues going on with this tree, we have numerous areas of visual decay in 2 of the 3 stems, which that decay has set into all 3 stems of this tri-dom maple. We are seeing signs of Fruiting bodies aka mushrooms along the trunks of these trees. The left leader is showing numerous areas of fruiting bodies under the lean of the tree, which is a sign we have trunk and or root rot visibly present in the tree.



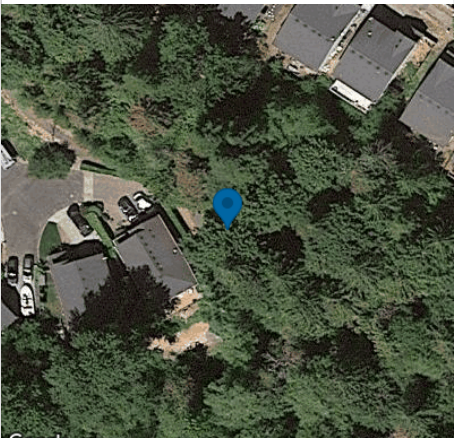
Tiana - City of Sandy - Hamilton Ridge - Hazardous Maple Removal

Proposal #513364 02-09-2023



February 7, 2023

*Bigleaf Maple Removal* ID# 1  
Bigleaf Maple Removal



Google ©2023 Maxar Technologies, Metro, Portland Oregon, State of Oregon

Leave a natural habitat spar pole  
below the target threshold / Removal