



Name of Project:	Junker Property
Location or Address:	38920 SE Junker Sandy OR 97055

Map & Tax Lot #	T:	R:	Section:	Tax Lot (s):
-----------------	----	----	----------	--------------

Request:	Remove trees

I am the (check one)  owner  lessee of the property listed above, and the statements and information contained herein are in all respects true, complete and correct to the best of my knowledge and belief.

Applicant (if different than owner)	Owner
Address	Address
City/State/Zip	City/State/Zip
Email	Email
Phone	Phone
Signature	Signature

Staff Use Only

File #:	Date: 1/23/23	Fee\$: 220	Planner:
Type of review:	Type I <input type="checkbox"/>	Type II <input checked="" type="checkbox"/>	Type III <input type="checkbox"/> Type IV <input type="checkbox"/>
Has applicant attended a pre-app?	Yes <input type="checkbox"/>	No <input checked="" type="checkbox"/>	If yes, date of pre-app meeting:



Todd Prager & Associates  
LLC

Tree No.	Common Name	Scientific Name	DBH <sup>1</sup>	C-Rad <sup>2</sup>	Condition <sup>3</sup>	Structure	Comments	Treatment Recommendation
1	bigleaf maple	<i>Acer macrophyllum</i>	27	15	fair	fair	extensive ivy	tbd
2	bigleaf maple	<i>Acer macrophyllum</i>	30	18	fair	fair	extensive ivy	tbd
3	sweet cherry	<i>Prunus avium</i>	15	12	fair	fair	extensive ivy	tbd
4	sweet cherry	<i>Prunus avium</i>	8	7	fair	fair	extensive ivy	tbd
5	sweet cherry	<i>Prunus avium</i>	12	10	fair	fair	extensive ivy, codominant at 6' with included bark	tbd
6	sweet cherry	<i>Prunus avium</i>	9	5	fair	fair	extensive ivy	tbd
7	sweet cherry	<i>Prunus avium</i>	9	3	poor	poor	smothered by ivy, top failed	tbd
8	bigleaf maple	<i>Acer macrophyllum</i>	31,28	13	fair	fair	extensive ivy, codominant at ground level with included bark, top dieback	tbd
9	bigleaf maple	<i>Acer macrophyllum</i>	36,34, 14,12	20	fair	fair	extensive ivy, one sided, multiple leaders at ground level with included bark	tbd
10	sweet cherry	<i>Prunus avium</i>	6	6	good	fair	one sided	tbd
11	sweet cherry	<i>Prunus avium</i>	7	5	fair	fair	extensive ivy	tbd
12	sweet cherry	<i>Prunus avium</i>	10	5	fair	fair	extensive ivy	tbd
13	bigleaf maple	<i>Acer macrophyllum</i>	41,30, 22	25	poor	poor	multiple leaders at ground level, extensive ivy, extensive heartrot in stems, branch failures	tbd
14	bigleaf maple	<i>Acer macrophyllum</i>	24,13, 9	16	poor	poor	multiple leaders at ground level, extensive ivy, 13" leader failure	tbd
15	sweet cherry	<i>Prunus avium</i>	8	5	fair	fair	extensive ivy	tbd
16	bigleaf maple	<i>Acer macrophyllum</i>	22,12	15	fair	poor	12" stem failed, extensive ivy	tbd
17	bigleaf maple	<i>Acer macrophyllum</i>	31	10	fair	fair	extensive ivy	tbd
18	bigleaf maple	<i>Acer macrophyllum</i>	9	5	poor	poor	smothered by ivy	tbd
19	bigleaf maple	<i>Acer macrophyllum</i>	10	5	poor	poor	smothered by ivy	tbd
20	bigleaf maple	<i>Acer macrophyllum</i>	8	5	poor	poor	smothered by ivy	tbd
21	bigleaf maple	<i>Acer macrophyllum</i>	7	3	poor	poor	smothered by ivy, suppressed, heartrot	tbd
22	bigleaf maple	<i>Acer macrophyllum</i>	8	8	poor	poor	smothered by ivy, suppressed	tbd
23	bigleaf maple	<i>Acer macrophyllum</i>	8	3	poor	poor	smothered by ivy	tbd
24	bigleaf maple	<i>Acer macrophyllum</i>	15	5	poor	poor	smothered by ivy	tbd
25	bigleaf maple	<i>Acer macrophyllum</i>	9,5	8	poor	poor	smothered by ivy, 5" stem failure	tbd
26	sweet cherry	<i>Prunus avium</i>	6	3	poor	poor	smothered by ivy	tbd
27	bigleaf maple	<i>Acer macrophyllum</i>	11	5	poor	poor	smothered by ivy, connected to large decayed stump	tbd
28	sweet cherry	<i>Prunus avium</i>	11	5	poor	poor	smothered by ivy	tbd



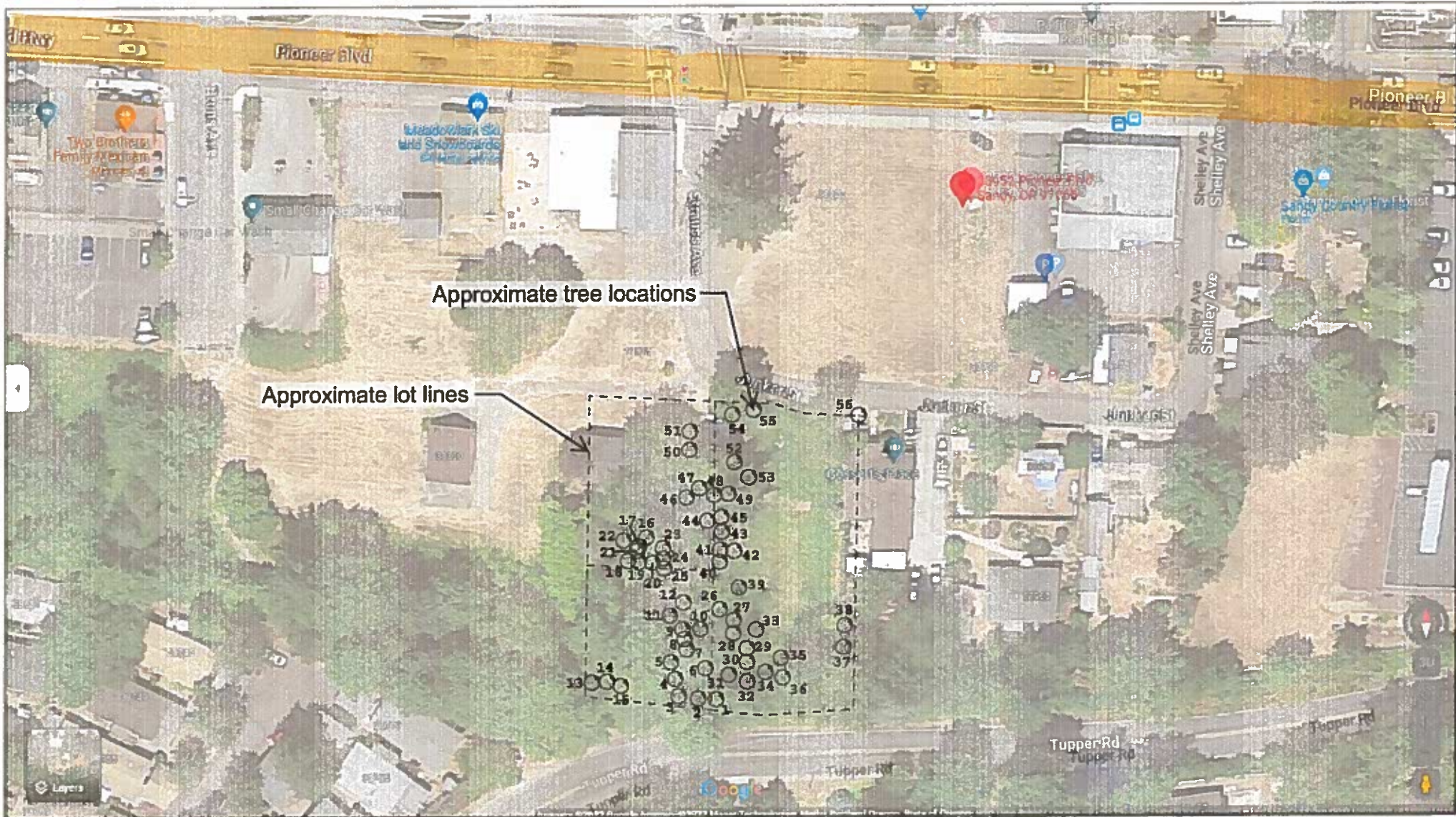
Todd Prager & Associates  
LLC

Tree No.	Common Name	Scientific Name	DBH <sup>1</sup>	C-Rad <sup>2</sup>	Condition <sup>3</sup>	Structure	Comments	Treatment Recommendation
29	bigleaf maple	<i>Acer macrophyllum</i>	11	8	fair	fair	extensive ivy	tbd
30	bigleaf maple	<i>Acer macrophyllum</i>	36	20	fair	poor	extensive ivy, one sided, previous top failure	tbd
31	bigleaf maple	<i>Acer macrophyllum</i>	26	10	poor	poor	smothered by ivy, two previous stem failures at lower trunk	tbd
32	sweet cherry	<i>Prunus avium</i>	11	7	poor	poor	smothered by ivy, leans downhill	tbd
33	sweet cherry	<i>Prunus avium</i>	22	12	fair	fair	extensive ivy	tbd
34	sweet cherry	<i>Prunus avium</i>	7	3	poor	poor	smothered by ivy	tbd
35	bigleaf maple	<i>Acer macrophyllum</i>	8,7,6	8	poor	poor	smothered by ivy, stump sprout	tbd
36	sweet cherry	<i>Prunus avium</i>	13	10	poor	poor	smothered by ivy	tbd
37	Norway maple	<i>Acer platanoides</i>	25	20	good	fair	extensive ivy, one sided, codominant at 7'	tbd
38	Norway maple	<i>Acer platanoides</i>	14	7	poor	poor	smothered by ivy, heartrot	tbd
39	southern magnolia	<i>Magnolia grandiflora</i>	7	7	good	fair	large pruning cuts at lower trunk	tbd
40	sweet cherry	<i>Prunus avium</i>	6,5	5	poor	poor	smothered by ivy	tbd
41	sweet cherry	<i>Prunus avium</i>	18	8	poor	poor	smothered by ivy	tbd
42	sweet cherry	<i>Prunus avium</i>	6	4	poor	poor	smothered by ivy	tbd
43	sweet cherry	<i>Prunus avium</i>	16	7	poor	poor	smothered by ivy, codominant at 7' with included bark	tbd
44	sweet cherry	<i>Prunus avium</i>	9	3	poor	poor	smothered by ivy	tbd
45	sweet cherry	<i>Prunus avium</i>	7	5	poor	poor	smothered by ivy	tbd
46	sweet cherry	<i>Prunus avium</i>	10,8	11	fair	fair	one sided, codominant at ground level	tbd
47	sweet cherry	<i>Prunus avium</i>	9	0	very poor	very poor	dead 15' snag	tbd
48	grand fir	<i>Abies grandis</i>	11	9	good	good		tbd
49	sweet cherry	<i>Prunus avium</i>	12	0	very poor	very poor	dead 40' snag	tbd
50	sweet cherry	<i>Prunus avium</i>	23	15	fair	fair	side pruned for overhead power, codominant at 3' with included bark	tbd
51	bigleaf maple	<i>Acer macrophyllum</i>	12,10	15	very poor	very poor	50% dead with extensive decay, lean over garage	tbd
52	Chinese chestnut	<i>Castanea mollissima</i>	18	18	good	good		tbd
53	spruce	<i>Picea sp.</i>	30	29	fair	fair	scattered branch dieback, overextended branches	tbd
54	black walnut	<i>Juglans nigra</i>	14,9,9, 5,4	10	good	fair	multiple leaders at lower trunk, side pruned for overhead power	tbd
55	Scots pine	<i>Pinus sylvestris</i>	9	6	good	fair	kinked lower trunk, previously topped for overhead power	tbd



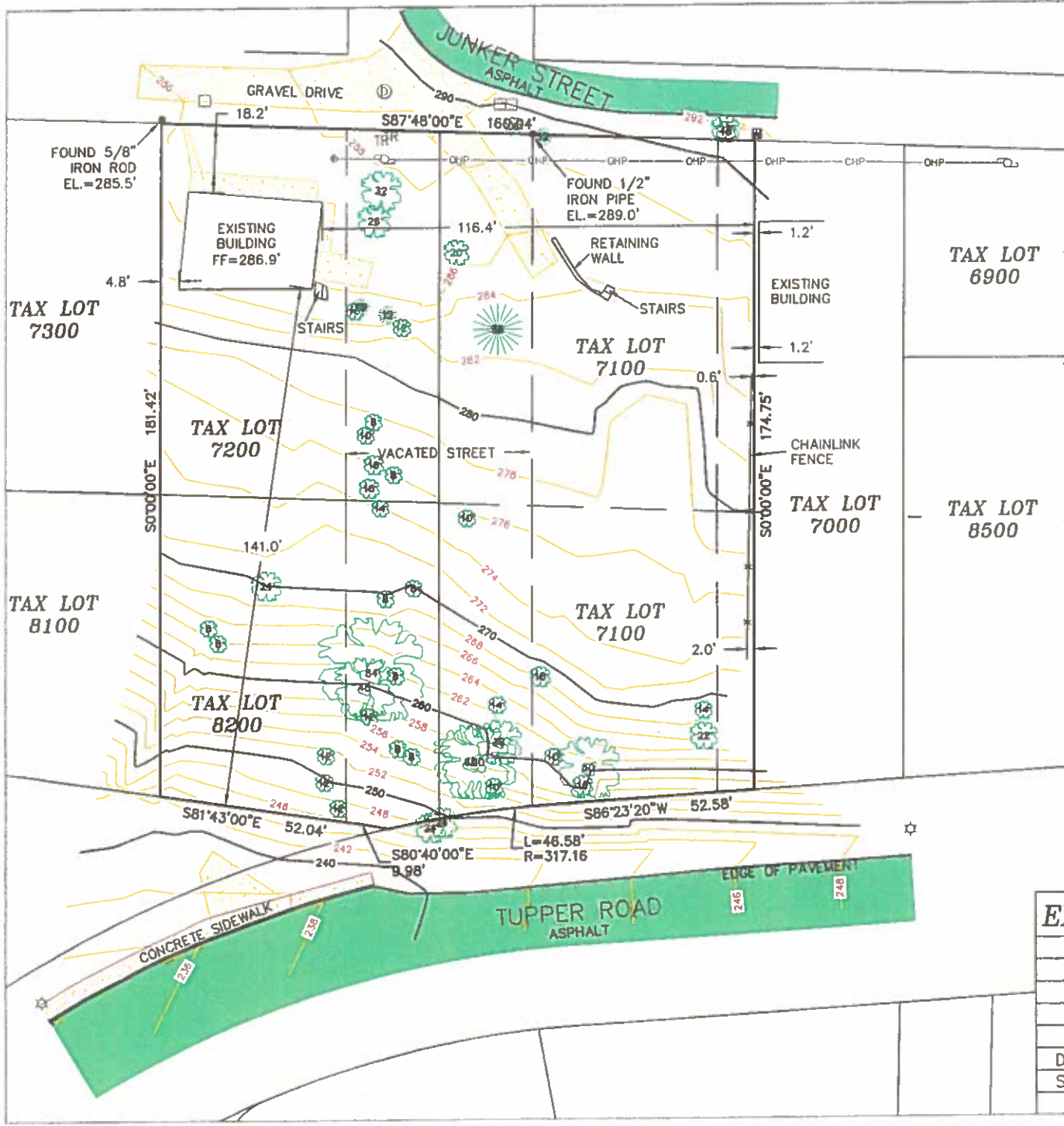
Todd Prager & Associates  
LLC

Tree No.	Common Name	Scientific Name	DBH <sup>1</sup>	C-Rad <sup>2</sup>	Condition <sup>3</sup>	Structure	Comments	Treatment Recommendation
56	sweet cherry	<i>Prunus avium</i>	20	22	fair	fair	side pruned for overhead power, upright leaders with included bark	tbd
<sup>1</sup> DBH is the trunk diameter in inches measured per International Society of Arboriculture standards.								
<sup>2</sup> C-Rad is the approximate crown radius in feet.								
<sup>3</sup> Condition and Structure ratings range from very poor, poor, fair, to good.								



Approximate tree locations

Approximate lot lines



**LEGEND**

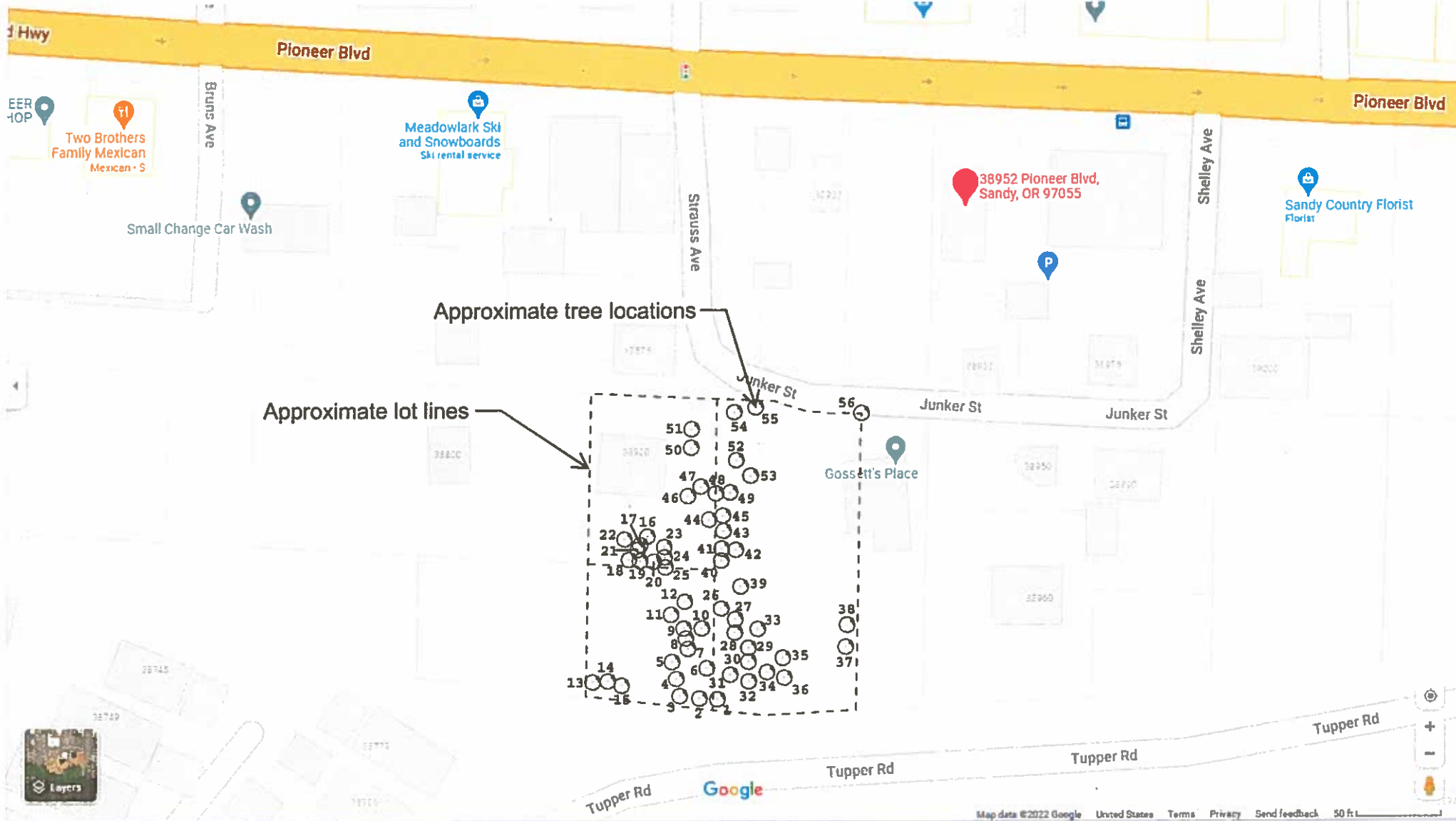
- EXISTING DECIDUOUS TREE W/ TRUNK DIAMETER (INCHES)(CL=CLUSTER)
- EXISTING CONIFEROUS TREE W/ TRUNK DIAMETER (INCHES)(CL=CLUSTER)
- EXISTING TELEPHONE RISER
- EXISTING POWER POLE
- EXISTING GUY ANCHOR
- EXISTING LIGHT POLE
- EXISTING OVERHEAD POWER LINES
- EXISTING WATER METER
- EXISTING CATCH BASIN
- EXISTING STORM MANHOLE
- EXISTING FENCE
- FOUND MONUMENTS
- EXISTING GRAVEL
- EXISTING CONCRETE
- EXISTING ASPHALT

**NOTES**

1. THE PURPOSE OF THIS MAP WAS TO SHOW THE EXISTI
2. THE BASIS OF BEARINGS WAS PER THE PLAT OF "JUN RECORDS.
3. LOCAL DATUM WAS ESTABLISHED BY ASSUMING AN EL
4. THIS MAP WAS PREPARED FOR THE EXCLUSIVE USE OF
5. THIS MAP WAS PREPARED BY PLAT RECORDS, CALCULATED BOUNDARY SURVEY WILL NOT BE FILED.
6. ALL UTILITY LOCATIONS ARE SHOWN BY ABOVE GROUND MARKS SUPPLIED BY THE LOCAL UTILITY COMPANIES. CM' UNDERGROUND LOCATION. PLEASE NOTIFY THE UTILITY NC 1-800-332-2344.

<b>EXISTING CONDITIONS</b>	
SW 1/4 SEC 13, T2S, R4E, W.M.	
CITY OF SANDY	
CLACKAMAS COUNTY, OREGON	
DECEMBER 7, 2022	
DRAWN: DMR	CHECKED: SPF
SCALE 1"=100' ACCOUNT #500-1323	
Y:\500-1323\DWG\5001323BASE	

CMT S  
PHONE



Approximate tree locations

Approximate lot lines

38952 Pioneer Blvd,  
Sandy, OR 97055

Gossitt's Place