



City of Sandy

Agenda

SandyNet Advisory Board Meeting

Meeting Location: 17175 Meinig Ave, Sandy OR
97055

Meeting Date: Thursday, August 18, 2022

Meeting Time: 7:00 PM

<https://us02web.zoom.us/j/81647824881>

Page

1. ROLL CALL

2. CHANGES TO THE AGENDA

3. APPROVAL OF MINUTES

3.1. [SandyNet Advisory Board - 16 Jun 2022 - Minutes - Pdf](#)

3 - 4

3.2. [SandyNet Advisory Board - 19 May 2022 - Minutes - Pdf](#)

5 - 6

4. OLD BUSINESS

4.1. DirecTV Partnership Discussion

7

[Agenda Keypoints](#)

4.2. Wastewater Treatment Plan Update

4.3. ARPA Update

8 - 11

[InvisiLight-Facade-Solution-Brochure-web](#)

5. NEW BUSINESS

5.1. ACP Update and Discussion

12

[ACP Update](#)

5.2. Emergency Operations and Planning for Continuity

13

[Emergency Operations and Planning](#)

6. STAFF UPDATES

7. ADJOURN



MINUTES
SandyNet Advisory Board Meeting
Thursday, June 16, 2022 17175 Meinig Ave,
Sandy OR 97055 7:00 PM

BOARD MEMBERS PRESENT: Gregory Freetage, Board Member and Joe Smith, Board Member

BOARD MEMBERS ABSENT: Don Williams, Board Member and Joel Brache, Board Member

STAFF PRESENT:

MEDIA PRESENT:

1. Roll Call

1.1.

Meeting started at 7:06 PM. Jeremy Pietzold, Council Liaison; Staff in attendance: Gregory Brewster, IT Director

2. Changes to the Agenda

3. APPROVAL OF MINUTES

3.1. May 19th, 2022 Minutes

Quorum not met.

4. Old Business

5. New Business

5.1. DirecTV Partnership Discussion and Staff Presentation

DirecTV provided slides are Privileged and Confidential. Staff will provide supplemental information.

Staff mentioned that DirecTV lacks Pac 12 network. Council Liaison Pietzold asked staff to research which major television providers offer the Pac 12 network and compare to proposed line up.

Board member Smith asked about tracking number of referrals via portal report. Board member Freetage discussed potential downsides to larger provider partnership. Seeking clear responsibilities and risk and privacy.

5.2. Rate Assistance Discussion

Notes and rate models provided before and during meeting.

Staff discussed the rate model issues with providing in-house assistance program. Board in agreement that staff should continue to pursue the FCC's Affordable Connection Program. Staff instructed to look into install fee and consider futureproofing network during construction of apartments.

6. STAFF UPDATES

7. Adjourn

Adjourned at 8:45 PM.



MINUTES
SandyNet Advisory Board Meeting
Thursday, May 19, 2022 17175 Meinig Ave, Sandy OR 97055 7:00 PM

BOARD MEMBERS PRESENT: Don Williams, Board Member, Gregory Freetage, Board Member, Joe Smith, Board Member, and Joel Brache, Board Member

BOARD MEMBERS ABSENT:

STAFF PRESENT:

MEDIA PRESENT:

1. Roll Call

- 1.1. Staff Present: Shelley Denison, Associate Planner; Jeremy Pietzold, Council Liaison; Gregory Brewster, IT Director.

2. Changes to the Agenda

3. APPROVAL OF MINUTES

- 3.1. Minutes approved for March 17th, had quorum. Motion by Board Member Smith and seconded by Chair Joel. Passed Unanimously.

4. Old Business

- 4.1. Wastewater Treatment Plan Update - General Contract
Council Liaison Pietzold asked about the project timeline and design. Staff provided up date on contract and communication status with contractor.

4.2. ARPA Contract Update

4.3.

5. New Business

- 5.1. City Comprehensive Plan Community Engagement

Shelley engaged board on input and discussed topics relevant to the Sandy Comprehensive Plan.

6. STAFF UPDATES

6.1.

Staff provided an update on current staffing levels and discussed the next steps of the rate increase.

7. Adjourn

7.1.

Adjourned at 8:50 pm.

DirectTV Partnership Discussion

Revisit concerns and discuss pricing. NDA was signed for pricing, so it is omitted from the packet.

Wastewater Treatment Plan Update

Engineered design is on the table for reference. All permits were signed as of 8/17/2022. Timeline for construction is dependent on materials, and we have worked with Henkels and McCoy to adjust our plans to utilized materials that are readily available. We have not had to alter our goals or requirements. Once the hardware has been identified, we will just need to verify the new costs, to ensure they do not modify our not to exceed amount, and we will have it scheduled.

ARPA Update

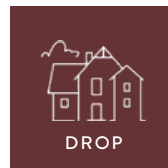
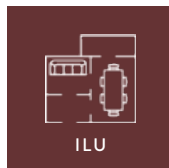
This month, I received preliminary approval from all apartment complexes, and have been finalizing our contract with Henkels and McCoy. This project got delayed as we identified a solution for rate assistance and struggled to hear back from apartment property management companies. The current list of prerequisites before turning up service are:

1. Finish contract with Henkels and McCoy
2. Begin engineering and design
 - a. Identifying splice locations and existing facilities
3. Review and modify design
 - a. Seek approval of construction for each apartment complex
4. Order materials
5. Begin construction
6. SandyNet to design MDU deployment method
 - a. OFS Invisilight and EZ bend
7. Splice and light up fiber to buildings
8. Deploy fiber past each unit
9. Hook up customers that have pre-ordered



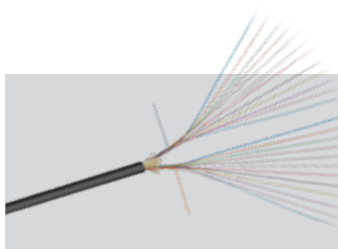
AN OFS FTTx SOLUTION

Applying our Award-Winning Optical Fiber to the Exterior of Your Building



Solving an old pain point of visible exterior cabling or raceways, with a new, virtually invisible approach to placing fiber on and into buildings

SIMPLIFY YOUR FIBER DEPLOYMENT PRODUCTS USED



InvisiLight Facade Cord
M-Pack® Indoor/Outdoor Cord



SlimBox® 2- or 4-Fiber
Indoor/Outdoor Enclosure
Outside to the Living Unit



Outdoor Compact POE Module
UV Rated for
Breezeway Applications

WWW.OFSOPTICS.COM



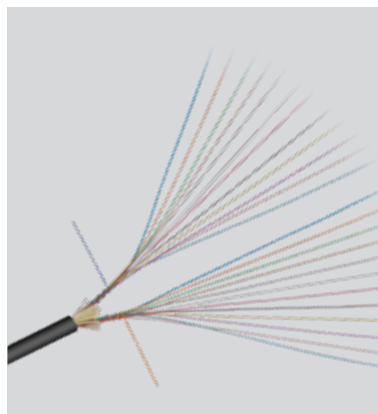
INVISILIGHT® FACADE SOLUTION

Vertical and Horizontal Applications

INVISILIGHT® FACADE CORD M-Pack® Indoor/Outdoor Cord



24 FIBERS
24 LIVING
UNITS
100X FASTER
INTERNET



FEATURES AND BENEFITS

- Allows direct routing from building exteriors into living areas
- Compact and lightweight Multiple Dwelling Unit (MDU) Drop Cable
- Features OFS award-winning EZ Bend® Optical Fiber, better than ITU G.657B3, 2.5 mm bend radius
- White or black outer jacket to blend into building's existing exterior
- 3.0 - 3.8 mm cable
- Easily secured with Sharktooth Anchors
- May be stapled or bent around sharp corners
- Available pre-connectorized on the network facing end with SC, LC, or MTP connectors

M-Pack Indoor/Outdoor Cord Ordering Information

Part Number	Product Code	Description
PR1-001-575-0273	MO30-012B-DPW-4-12-250-RIB-2000FT	EZ-Bend Indoor/Outdoor Plenum 3.0mm 12-Fiber Cord White - RIB - 2000FT
PR1-001-582-0273	MO30-012B-DPK-4-12-250-RIB-2000FT	EZ-Bend Indoor/Outdoor Plenum 3.0mm 12-Fiber Cord Black - RIB - 2000FT
PR1-001-576-0273	MO38-024B-DPW-4-12-250-RIB-2000FT	EZ-Bend Indoor/Outdoor Plenum 3.8mm 24-Fiber Cord White - RIB - 2000FT
PR1-001-583-0273	MO38-024B-DPK-4-12-250-RIB-2000FT	EZ-Bend Indoor/Outdoor Plenum 3.8mm 24-Fiber Cord Black - RIB - 2000FT

actual size shown

12-Fiber InvisiLight® Facade Cord (3.0 mm)

24-Fiber InvisiLight® Facade Cord (3.8 mm)

EZ-BEND® 3.0 MM CORD

Occasionally Used to Distribute from the SlimBox to 4 Living Units

WWW.OFSOPTICS.COM

INVISILIGHT® FACADE SOLUTION

Vertical Applications

1 LIVING UNIT
PER FLOOR
(Townhouses,
Condominiums)

SLIMBOX® 2- OR 4-FIBER INDOOR/OUTDOOR ENCLOSURE

Installed Outside of Living Unit or On Each Floor (for Multiple Units per Floor)



FEATURES AND BENEFITS

- Protection level up to IP65
- Splicing and adapter connections inside the module
- Can be wall mounted or pole mounted
- Available as a pre-terminated product with the InvisiLight® Facade Cords

PRODUCT DESCRIPTION

The SlimBox 2- and 4-Fiber Indoor/Outdoor Enclosures are an excellent choice as an external demarcation closure, featuring dual functionality as either a splice or connector housing.

It is compact and inconspicuous enough to satisfy property owners, while protecting the valuable fusion splices and/or connectors inside.

Ordering Information for SlimBox 2-Fiber Indoor/Outdoor Enclosure

Part Number	Product Code	Material Description
301139630 (no adapters)	SLIMBOX-H,OUTDOORSVI-02FIBER-INSIDEADP	SlimBox Indoor/Outdoor Wall Mount Unit for 2 Internal SC Adapters
301139648	WSE1S-002-SS21-GRY-SCAUNC-F	SlimBox Indoor/Outdoor Wall Mount Unit with 2 Internal SCA Adapters
301139655	WSE1W-002-SS21-GRY-SCAUNC-F-PT	SlimBox Indoor/Outdoor Wall Mount Unit with 2 Internal SCA Adapters and 2 SM Pigtails
301139663	WSE1S-002-SS21-GRY-SCUUNC-F	SlimBox Indoor/Outdoor Wall Mount Unit with 2 Internal SCU Adapters
301139671	WSE1W-002-SS21-GRY-SCUUNC-F-PT	SlimBox Indoor/Outdoor Wall Mount Unit with 2 Internal SCU Adapters and 2 SM Pigtails

Ordering Information for SlimBox 4-Fiber Indoor/Outdoor Enclosure

301139689 (no adapters)	SLIMBOX-H,OUTDOORSVI-04FIBER-INSIDEADP	SlimBox Indoor/Outdoor Wall Mount Unit for 4 Internal SCA Adapters
301139697	WSE1S-004-SS41-GRY-SCAUNC-F	SlimBox Indoor/Outdoor Wall Mount Unit with 4 Internal SCA Adapters
301139705	WSE1W-004-SS41-GRY-SCAUNC-F-PT	SlimBox Indoor/Outdoor Wall Mount Unit with 4 Internal SCA Adapters and 4 SM Pigtails
301139713	WSE1S-004-SS41-GRY-SCUUNC-F	SlimBox Indoor/Outdoor Wall Mount Unit with 4 Internal SCU Adapters
301139721	WSE1W-004-SS41-GRY-SCUUNC-F-PT	SlimBox Indoor/Outdoor Wall Mount Unit with 4 Internal SCU Adapters and 4 SM Pigtails

WWW.OFSOPTICS.COM



OUTDOOR COMPACT POE MODULE



FEATURES AND BENEFITS

- Compact dimensions
- Discreet appearance
- UV-resistant material
- Easy to secure on the wall with two screws
- Internal fiber guides for easy installation
- Can be installed on any vertical plane surface
- Plastic body offers high mechanical resistance and an efficient design
- Accommodates splice protectors (40 mm)

Indoor/Outdoor Compact POE Module Ordering Information

Part Number	Comcode	Description
NVSLGHTHO-CMODULE-GRY-W/ SCA ADAPTER	301145751	Compact Point-of-Entry (POE) Module, Indoor/outdoor, gray, SCA
NVSLGHTHO-CMODULE-GRY-W/ LCA ADAPTER	301152880	Compact Point-of-Entry (POE) Module, Indoor/outdoor, gray, LCA



For additional information please contact your sales representative.

You can also visit our website at www.ofsoptics.com or call 1-888-FIBER-HELP (1-888-342-3743) from inside the USA or +1-770-798-5555 from outside the US. EMEA Specific: +49 (0) 228 7489 201

InvisiLight, EZ-Bend, and SlimBox are registered trademarks of OFS FITEL, LLC.

OFS reserves the right to make changes to the prices and product(s) described in this document at any time without notice.

This document is for informational purposes only and is not intended to modify or supplement any OFS warranties or specifications relating to any of its products or services.

Copyright © 2021 OFS FITEL, LLC
All rights reserved, printed in USA.

OFS Marketing Communications

Date: 07/21



ACP Update

Last month, SandyNet enrolled in the Affordability Connection Program, ACP. ACP was selected as the appropriate option to explore and implement a rate-assistance program for SandyNet, as it is a reimbursement program, rather than reducing price out of pocket. This would allow SandyNet to still generate its normal revenue with a reduction in price paid by the customer.

FCC Approved Application on July 15th, 2022.

USAC Approved Application on July 20th, 2022.

For next steps, I need to finalize the account setup, and specifications, and get enrolled into their online national lifeline verification system. Once that is completed, we will need to check off the rollout and requirements outline by the program. We'll have to advertise that we offer the program network wide and begin compiling relevant information regarding sign ups and reports. Training for employees will follow and then we will be able to go live.

It has been requested of me that I bring information and intent to offer ACP before Council. While we are approved, I will have to request approval to offer the program to residents. For your reference, below is a list of pros and cons regarding the program. Some cons may be mitigated with acceptable procedures.

Provides up to \$30 reimbursement to ISP	90 minimum shut off
Can be applied to any plan	City charter doesn't allow for cost recovery
FCC handles database for eligibility	Additional Admin overhead
FCC handles responsibility for eligibility	Funding through 2025*
	Reporting burden in addition to admin overhead

Emergency Operations and Planning

City staff has been reviewing and exploring operations and continuity within the city in the event of an emergency. The Police Department has been reviewing their Emergency Operation Plan, EOP and assigning departments and stakeholders to handle operations in the event of an emergency. SandyNet is grouped under IT in this document, as it mostly pertains to internal city systems and operations. Each department in Sandy is a customer of SandyNet, and SandyNet should plan for how it will operate in the event of a number of emergencies. This is a larger discussion than just one meeting, and our staff has already reviewed a handful of situations and risks that can impact service to city emergency operations and disrupted or degraded service in the event of an emergency. Current points to consider are:

- Enhance physical security of SandyNet sites and facilities
- Identify critical assets, such as facilities, equipment, fiber paths, service topologies/routes and ISP/contractual services that are at risk or have an increased risk of damage or repair time.
 - Reduce each deemed important asset's risk
- Identify and resolve environmental, health and safety risks for employees when operating in an emergency
- Develop a continuity plan and explore larger options for redundancy such as geographically diverse central offices and disaster recovery systems
- Identify and implement priority service classification for service. Implement a structure that gives priority for identified critical services and give priority to restoration or access if bandwidth throughput is degraded.
- Training

Two items that are currently in the works:

1. Moving critical communication services for all city departments to FirstNet. See FirstNet notes for specifics.
2. Implement a diverse route for internet access if Portland service is disrupted. Our team has been working with Clackamas County and Link Oregon to turn up a minimum of a 10G link to Denver for ISP transit. The City Manager's office agrees that access to a redundant connection is a priority and should be explored and implemented as soon as financially possible. Costs for Link Oregon to install equipment for us to ride across a Clackamas County connection over the cascades and into Denver run at about 30K for purchase and installation of hardware. Monthly rental of a 10G circuit is estimated at less than \$1400 a month and ISP transit is a minimum of \$800 a month. Other factors should be checked before moving forward with a full decision to execute a plan with CC and Link Oregon. Usage of link in normal operating situations should be possible. For example, low enough latency and routing usage of the link during normal operations. Additionally, savings could be found by dropping an existing 10G link from a provider that will be expiring within the next year.