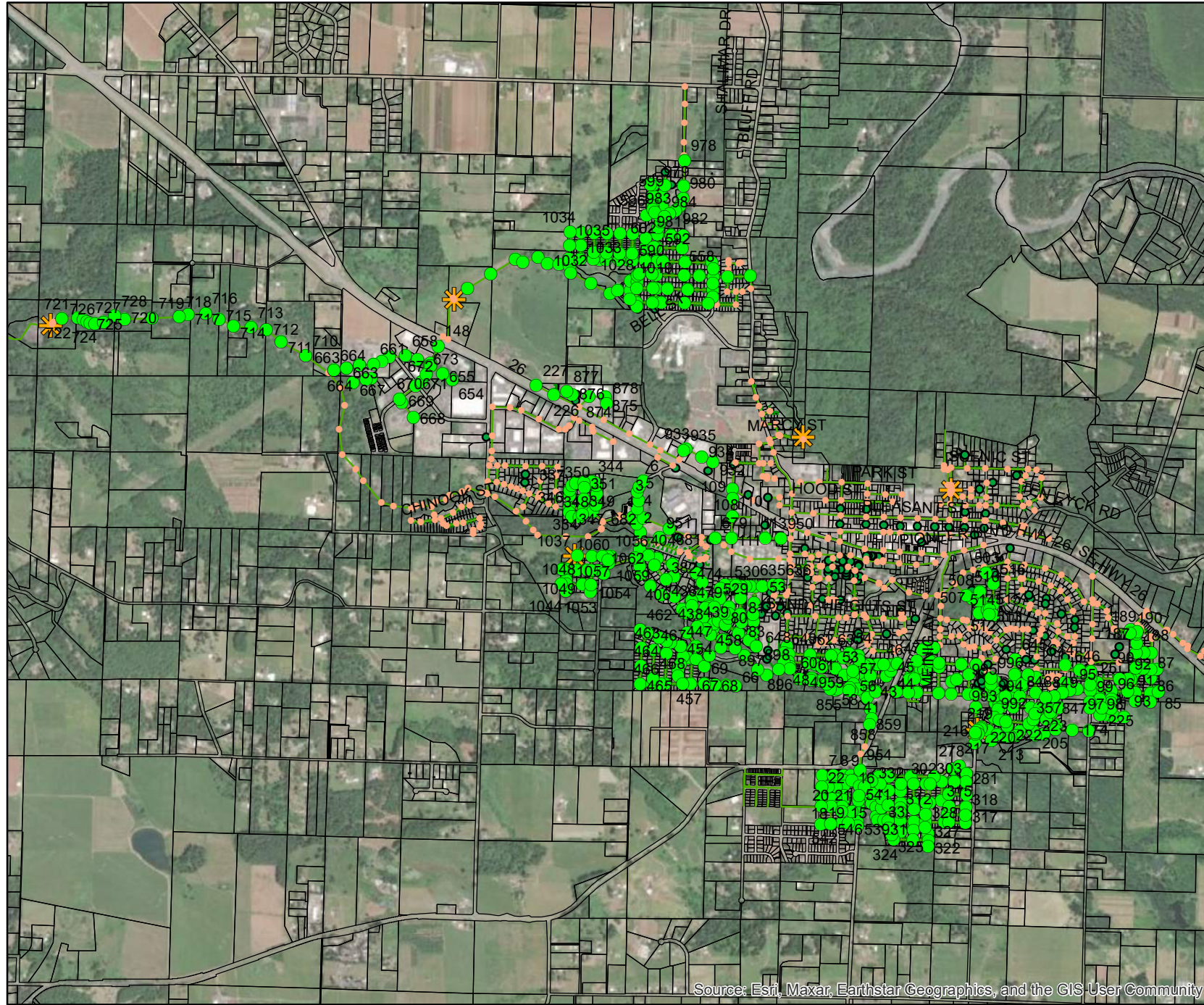


I & I Grouting Project Phase 1



Site Map

Sheet List

- 2 - Basin 5 Sheet 1
- 3 - Basin 5 Sheet 2
- 4 - Priority 1 Sheet 1
- 5 - Priority 1 Sheet 2
- 6 - Priority 2 Sheet 1
- 7 - Priority 2 Sheet 2
- 8 - Priority 2 Sheet 3
- 9 - Priority 2 Sheet 4
- 10 - Priority 2 Sheet 5
- 11 - Priority 2 Sheet 6
- 12 - Priority 3 Sheet 1
- 13 - Priority 3 Sheet 2
- 14 - Priority 3 Sheet 3
- 15 - Priority 3 Sheet 4
- 16 - Priority 3 Sheet 5

Contacts

AJ Thorne - Project manager - 503-489-2162
 Ryan Wood - Public Works Superintendent - 503-489-0928
 Robby Cox - ODOT Access Coordinator - 503-667-7441

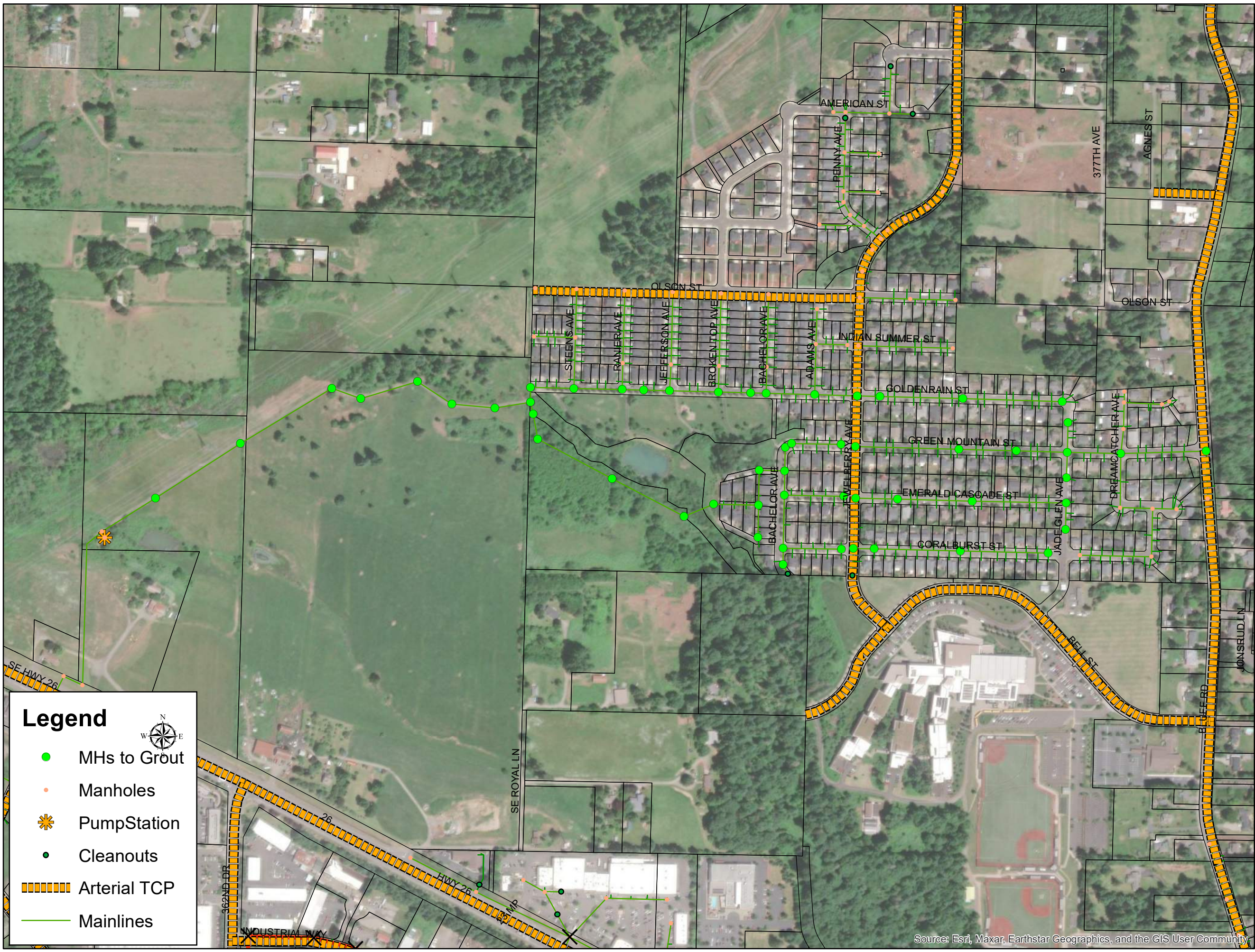


**Know what's below.
Call before you dig.**

DATE:	12/7/2022	SCALE:	NTS
PAGE:	1 OF 17		

The information shown was prepared for use by the City of Sandy and no other purpose. The City of Sandy will not be responsible for any errors and omissions if used by others. All information MUST BE FIELD VERIFIED to substantiate its validity.
PROJECT NAME: I&I Grouting Program Phase 1
SHEET NAME/ LOCATION: Cover Page

DEPARTMENT OF PUBLIC WORKS
 39250 PIONEER BLVD
 SANDY, OR 97055
 503-668-5533



Legend

- MHs to Grout
- Manholes
- ★ Pump Station
- Cleanouts
- Arterial TCP
- Mainlines



Source: Esri, Maxar, Earthstar Geographics, and the GIS User Community

DATE: 12/7/2022
 SCALE: NTS
 PAGE: 2 OF 17

The information shown was prepared for use by the City of Sandy and no other purpose. The City of Sandy will not be responsible for any errors and omissions if used by others. All information MUST BE FIELD VERIFIED to substantiate its validity

PROJECT NAME: I&I Grouting Program Phase 1
 SHEET NAME/ LOCATION: Basin 5 Sheet 1
 37531 Emerald Cascade St

DEPARTMENT OF PUBLIC WORKS
 39250 PIONEER BLVD
 SANDY, OR 97055
 503-668-5533



Legend

- MHS to Grout
- Manholes
- ⊗ PumpStation
- Cleanouts
- Arterial TCP
- Mainlines



Source: Esri, Maxar, Earthstar Geographics, and the GIS User Community

DATE: 12/7/2022
 SCALE: NTS
 PAGE: 3 OF 17

The information shown was prepared for use by the City of Sandy and no other purpose. The City of Sandy will not be responsible for any errors and omissions if used by others. All information MUST BE FIELD VERIFIED to substantiate its validity

PROJECT NAME: **I&I Grouting Program Phase 1**
 SHEET NAME/ LOCATION: **Basin 5 Sheet 2
 37029 Olson St.**

SANDY
 WHERE INNOVATION MEETS ELEVATION

DEPARTMENT OF PUBLIC WORKS
 39250 PIONEER BLVD
 SANDY, OR 97055
 503-668-5533



Legend

- MHs to Grout
- Manholes
- ★ PumpStation
- Cleanouts
- Arterial TCP
- Mainlines

DATE: 12/7/2022
 SCALE: NTS
 PAGE: 4 OF 17

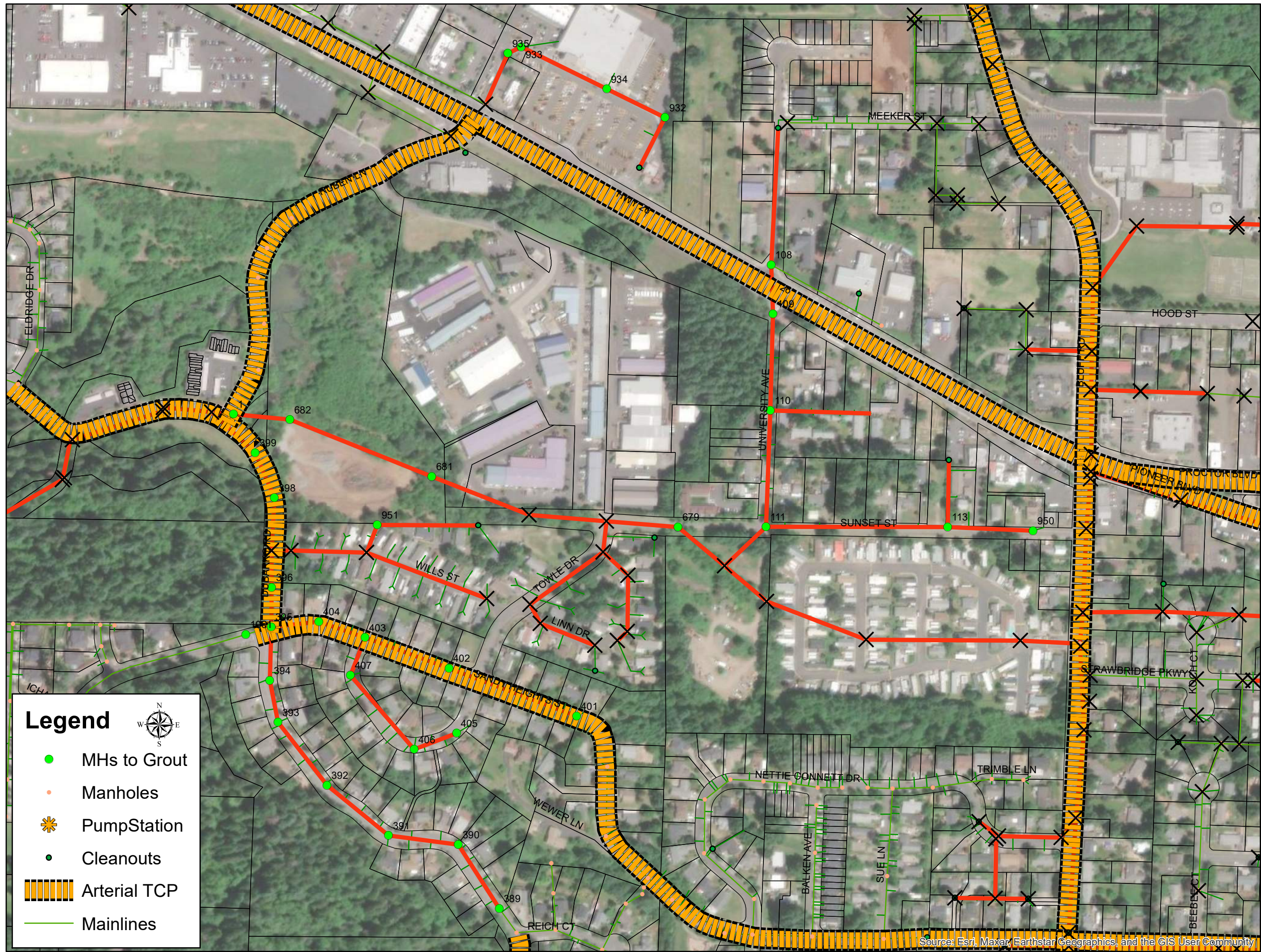
The information shown was prepared for use by the City of Sandy and no other purpose. The City of Sandy will not be responsible for any errors and omissions if used by others. All information MUST BE FIELD VERIFIED to substantiate its validity

PROJECT NAME: I&I Grouting Program Phase 1

SHEET NAME/ LOCATION: Priority 1 Sheet 1
 18450 Meinig Ave

DEPARTMENT OF PUBLIC WORKS
 39250 PIONEER BLVD
 SANDY, OR 97055
 503-668-5533

Source: Esri, Maxar, Earthstar Geographics, and the GIS User Community



Legend

- MHs to Grout
- Manholes
- ★ PumpStation
- Cleanouts
- Arterial TCP
- Mainlines

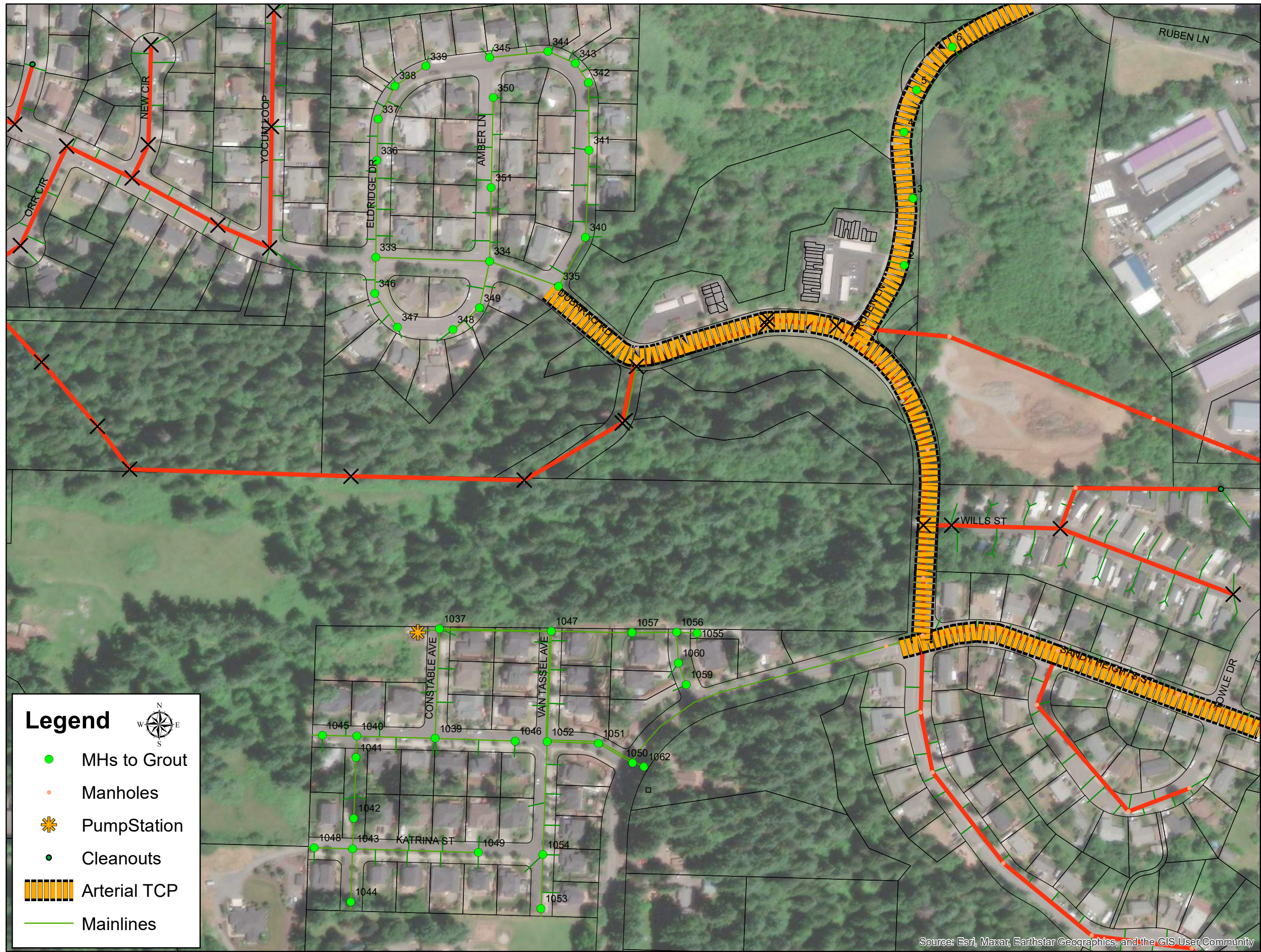
DATE: 12/7/2022
 SCALE: NTS
 PAGE: 5 OF 17

The information shown was prepared for use by the City of Sandy and no other purpose. The City of Sandy will not be responsible for any errors and omissions if used by others. All information MUST BE FIELD VERIFIED to substantiate its validity

PROJECT NAME: I&I Grouting Program Phase 1
 SHEET NAME/ LOCATION: Priority 1 Sheet 2
 37485 Sandy Heights St

DEPARTMENT OF PUBLIC WORKS
 39250 PIONEER BLVD
 SANDY, OR 97055
 503-668-5533

Source: Esri, Maxar, Earthstar Geographics, and the GIS User Community



Legend

- MHs to Grout
- Manholes
- ★ PumpStation
- Cleanouts
- Arterial TCP
- Mainlines

DATE: 12/7/2022
 SCALE: NTS
 PAGE: 6 OF 17

The information shown was prepared for use by the City of Sandy and no other purpose. The City of Sandy will not be responsible for any errors and omissions if used by others. All information MUST BE FIELD VERIFIED to substantiate its validity

PROJECT NAME: I&I Grouting Program Phase 1
 SHEET NAME/ LOCATION: Priority 2 Sheet 1
 36800 Double Creek Dr

SANDY
 WHERE INNOVATION MEETS ELEVATION

DEPARTMENT OF PUBLIC WORKS
 39250 PIONEER BLVD
 SANDY, OR 97055
 503-668-5533

Source: Esri, Maxar, Earthstar Geographics, and the GIS User Community



Legend

- MHs to Grout
- Manholes
- PumpStation
- Cleanouts
- Arterial TCP
- Mainlines




Source: Esri, Maxar, Earthstar Geographics, and the GIS User Community

DATE: **12/7/2022**
 SCALE: **NTS**
 PAGE: **7 OF 17**

The information shown was prepared for use by the City of Sandy and no other purpose.
 The City of Sandy will not be responsible for any errors and omissions if used by others.
 All information MUST BE FIELD VERIFIED to substantiate its validity

PROJECT NAME: **I&I Grouting Program Phase 1**
 SHEET NAME/ LOCATION: **Priority 2 Sheet 2
 37831 Sandy Heights St**



DEPARTMENT OF PUBLIC WORKS
 39250 PIONEER BLVD
 SANDY, OR 97055
 503-668-5533



Legend

- MHs to Grout
- Manholes
- Pump Station
- Cleanouts
- Arterial TCP
- Mainlines

Source: Esri, Maxar, Earthstar Geographics, and the GIS User Community

DATE: 12/7/2022

SCALE: NTS

PAGE: 8 OF 17

The information shown was prepared for use by the City of Sandy and no other purpose. The City of Sandy will not be responsible for any errors and omissions if used by others. All information MUST BE FIELD VERIFIED to substantiate its validity

PROJECT NAME: I&I Grouting Program Phase 1

SHEET NAME/ LOCATION: Priority 2 Sheet 3
18214 Grey Ave

DEPARTMENT OF PUBLIC WORKS
 39250 PIONEER BLVD
 SANDY, OR 97055
 503-668-5533



Legend


- MHs to Grout
- Manholes
- PumpStation
- Cleanouts
- Arterial TCP
- Mainlines

DATE: 12/7/2022
 SCALE: NTS
 PAGE: 9 OF 17

The information shown was prepared for use by the City of Sandy and no other purpose. The City of Sandy will not be responsible for any errors and omissions if used by others. All information MUST BE FIELD VERIFIED to substantiate its validity

PROJECT NAME: I&I Grouting Program Phase 1

SHEET NAME/ LOCATION: Priority 2 Sheet 4
 17820 Loundree Dr



DEPARTMENT OF PUBLIC WORKS
 39250 PIONEER BLVD
 SANDY, OR 97055
 503-668-5533

Source: Esri, Maxar, Earthstar Geographics, and the GIS User Community



Legend

- MHs to Grout
- Manholes
- PumpStation
- Cleanouts
- Arterial TCP
- Mainlines



Source: Esri, Maxar, Earthstar Geographics, and the GIS User Community

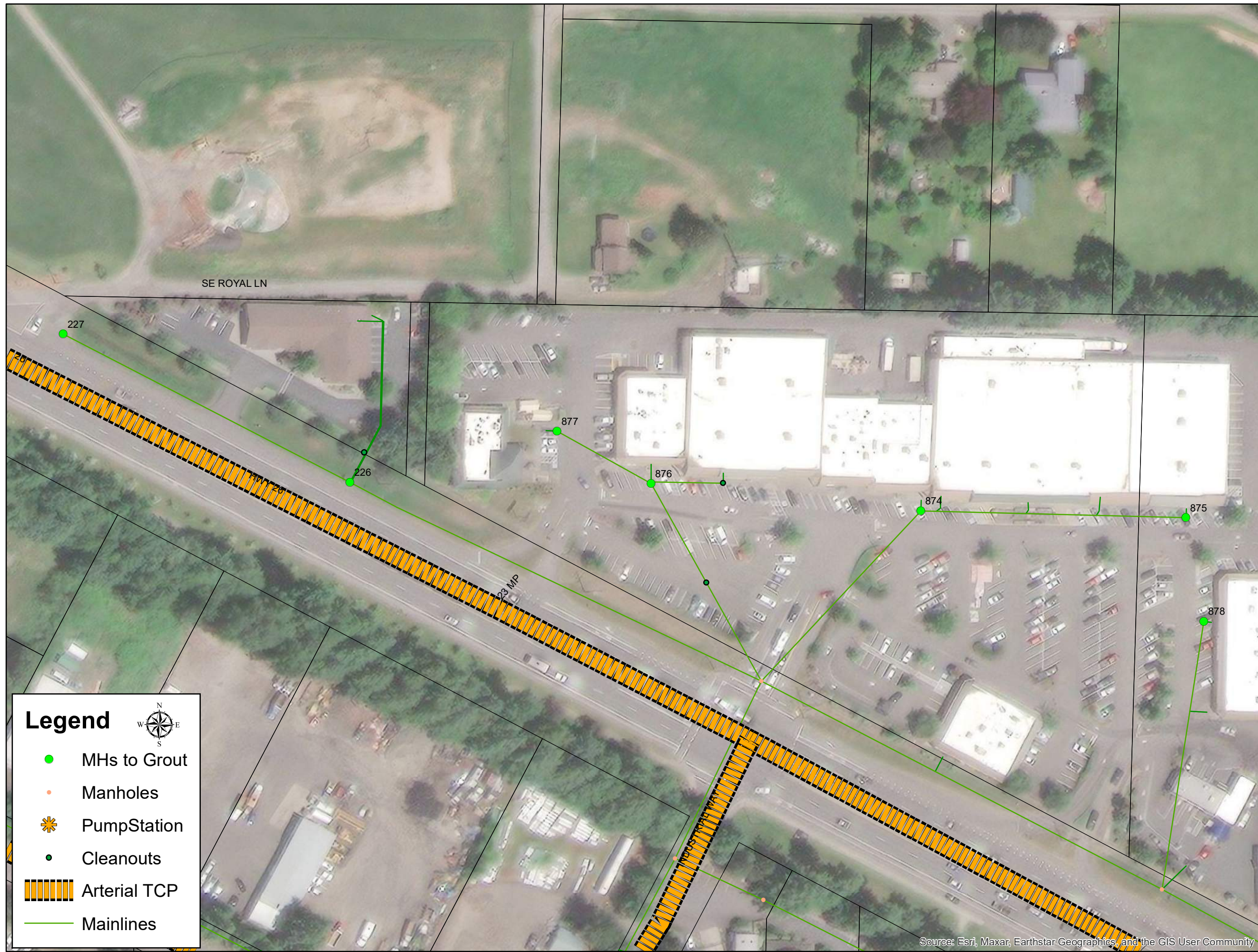
DATE:	12/7/2022
SCALE:	NTS
PAGE:	10 OF 17

The information shown was prepared for use by the City of Sandy and no other purpose. The City of Sandy will not be responsible for any errors and omissions if used by others. All information MUST BE FIELD VERIFIED to substantiate its validity

PROJECT NAME:	I&I Grouting Program Phase 1
SHEET NAME/ LOCATION:	Priority 2 Sheet 5 16633 Champion Way

SANDY
WHERE INNOVATION MEETS ELEVATION

DEPARTMENT OF PUBLIC WORKS
39250 PIONEER BLVD
SANDY, OR 97055
503-668-5533



Source: Esri, Maxar, Earthstar Geographics, and the GIS User Community

The information shown was prepared for use by the City of Sandy and no other purpose. The City of Sandy will not be responsible for any errors and omissions if used by others. All information MUST BE FIELD VERIFIED to substantiate its validity

PROJECT NAME:	I&I Grouting Program Phase 1
SHEET NAME/ LOCATION :	Priority 2 Sheet 6 36859 Mt Hood Hwy

DEPARTMENT OF PUBLIC WORKS
39250 PIONEER BLVD
SANDY, OR 97055
503-668-5533



Legend



- MHs to Grout
- Manholes
- Pump Station
- Cleanouts
- Arterial TCP
- Mainlines

Source: Esri, Maxar, Earthstar Geographics, and the GIS User Community

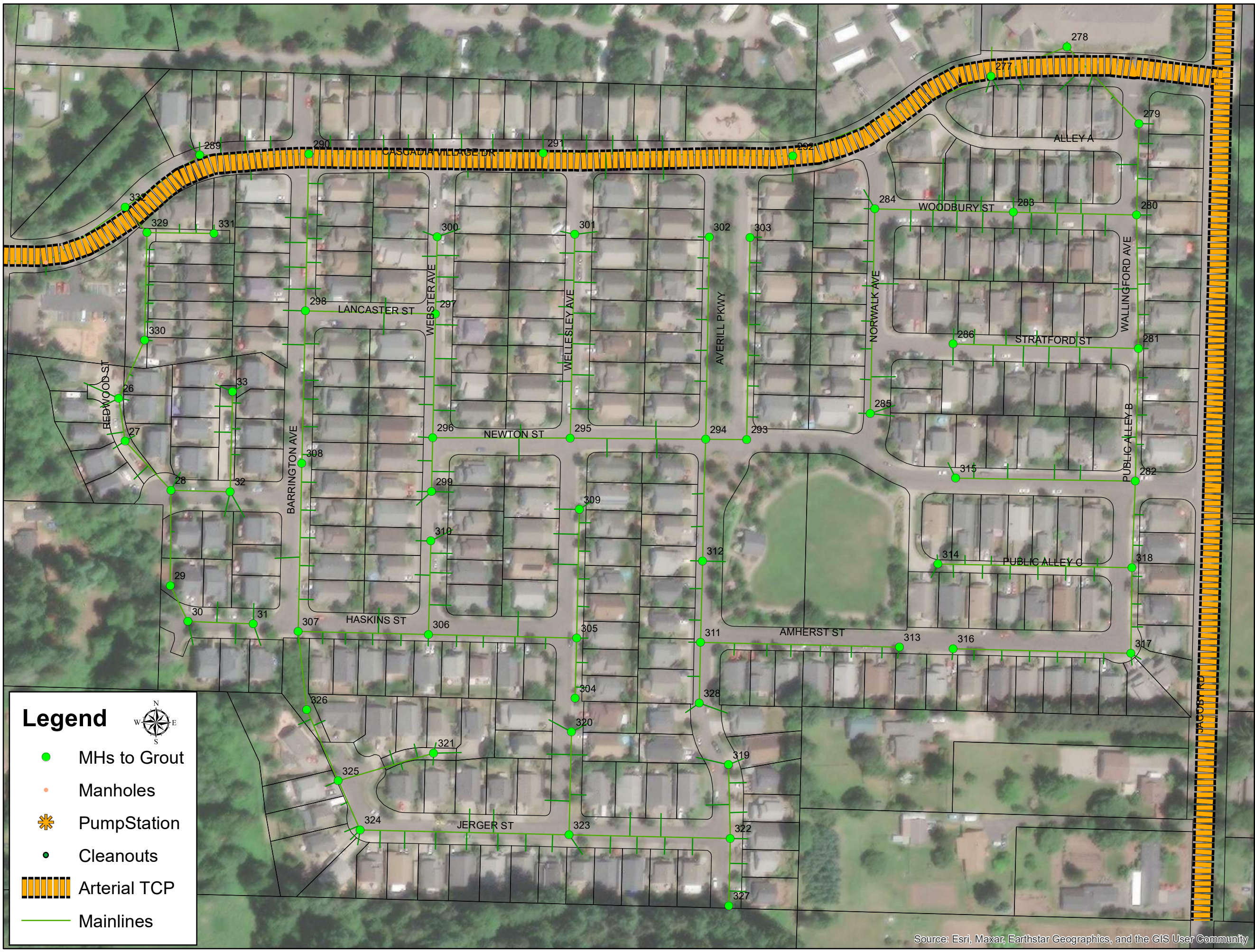
DATE: 12/7/2022
 SCALE: NTS
 PAGE: 12 OF 17

The information shown was prepared for use by the City of Sandy and no other purpose. The City of Sandy will not be responsible for any errors and omissions if used by others. All information MUST BE FIELD VERIFIED to substantiate its validity

PROJECT NAME: I&I Grouting Program Phase 1

SHEET NAME/ LOCATION: Priority 3 Sheet 1
 38533 Barlow Parkway

DEPARTMENT OF PUBLIC WORKS
 39250 PIONEER BLVD
 SANDY, OR 97055
 503-668-5533



Legend

- MHs to Grout
- Manholes
- PumpStation
- Cleanouts
- ▨ Arterial TCP
- Mainlines

Source: Esri, Maxar, Earthstar Geographics, and the GIS User Community

The information shown was prepared for use by the City of Sandy and no other purpose. The City of Sandy will not be responsible for any errors and omissions if used by others. All information MUST BE FIELD VERIFIED to substantiate its validity

DATE: 12/7/2022
 SCALE: NTS
 PAGE: 13 OF 17

PROJECT NAME: I&I Grouting Program Phase 1
 SHEET NAME/ LOCATION: Priority 3 Sheet 2
 19115 Averill Parkway

SANDY
 WHERE INNOVATION MEETS ELEVATION

DEPARTMENT OF PUBLIC WORKS
 39250 PIONEER BLVD
 SANDY, OR 97055
 503-668-5533



Legend

- MHs to Grout
- Manholes
- PumpStation
- Cleanouts
- Arterial TCP
- Mainlines




Source: Esri, Maxar, Earthstar Geographics, and the GIS User Community

DATE:	12/7/2022
SCALE:	NTS
PAGE:	14 OF 17

The information shown was prepared for use by the City of Sandy and no other purpose. The City of Sandy will not be responsible for any errors and omissions if used by others. All information MUST BE FIELD VERIFIED to substantiate its validity.

PROJECT NAME: **I&I Grouting Program Phase 1**

SHEET NAME/ LOCATION: **Priority 3 Sheet 3
38588 Limerick St**



DEPARTMENT OF PUBLIC WORKS
39250 PIONEER BLVD
SANDY, OR 97055
503-668-5533



Legend

- MHs to Grout
- Manholes
- ★ PumpStation
- Cleanouts
- Arterial TCP
- Mainlines



Source: Esri, Maxar, Earthstar Geographics, and the GIS User Community

DATE: 12/7/2022
 SCALE: NTS
 PAGE: 15 OF 17

The information shown was prepared for use by the City of Sandy and no other purpose. The City of Sandy will not be responsible for any errors and omissions if used by others. All information MUST BE FIELD VERIFIED to substantiate its validity

PROJECT NAME: I&I Grouting Program Phase 1
 SHEET NAME/ LOCATION: Priority 3 Sheet 4
 36910 Wall St

DEPARTMENT OF PUBLIC WORKS
 39250 PIONEER BLVD
 SANDY, OR 97055
 503-668-5533



Legend

- MHs to Grout
- Manholes
- PumpStation
- Cleanouts
- Arterial TCP
- Mainlines




Source: Esri, Maxar, Earthstar Geographics, and the GIS User Community

DATE: **12/7/2022**
 SCALE: **NTS**
 PAGE: **16 OF 17**

The information shown was prepared for use by the City of Sandy and no other purpose.
 The City of Sandy will not be responsible for any errors and omissions if used by others.
 All information MUST BE FIELD VERIFIED to substantiate its validity

PROJECT NAME: **I&I Grouting Program Phase 1**
 SHEET NAME/ LOCATION: **Priority 3 Sheet 5
 18340 Langensand Rd**



DEPARTMENT OF PUBLIC WORKS
 39250 PIONEER BLVD
 SANDY, OR 97055
 503-668-5533



Legend

- MHs to Grout
- Manholes
- ✱ Pump Station
- Cleanouts
- Arterial TCP
- Mainlines



Source: Esri, Maxar, Earthstar Geographics, and the GIS User Community

DATE: 12/7/2022
 SCALE: NTS
 PAGE: 17 OF 17

The information shown was prepared for use by the City of Sandy and no other purpose. The City of Sandy will not be responsible for any errors and omissions if used by others. All information MUST BE FIELD VERIFIED to substantiate its validity

PROJECT NAME: I&I Grouting Program Phase 1
 SHEET NAME/ LOCATION: High Flow Offroad 35490 SE HWY 26

SANDY
 WHERE INNOVATION MEETS ELEVATION

DEPARTMENT OF PUBLIC WORKS
 39250 PIONEER BLVD
 SANDY, OR 97055
 503-668-5533