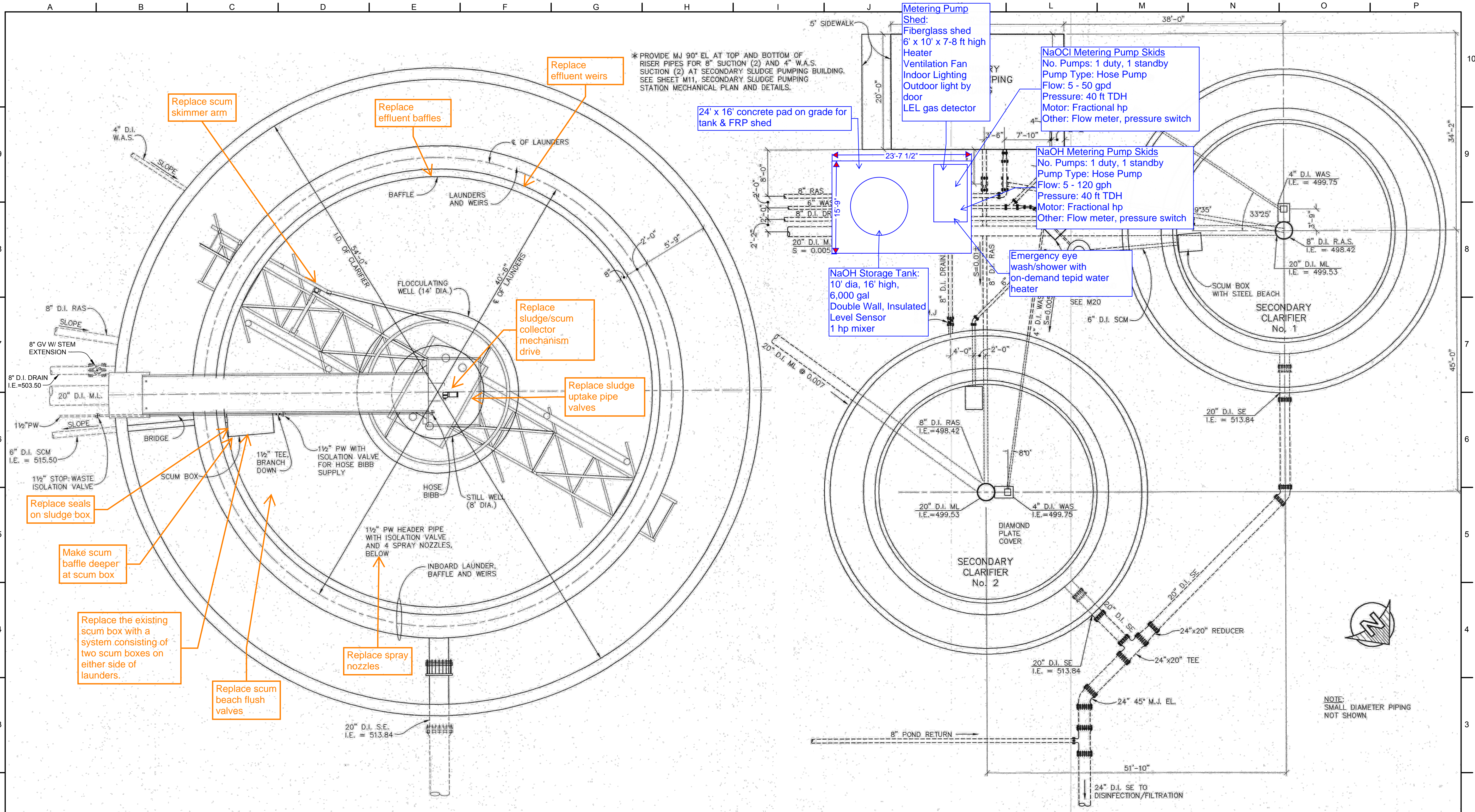


P:\Clients\964 City of Sandy\50-20-01 WWTP Cond Assmnt\CAD\Production\964-50-20-01-M005.dwg 2/10/2021 8:58 AM sbarber



* PROVIDE MJ 90° EL AT TOP AND BOTTOM OF RISER PIPES FOR 8" SUCTION (2) AND 4" W.A.S. SUCTION (2) AT SECONDARY SLUDGE PUMPING BUILDING. SEE SHEET M11, SECONDARY SLUDGE PUMPING STATION MECHANICAL PLAN AND DETAILS.

Replace scum skimmer arm

Replace effluent baffles

Replace effluent weirs

24' x 16' concrete pad on grade for tank & FRP shed

Metering Pump Shed:
Fiberglass shed
6' x 10' x 7-8 ft high
Heater
Ventilation Fan
Indoor Lighting
Outdoor light by door
LEL gas detector

NaOCl Metering Pump Skids
No. Pumps: 1 duty, 1 standby
Pump Type: Hose Pump
Flow: 5 - 50 gpd
Pressure: 40 ft TDH
Motor: Fractional hp
Other: Flow meter, pressure switch

NaOH Metering Pump Skids
No. Pumps: 1 duty, 1 standby
Pump Type: Hose Pump
Flow: 5 - 120 gph
Pressure: 40 ft TDH
Motor: Fractional hp
Other: Flow meter, pressure switch

NaOH Storage Tank:
10' dia, 16' high,
6,000 gal
Double Wall, Insulated
Level Sensor
1 hp mixer

Emergency eye wash/shower with on-demand tepid water heater

Replace sludge/scum collector mechanism drive

Replace sludge uptake pipe valves

Replace seals on sludge box

Make scum baffle deeper at scum box

Replace the existing scum box with a system consisting of two scum boxes on either side of launders.

Replace scum beach flush valves

Replace spray nozzles

NOTE:
SMALL DIAMETER PIPING NOT SHOWN

2 CLARIFIER PIPING PLAN NO.1
M10 (TYPICAL OF 2 WITH MODIFIED PIPING ORIENTATION)
SCALE: 1/4" = 1'

1 SECONDARY CLARIFIER PIPING PLAN
M10 SCALE: 1/8" = 1'

AS CONSTRUCTED SEPTEMBER

NOT FOR CONSTRUCTION

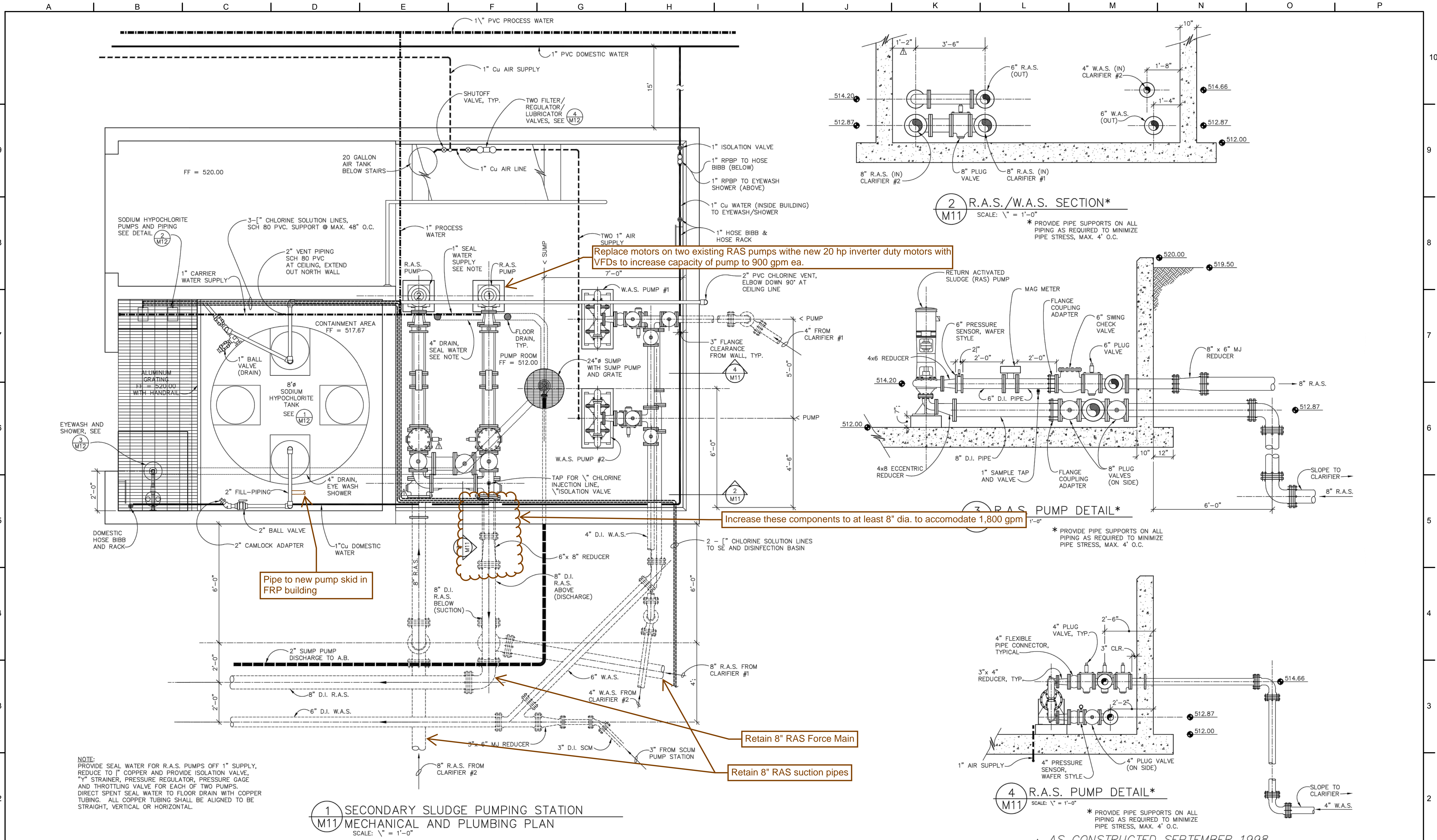
THIS LINE IS 1 INCH AT FULL SCALE IF NOT SCALE ACCORDINGLY				
SCALE :	AS SHOWN			
DRAWN BY :	SMB			
DESIGNED BY :	WJS			
PROJ. MGR. :	PVM			
No.	ZONE	REVISIONS	BY	DATE



CITY OF SANDY
WASTE WATER TREATMENT FACILITY
IMPROVEMENTS
SECONDARY CLARIFIER
MECHANICAL PIPING PLAN

JOB NUMBER	964-50-20-01
DRAWING NUMBER	M005
SHEET NUMBER	X OF XX
REVISION	

P:\Clients\964 City of Sandy\50-20-01 WWTP Cond Assmnt\CAD\Production\964-50-20-01-M006.dwg 2/10/2021 9:24 AM sbarber



1 SECONDARY SLUDGE PUMPING STATION
M11/MECHANICAL AND PLUMBING PLAN
SCALE: 1" = 1'-0"

2 R.A.S./W.A.S. SECTION*
M11 SCALE: 1" = 1'-0"

3 R.A.S. PUMP DETAIL*
M11 SCALE: 1" = 1'-0"

4 R.A.S. PUMP DETAIL*
M11 SCALE: 1" = 1'-0"

NOTE:
PROVIDE SEAL WATER FOR R.A.S. PUMPS OFF 1" SUPPLY, REDUCE TO 1" COPPER AND PROVIDE ISOLATION VALVE.
"Y" STRAINER, PRESSURE REGULATOR, PRESSURE GAGE AND THROTTLING VALVE FOR EACH OF TWO PUMPS.
DIRECT SPENT SEAL WATER TO FLOOR DRAIN WITH COPPER TUBING. ALL COPPER TUBING SHALL BE ALIGNED TO BE STRAIGHT, VERTICAL OR HORIZONTAL.

NOT FOR CONSTRUCTION

THIS LINE IS 1 INCH AT FULL SCALE IF NOT SCALE ACCORDINGLY	
SCALE :	NO SCALE
DRAWN BY :	SMB
DESIGNED BY :	WJS
PROJ. MGR. :	PVM

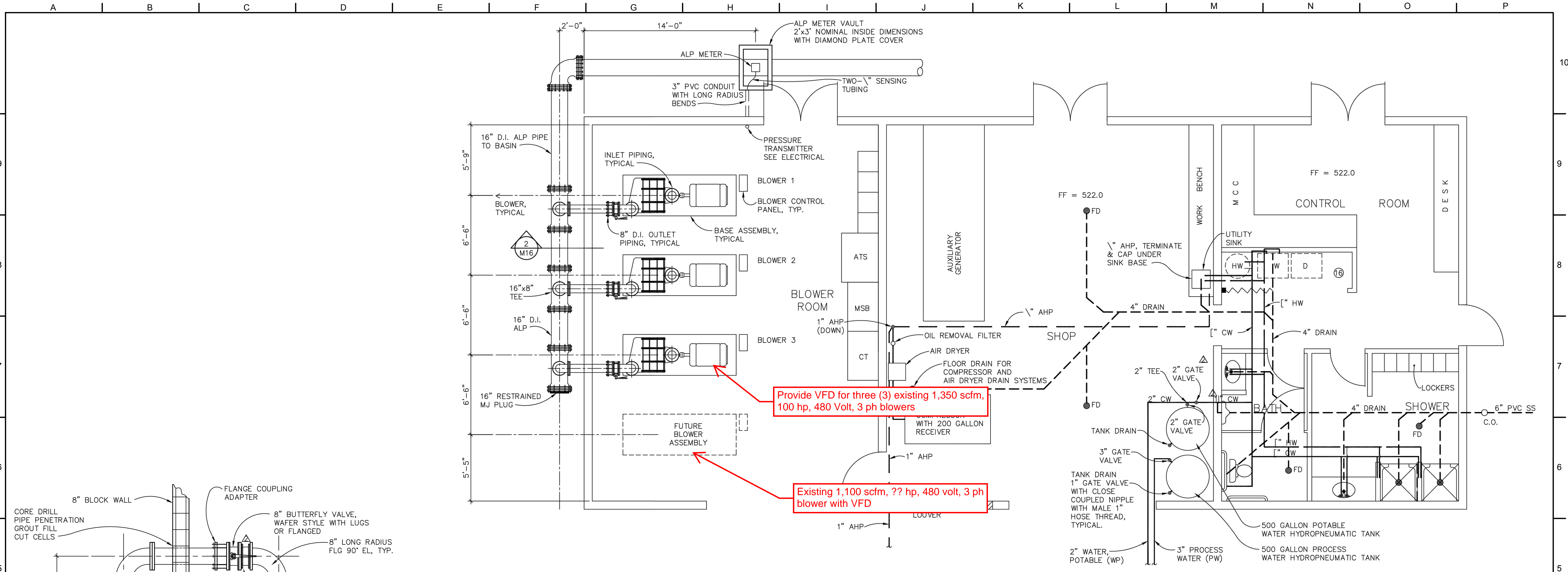
No.	ZONE	REVISIONS	BY	DATE



CITY OF SANDY
WASTE WATER TREATMENT FACILITY IMPROVEMENTS
SECONDARY SLUDGE PUMPING STATION
MECHANICAL PLAN AND SECTIONS

JOB NUMBER	964-50-20-01
DRAWING NUMBER	M006
SHEET NUMBER	X OF XX
REVISION	

P:\Clients\964 City of Sandy\50-20-01 WWTP Cond Assmnt\CAD\Production\964-50-20-01-M007.dwg 2/10/2021 9:55 AM sbarber



Provide VFD for three (3) existing 1,350 scfm, 100 hp, 480 Volt, 3 ph blowers

Existing 1,100 scfm, ?? hp, 480 volt, 3 ph blower with VFD

1 BLOWER BUILDING MECHANICAL & PLUMBING PLAN
 M16 SCALE: 1" = 1'-0"

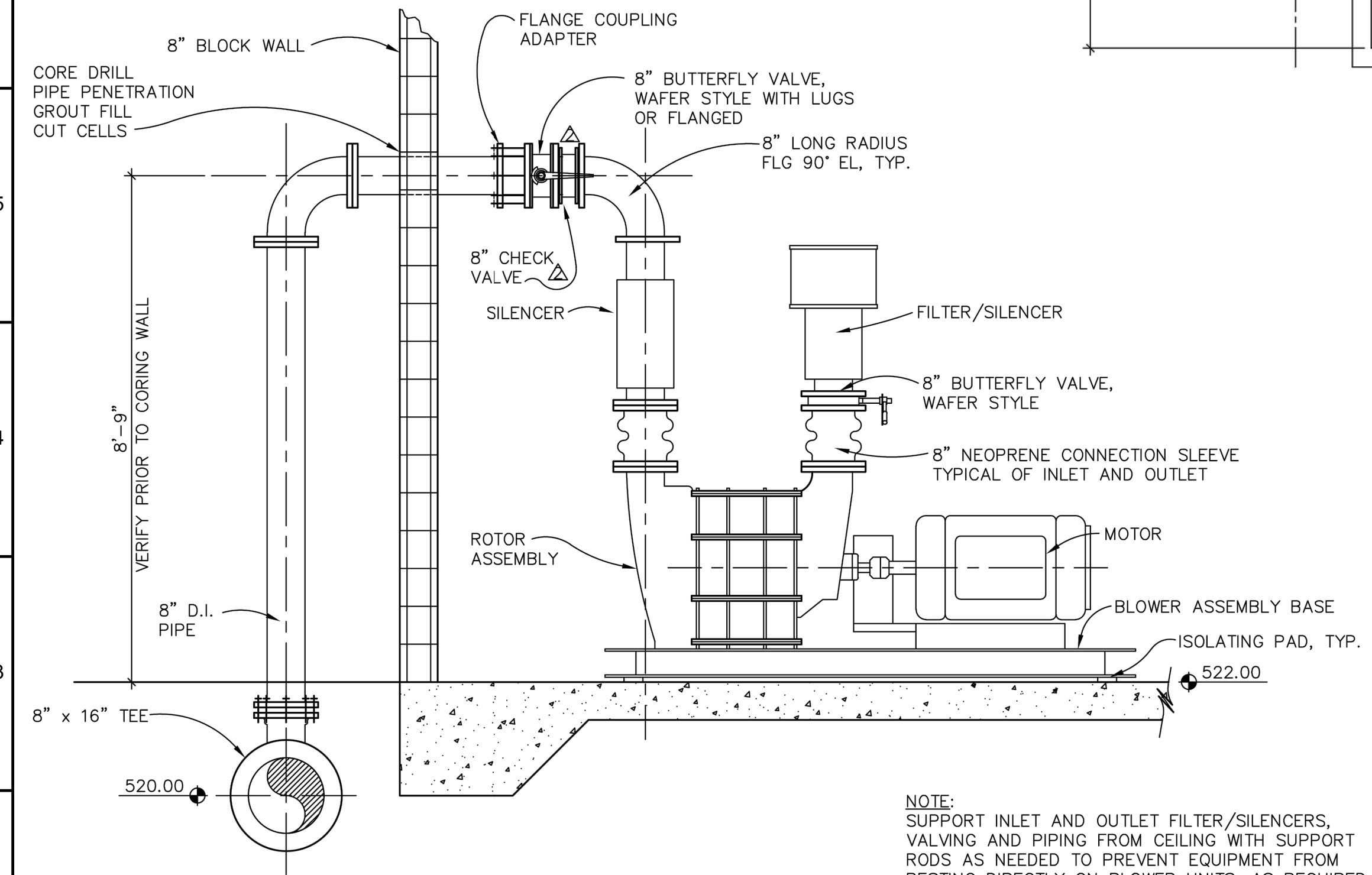
PLUMBING LEGEND:

CW	COLD WATER
HW	HOT WATER
---	DRAIN
AHP	AIR HIGH PRESSURE

- PLUMBING NOTES:**
- THE PLUMBING SHOWN ON THE BLOWER/MAINTENANCE BUILDING MECHANICAL AND PLUMBING PLAN ONLY REPRESENTS A SCHEMATIC OF THE PLUMBING LAYOUT TO SHOW THE APPROXIMATE LOCATION AND SIZE OF PLUMBING FEATURES. A CERTIFIED PLUMBER IS REQUIRED TO INSTALL ALL PLUMBING FEATURES IN ACCORDANCE WITH THE UNIFORM PLUMBING CODE (UPC).
 - PROPERLY VENT ALL DRAIN LINES AS REQUIRED BY THE UPC. VENTS SHALL BE CONSOLIDATED AS MUCH AS POSSIBLE AND VENTED UP THROUGH ROOF.
 - PROVIDE THE PROPER LINE SIZE FOR ALL PLUMBING FIXTURES AS REQUIRED BY THE UPC AND THE FIXTURE TYPE. ALL WATER PIPING, HOT WATER (HW) AND COLD WATER (CW), SHALL BE TYPE K COPPER.
 - PROVIDE STANDARD WASHING MACHINE HOOK-UPS IN THE CONTROL ROOM UTILITY CLOSET.

MOP SINK AND FIXTURES SPECIFIED IN DIVISION 15, ITEM 15.3.2.9 SHALL BE INSTALLED IMMEDIATELY NORTH OF THE POTABLE WATER HYDROPNEUMATIC TANK. PROVIDE HOT AND COLD WATER PLUMBING AS REQUIRED.

ADDENDUM #1 ITEM 41



2 BLOWER DETAILS
 M16 SCALE: 1/4" = 1'-0"

NOTE: SUPPORT INLET AND OUTLET FILTER/SILENCERS, VALVING AND PIPING FROM CEILING WITH SUPPORT RODS AS NEEDED TO PREVENT EQUIPMENT FROM RESTING DIRECTLY ON BLOWER UNITS, AS REQUIRED BY BLOWER MANUFACTURER. REINFORCE CEILING AS NEEDED TO ACCOMMODATE SUPPORT ASSEMBLIES.

AS CONSTRUCTED SEPTEMBER 1998

NOT FOR CONSTRUCTION

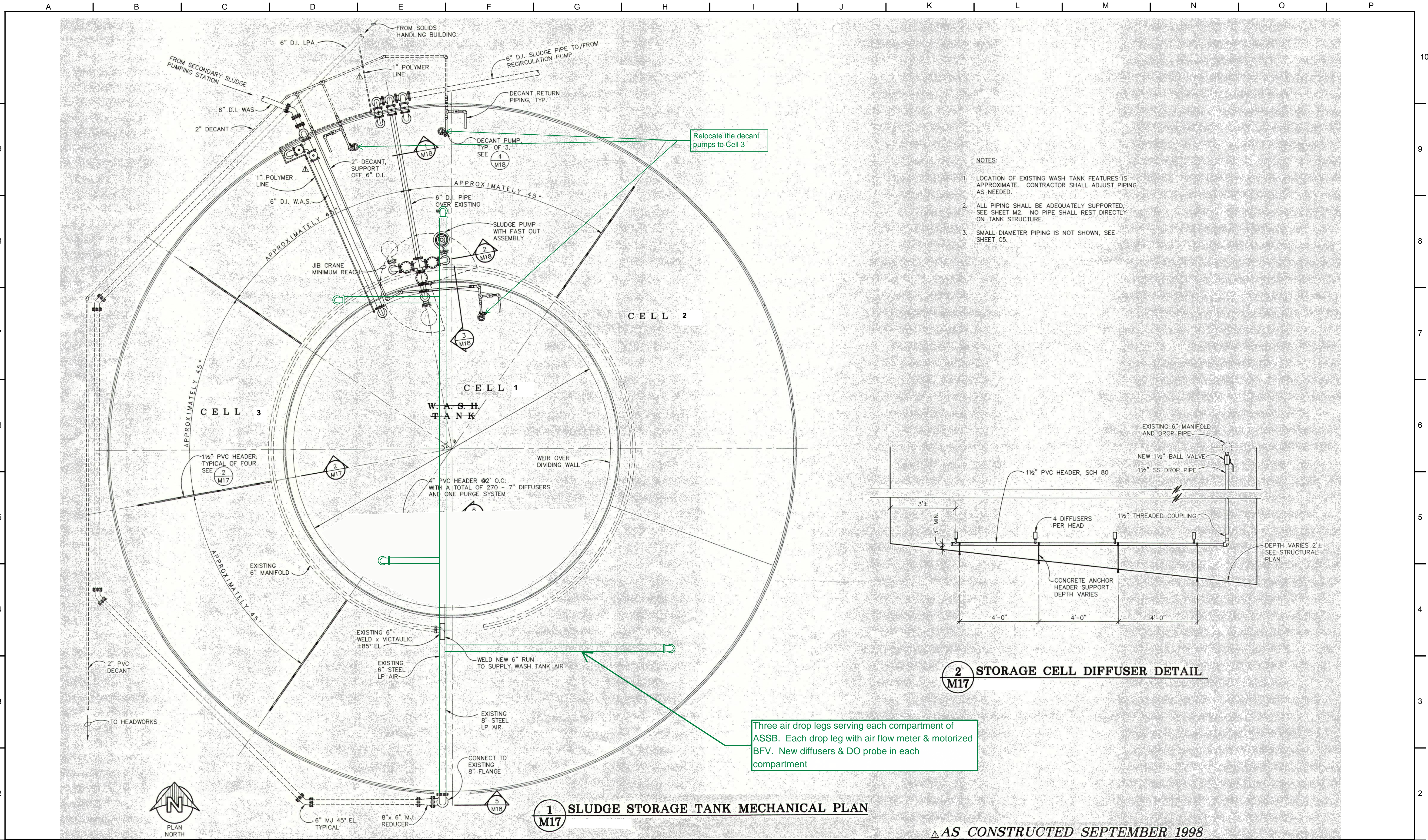
THIS LINE IS 1 INCH AT FULL SCALE IF NOT SCALE ACCORDINGLY				
SCALE :	AS SHOWN			
DRAWN BY :	SMB			
DESIGNED BY :	WJS			
PROJ. MGR. :	PVM			
No.	ZONE	REVISIONS	BY	DATE



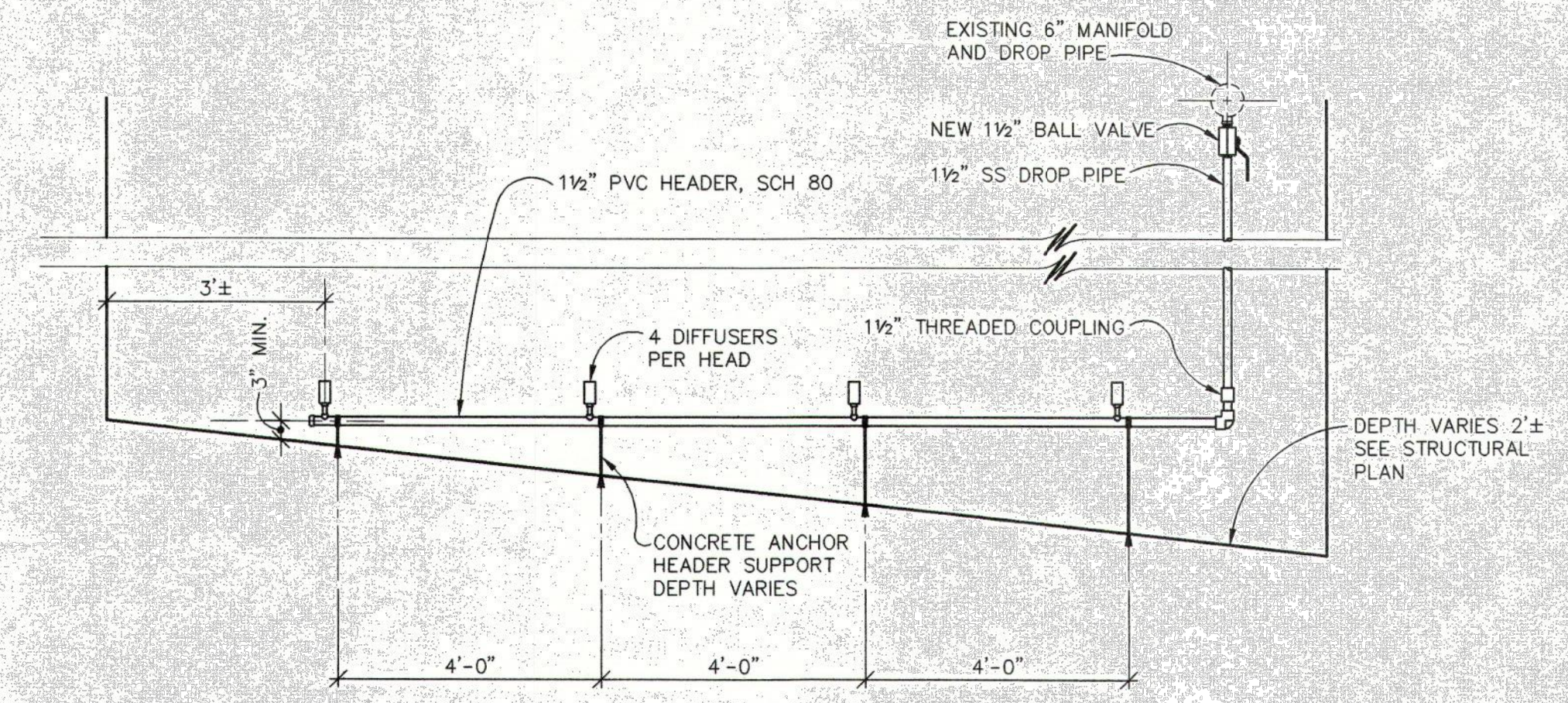
CITY OF SANDY
WASTE WATER TREATMENT FACILITY IMPROVEMENTS
BLOWER/MAINTENANCE BUILDING MECHANICAL & PLUMBING PLAN

JOB NUMBER	964-50-20-01
DRAWING NUMBER	M007
SHEET NUMBER	X OF XX
REVISION	

P:\Clients\964 City of Sandy\50-20-01 WWTP Cond Assmnt\CAD\Production\964-50-20-01-M008.dwg 2/10/2021 9:57 AM sbarber



- NOTES:**
1. LOCATION OF EXISTING WASH TANK FEATURES IS APPROXIMATE. CONTRACTOR SHALL ADJUST PIPING AS NEEDED.
 2. ALL PIPING SHALL BE ADEQUATELY SUPPORTED, SEE SHEET M2. NO PIPE SHALL REST DIRECTLY ON TANK STRUCTURE.
 3. SMALL DIAMETER PIPING IS NOT SHOWN, SEE SHEET C5.



2 STORAGE CELL DIFFUSER DETAIL
M17

Three air drop legs serving each compartment of ASSB. Each drop leg with air flow meter & motorized BFV. New diffusers & DO probe in each compartment

1 SLUDGE STORAGE TANK MECHANICAL PLAN
M17

AS CONSTRUCTED SEPTEMBER 1998

NOT FOR CONSTRUCTION

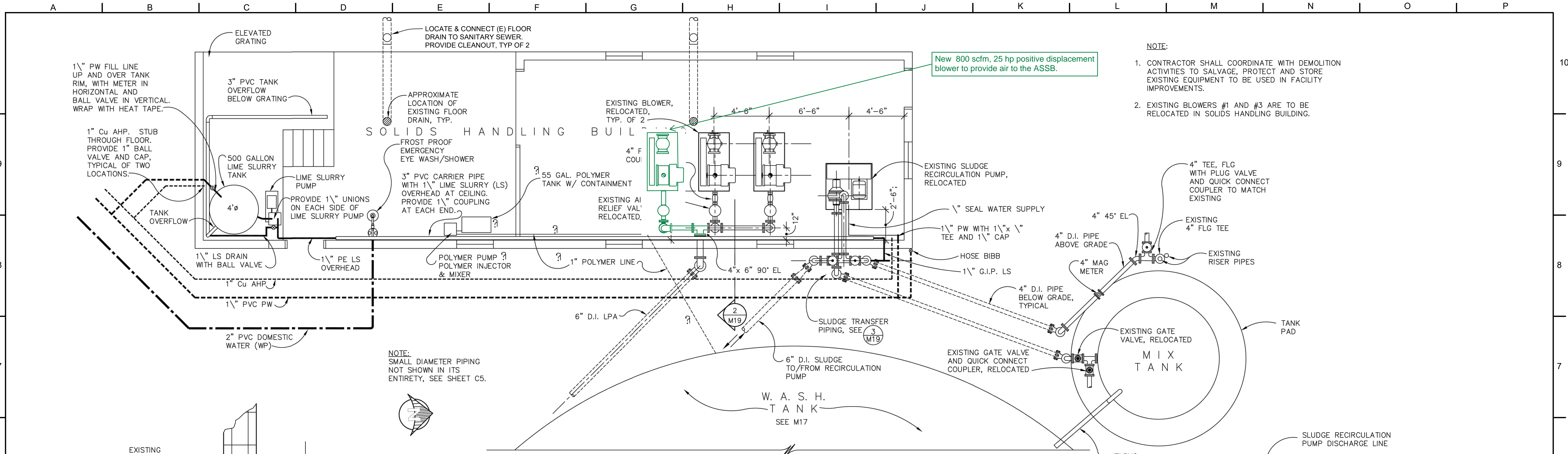
THIS LINE IS 1 INCH AT FULL SCALE IF NOT SCALE ACCORDINGLY				
SCALE :	NO SCALE			
DRAWN BY :	SMB			
DESIGNED BY :	WJS			
PROJ. MGR. :	PVM			
No.	ZONE	REVISIONS	BY	DATE



CITY OF SANDY
WASTE WATER TREATMENT FACILITY IMPROVEMENTS
SLUDGE STORAGE TANK MECHANICAL PLAN

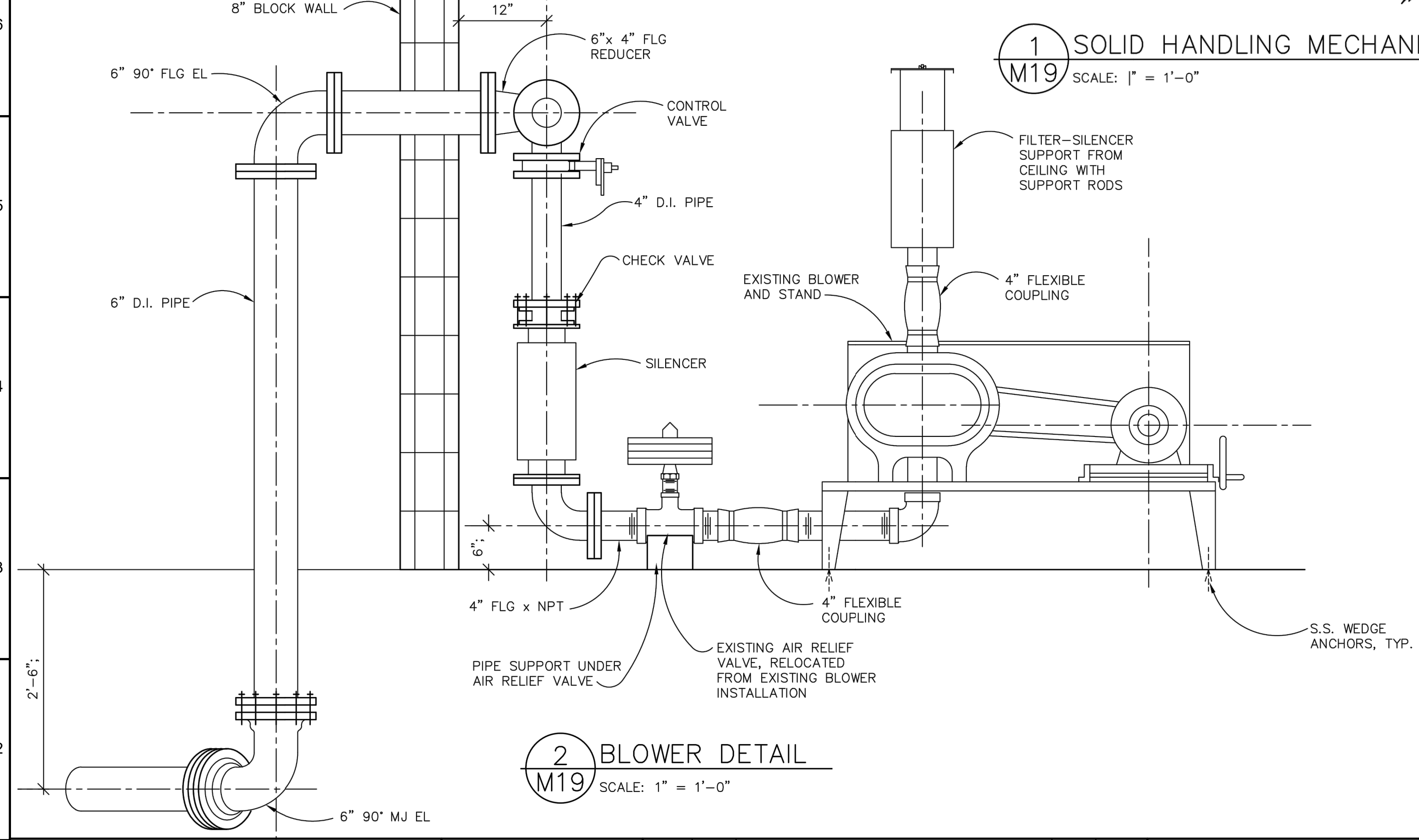
JOB NUMBER	964-50-20-01
DRAWING NUMBER	M008
SHEET NUMBER	X OF XX
REVISION	

P:\Clients\964 City of Sandy\50-20-01 WWTP Cond Assmnt\CAD\Production\964-50-20-01-M009.dwg 2/11/2021 12:14 PM sbarber

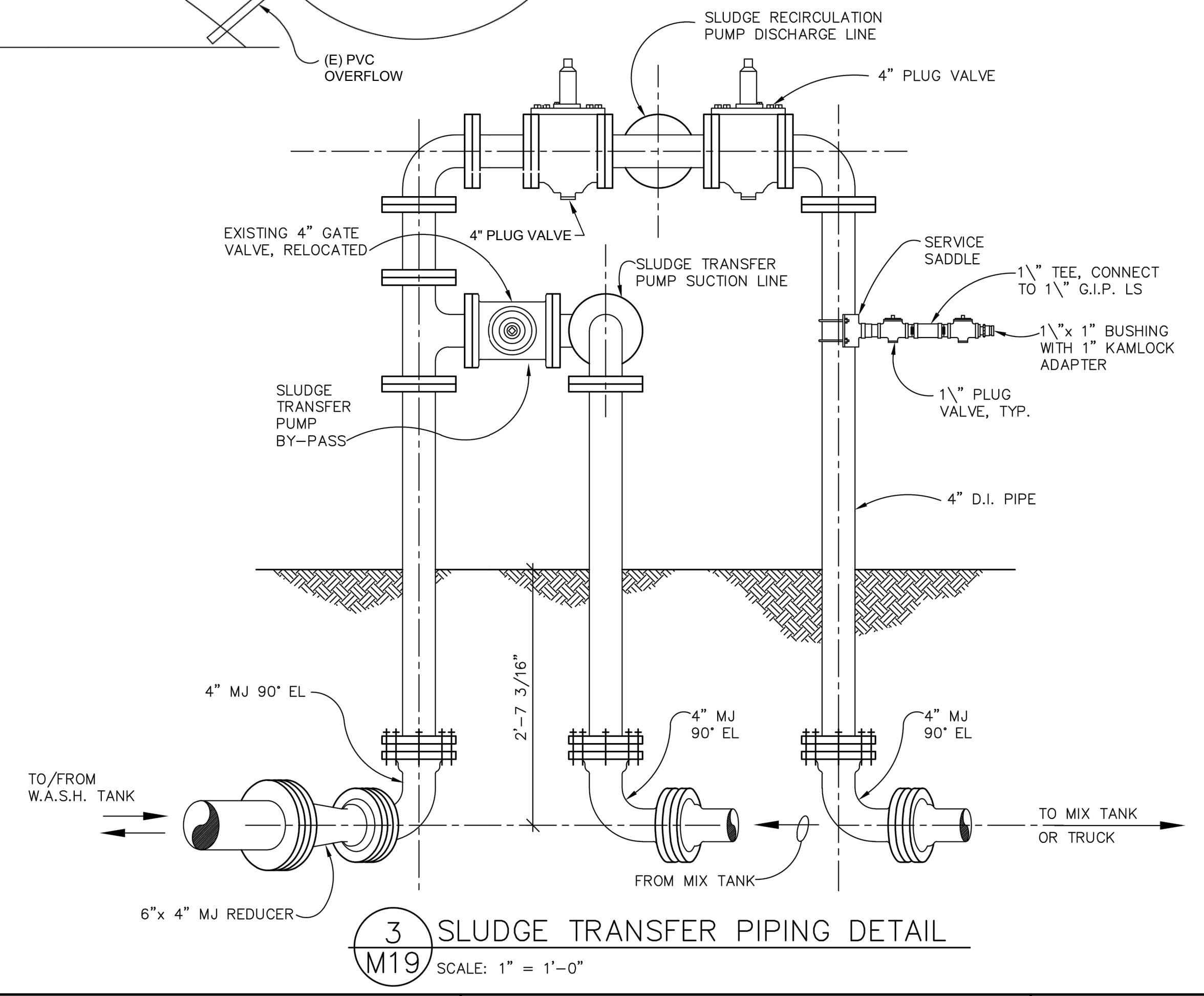


- NOTE:
- CONTRACTOR SHALL COORDINATE WITH DEMOLITION ACTIVITIES TO SALVAGE, PROTECT AND STORE EXISTING EQUIPMENT TO BE USED IN FACILITY IMPROVEMENTS.
 - EXISTING BLOWERS #1 AND #3 ARE TO BE RELOCATED IN SOLIDS HANDLING BUILDING.

1 SOLID HANDLING MECHANICAL PLAN
M19 SCALE: 1" = 1'-0"



2 BLOWER DETAIL
M19 SCALE: 1" = 1'-0"



3 SLUDGE TRANSFER PIPING DETAIL
M19 SCALE: 1" = 1'-0"

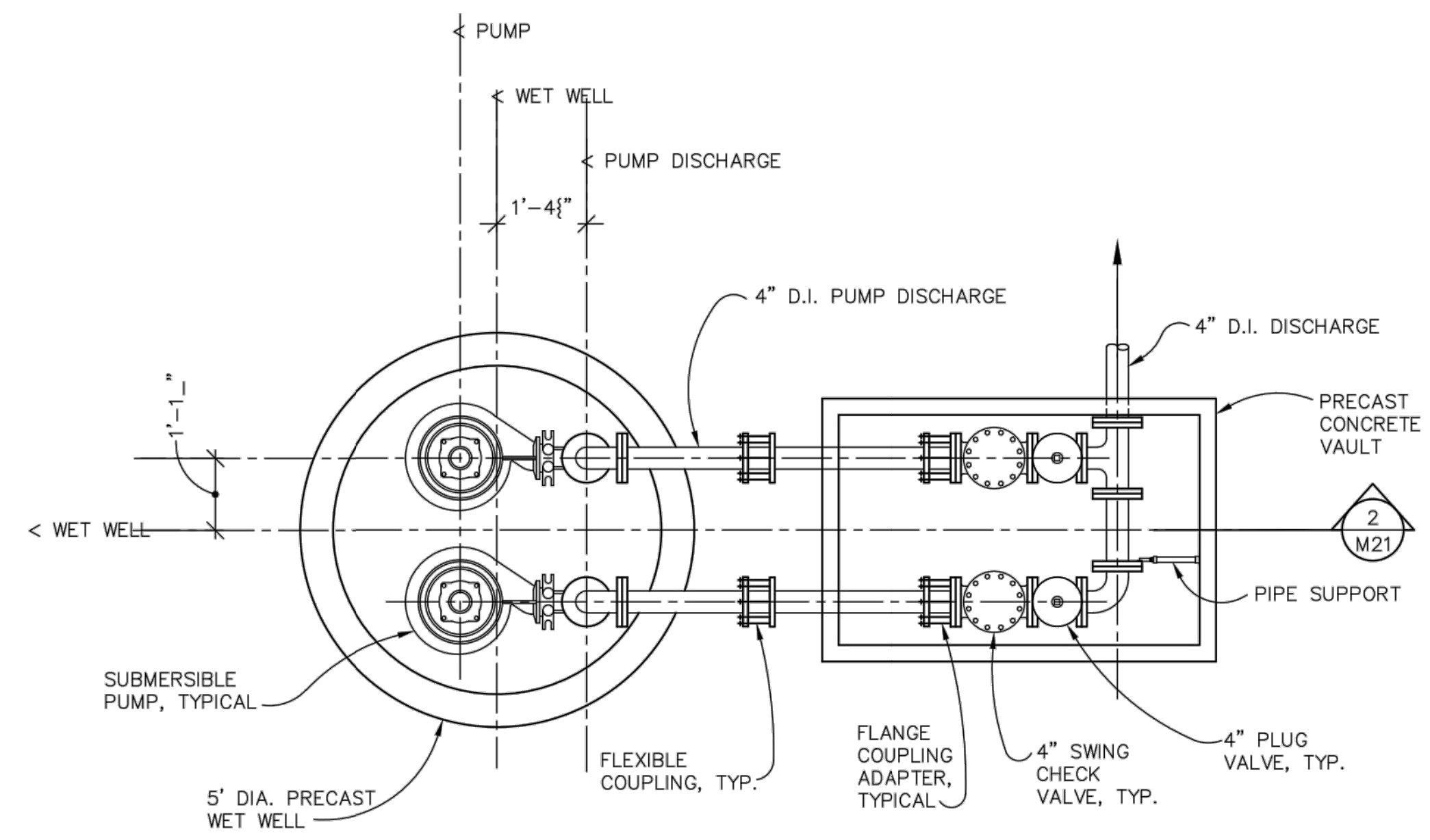
NOT FOR CONSTRUCTION

THIS LINE IS 1 INCH AT FULL SCALE IF NOT SCALE ACCORDINGLY				
SCALE :	NO SCALE			
DRAWN BY :	SMB			
DESIGNED BY :	WJS			
PROJ. MGR. :	PVM			
No.	ZONE	REVISIONS	BY	DATE

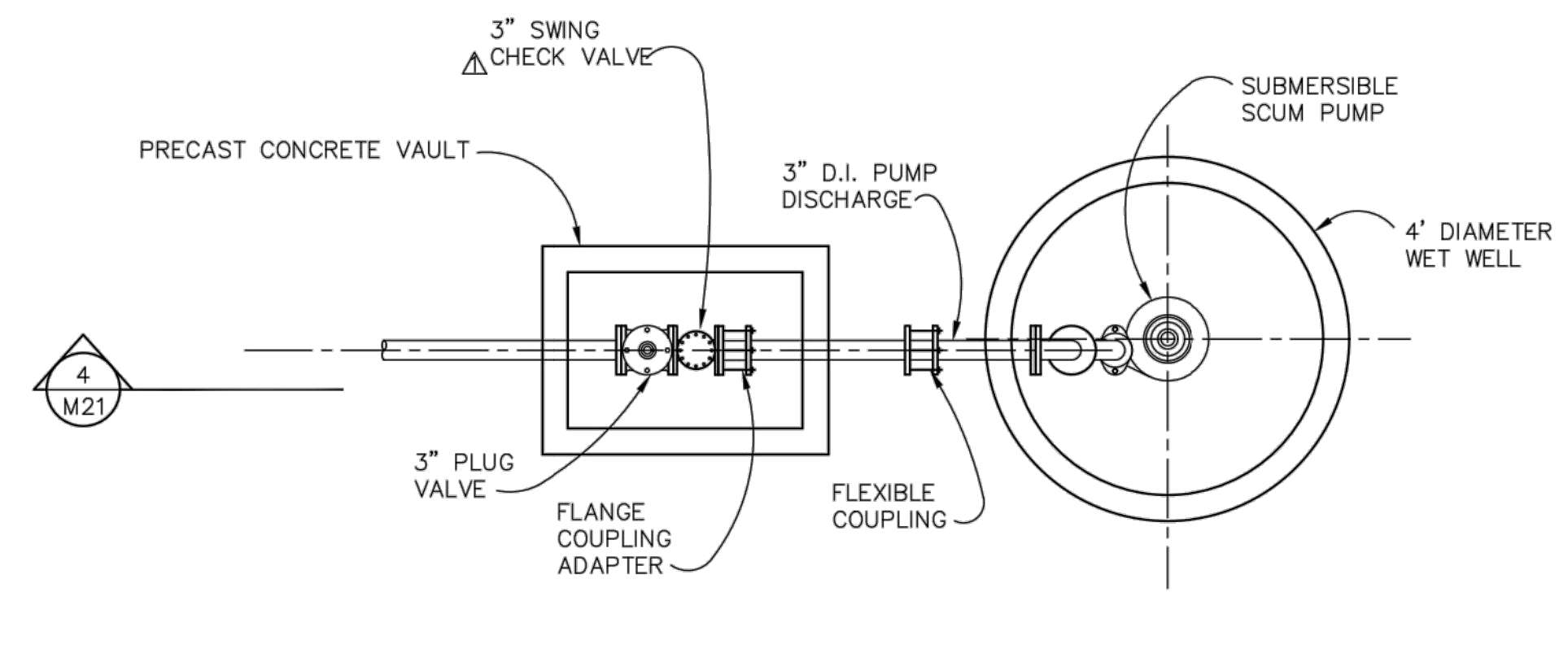


CITY OF SANDY
WASTE WATER TREATMENT FACILITY
IMPROVEMENTS
SOLIDS HANDLING
MECHANICAL PLAN & DETAILS

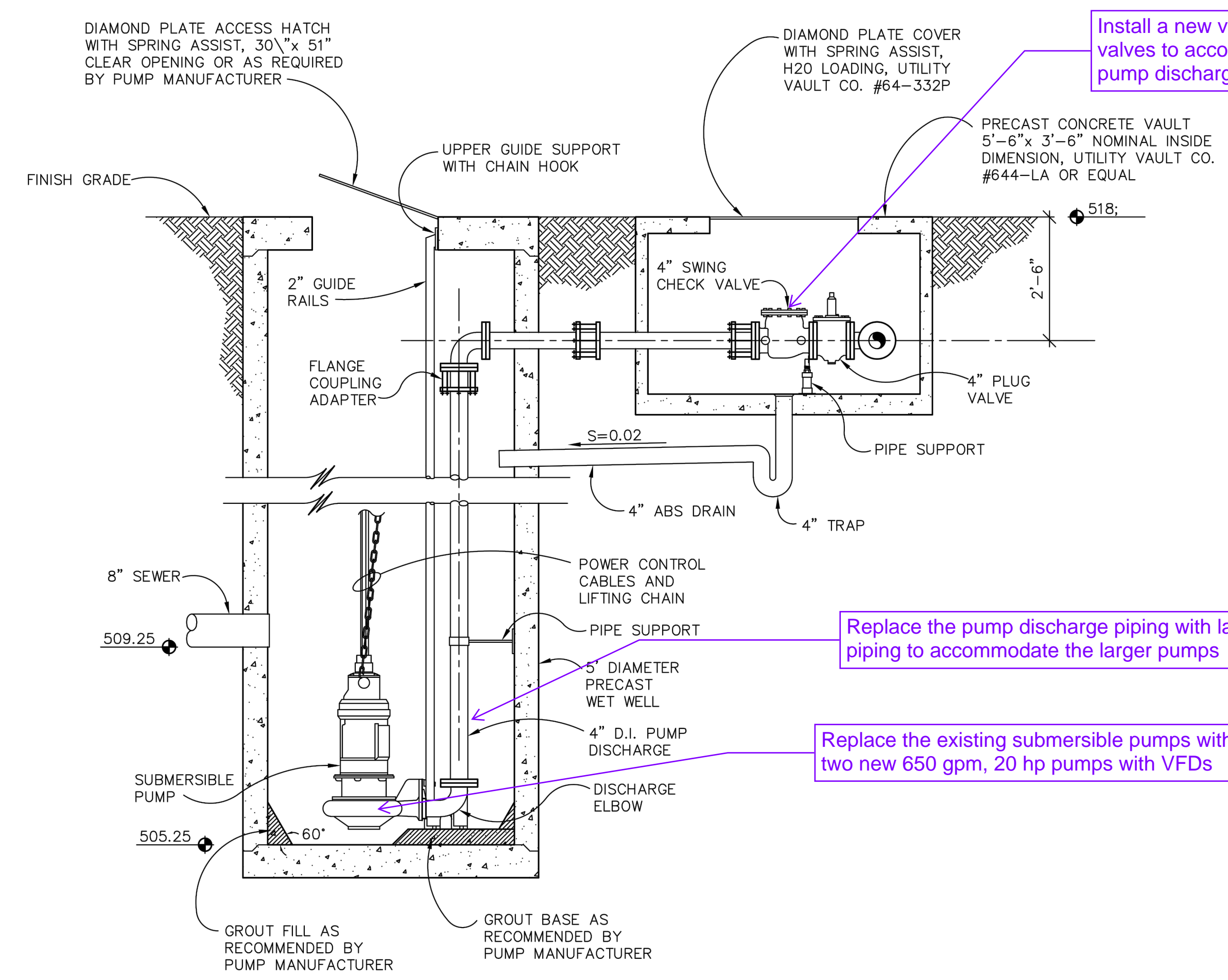
JOB NUMBER	964-50-20-01
DRAWING NUMBER	M009
SHEET NUMBER	X OF XX
REVISION	



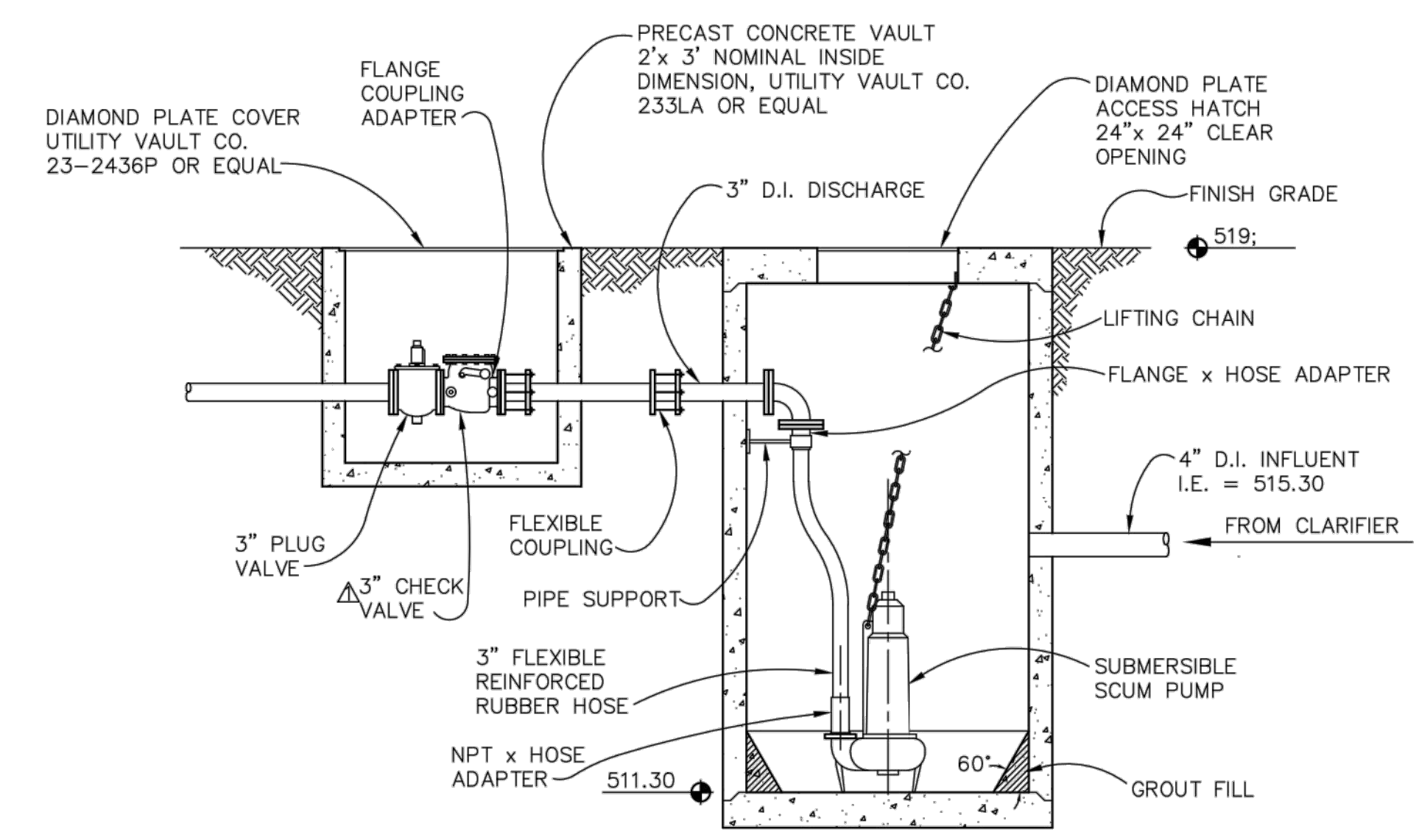
1 WASTE PUMP STATION PLAN
 M20 SCALE: 1" = 1'-0"



2 SCUM PUMP STATION PLAN
 M20 SCALE: 1" = 1'-0"



3 WASTE PUMP STATION SECTION
 M20 SCALE: 1" = 1'-0"



4 SCUM PUMP STATION SECTION
 M20 SCALE: 1" = 1'-0"

Install a new valve vault with new valves to accommodate the large pump discharge piping

Replace the pump discharge piping with larger piping to accommodate the larger pumps

Replace the existing submersible pumps with two new 650 gpm, 20 hp pumps with VFDs

NOT FOR CONSTRUCTION

THIS LINE IS 1 INCH AT FULL SCALE IF NOT SCALE ACCORDINGLY
 SCALE: NO SCALE
 DRAWN BY: SMB
 DESIGNED BY: WJS
 PROJ. MGR.: PVM

No.	ZONE	REVISIONS	BY	DATE

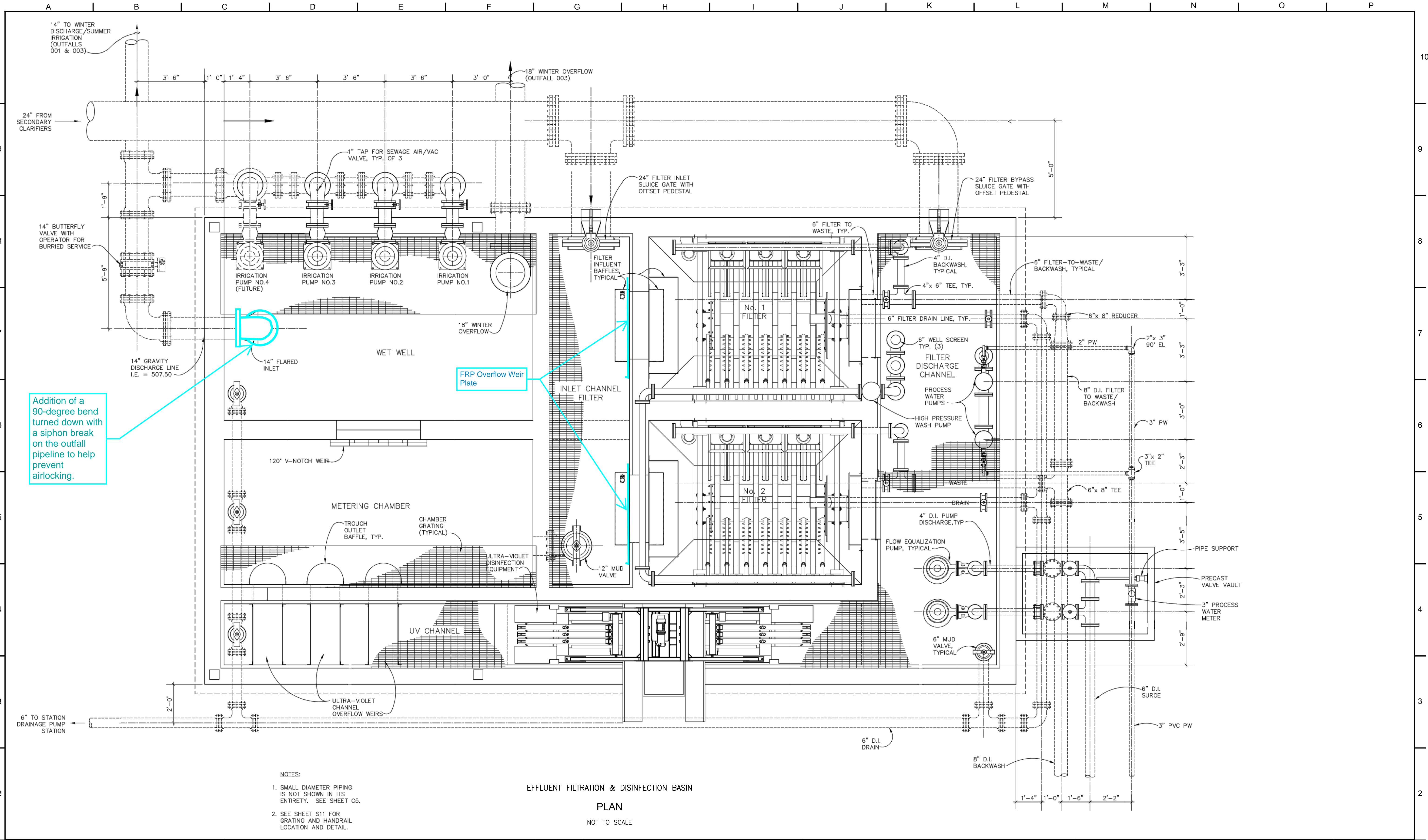


CITY OF SANDY
WASTE WATER TREATMENT FACILITY IMPROVEMENTS
WASTE AND SCUM PUMP STATION PLAN AND DETAILS

JOB NUMBER 964-50-20-01
DRAWING NUMBER M010
SHEET NUMBER X OF XX
REVISION

P:\Clients\964 City of Sandy\50-20-01 WWTP Cond Assmnt\CAD\Production\964-50-20-01-M010.dwg 2/11/2021 12:32 PM sbarber

P:\Clients\964 City of Sandy\50-20-01 WWTP Cond Assmnt\CAD\Production\964-50-20-01-M011.dwg 3/17/2021 11:34 AM sbarber



Addition of a 90-degree bend turned down with a siphon break on the outfall pipeline to help prevent airlocking.

- NOTES:
- SMALL DIAMETER PIPING IS NOT SHOWN IN ITS ENTIRETY. SEE SHEET C5.
 - SEE SHEET S11 FOR GRATING AND HANDRAIL LOCATION AND DETAIL.

EFFLUENT FILTRATION & DISINFECTION BASIN
PLAN
NOT TO SCALE

NOT FOR CONSTRUCTION

THIS LINE IS 1 INCH AT FULL SCALE IF NOT SCALE ACCORDINGLY
SCALE: AS SHOWN
DRAWN BY: SMB
DESIGNED BY: WJS
PROJ. MGR.: PVM

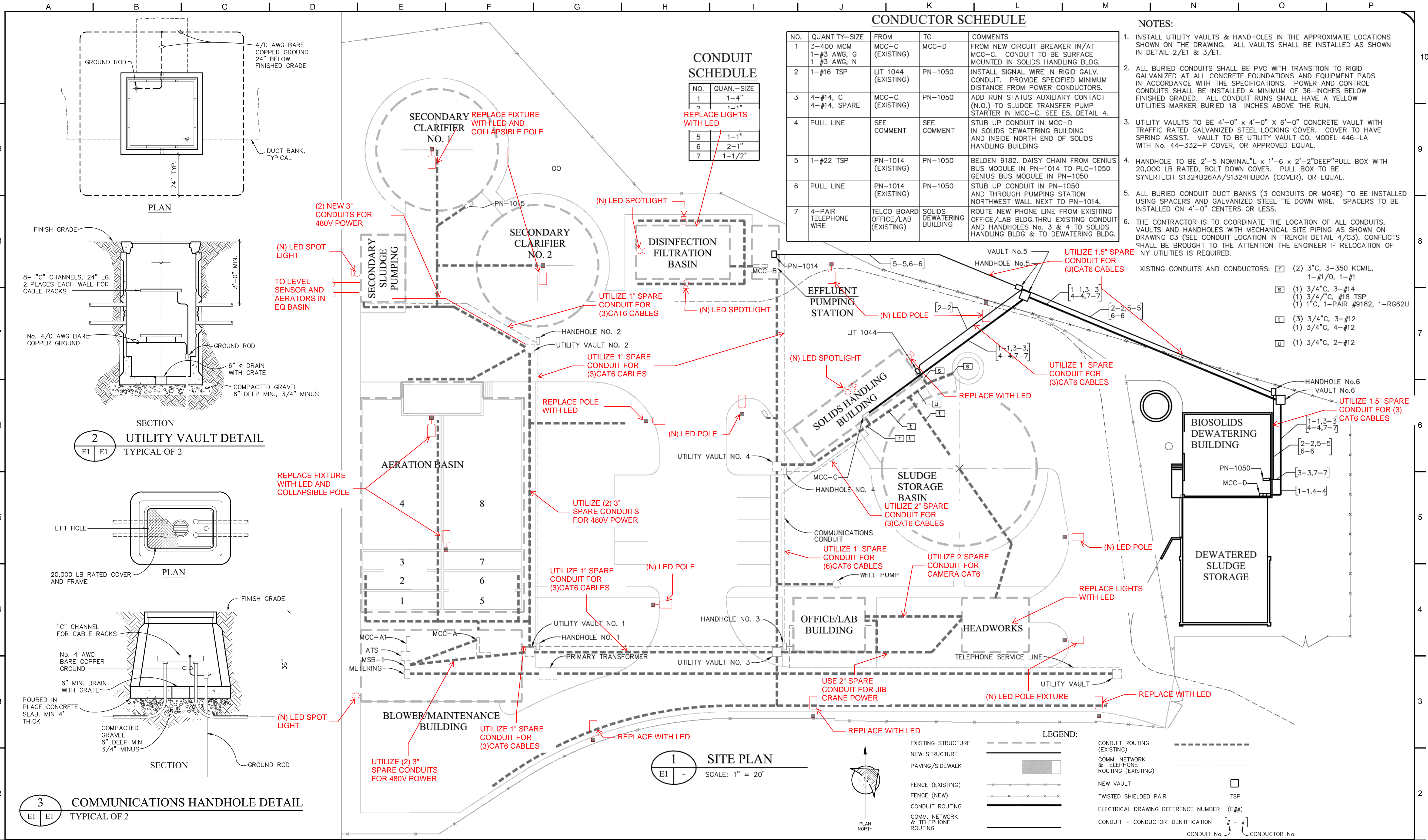
No.	ZONE	REVISIONS	BY	DATE



CITY OF SANDY
WASTE WATER TREATMENT FACILITY
IMPROVEMENTS
EFFLUENT FILTRATION &
DISINFECTION BASIN PLAN

JOB NUMBER 964-50-20-01
DRAWING NUMBER M011
SHEET NUMBER X OF XX
REVISION

P:\Clients\964 City of Sandy\50-20-01 WWTP Cond Assmnt\CAD\Production\964-50-20-01-E001.dwg 2/10/2021 1:15 PM sbarber



CONDUCTOR SCHEDULE

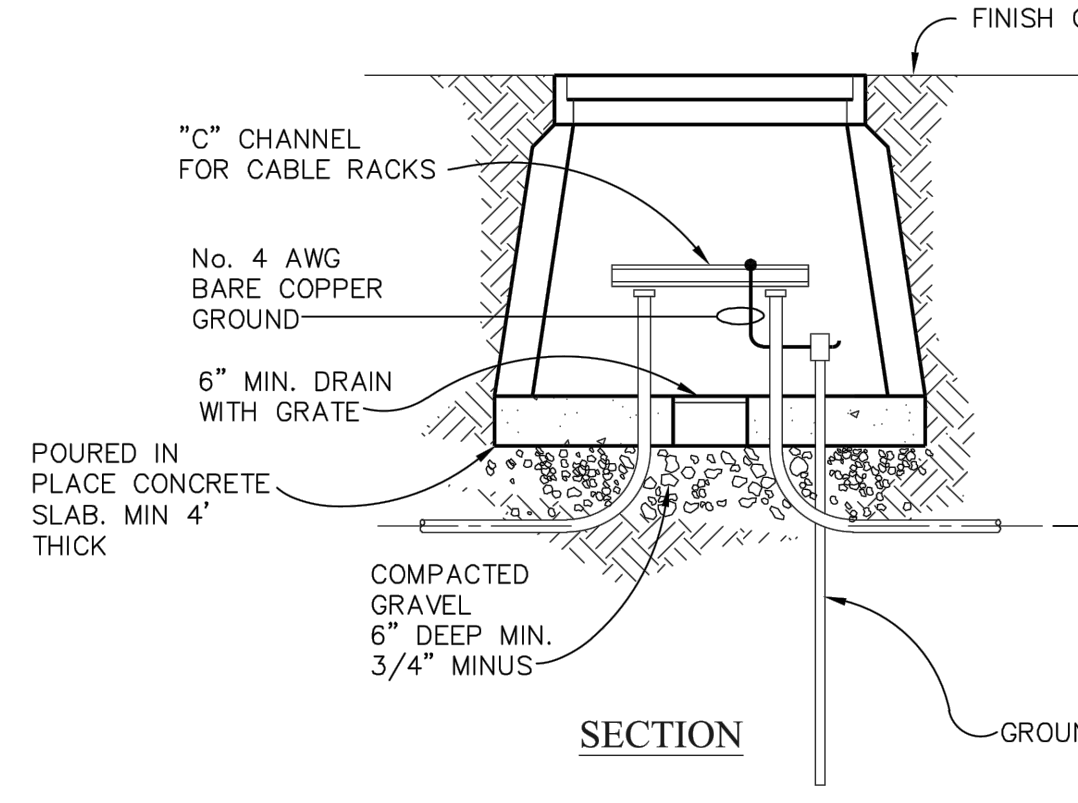
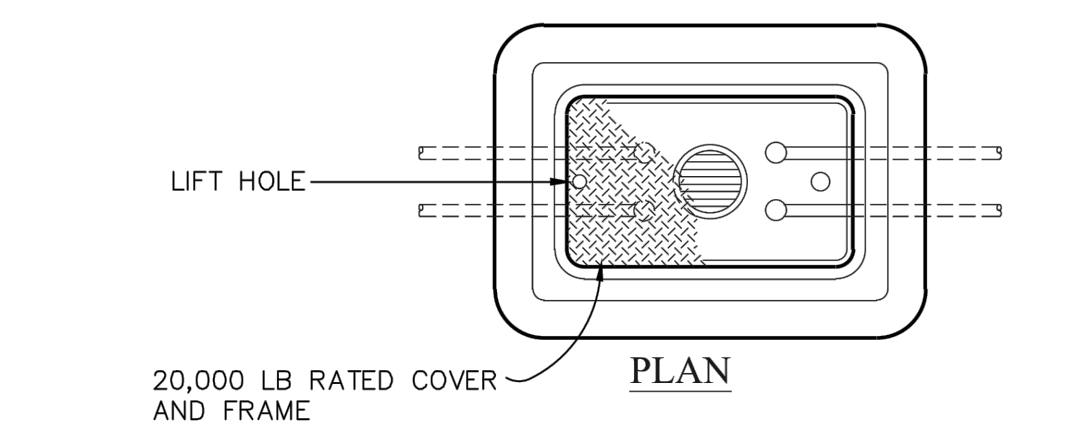
NO.	QUANTITY-SIZE	FROM	TO	COMMENTS
1	3-400 MCM 1-#3 AWG, G 1-#3 AWG, N	MCC-C (EXISTING)	MCC-D	FROM NEW CIRCUIT BREAKER IN/AT MCC-C. CONDUIT TO BE SURFACE MOUNTED IN SOLIDS HANDLING BLDG.
2	1-#16 TSP	LIT 1044 (EXISTING)	PN-1050	INSTALL SIGNAL WIRE IN RIGID GALV. CONDUIT. PROVIDE SPECIFIED MINIMUM DISTANCE FROM POWER CONDUCTORS.
3	4-#14, C 4-#14, SPARE	MCC-C (EXISTING)	PN-1050	ADD RUN STATUS AUXILIARY CONTACT (N.O.) TO SLUDGE TRANSFER PUMP STARTER IN MCC-C. SEE E5, DETAIL 4.
4	PULL LINE	SEE COMMENT	SEE COMMENT	STUB UP CONDUIT IN MCC-D IN SOLIDS DEWATERING BUILDING AND INSIDE NORTH END OF SOLIDS HANDLING BUILDING
5	1-#22 TSP	PN-1014 (EXISTING)	PN-1050	BELDEN 9182. DAISY CHAIN FROM GENIUS BUS MODULE IN PN-1014 TO PLC-1050 GENIUS BUS MODULE IN PN-1050
6	PULL LINE	PN-1014 (EXISTING)	PN-1050	STUB UP CONDUIT IN PN-1050 AND THROUGH PUMPING STATION NORTHWEST WALL NEXT TO PN-1014.
7	4-PAIR TELEPHONE WIRE	TELCO BOARD OFFICE/LAB (EXISTING)	SOLIDS DEWATERING BUILDING	ROUTE NEW PHONE LINE FROM EXISTING OFFICE/LAB BLDG. THRU EXISTING CONDUIT AND HANDHOLES No. 3 & 4 TO SOLIDS HANDLING BLDG & TO DEWATERING BLDG.

- NOTES:**
- INSTALL UTILITY VAULTS & HANDHOLES IN THE APPROXIMATE LOCATIONS SHOWN ON THE DRAWING. ALL VAULTS SHALL BE INSTALLED AS SHOWN IN DETAIL 2/E1 & 3/E1.
 - ALL BURIED CONDUITS SHALL BE PVC WITH TRANSITION TO RIGID GALVANIZED AT ALL CONCRETE FOUNDATIONS AND EQUIPMENT PADS IN ACCORDANCE WITH THE SPECIFICATIONS. POWER AND CONTROL CONDUITS SHALL BE INSTALLED A MINIMUM OF 36-INCHES BELOW FINISHED GRADE. ALL CONDUIT RUNS SHALL HAVE A YELLOW UTILITIES MARKER BURIED 18 INCHES ABOVE THE RUN.
 - UTILITY VAULTS TO BE 4'-0" x 4'-0" x 6'-0" CONCRETE VAULT WITH TRAFFIC RATED GALVANIZED STEEL LOCKING COVER. COVER TO HAVE SPRING ASSIST. VAULT TO BE UTILITY VAULT CO. MODEL 446-LA WITH No. 44-332-P COVER, OR APPROVED EQUAL.
 - HANDHOLE TO BE 2'-5" NOMINAL "L x 1'-6" x 2'-2" DEEP "PULL BOX WITH 20,000 LB RATED, BOLT DOWN COVER. PULL BOX TO BE SYNERTECH S1324B26AA/S1324HB00A (COVER), OR EQUAL.
 - ALL BURIED CONDUIT DUCT BANKS (3 CONDUITS OR MORE) TO BE INSTALLED USING SPACERS AND GALVANIZED STEEL TIE DOWN WIRE. SPACERS TO BE INSTALLED ON 4'-0" CENTERS OR LESS.
 - THE CONTRACTOR IS TO COORDINATE THE LOCATION OF ALL CONDUITS, VAULTS AND HANDHOLES WITH MECHANICAL SITE PIPING AS SHOWN ON DRAWING C3 (SEE CONDUIT LOCATION IN TRENCH DETAIL 4/C3). CONFLICTS SHALL BE BROUGHT TO THE ATTENTION OF THE ENGINEER IF RELOCATION OF NY UTILITIES IS REQUIRED.
- EXISTING CONDUITS AND CONDUCTORS:
- (2) 3"C, 3-350 KCMIL, 1-#1/0, 1-#1
 - (1) 3/4"C, 3-#14
 - (1) 3/4"/C, #18 TSP
 - (1) 1"C, 1-PAIR #9182, 1-RG62U
 - (3) 3/4"C, 3-#12
 - (1) 3/4"C, 4-#12
 - (1) 3/4"C, 2-#12

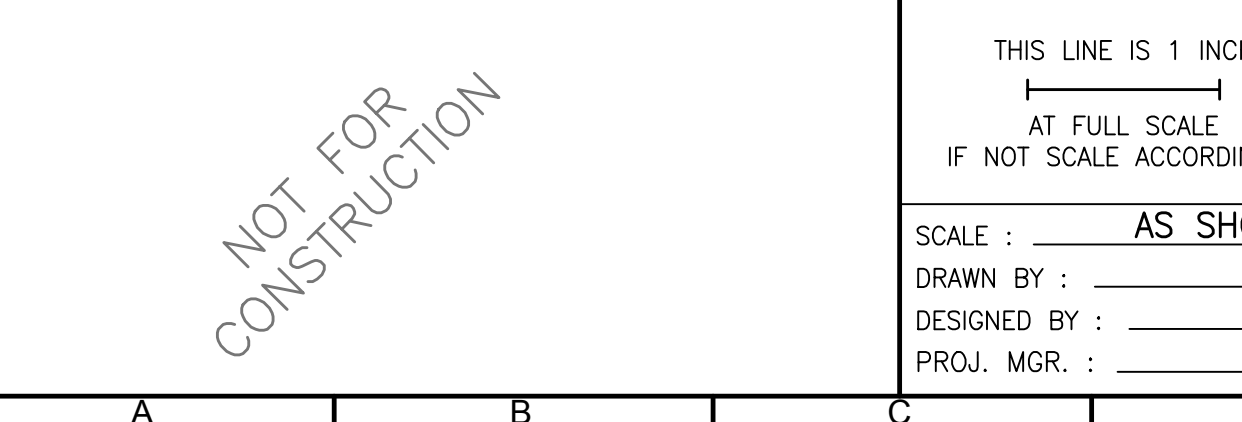
CONDUIT SCHEDULE

NO.	QUAN.	SIZE
1	1	1-4"
2	2	1-1"
5	1	1-1"
6	1	2-1"
7	1	1-1/2"

2 UTILITY VAULT DETAIL
TYPICAL OF 2



3 COMMUNICATIONS HANDHOLE DETAIL
TYPICAL OF 2



1 SITE PLAN
SCALE: 1" = 20'

LEGEND:

EXISTING STRUCTURE	---	CONDUIT ROUTING (EXISTING)	---
NEW STRUCTURE	---	COMM. NETWORK & TELEPHONE ROUTING (EXISTING)	---
PAVING/SIDEWALK	---	NEW VAULT	□
FENCE (EXISTING)	---	TWISTED SHIELDED PAIR	TSP
FENCE (NEW)	---	ELECTRICAL DRAWING REFERENCE NUMBER (E##)	
CONDUIT ROUTING	---	CONDUIT - CONDUCTOR IDENTIFICATION	[# - #]
COMM. NETWORK & TELEPHONE ROUTING	---	CONDUIT No.	
		CONDUCTOR No.	

NOT FOR CONSTRUCTION

THIS LINE IS 1 INCH AT FULL SCALE IF NOT SCALE ACCORDINGLY

SCALE: AS SHOWN

DRAWN BY: SMB
DESIGNED BY: WJS
PROJ. MGR.: PVM

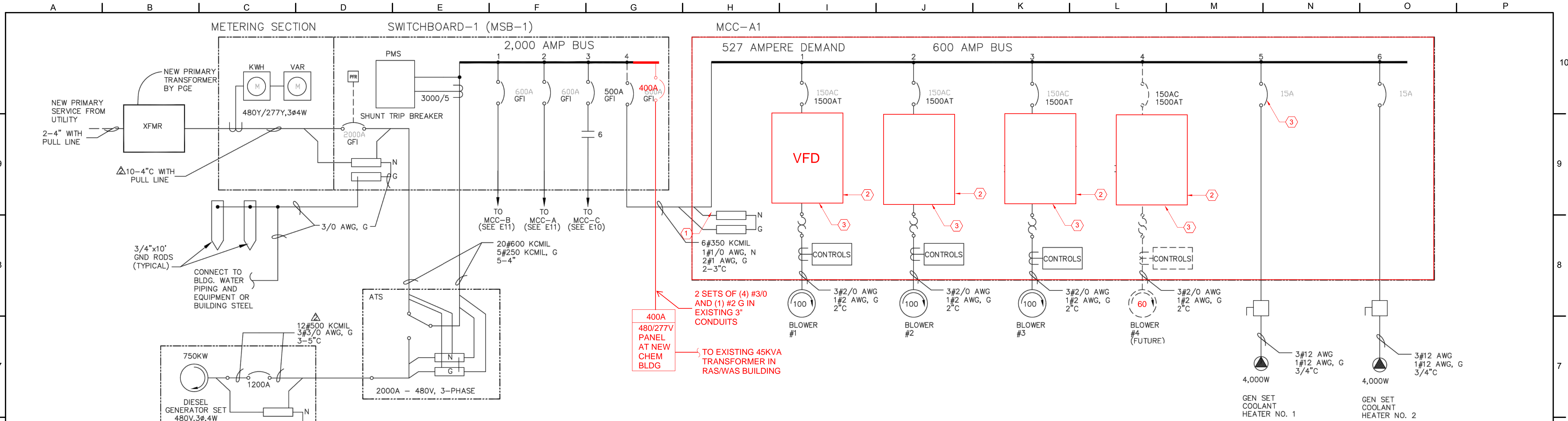
No.	ZONE	REVISIONS	BY	DATE



CITY OF SANDY
WASTE WATER TREATMENT FACILITY IMPROVEMENTS
ELECTRICAL SITE PLAN

JOB NUMBER	964-50-20-01
DRAWING NUMBER	E001
SHEET NUMBER	X OF XX
REVISION	

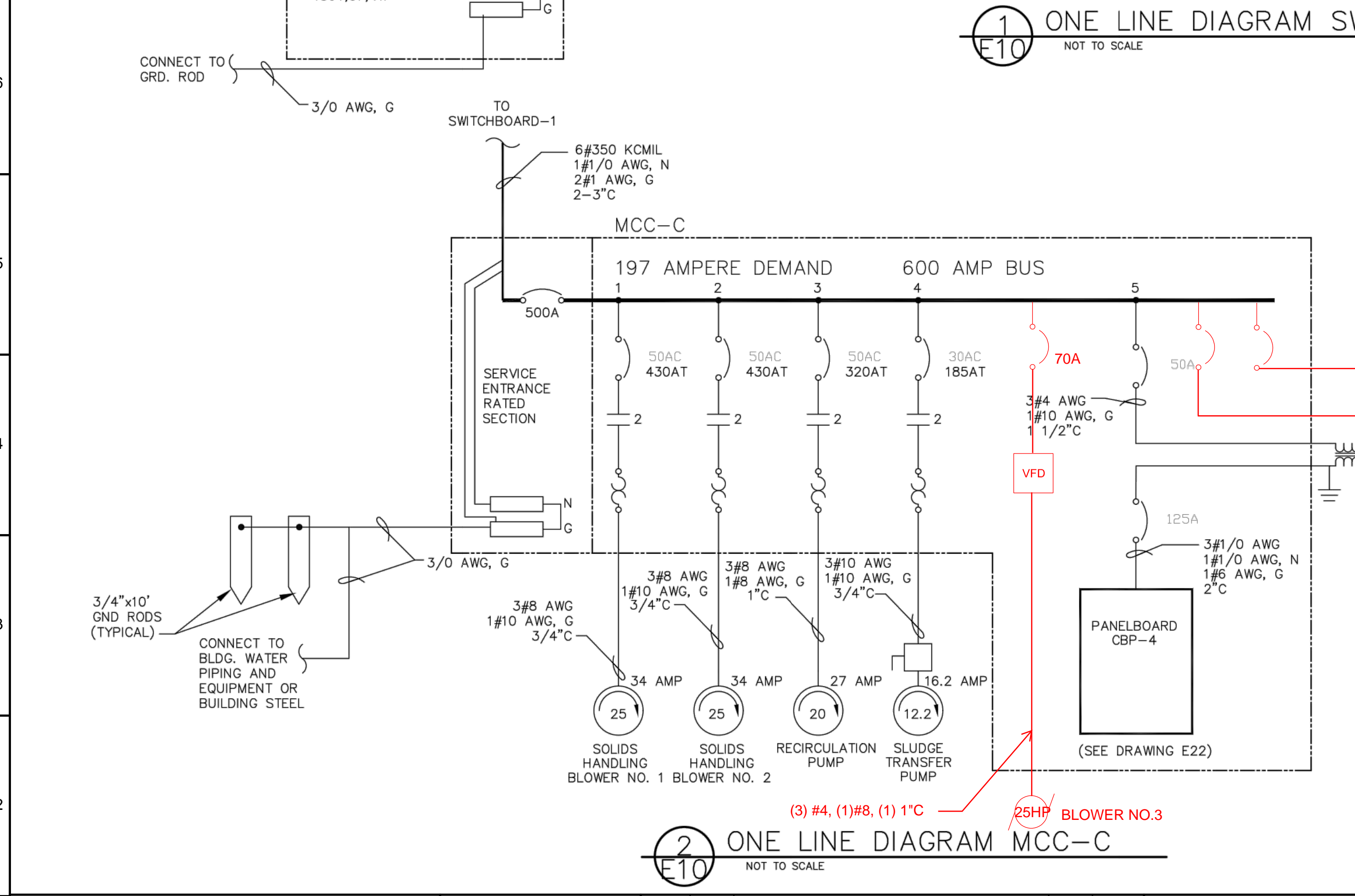
P:\Clients\964 City of Sandy\50-20-01 WWTP Cond Assmnt\CAD\Production\964-50-20-01-E002.dwg 2/10/2021 1:05 PM sbarber



1 ONE LINE DIAGRAM SWITCHBOARD-1 & MCC A1
NOT TO SCALE

	CONNECTED (VA)	DEMAND (VA)	
LIGHTS	9,096	11,370	
RECEPT.	21,960	24,120	
HEATING	50,648	63,310	
EQUIP.	19,150	22,562	
MOTORS	833,041	878,593	
MISC.	5,600	10,515	
SUBTOTAL	939,495	1,207,202	1,453A @ 480V, 3-PHASE
FUTURE	199,094	199,094	
TOTAL	1,139,389	1,406,206	1,723A @ 480V, 3-PHASE (FUTURE)

- KEYED NOTES**
- EXISTING MCC-A1 TO BE REMOVED. INSTALL NEW MCC WITH DRIVES SHOWN. DISCONNECT EXISTING CONDUCTORS FOR REMOVAL OF MCC. REINSTALL CONDUCTORS AFTER NEW MCC HAS BEEN SECURED.
 - NEW VFD DRIVE INSTALLED IN NEW MCC.
 - DISCONNECT EXISTING CONDUCTORS FOR REMOVAL OF MCC. RECONNECT CONDUCTORS AFTER VFD AND/OR CIRCUIT BREAKER HAS BEEN INSTALLED.
- INDICATES EQUIPMENT TO BE PROVIDED AT A FUTURE DATE. PROVIDE SPACE ONLY IN MCC FOR ADDITION OF MOTOR CONTROL EQUIPMENT. SPACES TO BE LOCATED FOR RESPECTIVE EQUIPMENT AS SHOWN ON DRAWING E12.



2 ONE LINE DIAGRAM MCC-C
NOT TO SCALE

TO STORMWATER PUMP CONTROL PANEL
TO STORMWATER PUMP CONTROL PANEL

LEGEND

	MOTOR, HORSEPOWER SHOWN		TRANSFORMER
	MAGNETIC ONLY CIRCUIT BREAKER CONTINUOUS CURRENT SHOWN		MOTOR THERMAL OVERLOAD RELAY
	THERMAL MAGNETIC CIRCUIT BREAKER		FUSE, AMPERE RATING SHOWN
	MOTOR STARTER CONTACTOR NEMA SIZE RATING SHOWN		CURRENT TRANSFORMER
			SAFETY DISCONNECT SWITCH

AM	AMMETER
GFI	GROUND FAULT INTERRUPT
SW	SWITCH
VM	VOLTMETER
VFD	VARIABLE FREQUENCY DRIVE
M	METER
G	GROUND
C	CONDUIT
PFR	PHASE FAILURE RELAY
PMS	POWER MONITORING SYSTEM

NOT FOR CONSTRUCTION

THIS LINE IS 1 INCH AT FULL SCALE IF NOT SCALE ACCORDINGLY

SCALE : AS SHOWN

DRAWN BY : SMB

DESIGNED BY : WJS

PROJ. MGR. : PVM

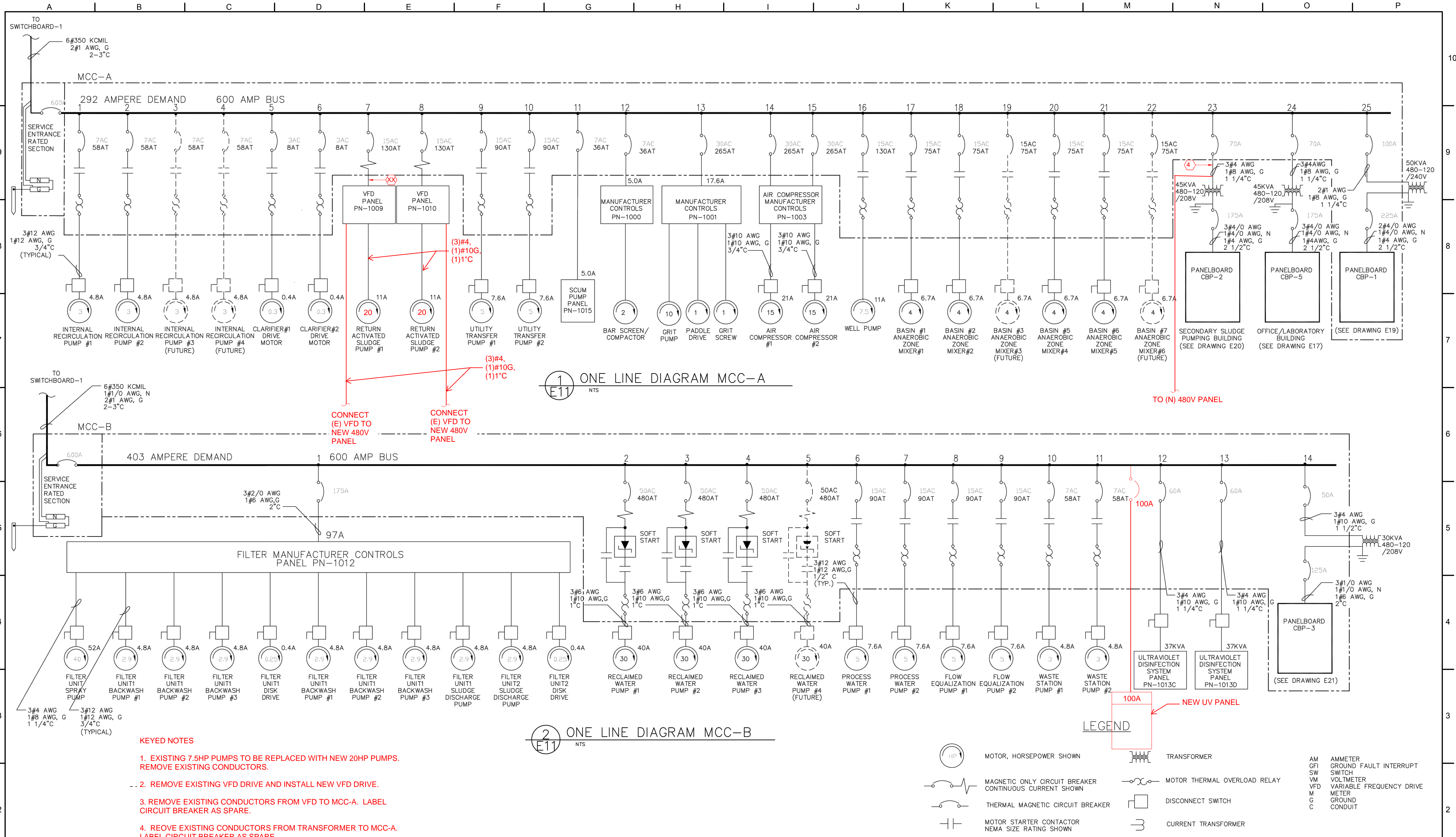
No.	ZONE	REVISIONS	BY	DATE



CITY OF SANDY
WASTE WATER TREATMENT FACILITY
IMPROVEMENTS
480 VOLT, 3-PHASE
ONE LINE DIAGRAM

JOB NUMBER	964-50-20-01
DRAWING NUMBER	E002
SHEET NUMBER	X OF XX
REVISION	

P:\Clients\964 City of Sandy\50-20-01 WTP Cond Assmnt\CAD\Production\964-50-20-01-E003.dwg 2/10/2021 1:37 PM sbarber



- KEYED NOTES**
- EXISTING 7.5HP PUMPS TO BE REPLACED WITH NEW 20HP PUMPS. REMOVE EXISTING CONDUCTORS.
 - REMOVE EXISTING VFD DRIVE AND INSTALL NEW VFD DRIVE.
 - REMOVE EXISTING CONDUCTORS FROM VFD TO MCC-A. LABEL CIRCUIT BREAKER AS SPARE.
 - REMOVE EXISTING CONDUCTORS FROM TRANSFORMER TO MCC-A. LABEL CIRCUIT BREAKER AS SPARE.

AS CONSTRUCTED SEPTEMBER 1998

NOT FOR CONSTRUCTION

THIS LINE IS 1 INCH AT FULL SCALE IF NOT SCALE ACCORDINGLY

SCALE: AS SHOWN

DRAWN BY: SMB

DESIGNED BY: WJS

PROJ. MGR.: PVM

No.	ZONE	REVISIONS	BY	DATE



CITY OF SANDY
WASTE WATER TREATMENT FACILITY
IMPROVEMENTS
480 VOLT, 3-PHASE
ONE LINE DIAGRAM

JOB NUMBER 964-50-20-01
DRAWING NUMBER E003
SHEET NUMBER X OF XX
REVISION