

Path: G:\Projects\150.22.Sandy B6-7 Rehab Design\Sandy B6-7 Design.aprx Produced by: YMM Date: 4/10/2022 1:15 AM



Collection System  
I/I Reduction  
Basins 6 and 7

Sheet C22 Page 25 of 37

30% Design

When printed on 11 x 17  
1 inch equals 60 feet

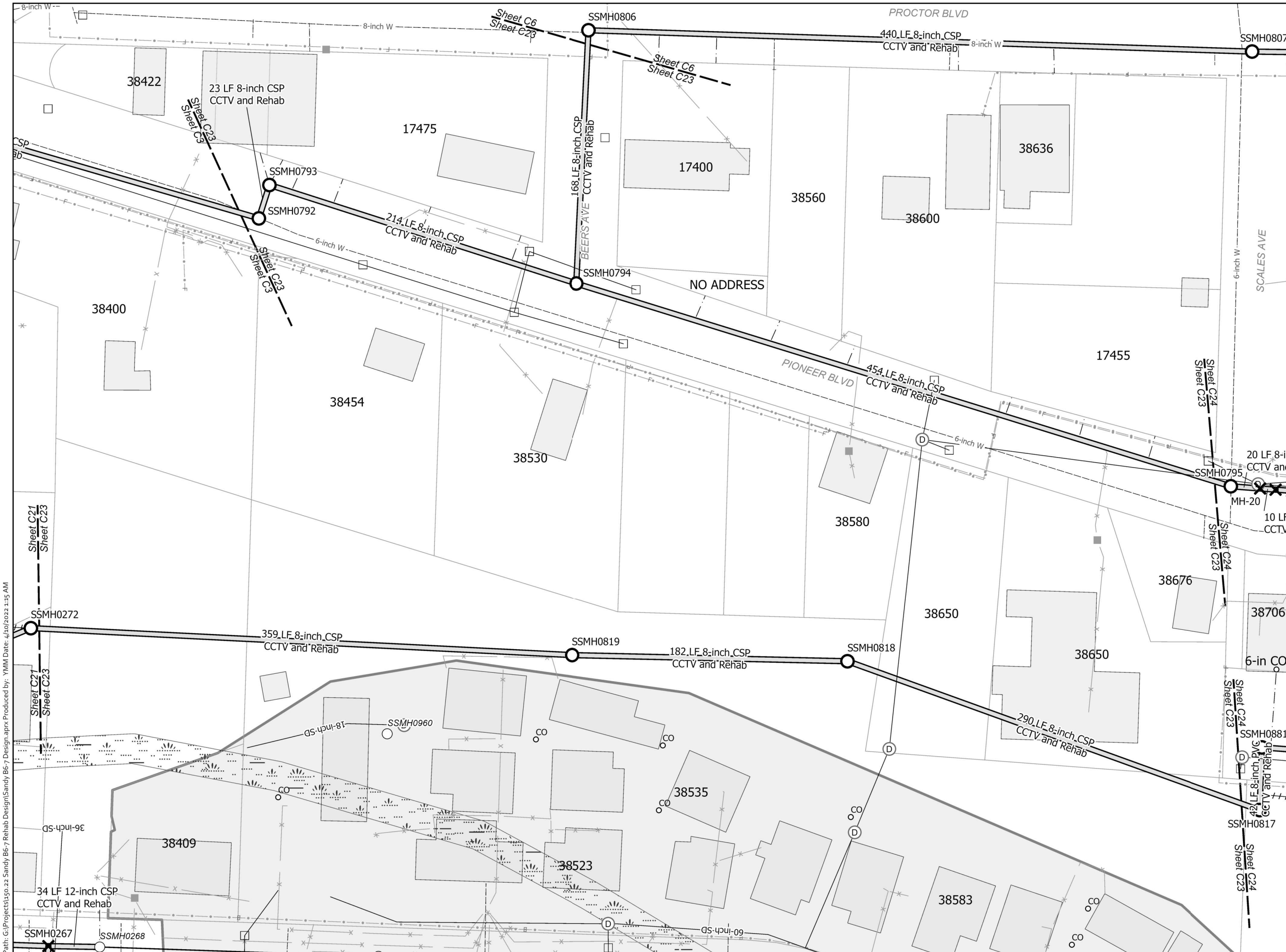
0 15 30 60  
US Feet

This map published for the City of Sandy, Oregon by Leeway Engineering Solutions on 4/10/2022. Disclaimer: This map product displays data from multiple sources and it is for informational purposes only. The accuracy of this drawing is not guaranteed for legal purposes. Locations of sewer pipelines and other utilities are to be verified by the user.

**DRAFT**

4/8/2022





Collection System  
I/I Reduction  
Basins 6 and 7

Sheet C23 Page 26 of 37

30% Design

When printed on 11 x 17  
1 inch equals 60 feet

US Feet

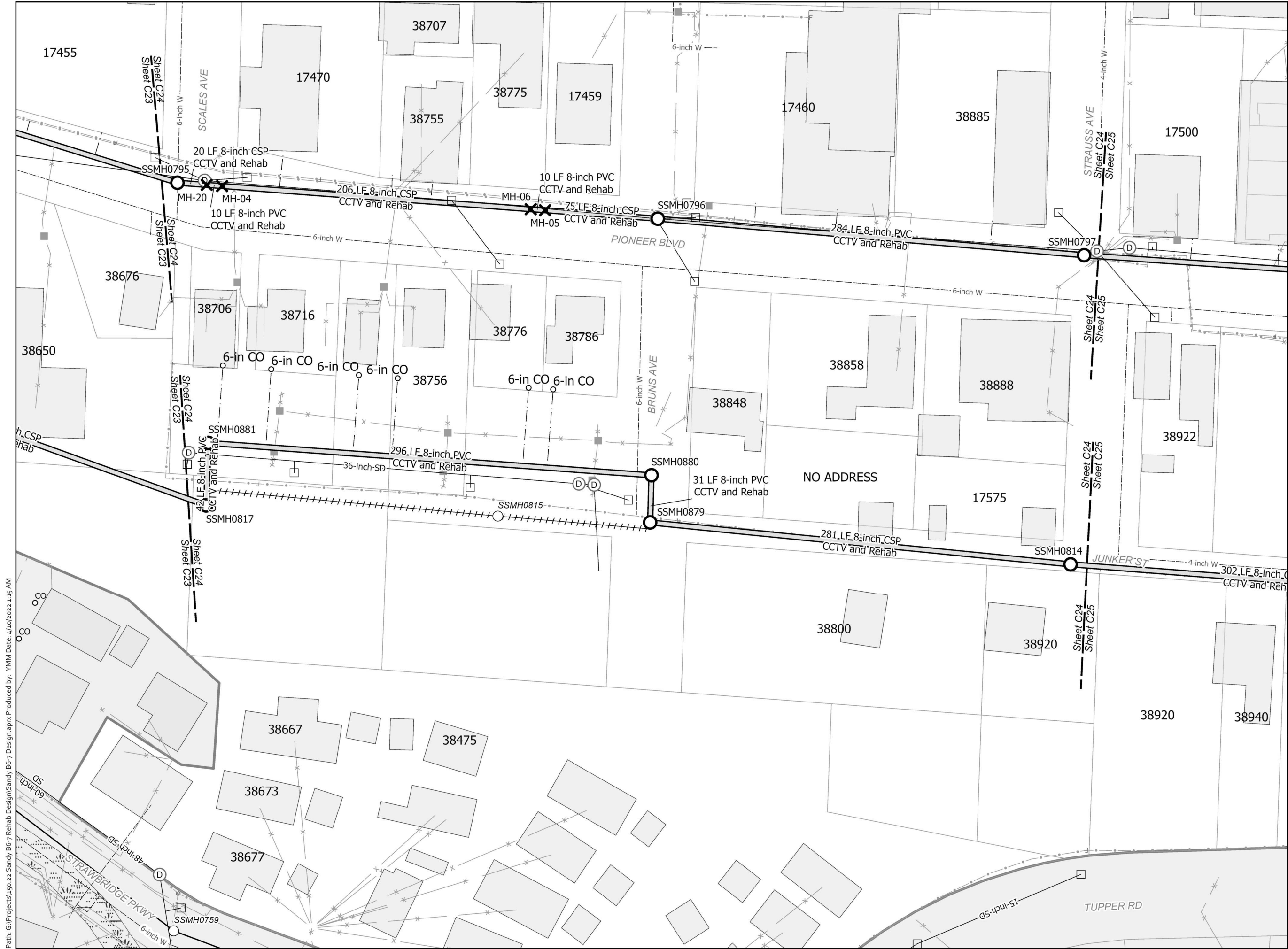
This map published for the City of Sandy, Oregon by Leeway Engineering Solutions on 4/20/2022. Disclaimer: This map product displays data from multiple sources and it is for informational purposes only. The accuracy of this drawing is not guaranteed for legal purposes. Locations of sewer pipelines and other utilities are to be verified by the user.

**DRAFT**

4/8/2022

Path: G:\Projects\150.22 Sandy B6-7 Rehab Design\Sandy B6-7 Design.aprx Produced by: YMM Date: 4/10/2022 1:15 AM



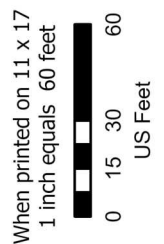


Path: G:\Projects\150\_22\_Sandy B6-7 Rehab Design\Sandy B6-7 Design.aprx Produced by: YMM Date: 4/10/2022 1:15 AM

Collection System  
I/I Reduction

Basins 6 and 7

30% Design



This map published for the City of Sandy, Oregon by Leeway Engineering Solutions on 4/20/2022. Disclaimer: This map product displays data from multiple sources and it is for informational purposes only. The accuracy of this drawing is not guaranteed for legal purposes. Locations of sewer pipelines and other utilities are to be verified by the user.

DRAFT

4/8/2022



Path: G:\Projects\150.22 Sandy B6-7 Rehab Design\Sandy B6-7 Design.aprx Produced by: YMM Date: 4/10/2022 1:15 AM



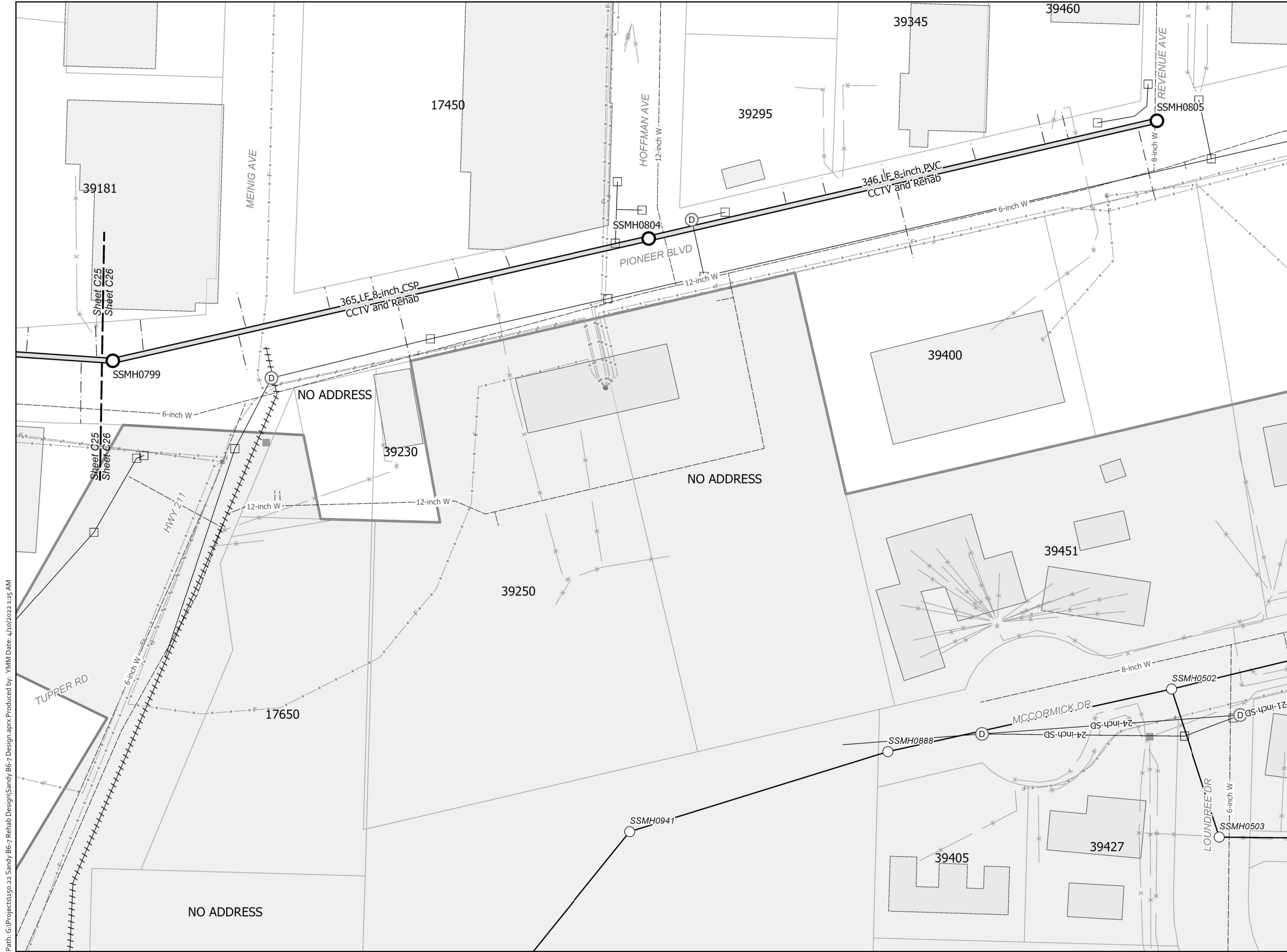
30% Design

When printed on 11 x 17  
1 inch equals 60 feet

US Feet

This map published for the City of Sandy, Oregon by LeeWAY Engineering Solutions on 4/10/2022. Disclaimer: This map product displays data from multiple sources and it is for informational purposes only. The accuracy of this drawing is not guaranteed for legal purposes. Locations of sewer pipelines and other utilities are to be verified by the user.





Path: G:\Projects\150.24 Sandy B6-7 Rehab Design\Sandy B6-7 Design.aprx Produced by: YMM Date: 4/10/2022 1:15 AM

Collection System  
I/I Reduction  
Basins 6 and 7

Sheet C26 Page 29 of 37

30% Design

When printed on 11 x 17  
1 inch equals 60 feet

US Feet

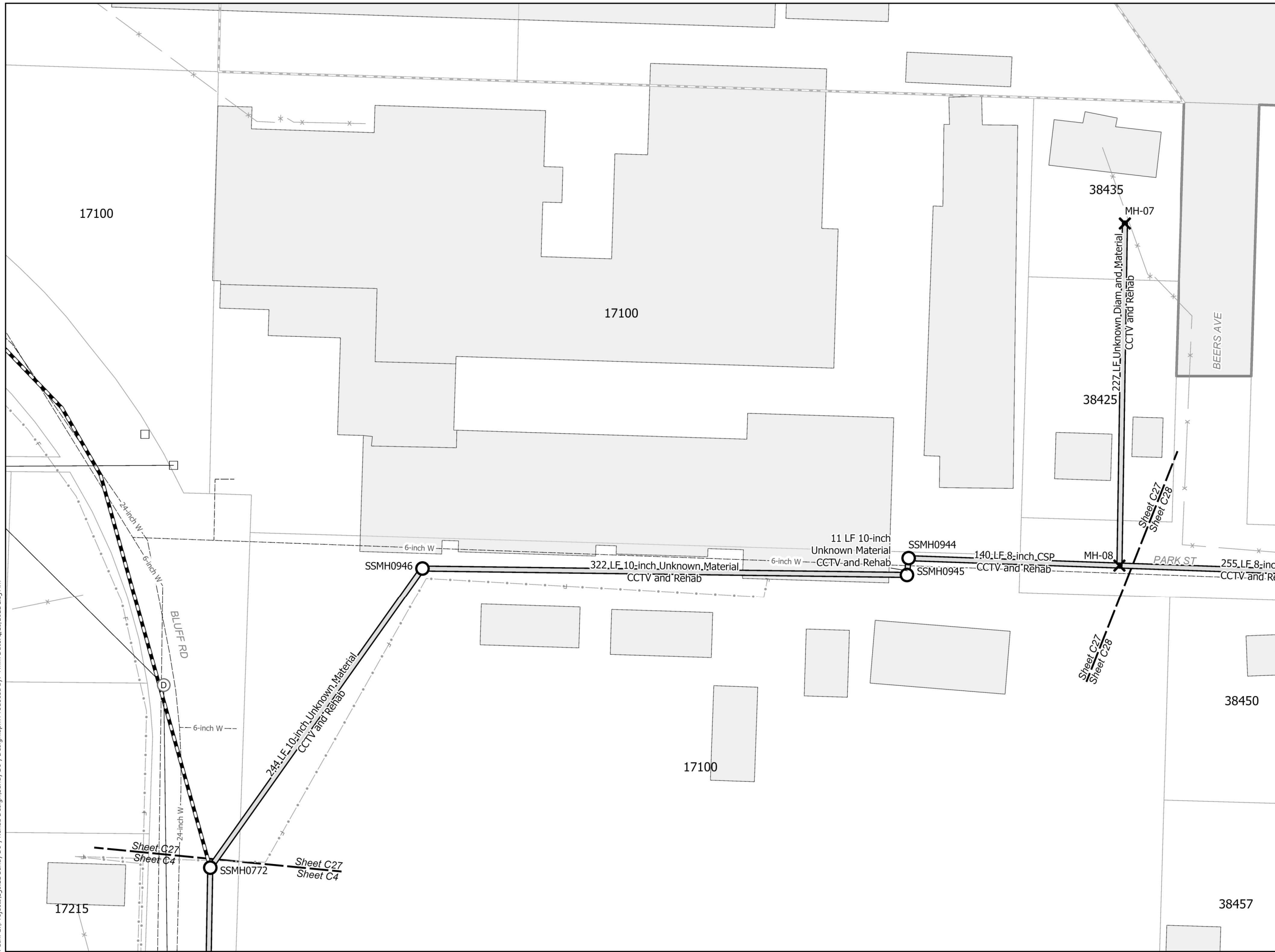
This map published for the City of Sandy, Oregon by LeeWAY Engineering Solutions on 4/10/2022. Disclaimer: This map product displays data from multiple sources and it is for informational purposes only. The accuracy of this drawing is not guaranteed for legal purposes. Locations of sewer pipelines and other utilities are to be verified by the user.

**DRAFT**

4/8/2022



Path: G:\Projects\150.22.Sandy B6-7 Rehab Design\Sandy B6-7 Design.aprx Produced by: YMM Date: 4/10/2022 1:15 AM



Collection System  
I/I Reduction  
Basins 6 and 7

Sheet C27 Page 30 of 37

30% Design

When printed on 11 x 17  
1 inch equals 60 feet

US Feet

This map published for the City of Sandy, Oregon by Leeway Engineering Solutions on 4/10/2022. Disclaimer: This map product displays data from multiple sources and it is for informational purposes only. The accuracy of this drawing is not guaranteed for legal purposes. Locations of sewer pipelines and other utilities are to be verified by the user.

**DRAFT**

4/8/2022



Path: G:\Projects\150.22 Sandy B6-7 Rehab Design\Sandy B6-7 Design.aprx Produced by: YMM Date: 4/10/2022 1:15 AM



30% Design

When printed on 11 x 17  
1 inch equals 60 feet

LEEWAY  
engineering solutions

This map published for the City of Sandy, Oregon by Leeway Engineering Solutions on 4/10/2022. Disclaimer: This map product displays data from multiple sources and it is for informational purposes only. The accuracy of this drawing is not guaranteed for legal purposes. Locations of sewer pipelines and other utilities are to be verified by the user.

**DRAFT**

4/8/2022





Path: G:\Projects\150.22\_Sandy\B6-7\_Rehab\_Design\Sandy\_B6-7\_Design.aprx Produced by: YMM Date: 4/10/2022 1:15 AM

Collection System  
I/I Reduction

Basins 6 and 7

30% Design

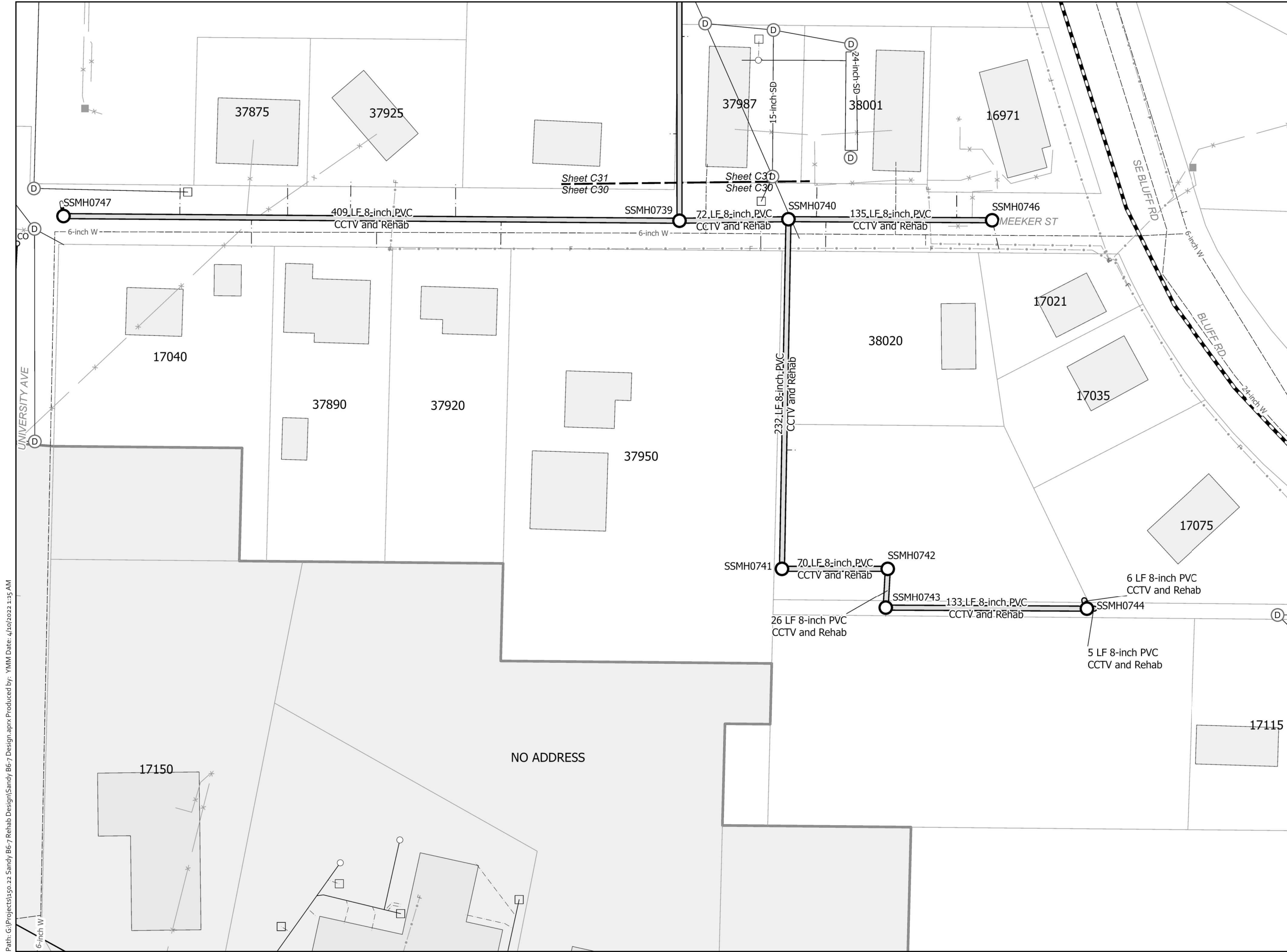
When printed on 11 x 17  
1 inch equals 60 feet



This map published for the City of Sandy, Oregon by Leeway Engineering Solutions on 4/10/2022. Disclaimer: This map product displays data from multiple sources and it is for informational purposes only. The accuracy of this drawing is not guaranteed for legal purposes. Locations of sewer pipelines and other utilities are to be verified by the user.

DRAFT

4/8/2022



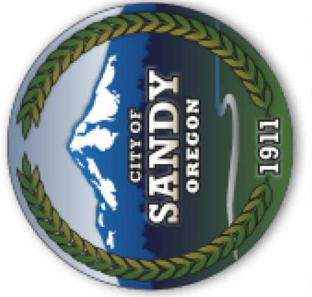
Path: G:\Projects\150.22 Sandy B6-7 Rehab Design\Sandy B6-7 Design.aprx Produced by: YMM Date: 4/10/2022 1:15 AM

**Collection System  
I/I Reduction**

**Basins 6 and 7**

**30% Design**

When printed on 11 x 17  
1 inch equals 60 feet  
0 15 30 60  
US Feet

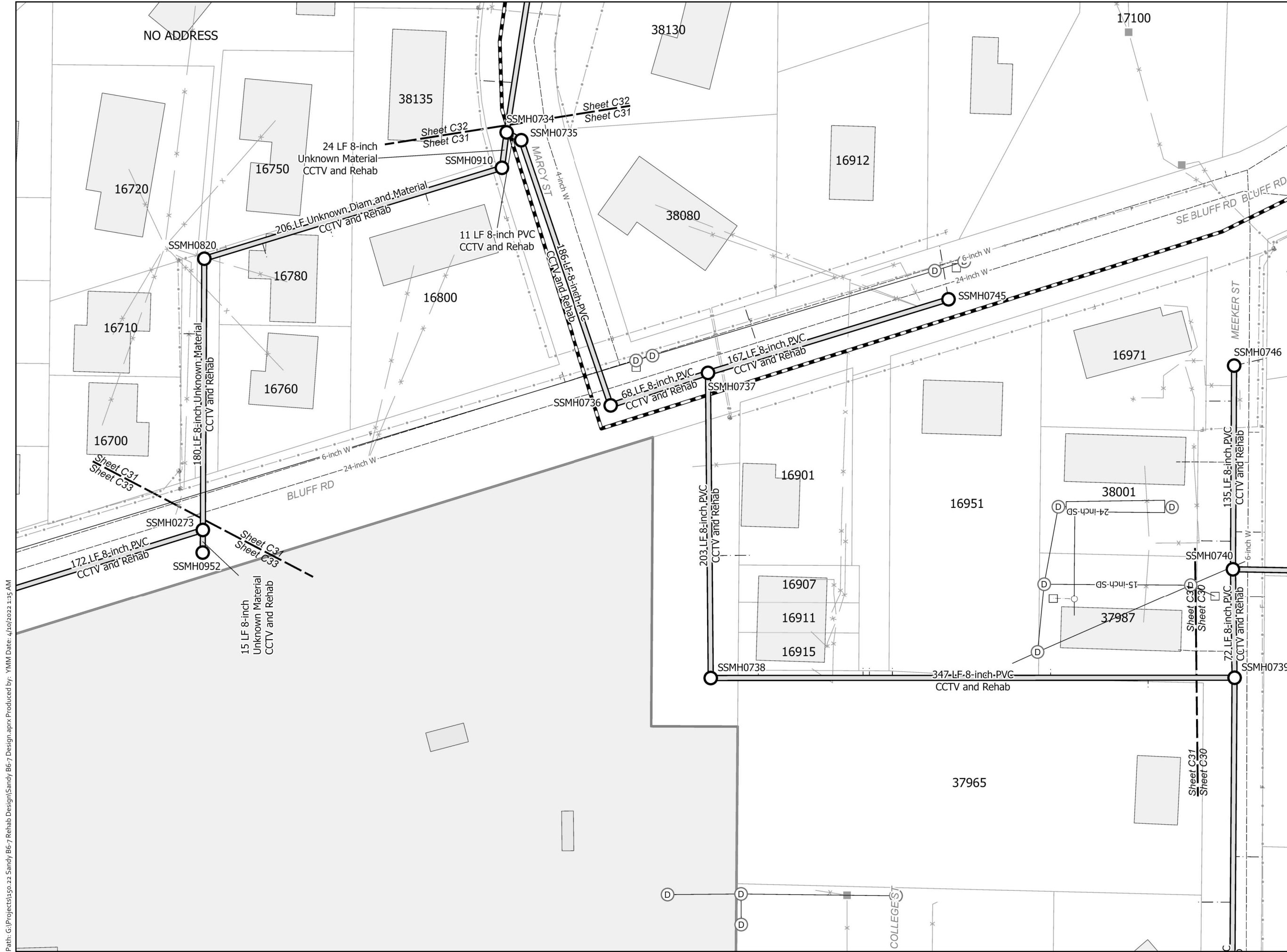


This map published for the City of Sandy, Oregon by Leeway Engineering Solutions on 4/10/2022. Disclaimer: This map product displays data from multiple sources and it is for informational purposes only. The accuracy of this drawing is not guaranteed for legal purposes. Locations of sewer pipelines and other utilities are to be verified by the user.

**DRAFT**

4/8/2022





Path: G:\Projects\150.22.Sandy B6-7 Rehab Design\Sandy B6-7 Design.aprx Produced by: YMM Date: 4/10/2022 1:15 AM

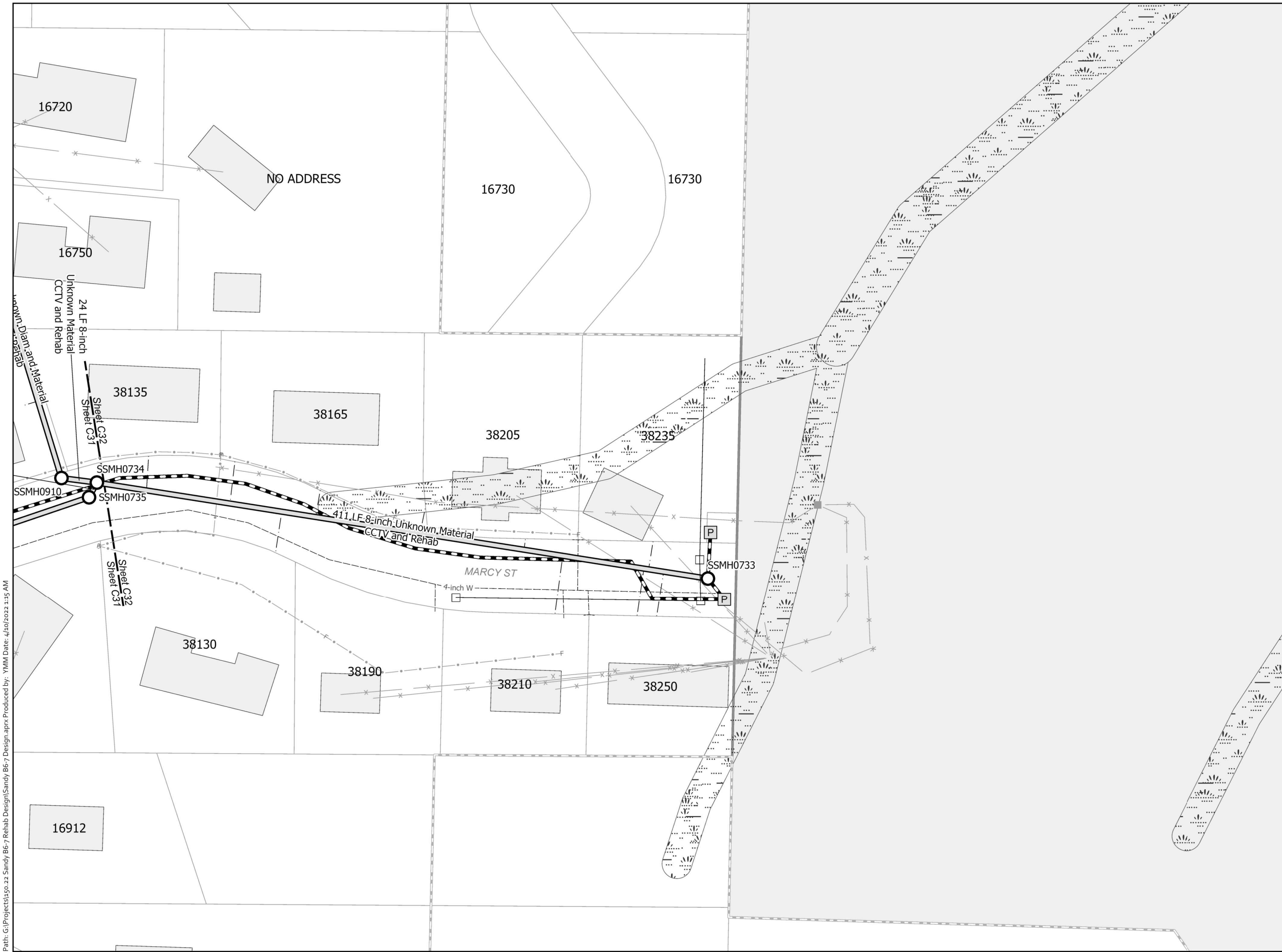
**30% Design**

When printed on 11 x 17  
1 inch equals 60 feet

US Feet

This map published for the City of Sandy, Oregon by LeeWAY Engineering Solutions on 4/10/2022. Disclaimer: This map product displays data from multiple sources and it is for informational purposes only. The accuracy of this drawing is not guaranteed for legal purposes. Locations of sewer pipelines and other utilities are to be verified by the user.

**DRAFT**  
4/8/2022



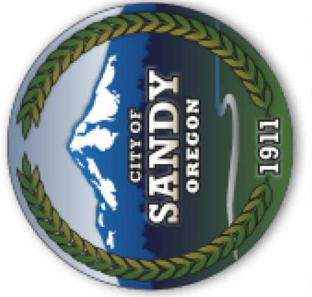
Path: G:\Projects\150.22 Sandy B6-7 Rehab Design\Sandy B6-7 Design.aprx Produced by: YMM Date: 4/10/2022 1:15 AM

Collection System  
I/I Reduction

Basins 6 and 7

Sheet C32 Page 35 of 37

30% Design



This map published for the City of Sandy, Oregon by Leeway Engineering Solutions on 4/10/2022. Disclaimer: This map product displays data from multiple sources and it is for informational purposes only. The accuracy of this drawing is not guaranteed for legal purposes. Locations of sewer pipelines and other utilities are to be verified by the user.

DRAFT

4/8/2022





Path: G:\Projects\150.22.Sandy B6-7 Rehab Design\Sandy B6-7 Design.aprx Produced by: YMM Date: 4/10/2022 1:15 AM

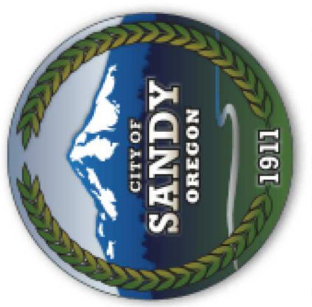
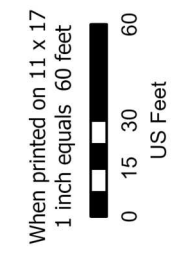


Collection System  
I/I Reduction

Basins 6 and 7

Sheet C34 Page 37 of 37

30% Design



This map published for the City of Sandy, Oregon by Leeway Engineering Solutions on 4/20/2022. Disclaimer: This map product displays data from multiple sources and it is for informational purposes only. The accuracy of this drawing is not guaranteed for legal purposes. Locations of sewer pipelines and other utilities are to be verified by the user.

DRAFT

4/8/2022



# **ATTACHMENT B**

## **City of Sandy, Oregon CONSTRUCTION MANAGER/GENERAL CONTRACTOR GENERAL CONDITIONS**

# CM/GC GENERAL CONDITIONS

## TABLE OF SECTIONS

### SECTION A GENERAL PROVISIONS

- A.1 DEFINITION OF TERMS
- A.2 SCOPE OF WORK
- A.3 INTERPRETATION OF CONTRACT DOCUMENTS
- A.4 EXAMINATION OF PLANS, SPECIFICATIONS, AND SITE
- A.5 INDEPENDENT CONTRACTOR STATUS
- A.6 RETIREMENT SYSTEM STATUS AND TAXES
- A.7 GOVERNMENT EMPLOYMENT STATUS

### SECTION B ADMINISTRATION OF THE CONTRACT

- B.1 CITY'S ADMINISTRATION OF THE CONTRACT
- B.2 CM/GC'S MEANS AND METHODS
- B.3 MATERIALS AND WORKMANSHIP
- B.4 PERMITS
- B.5 COMPLIANCE WITH GOVERNMENT LAWS AND REGULATIONS
- B.6 SUPERINTENDENCE
- B.7 INSPECTION
- B.8 SEVERABILITY
- B.9 ACCESS TO RECORDS
- B.10 WAIVER
- B.11 SUBCONTRACTS AND ASSIGNMENT
- B.12 SUCCESSORS IN INTEREST
- B.13 CITY'S RIGHT TO DO WORK
- B.14 OTHER CONTRACTS
- B.15 GOVERNING LAW
- B.16 LITIGATION
- B.17 ALLOWANCES
- B.18 SUBMITTALS, SHOP DRAWINGS, PRODUCT DATA AND SAMPLES
- B.19 SUBSTITUTIONS
- B.20 USE OF PLANS AND SPECIFICATIONS
- B.21 FUNDS AVAILABLE AND AUTHORIZED
- B.22 NO THIRD PARTY BENEFICIARIES

### SECTION C WAGES AND LABOR

- C.1 MINIMUM WAGES RATES ON PUBLIC WORKS
- C.2 PAYROLL CERTIFICATION; ADDITIONAL RETAINAGE; FEE REQUIREMENTS
- C.3 PROMPT PAYMENT AND CONTRACT CONDITIONS
- C.4 PAYMENT FOR MEDICAL CARE
- C.5 HOURS OF LABOR

### SECTION D CHANGES IN THE WORK

- D.1 CHANGES IN THE WORK
- D.2 DELAYS
- D.3 CLAIMS REVIEW PROCESS

### SECTION E PAYMENTS

- E.1 SCHEDULE OF VALUES
- E.2 APPLICATIONS FOR PAYMENT
- E.3 PAYROLL CERTIFICATION REQUIREMENT
- E.4 DUAL PAYMENT SOURCES
- E.5 RETAINAGE
- E.6 FINAL PAYMENT

### SECTION F JOB SITE CONDITIONS

- F.1 USE OF PREMISES
- F.2 PROTECTION OF WORKERS, PROPERTY AND THE PUBLIC
- F.3 CUTTING AND PATCHING
- F.4 CLEANING UP
- F.5 ENVIRONMENTAL CONTAMINATION
- F.6 ENVIRONMENTAL CLEAN-UP
- F.7 FORCE MAJEURE

### SECTION G INDEMNITY, BONDING AND INSURANCE

- G.1 RESPONSIBILITY FOR DAMAGES/INDEMNITY
- G.2 PERFORMANCE AND PAYMENT SECURITY; PUBLIC WORKS BOND
- G.3 INSURANCE

### SECTION H SCHEDULE OF WORK

- H.1 CONTRACT PERIOD
- H.2 SCHEDULE
- H.3 PARTIAL OCCUPANCY OR USE
- H.4 BENEFICIAL OCCUPANCY OR USE

### SECTION I CORRECTION OF WORK

- I.1 CORRECTIONS OF WORK BEFORE FINAL PAYMENT
- I.2 WARRANTY WORK

### SECTION J SUSPENSION AND/OR TERMINATION OF THE WORK

- J.1 CITY'S RIGHT TO SUSPEND THE WORK
- J.2 CM/GC'S RESPONSIBILITIES
- J.3 COMPENSATION FOR SUSPENSION
- J.4 CITY'S RIGHT TO TERMINATE CONTRACT
- J.5 TERMINATION FOR CONVENIENCE
- J.6 ACTION UPON TERMINATION

### SECTION K CONTRACT CLOSE-OUT

- K.1 RECORD DOCUMENTS
- K.2 OPERATION AND MAINTENANCE MANUALS
- K.3 AFFIDAVIT/RELEASE OF LIENS AND CLAIMS
- K.4 COMPLETION NOTICES
- K.5 TRAINING
- K.6 EXTRA MATERIALS
- K.7 ENVIRONMENTAL CLEAN-UP
- K.8 CERTIFICATE OF OCCUPANCY
- K.9 OTHER CM/GC RESPONSIBILITIES
- K.10 SURVIVAL

### SECTION L LEGAL RELATIONS AND RESPONSIBILITY TO THE PUBLIC

- L.1 LAWS TO BE OBSERVED



# CM/GC GENERAL CONDITIONS

## SECTION A GENERAL PROVISIONS

### A.1 DEFINITION OF TERMS

In the Contract Documents the following terms shall be as defined below:

**ARCHITECT/ENGINEER**, means the Person appointed by the City to make drawings and specifications and, to provide contract administration of the Work contemplated by the Contract to the extent provided herein or by supplemental instruction of City (under which City may delegate responsibilities of the City's Authorized Representative to the Architect/Engineer).

**BENEFICIAL OCCUPANCY**, means the point in time where the City will occupy a portion of the work for its intended use as defined by Substantial Completion, but prior to the Substantial Completion of the entirety of the Work (as in Phased Project completion).

**CHANGE ORDER**, means a written order issued by the City's Authorized Representative to the CM/GC requiring a change in the Work within the general scope of the Contract Documents, issued under the changes provisions of Section D.1 in administering the Contract, including City's written change directives as well as changes reflected in a writing executed by the parties to this Contract and, if applicable, establishing a Contract Price or Contract Time adjustment for the changed Work.

**CLAIM**, means a demand by CM/GC pursuant to Section D.3 for review of the denial of CM/GC's initial request for an adjustment of Contract terms, payment of money, extension of Contract Time or other relief, submitted in accordance with the requirements and within the time limits established for review of Claims in these General Conditions.

**CONTRACT**, means the written agreement between the City and the CM/GC comprised of the Contract Documents which describe the Work to be done and the obligations between the parties.

**CONTRACT DOCUMENTS**, means the Solicitation Document and addenda thereto, the City of Sandy CMGC Contract form, CM/GC General Conditions, Supplemental General Conditions, if any, the accepted Offer, Plans, Specifications, amendments and Change Orders.

**CONTRACT PERIOD**, as set forth in the Contract Documents, means the total period of time beginning with the issuance of the Notice to Proceed and concluding upon Final Completion.

**CONTRACT PRICE**, means the total of the awarded Offer amount, as increased or decreased by the price of approved alternates and Change Orders.

**CONTRACT TIME**, means any incremental period of time allowed under the Contract to complete any portion of the Work as reflected in the project schedule.

**CM/GC**, CM/GC means the Person awarded the Contract for the Work contemplated and is the same Person identified and referred to in the in the CM/GC Contract as the 'CM/GC'. May also be referred to as "Contractor" in the Contract Documents.

**DAYS**, are calendar days, including weekdays, weekends and holidays, unless otherwise specified.

**DIRECT COSTS**, means, unless otherwise provided in the Contract Documents, the cost of materials, including sales tax, cost of delivery; cost of labor, including social security, old age and unemployment insurance, and fringe benefits required by agreement or custom; worker's compensation insurance; project specific insurance; bond premiums, rental cost of equipment, and machinery required for execution of the work; and the additional costs of field personnel directly attributable to the Work.

**CITY**, means the City of Sandy, Oregon.

**CITY'S AUTHORIZED REPRESENTATIVE**, means those individuals identified in writing by the City to act on behalf of the City for this project. City may elect, by written notice to CM/GC, to delegate certain duties of the City's Authorized Representative to more than one party, including without limitation, to an Architect/Engineer. However, nothing in these General Conditions is intended to abrogate the separate design professional responsibilities of Architects under ORS Chapter 671 or of Engineers under ORS Chapter 672.

**FINAL COMPLETION**, means the final completion of all requirements under the Contract, including Contract Closeout as described in Section K but excluding Warranty Work as described in Section 1.2, and the final payment and release of all retainage, if any, released.

**FORCE MAJEURE**, means an act, event or occurrence caused by fire, riot, war, acts of God, nature, sovereign, or public enemy, strikes, freight embargoes or any other act, event or occurrence that is beyond the control of the party to this Contract who is asserting Force Majeure.

**NOTICE TO PROCEED**, means the official written notice from the City stating that the CM/GC is to proceed with the Work defined in the Contract Documents. Notwithstanding the Notice to Proceed, CM/GC shall not be authorized to proceed with the Work until all initial Contract requirements, including the Contract, performance bond and payment bond, and certificates of insurance, have been fully executed and submitted to City in a suitable form.

**OFFER**, means an offer to complete a specific scope for a set price in connection with an invitation to bid and a proposal in connection with a request for proposals.

**OFFEROR**, means an entity that submits an Offer in connection with an invitation to bid and a proposer in connection with a request for proposals.

**OVERHEAD**, means those items which may be included in the CM/GC's markup (general and administrative expense and profit) and that shall not be charged as Direct Cost of the Work, including without limitation such Overhead expenses as wages or salary of personnel above the level of foreman (i.e., superintendents and project managers), and expenses of CM/GC's offices at the job site (e.g. job trailer) including expenses of personnel staffing the job site office.

**PERSON**, means an entity doing business as a sole proprietorship, a partnership, a joint venture, a corporation, a limited liability company or partnership, or any other entity possessing the legal capacity to contract.

**PLANS**, means the drawings which show the location, type, dimensions, and details of the Work to be done under the Contract.

**PUNCHLIST**, means the list of Work yet to be completed or deficiencies which need to be corrected in order to achieve Final Completion of the Contract.

**RECORD DOCUMENT**, means the as-built Plans, Specifications, testing and inspection records, product data, samples, manufacturer and distributor/supplier warranties evidencing transfer to City, operational and maintenance manuals, shop drawings, Change Orders, correspondence, certificate(s) of occupancy, and other documents listed in Subsection B.9.1 of these General Conditions, recording all Services performed.

**SOLICITATION DOCUMENT**, means an invitation to bid or request for proposal or request for quotes.

**SPECIFICATION**, means any description of the physical or functional characteristics of the Work, or of the nature of a supply, service or construction item. Specifications may include a description of any requirement for inspecting, testing or preparing a supply, service or construction item for delivery and the quantities or qualities of materials to be furnished under the Contract. Specifications generally will state the results or products to be obtained and may, on occasion, describe the method and manner of doing the work to be performed. Specifications may be incorporated by reference and/or may be attached to the Contract.

**SUBCONTRACTOR**, means a Person having a direct contract with the CM/GC, or another Subcontractor, to perform one or more items of the Work.

**SUBSTANTIAL COMPLETION**, means the date when the City accepts in writing the construction, alteration or repair of the improvement to real property or any designated portion thereof as having reached that state of completion when it may be used or occupied for its intended purpose. Substantial Completion of facilities with operating systems occurs only after thirty (30) continuous Days of successful, trouble-free operation of the operating systems as provided in Section K.4.2. The Work shall not be considered Substantially Complete if items remaining to be completed cannot be completed without disruption to building occupants.

**SUBSTITUTIONS**, means items that in function, performance, reliability, quality, and general configuration are the same or better than the product(s) specified. Approval of any substitute item shall be solely determined by the City's Authorized Representative. The decision of the City's Authorized Representative is final.

**SUPPLEMENTAL GENERAL CONDITIONS**, means those conditions that remove from, add to, or modify these General



Conditions. Supplemental General Conditions may be included in the Solicitation Document or may be a separate attachment to the Contract.

**WORK**, means the furnishing of all materials, equipment, labor, transportation, services and incidentals necessary to successfully complete any individual item or the entire Contract and the carrying out of duties and obligations imposed by the Contract Documents.

## **A.2 SCOPE OF WORK**

The Work contemplated under this Contract includes all labor, materials, transportation, equipment, expense and services for, and incidental to, the completion of all construction work in connection with the project described in the Contract Documents. The CM/GC shall perform all Work necessary so that the project can be legally occupied and fully used for the intended use as set forth in the Contract Documents.

## **A.3 INTERPRETATION OF CONTRACT DOCUMENTS**

A.3.1 Unless otherwise specifically defined in the Contract Documents, words which have well-known technical meanings or construction industry meanings are used in the Contract Documents in accordance with such recognized meanings. Contract Documents are intended to be complementary. Whatever is called for in one, is interpreted to be called for in all. However, in the event of conflicts or discrepancies among the Contract Documents, interpretations will be based on the following descending order of precedence:

- (1) Contract amendments and Change Orders, with those of later date having precedence over those of an earlier date, including the GMP Amendment;
- (2) The Supplemental General Conditions;
- (3) The City of Sandy Construction Manager/General Contractor Contract Form;
- (4) The General Conditions
- (5) The Plans and Specifications
- (6) The Solicitation Document and any addenda thereto;
- (7) The accepted Offer.

A.3.2 In the case of an inconsistency between Plans and Specifications or within either document not clarified by addendum, the better quality or greater quantity of Work shall be provided in accordance with the City or City's Authorized Representative's interpretation in writing.

A.3.3 If the CM/GC finds discrepancies in, or omissions from the Contract Documents, or if the CM/GC is in doubt as to their meaning, the CM/GC shall at once notify the City or City's Authorized Representative. Matters concerning performance under, and interpretation of requirements of, the Contract Documents will be decided by the City's Authorized Representative. Responses to CM/GC's requests for interpretation of Contract Documents will be made in writing by City's Authorized Representative within any time limits agreed upon or otherwise with reasonable promptness. Interpretations and decisions of the City's Authorized Representative will be consistent with the intent of and reasonably inferable from the Contract Documents. CM/GC shall not proceed without direction in writing from the City's Authorized Representative.

A.3.4 References to standard specifications, manuals, codes of any technical society, organization or association, to the laws or regulations of any governmental authority, whether such reference be specific or by implication, shall mean the latest standard specification, manual, code, laws or regulations in effect in the jurisdiction where the project is occurring on the first published date of the Solicitation Document, except as may be otherwise specifically stated.

#### **A.4 EXAMINATION OF PLANS, SPECIFICATIONS, AND SITE**

- A.4.1 It is understood that the CM/GC, before submitting an Offer, has made a careful examination of the Contract Documents; has become fully informed as to the quality and quantity of materials and the character of the Work required; and has made a careful examination of the location and conditions of the Work and the sources of supply for materials. The City will in no case be responsible for any loss or for any unanticipated costs that may be suffered by the CM/GC as a result of the CM/GC's failure to acquire full information in advance in regard to all conditions pertaining to the Work. No oral agreement or conversation with any officer, agent, or personnel of the City, or with the Architect/Engineer either before or after the execution of this Contract, shall affect or modify any of the terms or obligations herein contained.
- A.4.2 City shall make available to CM/GC, and CM/GC shall study, the results of such test borings and information that City has concerning subsurface conditions and site geology. CM/GC shall inform City of any other site investigation, analysis, study, or test conducted by or for CM/GC or its agents and shall make the results available to City upon City's request.
- A.4.3 Should the Plans or Specifications fail to particularly describe the materials, kind of goods, or details of construction of any aspect of the Work, CM/GC shall have the duty to make inquiry of the City and Architect/Engineer as to what is required prior to performance of the Work. Absent Specifications to the contrary, the materials or processes that would normally be used to produce first quality finished Work shall be considered a part of the Contract requirements.
- A.4.4 Any design errors or omissions noted by the CM/GC shall be reported promptly to the City's Authorized Representative, including without limitation, any nonconformity with applicable laws, statutes, ordinances, building codes, rules and regulations.
- A.4.5 If the CM/GC believes that additional cost or Contract Time is involved because of clarifications or instructions issued by the City's Authorized Representative in response to the CM/GC's notices or requests for information, the CM/GC must submit a written request to the City's Authorized Representative, setting forth the nature and specific extent of the request, including all time and cost impacts against the Contract as soon as possible, but no later than twenty (20) business days after receipt by CM/GC of the clarifications or instructions issued. If the City's Authorized Representative denies CM/GC's request for additional compensation, additional Contract Time, or other relief that CM/GC believes results from the clarifications or instructions, the CM/GC may proceed to file a Claim under Section D.3, Claims Review Process. If the CM/GC fails to perform the obligations of Sections A.4.1 to A.4.3, the CM/GC shall pay such costs and damages to the City as would have been avoided if the CM/GC had performed such obligations.

#### **A.5 INDEPENDENT CONTRACTOR STATUS**

The service or services to be performed under this Contract are those of an independent contractor as defined in ORS 670.600. CM/GC represents and warrants that it is not an officer, employee or agent of the City.

#### **A.6 RETIREMENT SYSTEM STATUS AND TAXES**

CM/GC represents and warrants that it is not a contributing member of the Public Employees' Retirement System and will be responsible for any federal or state taxes applicable to payment received under this Contract. CM/GC will not be eligible for any benefits from these Contract payments of federal Social Security, employment insurance, workers' compensation or the Public Employees' Retirement System, except as a self-employed individual. Unless the CM/GC is subject to backup withholding, City will not withhold from such payments any amount(s) to cover CM/GC's federal or state tax obligations.

#### **A.7 GOVERNMENT EMPLOYMENT STATUS**

- A.7.1 If this payment is to be charged against federal funds, CM/GC represents and warrants that it is not currently employed by the Federal Government. This does not preclude the CM/GC from holding another contract with the Federal Government.
- A.7.2 CM/GC represents and warrants that CM/GC is not an employee of the City for purposes of performing Work under this Contract.



**SECTION B**  
**ADMINISTRATION OF THE CONTRACT**

**B.1 CITY'S ADMINISTRATION OF THE CONTRACT**

- B.1.1 The City's Authorized Representative will provide administration of the Contract as described in the Contract Documents (1) during construction (2) until final payment is due and (3) during the one-year period for correction of Work. The City's Authorized Representative will act on behalf of the City to the extent provided in the Contract Documents, unless modified in writing in accordance with other provisions of the Contract. In performing these tasks, the City's Authorized Representative may rely on the Architect/Engineer or other consultants to perform some or all of these tasks.
- B.1.2 The City's Authorized Representative will visit the site at intervals appropriate to the stage of the CM/GC's operations (1) to become generally familiar with and to keep the City informed about the progress and quality of the portion of the Work completed, (2) to endeavor to guard the City against defects and deficiencies in the Work, and (3) to determine in general if Work is being performed in a manner indicating that the Work, when fully completed, will be in accordance with the Contract Documents. The City's Authorized Representative will not make exhaustive or continuous on-site inspections to check the quality or quantity of the Work. The City's Authorized Representative will neither have control over or charge of, nor be responsible for the construction means, methods, techniques, sequences or procedures, or for the safety precautions and programs in connection with the Work.
- B.1.3 Except as otherwise provided in the Contract Documents or when direct communications have been specifically authorized, the City and CM/GC shall endeavor to communicate with each other through the City's Authorized Representative or designee about matters arising out of or relating to the Contract. Communications by and with the Architect/Engineer's consultants shall be through the Architect/Engineer. Communications by and with Subcontractors and material suppliers shall be through the CM/GC. Communications by and with separate CM/GCs shall be through the City's Authorized Representative.
- B.1.4 Based upon the Architect/Engineer's evaluations of the CM/GC's Application for Payment, or unless otherwise stipulated by the City's Authorized Representative, the Architect/Engineer will review and certify the amounts due the CM/GC and will issue Certificates for Payment in such amounts.

**B.2 CM/GC'S MEANS AND METHODS; MITIGATION OF IMPACTS**

- B.2.1 The CM/GC shall supervise and direct the Work, using the CM/GC's best skill and attention. The CM/GC shall be solely responsible for and have control over construction means, methods, techniques, sequences and procedures and for coordinating all portions of the Work under the Contract, unless the Contract Documents give other specific instructions concerning these matters. If the Contract Documents give specific instructions concerning construction means, methods, techniques, sequences or procedures, the CM/GC shall evaluate the jobsite safety thereof and, except as stated below, shall be fully and solely responsible for the jobsite safety of such means, methods, techniques, sequences or procedures.
- B.2.2 The CM/GC is responsible to protect and maintain the Work during the course of construction and to mitigate any adverse impacts to the project, including those caused by authorized changes, which may affect cost, schedule, or quality.
- B.2.3 The CM/GC is responsible for the actions of all its personnel, laborers, suppliers, and Subcontractors on the project. The CM/GC shall enforce strict discipline and good order among CM/GC's employees and other persons carrying out the Work. The CM/GC shall not permit employment of persons who are unfit or unskilled for the tasks assigned to them.

**B.3 MATERIALS AND WORKMANSHIP**

- B.3.1 The intent of the Contract Documents is to provide for the construction and completion in every detail of the Work described. All Work shall be performed in a professional manner and unless the means or methods of performing a task are specified elsewhere in the Contract Documents, CM/GC shall employ methods that are generally accepted and used by the industry, in accordance with industry standards.
- B.3.2 The CM/GC is responsible to perform the Work as required by the Contract Documents. Defective Work shall be corrected at the CM/GC's expense.

- B.3.3 Work done and materials furnished shall be subject to inspection and/or observation and testing by the City's Authorized Representative to determine if they conform to the Contract Documents. Inspection of the Work by the City's Authorized Representative does not relieve the CM/GC of responsibility for the Work in accordance with the Contract Documents. The review by City or Architect of any method of construction, invention, appliance, process, article, device, or material of any kind is limited to a review for adequacy for the Work and is not approval for use by CM/GC in violation of any patent or other rights of any person or entity.
- B.3.4 CM/GC shall furnish adequate facilities, as required, for the City's Authorized Representative to have safe access to the Work including without limitation walkways, railings, ladders, tunnels, and platforms. Producers, suppliers, and fabricators shall also provide proper facilities and access to their facilities.
- B.3.5 The CM/GC shall furnish Samples of materials for testing by the City's Authorized Representative and include the cost of the Samples in the Contract Price.
- B.3.6 CM/GC shall provide materials in sufficient quantities on hand at such times as to insure uninterrupted progress of Work and shall store materials properly and protect materials as required.
- B.3.7 For all materials and equipment specified or indicated in the Drawings, CM/GC shall provide all labor, materials, equipment, and services necessary for complete assemblies and complete working systems, functioning as intended. CM/GC shall furnish incidental items not indicated on Drawings, nor mentioned in the Specifications, that can be legitimately and reasonably inferred to belong to the Work described, or necessary in good practice to provide a complete assembly or system, as though itemized here in every detail. In all instances, CM/GC shall install material and equipment in strict accordance with each manufacturer's most recent published recommendations and specifications. CM/GC shall be responsible for appropriately sequencing the Work and for verification of suitability of prior work before subsequent construction activities.
- B.3.8 CM/GC shall coordinate submittal approvals and place orders for materials and/or equipment so that delivery of same will be made without delays to the Work. CM/GC shall, upon City's reasonable request, provide documentary evidence that orders have been placed.

#### **B.4 PERMITS**

CM/GC shall obtain all trade permits necessary to comply with specific trade permit requirements. All other permits shall be supplied by City.

#### **B.5 COMPLIANCE WITH GOVERNMENT LAWS AND REGULATIONS**

- B.5.1 CM/GC shall comply with all federal, state and local laws, codes, regulations and ordinances applicable to the Work and the Contract. Failure to comply with such requirements shall constitute a breach of Contract and shall be grounds for Contract termination. Without limiting the generality of the foregoing, CM/GC expressly agrees to comply with the following as applicable:
- (1) Title VI and VII of Civil Rights Act of 1964, as amended;
  - (2) Section 503 and 504 of the Rehabilitation Act of 1973, as amended;
  - (3) the Health Insurance Portability and Accountability Act of 1996;
  - (4) the Americans with Disabilities Act of 1990, as amended;
  - (5) ORS Chapter 659A; as amended
  - (6) all regulations and administrative rules established pursuant to the foregoing laws; and
  - (7) all other applicable requirements of federal and state civil rights and rehabilitation statutes, rules and regulations.

- B.5.2 CM/GC shall comply with all applicable requirements of federal and state civil rights and rehabilitation statutes, rules and regulations; and
- (1) CM/GC shall not discriminate against Disadvantaged, Minority, Women or Emerging Small Business enterprises, as those terms are defined in ORS 200.005, in the awarding of subcontracts (ORS 279A.110).
  - (2) If CM/GC is performing work as a landscape contractor as defined in ORS 671.520(2), CM/GC must have a current, valid landscape contractor's license issued under ORS 671.560.
  - (3) If CM/GC is performing work as a Contractor as defined in ORS 701.005(2), CM/GC must have a current, valid construction contractor's license issued under ORS 701.026.
  - (4) CM/GC shall maintain, in current and valid form, all licenses and certificates required by law, regulation, or this Contract when performing the Work.
  - (5) CM/GC will notify the City immediately if any license, permit, or certification required for performance of this Contract will cease to be in effect for any reason.
- B.5.3 Unless contrary to federal law, CM/GC shall certify that it shall not accept a bid from Subcontractors to perform Work as described in ORS 701.005 under this Contract unless such Subcontractors are registered with the Construction Contractors Board in accordance with ORS 701.035 to 701.055 at the time they submit their bids to the CM/GC.
- B.5.4 Unless contrary to federal law, CM/GC shall certify that each landscape contractor performing Work under this Contract holds a valid landscape contractor's license in accordance with ORS 671.560.
- B.5.5 The following notice is applicable to Contractor or CM/GC who performs excavation Work. ATTENTION: Oregon law requires you to follow rules adopted by the Oregon Utility Notification Center. Those rules are set forth in OAR 952-001-0010 through OAR 952-001-0090. You may obtain copies of the rules by calling the center at (503)232-1987.
- B.5.6 Because the Work will include demolition work, pursuant to ORS 279C.510 the CM/GC shall salvage or recycle construction and demolition debris, if feasible and cost effective.
- B.5.7 Failure to comply with any or all of the requirements of B.5.1 through B.5.6 shall be a breach of Contract and constitute grounds for Contract termination. CM/GC will bear all costs arising from Work performed that it knew, or through exercise of reasonable care should have known, was contrary to any applicable laws, ordinance, rules, or regulations.

## **B.6 SUPERINTENDENCE /PROJECT MANAGEMENT**

- B.6.1 CM/GC shall keep on the site, during the progress of the Work, a competent superintendent and any necessary assistants who shall be satisfactory to the City and who shall represent the CM/GC on the site and who will be empowered to obligate the CM/GC. Directions given to the superintendent by the City's Authorized Representative shall be confirmed in writing to the CM/GC. The Superintendent shall be fluent in both written and verbal English and be able to effectively communicate with the City's Representatives
- B.6.2 The Superintendent, Project Manager and Project Engineer/Assistant Project Manager (if applicable) shall not be removed from the Project by the CM/GC without the prior written authorization of the City. Requests to replace personnel must be made a minimum of thirty (30) calendar days prior to the proposed date of replacement.
- B.6.3 CM/GC shall at all times enforce strict discipline and good order among its subcontractors and employees and shall not employ or work any unfit person, or anyone not skilled in work assigned to that person. City may require the CM/GC to permanently remove any of its officers, agents, employees, or subcontractors from all City properties in cases where City determines in its sole discretion that removal of such is in City's best interests. CM/GC shall not employ any person whom the City may deem incompetent or unfit on the Project except with the prior written consent of the City. City may require removal and replacement of any or all construction superintendents, project managers, foreman, or other staff from the Project upon ten (10) business days written notice to the CM/GC.



B.6.4 CM/GC shall maintain at least one (1) set of reports on the Project prepared by CM/GC's employee(s) present on site, and which includes following information: a brief description of all Work performed on that day; a summary of all pertinent events and/or occurrences on that day including records of all tests and inspections; a list of all subcontractor(s) working on that day; a list of each CM/GC employee working on that day; the total hours worked for each employee; a complete list of all equipment on the Project that day, whether in use or not; the time Work commenced and ended; weather conditions; accidents or injuries; and Work progress made for that day ("Daily Job Reports"). CM/GC shall keep the Daily Job Reports current and in good order and shall make current copies available to City upon request.

## **B.7 INSPECTION**

- B.7.1 City's Authorized Representative and project team shall have safe access to the Work at all times.
- B.7.2 Inspection of the Work will be made by the City's Authorized Representative and its' designees at its discretion. The City's Authorized Representatives will have authority to reject Work that does not conform to the Contract Documents. Any Work found to be not in conformance with the Contract Documents, in the discretion of the City's Authorized Representative, shall be removed and replaced at the CM/GC's expense.
- B.7.3 CM/GC shall make or obtain at the appropriate time all tests, inspections and approvals of portions of the Work required by the Contract Documents or by laws, ordinances, rules, regulations or orders of public authorities having jurisdiction. Unless otherwise provided, the CM/GC shall make arrangements for such tests, inspections and approvals with an independent testing laboratory or entity acceptable to the City, or with the appropriate public authority, and shall bear all related costs of tests, inspections and approvals. Tests or inspections conducted pursuant to the Contract Documents shall be made promptly to avoid unreasonable delay in the Work. The CM/GC shall give the City's Authorized Representative timely notice of when and where tests and inspections are to be made so that the City's Authorized Representative(s) may be present for such procedures. Required certificates of testing, inspection or approval shall, unless otherwise required by the Contract Documents, be secured by the CM/GC and promptly delivered to the City's Authorized Representative(s).
- B.7.4 As required by the Contract Documents, Work done or material used without inspection or testing by the City's Authorized Representative(s) may be ordered removed at the CM/GC's expense.
- B.7.5 If directed to do so any time before the Work is accepted, the CM/GC shall uncover portions of the completed Work for inspection. After inspection, the CM/GC shall restore such portions of Work to the standard required by the Contract. If the Work uncovered is unacceptable or was done without sufficient notice to the City's Authorized Representative, the uncovering and restoration shall be done at the CM/GC's expense. If the Work uncovered is acceptable and was done with sufficient notice to the City's Authorized Representative(s), the uncovering and restoration will be paid for as a Change Order.
- B.7.6 If any testing or inspection reveals failure of the portions of the Work to comply with requirements established by the Contract Documents, all costs made necessary by such failure, including those of repeated procedures and compensation for the City's Authorized Representative's and Architect/Engineer's services and expenses, shall be at the CM/GC's expense.
- (1) CM/GC shall be granted one (1) re-inspection for each re-inspection required by the Contract Documents. Additional inspections required beyond the initial and re-inspection shall be the responsibility of the CM/GC. The City's Testing and Inspection firm shall not unreasonably require re-inspections.
- B.7.7 When the United States government participates in the cost of the Work, or the City has an agreement with other public or private organizations, or if any portion of the Work is being performed for a third party or in close proximity to third party facilities, representatives of these organizations have the right to inspect the Work affecting their interests or property. Their right to inspect shall not make them a party to the Contract and shall not interfere with the rights of the parties of the Contract. Instructions or orders of such parties shall be transmitted to the CM/GC, through the City's Authorized Representative.

## **B.8 SEVERABILITY**

If any provision of this Contract is declared by a court to be illegal or in conflict with any law, the validity of the remaining terms and provisions shall not be affected and the rights and obligations of the parties shall be construed and enforced as if the Contract did not contain the particular provision held to be invalid.

## **B.9 ACCESS TO RECORDS**

- B.9.1 CM/GC shall keep, at all times on the Work site, one record copy of the complete Contract Documents, including the Plans, Specifications, Change Orders and addenda, in good order and marked currently to record field changes and selections made during construction, and one record copy of Shop Drawings, Product Data, Samples and similar submittals, and shall at all times give the City's Authorized Representative access thereto.
- B.9.2 CM/GC shall retain and the City and its duly authorized representatives shall have access to, for a period not less than six (6) years, all Record Documents, financial and accounting records, and other books, documents, papers and records of CM/GC which are pertinent to the Contract including records pertaining to Overhead and indirect costs, for the purpose of making audit, examination, excerpts and transcripts. If for any reason, any part of the Contract is involved in a dispute resolution process, CM/GC shall retain all such records until all disputes are resolved. The City and/or its agents shall continue to be provided full access to the records during any dispute resolution process.

#### **B.10 WAIVER**

Failure of the City to enforce any provision of this Contract shall not constitute a waiver or relinquishment by the City of the right to such performance in the future nor of the right to enforce any other provision of this Contract.

#### **B.11 SUBCONTRACTS AND ASSIGNMENT**

- B.11.1 CM/GC shall require each Subcontractor, to the extent of the Work to be performed by the Subcontractor, to be bound by the terms and conditions of these General Conditions, and to assume toward the CM/GC all of the obligations and responsibilities which the CM/GC assumes toward the City thereunder, unless (1) the same are clearly inapplicable to the subcontract at issue because of legal requirements or industry practices, or (2) specific exceptions are requested by CM/GC and approved in writing by City. Where appropriate, CM/GC shall require each Subcontractor to enter into similar agreements with sub-subcontractors at any level. CM/GC shall include assignment provisions in each subcontract as indicated in the termination provisions set forth in these General Conditions.
- B.11.2 At City's request, CM/GC shall submit to City prior to their execution either CM/GC's form of subcontract, or the subcontract to be executed with any particular Subcontractor. If City disapproves such form, CM/GC shall not execute the form until the matters disapproved are resolved to City's satisfaction. City's review, comment upon or approval of any such form shall not relieve CM/GC of its obligations under this Agreement or be deemed a waiver of such obligations of CM/GC.
- B.11.3 CM/GC shall not assign, sell, or transfer its rights, or delegate its responsibilities under this Contract, in whole or in part, without the prior written approval of the City. No such written approval shall relieve CM/GC of any obligations of this Contract, and any transferee shall be considered the agent of the CM/GC and bound to perform in accordance with the Contract Documents. CM/GC shall remain liable as between the original parties to the Contract as if no assignment had occurred.
- B.11.4 CM/GC shall first notify City prior to any change in the name or legal nature or status of CM/GC's entity. City shall determine if CM/GC's intended change is permissible while performing this Contract.

#### **B.12 SUCCESSORS IN INTEREST**

The provisions of this Contract shall be binding upon and shall accrue to the benefit of the parties to the Contract and their respective permitted successors and assigns.

#### **B.13 CITY'S RIGHT TO DO WORK**

City reserves the right to perform other or additional work at or near the project site with other forces than those of the CM/GC. If such work takes place within or next to the project site, CM/GC will coordinate work with the other contractors or forces, cooperate with all other contractors or forces, carry out the Work in a way that will minimize interference and delay for all forces involved, place and dispose of materials being used so as not to interfere with the operations of another, and join the Work with the work of the others in an acceptable manner and perform it in proper sequence to that of the others. The City's Authorized Representative will resolve any disagreements that may arise between or among CM/GC and the other contractors over the method or order of doing all work (including the Work). In case of unavoidable interference, the City's Authorized Representative will establish work priority (including the Work) which generally will be in the sequence that the contracts were awarded.

#### **B.14 OTHER CONTRACTS**

In all cases and at any time, the City has the right to execute other contracts related to or unrelated to the Work of this Contract. The CM/GC of this Contract will fully cooperate with any and all other contractors without additional cost to the City in the manner described in section B.13. Specifically and without limitation,

(1) CM/GC shall coordinate and work in conjunction with the City and City's third party consultants to proactively commission the Project in preparation of City occupancy and acceptance.

(2) CM/GC shall be granted one (1) re-inspection review for each inspection activity required by the Contract. Additional reviews required beyond the initial and re-inspections shall be the responsibility of the CM/GC. City and City's third party consultants shall not unreasonably require re-inspections. The City reserves the right to make the final determination if a re-inspection is required or if CM/GC may proceed by incorporating the inspection findings.

(3) CM/GC shall provide City with a copy of all written communications between CM/GC and City's consultants at the same time as that communication is made to such consultants, including, without limitation, all requests for information, correspondence, submittals, notices, and change order proposals. CM/GC shall confirm oral communications in writing.

(4) CM/GC is liable for costs incurred by City for professional services for interpretations or decisions of matters where the information sought is equally available to the party making the request.

#### **B.15 GOVERNING LAW**

This Contract shall be governed by and construed in accordance with the laws of the State of Oregon without regard to principles of conflict of laws.

#### **B.16 LITIGATION**

Any Claim between City and CM/GC that arises from or relates to this Contract and that is not resolved through the Claims Review Process in Section D.3 shall be brought and conducted solely and exclusively within the Circuit Court of Clackamas County for the State of Oregon; provided, however, if a Claim must be brought in a federal forum, then it shall be brought and conducted solely and exclusively within the United States City Court for the City of Oregon. Any trial will be to the court without a jury. In no event shall this section be construed as a waiver by the City of defense or immunity, whether sovereign immunity, governmental immunity, or otherwise, from any claim or from the jurisdiction of any court. CM/GC BY EXECUTION OF THIS CONTRACT HEREBY CONSENTS TO THE IN PERSONAM JURISDICTION OF THE COURTS REFERENCED IN THIS SECTION B.16.

#### **B.17 ALLOWANCES**

B.17.1 The CM/GC shall include in the Contract Price all allowances stated in the Contract Documents. Items covered by allowances shall be supplied for such amounts and by such persons or entities as the City may direct.

B.17.2 Unless otherwise provided in the Contract Documents:

(1) when finally reconciled, allowances shall cover the cost to the CM/GC of materials and equipment delivered at the site and all required taxes, less applicable trade discounts;

(2) CM/GC's costs for unloading and handling at the site, labor, installation costs, Overhead, profit and other expenses contemplated for stated allowance amounts shall be included in the Contract Price but not in the allowances;

(3) Unless City requests otherwise, CM/GC shall provide to City a proposed fixed price for any allowance work prior to its performance.

#### **B.18 SUBMITTALS, SHOP DRAWINGS, PRODUCT DATA AND SAMPLES**

B.18.1 The CM/GC shall prepare and keep current, for the approval of City's Authorized Representative, a schedule and list of submittals which is coordinated with the CM/GC's construction schedule and allows the Architect/Engineer reasonable time, but in no case less than ten (10) business days, to review submittals. City reserves the right to approve the schedule and list of submittals. Submittals include, without limitation, Shop Drawings, Product Data, and Samples which are described below:

(1) Shop Drawings are drawings, diagrams, schedules and other data specially prepared for the Work by the CM/GC or a Subcontractor (including any sub-subcontractor), manufacturer, supplier or distributor to illustrate some portion of the Work.



(2) Product Data are illustrations, standard schedules, performance charts, instructions, brochures, diagrams and other information furnished by the CM/GC to illustrate materials or equipment for some portion of the Work.

(3) Samples are physical examples which illustrate materials, equipment or workmanship and establish standards by which the Work will be judged.

B.18.2 Shop Drawings, Product Data, Samples and similar submittals are not Contract Documents. The purpose of their submittal is to demonstrate for those portions of the Work for which submittals are required by the Contract Documents the way by which the CM/GC proposes to conform to the information given and the design concept expressed in the Contract Documents. Review of submittals by the Architect/Engineer or City is not conducted for the purpose of determining the accuracy and completeness of other details such as dimensions and quantities, or for substantiating instructions for installation or performance of equipment or systems, or for approval of safety precautions or, unless otherwise specifically stated by the Architect/Engineer or City, of any construction means, methods, techniques, sequences or procedures, all of which remain the responsibility of the CM/GC as required by the Contract Documents. The Architect/Engineer's or City's review of the CM/GC's submittals shall not relieve the CM/GC of its obligations under the Contract Documents. The Architect/Engineer's or City's review of a specific item shall not indicate approval of an assembly of which the item is a component. Informational submittals upon which the Architect/Engineer or City is not expected to take responsive action may be so identified in the Contract Documents. Submittals which are not required by the Contract Documents may be returned without action.

B.18.3 The CM/GC shall review for compliance with the Contract Documents, approve and submit to the Architect/Engineer Shop Drawings, Product Data, Samples and similar submittals required by the Contract Documents with reasonable promptness and in such sequence as to cause no delay in the Work or in the activities of the City or of separate CM/GCs. Submittals which are not marked as reviewed for compliance with the Contract Documents and approved by the CM/GC may be returned without action.

(1) CM/GC shall be granted one (1) resubmittal review for each submittal required by the Contract Documents. Additional reviews required beyond the initial submittal and re-submittal shall be the responsibility of the CM/GC. A/E shall not unreasonably require re-submittals. The City reserves the right to make the final determination if a re-submittal is required or if CM/GC may proceed by incorporating A/E's comments.

B.18.4 By approving and submitting Shop Drawings, Product Data, Samples and similar submittals, the CM/GC represents that the CM/GC has determined and verified materials, field measurements and field construction criteria related thereto, or will do so, and has checked and coordinated the information contained within such submittals with the requirements of the Work and of the Contract Documents.

B.18.5 The CM/GC shall perform no portion of the Work for which the Contract Documents require submittal and review of Shop Drawings, Product Data, Samples or similar submittals until the respective submittal has been approved by the Architect/Engineer. CM/GC shall be responsible to provide submittals for A/E and City review in a timely manner to allow sufficient time for review and comment. Delay claims associated with submittals lacking appropriate review time allowances shall not be considered.

B.18.6 The Work shall be in accordance with approved submittals except that the CM/GC shall not be relieved of responsibility for deviations from requirements of the Contract Documents by the Architect/Engineer's or City's review or approval of Shop Drawings, Product Data, Samples or similar submittals unless the CM/GC has specifically informed the Architect/Engineer and City in writing of such deviation at the time of submittal and (i) the Architect/Engineer has given written approval to the specific deviation as a minor change in the Work, or (ii) a Change Order has been executed by City authorizing the deviation. The CM/GC shall not be relieved of responsibility for errors or omissions in Shop Drawings, Product Data, Samples or similar submittals by any review or approval thereof.

B.18.7 In the event that City elects not to have the obligations and duties described under this Section B.18 performed by the Architect/Engineer, or in the event no Architect/Engineer is employed by City on the project, all obligations and duties assigned to the Architect/Engineer hereunder shall be performed by the City's Authorized Representative.

## **B.19 SUBSTITUTIONS**

The CM/GC may make Substitutions only with the consent of the City and at its sole discretion, after evaluation by the City's Authorized Representative and only in accordance with a Change Order. Substitutions shall be subject to the requirements of the bid documents. By making requests for Substitutions, the CM/GC represents that the CM/GC has personally investigated the proposed substitute product; represents that the CM/GC will provide the same warranty for

the Substitution that the CM/GC would for the product originally specified unless approved otherwise; certifies that the cost data presented is complete and includes all related costs under this Contract including redesign costs, and waives all claims for additional costs related to the Substitution which subsequently become apparent; and will coordinate the installation of the accepted Substitution, making such changes as may be required for the Work to be completed in all respects.

#### **B.20 USE OF PLANS AND SPECIFICATIONS**

Plans, Specifications and related Contract Documents, including those in electronic format, furnished to CM/GC by City or City's Architect/Engineer shall be used solely for the performance of the Work under this Contract. CM/GC and its Subcontractors and suppliers are authorized to use and reproduce applicable portions of such documents appropriate to the execution of the Work, but shall not claim any ownership or other interest in them beyond the scope of this Contract, and no such interest shall attach. Unless otherwise indicated, all common law, statutory and other reserved rights, in addition to copyrights, are retained by City.

#### **B.21 FUNDS AVAILABLE AND AUTHORIZED**

City reasonably believes at the time of entering into this Contract that sufficient funds are available and authorized for expenditure to finance the cost of this Contract within the City's appropriation or limitation.

#### **B.22 NO THIRD PARTY BENEFICIARIES**

City and CM/GC are the only parties to this Contract and are the only parties entitled to enforce its terms. Nothing in this Contract gives, is intended to give, or shall be construed to give or provide any benefit or right, whether directly, indirectly, or otherwise, to third persons unless such third persons are individually identified by name herein and expressly described as intended beneficiaries of the terms of this Contract.

#### **B.23 RULES REGARDING CONTACT WITH THE PRESS AND PUBLICATIONS**

CM/GC shall issue no news release, press release, or other statement to members of the news media or any other publication regarding this Agreement or the Project within one (1) year of Project completion without City's prior written authorization. CM/GC shall not post or publish any textual or visual representations of the Project without approval of City.

### **SECTION C WAGES, LABOR, AND PAYMENT**

#### **C.1 PREVAILING WAGE RATES ON PUBLIC WORKS**

C.1.1 This Contract is subject to payment of prevailing wages under ORS 279C.800 to 279C.870. Each worker the CM/GC, subcontractor or other person who is party to the contract uses in performing all or part of the Contract must be paid not less than the applicable prevailing rate of wage for each trade or occupation as defined by the Director of the State of Oregon Bureau of Labor and Industries ("BOLI") in the applicable publication entitled Definitions of Covered Occupations for Public Works Contracts in Oregon. The latest prevailing wage rates for public works contracts in Oregon are contained in the following publications: The Prevailing Wage Rates for Public Works Projects in Oregon, the PWR Apprenticeship Rates, and any amendments to the PWR rates or Apprenticeship rates. Such publications can be reviewed electronically at [http://www.boli.state.or.us/BOLI/WHD/PWR/pwr\\_state.shtml](http://www.boli.state.or.us/BOLI/WHD/PWR/pwr_state.shtml).

C.1.2 This Contract is \_\_\_\_/is not \_\_\_\_ also subject to payment of prevailing wages under the federal Davis-Bacon Act (40 U.S.C. 3141 et seq.). Notwithstanding Section C.1.1 of this Section, if this Contract is also subject to payment of prevailing wages under the Davis-Bacon Act, CM/GC and any subcontractors must pay the higher of the federal prevailing wage rate or the state prevailing wage. The latest federal prevailing wage rates can be reviewed electronically at <http://www.wdol.gov/Index.aspx> (Search for Oregon, Clackamas County, Building Construction Type). Contractors shall follow all prevailing wage rules including posting the Davis Bacon Poster at the worksite and submitting certified payroll records. The poster is available at <http://www.dol.gov/whd/regs/compliance/posters/fedprojc.pdf>. The payroll form is at <http://www.dol.gov/whd/forms/wh347instr.htm>. If the Contract is subject to federal prevailing wages, CM/GC and any subcontractors must pay the higher of the federal prevailing wage rate (under the Davis-Bacon Act) or the state prevailing wage.

C.1.3 The applicable prevailing wages under subsections and, if applicable, C.1.2, will be those in effect on the start of the Construction Phase as described in Section 3.b of the CM/GC Contract, and shall be incorporated by reference in the GMP Amendment or, if applicable, the Early Work Amendment.

- C.1.4 During the Construction Phase, CM/GC and all Subcontractors will keep the prevailing wage rates for this Project posted in a conspicuous and accessible place in or about the Project.
- C.1.5 The City will pay a fee to the Commissioner of the Oregon Bureau of Labor and Industries as provided in ORS 279C.825. The fee will be paid to the Commissioner under the administrative rule of the Commissioner.
- C.1.6 CM/GC or any Subcontractor also provides for or contributes to a health and welfare plan or a pension plan, or both, for its employees on the Project, it will post notice describing such plans in a conspicuous and accessible place in or about the Project during the Construction Phase. The notice will contain information on how and where to make claims and where to obtain future information.

## **C.2 PAYROLL CERTIFICATION; ADDITIONAL RETAINAGE; FEE REQUIREMENTS**

- C.2.1 In accordance with ORS 279C.845, the CM/GC and every Subcontractor shall submit written certified statements to the City's Authorized Representative, on the form prescribed by the Commissioner of the Bureau of Labor and Industries, certifying the hourly rate of wage paid each worker which the CM/GC or the Subcontractor has employed on the project and further certifying that no worker employed on the project has been paid less than the prevailing rate of wage or less than the minimum hourly rate of wage specified in the Contract, which certificate and statement shall be verified by the oath of the CM/GC or the Subcontractor that the CM/GC or Subcontractor has read such statement and certificate and knows the contents thereof and that the same is true to the CM/GC or Subcontractor's best knowledge and belief. The certified statements shall set out accurately and completely the payroll records for the prior week including the name and address of each worker, the worker's correct classification, rate of pay, daily and weekly number of hours worked, deductions made and actual wages paid. Certified statements for each week during which the CM/GC or Subcontractor has employed a worker on the project shall be submitted once a month, by the fifth business day of the following month.

The CM/GC and Subcontractors shall preserve the certified statements for a period of six (6) years from the date of completion of the Contract.

- C.2.2 The City shall retain 25 percent of any amount earned by the CM/GC on this public works project until the CM/GC has filed the certified statements required by section C.2.1. The City shall pay to the CM/GC the amount retained under this subsection within 14 days after the CM/GC files the required certified statements, regardless of whether a Subcontractor has failed to file certified statements.
- C.2.3 The CM/GC shall retain 25 percent of any amount earned by a first-tier Subcontractor on this public works project until the first-tier Subcontractor has filed with the City the certified statements required by C.2.1. Before paying any amount retained under this subsection, the CM/GC shall verify that the first-tier Subcontractor has filed the certified statement. Within 14 days after the first-tier Subcontractor files the required certified statement the CM/GC shall pay the first-tier Subcontractor any amount retained under this subsection.

## **C.3 PROMPT PAYMENT AND CONTRACT CONDITIONS**

- C.3.1 Pursuant to ORS 279C.505 and as a condition to CM/GC's performance hereunder, the CM/GC shall:

(1) Make payment promptly, as due, to all persons supplying to CM/GC labor or materials for the prosecution of the Work provided for in this Contract.

(2) Pay all contributions or amounts due the State Industrial Accident Fund from such CM/GC or Subcontractor incurred in the performance of the Contract.



(3) Not permit any lien or claim to be filed or prosecuted against the City on account of any labor or material furnished. CM/GC will not assign any claims that CM/GC has against City, or assign any sums due by City, to Subcontractors, suppliers, or manufacturers, and will not make any agreement or act in any way to give Subcontractors a claim or standing to make a claim against the City.

(4) Pay to the Department of Revenue all sums withheld from employees pursuant to ORS 316.167.

(5) Demonstrate that an employee drug testing program is in place as follows:

(A) CM/GC represents and warrants that CM/GC has in place at the time of the execution of this contract, and shall maintain during the term of this Contract, a qualifying employee drug testing program for its employees that includes, at a minimum, the following:

- i. a written employee drug testing policy,
- ii. required drug testing for all new subject employees or, alternatively, required testing of all subject employees every 12 months on a random selection basis, and
- iii. requested testing of a subject employee when the CM/GC has reasonable cause to believe the subject employee is under the influence of drugs.

A drug testing program that meets the above requirements will be deemed a "qualifying employee drug testing program". For the purposes of this section, an employee is a "subject employee" only if that employee will be working on the project job site.

(B) CM/GC shall require each subcontractor providing labor for the Project to:

- i. demonstrate to the CM/GC that it has a qualifying employee drug testing program for the Subcontractor's subject employees, and represent and warrant to the CM/GC that the qualifying employee drug testing program is in place at the time of subcontract execution and will continue in full force and effect for the duration of the subcontract, or
- ii. require that the Subcontractor's subject employees participate in the CM/GC's qualifying employee drug testing program for the duration of the Project.

C.3.2 Pursuant to ORS 279C.515, and as a condition to City's performance hereunder, CM/GC agrees:

(1) If City becomes aware that CM/GC has failed, neglected or refused to make prompt payment of any claim for labor or services furnished to the CM/GC or a Subcontractor by any person in connection with the project as such claim becomes due, the proper officer(s) representing the City may pay the claim and charge the amount of the payment against funds due or to become due CM/GC under this Contract within ten (10) business days written notice to CM/GC. Payment of claims in this manner shall not relieve the CM/GC or the CM/GC's surety from obligation with respect to any unpaid claims. Notwithstanding any other remedies available to the City,

(2) If the CM/GC or a first-tier Subcontractor fails, neglects or refuses to make payment to a person furnishing labor or materials in connection with the public contract for a public improvement within thirty (30) Days after receipt of payment from City or a CM/GC, the CM/GC or first-tier Subcontractor shall owe the person the amount due plus interest charges commencing at the end of the 10-Day period that payment is due and ending upon final payment, unless payment is subject to a good faith dispute. The rate of interest charged to the CM/GC or first-tier Subcontractor on the amount due shall equal three times the discount rate on 90-Day commercial paper in effect at the Federal Reserve Bank in the Federal Reserve City that includes Oregon on the date that is thirty (30) Days after the date when payment was received from City or from the CM/GC, but the rate of interest shall not exceed thirty (30) percent. The amount of interest may not be waived.

(3) If the CM/GC or a Subcontractor fails, neglects or refuses to make payment to a person furnishing labor or materials in connection with the Contract, the person may file a complaint with the Construction Contractors Board, unless payment is subject to a good faith dispute. Every contract related to this Contract shall contain a similar clause.

C.3.3 Pursuant to ORS 279C.545, Construction workers employed by the CM/GC or its Subcontractor will be foreclosed from the right to collect for any overtime under this Contract unless a claim for payment is filed with the CM/GC or Subcontractor within 90 days from the completion of the Contract, providing the CM/GC or Subcontractor has:

(1) Caused a circular clearly printed in blackface pica type and containing a copy of this section to be posted in a prominent place alongside the door of the timekeeper's office or in a similar place which is readily available and freely visible to any or all workers employed on the Work, and

(2) Maintained such circular continuously posted from the inception to the completion of the Contract on which workers are or have been employed.

C.3.4 Pursuant to ORS 279C.580, CM/GC shall include in each subcontract for property or services entered into by the CM/GC and a first-tier Subcontractor, including a material supplier, for the purpose of performing a construction contract:

(1) A payment clause that obligates the CM/GC to pay the first-tier Subcontractor for satisfactory performance under its subcontract within ten (10) Days out of such amounts as are paid to the CM/GC by City under the Contract;

(2) An interest penalty clause that obligates the CM/GC if payment is not made within thirty (30) Days after receipt of payment from City, to pay to the first-tier Subcontractor an interest penalty on amounts due in the case of each payment not made in accordance with the payment clause included in the subcontract pursuant to paragraph (a) of this subsection. CM/GC or first-tier Subcontractor shall not be obligated to pay an interest penalty if the only reason that the CM/GC or first-tier Subcontractor did not make payment when payment was due is that the CM/GC or first-tier Subcontractor did not receive payment from City or CM/GC when payment was due. The interest penalty shall be for the period beginning on the day after the required payment date and ending on the date on which payment of the amount due is made; and shall be computed at the rate specified in ORS 279C.515(2).

(3) A clause which requires each of CM/GC's Subcontractor's to include, in each of their contracts with lower-tier Subcontractors or suppliers, provisions to the effect that the first-tier Subcontractor shall pay its lower-tier Subcontractors and suppliers in accordance with the provisions of subsections (a) and (b), above and requiring each of their Subcontractors and suppliers to include such clauses in their subcontracts and supply contracts.

C.3.5 All employers, including CM/GC, that employ subject workers who work under this contract in the State of Oregon shall comply with ORS 656.017 and provide the required Workers' Compensation coverage, unless such employers are exempt under ORS 656.126. CM/GC shall ensure that each of its Subcontractors complies with these requirements.

#### **C.4 PAYMENT FOR MEDICAL CARE**

Pursuant to ORS 279C.530, and as a condition to City's performance hereunder, CM/GC shall promptly, as due, make payment to any person, partnership, association or corporation furnishing medical, surgical, and hospital care or other needed care and attention, incident to sickness or injury, to the employees of such CM/GC, all sums of which the CM/GC agrees to pay for such services and all moneys and sums which the CM/GC has collected or deducted from the wages of personnel pursuant to any law, contract or agreement for the purpose of providing or paying for such services.

#### **C.5 HOURS OF LABOR**

As a condition to City's performance hereunder, CM/GC shall comply with ORS 279C.520 and 279C.540, as amended from time to time and incorporated herein by this reference:

Except as may otherwise be provided in an applicable collective bargaining agreement with a labor organization, CM/GC shall not employ and shall require that its Subcontractors not employ any person to perform construction work for more than ten hours in any one day, or 40 hours in any one week, except in cases of necessity, emergency, or where the public policy absolutely requires it, and in such cases, except in cases of Contracts for personal services as defined in ORS 279A.055, the laborer shall be paid at least time and a half pay:

(1) For all overtime in excess of eight (8) hours a day or forty (40) hours in any one week when the work week is five consecutive Days, Monday through Friday; and

(2) For all overtime in excess of ten (10) hours a day or forty (40) hours in any one week when the work week is four consecutive Days, Monday through Friday; and

(3) For all Work performed on Saturday and on any legal holiday specified in any applicable collective bargaining agreement or ORS 279C.540(1)(b).

(4) The requirement to pay at least time and a half for all overtime worked in excess of 40 hours in any one week shall not apply to individuals who are excluded under ORS 653.010 to 653.261 or under 29 U.S.C. Section 201 to 209 from

receiving overtime. Contractor shall and shall require its Subcontractors to give notice in writing to their employees who work under this Contract, either at the time of hire or before commencement of Work on the Contract, or by posting a notice in a location frequented by employees, of the number of hours per day and days per week that the employees may be required to work.

This Section C.5 shall not excuse CM/GC from completion of the Work within the time required under this Contract.

## **SECTION D CHANGES IN THE WORK**

### **D.1 CHANGES IN WORK**

D.1.1 The terms of this Contract shall not be waived, altered, modified, supplemented or amended in any manner whatsoever without prior written approval of the City's Authorized Representative, and then only in a manner consistent with the Agreement and, if not prohibited by the Agreement, the Change Order provisions of this Section D.1 and after any necessary approvals required by public contracting laws or the City's contracting rules have been obtained. Otherwise, a formal contract amendment is required, which shall not be effective until its execution by the parties to this Contract and all approvals required by public contracting laws or City's contracting rules have been obtained.

D.1.2 It is mutually agreed that changes in Plans, quantities, or details of construction are inherent in the nature of construction and may be necessary or desirable during the course of construction. Within the general scope of this Contract, the City's Authorized Representative may at any time, without notice to the sureties and without impairing the Contract, require changes consistent with this Section D.1. All Change Order Work shall be executed under the conditions of the Contract Documents. Such changes may include, but are not limited to:

- (1) Modification of specifications and design.
- (2) Increases or decreases in quantities.
- (3) Increases or decreases to the amount of Work.
- (4) Addition or elimination of any Work item.
- (5) Change in the duration of the project.
- (6) Acceleration or delay in performance of Work.
- (7) Deductive changes.

Deductive changes are those that reduce the scope of the Work, and shall be made by mutual agreement whenever feasible. In cases of suspension or partial termination under Section J, City reserves the right to unilaterally impose a deductive change and to self perform such Work, for which the provisions of B.13 (City's Right to Do Work) shall then apply.

Adjustments in compensation shall be made under the provisions of D.1.3, in which costs for deductive changes shall be based upon a Direct Costs adjustment together with the related percentage markup specified for profit, Overhead and other indirect costs, unless otherwise agreed to by City.

D.1.3 The City and CM/GC agree that Change Order Work shall be administered and compensated according to the following:

(1) *Unit pricing* may be utilized at the City's option when unit prices or solicitation alternates were provided that established the cost for additional Work, and a binding obligation exists under the Contract on the parties covering the terms and conditions of the additional Work.

(2) If the City elects not to utilize unit pricing, or in the event that unit pricing is not available or appropriate, *fixed pricing* may be used for Change Order Work. In fixed pricing the basis of payments or total price shall be agreed upon in writing between the parties to the Contract, and shall be established before the Work is done whenever feasible. The mark-ups set forth in D.1.3(c) shall be utilized by the parties as a guide in establishing fixed pricing, and will not be exceeded by City without adequate justification. Cost and price data relating to Change Orders shall be supplied by CM/GC to City upon request, but City shall be under no obligation to make such requests.

(3) In the event that unit pricing and fixed pricing are not utilized, then Change Order Work shall be performed on a *cost*



reimbursement basis for Direct Costs. Such Work shall be compensated on the basis of the actual, reasonable and allowable cost of labor, equipment, and material furnished on the Work performed. In addition, the following markups shall be added to the CM/GC's or Subcontractor's Direct Costs as full compensation for profit, Overhead and other indirect costs for Work directly performed with the CM/GC's or Subcontractor's own forces:

On Labor..... 10%                      On Equipment..... 5%                      On Materials..... 5%

When Change Order Work under D.1.3(c) is invoiced by an authorized Subcontractor at any level, each ascending tier Subcontractor or CM/GC will be allowed a supplemental mark-up of five (5) percent on each piece of subcontract Work covered by such Change Order .

Payments made to the CM/GC shall be complete compensation for Overhead, profit, and all costs that were incurred by the CM/GC or by other forces furnished by the CM/GC, including Subcontractors, for Change Order Work. City may establish a maximum cost for Change Order Work under this Section D.1.3(c), which shall not be exceeded for reimbursement without additional written authorization from City. CM/GC shall not be required to complete such Change Order Work without additional authorization.

D.1.4 Any necessary adjustment of Contract Time that may be required as a result of a Change Order must be agreed upon by the parties before the start of the Change Order Work unless City's Authorized Representative authorizes CM/GC in writing to start the Work before agreement on Contract Time adjustment. CM/GC shall submit any request for additional compensation (and additional Contract Time if CM/GC was authorized to start Work before an adjustment of Contract Time was approved) as soon as possible but no later than thirty (30) Days after receipt of the Change Order. If CM/GC's request for additional compensation or adjustment of Contract Time is not made within the thirty (30) day time limit, CM/GC's requests pertaining to that Change Order are barred. The thirty (30) day time limit for making requests shall not be extended for any reason, including without limitation CM/GC's claimed inability to determine the amount of additional compensation or adjustment of Contract Time, unless an extension is granted in writing by City. If the City's Authorized Representative denies CM/GC's request for additional compensation or adjustment of Contract Time, CM/GC may proceed to file a Claim under Section D.3, Claims Review Process. No other reimbursement, compensation, or payment will be made, except as provided in Section D.1.5 for impact claims.

D.1.5 If any Change Order Work under Section D.1.3 causes an increase or decrease in the CM/GC's cost of, or the Contract Time required for the performance of, any other part of the Work under this Contract, the CM/GC must submit a written request to the City's Authorized Representative, setting forth the nature and specific extent of the request, including all time and cost impacts against the Contract as soon as possible, but no later than thirty (30) Days after receipt of the Change Order by CM/GC.

The thirty (30) day time limit applies to claims of Subcontractors, suppliers, or manufacturers that may be affected by the Change Order and that request additional compensation or an extension of Contract Time to perform; CM/GC has responsibility for contacting its Subcontractors, suppliers, or manufacturers within the thirty (30) day time limit, and including their requests with CM/GC's requests. If the request involves Work to be completed by Subcontractors, or materials to be furnished by suppliers or manufacturers, such requests shall be submitted to the CM/GC in writing with full analysis and justification for the compensation and additional Contract Time requested. The CM/GC will analyze and evaluate the merits of the requests submitted by Subcontractors, suppliers, and manufacturers to CM/GC prior to including those requests and CM/GC's analysis and evaluation of those requests with CM/GC's requests for additional compensation or Contract Time that CM/GC submits to the City's Authorized Representative. Failure of Subcontractors, suppliers, manufacturers or others to submit their requests to CM/GC for inclusion with CM/GC's requests submitted to City's Authorized Representative within the time period and by the means described in this section shall constitute a waiver of these Subcontractor claims. The City's Authorized Representative and the City will not consider direct requests or claims from Subcontractors, suppliers, manufacturers or others not a party to this Contract. The consideration of such requests and claims under this section does not give any person, not a party to the Contract the right to bring a claim against the State of Oregon, whether in this claims process, in litigation, or in any dispute resolution process.

If the City's Authorized Representative denies the CM/GC's request for additional compensation or an extension of Contract Time, the CM/GC may proceed to file a Claim under Section D.3, Claims Review Process.

D.1.6 No request or Claim by the CM/GC for additional costs or an extension of Contract Time shall be allowed if made after receipt of final payment application under this Contract. CM/GC agrees to submit its final payment application within sixty (60) business days after Substantial Completion, unless written extension is granted by City. CM/GC shall not delay final payment application for any reason, including without limitation nonpayment of Subcontractors, suppliers,

manufacturers or others not a party to this Contract, or lack of resolution of a dispute with City or any other person of matters arising out of or relating to the Contract. If CM/GC fails to submit its final payment application within sixty (60) business days after Substantial Completion, and CM/GC has not obtained written extension by City, all requests or Claims for additional costs or an extension of Contract Time shall be waived.

D.1.7 It is understood that changes in the Work are inherent in construction of this type. The number of changes, the scope of those changes, and the effect they have on the progress of the original Work cannot be defined at this time. The CM/GC is notified that numerous changes may be required and that there will be no compensation made to the CM/GC directly related to the number of changes. Each change will be evaluated for extension of Contract Time and increase or decrease in compensation based on its own merit.

## **D.2 DELAYS**

D.2.1 Delays in construction include "Avoidable Delays", which are defined in Section D.2.1.1, and "Unavoidable Delays", defined in Section D.2.1.2. Further, "Concurrent Delays" are defined in Section D.2.1.3 and "Offsetting Delays" defined in Section D.2.1.4.

(1) Avoidable Delays include any delays other than Unavoidable Delays, and include delays that otherwise would be considered Unavoidable Delays but that:

- (A) Could have been avoided by the exercise of care, prudence, foresight, and diligence on the part of the CM/GC or its Subcontractors.
- (B) Affect only a portion of the Work and do not necessarily prevent or delay the prosecution of other parts of the Work nor the completion of the whole Work within the Contract Time.
- (C) Do not impact activities on the accepted critical path schedule.
- (D) Are associated with the reasonable interference of other contractors engaged by the City that do not necessarily prevent the completion of the whole Work within the Contract Time.

(2) Unavoidable Delays include delays other than Avoidable Delays that are:

- (A) Caused by any actions of the City, City's Authorized Representative, or any other employee or agent of the City, or by separate contractor engaged by the City.
- (B) Caused by any site conditions which differ materially from what was represented in the Contract Documents or from conditions that would normally be expected to exist and be inherent to the construction activities defined in the Contract Documents. The CM/GC shall notify the City's Authorized Representative immediately of differing site conditions before the area has been disturbed. The City's Authorized Representative will investigate the area and make a determination as to whether or not the conditions differ materially from either the conditions stated in the Contract Documents or those which could reasonably be expected in execution of this particular Contract. If CM/GC and the City's Authorized Representative agree that a differing site condition exists, any additional compensation or additional Contract Time will be determined based on the process set forth in Section D.1.5 for Change Order Work. If the City's Authorized Representative disagrees that a differing site condition exists and denies CM/GC's request for additional compensation or Contract Time, CM/GC may proceed to file a Claim under Section D.3, Claims Review Process.
- (C) Caused by Force Majeure acts, events or occurrences that could not have been avoided by the exercise of care, prudence, foresight, and diligence on the part of the CM/GC or its Subcontractors.
- (D) Caused by adverse weather conditions. Any adverse weather conditions must be substantiated by documentary evidence that weather conditions were abnormal for the specific time period claimed, could not have been anticipated by the CM/GC, and adversely impacted the project in a manner that could not be avoided by rescheduling the Work or by implementing measures to protect against the weather so that the Work could proceed. A rain, windstorm, high water, or other natural phenomenon for the specific locality of the Work, which might reasonably have been anticipated from the previous 10-year historical records of the general locality of the Work, shall not be construed as abnormal. The parties agree that rainfall greater than the following levels cannot be reasonably anticipated:
  - i. Daily rainfall equal to, or greater than, 0.50 inch during a month when the monthly rainfall exceeds the

normal monthly average by twenty-five percent (25 %) or more.

- ii. daily rainfall equal to, or greater than, 0.75 inch at any time.

The Office of the Environmental Data Service of the National Oceanic and Atmospheric Administration of the U.S. Department of Commerce nearest the Project site shall be considered the official agency of record for weather information.

(3) Concurrent Delays occur when two Avoidable or two Unavoidable Delays occur within a time frame where all or part of their durations overlap. The cumulative effect of the overlapping delays results in a total impact to the Project duration less than or equal to the cumulative sum of the individual delays or greater than or equal to the longer of the two Delays.

(4) Offsetting Delays occur when an Avoidable and an Unavoidable Delays occur within a time frame where all or part of their durations overlap. In some cases, Offsetting Delays occur where overlapping delays are incurred by both the City and the CM/GC, where the period of overlapping time negates any impact to the Project from the delays during that time frame. The impact of the overlap is that the total impact of the delays is lessened to due to the delays happening at, to some extent, the same time and therefore the project is only impacted once. The overall impact of Offsetting Delays is equal or less than the impact of the longer of the two delays.

D.2.2 Except as otherwise provided in ORS 279C.315, CM/GC shall not be entitled to additional compensation or additional Contract Time for Avoidable Delays.

D.2.3 In the event of Unavoidable Delays, based on principles of equitable adjustment, CM/GC may be entitled to the following:

(1) CM/GC may be entitled to additional compensation or additional Contract Time, or both, for Unavoidable Delays described in Section D.2.1.2 (1) and (2).

(2) CM/GC may be entitled to additional Contract Time for Unavoidable Delays described in Section D.2.1.2(3) and (4).

(3) In the event of any requests for additional compensation or additional Contract Time, or both, as applicable, arising under this Section D.2.3 for Unavoidable Delays, other than requests for additional compensation or additional Contract Time for differing site conditions for which a review process is established under Section D.2.1.2 (2), CM/GC shall submit a written notification of the delay to the City's Authorized Representative within two (2) Days of the occurrence of the cause of the delay. This written notification shall state the cause of the potential delay, the project components impacted by the delay, and the anticipated additional Contract Time or the additional compensation, or both, as applicable, resulting from the delay. Within seven (7) Days after the cause of the delay has been mitigated, or in no case more than thirty (30) Days after the initial written notification, the CM/GC shall submit to the City's Authorized Representative, a complete and detailed request for additional compensation or additional Contract Time, or both, as applicable, resulting from the delay. If the City's Authorized Representative denies CM/GC's request for additional compensation or adjustment of Contract Time, the CM/GC may proceed to file a Claim under Section D.3, Claims Review Process.

(4) If CM/GC does not timely submit the notices required under this Section D.2., then unless otherwise prohibited by law, CM/GC's Claim shall be barred.

D.2.4 When submitting a request for compensation under D.2.3, CM/GC and the City shall take into account the cumulative impacts of Concurrent and Offsetting Delays that occurs within the same time frame the request for compensation covers.

D.2.5 All requests for compensation under this section shall require the CM/GC to submit a detailed Time Impact Analysis as outlined in the Specifications.

### **D.3 CLAIMS REVIEW PROCESS**

D.3.1 All CM/GC Claims shall be referred to the City's Authorized Representative for review. CM/GC's Claims, including Claims for additional compensation or additional Contract Time, shall be submitted in writing by CM/GC to the City's Authorized Representative within five (5) business days after a denial of CM/GC's initial request for an adjustment of Contract terms, payment of money, extension of Contract Time or other relief, provided that such initial request has been submitted in accordance with the requirements and within the time limits established in these General Conditions. Within twenty (20) business days after the initial Claim, CM/GC shall submit to the City's Authorized Representative, a complete and



detailed description of the Claim (the "Detailed Notice") that includes all information required by Section D.3.2. Unless the Claim is made in accordance with these time requirements, it shall be waived.

- D.3.2 The Detailed Notice of the Claim shall be submitted in writing by CM/GC and shall include a detailed, factual statement of the basis of the Claim, pertinent dates, Contract provisions which support or allow the Claim, reference to or copies of any documents which support the Claim, the dollar value of the Claim, and the Contract Time extension requested for the Claim. If the Claim involves Work to be completed by Subcontractors, the CM/GC will analyze and evaluate the merits of the Subcontractor claim prior to forwarding it and that analysis and evaluation to the City's Authorized Representative. The City's Authorized Representative and the City will not consider direct claims from Subs, suppliers, manufacturers, or others not a party to this Contract. CM/GC agrees that it will make no agreement, covenant, or assignment, nor will it commit any other act that will permit or assist any Subcontractor, supplier, manufacturer, or other to directly or indirectly make a claim against City.
- D.3.3 The City's Authorized Representative will review all Claims and take one or more of the following preliminary actions within ten (10) business days of receipt of the Detailed Notice of a Claim: (1) request additional supporting information from the CM/GC; (2) inform the CM/GC and City in writing of the time required for adequate review and response; (3) reject the Claim in whole or in part and identify the reasons for rejection; (4) based on principles of equitable adjustment, recommend approval of all or part of the Claim; or (5) propose an alternate resolution.
- D.3.4 The City's Authorized Representative's decision shall be final and binding on the CM/GC unless appealed by written notice to the City within fifteen (15) business days of receipt of the decision. The CM/GC must present written documentation supporting the Claim within fifteen (15) business days of the notice of appeal. After receiving the appeal documentation, the City shall review the materials and render a decision within twenty (20) business days after receiving the appeal documents.
- D.3.5 The decision of the City shall be final and binding unless the CM/GC delivers to the City its requests for mediation, which shall be a non-binding process, within ten (10) business days of the date of the City's decision. The mediation process will be considered to have commenced as of the date the CM/GC delivers the request. Both parties acknowledge and agree that participation in mediation is a prerequisite to commencement of litigation of any disputes relating to the Contract. Both parties further agree to exercise their best efforts in good faith to resolve all disputes within forty (40) business days of the commencement of the mediation through the mediation process set forth herein.
- In the event that a lawsuit must be filed within this forty (40) day period in order to preserve a cause of action, the parties agree that notwithstanding the filing, they shall proceed diligently with the mediation to its conclusion prior to actively prosecuting the lawsuit, and shall seek from the Court in which the lawsuit is pending such stays or extensions, including the filing of an answer, as may be necessary to facilitate the mediation process. Further, in the event settlements are reached on any issues through mediation, the parties agree to promptly submit the appropriate motions and orders documenting the settlement to the Court for its signature and filing.
- D.3.6 The mediator shall be an individual mutually acceptable to both parties, but in the absence of agreement each party shall select a temporary mediator and the temporary mediators shall jointly select the permanent mediator. Each party shall pay its own costs for the time and effort involved in mediation. The cost of the mediator shall be split equally between the two parties. Both parties agree to exercise their best effort in good faith to resolve all disputes in mediation. Participation in mediation is a mandatory requirement of both the City and the CM/GC. The schedule, time and place for mediation will be mutually acceptable, or, failing mutual agreement, shall be as established by the mediator. The parties agree to comply with City's administrative rules governing the confidentiality of mediation, if any, and shall execute all necessary documents to give effect to such confidentiality rules. In any event, the parties shall not subpoena the mediator or otherwise require the mediator to produce records, notes or work product, or to testify in any future proceedings as to information disclosed or representations made in the course of mediation, except to the extent disclosure is required by law.
- D.3.7 Unless otherwise directed by City's Authorized Representative, CM/GC shall proceed with the Work while any Claim of CM/GC is pending, including a Claim for additional compensation or additional Contract Time resulting from Change Order Work. Regardless of the review period or the final decision of the City's Authorized Representative, the CM/GC shall continue to diligently pursue the Work as identified in the Contract Documents. In no case is the CM/GC justified or allowed to cease Work without a written stop work order from the City or City's Authorized Representative.

## **SECTION E PAYMENTS**

## **E.1 SCHEDULE OF VALUES**

The CM/GC shall submit, at least ten (10) business days prior to submission of its first application for progress payment, a schedule of values ("Schedule of Values") for the contracted Work, for the City's review and approval. This schedule will provide a breakdown of values for the contracted Work and will be the basis for progress payments. The breakdown will demonstrate reasonable, identifiable, and measurable components of the Work. Unless objected to by the City's Authorized Representative, this schedule shall be used as the basis for reviewing CM/GC's applications for payment. If objected to by City's Authorized Representative, CM/GC shall revise the schedule of values and resubmit the same for approval of City's Authorized Representative.

E.1.1 The Schedule of Values shall be of sufficient detail and organization to interface with the City's accounting and funding structure.

## **E.2 APPLICATIONS FOR PAYMENT**

E.2.1 City shall make progress payments on the Contract monthly as Work progresses. Prior to the submission of each monthly Application for Payment, CM/GC shall submit and obtain City's approval of a progress schedule update. Payments shall be based upon estimates of Work completed, as indicated in the approved progress schedule update, and the Schedule of Values. All payments shall be approved by the City's Authorized Representative. A progress payment shall not be considered acceptance or approval of any Work or waiver of any defects therein. City shall pay to CM/GC interest on the progress payment, not including retainage, due the CM/GC. The interest shall commence thirty (30) Calendar Days after the receipt of invoice ("application for payment") from the CM/GC or fifteen (15) Calendar Days after the payment is approved by the City's Authorized Representative, whichever is the earlier date. The rate of interest shall be as provided under Oregon law. Notwithstanding the foregoing, in instances when an application for payment is filled out incorrectly, or when there is any defect or impropriety in any submitted application or when there is a good faith dispute, City shall so notify the CM/GC within ten (10) business days stating the reason or reasons the application for payment is defective or improper or the reasons for the dispute. A defective or improper application for payment, if corrected by the CM/GC within five (5) business days of being notified by the City, shall not cause a payment to be made later than specified in this section unless interest is also paid. Accrual of interest will be postponed when payment on the principal is delayed because of disagreement between the City and the CM/GC.

E.2.2 CM/GC shall submit to the City's Authorized Representative, an application for each payment and, if required, receipts or other vouchers showing payments for materials and labor, including payments to Subcontractors. Applications for payment shall include all information required by City or City's Authorized representative and shall be supplemented with all additional information requested before the request for payment will be processed. CM/GC shall include, in its application for payment, a schedule of the percentages of the various parts of the Work completed, based on the Schedule of Values which shall aggregate to the payment application total.

E.2.3 Generally, applications for payment will be accepted only for materials that have been installed. Under special conditions, applications for payment for stored materials will be accepted at City's sole discretion. Such a payment, if made, will be subject to the following conditions:

(1) The request for stored material shall be submitted at least twenty five (25) business days in advance of the application for payment on which it appears. Applications for payment shall be entertained for major equipment, components or expenditures only.

(2) The CM/GC shall submit applications for payment showing the quantity and cost of the material stored.

(3) The material shall be stored in a bonded warehouse and City's Authorized Representative shall be granted the right to access the material for the purpose of removal or inspection at any time during the Contract Period.

(4) The CM/GC shall name the City as co-insured on the insurance policy covering the full value of the property while in the care and custody of the CM/GC until it is installed. A certificate noting this coverage shall be issued to the City.

(5) Payments shall be made for materials only. The submitted amount of the application for payment shall be reduced by the cost of transportation and for the cost of an inspector to check the delivery at out of town storage sites. The cost of said inspection shall be borne solely by the CM/GC.

(6) Within fifty (50) Business Days of the application for payment, the CM/GC shall submit evidence of payment covering the material stored.

(7) Payment for stored materials shall in no way indicate acceptance of the materials or waive any rights under this Contract for the rejection of the Work or materials not in conformance with the Contract Documents.

(8) All required documentation must be submitted with the respective application for payment.

E.2.4 Notwithstanding other parts of this Contract, the City reserves the right to withhold all or part of a payment, or may nullify in whole or part any payment previously made, to such extent as may be necessary in the City's opinion to protect the City from loss including but not limited to:

(1) Work that is defective and not remedied, or that has been demonstrated or identified as failing to conform with the Contract Documents,

(2) third party claims or fines, including governing agency or regulatory entity, filed or evidence reasonably indicating that such claims will likely be filed unless security acceptable to the City is provided by the CM/GC;

(3) failure of the CM/GC to make payments properly to Subcontractors or for labor, materials or equipment (in which case City may issue checks made payable jointly to City and such unpaid persons under this provision, or directly to Subcontractors and suppliers at any level under Section C.3.2.1);

(4) reasonable evidence that the Work cannot be completed for the unpaid balance of the Contract Price;

(5) damage to the City or another contractor;

(6) reasonable evidence that the Work will not be completed within the Contract Time required by the Contract, and that the unpaid balance would not be adequate to cover actual or liquidated damages for the anticipated delay;

(7) failure to carry out the Work in accordance with the Contract Documents;

(8) failure to provide or obtain City's approval of a monthly progress schedule update;

(9) failure to maintain updated Record Documents; or

(10) Failure to provide certified payroll reports as required elsewhere in this Contract.

E.2.5 Subject to the provisions of the Contract Documents, the amount of each progress payment shall be computed as follows:

(1) Take that portion of the Contract Price properly allocable to completed Work as determined by multiplying the percentage completion of each portion of the Work by the share of the total Contract Price allocated to that portion of the Work in the Schedule of Values, less retainage as provided in Section E.5. Pending final determination of cost to the City of changes in the Work, amounts not in the dispute may be included even though the Contract Price has not yet been adjusted by Change Order;

(2) Add that portion of the Contract Price properly allocable to materials and equipment delivered and suitably stored at the site for subsequent incorporation in the completed construction (or, if approved in advance by the City pursuant to Section E.2.3, suitably stored off the site at a location agreed upon in writing), less retainage as provided in Section E.5;

(3) Subtract the aggregate of previous payments made by the City; and

(4) Subtract any amounts for which the City's Authorized Representative has withheld or nullified payment as provided in the Contract Documents.

E.2.6 CM/GC's applications for payment may not include requests for payment for portions of the Work for which the CM/GC does not intend to pay to a Subcontractor or material supplier.

E.2.7 The CM/GC warrants to City that title to all Work covered by an application for payment will pass to the City no later than the time of payment. The CM/GC further warrants that upon submittal of an application for payment all Work for which payments are received from the City shall be free and clear of liens, claims, security interests or encumbrances in favor of the CM/GC, Subcontractors, material suppliers, or other persons or entities making a claim by reason of having provided labor, materials and equipment relating to the Work.

E.2.8 If CM/GC disputes any determination by City's Authorized Representative with regard to any application for payment, CM/GC nevertheless shall continue to prosecute expeditiously the Work. No payment made hereunder shall be or be construed to be final acceptance or approval of that portion of the Work to which such partial payment relates or shall relieve CM/GC of any of its obligations hereunder.

### **E.3 PAYROLL CERTIFICATION REQUIREMENT**

Payroll certification is required before payments are made on the Contract. Refer to Section C.2 for this information.

### **E.4 RESERVED**

### **E.5 RETAINAGE**

E.5.1 Retainage shall be withheld and released in accordance with ORS 279C.550 to 279C.580:

(1) City may reserve as retainage from any progress payment an amount not to exceed five percent (5%) of the payment. As Work progresses, City may reduce the amount of the retainage and may eliminate retainage on any remaining monthly Contract payments after 50 percent of the Work under the Contract is completed if, in the City's sole opinion, such Work is progressing satisfactorily. Elimination or reduction of retainage shall be allowed only upon written application by the CM/GC, which application shall include written approval of CM/GC's surety; except that when the Work is 97-1/2 percent completed the City may, at its discretion and without application by the CM/GC, reduce the retained amount to 100 percent of the value of the Work remaining to be done. Upon receipt of written application by the CM/GC, City shall respond in writing within a reasonable time.

(2) In accordance with ORS 279C.560 and any applicable administrative rules, CM/GC may request in writing:

(A) to be paid amounts which would otherwise have been retained from progress payments where CM/GC has deposited acceptable bonds and securities of equal value with City or in a custodial account or other mutually-agreed account satisfactory to City, with an approved bank or trust company to be held in lieu of the cash retainage for the benefit of City;

(B) that retainage be deposited in an interest bearing account, established through the State Treasurer for state agencies, in a bank, savings bank, trust company or savings association for the benefit of City, with earnings from such account accruing to the CM/GC; or

(C) that the City allow CM/GC to deposit a surety bond for the benefit of City, in a form acceptable to City, in lieu of all or a portion of funds retained, or to be retained. Such bond and any proceeds therefrom shall be made subject to all claims and liens in the manner and priority as set forth for retainage under



(D) Where the City has accepted the CM/GC's election of option (A) or (B), City may recover from CM/GC any additional costs incurred through such election by reducing CM/GC's final payment. Where the City has agreed to CM/GC's request for option (C), CM/GC shall accept like bonds from Subcontractors and suppliers on the project from which CM/GC has required retainages.

(3) The retainage held by City shall be included in and paid to the CM/GC as part of the final payment of the Contract Price. The City shall pay to CM/GC interest at the rate of one and one-half percent per month on the final payment due CM/GC, interest to commence thirty (30) Calendar Days after the Work under the Contract has been completed, accepted and invoiced in accordance with the terms of this Agreement. CM/GC shall notify City in writing when the CM/GC considers the Work complete and City shall, within fifteen (15) Calendar Days after receiving the written notice, either accept the Work or notify the CM/GC of Work yet to be performed on the Contract. If City does not within the time allowed notify the CM/GC of Work yet to be performed to fulfill contractual obligations, the interest provided by this subsection shall commence to run thirty (30) Calendar Days after the end of the 15-Day period.

(4) In accordance with the provisions of reference ORS 279C.560, City shall reduce the amount of the retainage if the CM/GC notifies the controller of the City that the CM/GC has deposited in an escrow account with a bank or trust company, in a manner authorized by the City's Authorized Representative, bonds and securities of equal value of a kind approved by the City's Authorized Representative.

E.5.2 As provided in subsections C.2.2 and C.2.3, retainage in the amount of 25% of amounts earned shall be withheld and released in accordance with ORS 279C.845(7) when the CM/GC fails to file certified statements as required by section C.2.1 shall be in addition to any retainage withheld as a part of this Section E.5.

## **E.6 FINAL PAYMENT**

E.6.1 Upon completion of all the Work under this Contract, the CM/GC shall notify the City's Authorized Representative, in writing, that CM/GC has completed CM/GC's part of the Contract and shall request final payment. Upon receipt of such notice the City's Authorized Representative will inspect the Work, and if acceptable, submit to the City a recommendation as to acceptance of the completed Work and as to the final estimate of the amount due the CM/GC. If the Work is not acceptable, City will notify CM/GC within fifteen (15) Days of CM/GC's request for final payment. Upon approval of this final estimate by the City and compliance by the CM/GC with provisions in Section K. 3 AFFIDAVIT/RELEASE OF LIENS AND CLAIMS, and other provisions as may be applicable, the City shall pay to the CM/GC all monies due under the provisions of these Contract Documents.

E.6.2 Neither final payment nor any remaining retained percentage shall become due until the CM/GC submits to the City's Authorized Representative, (1) a notarized affidavit/release of liens and claims in a form satisfactory to City that states that payrolls, bills for materials and equipment, and other indebtedness connected with the Work for which the City or the City's property might be responsible or encumbered (less amounts withheld by City) have been paid or otherwise satisfied,(2) a certificate evidencing that insurance required by the Contract Documents to remain in force after final payment is currently in effect and will not be canceled or allowed to expire until at least thirty (30) Days' prior written notice has been given to the City, (3) a written statement that the CM/GC knows of no substantial reason that the insurance will not be renewable to cover the period required by the Contract Documents, (4) consent of surety, if any, to final payment and (5), if required by the City, other data establishing payment or satisfaction of obligations, such as receipts, releases and waivers of liens, claims, security interests or encumbrances arising out of the Contract, to the extent and in such form as may be designated by the City. If a Subcontractor refuses to furnish a release or waiver required by the City, the CM/GC may furnish a bond satisfactory to the City to indemnify the City against such lien. If such lien remains unsatisfied after payments are made, the CM/GC shall refund to the City all money that the City may be compelled to pay in discharging such lien, including all costs and reasonable attorneys' fees.

E.6.3 Acceptance of final payment by the CM/GC, a Subcontractor or material supplier shall constitute a waiver of claims by that payee except those previously made in writing and identified by that payee as unsettled at the time of final application for payment.

**SECTION F**  
**JOB SITE CONDITIONS**

**F.1 USE OF PREMISES**

CM/GC shall confine equipment, storage of materials and operation of Work to the limits indicated by Contract Documents, law, ordinances, permits or directions of the City's Authorized Representative. CM/GC shall follow any and all instructions or requirements regarding the use of premises given by the City's Authorized Representative. CM/GC shall not use or disturb City's property, materials or documents except for the purpose of responding to City's request for proposal or invitation to bid or pursuant to completion of the Work under this Contract. CM/GC shall treat all documents as confidential and shall not disclose such documents without approval from City. Any unauthorized disclosure of documents or removal of City property will be deemed a substantial breach of this Contract. CM/GC shall bear sole responsibility for any liability including, but not limited to, attorneys' fees, resulting from any action or suit brought against City as a result of CM/GC's willful or negligent release of information, documents, or property contained in or on City property. City hereby deems all information, documents, and property contained in or on City property privileged and confidential.

**F.2 PROTECTION OF WORKERS, PROPERTY, AND THE PUBLIC**

- F.2.1 CM/GC shall maintain continuous and adequate protection of all of the Work from damage, and shall protect the City's Authorized Representative, City's workers, school staff, administrators, students, general public and property from injury or loss arising in connection with this Contract. CM/GC shall remedy acceptably to the City, any damage, injury, or loss, except such as may be directly due to errors in the Contract Documents or caused by authorized representatives or personnel of the City. CM/GC shall adequately protect adjacent property as provided by law and the Contract Documents. If any person suffers physical injury or property damage arising from the Work, regardless of the cause, the party shall immediately give notice of such injury or damage, whether or not insured, to City and CM/GC with sufficient detail to enable City and any other party affected to investigate the matter.
- F.2.2 CM/GC shall take all necessary precautions for the safety of all personnel on the job site, and shall comply with the Contract Documents and all applicable provisions of federal, state and municipal safety laws and building codes to prevent accidents or injury to persons on, about or adjacent to the premises where the Work is being performed. CM/GC shall erect and properly maintain at all times, as required by the conditions and progress of the Work, all necessary safeguards for protection of workers and the public against any hazards created by construction. CM/GC shall designate a responsible employee or associate on the Work site, whose duty shall be the prevention of accidents. The name and position of the person designated shall be reported to the City's Authorized Representative. The City's Authorized Representative has no responsibility for Work site safety. Work site safety is solely the responsibility of the CM/GC.
- F.2.3 CM/GC shall not enter upon private property without first obtaining permission from the property owner or its duly authorized representative. CM/GC shall be responsible for the preservation of all public and private property along and adjacent to the Work contemplated under the Contract and shall use every precaution necessary to prevent damage thereto. In the event the CM/GC damages any property, the CM/GC shall at once notify the property owner and make, or arrange to make, full restitution. CM/GC shall report, immediately in writing, to the City's Authorized Representative, all pertinent facts relating to such property damage and the ultimate disposition of the claim for damage.
- F.2.4 CM/GC is responsible for protection of adjacent work areas including impacts brought about by activities, equipment, labor, utilities, and materials on the site.
- F.2.5 CM/GC shall at all times direct its activities in such a manner as to minimize adverse effects on the environment. Handling of all materials will be conducted so no release will occur that may pollute or become hazardous.
- F.2.6 In an emergency affecting the safety of life or of the Work or of adjoining property, the CM/GC, without special instruction or authorization from the City's Authorized Representative, shall act reasonably to prevent threatened loss or injury, and shall so act, without appeal, if instructed by the City's Authorized Representative. Any compensation claimed by the CM/GC on account of emergency work shall be determined in accordance with Section D.