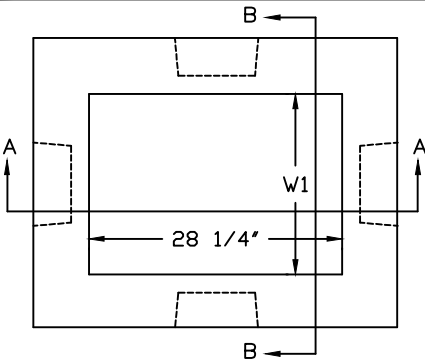


INLET TYPE	W	W ₁	X
G-1	2'-8 7/8"	1'-8 7/8"	10 9/16"
G-2	3'-3 3/8"	2' 3 3/8"	16 9/16"

NOTE: G-2 CATCH BASIN IS STANDARD. USE G-1 WITH ENGINEER'S APPROVAL ONLY.



OPTIONAL:
INSTALL 3" WEEP
HOLES WITH FIELD INSTALLED
MESH SCREEN FOR SUB-
GRADE DRAINAGE

TOP VIEW

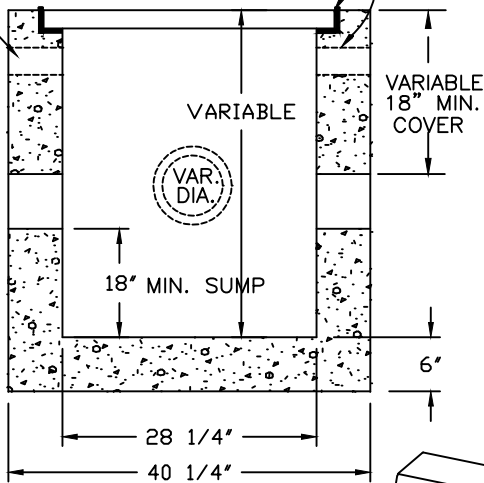
STEEL FRAME CAST IN
TOP SLAB OF BASIN (IF
TOP SLAB IS CAST-IN-PLACE)

NORMAL PAVEMENT
SLOPE

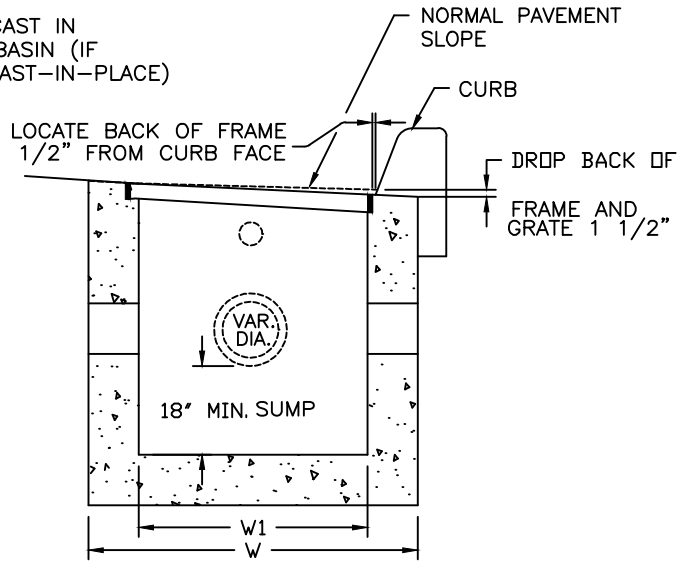
CURB

LOCATE BACK OF FRAME
1/2" FROM CURB FACE

DROP BACK OF
FRAME AND
GRATE 1 1/2"



SECTION A-A



SECTION B-B

DROP BACK OF FRAME
AND GRATE 1 1/2" BELOW
NORMAL GUTTER FLOW LINE

DEPRESSED GUTTER
FLOW LINE

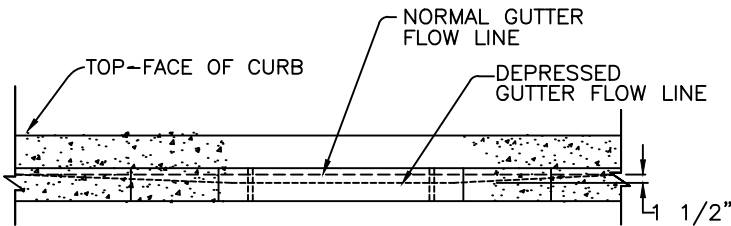
3" TRANSITION TYP.

MATCH NORMAL PAVEMENT GRADE AT
CATCH BASIN TOP SLAB

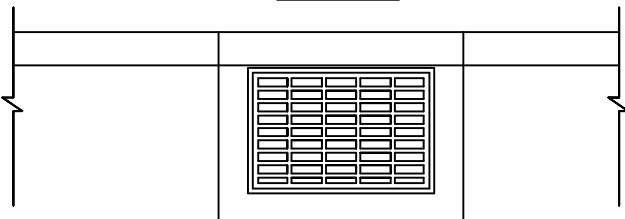
40 1/4"

NOTES

1. 6'-0" MAX. DISTANCE FROM RIM TO SUMP.
2. CONCRETE STRENGTH SHALL BE 3000 PSI.
3. PRECAST BASE WALLS SHALL BE MIN. 4" THICK. CAST-IN-PLACE BASE WALLS SHALL BE 6" THICK.



FRONT VIEW



PLAN VIEW

CITY OF SANDY

**TYPE G-1,
G-2 CATCH BASIN
WITH SUMP**

DATE:
MARCH 2004

DRAWING NO.
305C