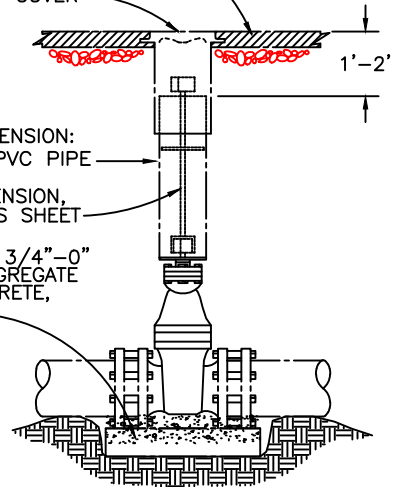


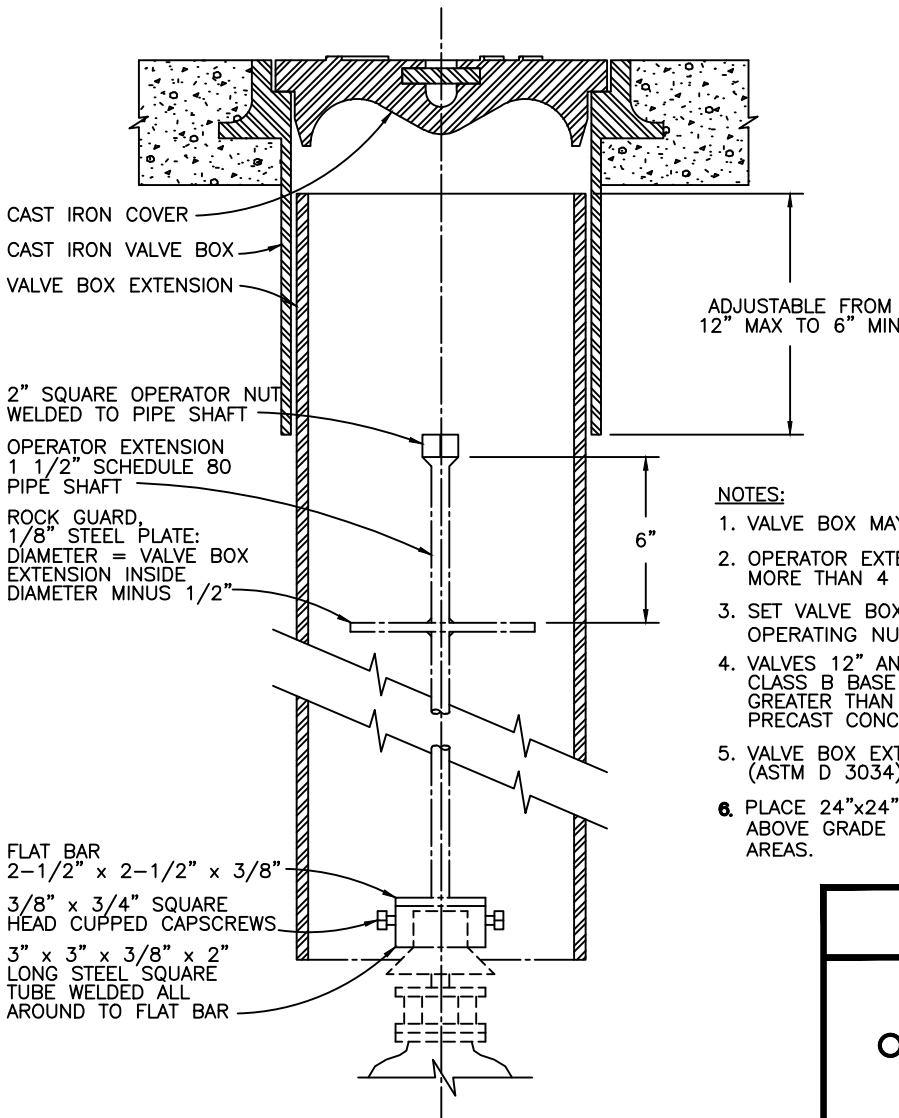
COVER PLAN

FINISH GRADE (SEE NOTE 6)

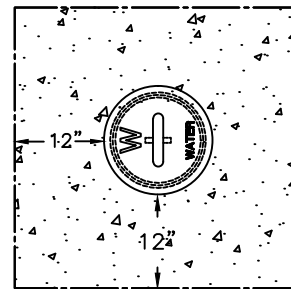
RICH 926 OR APPROVED EQUAL
SLIDING TYPE DUCTILE IRON
VALVE BOX AND COVER



**VALVE BOX
ASSEMBLY DETAIL**



VALVE BOX EXTENSION SECTION



CONCRETE COLLAR
REQUIRED IN UNPAVED
AREAS—SEE NOTE #6

NOTES:

1. VALVE BOX MAY NOT REST ON OPERATING ASSEMBLY.
2. OPERATOR EXTENSION REQUIRED WHEN VALVE NUT IS MORE THAN 4 FEET FROM FINISH GRADE.
3. SET VALVE BOX PLUMB CENTERED ON AXIS OF OPERATING NUT.
4. VALVES 12" AND SMALLER SHALL BE PROVIDED WITH CLASS B BASE ON UNDISTURBED GROUND. VALVES GREATER THAN 12" SHALL BE INSTALLED ON PRECAST CONCRETE PIER BLOCK.
5. VALVE BOX EXTENSION SHALL BE 6" DIA. PVC PIPE (ASTM D 3034).
6. PLACE 24"x24"x6" CONCRETE COLLAR SET 6" ABOVE GRADE AROUND VALVE BOX IN UNPAVED AREAS.

CITY OF SANDY

**VALVE BOX AND
OPERATOR EXTENSION
ASSEMBLY**

DATE:
MARCH 2004

DRAWING NO.
403