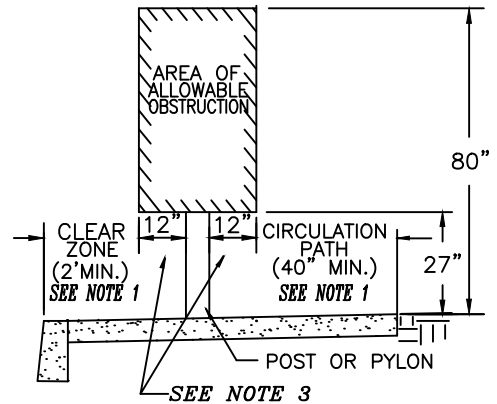
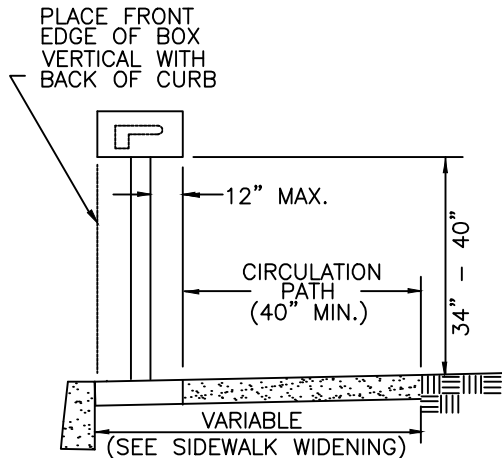


JOINTS IN SIDEWALK TO MATCH JOINT IN CURB

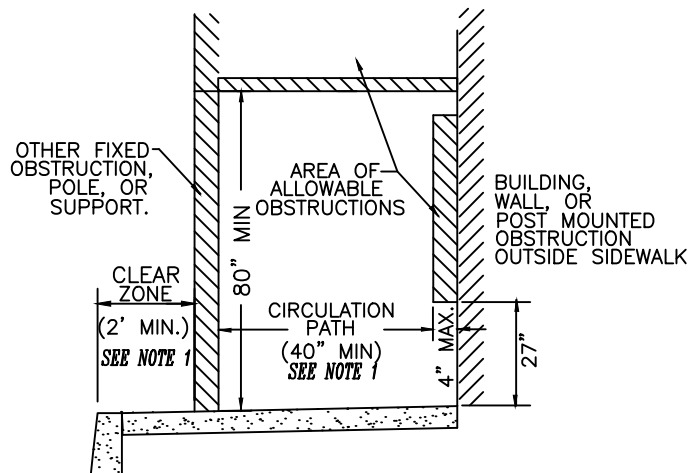
**REQUIRED SIDEWALK WIDENING
AROUND OBSTRUCTIONS**



**POST MOUNTED OBSTRUCTION
WITHIN SIDEWALK**



TYPICAL MAILBOX INSTALLATION



**PROTRUDING OBJECTS
AND OTHER OBSTRUCTIONS**

NOTES:

- 1) CLEAR ZONE AND THE CIRCULATION PATH MAY BE COMBINED PROVIDING A 5 FOOT MINIMUM SIDEWALK WIDTH IS MAINTAINED.
- 2) DEFLECT SIDEWALK AROUND AREA OF OBSTRUCTION WHEN OVERHANGS EXCEED ALLOWABLE LIMITS.
- 3) WHEN OBSTRUCTIONS ARE LOCATED WITHIN THE SIDEWALK AREA THE DIMENSION APPLIES IN ALL DIRECTIONS.
- 4) INSTALL FULL DEPTH EXPANSION JOINT AROUND ALL OBSTRUCTIONS PENETRATING SIDEWALK SURFACE.
- 5) ON CUL-DE-SACS, PLACE FRONT EDGE OF MAILBOX 6 INCHES BEHIND BACK OF CURB.
- 6) CORE DRILL (4" MIN. DIA.) OR SAW-CUT HOLE FOR POST OR USE MANUFACTURED PLATE WITH CONCRETE ANCHORS IN EXISTING CURB-TIGHT SIDEWALKS.
- 8) USE 6" PVC PIPE SLEEVE FOR POST IN NEW CURB-TIGHT SIDEWALK CONSTRUCTION.
- 9) EXCEPTIONS TO THE REQUIREMENTS IN THIS DRAWING MUST BE APPROVED BY THE ENGINEER AND MUST COMPLY WITH AMERICANS WITH DISABILITY ACT.

CITY OF SANDY	
SIDEWALK DETAILS: OBSTRUCTIONS AND PROTRUDING OBJECTS	
DATE: SEPT 1997	DRAWING NO. 205-A