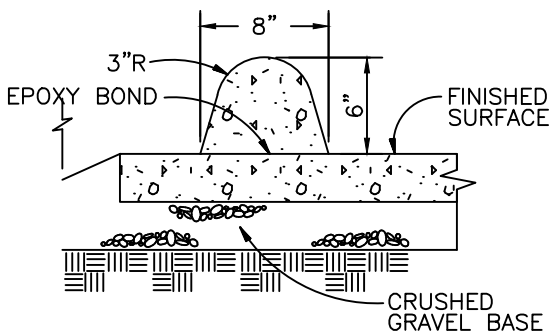
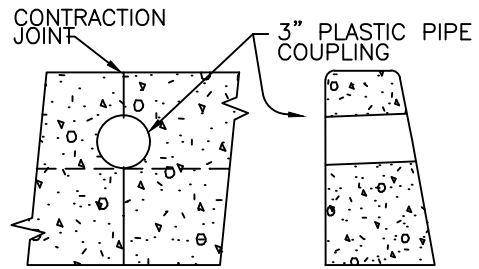
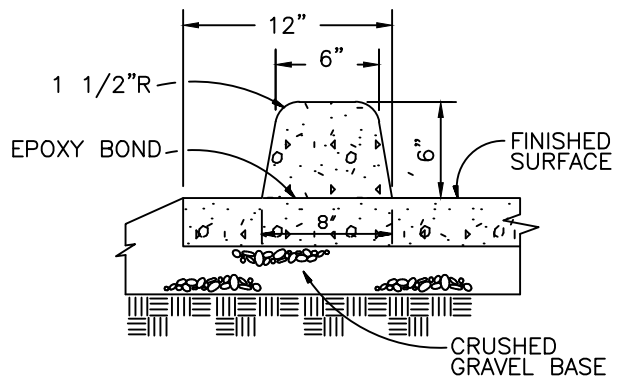


TYPE 'C' CURB



EXTRUDED AC BONDED CURB



EXTRUDED CONCRETE BONDED CURB

NOTES:

1. ISOLATION JOINTS SHALL BE PLACED ONLY AS SPECIFIED.
2. CONTRACTION JOINTS SHALL BE PLACED AT 15' INTERVALS AND SHALL EXTEND AT LEAST 50% THROUGH THE CURB.
3. A CONTRACTION JOINT SHALL BE PLACED ALONG AND OVER WEEP HOLE THROUGH THE CURB AND THROUGH THE SIDEWALK.
4. WHEN SIDEWALKS ARE CONSTRUCTED, EXTEND 3" PIPE TO BACK OF SIDEWALK AND INSTALL COUPLING.

CITY OF SANDY

**CURB
AND WEEPHOLE**

DATE:

SEPT 1997

DRAWING NO.

203