

# City of Sandy

## Agenda

### Parks & Trails Advisory Board Meeting

Meeting Location: Virtual Via Zoom  
Meeting Date: Wednesday, June 9, 2021

Meeting Time: 7:00 PM



#### 1. MEETING FORMAT NOTICE

Meeting Format Notice:

**The Parks and Trails Advisory Board will conduct this meeting electronically using the Zoom video conference platform.**

Members of the public may listen, view, and/or participate in this meeting using Zoom.

Using Zoom is free of charge. See the instructions below:

- To login to the electronic meeting online using your computer, [click this link](#):
- **Note a passcode may be required: 436529**
- If you would rather access the meeting via telephone, dial 1-669-900-6833. When prompted, enter the following meeting number: 812 5464 2829
- If you do not have access to a computer or telephone and would like to take part in the meeting, please contact the Sandy Community Center (503-668-5569) by June 7th and arrangements will be made to facilitate your participation.

#### 2. ROLL CALL

#### 3. PUBLIC COMMENT

#### 4. CONSENT AGENDA

- 4.1. Meeting Minutes 3 - 54  
[Parks & Trails Advisory Board - 12 May 2021 - Minutes - Pdf](#)  
[Parks & Trails Advisory Board - 12 May 2021 - Minutes - Html](#)

#### 5. CHANGES TO THE AGENDA

#### 6. NEW BUSINESS

- 6.1. [Ten Eyck Rim Development](#) 55 - 56  
[21-015 sub tree ten eyck rim subdivision vicinity map](#)  
[Staff Report Ten Eyck Rim](#)
- 6.2. Bee City Information - Shelley Denison
- 6.3. Sustainable Park Design Discussion
- 6.4. Board Elections 57  
[Staff Report Board Elections](#)

**7. OLD BUSINESS**

- 7.1. Tickle Creek Trail

**8. STAFF UPDATES**

**9. ADJOURN**



**MINUTES**  
**Parks & Trails Advisory Board Meeting**  
**Wednesday, May 12, 2021 City Hall-**  
**Council Chambers, 39250 Pioneer Blvd.,**  
**Sandy, Oregon 97055 7:00 PM**

**BOARD MEMBERS PRESENT:** Don Robertson, Board Member, Makoto Lane, Board Member, David Breames, Board Member, Will Toogood, Board Member, Rachel Stephens, Board Member, and Mary Casey, Board Member

**BOARD MEMBERS ABSENT:** Sarah Schrodetz, Board Member

**STAFF PRESENT:** Sarah Richardson, Community Services

**MEDIA PRESENT:**

**1. Meeting Format**

Meeting Format Notice:

**The Parks and Trails Advisory Board will conduct this meeting electronically using the Zoom video conference platform.**

Members of the public may listen, view, and/or participate in this meeting using Zoom.

Using Zoom is free of charge. See the instructions below:

- To login to the electronic meeting online using your computer, [click this link](#):
- **Note a passcode may be required:** 663511
- If you would rather access the meeting via telephone, dial 1-669-900-6833. When prompted, enter the following meeting number: 838 6201 9585
- If you do not have access to a computer or telephone and would like to take part in the meeting, please contact the Sandy Community Center (503-668-5569) by May 10th and arrangements will be made to facilitate your participation.

**2. Roll Call**

**3. Public Comment**

Eric Walland attended to update the board on at-large dogs at Bornstedt Park.

Feels there has been no improvement at the park, and dogs are now being tied to trees with long lines.

Feels issue is getting worse with the nice weather, and is a livability issue.

Don Robertson noted this item is on the agenda and the discussion will continue at that point in the agenda.

**4. Consent Agenda**

4.1. Meeting Minutes

**5. Changes to the Agenda**

**6. New Business**

6.1. Parks and Trails Master Plan Update

8 - 45

Tracy Johnson from Environmental Science Associates (ESA) attended to do a final review of the Draft Parks and Trails Master Plan update. Slides from the presentation are attached.

Tracy Johnson noted the questions forwarded from Board members after the last meeting and said they will be incorporated.

Will Toogood asked about Volunteer Coordinators. Wondering if there was a way to leverage a position for a Volunteer Coordinator. Interested in talking about it at the Board level. Don Robertson noted that Parks and Trails Master Plans don't typically delve into staff levels associated with the department. The Parks and Rec/Community Services Director would be responsible for implementing the plan and that includes looking at staffing, including the possibility of a Volunteer Coordinator. Tracy Johnson said they could add a recommendation to explore a Volunteer Coordinator for the future. Historically the department has utilized a vast network of volunteers successfully.

David Breames discussed the need for sports fields. Feels the city wants and needs it. The board discussed in more detail what would be needed in terms of size, field requirements etc. Discussion about multi-use fields and the Community Campus Fields/Property. Don Robertson noted that there has been substantial public process and a desire to honor that input in terms of the long term development of the property, but that there is the possibility of moving pieces around. Don Robertson is planning to reach out to council and invite them to include the Parks Board into more of the discussion. Good opportunity to express some needs and desires while keeping in mind the vision of the plan that has been developed through the public process. David Breames feels the plan was developed without enough input.

Tracy Johnson highlighted that the draft Parks and Trails Master Plan identifies deficiencies in the parks system, and identifies possible land acquisition to help with those deficiencies. The Community Campus is not the only site for fields and the campus would be more limited than other potential sites. Don Robertson noted if we are going to make the investment should look at multi use field design that can accommodate a variety of age groups and a variety of sports. Rachel Stephens noted that a multi use location would be beneficial for families.

Will Toogood had a question about the comment about Jonsrud Viewpoint and how it could physically get larger. Tracy Johnson clarified that it would be a reconfiguration and a better use of the given space.

Mary Casey asked about Universal Design/Play to accommodate children on the spectrum. Wanted to know if there was a plan to bring more elements to our parks to accommodate all residents. Tracy Johnson noted that in the design process these needs would definitely be addressed. Today's standard includes meeting ADA standards and hopefully meeting more universal design which is a higher threshold. Can also include nature play and sensory gardens.

**Moved by Mary Casey, seconded by Rachel Stephens**

***Motion to recommend approval of the Updated Parks and Trails Master Plan with an emphasis that a priority be included for the development of a multi-use sports complex.***

**CARRIED. 5-0**

[Sandy PTSMP PTAB 2021-0512](#)

6.2. Cedar Creek Subdivision

Sarah Richardson provided an overview of the planned development.

Discussion about Fee in Lieu vs. Land Dedication and an easement allowing for trail connections.

Don Robertson supports the Fee in Lieu which could help support future park development such as ball fields. Will Toogood noted the lack of developed parks in this area of the community, and the challenge of Vista Loop to cross the highway to get to a proposed park on the other side.

Rachel Stephens asked for clarification about land dedication and fee in lieu relative to the discussion.

City Councilor Kathleen Walker noted that the new updated parks map shows a park proposed in the area (MP8). It is a neighborhood park. Kathleen Walker noted in the 1997 plan there was also a park designated but it was more to the west of Vista Loop. Don Robertson clarified that the board cannot hold a developer to what is in a draft plan.

Discussion about the size of a neighborhood park and what the developer would need to dedicate in terms of land. Don Robertson clarified that the board can make the request but is not guaranteed that outcome. Noted that a Fee in Lieu gives the city more money to use for other park development. Clarified that there is no park currently in the area, it is a "park desert", and there is the barrier of Hwy 26 to a future park planned in Deer Pointe.

Don Robertson gave an overview of the possible trail easement/connection. Noted it would be a key piece to the plan for a perimeter trail around the city.

Kathleen Walker reminded the board that the new plan has not been adopted yet and the Fee in Lieu was last adjusted in 2011 and is much less than current land value.

Discussion about trail easement vs. land dedication and where Fee in Lieu can be applied.

David Breames asked if the Fee in Lieu will be adjusted. Don Robertson noted that it can't be increased until the new plan is adopted.

Discussion about a trail easement and the topography in the area.  
Kathleen Walker noted the challenges to providing parkland for community members in this area.

Don Robertson identified 8 lots along the edge of the development as potential parkland.

David Breames noted that we need to make the Fee in Lieu less desirable to developers.

There needs to be a more incentive to dedicate land.

Will Toogood noted the lots on the edge of the property would be closer to the apartments and identified the barrier that hwy 26 creates.

Mary Casey and Makota Lane noted the land is worth a lot more than the current Fee in Lieu.

**Moved by David Breames, seconded by Mary Casey**

***Motion to recommend Land Dedication instead of Fee in Lieu for the Cedar Creek Heights proposed development. Amended to add a pedestrian access easement across the open space area and consistent with proposed trails plan.***

**CARRIED. 6-0**

**7. Old Business**

**7.1. At Large Dogs in Parks**

Sarah Richardson reviewed the Dogs at Large issue at Bornstedt park. Noted that it has been elevated to a supervisor at the Police Department. Asks the board what they want to do in addition to the enforcement. Noted that the Sandy Source included a reminder about the city ordinances.

Rachel Stephens looked at the Sandy code and noted there is not a leash length designated. Believes it needs to be more specific. David Breames noted it is not easily enforceable because it is challenging to catch the person in the act. Mary Casey asked if City Code supersedes county. David Breames noted the County takes precedence. We can make ours more rigid but not looser.

Mary Casey suggested tabling the discussion. Board agreed.

**8. STAFF UPDATES**

Sarah Richardson shared the opening of Pickleball Courts thanks to Carol Cohen's collaboration with the Oregon Trail School District and her hard work recruiting volunteers to help develop them. Coming very soon.

Shared that Council added \$75,000 additional funds to the Parks Maintenance budget.



Writing a grant for the Regional Trails Program for the Trail Connect from the Sandy Community Campus to the Sandy River Park.

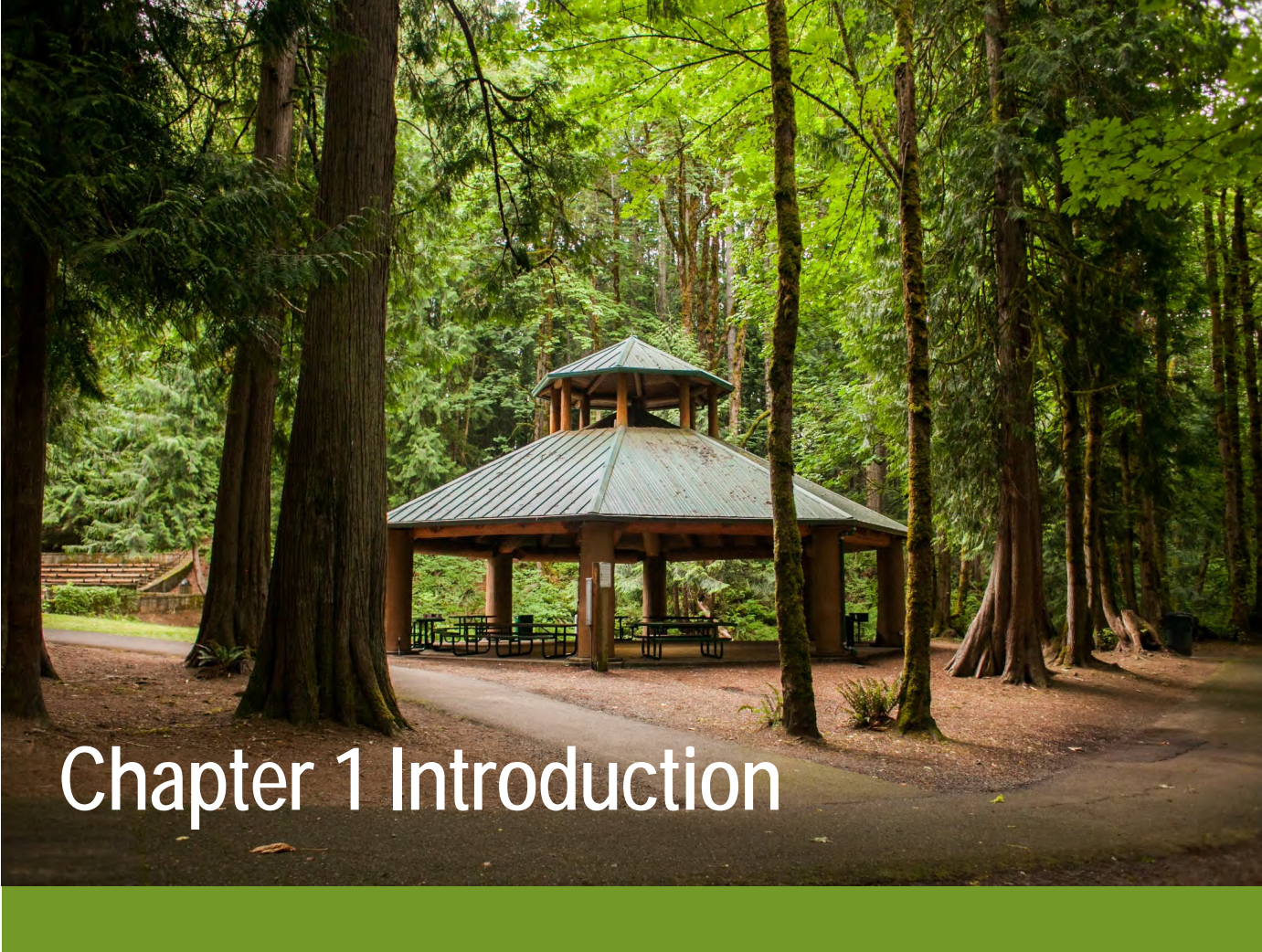
Repairs at the Community Garden continue to be a challenge.

**9. Adjourn**



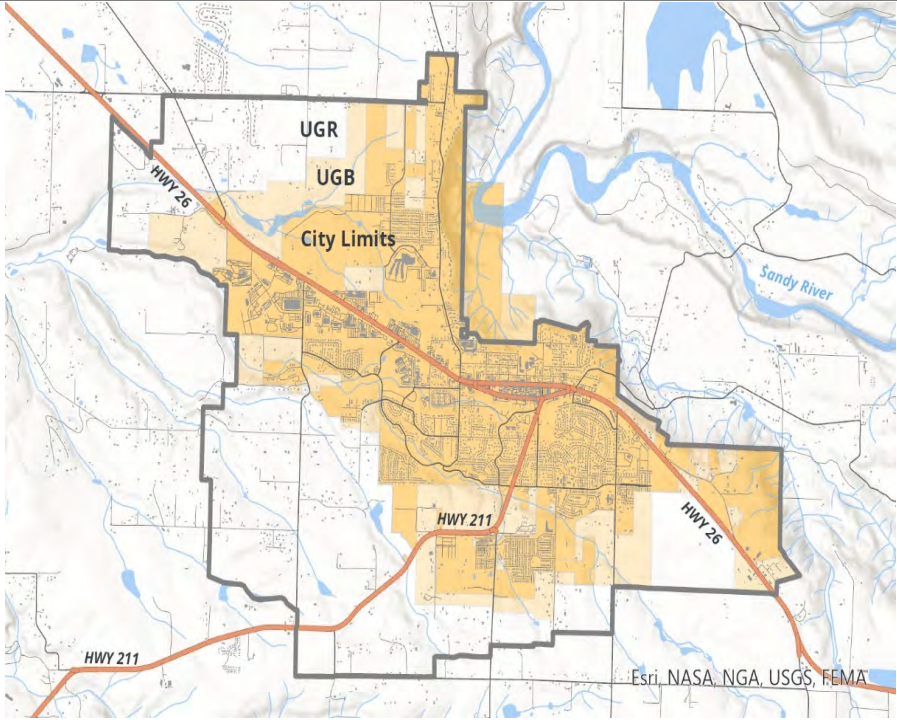
City of Sandy  
Park & Trail System Master Plan  
Parks & Trails Advisory Board

5.12.2021



# Chapter 1 Introduction

# Planning Area





## Chapter 2 Community Profile

# Current Demographics

---

- ❑ Population with UGB: 11,650
- ❑ Forecast Population (2035): 19,100
- ❑ Shifts since 2000:
  - Population grew, but not as much as anticipated.
  - Increase in adults over 55 years of age
  - Increase in people indicating Hispanic or Latino ethnicity



# Public Outreach

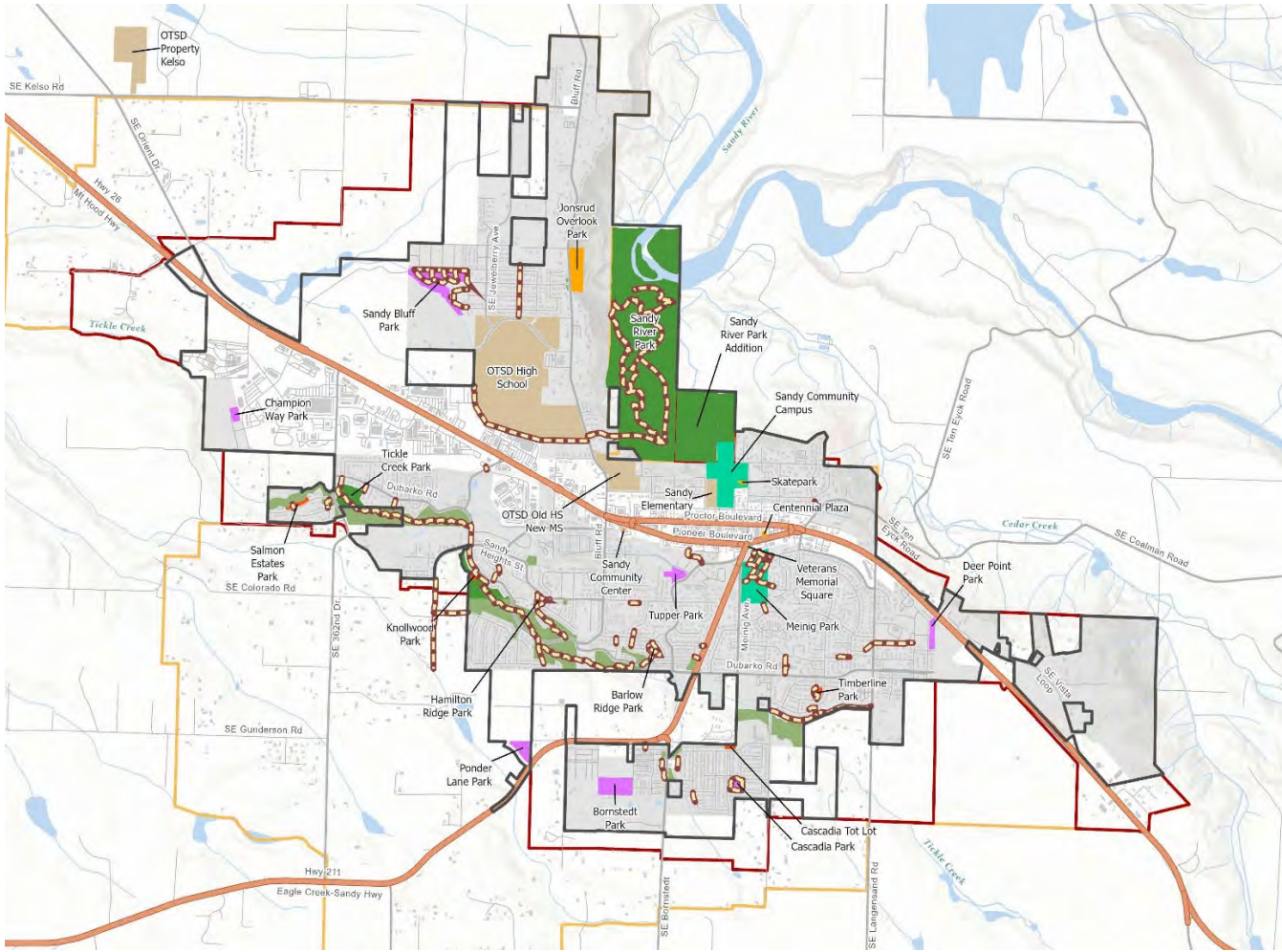
- ❑ Website / Social Media / Traditional Media
- ❑ Stakeholder Interviews
- ❑ Stakeholder Advisory Committee
- ❑ Open Houses/Community Workshops (3)
- ❑ Online Surveys (3)





## Chapter 3 Existing Park System





**Map 5 Existing Park & Trail Inventory**

# Park Inventory

---

## ❑ Mini Parks:

- 6 parks, 3.87 acres

## ❑ Neighborhood Parks:

- 7 parks,
- 16.89 developed acres, 21.29 total acres

## ❑ Community Park:

- 2 parks,
- 10.82 developed acres, 24.82 total acres

## ❑ Natural Areas & Open Space:

- 6 parcels,
- 224.64 acres

## ❑ Special Use Areas:

- 5 sites, 5.27 acres

## ❑ Trails:

- 5.70 miles in parks
- 4.14 miles in other areas





## Chapter 4 Level of Service & Needs

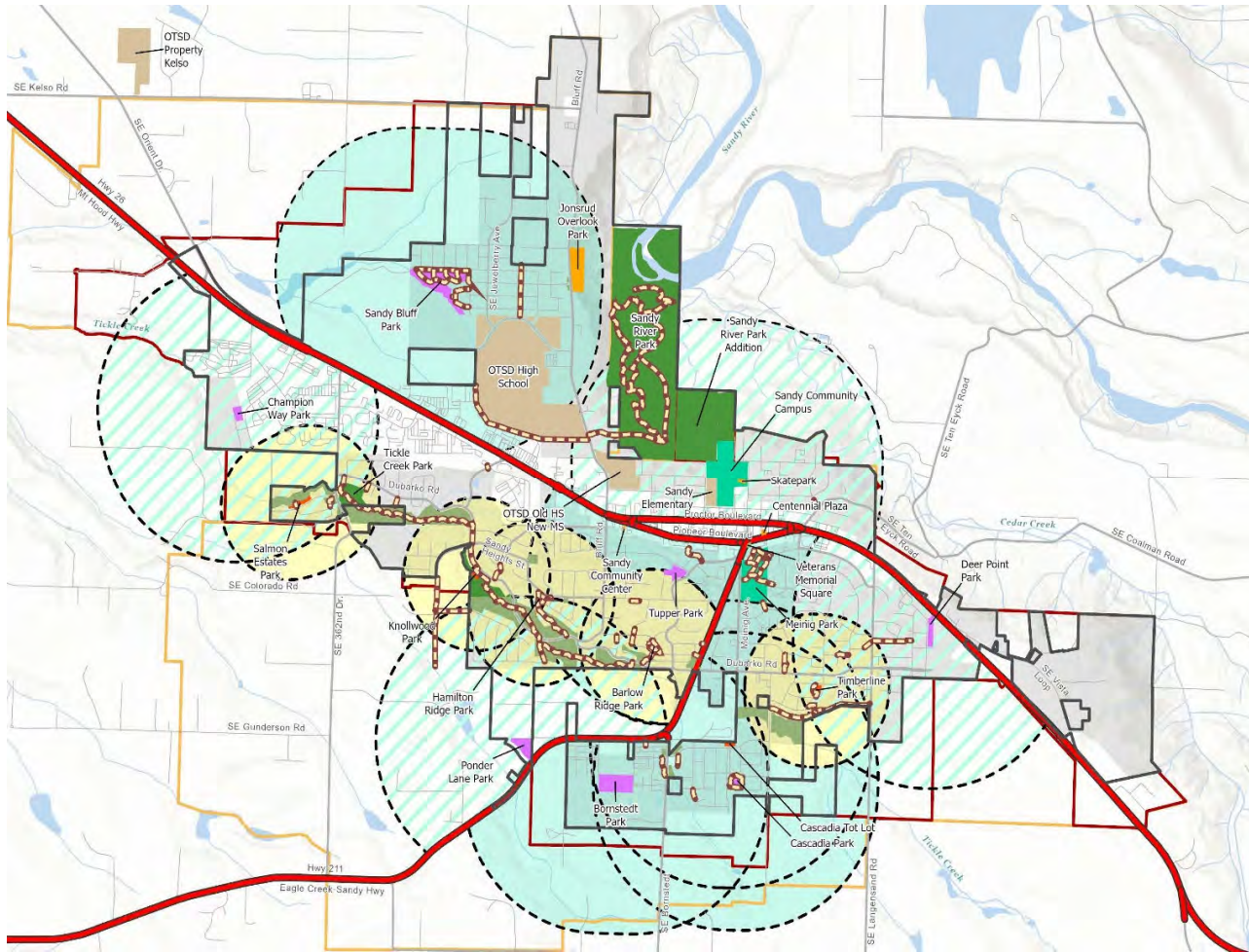
# Level of Service

Park Classification	Total Acres	Developed Acres	Current Total LOS	Current		1997 Parks Master Plan Standard	SCORP Recommended LOS
				Developed	LOS		
Mini Parks	3.87	3.87	0.33	0.33	0.10	0.25 to 0.50	
Neighborhood Parks	21.29	16.89	1.83	1.45	1.60	1.0 to 2.0	
Community Parks	24.82	11.07	2.13	0.95	2.60	2.0 to 6.0	
Natural & Open Space	224.64	0.00	19.32	0.00	12.00	2.0 to 6.0	
Special Use Parks	5.27	1.16	0.45	0.10	1.10	No Guidance	
<b>Total</b>	<b>274.62</b>	<b>31.83</b>	<b>23.62</b>	<b>2.74</b>	<b>17.40</b>	<b>5.25 - 14.5</b>	
Trails (Miles)	9.84		0.85			0.5 to 1.5	

<sup>1</sup> Level of Service (LOS) calculated based on Acres (or miles) / 1000 Population

<sup>2</sup> Current Population based on PSU PRC estimate for 2020 of 11,628





**Map 6 Existing Park Service Areas**

# Needs Analysis

Park Classification	Current Developed LOS <sup>1</sup>	SCORP Recommended LOS	Sandy PTSMF Recommended LOS	Current Acres Needed <sup>2,3</sup>	Future Acres Needed <sup>4</sup>	Total Acres Needed
Mini Parks	0.33	0.25 to 0.50	0.25	-0.96	1.86	0.91
Neighborhood Parks	1.45	1.0 to 2.0	2.00	6.41	14.90	21.31
Community Parks	0.95	2.0 to 6.0	3.00	23.88	22.35	46.23
Natural & Open Space <sup>5</sup>	19.28	2.0 to 6.0	15.00	-49.89	111.75	61.86
Special Use Parks	0.10	No Guidance	-	-	-	-
<b>Total<sup>6</sup></b>	<b>22.11</b>	<b>5.25 - 14.5</b>	<b>20.25</b>	<b>30.3</b>	<b>150.9</b>	<b>130.3</b>
				<b>Miles Needed</b>		
Trails (Miles)	0.85	0.5 - 1.5	1.50	7.52	11.18	18.69



Facility Type	Total Facilities in Community	SCORP Recommended Facility LOS <sup>1</sup>	Current Facility LOS <sup>1</sup>	Current Facility Need (Deficit)	Future Facility Need (Growth) <sup>2</sup>
<b>Standard Facilities</b>					
Picnic shelters <sup>3,4,5,7</sup>	8	0.30	0.69	-5	2
Day-use picnic tables <sup>3,4,5,7</sup>	35	10.00	3.00	82	73
Basketball courts / multi-use courts <sup>3,4,5</sup>	3	0.20	0.26	-1	1
Playgrounds <sup>3,4,7</sup>	10	0.40	0.86	-5	3
Soccer fields / Multi-use field <sup>4,5</sup>	1	0.20	0.09	1	1
Tennis / Pickleball courts <sup>5</sup>	0	0.35	0.00	4	3
Off-leash dog parks <sup>5</sup>	1	0.04	0.09	-1	0
Disc golf courses <sup>7</sup>	0	0.02	0.00	0	0
Volleyball courts	0	0.20	0.00	2	1
Skateboard parks <sup>6</sup>	1	0.04	0.09	-1	0
Amphitheaters	3	0.03	0.26	-3	0
Baseball & Softball fields	1	0.20	0.09	1	1
<b>Optional Facilities</b>					
Pump Track (not in SCORP) <sup>3,5,6</sup>	0	0.00	0.00	1	0
Indoor swimming pools <sup>3,4</sup>	0	0.05	0.00	1	0
Splash Pads (not in SCORP) <sup>6</sup>	1	0.00	0.09	-1	0
Community Gardens (not in SCORP) <sup>3</sup>	1	0.00	0.09	-1	0
Non-motorized boat launches	0	0.25	0.00	3	2
Lacrosse fields	0	0.15	0.00	2	1
Football fields	1	0.10	0.09	0	1



## Chapter 5 Recommendations

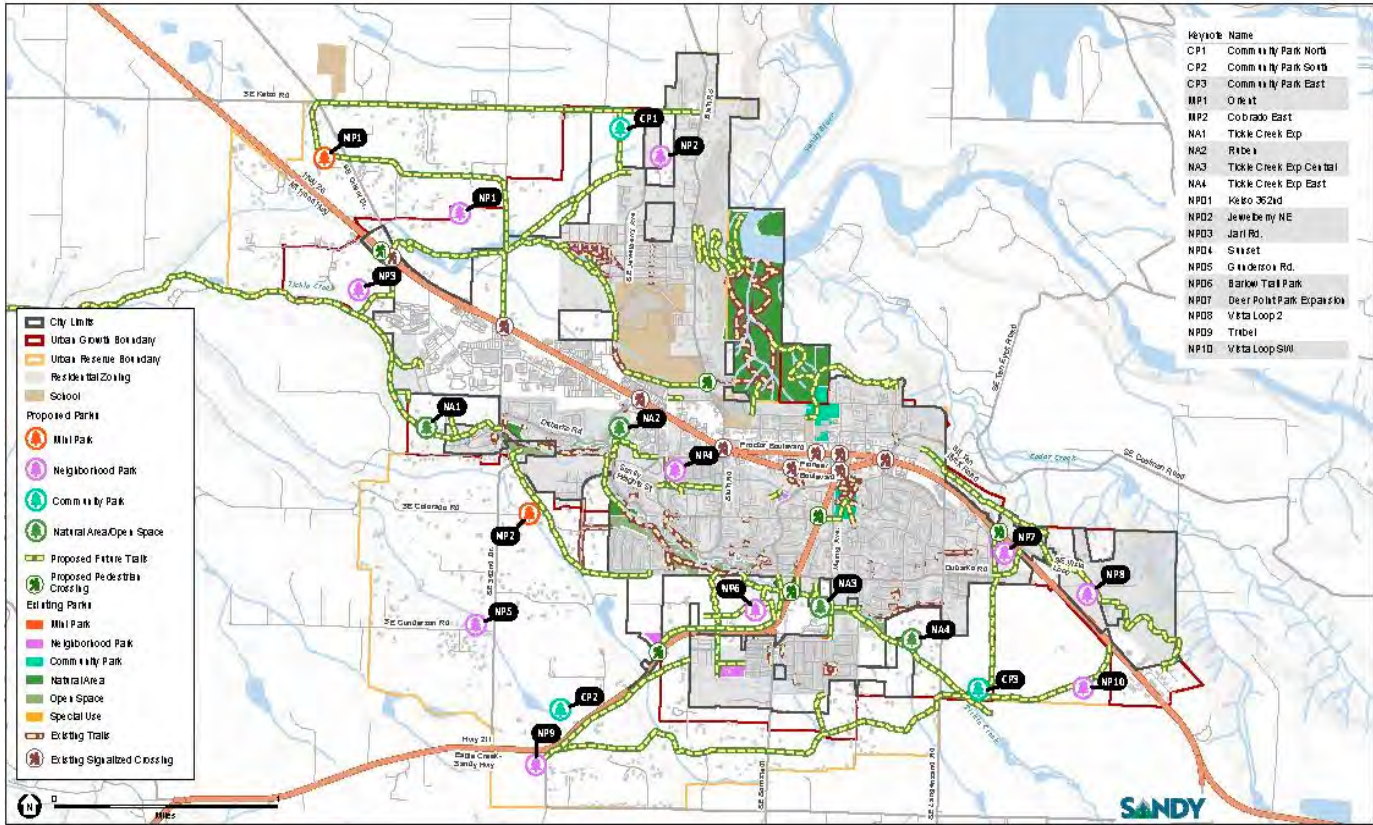


# Recommendations

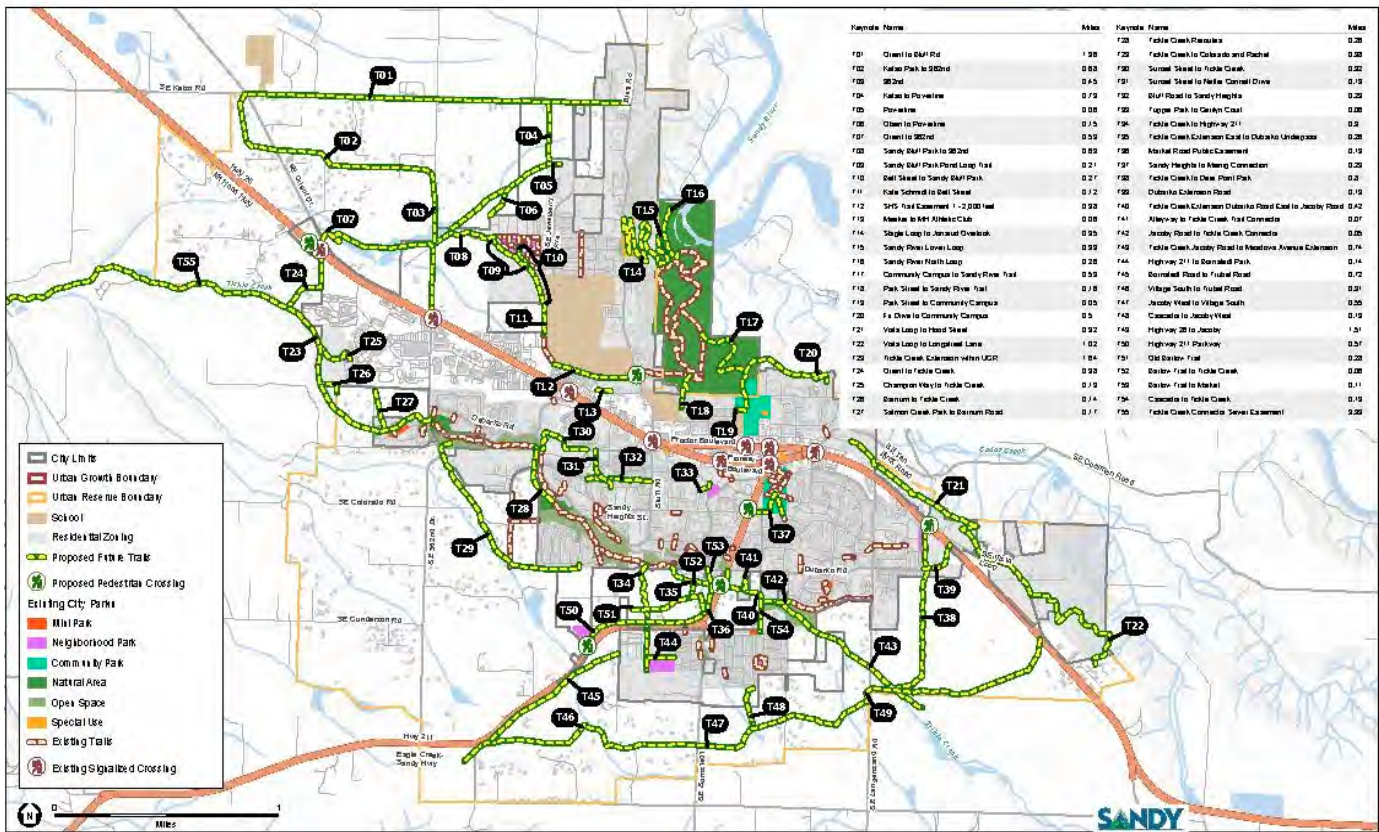
---

- Derived from all of the work to date, input from TAC, City staff and public input
  - Existing Parks
  - Undeveloped Parks
  - Proposed Parks & Trail
  - Recreational Facilities
  - Policy and Code Revisions
  - Operations and Maintenance





# Map 8 Proposed Park System



Map 14 Proposed Trail System



## Chapter 6 Implementation

# Priorities

---

- ❑ Undeveloped parks
- ❑ Acquire and develop new parks
  - Community parks
  - Neighborhood park service area gaps
  - New neighborhoods
- ❑ Improve trail system
  - Safe crossings
  - Looped trail system
- ❑ Renovate and upgrade existing parks
- ❑ Distribute parks and facilities equitably
- ❑ Plan for future growth



# Tier 1 CIP

Map ID	Site	Improvements	Cost
<b>Tier 1 Existing Parks</b>			
NP	Deer Point Park	Design, permitting, & development	\$ 1,442,800
NP	Champion Way Park	Design, permitting, & development	\$ 998,700
NP	Ponder Lane Park	Design, permitting, & development	\$ 1,848,000
NP		Dog Park; Playground; Picnic Area	\$ 250,000
CP	Sandy Community Campus - Phase 1	Parking area, playground, picnic, skate park	\$ 3,633,200
NA	Sandy River Park - Phase 1	Trailhead, trails	\$ 800,000
<b>Tier 1 Existing Park Improvement Cost</b>			<b>\$ 8,972,700</b>
<b>Tier 1 Proposed Parks</b>			
NP 4	Sunset	Fill service area gap on portion of City owned parcel	\$ 1,700,000
NP 7	Deer Point Expansion	Expand existing undeveloped park	\$ 1,700,000
CP 1	Community North	Develop future community park in north	\$ 5,900,000
NA 1	Tickle Creek Expansion - West	Opportunity acquisitions/ donations along creek	\$ -
<b>Tier 1 Proposed Park Improvement Cost</b>			<b>\$ 9,300,000</b>



Tier 1 Proposed Trails			
<b>T03</b> (P21)	362 <sup>nd</sup> <sup>3</sup>	6' - 8' wide gravel trail	\$ 104,500
<b>T04</b>	Kelso to Powerline	6' - 8' wide gravel trail	\$ 184,500
<b>T05</b>	Powerline	5' concrete path	\$ 30,600
<b>T06</b>	Olson to Powerline	5' concrete path	\$ 81,700
<b>T08</b> (P19)	Sandy Bluff Park to 362 <sup>nd</sup> <sup>3</sup>	6' - 8' wide gravel trail	\$ 146,300
<b>T09</b> (P19)	Sandy Bluff Park Pond Loop Trail <sup>3</sup>	6' - 8' wide gravel trail	\$ 48,400
<b>T10</b> (P19)	Bell Street to Sandy Bluff Park <sup>3</sup>	6' - 8' wide gravel trail	\$ 63,900
<b>T11</b> (P19)	Kate Schmidt to Bell Street <sup>3</sup>	3' wide natural surface trail	\$ 28,500
<b>T12</b> (P19)	SHS Trail Easement 1 <sup>3</sup>	3' wide natural surface trail	\$ 88,400
<b>T13</b>	Meeker to MH Athletic Club	5' concrete path	\$ 34,800
<b>T17</b>	Community Campus to Sandy River Trail	3' wide natural surface trail	\$ 23,900
<b>T19</b>	Park Street to Community Campus	3' wide natural surface trail	\$ 1,800
<b>T21</b>	Vista Loop to Hood Street	6' - 8' wide gravel trail	\$ 37,100
<b>T28</b> (P16)	Tickle Creek Reroutes <sup>3</sup>	6' - 8' wide gravel trail	\$ 61,200
<b>T30</b>	Sunset Street to Tickle Creek	3' wide natural surface trail	\$ 13,000
<b>T31</b>	Sunset Street to Nettie Connett Drive	5' wide concrete path	\$ 101,600
<b>T32</b>	Bluff Road to Sandy Heights	3' wide natural surface trail	\$ 11,600
<b>T33</b>	Tupper Park to Gerylyn Court	5' concrete path	\$ 30,800
<b>T35</b> (P17)	Tickle Creek Extension East to Dubarko Underp;	6' - 8' wide gravel trail	\$ 59,900
<b>T38</b>	Tickle Creek to Deer Point Park	5' concrete path	\$ 432,000
<b>T39</b>	Dubarko Extension Road	8' wide asphalt trail	\$ 127,800
<b>T40</b> (P22)	Tickle Creek Extension Dubarko East to Jacoby <sup>3</sup>	6' - 8' wide gravel trail	\$ 98,700
<b>T41</b>	Alleyway to Tickle Creek Trail Connector	5' concrete path	\$ 37,500
<b>T42</b>	Jacoby Road to Tickle Creek Connector	5' concrete path	\$ 27,900
<b>T44</b>	Bornstedt Park	5' concrete path	\$ 78,000
<b>T50</b> (P23)	Highway 211 Parkway		\$ 389,500
<b>T54</b>	Cascadia to Tickle Creek	6' - 8' wide gravel trail	\$ 30,200
<b>TX1</b>	Bluff Road Crossing (Mid-block)		\$ 150,000
<b>Tier 1 Proposed Trail Improvement Cost</b>			<b>\$ 2,524,162</b>

# Current Funding Sources

---

- ❑ General Fund - Operations
- ❑ System Development Charges
- ❑ Land Dedication / Fee in Lieu
- ❑ Grants
- ❑ Donations





# Development Funding

---

Funding Source	Amount
SDC Annual Budget Estimate	\$ 315,000
General Fund	\$ -
Grants	\$ 100,000
Donations / Volunteers	\$ 50,000
Estimated Annual Revenue	\$ 465,000
Estimated 5-year Revenue	\$ 2,325,000
Park System Development Charge (SDC) Balance	\$ 1,355,028
Urban Renewal Funds	\$ 3,300,000
General Obligation Bond	\$ 10,000,000
<b>Estimated 5-Year Capital Funding Total</b>	<b>\$ 16,980,028</b>



# Land Acquisition Funding

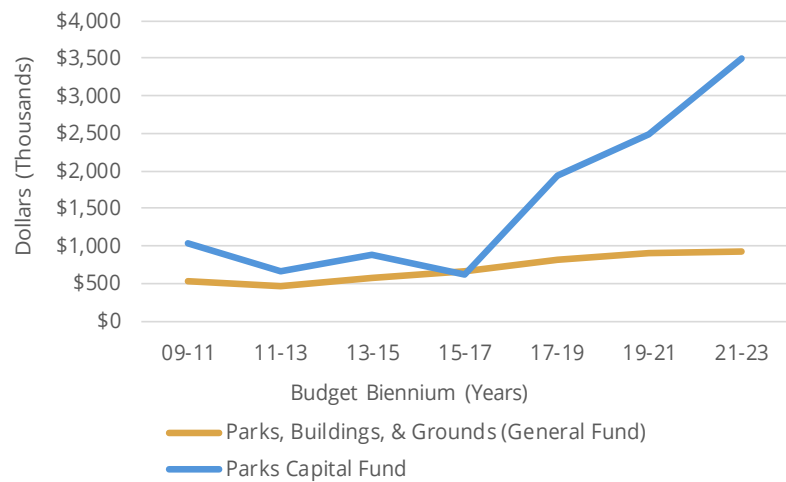
---

Funding Source	Amount
Land (Fee in Lieu) Annual Budget Estimate	\$ 165,000
Estimated 5-year Land (Fee-in-Lieu) Revenue	\$ 825,000
Land (Fee in Lieu) Beginning Balance	\$ 1,133,431
<b><i>Estimated 5-Year Land Acquisition Total</i></b>	<b>\$ 1,958,431</b>



# Operations Funding

## Existing Funding



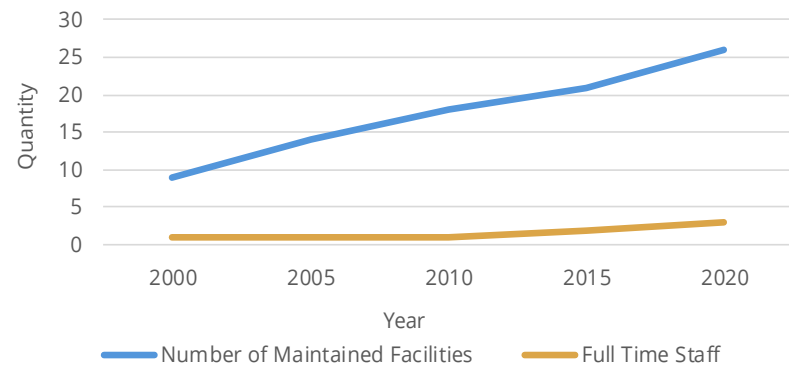
Source: City of Sandy Biennial Budgets

# Operations Funding

3 staff

26 parks

## Facilities and Staff



Source: City of Sandy Biennial Budgets, Google Earth



# Appendices

# Appendices

---

- ❑ Capital Project Lists
- ❑ Existing Park Inventory
- ❑ Design Guidelines
- ❑ Park Concepts
- ❑ Potential Grants
- ❑ Preliminary SDC Analysis
- ❑ Public Outreach Summary

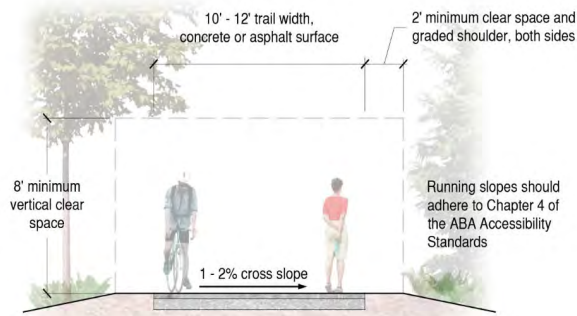


Amenities	Mini Parks	Neighborhood Parks	Community Parks
Playground	2,000 square feet	3,500 square feet	6,000 square feet
Flat, Irrigated Lawn	3,000 square feet	1/4 acre	1 acre
Trash Receptacle	1	1	1 per 2 acres
Pet Waste Station	1	1	1 per 2 acres
Bicycle Parking	2 stalls	4 stalls	As required per code, but not less than 1 per acre
Picnic Table	1 per 1/4 acre	1 per 1/2 acre	2 per acre
Bench	1 per 1/4 acre	1 per 1/2 acre	1 per acre
Drinking Fountain	Optional	1	1 per 5 acres
Sport Court (half-sized)	Optional	Optional	Optional
Sport Court (full-sized)	Optional	Optional <sup>1</sup>	at least 1
Open Multi-Use Field	Optional	Standard	Standard
Sport Field	-	Optional <sup>1</sup>	at least 1
Looped Walking Path	Optional	Standard	Multiple
Splash Pad	-	Optional <sup>1</sup>	Optional <sup>2</sup>
Dog off-leash area	-	Optional <sup>1</sup>	Optional <sup>2</sup>
Picnic Shelter (3-4 tables)	-	Optional <sup>1</sup>	Multiple
Picnic Shelter (6-8 tables)	-	-	Optional <sup>2</sup>
Restroom	-	Optional	Standard
Community Garden	-	Optional	Optional <sup>2</sup>
Event Space	-	-	Optional <sup>2</sup>
Disc Golf	-	-	Optional <sup>2</sup>
Pump Track	-	-	Optional <sup>2</sup>
Skate Spot / Park	-	Optional <sup>1</sup>	Optional <sup>2</sup>
Natural Area	-	-	Optional <sup>2</sup>
Off-street Parking	-	-	Standard

<sup>1</sup> Neighborhood parks should include at least 1 of noted optional amenities

<sup>2</sup> Community parks should include at least 3 of noted optional amenities

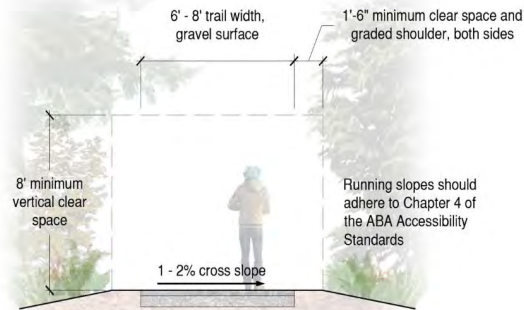
## Design Standards



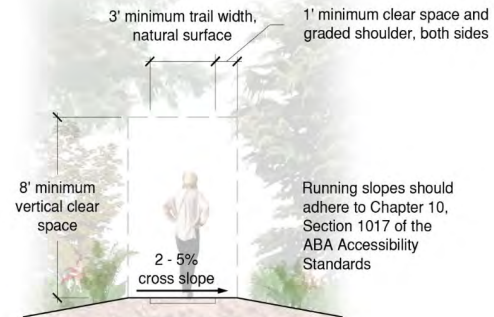
CLASS 1  
SHARED-USE PATH



CLASS 3  
NEIGHBORHOOD CONNECTOR PATH



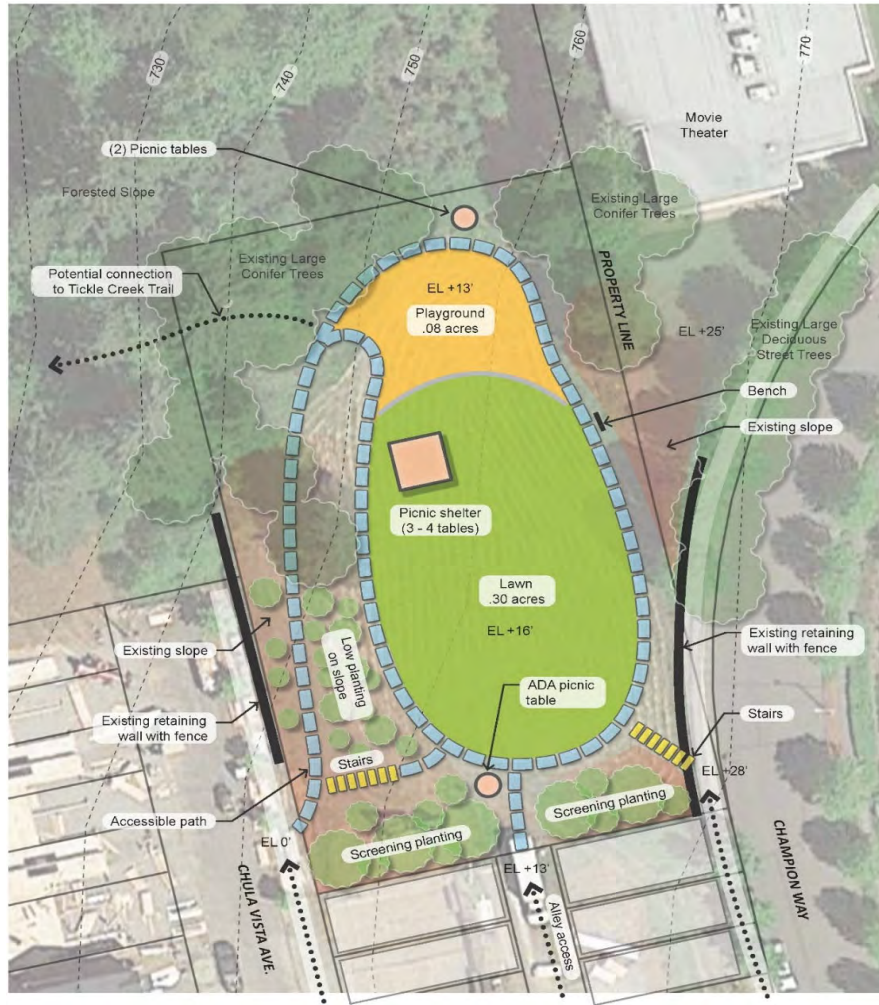
CLASS 2  
SHARED-USE PATH IN NATURAL AREA



CLASS 4  
NATURAL AREA TRAIL

## Trail Classifications

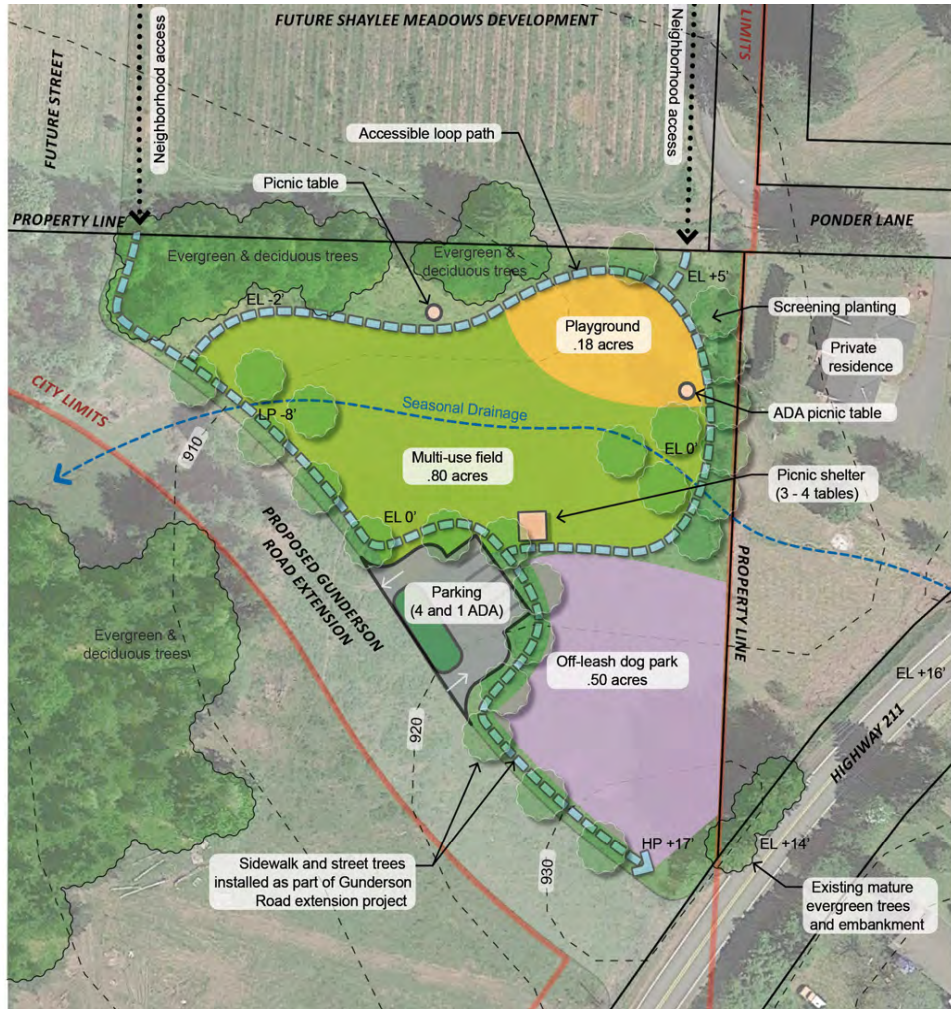




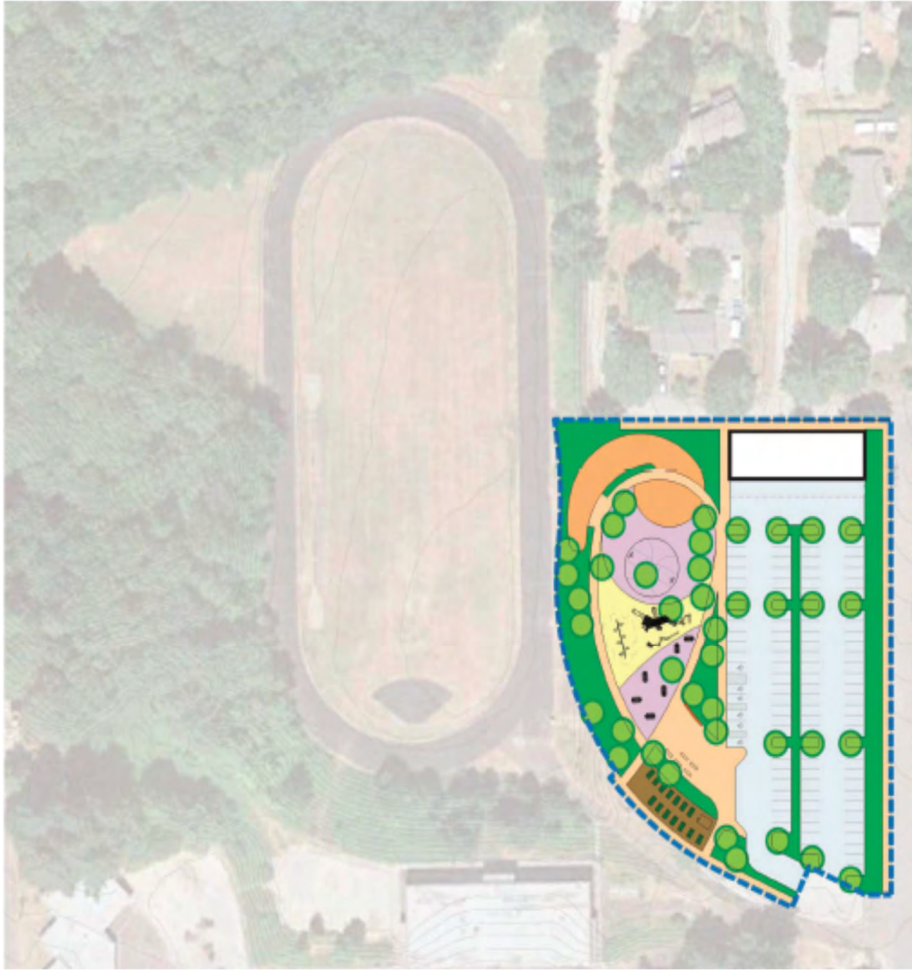
# Champion Way Park Concept



# Deer Point Park Concept



# Ponder Lane Park Concept



# Sandy Community Campus - Phase 1



# Sandy Community Campus Concept



# Next Steps

---

- ❑ Joint Planning Commission & City Council Work Session – June 7
- ❑ Planning Commission – July?
- ❑ City Council Adoption – August?





**MINUTES**  
**Parks & Trails Advisory Board Meeting**  
**Wednesday, May 12, 2021 City Hall- Council**  
**Chambers, 39250 Pioneer Blvd., Sandy,**  
**Oregon 97055 7:00 PM**

**BOARD MEMBERS PRESENT:** Don Robertson, Board Member, Makoto Lane, Board Member, David Breames, Board Member, Will Toogood, Board Member, Rachel Stephens, Board Member, and Mary Casey, Board Member

**BOARD MEMBERS ABSENT:** Sarah Schrodetz, Board Member

**STAFF PRESENT:** Sarah Richardson, Community Services

**MEDIA PRESENT:**

**1. Meeting Format**

Meeting Format Notice:

**The Parks and Trails Advisory Board will conduct this meeting electronically using the Zoom video conference platform.**

Members of the public may listen, view, and/or participate in this meeting using Zoom.

Using Zoom is free of charge. See the instructions below:

- To login to the electronic meeting online using your computer, [click this link:](#)
- **Note a passcode may be required:** 663511
- If you would rather access the meeting via telephone, dial 1-669-900-6833. When prompted, enter the following meeting number: 838 6201 9585
- If you do not have access to a computer or telephone and would like to take part in the meeting, please contact the Sandy Community Center (503-668-5569) by May 10th and arrangements will be made to facilitate your participation.

**2. Roll Call**

**3. Public Comment**

Eric Walland attended to update the board on at-large dogs at Bornstedt Park.

Feels there has been no improvement at the park, and dogs are now being tied to trees with long lines.

Feels issue is getting worse with the nice weather, and is a livability issue.



Don Robertson noted this item is on the agenda and the discussion will continue at that point in the agenda.

**4. Consent Agenda**

4.1. Meeting Minutes

**5. Changes to the Agenda**

**6. New Business**

6.1. Parks and Trails Master Plan Update

Tracy Johnson from Environmental Science Associates (ESA) attended to do a final review of the Draft Parks and Trails Master Plan update. Slides from the presentation are attached.

Tracy Johnson noted the questions forwarded from Board members after the last meeting and said they will be incorporated.

Will Toogood asked about Volunteer Coordinators. Wondering if there was a way to leverage a position for a Volunteer Coordinator. Interested in talking about it at the Board level. Don Robertson noted that Parks and Trails Master Plans don't typically delve into staff levels associated with the department. The Parks and Rec/Community Services Director would be responsible for implementing the plan and that includes looking at staffing, including the possibility of a Volunteer Coordinator. Tracy Johnson said they could add a recommendation to explore a Volunteer Coordinator for the future. Historically the department has utilized a vast network of volunteers successfully.

David Breames discussed the need for sports fields. Feels the city wants and needs it. The board discussed in more detail what would be needed in terms of size, field requirements etc. Discussion about multi-use fields and the Community Campus Fields/Property. Don Robertson noted that there has been substantial public process and a desire to honor that input in terms of the long term development of the property, but that there is the possibility of moving pieces around. Don Robertson is planning to reach out to council and invite them to include the Parks Board into more of the discussion. Good opportunity to express some needs and desires while keeping in mind the vision of the plan that has been developed through the public process. David Breames feels the plan was developed without enough input.

Tracy Johnson highlighted that the draft Parks and Trails Master Plan identifies deficiencies in the parks system, and identifies possible land acquisition to help with those deficiencies. The Community Campus is not the only site for fields and the campus would be more limited than other potential sites. Don Robertson noted if we are going to make the investment should look at multi use field design that can accommodate a variety of age groups and a variety of sports. Rachel Stephens noted that a multi use location would be beneficial for families.

Will Toogood had a question about the comment about Jonsrud Viewpoint and how it could physically get larger. Tracy Johnson clarified that it would be a reconfiguration and a better use of the given space.

Mary Casey asked about Universal Design/Play to accommodate children on the spectrum. Wanted to know if there was a plan to bring more elements to our parks to accommodate all residents. Tracy Johnson noted that in the design process these needs would definitely be addressed. Today's standard includes meeting ADA standards and hopefully meeting more universal design which is a higher threshold. Can also include nature play and sensory gardens.

**Moved by Mary Casey, seconded by Rachel Stephens**

***Motion to recommend approval of the Updated Parks and Trails Master Plan with an emphasis that a priority be included for the development of a multi-use sports complex.***

**CARRIED. 5-0**

[Sandy PTSMP PTAB 2021-0512](#)

6.2. Cedar Creek Subdivision

Sarah Richardson provided an overview of the planned development.

Discussion about Fee in Lieu vs. Land Dedication and an easement allowing for trail connections.

Don Robertson supports the Fee in Lieu which could help support future park development such as ball fields. Will Toogood noted the lack of developed parks in this area of the community, and the challenge of Vista Loop to cross the highway to get to a proposed park on the other side.

Rachel Stephens asked for clarification about land dedication and fee in lieu relative to the discussion.

City Councilor Kathleen Walker noted that the new updated parks map shows a park proposed in the area (MP8). It is a neighborhood park. Kathleen Walker noted in the 1997 plan there was also a park designated but it was more to the west of Vista Loop. Don Robertson clarified that the board cannot hold a developer to what is in a draft plan.

Discussion about the size of a neighborhood park and what the developer would need to dedicate in terms of land. Don Robertson clarified that the board can make the request but is not guaranteed that outcome. Noted that a Fee in Lieu gives the city more money to use for other park development. Clarified that there is no park currently in the area, it is a "park desert", and there is the barrier of Hwy 26 to a future park planned in Deer Pointe.

Don Robertson gave an overview of the possible trail easement/connection. Noted it would be a key piece to the plan for a perimeter trail around the city.

Kathleen Walker reminded the board that the new plan has not been adopted yet and the Fee in Lieu was last adjusted in 2011 and is much less than current land value.

Discussion about trail easement vs. land dedication and where Fee in Lieu can be applied.

David Breames asked if the Fee in Lieu will be adjusted. Don Robertson noted that it can't be increased until the new plan is adopted.

Discussion about a trail easement and the topography in the area.  
Kathleen Walker noted the challenges to providing parkland for community members in this area.

Don Robertson identified 8 lots along the edge of the development as potential parkland.

David Breames noted that we need to make the Fee in Lieu less desirable to developers.

There needs to be a more incentive to dedicate land.

Will Toogood noted the lots on the edge of the property would be closer to the apartments and identified the barrier that hwy 26 creates.

Mary Casey and Makota Lane noted the land is worth a lot more than the current Fee in Lieu.

**Moved by David Breames, seconded by Mary Casey**

***Motion to recommend Land Dedication instead of Fee in Lieu for the Cedar Creek Heights proposed development. Amended to add a pedestrian access easement across the open space area and consistent with proposed trails plan.***

**CARRIED. 6-0**

**7. Old Business**

**7.1. At Large Dogs in Parks**

Sarah Richardson reviewed the Dogs at Large issue at Bornstedt park. Noted that it has been elevated to a supervisor at the Police Department. Asks the board what they want to do in addition to the enforcement. Noted that the Sandy Source included a reminder about the city ordinances.

Rachel Stephens looked at the Sandy code and noted there is not a leash length designated. Believes it needs to be more specific. David Breames noted it is not easily enforceable because it is challenging to catch the person in the act. Mary Casey asked if City Code supersedes county. David Breames noted the County takes precedence. We can make ours more rigid but not looser.

Mary Casey suggested tabling the discussion. Board agreed.

**8. STAFF UPDATES**

Sarah Richardson shared the opening of Pickleball Courts thanks to Carol Cohen's collaboration with the Oregon Trail School District and her hard work recruiting volunteers to help develop them. Coming very soon.

Shared that Council added \$75,000 additional funds to the Parks Maintenance budget.

Writing a grant for the Regional Trails Program for the Trail Connect from the Sandy Community Campus to the Sandy River Park.

Repairs at the Community Garden continue to be a challenge.

**9. Adjourn**

# TEN EYCK RIM SUBDIVISION VICINITY MAP





City of Sandy  
39250 Pioneer Blvd.,  
Sandy, OR 97055

Agenda Date: June 9, 2021

To: Parks and Trails Advisory Board

From: Sarah Richardson, Staff Liaison Parks and Trails Advisory Board

Subject: Ten Eyck Rim

Attachments: None

---

---

**Background:**

Ten Eyck Rim is a proposed 9 lot subdivision.

*"The property is zoned R-2, Medium Density Residential. The proposal will include the construction of dwelling types permitted outright in the R-2 zone. The parcel contains frontage along Ten Eyck Road on the west, Pleasant Street on the south, and Hood Street on the north."*

The developer is proposing to pay the Fee in Lieu of Land Dedication and given the size of the proposed development land dedication would not be beneficial to the City of Sandy as it would only be 0.12 acres. The site is also in close proximity to the future Sandy Community Campus Park, Meinig Park, and Centennial Plaza. The fee in-lieu would be \$28,920.

Attachments: None. For more information about this proposal visit -  
<https://www.ci.sandy.or.us/development-services/project/ten-eyck-rim-subdivision-9-lot>

**Recommendation:** Pass a motion to recommend accepting a Fee in Lieu for Ten Eyck Rim.

**Staff Contact:**

Sarah Richardson  
503-489-2150  
[srichardson@cityofsandy.com](mailto:srichardson@cityofsandy.com)





City of Sandy  
39250 Pioneer Blvd.,  
Sandy, OR 97055

Agenda Date: June 9, 2021

To: Parks and Trails Advisory Board

From: Sarah Richardson, Staff Liaison Parks and Trails Advisory Board

Subject: Board Officers/Elections

Attachments: None

---

The board is scheduled to elect new officers at the June 9, 2021 meeting.

The Bylaw for the Parks and Trails Advisory Board is as follows:

**Article IV: Officers**

*The officers of the advisory board shall be Chair, Vice Chair, and Secretary. They shall be elected at the last meeting of each fiscal year and shall serve for a one-year term. The Chair shall call and preside over meetings. The Vice Chair shall preside in the absence of the chair. The Secretary shall take meeting minutes.*

**Recommended Motion:**

Move to nominate \_\_\_\_\_ for Parks and Trails Advisory Board Chair for fiscal year 2021-22

Move to nominate \_\_\_\_\_ for Parks and Trails Advisory Board Vice Chair for fiscal year 2021-22

Move to nominate \_\_\_\_\_ for Parks and Trails Advisory Board Secretary for fiscal year 2021-22

**Staff Contact:**

Sarah Richardson  
503-489-2150  
srichardson@cityofsandy.com