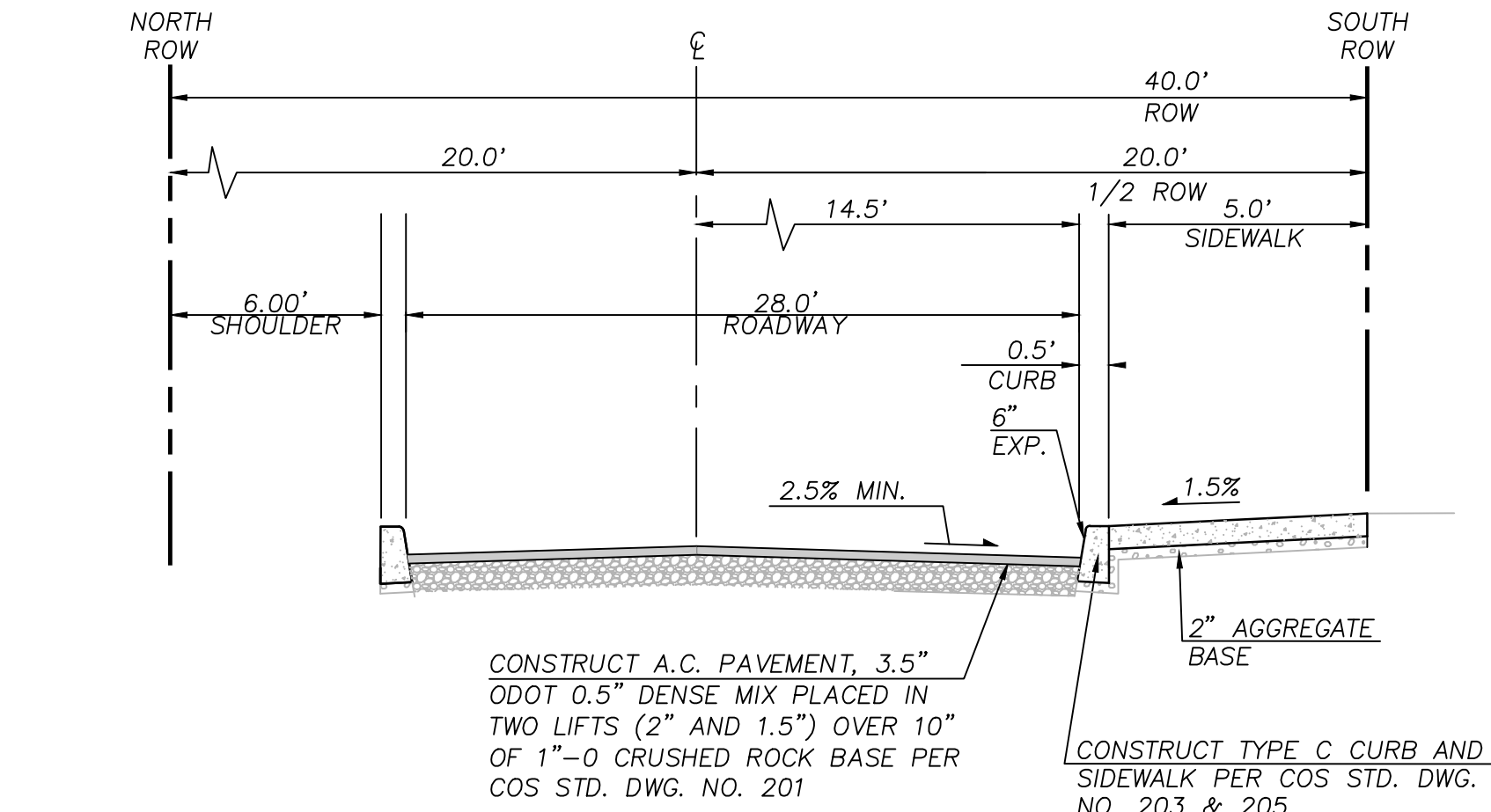




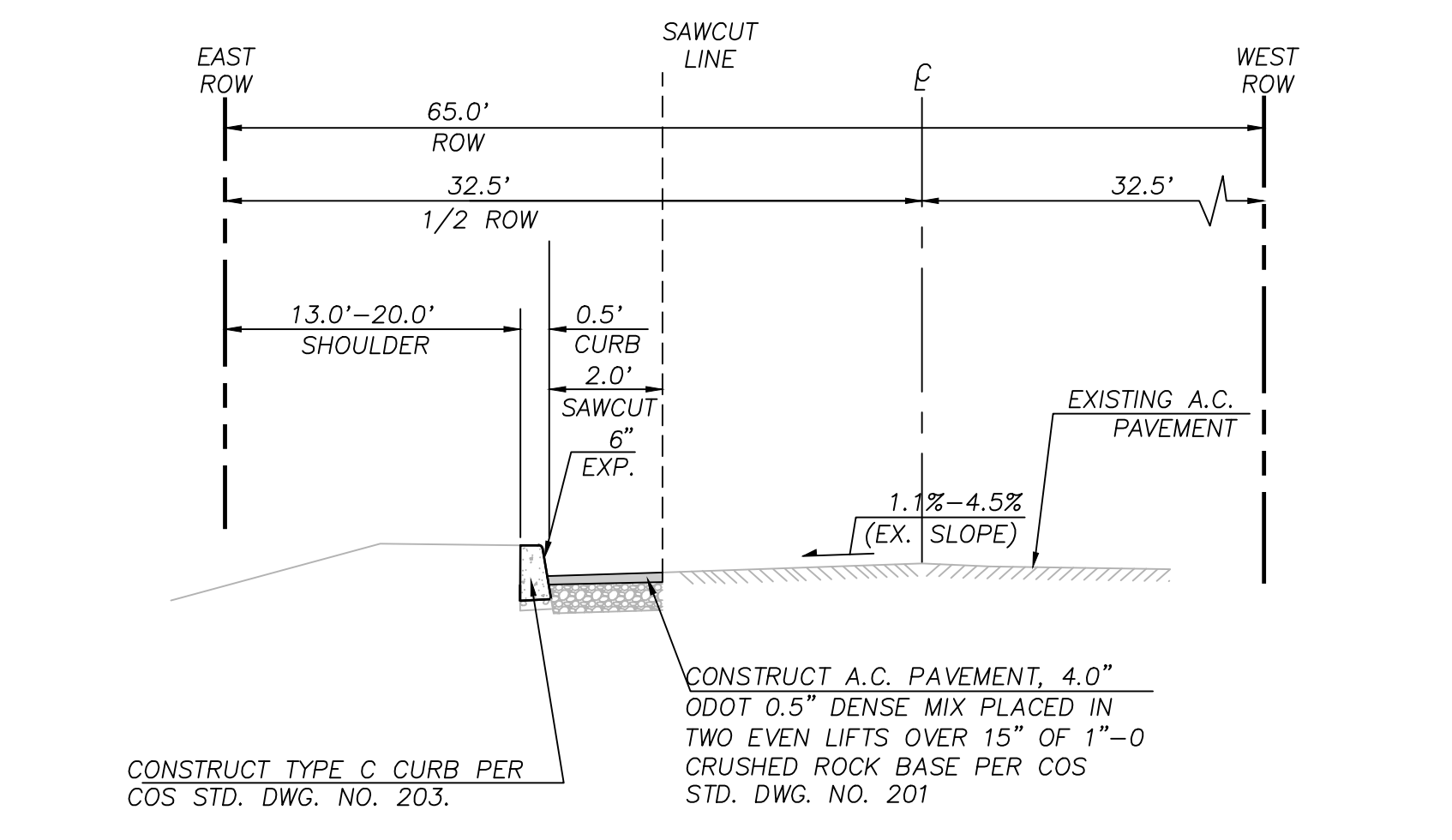
LAYOUT AND PAVING PLAN
SCALE: 1"=40'

SHEET LEGEND		
	PRIVATE ASPHALT PAVING	9 C4.00
	PRIVATE CONCRETE SIDEWALK	SEE L-SHTS
	PUBLIC CONCRETE SIDEWALK	
	PUBLIC ASPHALT PAVING	
	PUBLIC CONCRETE DRIVEWAY	
	LANDSCAPING	SEE L-SHTS
	STANDARD CONCRETE CURB	6 C4.00
	SAWCUT	

LANDSCAPE ARCHITECTS PC
lango . hansen
1100 NW GILMAN #3B PORTLAND OR 97209 T 503.295.2437



2 SCENIC STREET TYPICAL SECTION (LOCAL)
NTS



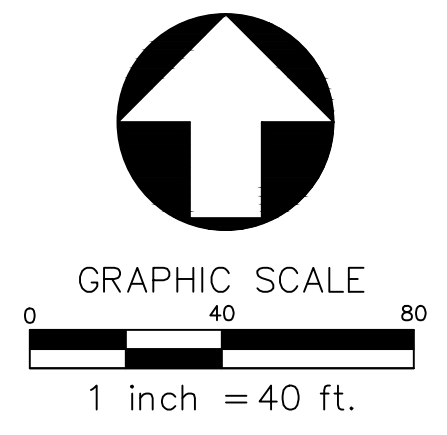
1 SE MEINING AVENUE TYPICAL SECTION (COLLECTOR)
NTS

SANDY COMMUNITY CAMPUS PARK
CITY OF SANDY
17225 SMITH AVE
SANDY, OR 97055
CITY OF SANDY PARKS AND RECREATION

BID SET

REVISIONS
ADDENDUM #2 12/06/2023

SCALE AS NOTED
DRAWN BY MCS
DATE 11.16.23
PROJECT NO. 2239



LAYOUT AND PAVING PLAN
C2.00



UTILITY PLAN
SCALE: 1" = 40'

STORM SEWER SCHEDULE		
ITEM	DESCRIPTION	REFERENCE
SDPOC-1	STORMWATER POINT OF CONNECTION, CONNECT EXISTING 30" STORM PIPE, ESTIMATED IE=891±	
SDPOC-2	STORMWATER POINT OF CONNECTION, CONNECT PLAYGROUND STORMWATER SYSTEM, IE=915.00	
SDDS-1	STORMWATER DETENTION TANK, CORRUGATED METAL PIPE BY CONTECH, SIZE=200 LF, 96" DIAMETER WITH FLOW-CONTROL TEE AND ORIFICE CONTROL, IE=895.52 ORIFICE-1(1.5") IE=895.52 ORIFICE-2(6") IE=901.17 ORIFICE-3(12") IE=903.02	SHEET C4.01
WQV-1	WATER QUALITY VAULT, 8'x11' PEAK DIVERSION STORMFILTER VAULT BY CONTECH (18) 27" PHOSPHOSORB CARTRIDGES RIM=914.37 IE IN=898.65 IE OUT=895.60	SHEET C4.02
OF-1	OUTFALL, EXISTING 30", IE=890.37	
OF-2	OUTFALL, PROPOSED 6", IE=904.00	18/C4.00
SDMH-1	STORMWATER MANHOLE, 48" RIM=918.00 IE IN (12"N)=912.15 IE IN (6"NE)=913.00 IE OUT (12"S)=903.86	COS. STD. DWG. NO. 315
SDMH-2	STORMWATER MANHOLE, 48" RIM=914.00 IE IN (6"NW)=902.00 IE IN (12"N)=901.50 IE IN (6"SE)=902.50 IE OUT (12"S)=899.50	COS. STD. DWG. NO. 315
SDMH-3	STORMWATER MANHOLE, 48" RIM=923.16 IE OUT (12"S)=920.00	COS. STD. DWG. NO. 315
EX.SDMH-1	EXISTING STORMWATER MANHOLE IE IN (8"NE)=923.73 IE IN (8"SW)=923.83 IE OUT (30"NW)=916.87	
EX.SDMH-2	EXISTING STORMWATER MANHOLE IE IN (8"NE)=917.82 IE OUT (8"NW)=917.62	
AD-1	AREA DRAIN RIM=SEE SKATE PARK PLANS IE=904.84	15/C4.00
AD-2	AREA DRAIN RIM=SEE SKATE PARK PLANS IE=904.90	15/C4.00
AD-3	AREA DRAIN RIM=SEE SKATE PARK PLANS IE=904.25	15/C4.00
AD-4	AREA DRAIN RIM=SEE SKATE PARK PLANS IE=904.00	15/C4.00
AD-5	AREA DRAIN RIM=SEE SKATE PARK PLANS IE=904.09	15/C4.00
AD-6	AREA DRAIN RIM=SEE SKATE PARK PLANS IE=903.61	15/C4.00
AD-7	AREA DRAIN RIM=SEE SKATE PARK PLANS IE=908.00	15/C4.00
CB-1	CATCH BASIN RIM=SEE SKATE PARK PLANS IE=911.00	14/C4.00
CB-2	CATCH BASIN RIM=SEE SKATE PARK PLANS IE=908.00	14/C4.00
CB-3	CATCH BASIN RIM=SEE SKATE PARK PLANS IE=907.00	14/C4.00
CB-4	CATCH BASIN RIM=SEE SKATE PARK PLANS IE=908.00	14/C4.00
CB-5	CATCH BASIN RIM=SEE SKATE PARK PLANS IE=906.00	14/C4.00
CB-6	CATCH BASIN RIM=926.85 IE=921.74	14/C4.00
CB-7	CATCH BASIN RIM=927.38 IE=921.00	14/C4.00
CB-8	CATCH BASIN RIM=921.10 IE=917.50	14/C4.00
CB-9	CATCH BASIN RIM=SEE SKATE PARK PLANS IE=915.00	14/C4.00
CB-10	CATCH BASIN RIM=908.50 IE=905.00	14/C4.00
SDCO-1	STORMWATER CLEANOUT TO GRADE, IE=902.44	12/C4.00
SDCO-2	STORMWATER CLEANOUT TO GRADE, IE=918.54	12/C4.00
SDCO-3	STORMWATER CLEANOUT TO GRADE, IE=904.33	12/C4.00
TD-1	TRENCH DRAIN, 6"WIDE, S=0.0100	

SHEET LEGEND		
SD	STORM	
SS	SANITARY	
W	WATER	
PWR	POWER	
■	CATCH BASIN	14 C4.00
■	AREA DRAIN	15 C4.00
●	CLEANOUT	12 C4.00
○	MANHOLE	
▭	DETENTION PIPE	
●	DRYWELL	SEE PUMP TRACK PLANS

SHEET NOTES

- SEE SEPARATE PUBLIC WORK PERMIT PLANS C5.00-C5.02 FOR ALL WORK IN PUBLIC RIGHT OF WAY.

SANITARY SEWER SCHEDULE		
ITEM	DESCRIPTION	REFERENCE
SSPOC-1	SANITARY SEWER POINT OF CONNECTION, SIZE=4", IE=925.58 FOR BUILDING SEWER SEE PLUMBING,	
SSPOC-2	SANITARY SEWER POINT OF CONNECTION, CONNECT TO EXISTING 8" SANITARY LINE, IE=925.03	
AD-1	AREA DRAIN RIM=SEE SKATE PARK PLANS IE=904.84	15/C4.00
AD-2	AREA DRAIN RIM=SEE SKATE PARK PLANS IE=904.90	15/C4.00
AD-3	AREA DRAIN RIM=SEE SKATE PARK PLANS IE=904.25	15/C4.00
AD-4	AREA DRAIN RIM=SEE SKATE PARK PLANS IE=904.00	15/C4.00
AD-5	AREA DRAIN RIM=SEE SKATE PARK PLANS IE=904.09	15/C4.00
AD-6	AREA DRAIN RIM=SEE SKATE PARK PLANS IE=903.61	15/C4.00
AD-7	AREA DRAIN RIM=SEE SKATE PARK PLANS IE=908.00	15/C4.00
EX.SSMH-1	EXISTING SANITARY SEWER MANHOLE INSTALL 12" GRADE RING. RIM=930.64 IE IN (1"NW)=926.89 IE OUT (8"S)=925.31	
EX.SSMH-2	EXISTING SANITARY SEWER MANHOLE RIM=928.30 IE IN (8"SE)=924.27 IE OUT (8"N)=925.31	
SSCO-1	SANITARY SEWER CLEANOUT TO GRADE, IE=925.31	12/C4.00

WATER SCHEDULE		
ITEM	DESCRIPTION	REFERENCE
DCVA-1	DOUBLE CHECK VALVE ASSEMBLY, SIZE=1.5"	16/C4.00
DCVA-2	DOUBLE CHECK VALVE ASSEMBLY, SIZE=1.5" FOR IRRIGATION SYSTEM.	16/C4.00
IRRPOC	IRRIGATION POINT OF CONNECTION SEE L SHTS	

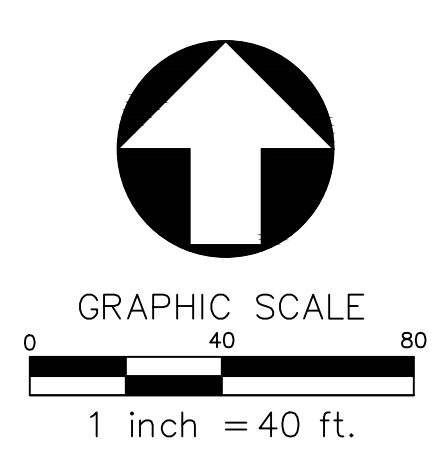
LANDSCAPE ARCHITECTS PC
lango . hansen
1100 NW Gilman #3B, Portland OR 97209 T 503.295.2437

REGISTERED PROFESSIONAL ENGINEER #8933
Allen Schmitz
SEPT. 8, 2011
RENEWAL DATE 6/30/2024

SANDY COMMUNITY CAMPUS PARK
CITY OF SANDY PARKS AND RECREATION
CITY OF SANDY
17225 SMITH AVE
SANDY, OR 97055

BID SET

REVISIONS
ADDENDUM #2 12/06/2023

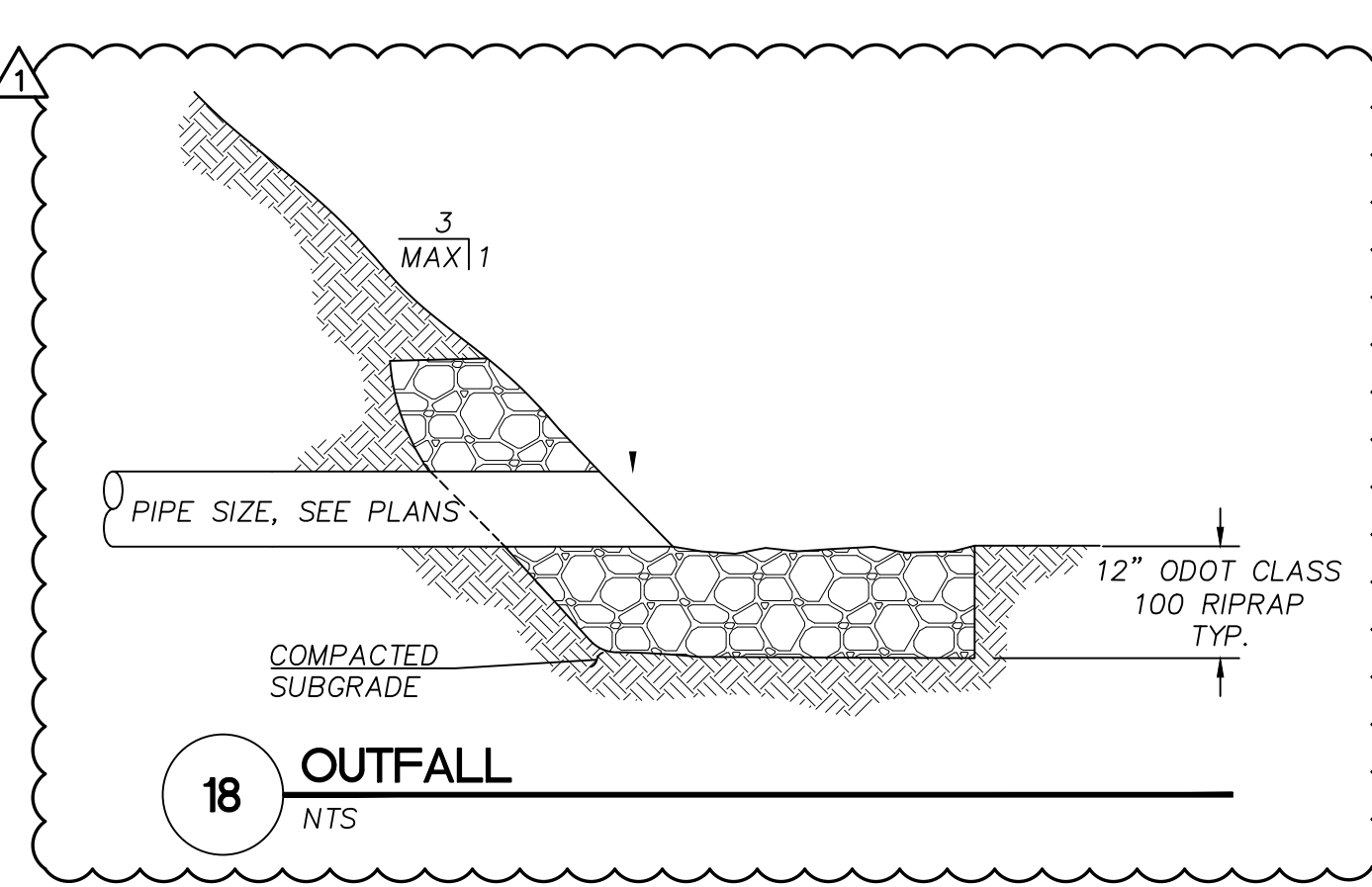


H Humber Design Group, Inc.
Civil Engineering • 503.946.6690 • hdbgdx.com

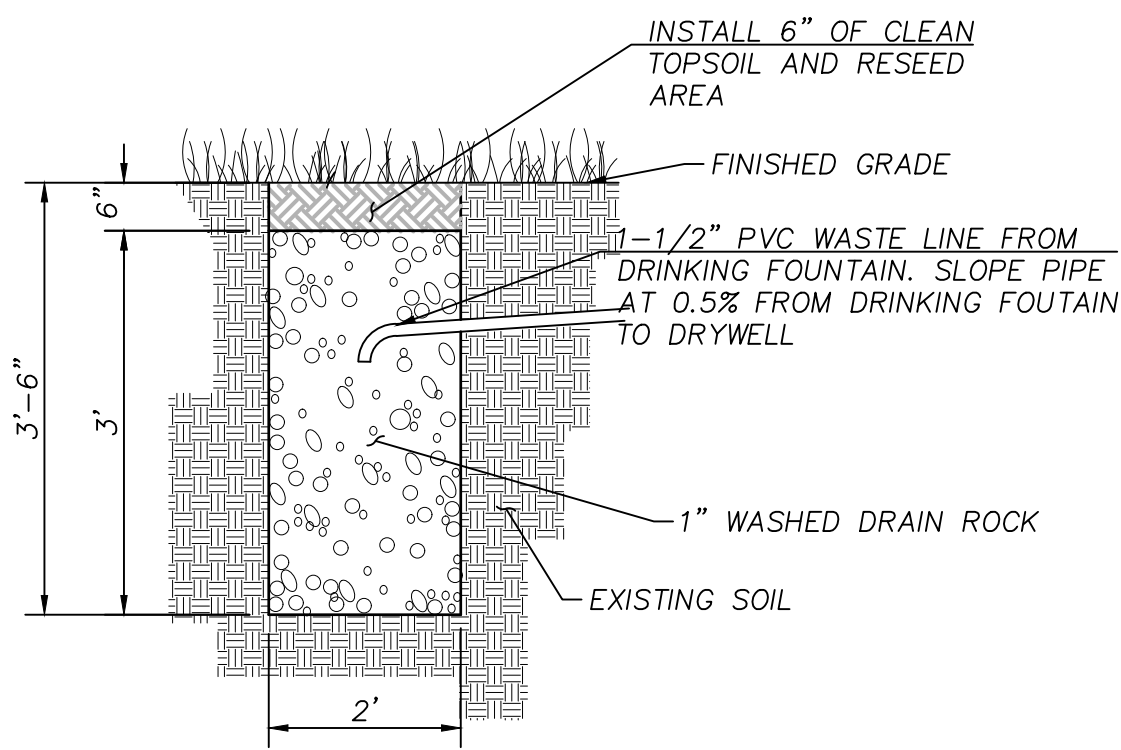
SCALE AS NOTED
DRAWN BY MCS
DATE 11.16.23
PROJECT NO. 2239

UTILITY PLAN

C3.00

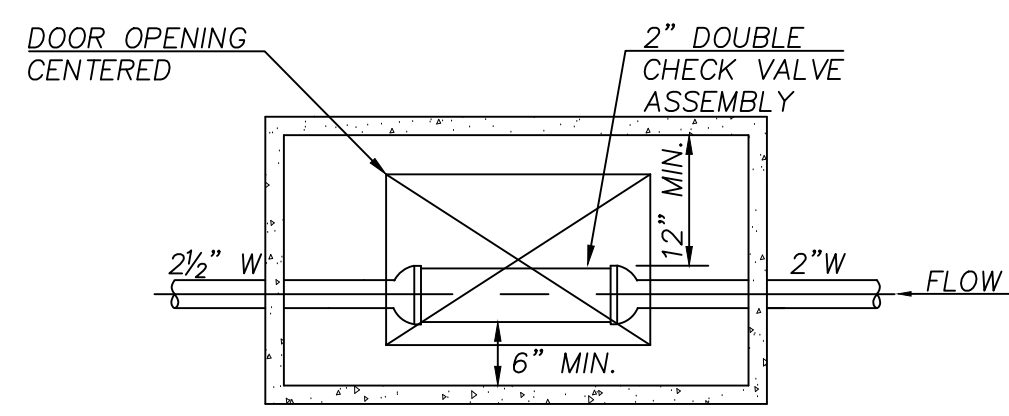


18 OUTFALL
NTS

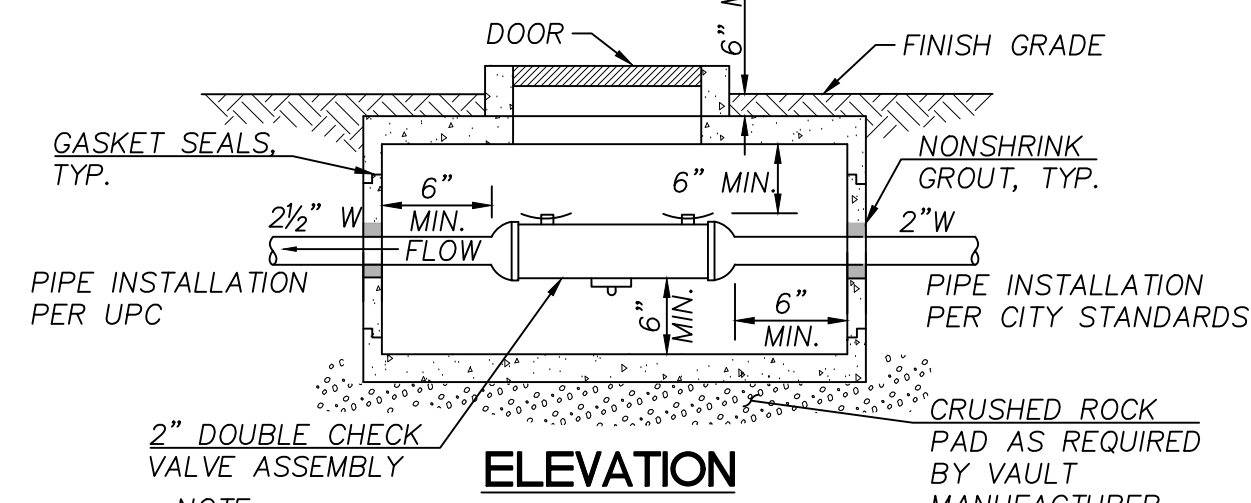


- NOTES:
1. LOCATE DRYWELL A MINIMUM OF 36" AWAY FROM THE DRINKING FOUNTAIN.

17 DRINKING FOUNTAIN DRYWELL
NTS



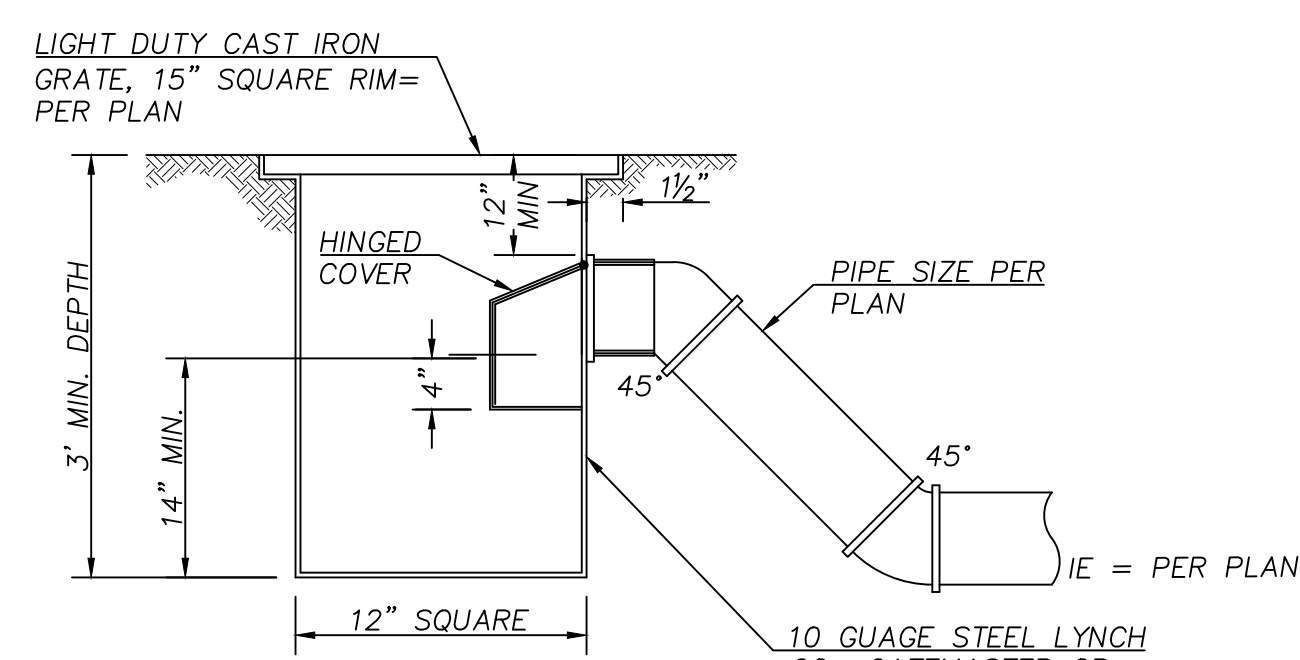
PLAN



ELEVATION

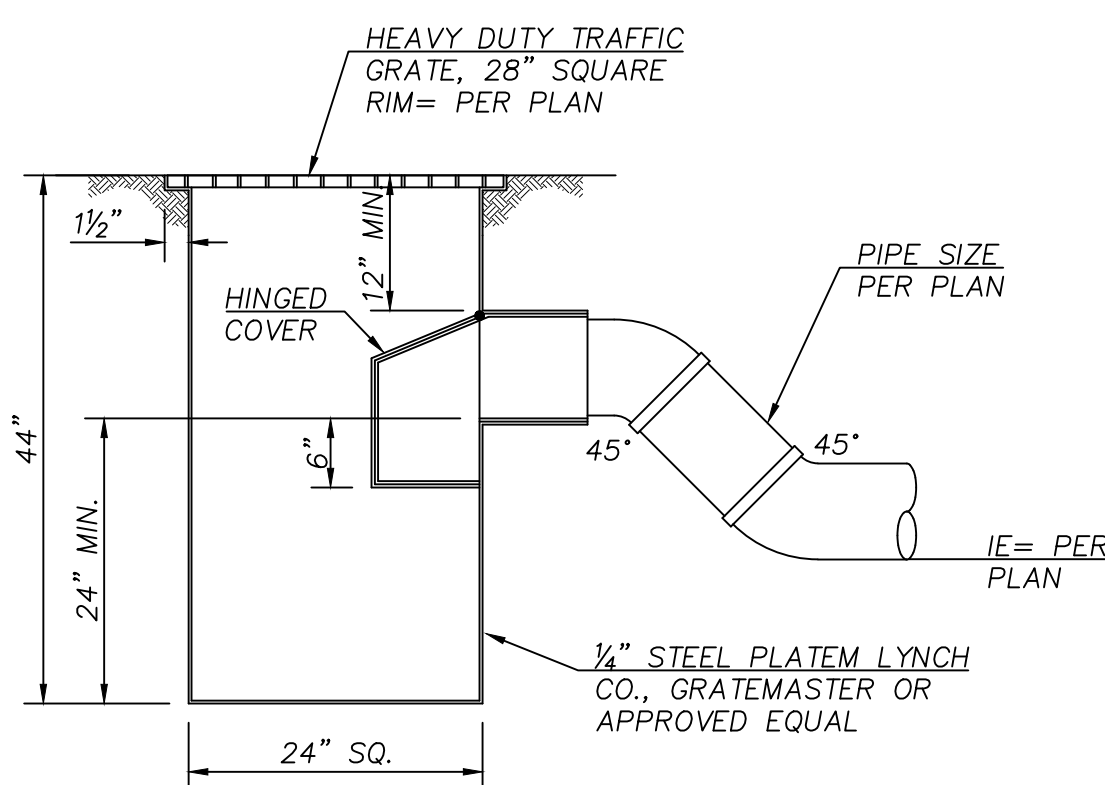
- NOTE:
1. THE CONTRACTOR SHALL BE RESPONSIBLE FOR SIZING OF UTILITY VAULT TO ACCOMMODATE THE VALVE EQUIPMENT THE CONTRACTOR SELECTS. VAULT SIZE AS NOTED FOR REFERENCE ONLY AND IS NOT GUARANTEED TO MEET REQUIREMENTS.

16 DOUBLE CHECK VALVE ASSEMBLY (DCVA)
NTS



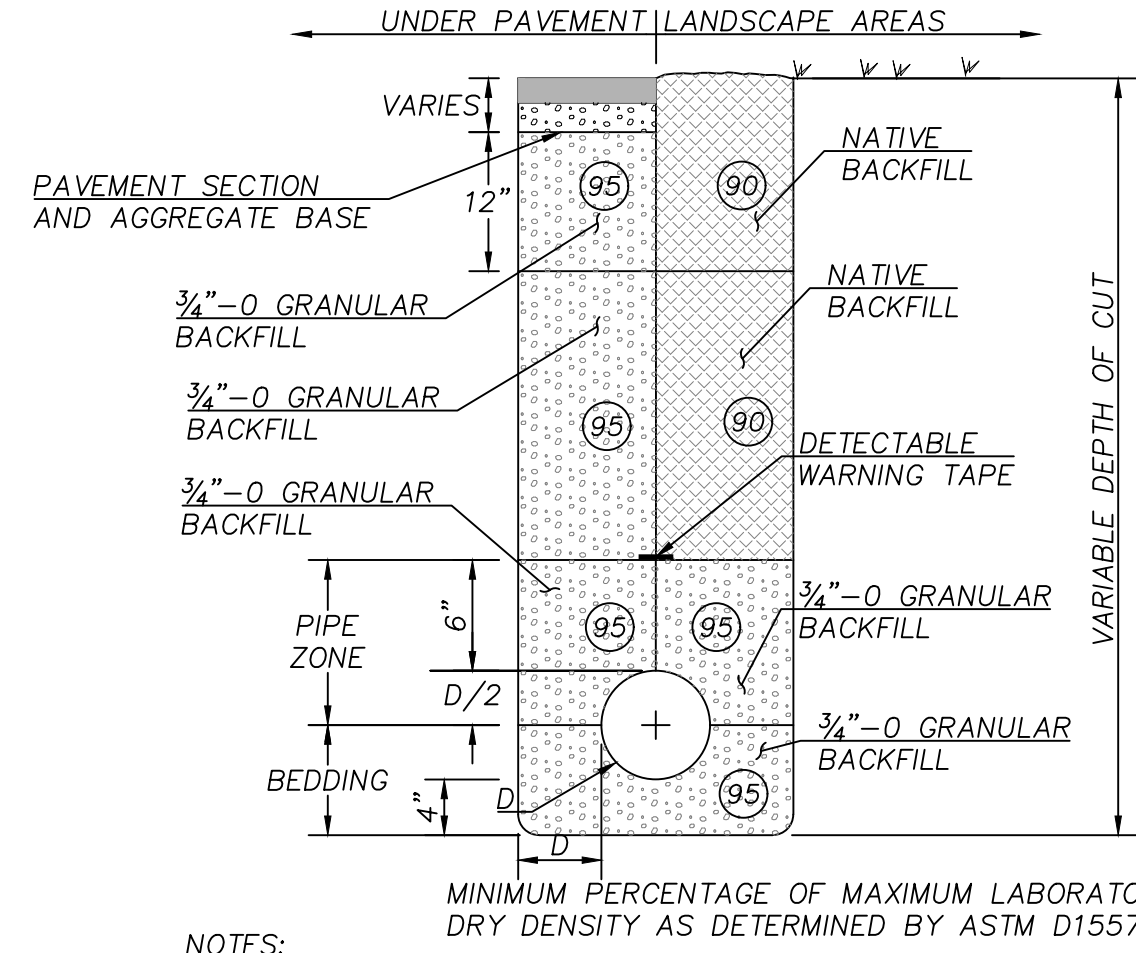
- NOTES:
1. ALL STEEL WELDED CONSTRUCTION.
 2. COATED INSIDE AND OUT WITH ASPHALTUM PAINT.
 3. TRAP TO INCLUDE CLEANOUT.

15 AREA DRAIN
NTS



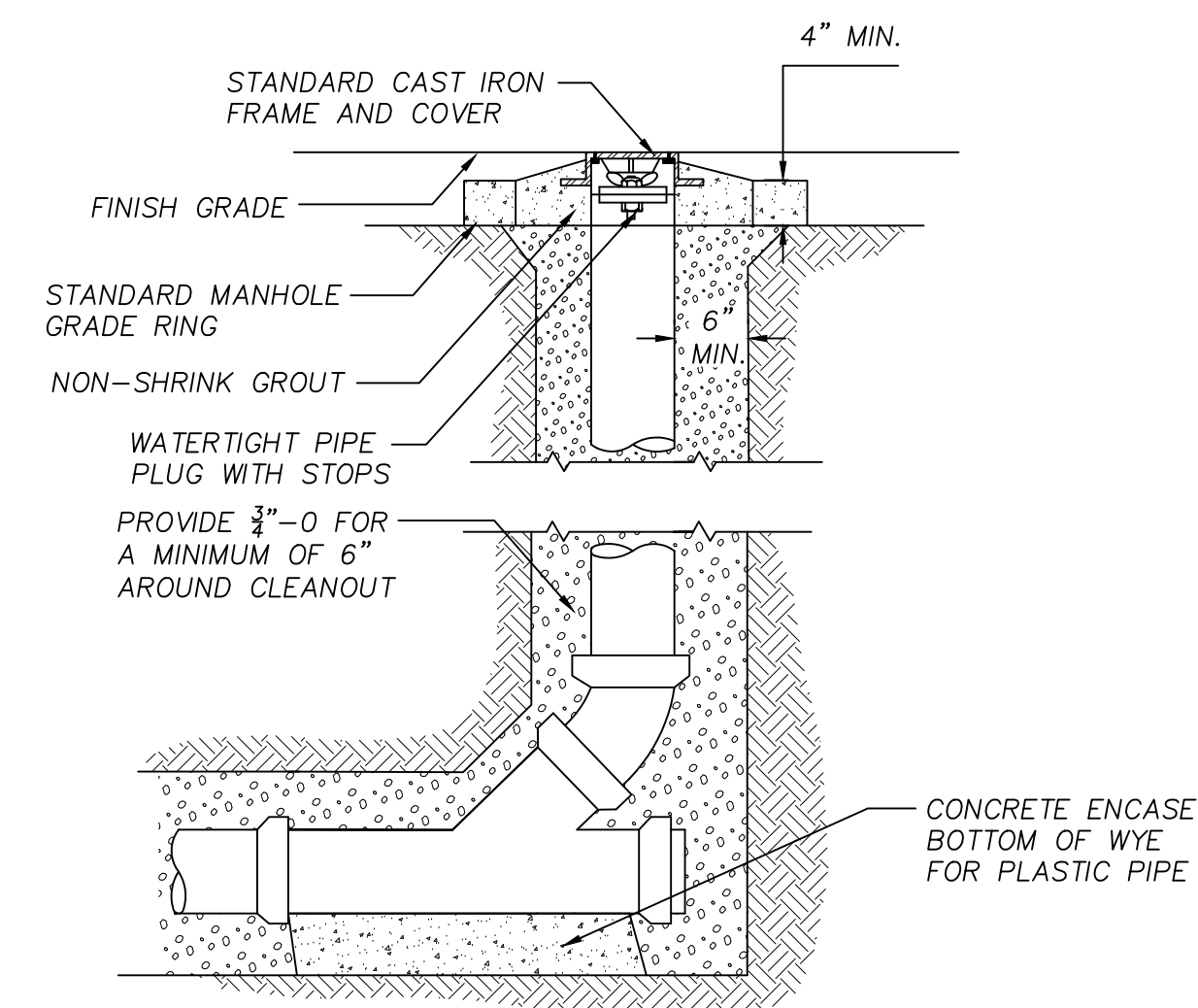
- NOTES:
1. ALL STEEL WELDED CONSTRUCTION.
 2. COATED INSIDE AND OUT WITH ASPHALTUM PAINT.
 3. TRAP TO INCLUDE CLEANOUT.

14 CATCH BASIN
NTS



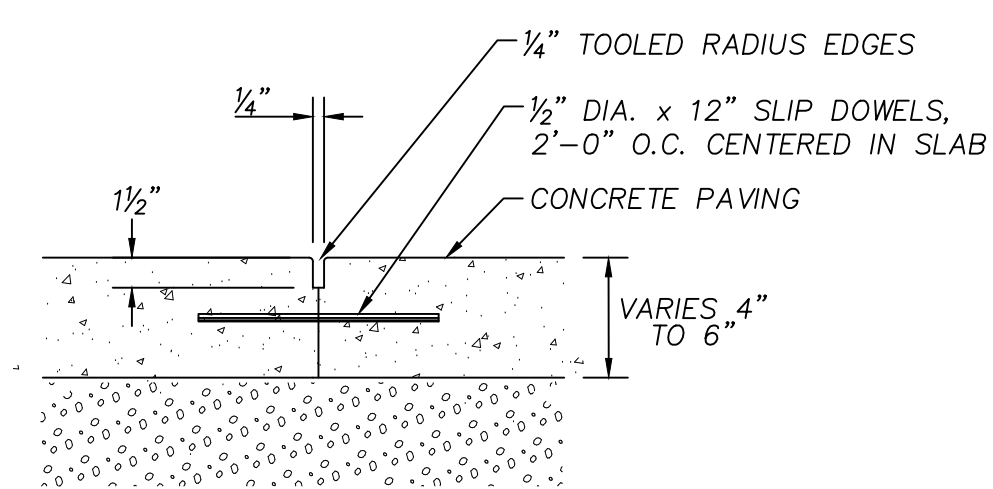
- NOTES:
1. ALL CUT EDGES SHALL BE SAND SEALED WITH CRS-1 OR CRS-2 EMULSIFIED ASPHALT OR EQUAL.
 2. THIS TRENCH BACKFILL REQUIREMENT APPLIES TO ALL UTILITIES.
 3. LIGHTLY COMPACT WITHIN TWO DIAMETERS OR 18 INCHES, WHICHEVER IS GREATER, ABOVE BREAKABLE CONDUITS.

13 TRENCH BACKFILL
NTS



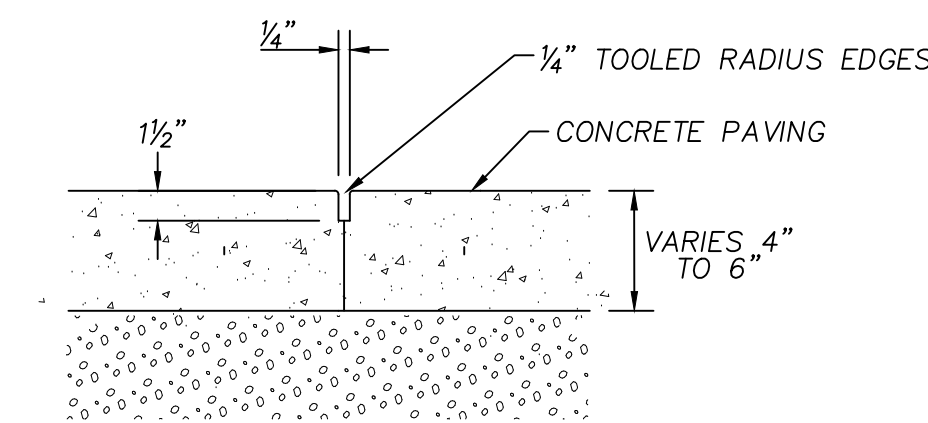
- NOTE:
1. CONCRETE ENCASE ENTIRE WYE SECTION AND 45° BEND FOR CONCRETE PIPE.

12 CLEANOUT
NTS



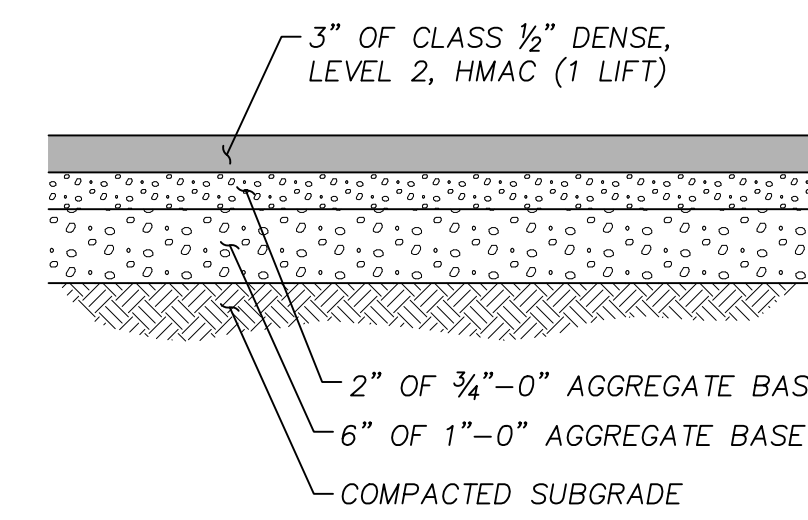
- NOTE:
1. INSTALL DOWLS 2'-0" O.C. WHERE EXISTING CONC. PAVING ABUTS PROPOSED CONC. PAVING.

11 CONSTRUCTION JOINT
NTS



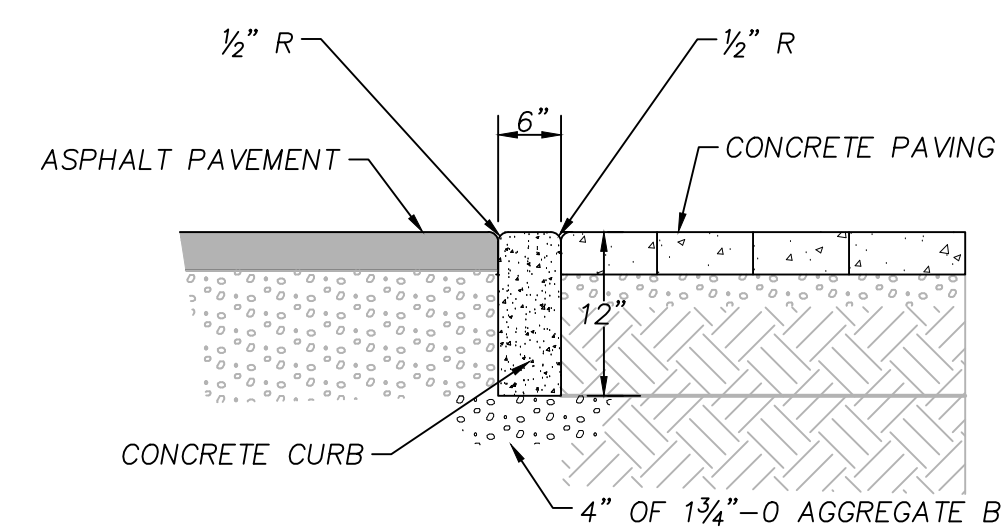
- NOTE:
1. NO SHINERS ON TOOLED JOINTS.
 2. PLACE SCORE JOINTS AT MAXIMUM 15.0' ON CENTER.

10 SCORE JOINT
NTS



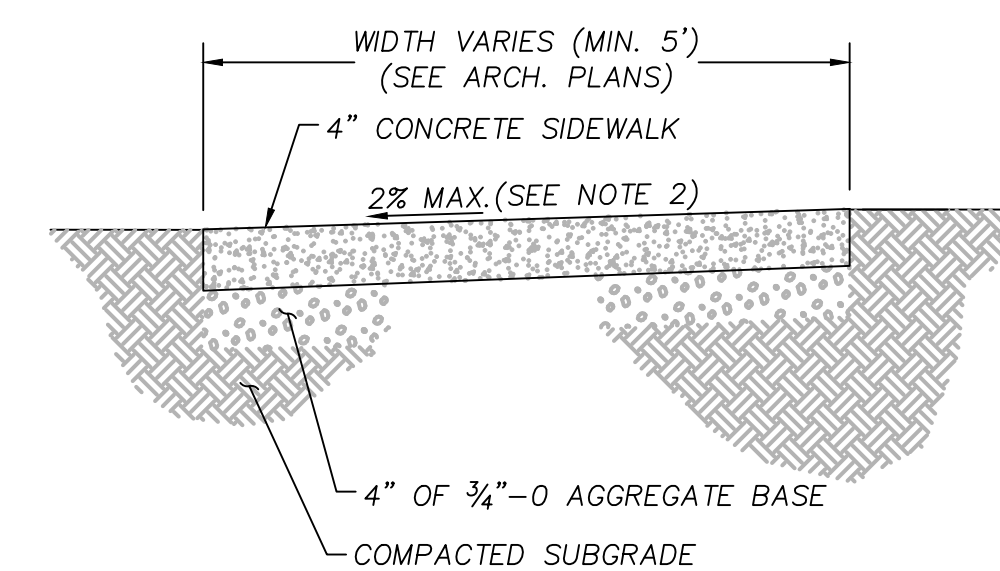
- NOTES:
1. AGGREGATE BASE AND THE UPPER 12" OF THE SUBGRADE SHALL BE COMPACTED TO 95% OF THE MAXIMUM DRY DENSITY DETERMINED IN ACCORDANCE WITH ASTM D1557.
 2. AC PAVEMENT SHALL BE COMPACTED TO 91% OF THE RICE DENSITY OF THE MIX.

9 ASPHALT PAVEMENT
NTS



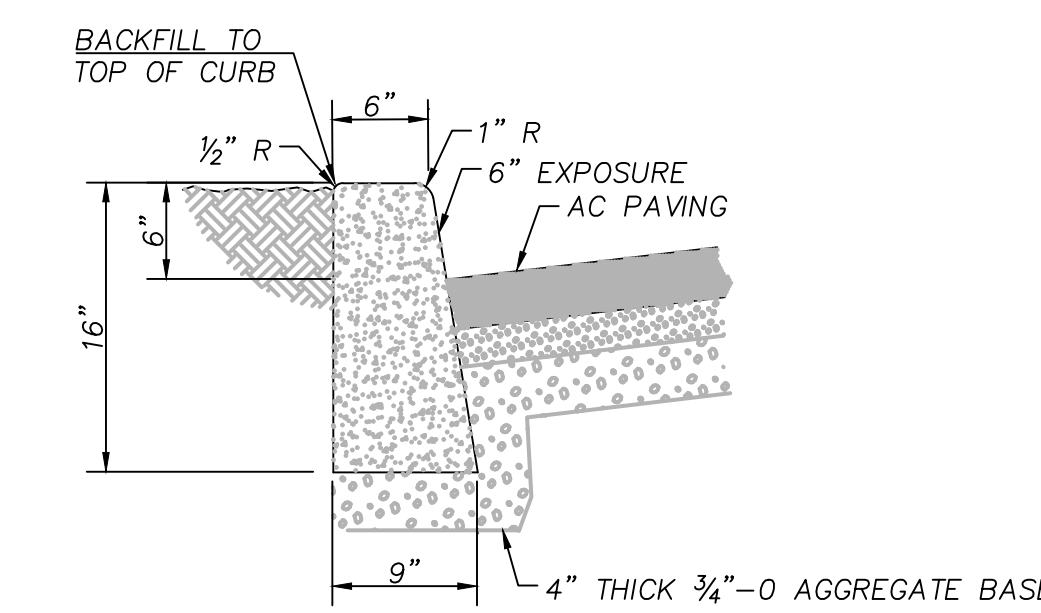
- NOTES:
1. SET ADJACENT SURFACES FLUSH WITH CURB.

8 FLUSH CURB - 6" WIDE
NTS

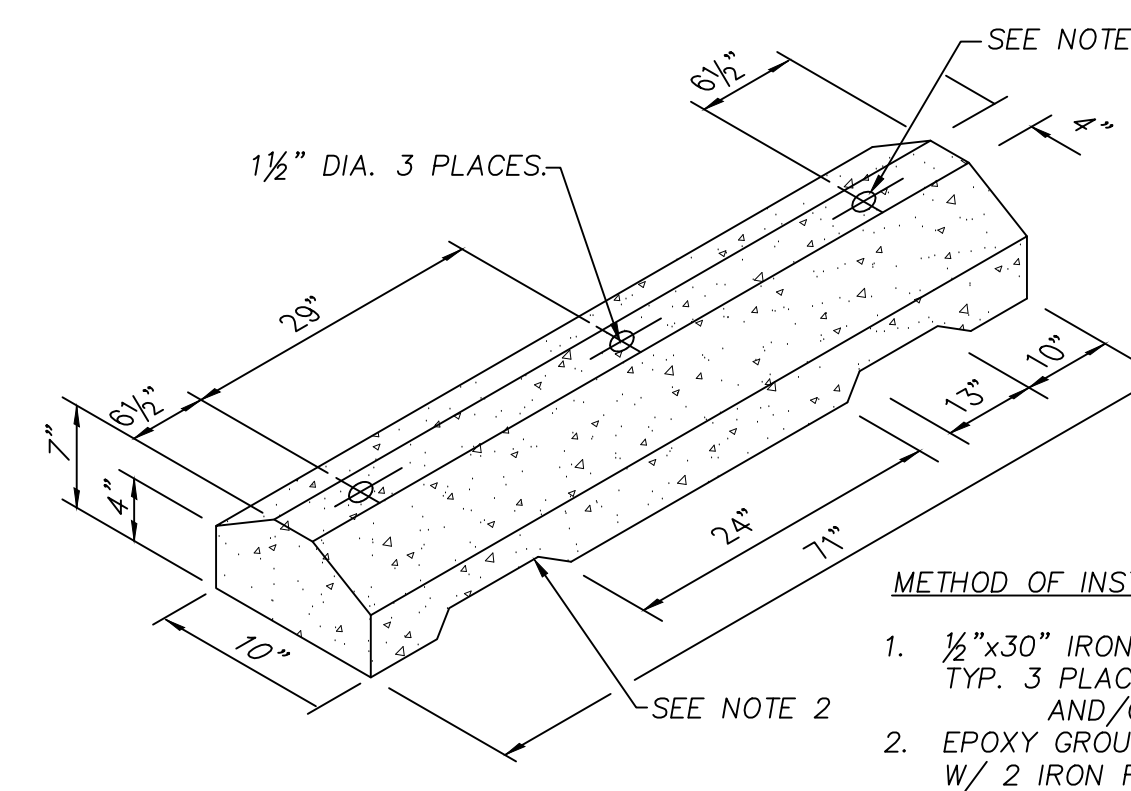


- NOTES:
1. CONCRETE SHALL BE 4000 PSI, SLUMP RANGE 3" TO 5".
 2. 2% MAX CONSTRUCTED. 1.5% DESIGN UNLESS OTHERWISE NOTED.

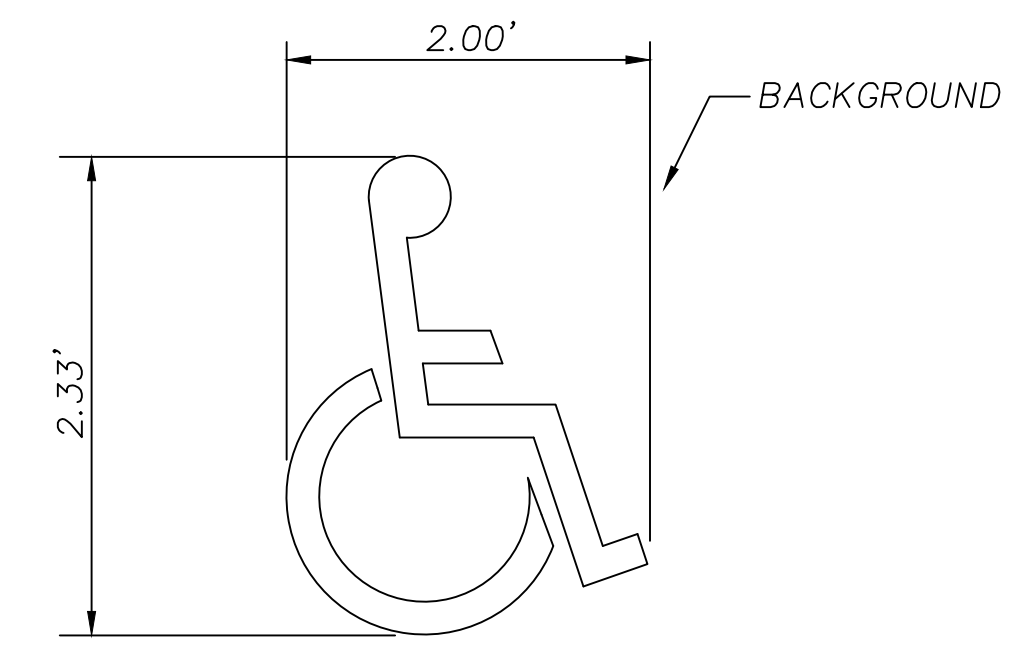
7 CONCRETE SIDEWALK
NTS



6 STANDARD CONCRETE CURB
NTS

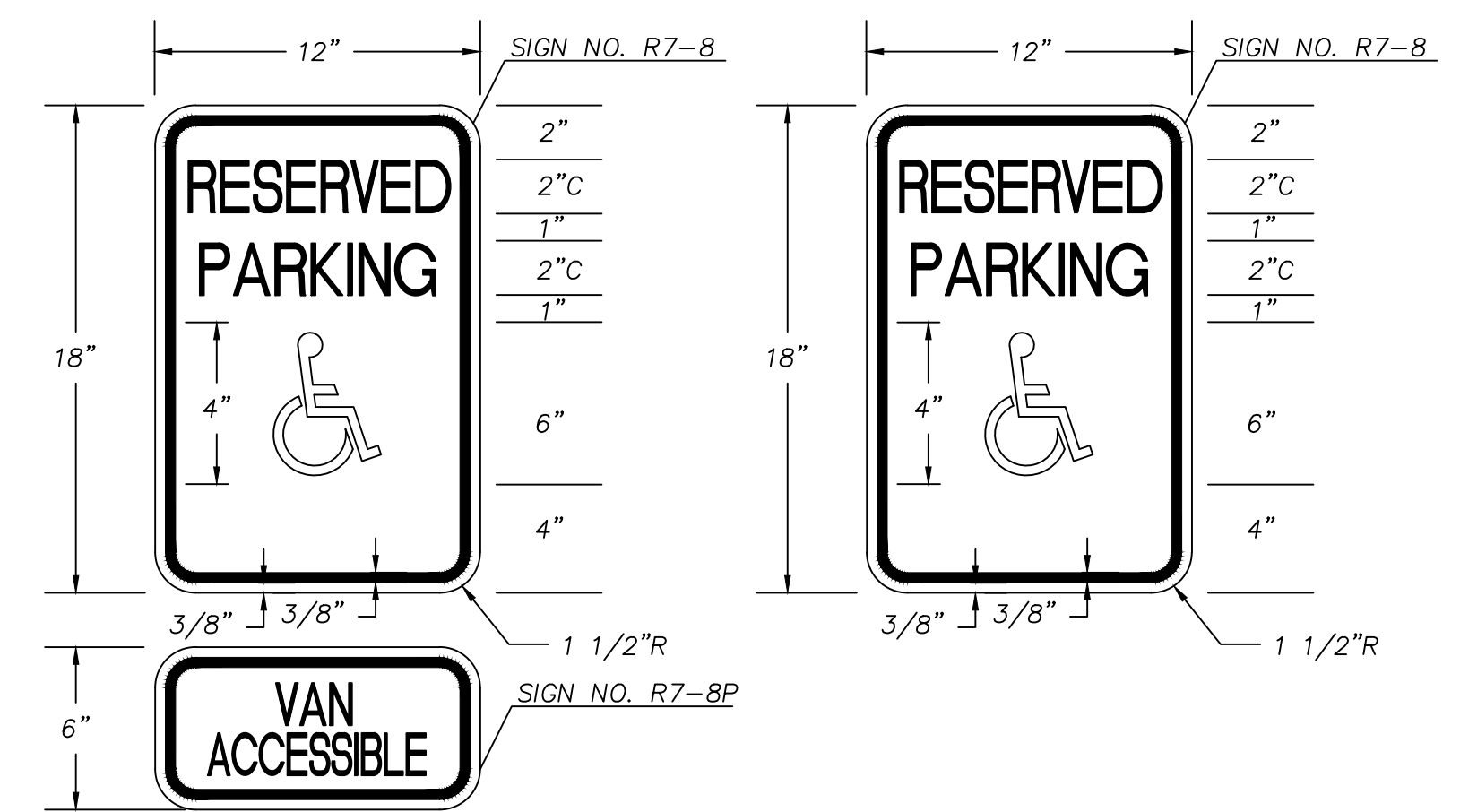


5 PRECAST CONCRETE WHEELSTOP
NTS



- NOTES:
1. PAVEMENT MARKING BACKGROUND: OPTIONAL: BLUE, RETROREFLECTIVE
 2. PAVEMENT MARKING STENCIL: WHITE, RETROREFLECTIVE

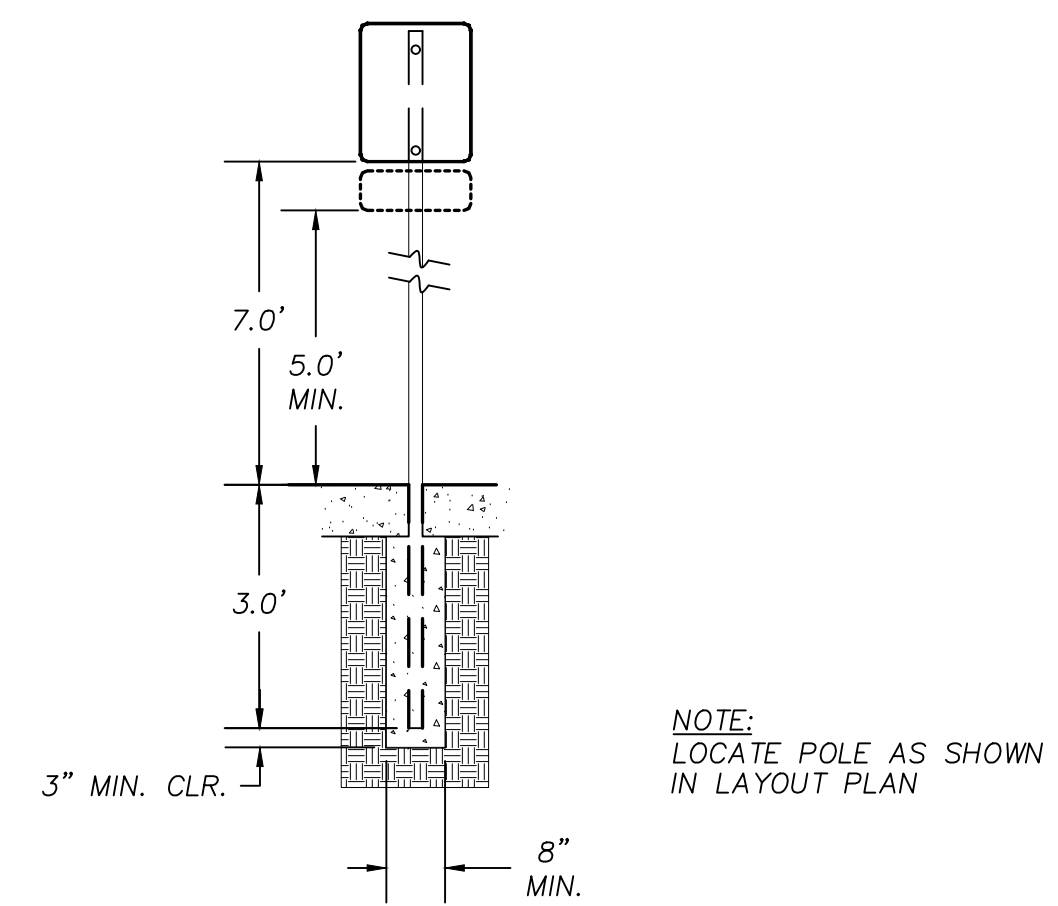
4 ACCESSIBLE PARKING EMBLEM
NTS



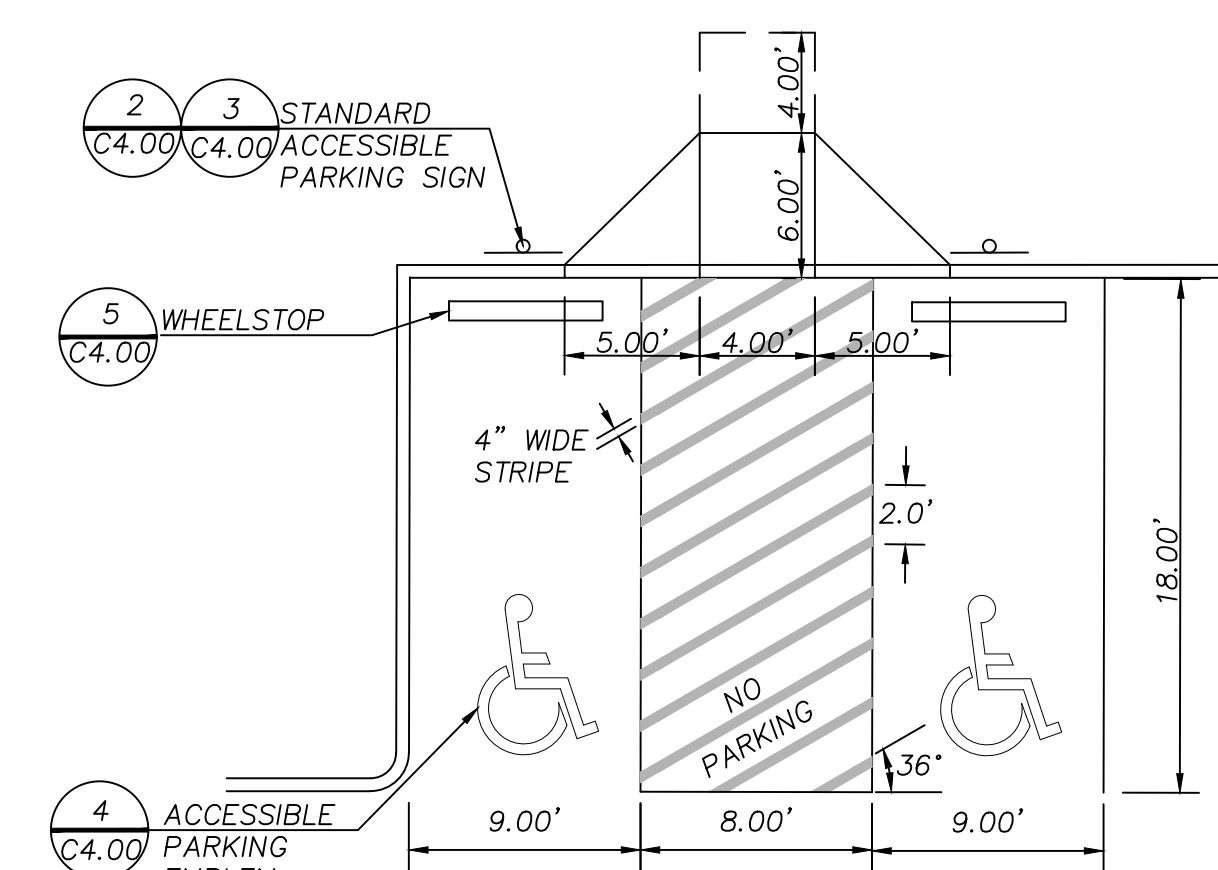
VAN ACCESSIBLE **STANDARD**

- NOTES:
1. SIGN BACKGROUND: WHITE, RETROREFLECTIVE SHEETING
 2. SIGN LEGEND: GREEN, RETROREFLECTIVE SHEETING
 3. SIGN SYMBOL (STANDARD ONLY): WHITE ON BLUE, RETROREFLECTIVE SHEETING

3 ACCESSIBLE PARKING SIGN
NTS



2 ACCESSIBLE SIGN POST
NTS

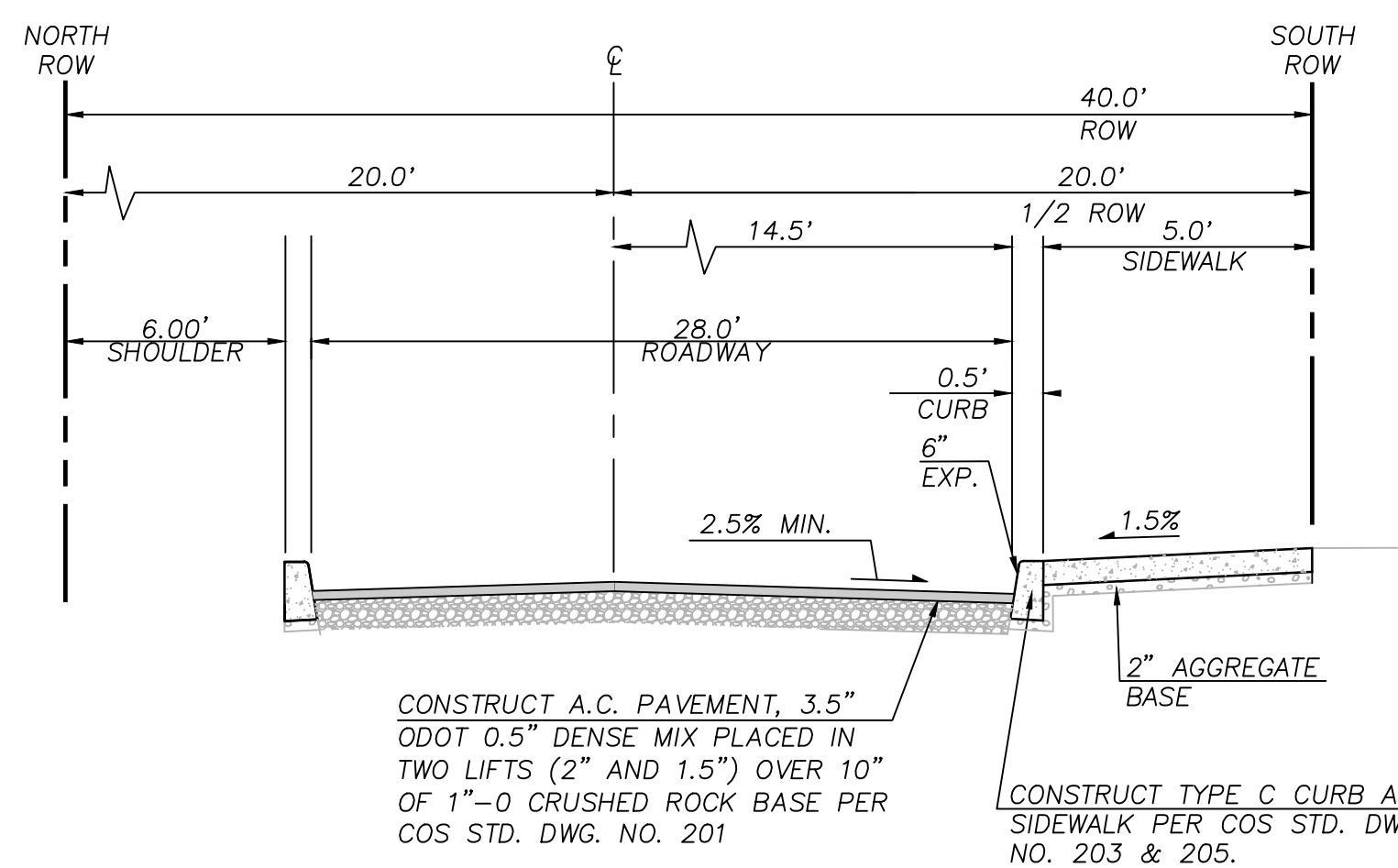
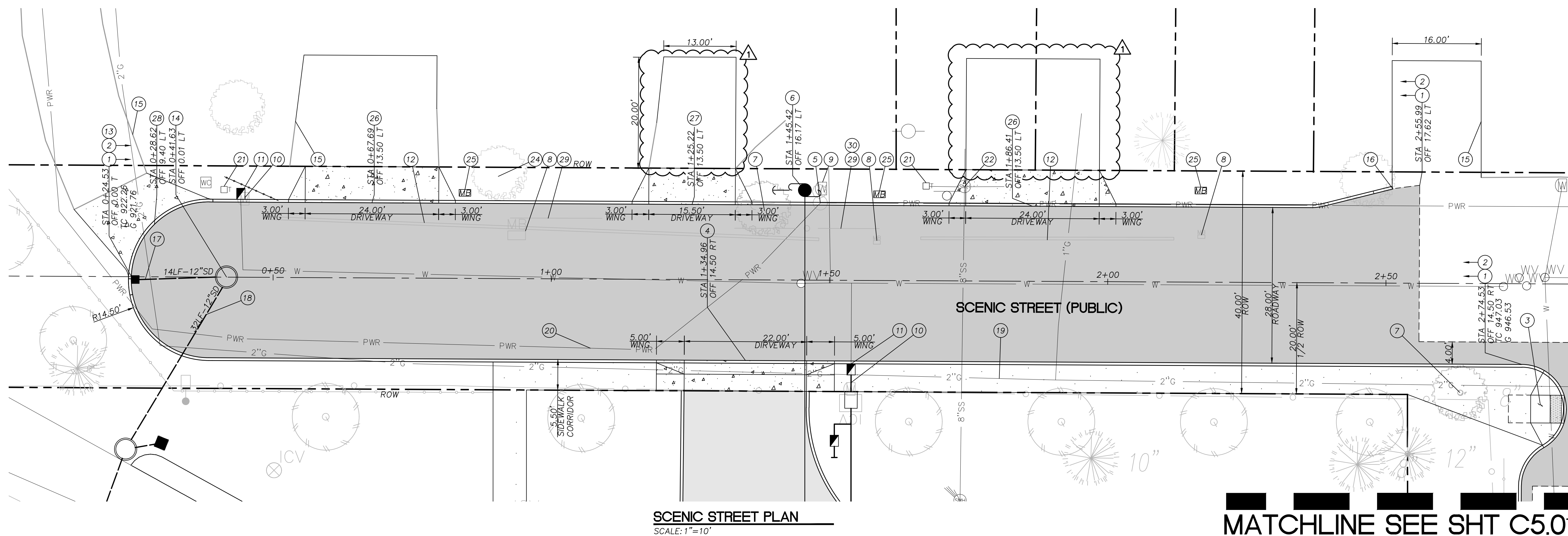
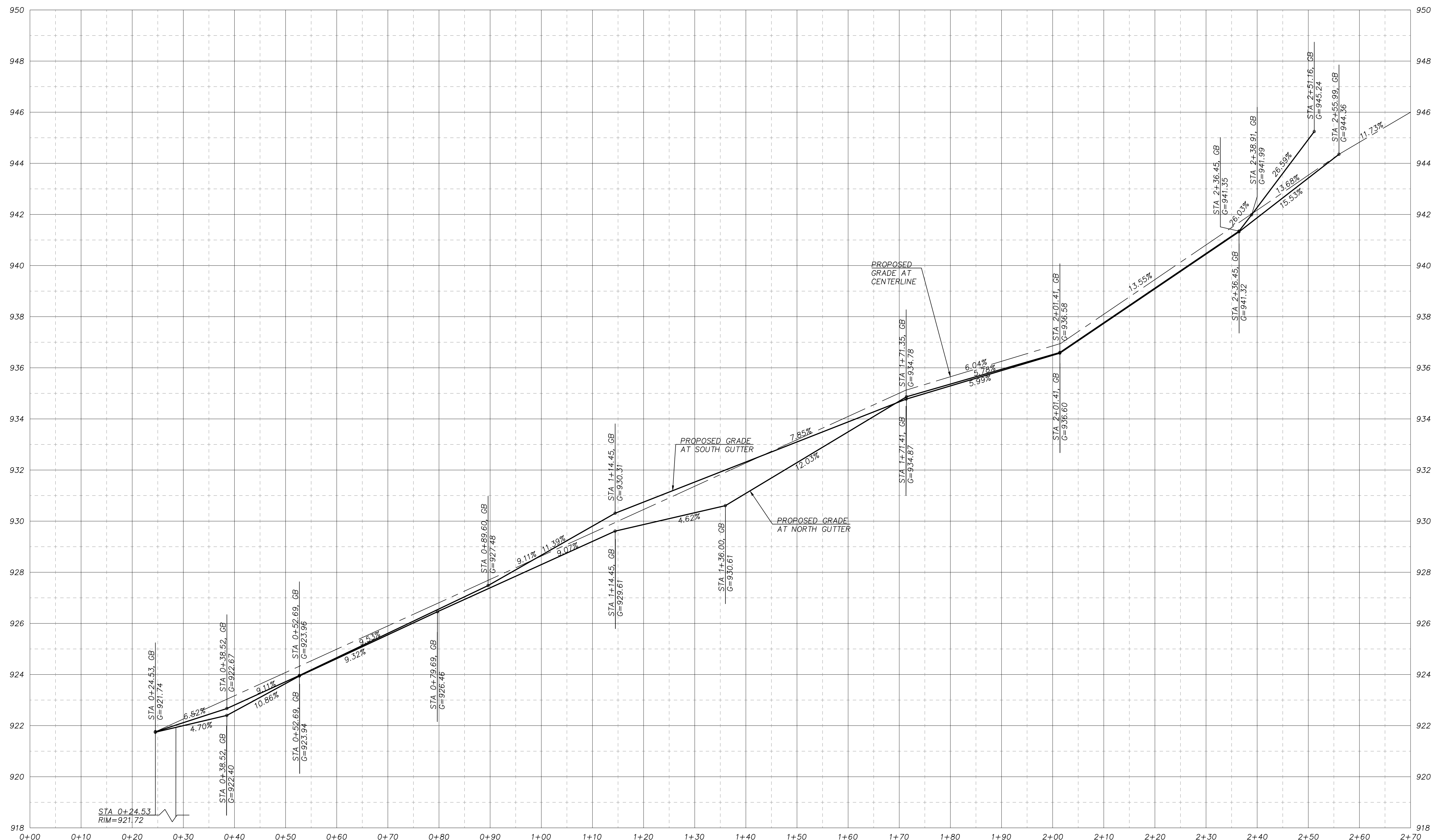


1 ACCESSIBLE PARKING LAYOUT
NTS

CONSTRUCTION NOTES

- 1 CONSTRUCT A.C. PAVEMENT PER TYPICAL SECTION, DETAIL 1, THIS SHEET, AND PER COS STD. DWG. NO. 201 ON SHEET C5.02.
- 2 CONSTRUCT CONCRETE TYPE C CURB AND SIDEWALK PER COS STD. DWG. NO. 203 & 205 AND TYPICAL SECTION DETAIL 1, THIS SHEET.
- 3 CONSTRUCT ACCESSIBLE CURB RAMP PER COS STD. DWG. NO. 206 ON SHEET C5.02. ENTIRE CONCRETE ADA RAMP AREA (INCLUDING CURBS, RAMPS, LANDINGS, AND FLARES/WINGS) TO BE CONSTRUCTED MONOLITHICALLY.
- 4 CONSTRUCT 22' DRIVEWAY WIDE, 3/4" LIP CONCRETE DRIVEWAY PER COS STD. DWG. NO. 208 ON SHEET C5.02.
- 5 REMOVE EXISTING WOOD UTILITY POLE AND GUY WIRE. COORDINATE WITH PGE.
- 6 INSTALL NEW WOOD POWER POLE AND GUY WIRE. COORDINATE WITH PGE.
- 7 REMOVE EXISTING STREET TREE PRIOR TO PGE UTILITY WORK.
- 8 RELOCATE EXISTING MAIL BOX TO NEW LOCATION ADJACENT TO EXISTING DRIVEWAY.
- 9 PROTECT EXISTING WATER METER AND ASSOCIATED PIPING.
- 10 RELOCATE EXISTING WATER METER.
- 11 INSTALL NEW WATER METER, UNDER SEPARATE PERMIT. COORDINATE WITH CITY OF SANDY.
- 12 REMOVE EXISTING CULVERT.
- 13 CONSTRUCT NEW CAST-IN-PLACE CONCRETE G-2 INLET PER COS STD. DWG. NO. 305C ON SHEET C5.02.
G=921.74
RIM=921.72
IE=918.70
- 14 CONSTRUCT NEW STORM MANHOLE (SDMH-1) PER COS STD. DWG. NO. 315 ON SHEET C5.02.
G=923.32
RIM=923.32
IE (IN,W)=918.43
IE (OUT,S)=918.05
- 15 PROTECT EXISTING ASPHALT DRIVEWAY. SAWCUT CLEAN EDGE.
- 16 CONSTRUCT 4' CURB TAPER.
- 17 CONSTRUCT 14LF OF 12" STORM LATERAL TO NEW PUBLIC STORM MANHOLE. S=0.0200 MIN.
- 18 CONSTRUCT 38LF OF 12" STORM LATERAL. S=0.0200 MIN.
- 19 PROTECT EXISTING GAS LINE.
- 20 PROTECT EXISTING POWER LINE.
- 21 PROTECT EXISTING TELECOMMUNICATION PEDESTAL.
- 22 PROTECT EXISTING SANITARY SEWER MANHOLE.
- 23 REMOVE EXISTING STREET NAME SIGN.
- 24 PROTECT EXISTING TREE, COORDINATE WITH ARBORIST DURING CURB CONSTRUCTION.
- 25 REINSTALL EXISTING MAIL BOX.
- 26 CONSTRUCT 24' DRIVEWAY WIDE, 3/4" LIP CONCRETE DRIVEWAY PER COS STD. DWG. NO. 208A ON SHEET C5.02.
- 27 CONSTRUCT 15.5' DRIVEWAY WIDE, 3/4" LIP CONCRETE DRIVEWAY PER COS STD. DWG. NO. 208A ON SHEET C5.02.
- 28 CONSTRUCT 22.5' DRIVEWAY WIDE, 3/4" LIP CONCRETE DRIVEWAY PER COS STD. DWG. NO. 208A ON SHEET C5.02.
- 29 REMOVE EXISTING FENCE AND TURN OVER TO OWNER.
- 30 REINSTALL HOUSE ADDRESS NUMBER.

SHEET LEGEND	
	PUBLIC CONCRETE SIDEWALK
	PUBLIC ASPHALT PAVING
	PUBLIC CONCRETE DRIVEWAY
	LANDSCAPING SEE LANDSCAPE PLANS
	STANDARD CONCRETE CURB
	SAWCUT
	MAILBOX
	TELCO. PEDESTAL
	CATCH BASIN



LANDSCAPE ARCHITECTS PC
lango . hansen
1100 nw glisan #3B portland OR 97209 T 503.295.2437



SANDY COMMUNITY CAMPUS PARK
CITY OF SANDY PARKS AND RECREATION
CITY OF SANDY
17225 SMITH AVE
SANDY, OR 97055

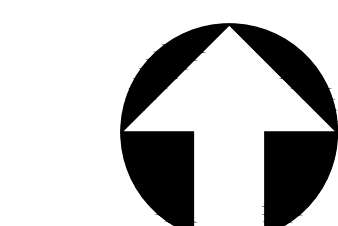
BID SET

REVISIONS
ADDENDUM #2 12/06/2023

SCALE AS NOTED
DRAWN BY MCS
DATE 11.16.23
PROJECT NO. 2239

SCENIC STREET
PLAN AND PROFILE

C5.00



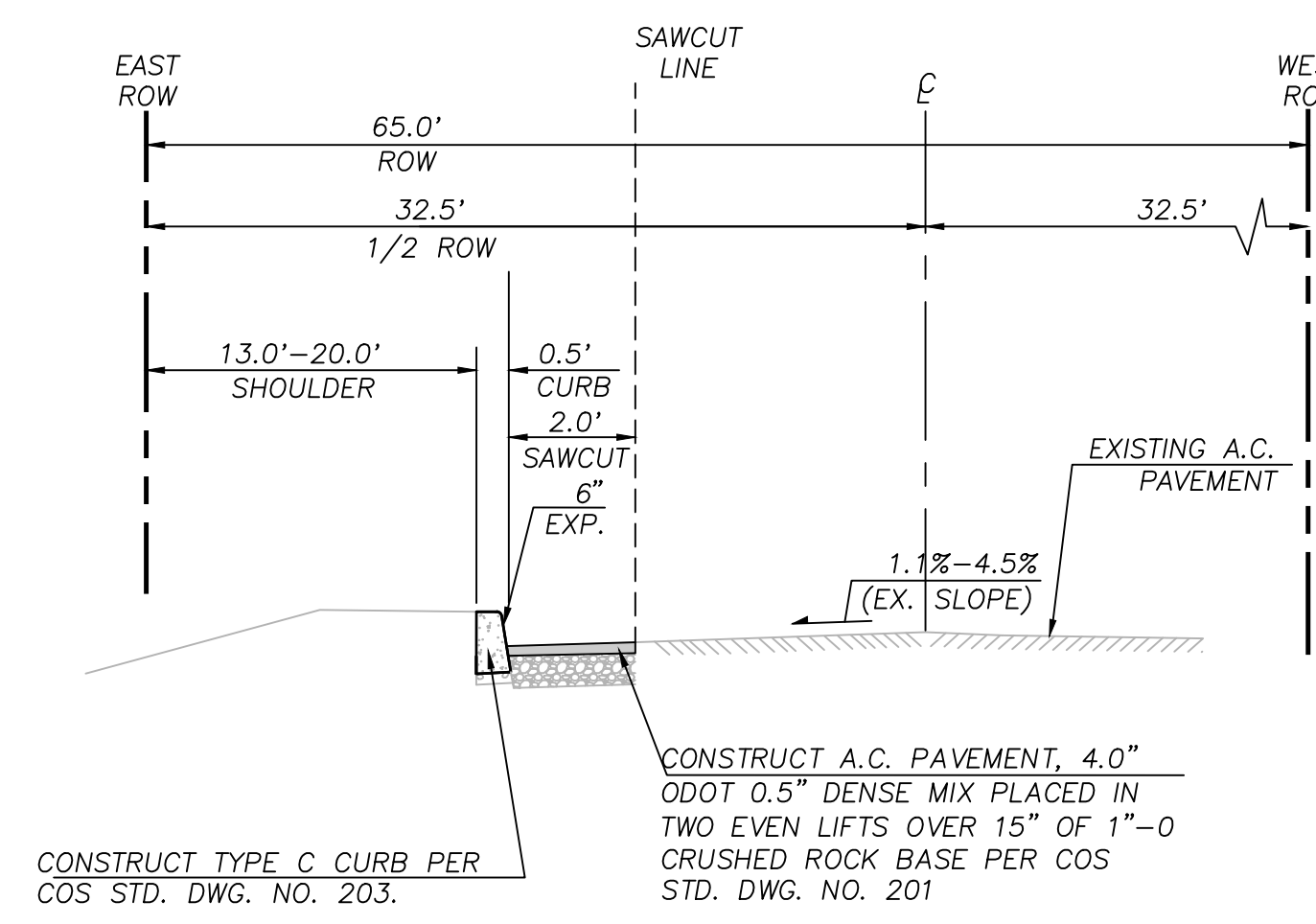
GRAPHIC SCALE
1 inch = 10 ft.



MATCHLINE SEE SHT C5.01

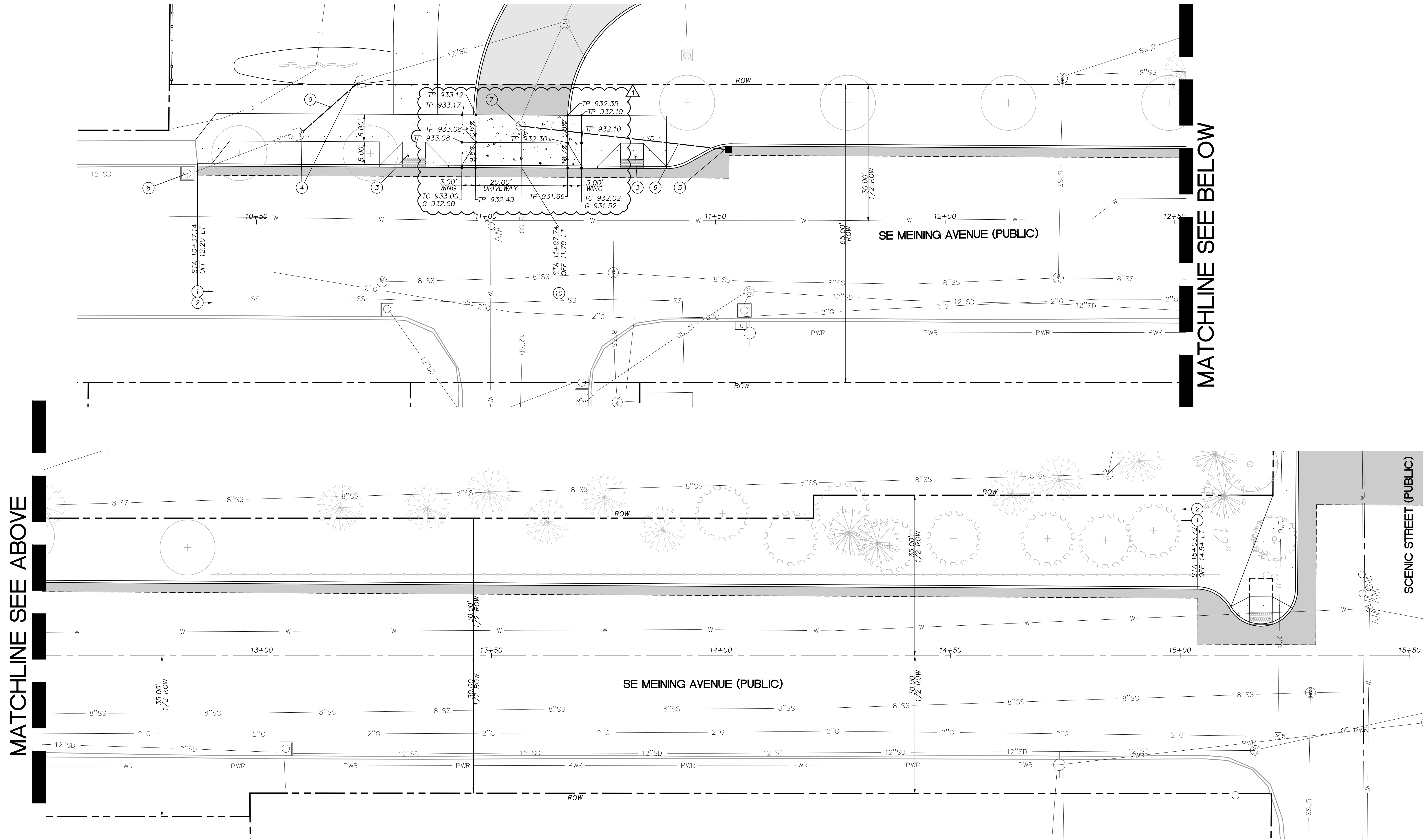
CONSTRUCTION NOTES

- 1 CONSTRUCT A.C. PAVEMENT PER TYPICAL SECTION, DETAIL 1, THIS SHEET, AND PER COS STD. DWG. NO. 201 ON SHEET C5.02.
- 2 CONSTRUCT CONCRETE TYPE C CURB PER COS STD. DWG. NO. 203 ON SHEET C5.02, AND TYPICAL SECTION DETAIL 1, THIS SHEET.
- 3 CONSTRUCT ACCESSIBLE CURB RAMP PER COS STD. DWG. NO. 206 ON SHEET C5.02, ENTIRE CONCRETE ADA RAMP AREA (INCLUDING CURBS, RAMPS, LANDINGS, AND FLARES/WINGS) TO BE CONSTRUCTED MONOLITHICALLY.
- 4 PROTECT EXISTING CULVERT.
- 5 CONSTRUCT NEW CAST-IN-PLACE CONCRETE G-2 INLET PER COS STD. DWG. NO. 305C ON SHEET C5.02.
RIM=929.47
G=929.47
IE=925.47
- 6 CONSTRUCT 45LF 12" STORM LATERAL TO NEW PUBLIC STORM MANHOLE. S=0.0200 MIN.
- 7 CONNECT TO EXISTING PUBLIC STORM MANHOLE.
RIM=931.70
IE(8",NW)=917.62
IE(8",E)=917.82
- 8 PROTECT EXISTING PUBLIC STORM INLET.
- 9 CONSTRUCT 16LF 12" STORM LATERAL. CONNECT EXISTING CULVERTS, S=0.0200 MIN.
- 10 CONSTRUCT 20' DRIVEWAY WIDE, 3/4" LIP CONCRETE DRIVEWAY PER COS STD. DWG. NO. 208 ON SHEET C5.02.



SHEET LEGEND		
	PRIVATE ASPHALT PAVING	
	PRIVATE CONCRETE SIDEWALK	
	PUBLIC CONCRETE SIDEWALK	
	PUBLIC ASPHALT PAVING	
	PUBLIC CONCRETE DRIVEWAY	
	LANDSCAPING	SEE LANDSCAPE PLANS
	STANDARD CONCRETE CURB	
	SAWCUT	

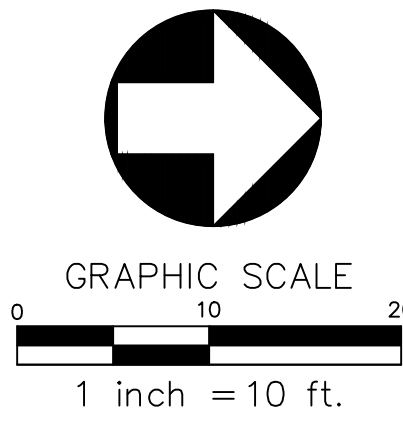
1 SE MEINING AVENUE TYPICAL SECTION (COLLECTOR)
NTS



SE MEINING AVENUE PLAN
SCALE: 1"=10'

MATCHLINE SEE ABOVE

MATCHLINE SEE BELOW



lango . hansen
 LANDSCAPE ARCHITECTS PC
 1100 NW GLISAN #3B PORTLAND OR 97209 T 503.295.2437



SANDY COMMUNITY CAMPUS PARK
 CITY OF SANDY
 17225 SMITH AVE
 SANDY, OR 97055

BID SET
 REVISIONS
 ADDENDUM #2 12/06/2023

SCALE AS NOTED
 DRAWN BY MCS
 DATE 11.16.23
 PROJECT NO. 2239

SE MEINING AVENUE PLANS
C5.01

