

COMMUNITY CAMPUS PARK DEVELOPMENT PLAN FACT SHEET

We're re-envisioning the Sandy Community Campus park property and want to know how to make it uniquely yours.

PROJECT OVERVIEW

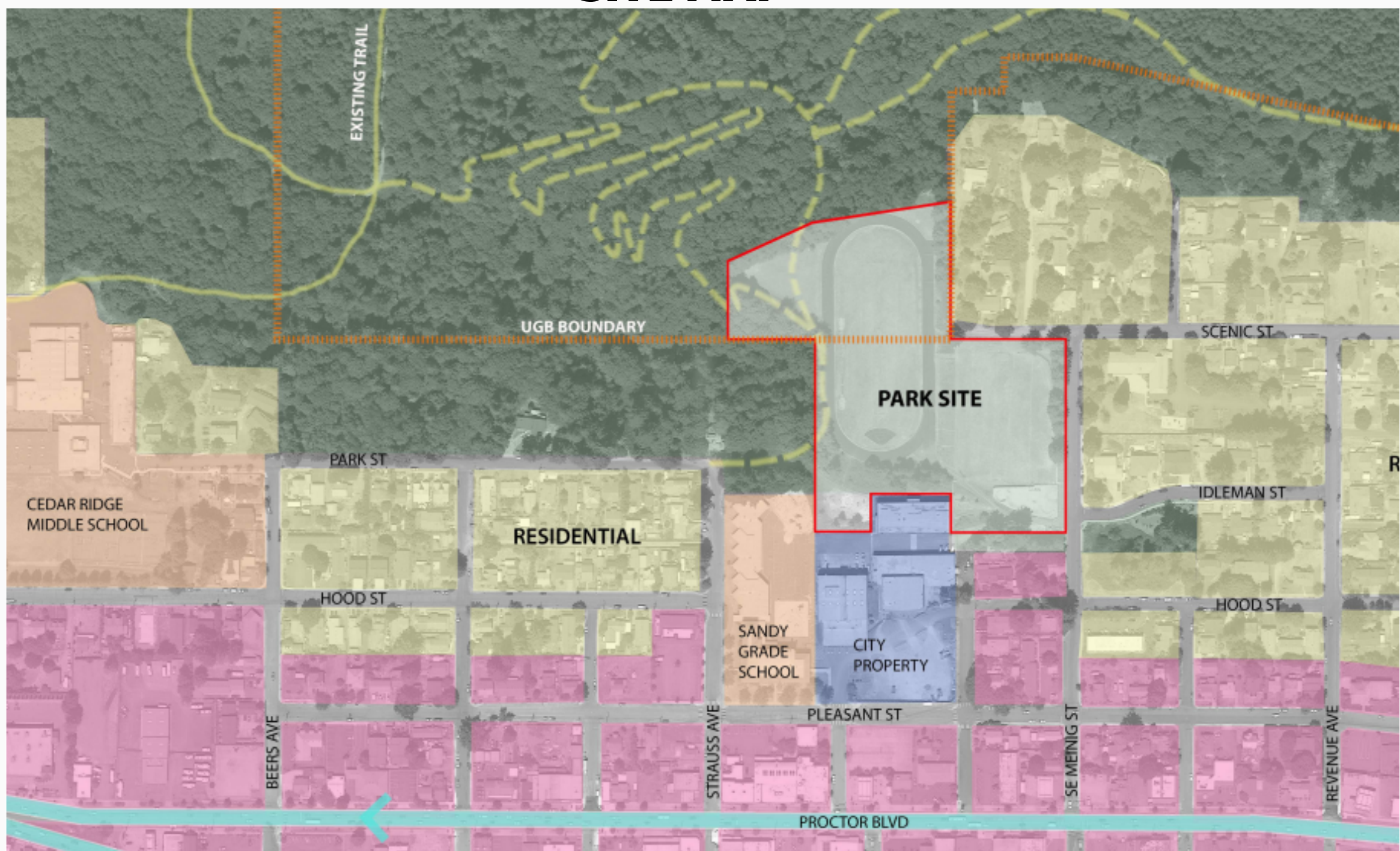
The City of Sandy is getting started on an exciting project to develop a new community park in the heart of our downtown!

The site for the Community Campus Park (the lower field area behind the old Cedar Ridge Middle School buildings) includes approximately 10.5 acres north of Pleasant Street, between SE Meinig Avenue and Strauss Avenue. The current site includes a few amenities such as the Sandy Skate Park and former school fields, but it is mostly undeveloped.

The first step in making this new park a reality is to create the Community Campus Park Development Plan, which will provide a framework to guide its construction. The plan will rely significantly on input and ideas provided by our community.

The Sandy Community Campus Park is envisioned to serve as a focal point and gathering place for all Sandy residents and will include a wide range of amenities, such as an action sports facility to include a pump track/skate park, trails, playground, picnic shelters, natural and open spaces, and restrooms.

SITE MAP

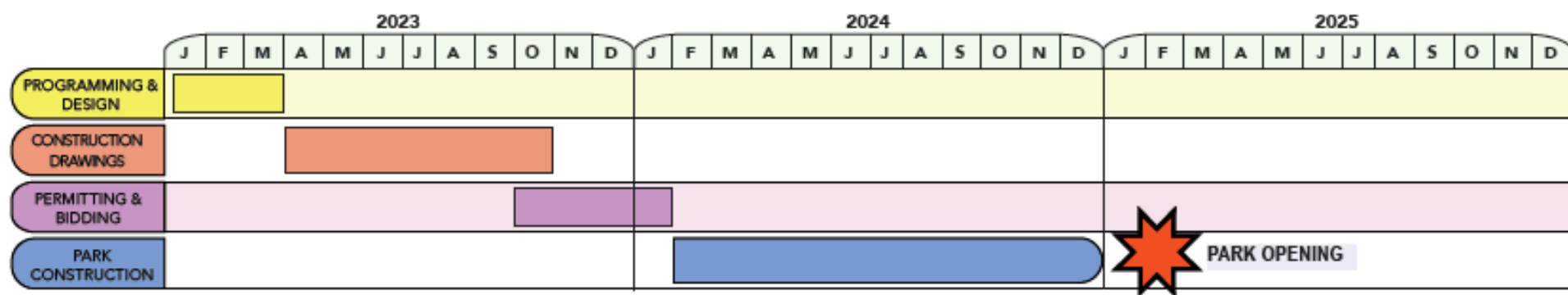


THE PARK DEVELOPMENT PLAN WILL DO THREE THINGS:

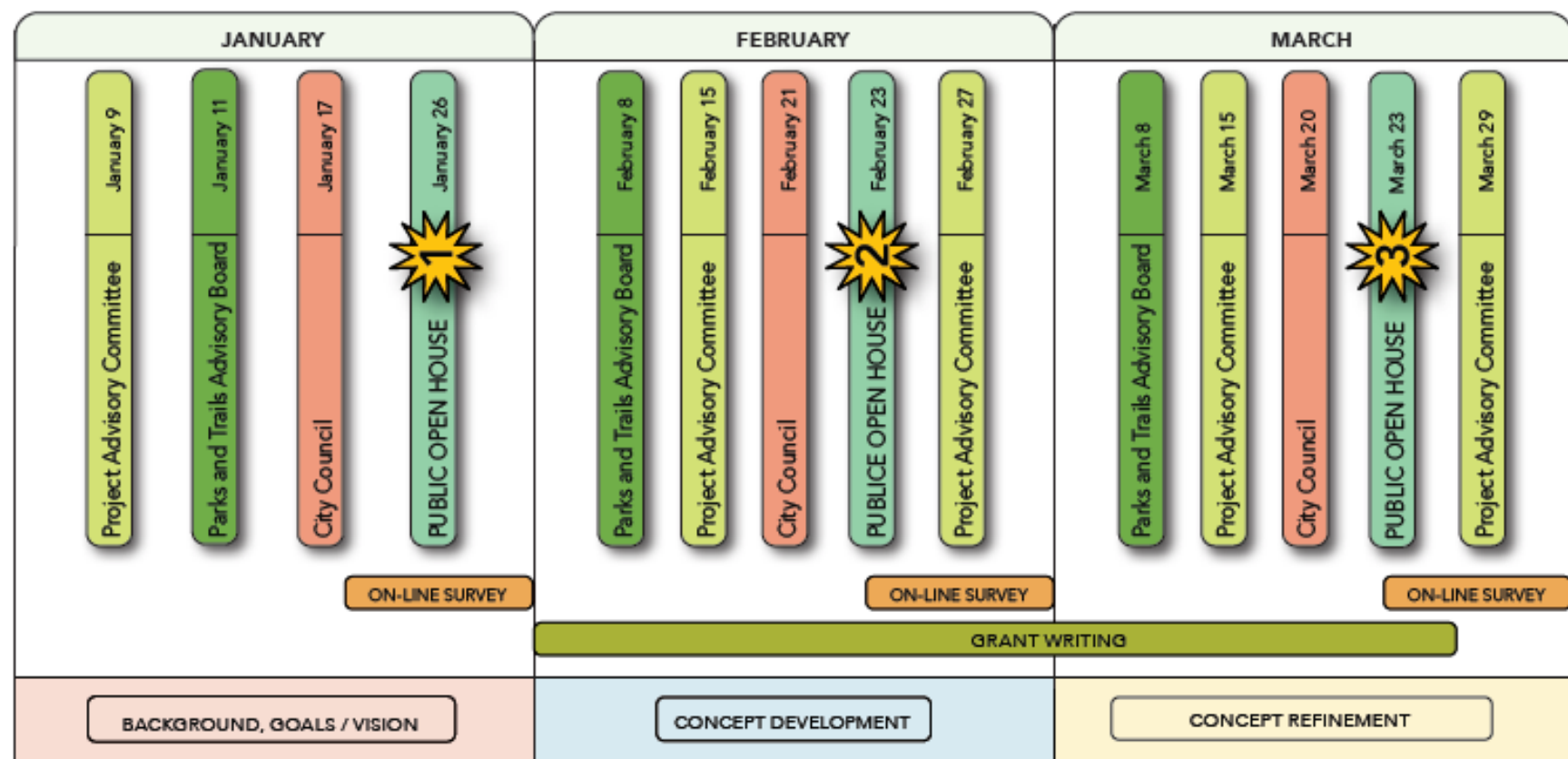
1. HELP RE-ENVISION THE SANDY COMMUNITY CAMPUS PARK PROPERTY
2. DEVELOP CONCEPT PLANS TO PROVIDE DESIGN IDEAS THAT REFLECT SANDY'S UNIQUE HISTORY AND VALUES, HERITAGE, AND COMMUNITY NEEDS
3. ESTABLISH PRELIMINARY COST ESTIMATES THAT WILL INFORM THE DEVELOPMENT OF A NEW COMMUNITY PARK

PROJECT SCHEDULE

OVERALL SCHEDULE



PROGRAMMING AND DESIGN DETAIL SCHEDULE



OPPORTUNITIES FOR ENGAGEMENT:

WE WANT THIS TO BE A TRUE COMMUNITY PARK, AND WE NEED YOUR IDEAS TO HELP MAKE THAT HAPPEN. PLEASE GET INVOLVED AND JOIN US FOR OUR OPEN HOUSES TO LEARN MORE ABOUT THE PROJECT AND PROVIDE FEEDBACK ON WHAT YOUR PRIORITIES ARE FOR THE COMMUNITY CAMPUS PARK, AND COMPLETE THE ONLINE SURVEYS TO LET US KNOW HOW YOU'D LIKE TO USE THE PARK.

OPEN HOUSES:

ALL OPEN HOUSES WILL BE AT THE SANDY COMMUNITY/SENIOR CENTER
(38348 PIONEER BLVD)
5:30PM-7:30PM.

OPEN HOUSE #1- JANUARY 26

Background, Goals, and Vision

OPEN HOUSE #2 - FEBRUARY 23

Concept Development

OPEN HOUSE #3 - MARCH 23

Concept Refinement



ONLINE SURVEYS:

WILL BE ON THE PROJECT WEBSITE ONCE AVAILABLE.

ONLINE SURVEY #1- JANUARY 19- FEBRUARY 2

Background, Goals, & Vision

ONLINE SURVEY #2- FEBRUARY 23- MARCH 9

Concept Development

ONLINE COMMENTS - MARCH 23 - APRIL 6

Concept Refinement



IN ADDITION TO THE OPEN HOUSES AND ONLINE SURVEYS, THERE IS A PROJECT ADVISORY COMMITTEE THAT IS MEETING 1-2 TIMES A MONTH, FEEDBACK WILL BE GATHERED FROM THE PARKS & TRAILS ADVISORY BOARD, AND INTERVIEWS WILL BE CONDUCTED WITH KEY COMMUNITY GROUPS TO ROUND OUT THE PUBLIC ENGAGEMENT ON THIS PROJECT.

More Information:

For more information on this project, Please visit the project website by scanning this QR code:



Have additional comment or questions? Contact the City Project Manager, Rochelle Anderholm-Parsch at randerholmparsch@ci.sandy.or.us