

Public Workshop #1 Feedback

General Comments:

- Community garden should be placed away from house
- Area adjacent to house should be able to host events
- Active park with numerous elements for families and children is preferred
- Parking on-site is preferred
- Park plan must accommodate future neighborhood plans
- Prefer active spaces, not large areas of native landscape and tree groves

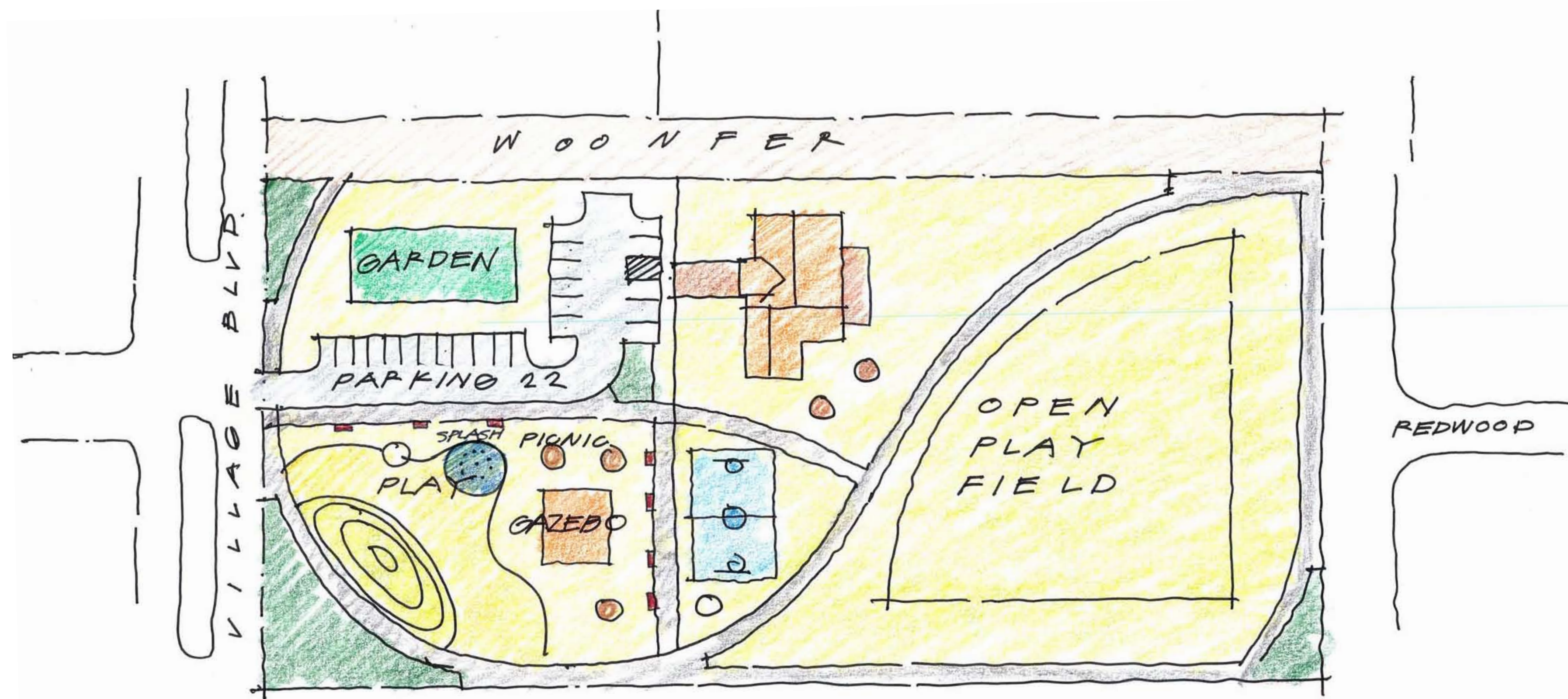
Preferred Program:

- Loop perimeter path
- Playground and view mound
- Picnic areas - group and single
- Gazebo or small shelter
- Community garden
- Court sports
- Dog area
- Flexible open lawn space for non-programmed sports

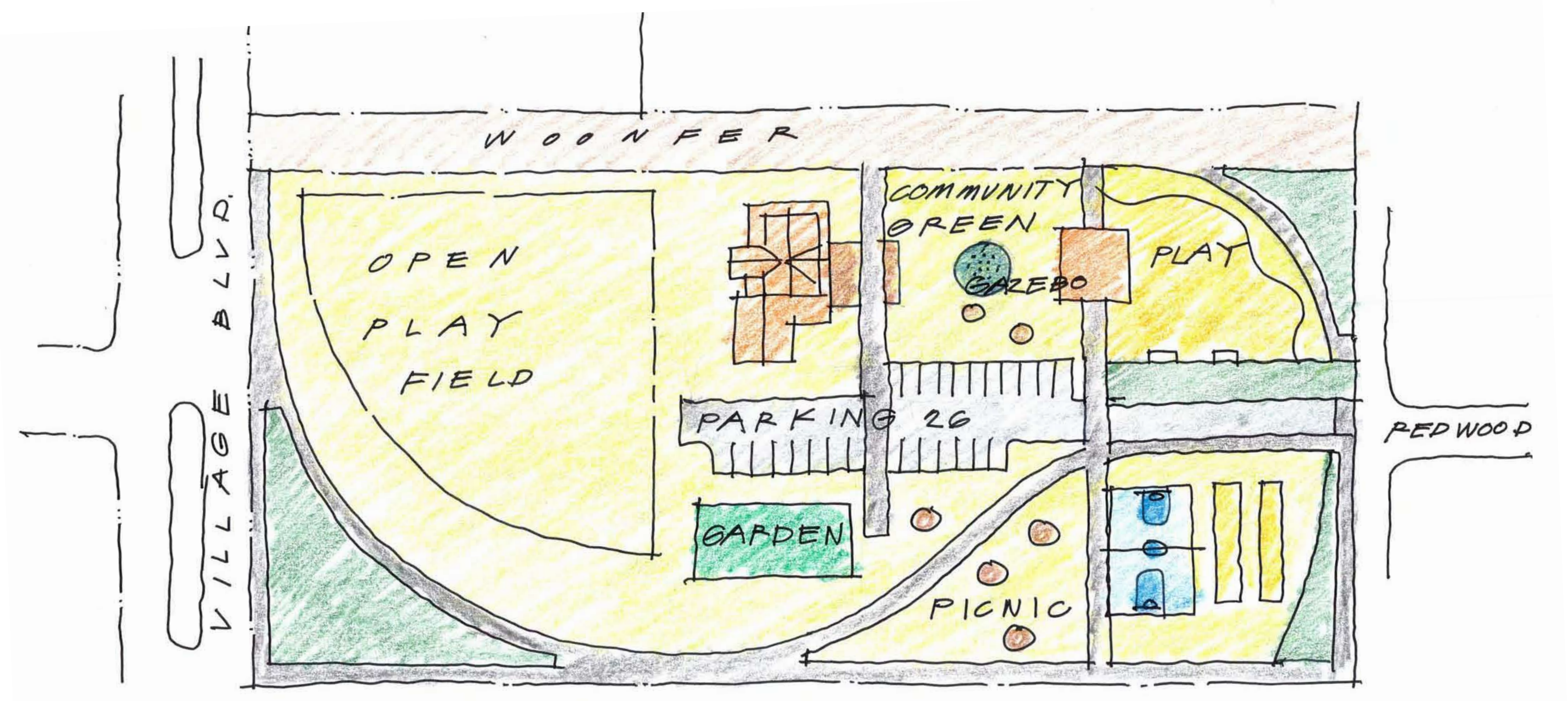
Preferred Plan:

- Redwood Option - 6 votes / preference for layout
- Pine Option - 3 votes / preference for number of activities
- Oak Option - 2 votes
- Preference for a curvilinear plan vs. straight lines

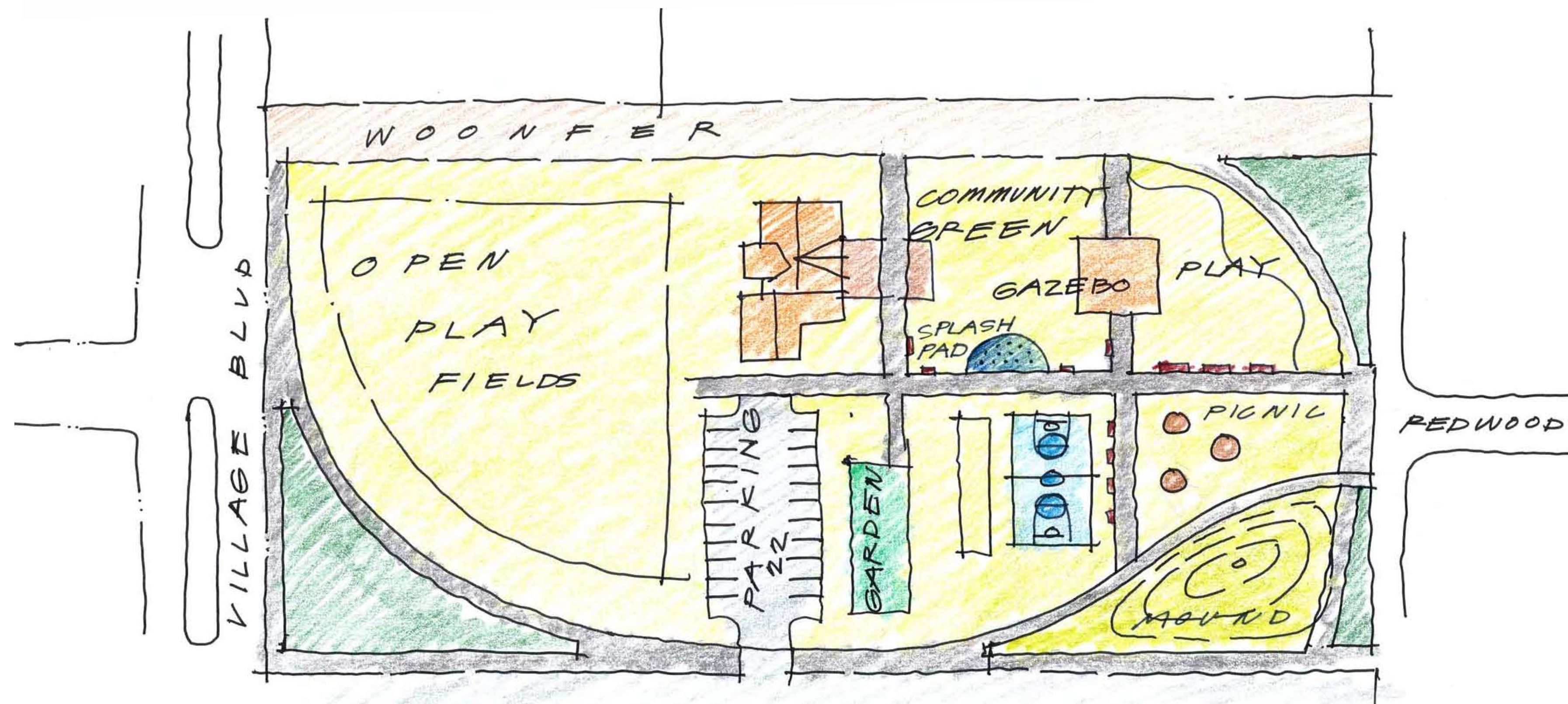
Consensus - combine Redwood layout of with Pine activities



BORNSTEDT PARK
WEST OPTION 2.11.10



BORNSTEDT PARK
EAST OPTION 2.11.10



BORNSTEDT PARK
SOUTH OPTION



BORNSTEDT PARK
SOUTHEAST OPTION

Technical Advisory Committee Feedback

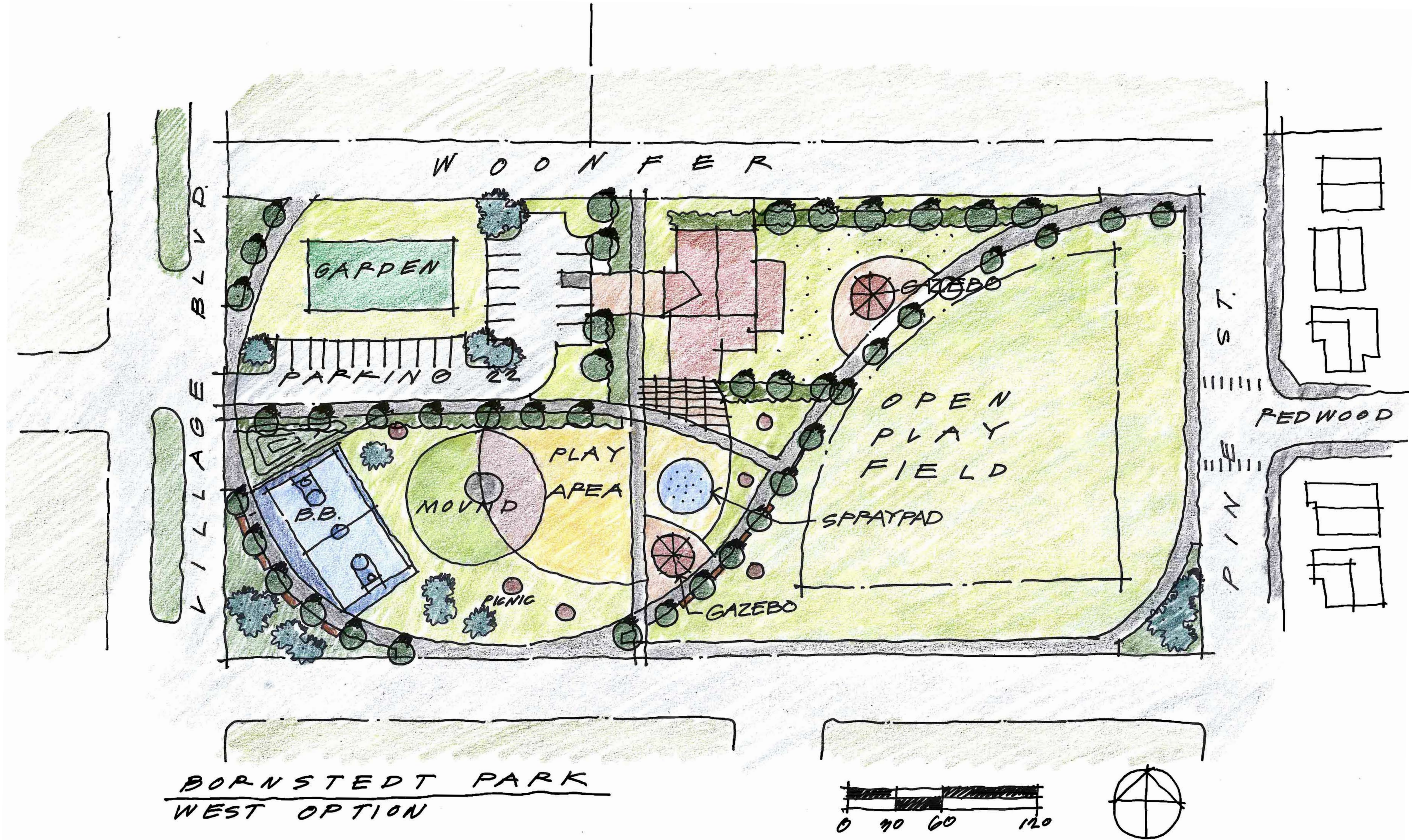
General Comments:

- Program elements in each are good and respond to public preferences
- Loop path may use woonfer (future housing plat element)
- Parking - determine required number of stalls
 - must be open when park is open, street parking is limited
- Adjust adjacencies (such as basketball by community center and community garden by playground) in final option
- Existing neighbors would likely prefer the field on the east side of the park

Plan Comments:

- West - prefer the garden location, view mound at play, location of field
- East - prefer basketball away from community center
- South - like gazebo location, but may need two during events
- Southeast - like flexible parking entry requiring no street improvements

Consensus - West Option is preferred, add second shelter and relocate basketball court away from future community center



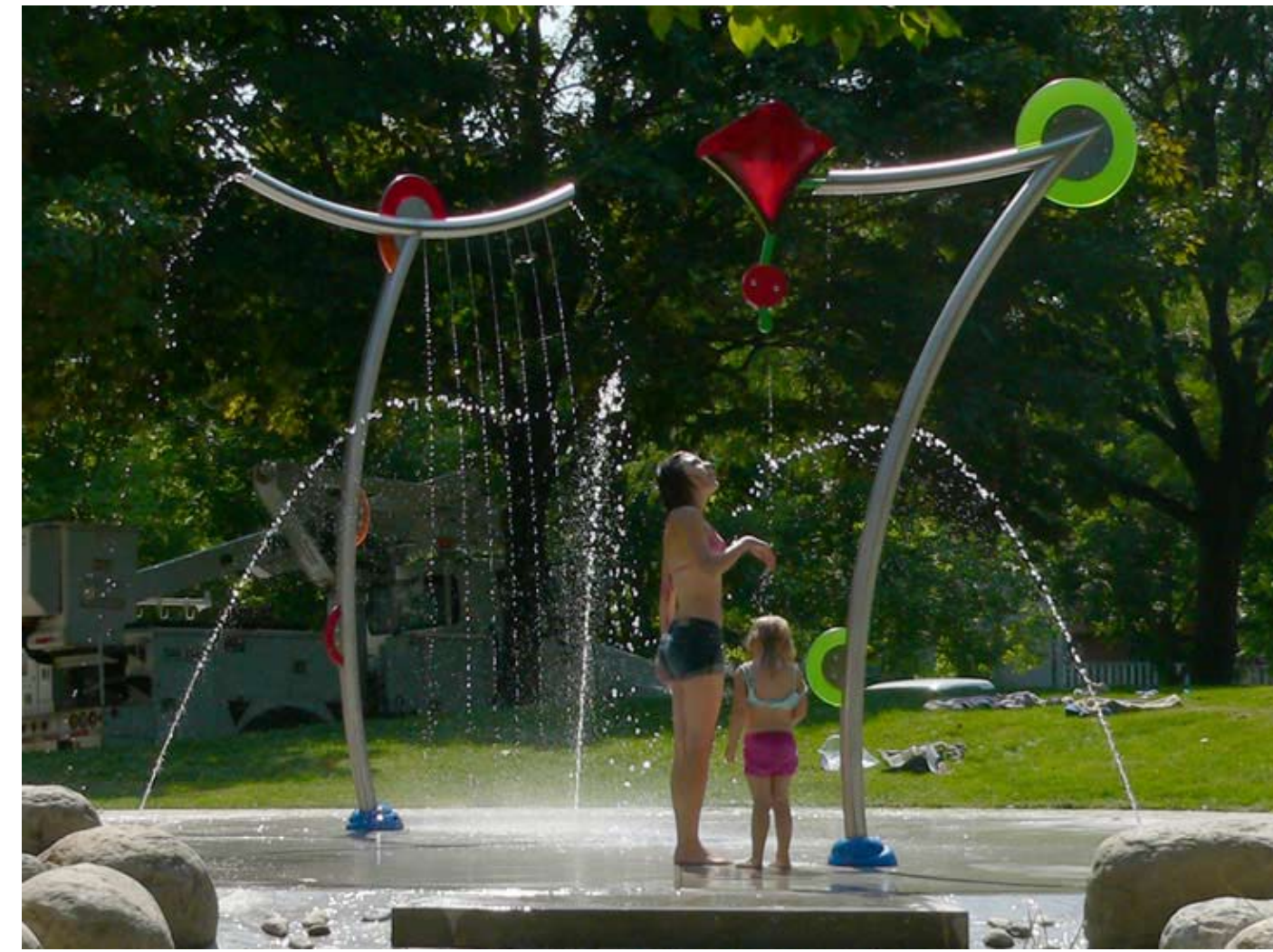
BORNSTEDT PARK
WEST OPTION



Play



Water



Open Field



Paths



Parking



Shelter



Basketball



Community Garden

