



ENVISION SANDY 2050

Community Advisory Committee (CAC) Meeting #7

July 13th, 2023



Agenda

- Welcome and Introductions
- *Envision Sandy2050* Project Overview and Updates
- Review of Comprehensive Plan Process and Schedule
- Block 2 Goals and Policies
- Next Steps



Envision Sandy 2050 Project Overview and Updates

Envision Sandy 2050 and Comprehensive Plan Update Process

Background Reports

Where are we now?

2050 Vision Statement

Where do we want to go?



Goals and Policies

How do we get there?



Sandy Comprehensive Plan

2050 Vision Statement

Background Reports

Goals

Policies

Visioning Process - *Developing a framework*



ENVISION SANDY 2050 VISION STATEMENT



Community and Culture
In 2050, Sandy retains its small-town feel through a celebration of community and place. Downtown Sandy is a dear, walkable, and vibrant place to dine, shop, and gather. The beautification of downtown showcases public art, honors Sandy's history, and celebrates its location as "The Gateway to Mt. Hood." Public amenities and facilities provide places to play, grow, and learn for residents of all ages. Sandy supports events like the Sandy Mountain Festival that bring people together and promote a spirit of inclusivity. Non-profit and volunteer organizations offer meaningful services to the community and provide opportunities for civic engagement.



Governance and Growth Management
In 2050, Sandy is proactive in managing and planning for growth. Sandy is an innovative community that addresses change through thoughtful planning and effective governance. Growth and development are guided by community values, fiscal responsibility, and strategic investments in services and infrastructure. Premier fire, police and emergency response services ensure safety for residents. Regulatory tools and practices are consistently updated to address new issues, and new development contributes to the expansion of public utilities. Leadership and residents engage with one another in decision-making processes so new opportunities benefit the community while preserving Sandy's small-town feel.



Parks, Trails, and Natural Resources
In 2050, Sandy's natural and scenic landscape is an extension of the community. Clean rivers, healthy trees, and wildlife habitats are carefully conserved to promote biodiversity. Forested areas within the City are protected as parks, trails and natural open space. Sandy preserves the unique character and charm of beloved assets like Meinig Memorial Park, the Tickle Creek Trail, and Jonsrud Viewpoint. The City continues to develop recreation programs and a diverse and accessible park and trail system that is clean, safe, and functional, serving the needs of residents.



Natural Hazards and Resiliency
In 2050, Sandy is resilient in the face of natural hazards. As stewards of clean air, water, and land resources for future generations, Sandy guides the design of the built environment to protect, enhance, and be integrated with natural systems. The threat of wildfire is mitigated through emergency preparedness, education, and proactive planning. Sandy collaborates with local agencies, including Fire Districts, Clackamas County, and regional partners to plan for actions that can lessen the impact of natural hazards, ensuring the City and its partners have long-term strategies for protecting the community.



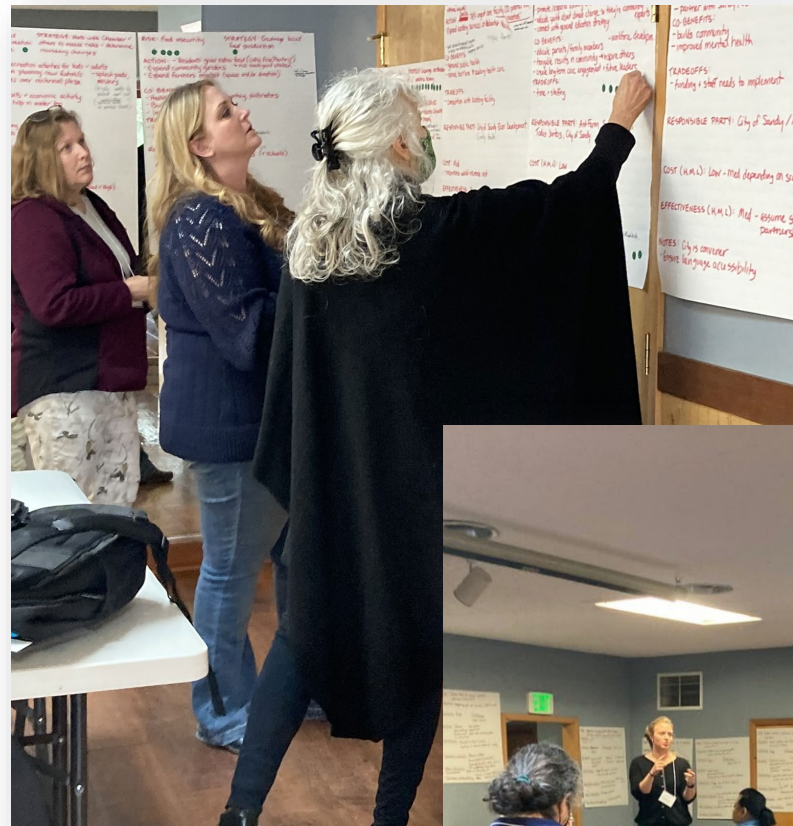
Housing and Economy
In 2050, Sandy is home to desirable neighborhoods and a strong workforce. Thriving commercial and industrial districts provide balanced employment opportunities at all levels. A variety of businesses meet the daily needs of residents and contribute to Sandy's sense of place. A strong tourism industry provides opportunities for businesses and supports the local economy. Sandy's workers have access to a variety of housing choices that allow residents to move in, move up or age in place, ensuring families can live, work, and thrive in Sandy across multiple generations. Balanced housing choices contribute to safe, walkable, family-friendly neighborhoods that connect residents to nearby parks, trails, businesses and key destinations.



Transportation and Infrastructure
In 2050, Sandy boasts modern and reliable public facilities and services that support carefully planned growth. The City invests in infrastructure that provides clean drinking water, treats wastewater while protecting our watersheds, and mitigates the effects of stormwater runoff. The expansion, operation, and maintenance of public services is supported through sustainable and balanced funding sources. SandyNet continues to provide reliable and fast internet service to the City's residents. Sandy's transportation system prioritizes safety, connectivity, and accessibility, with an emphasis on local street connections to reduce reliance on arterial roads such as Highways 26 and 211 for local trips. Safe, efficient, high-quality transit service, as well as a network of sidewalks and bike facilities, provides an alternative to private automobile use, supporting efficient use of roadways and reducing air pollution and energy use.

Natural Hazards Stakeholder Workshops

- Developing priorities and strategies



2022 Winter Spring Summer Fall 2023 Winter Spring Summer Fall Winter

Community Visioning and Goal Setting

- Community engagement and outreach activities
- Comprehensive Plan Vision and Goals

Assessment of Current and Future Conditions

- Data Collection and Analysis
- Economic Opportunities Analysis (EOA)
- Housing Needs Analysis (HNA)

Comprehensive Plan Update

- Policy Formulation and Implementation Strategies
- Comprehensive Plan Document Development

Adoption

- Planning Commission and City Council Hearings

Future Fest

Natural Hazards Stakeholder Workshop #1

Block 2 PI

Block 1 PI

Block 3 PI

Natural Hazards Stakeholder Workshop #2

Community Advisory Committee (CAC) Meetings

City Council and Planning Commission Briefings



Review of Comprehensive Plan Process and Schedule

What does the current Comprehensive Plan look like?

Sandy
Comprehensive Land Use Plan

Adopted October 20, 1997
Ordinance No. 8-97

As Amended By:

Ordinance 2003-09
Ordinance 2005-02
Ordinance 2008-12
Ordinance 2012-01

City of Sandy
39250 Pioneer Blvd.
Sandy OR 97055
(503) 668-5533 Fax (503) 668-8714

TABLE OF CONTENTS

Introduction	1
Goal 1 - Citizen Involvement	3
Goal 2 - Land Use	4
Goal 3 & 4 - Agricultural and Forest Land	11
Goal 5 - Open Spaces, Scenic and Historic Areas, and Natural Resources	12
Goal 6 - Air, Water, and Land Resources Quality	17
Goal 7 - Natural Disasters and Hazards	19
Goal 8 - Parks and Recreation	20
Goal 9 - Economy	23
Goal 10 - Housing	28
Goal 11 - Facilities and Services	29
Goal 12 - Transportation	32
Goal 13 - Energy Conservation	36
Goal 14 - Urbanization	37

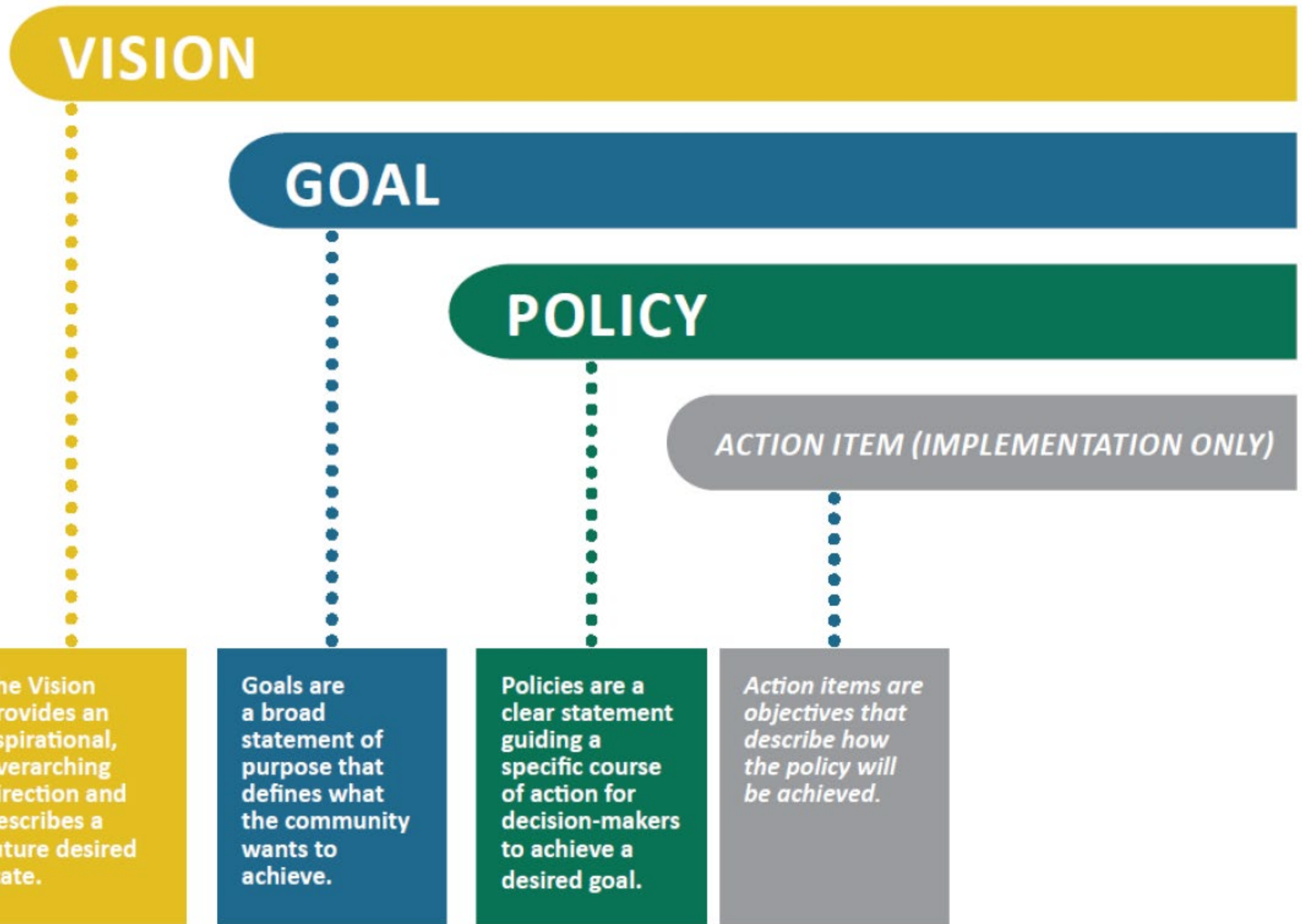
Goal 13 *Energy Conservation*

This goal is to establish policies to conserve energy.



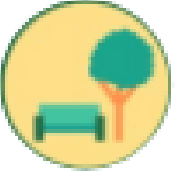



1. Promote infill developments to reduce the need to extend services and streets.
2. Encourage the use of mass transit as a commuter service connection to the metropolitan area.
3. Promote high-density housing near major transportation corridors, village commercial centers, the downtown, and other areas accessible by transit in an effort to reduce vehicle miles traveled.
4. Encourage energy-efficient design.

Hierarchy of Content

Updated Comp Plan



Organization of Content

Block <i>(Document Production)</i>	Vision Theme (Comprehensive Plan Chapter)	Proposed Topic Areas	Applicable Statewide Planning Goals
Block 1 (Jan-Apr)	 Community and Culture	Community Engagement	Goal 1: Citizen Involvement (A)
		Urban Design	Goal 5: Cultural and Historic Resources (A)
		Civic Amenities	
	 Transportation and Infrastructure	Diversity, Equity, Inclusion	
		Transportation	Goal 12: Transportation
		Water, Sewer, Stormwater, Utilities	Goal 11: Public Facilities and Services
Block 2 (May-Aug)	 Parks, Trails and Natural Resources	Energy	Goal 13: Energy Conservation (B)
		Parks and Recreation	Goal 8: Recreational Needs
		Natural Resources	Goal 5: Natural Resources and Open Space (B)
	 Natural Hazards and Resiliency	Biodiversity	
		Natural Hazards	Goal 7: Natural Hazards
		Resiliency	Goal 6: Air, Water and Land Resource Quality
		Disaster Preparedness	
		Energy	Goal 13: Energy Conservation (A)
Block 3 (Sept-Dec)	 Housing and Economy	Economy	Goal 9 Economic Development
		Housing	Goal 10: Housing
	 Governance and Growth Management	Urbanization	Goal 14: Urbanization
		Governance	Goal 2: Land Use Planning
		Civic involvement	Goal 1: Citizen Involvement (B)
		Public Safety	

**(A) and (B) denotes the applicability of a statewide planning goal across multiple comprehensive plan chapters/topic areas*

Existing Goals and Policies from Supporting Plans

2022 Transportation System Plan (TSP)

2020 Transit Master Plan

2023 Economic Development Strategy

2023 Economic Opportunities Analysis

2023 Housing Needs Analysis

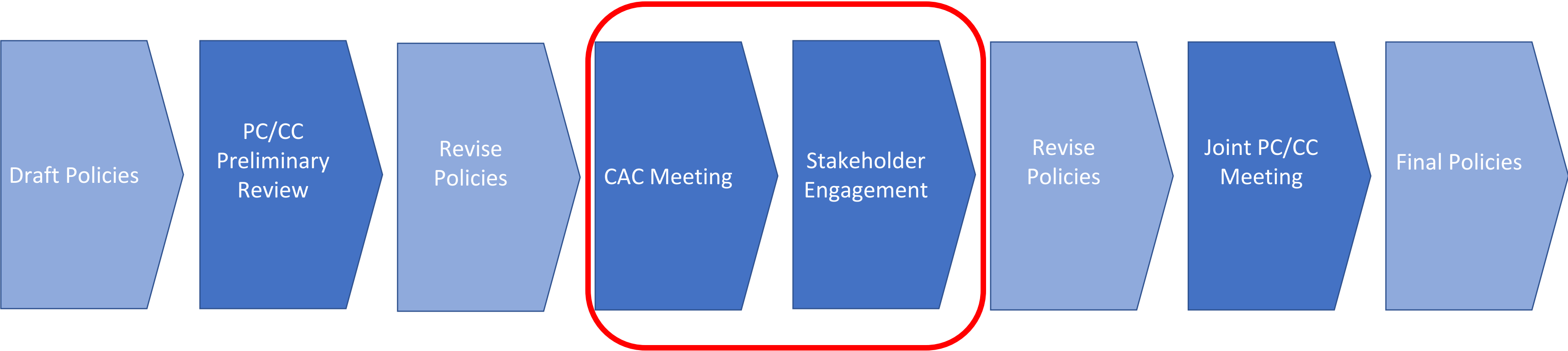
2021 Parks and Trails Master Plan

2019 Clackamas County Natural Hazards Mitigation Plan *(2024 update forthcoming)*

Other inputs

- **Community outreach and engagement**
- **Natural Hazards Stakeholder Workshop series**
- **City staff input**
- **Planning Commission/City Council**
- **Interviews and outreach to community partners, stakeholders, local and regional agencies, and service providers**

“Block” Process of updating the Comprehensive Plan



Block 2 Goals and Policies: Natural Hazards and Resiliency, and Parks, Trails and Natural Resources

Theme 1: Natural Hazards and Resiliency

In 2050, Sandy is resilient in the face of natural hazards. As stewards of clean air, water, and land resources for future generations, Sandy guides the design of the built environment to protect, enhance, and be integrated with natural systems. The threat of natural hazards like wildfire and earthquakes is mitigated through emergency preparedness, education, and proactive planning. Sandy collaborates with local agencies, including Fire Districts, Clackamas County, and regional partners to plan for actions that can lessen the impact of natural hazards, ensuring the City and its partners have long-term strategies for protecting the community.

Natural Hazards and Resiliency

Community Preparation

Goal 1: Prepare Sandy residents and business owners for wildfire and volcano risk.

Goal 2: Prepare Sandy residents and business owners for earthquakes, floods, landslides, and other extreme weather events.

Community Resilience

Goal 1: Protect public and physical assets of the community from natural hazards.

Goal 2: Partner and coordinate regionally to reduce risk from natural hazards.

Goal 3: Build community resilience to more frequent natural disasters and other chronic stressors.

Community Preparation

Goal 1: Prepare Sandy residents and business owners for wildfire and volcano risk.

- Policy 1.1 Work with Fire District 72 to inform Sandy residents so they are ready to evacuate using the Ready, Set, Go readiness campaign.
- Policy 1.2 Work with Fire District 72 to educate the public and business owners about how to reduce wildfire risk to their homes and businesses, providing direct assistance to low-income residents.
- Policy 1.3 Adopt regulatory requirements and building codes that reduce fire risk for new construction.
- Policy 1.4 Work with Clackamas County and the State of Oregon to enforce OSHA rules regarding wildfire smoke and provide equitable access to education and protective gear for local businesses.
- Policy 1.5 Help residents address wildfire smoke through education, assistance with indoor filtration, and the identification of public facilities that can serve as smoke shelters during smoke events.
- Policy 1.6 Work with Clackamas County Emergency Management to further develop and educate the public regarding evacuation routes and procedures.
- Policy 1.7 Develop and implement a plan for extended power outages caused by planned shutdowns to address wildfire risk for all city managed facilities and infrastructure.

Community Preparation

Goal 2: Prepare Sandy residents and business owners for earthquakes, floods, landslides, and other extreme weather events.

Policy 2.1 Implement public education and training programs so that residents are capable of sheltering in place for at least 14 days in an emergency with little to no outside assistance.

Policy 2.2 Develop and implement a plan for extended power outages caused by extreme weather events for all city managed facilities and infrastructure.

Policy 2.3 Work with Clackamas County and community organizations to educate residents, employers, and employees about how to safeguard health during extreme heat events.

Policy 2.4 Work with Clackamas County and the State of Oregon to enforce OSHA rules regarding extreme heat and provide equitable access to education for local businesses.

Policy 2.5 Help residents address extreme heat through education and the identification of public facilities that can serve as cooling shelters during heat events.

Policy 2.6 Explore participation in the National Flood Insurance Program's Community Rating System.

Community Resilience

Goal 3: Protect public and physical assets of the community from natural hazards.

- Policy 3.1 Assess public buildings and city managed facilities, utilities, open spaces, and park lands for wildfire, drought, flooding, earthquake, severe winter storms, and landslide risk and implement risk reduction projects beginning with structures that are needed for emergency sheltering.
- Policy 3.2 Promote and protect the use of naturally flood prone open space or wetlands as flood storage areas.
- Policy 3.3 Adopt land use policies that prevent or significantly reduce development in high - risk areas and educate residents and businesses about the risk of property investment in these areas.
- Policy 3.4 Promote innovative site and building designs which reduce the adverse impacts of development on steep slopes and other natural hazard areas when it is allowed.
- Policy 3.5 Designate and map areas of steep slopes (25% or greater) and other known hazard areas in the 2017 urban growth boundary expansion area.
- Policy 3.6 Monitor and mitigate blowdown that blocks natural flow patterns in creeks or creates fuel loading hazard for adjacent areas.

Community Resilience

Goal 4: Partner and coordinate regionally to reduce risk from natural hazards.

Policy 4.1 Actively participate in Natural Hazard Mitigation Plan updates and plan implementation processes to ensure that the changing resilience needs of Sandy residents are reflected in revised plans.

Policy 4.2 Engage with other communities across the region to implement the Clackamas Community Wildfire Protection Plan.

Policy 4.3 Coordinate with Clackamas County Emergency Management to ensure that emergency management plans are well understood, and the City is clear about its role in implementing those plans regarding known hazards.

Policy 4.4 Engage with Pacific Power and Clackamas County Emergency Management to ensure the City understands the utility's approach for planned power shutoffs to reduce wildfire risk, the County's plan to address emergencies that will arise from those shutoffs, and the City's role in these situations.

Community Resilience

Goal 5: Build community resilience to more frequent natural disasters and other chronic stressors.

- Policy 5.1 Implement water conservation measures at city facilities and encourage and support water conservation efforts among residents and local businesses to reduce the strain of more frequent and severe droughts.
- Policy 5.2 Encourage and support local food production to address increasing vulnerability to climate change -driven disruptions in other areas, strengthen the local economy, and promote a sense of community.
- Policy 5.3 Work with the Chamber of Commerce and other local organizations to assess risks and determine necessary changes to protect local festivals and celebrations from climate change impacts.
- Policy 5.4 Work with the Chamber of Commerce to support local businesses in developing natural disaster resilience plans and ensuring that they are adequately insured in the event of an emergency.
- Policy 5.5 Partner with community organizations to attract more health care providers and services to Sandy to prevent the community's healthcare system from being overwhelmed by increasingly frequent and severe natural disasters.
- Policy 5.6 Work with the State of Oregon, Clackamas County, and community partners to improve access to mental health care services, and help residents understand how natural disaster risk is changing and what they can do to protect themselves.
- Policy 5.7 Partner with community organizations to provide more opportunities for youth to engage in and help the community as a means of reducing anxiety for the future.

Group Discussion and Reflections

Is this on the right track?

Theme 2: Parks, Trails, and Natural Resources

In 2050, Sandy's natural and scenic landscape is an extension of the community. Clean rivers, healthy trees, and wildlife habitats are carefully conserved to promote biodiversity. Forested areas within the City are protected as parks, trails and natural open space. Sandy preserves the unique character and charm of beloved assets like Meinig Memorial Park, Sandy River Park, the Tickle Creek Trail, and Jonsrud Viewpoint. The City continues to develop recreation programs and a diverse and accessible park and trail system that is clean, safe, and functional, serving the needs of residents.

Parks, Trails and Natural Resources

Parks and Trails Development

Goal 1: Develop parks, amenities, and recreation opportunities that are equitably distributed across the city.

Goal 2: Create a looped network of trails that connects parks and neighborhoods and provides opportunities for alternative transportation and recreation throughout the city.

Goal 3: Facilitate funding for land acquisition, recreation development, operations, and maintenance.

Natural Resources

Goal 1: Protect forest, river, and wetland ecosystems and the native species they support.

Goal 2: Protect and sustain Sandy's urban forest.

Goal 3: Protect and conserve open space

Goal 4: Ensure ecologically sound development

Parks and Trails Development

Goal 1: Develop parks, amenities, and recreation opportunities that are equitably distributed across the city.

- Policy 1.1 Fill service area gaps so that all residential areas are served by either a neighborhood or mini park based on the Parks and Trails Master Plan's (PTMP) levels of service.
- Policy 1.2 Develop a new community park with sports fields.
- Policy 1.3 Improve geographic distribution of key amenities such as dog parks, community gardens, and splash pads.
- Policy 1.4 Improve existing undeveloped park land such as Champion Way, Deer Point, Ponder Lane, and Sandy Community Campus.
- Policy 1.5 Renovate existing parks to update aging equipment, such as playgrounds, sport courts, and paths such as Tupper Park, Sandy Bluff, and Meinig Park.
- Policy 1.6 Prioritize the development of parks that include unique amenities not currently offered in the park system such as a pump track, pickleball courts, a disc golf course, sensory gardens, nature play, sports field(s), and other features.
- Policy 1.7 Develop a new universal access playground that is inclusive and provides for a range of mobility types and user ages, including children with special needs.
- Policy 1.8 Prioritize the development of neighborhood and community park types over mini parks when land is available and minimize acquisition and development of mini parks to only highly constrained areas and small service area gaps without options for larger parcels.
- Policy 1.9 Incorporate natural areas, wildlife habitat, and native pollinator gardens into all park classifications.

Parks and Trails Development

Goal 2. Create a looped network of trails that connects parks and neighborhoods and provides opportunities for alternative transportation and recreation throughout the city.

- Policy 2.1 Improve trail connections and pedestrian transportation outlined in the Parks and Trails Master Plan (PTMP) to connect neighborhoods with key destinations including schools, other parks and commercial areas.
- Policy 2.2 Provide safe pedestrian crossings for Highways 26 and 211, and Bluff Road through signalization and over - or - under - passes.
- Policy 2.3 Renovate existing paths and trails throughout the city to provide accessible routes to parks and amenities in accordance with the Americans with Disabilities Act Standards for Accessible Design.
- Policy 2.4 Negotiate a public access easement with the Oregon Trail School District to allow unrestricted access/use of trails to the south of the high school.

Parks and Trails

Goal 3. Facilitate funding for land acquisition, recreation development, operations, and maintenance.

- Policy 3.1 Regularly update the System Development Charge Methodology and the fee in lieu calculations to optimize funding from these sources.
- Policy 3.2 Ensure methods for acquisition of Community Park land, such as fee -in-lieu and system development charges (SDCs) are regularly updated to reflect current land and development costs.
- Policy 3.3 Investigate the potential to implement a General Obligation Bond to help fund park development and major renovation projects identified in the Capital Improvement Plan (CIP).
- Policy 3.4 Investigate the potential to implement a Parks Utility Fee to help fund park maintenance and operations.
- Policy 3.5 Investigate applying stormwater user fees to supplement parks maintenance funding.
- Policy 3.6 Develop an asset management program that includes a detailed inventory and assessment of existing city -wide parks infrastructure and amenities to help plan for and prioritize life -cycle renovation and replacement for these systems.
- Policy 3.7 Evaluate the cost efficiency and effectiveness of balancing contract services with increased staffing levels, including additional volunteer coordinator positions, to match system growth.
- Policy 3.8 Support non -profits and volunteers to acquire land, obtain donations, secure grants and engage local groups and residents to help build and maintain parks and trails.

Natural Resources

Goal 1: Protect forest, river, and wetland ecosystems and the native species they support.

- Policy 1.1 Partner with the Oregon Department of Fish & Wildlife, US Forest Service, and other large landowners to improve forest and watershed health ahead of impacts due to extreme heat, reduced snowpack, wildfire, and drought.
- Policy 1.2 Safeguard natural waterways by utilizing water conservation measures and programs that limit water demand from the City of Sandy, its residents, and local business owners, particularly during late summer when natural flows are the lowest of the year.
- Policy 1.3 Partner with the Oregon Department of Fish & Wildlife, the Soil and Water Conservation District, and other local organizations to develop projects to protect native species at risk due to increased pests and species migration driven by changing climate conditions.
- Policy 1.4 Favor the use of the natural drainage system and other non-structural methods to treat, convey, and dispose of rainwater runoff.
- Policy 1.5 Update mapping of approximate areas of known stream corridors, wetlands, and associated buffers.
- Policy 1.6 Where feasible, preserve natural vegetation resource sites through public acquisition, conservation easements or other available methods to permanently limit development.

Natural Resources

Goal 2: Protect and sustain Sandy's urban forest.

- Policy 2.1 Update the city tree code to integrate consideration of changing climate conditions.
- Policy 2.2 Adopt procedures for city properties and rights of way that promote the use of drought tolerant, native trees and plants and teach residents how to protect tree health on their property.
- Policy 2.3 Educate residents regarding invasive species and how to address them on private property.
- Policy 2.4 Consider incentives to encourage the preservation of significant trees.

Natural Resources

Goal 3: Protect and conserve open space.

- Policy 3.1 Identify and inventory open space corridors within the Sandy urban growth area. Open space shall include lands useful for fish and wildlife habitat, trails, public access to natural resource lands and water, and protection of environmentally sensitive areas.
- Policy 3.2 Employ development regulations to preserve and protect open space and environmentally sensitive lands, integrate the natural environment of Sandy into project designs, minimize the creation of impervious surface, and discourage the unnecessary clearing of trees and other natural vegetation.
- Policy 3.3 Wherever possible, establish native growth protection areas along Highway 26 at both the east and west entries to the city. These areas are intended to provide a pleasant entry to the city, screen industrial uses from the highway, and provide a buffer between the highway and other land uses.
- Policy 3.4 Where appropriate, connect public open space or private protected open space to other open space corridors established by other agencies and by private development.
- Policy 3.5 Work with property owners and developers to preserve open space along Tickle Creek as part of the Tickle Creek Greenway.
- Policy 3.6 Where feasible, restore and maintain the system of parks and open space in the city to serve the habitat and migratory needs of fish and wildlife in the Sandy River and Clackamas River basins and tributary areas.
- Policy 3.7 Develop forest vegetation management plans for City-owned open space along Sandy River and Tickle Creek to address noxious weeds, mitigate blowdown, and plant drought-tolerant trees and vegetation.

Natural Resources

Goal 4: Ensure ecologically sound development.

Policy 4.1 Maintain environmental quality by guiding future development and land use activities such that allowed activities will not significantly deteriorate the existing high quality of air, water, and land resources.

Policy 4.2 Notify applicable state and federal natural resource protection agencies of development proposals potentially impacting important natural features.

Policy 4.3 Identify and inventory significant natural features within a planning area through the development process and preserve or mitigate their losses by placing conditions upon development of such lands, engaging private non-profit efforts, and city, state, and federal government programs to achieve this objective. -

Policy 4.4 Promote innovative site and building designs which reduce the adverse impacts of development on stream corridors by encouraging projects that protect, maintain, enhance, and restore the natural functions and values of stream corridors.

Policy 4.5 Require development and construction projects to minimize disturbance of and adverse impacts to native tree stands and other areas of significant vegetation and promote innovative site and building designs to meet these objectives.

Policy 4.6 Encourage and, if necessary, require appropriate reforestation efforts in open space areas to help mitigate the adverse impacts of development.

Group Discussion and Reflections

Is this on the right track?

Next Steps

- Revise Draft Goals and Policies
- Online Survey + Community Events
- Joint Planning Commission/City Council Worksession: *Monday, August 7th*
- Next CAC Meeting: *Wednesday, November 8th*
 - *Last one! We'll be talking about housing, economy, and growth management.*

Any last questions?

Thank You!