

City of Sandy

Agenda

City Council Meeting

Meeting Location: City Hall- Council Chambers, 39250
Pioneer Blvd., Sandy, Oregon 97055

Meeting Date: Monday, September 16, 2019

Meeting Time: 6:00 PM



Page

1. **WORK SESSION 6PM**

2. **ROLL CALL**

3. **WORK SESSION ITEMS**
 - 3.1. Agenda Review
 - 3.2. Wastewater Treatment Plant Operations Update 3 - 27
Wastewater Treatment Plant Operations Update

4. **ADJOURN WORK SESSION**

5. **REGULAR COUNCIL MEETING 7PM**

6. **PLEDGE OF ALLEGIANCE**

7. **ROLL CALL**

8. **CHANGES TO THE AGENDA**

9. **PUBLIC COMMENT**

10. **PRESENTATION**
 - 10.1. 2020 Census Presentation 28 - 50

11. CONSENT AGENDA

- 11.1. Clackamas County IGA with SandyNet 51

Staff respectfully recommends City Council approval for the City Manager to enter into the IGA with Clackamas County.

Clackamas County IGA with SandyNet

12. NEW BUSINESS

- 12.1. Public Hearing - Wastewater Facilities Plan 52 - 53

After the presentation open the hearing and call for testimony or comments from the public.

Public Hearing - Wastewater Facilities Plan - Pdf

- 12.2. Proposed Water and Wastewater Rate Increases 54 - 59

Staff recommends the Council provide input and direction on the proposed rate increases for the wastewater and water utilities. The rate adjustment resolution will be brought back to the City Council for adoption on October 7. The rates would become effective with the November - December billing cycle with customers receiving utility bills with the new rates during the 3rd week of December.

Proposed Wastewater and Water Rate Increases

13. REPORT FROM THE CITY MANAGER

14. COMMITTEE /COUNCIL REPORTS

15. STAFF UPDATES

- 15.1. Monthly Reports

16. ADJOURN

**SANDY WATER AND
WASTEWATER
TREATMENT
FACILITIES
O & M STATUS**

Sandy Council

Sept 16, 2019





Contents

1. Introduction
2. Initial Operations Plan (IOP)
3. IOP Objectives
4. Facility Condition
 1. WWTP Condition
 2. WWTP Condition Summary
 3. WTP Condition
5. Summary
6. Discussion

INTRODUCTION

- Veolia began Operation and Maintenance responsibilities March 1, 2019
- Veolia-Sandy Team
 - Tom Romesberg_Project (Facilities) Manager
 - Mike Greene_General Manager Northwest Water
 - Melissa Sandvold_Vice President Northwest
 - Local Area Support
 - Administration
 - Finance
 - Health & Safety
 - Information Systems
 - Technical

INITIAL OPERATIONS PLAN (IOP)

- Veolia submitted a three month operations plan to the Oregon DEQ and City of Sandy prior to commencement of contract
- Plan set out milestones and objectives, based on the knowledge of the facility at that time (prior to March 1)

IOP OBJECTIVES

- Establish The Following:
 - Local Area Network for WWT and WT Systems Operations - Complete
 - Condition assessment of the facilities and related assets- Initial Phase Complete
 - Maintenance Management System (MMS)
 - Equipment numbering-Complete
 - Establish database, for all equipment/assets_Complete
 - Review all manufacturer's equipment manuals and determine routine maintenance tasks_Complete for Critical Assets

IOP OBJECTIVES

- Establish:
 - Process Control Management Plan
 - Describe unit processes
 - Define input and output variables
 - Tracking mechanisms for variables
 - Locate and verify all available data
 - Set up database and trend reports
 - PCMP is established; Need More Data

IOP OBJECTIVES

- Perform a condition assessment on critical assets - Complete
- Evaluate effectiveness of the secondary process (aeration basins and selectors)- Not Finished; developing database & addressing instrumentation needs
- Dewater, inspect and clean both aeration basins - (there is no record of this ever having been done before)
 - Underway
 - Unforeseen Issues

FACILITY CONDITION

- On March 1 there were significant deficiencies in both water and wastewater facilities.
- Wastewater
 - Significant components related to the plant control and automations systems had either limited functionality or were completely inoperable
 - Obsolete and/or unsupported components
 - Many elements of the electrical and mechanical systems had failed
 - Some had been disabled
 - Some failed systems were bypassed
 - Facility condition indicated significant deferred maintenance

WWTP Condition – Belt Filter Press



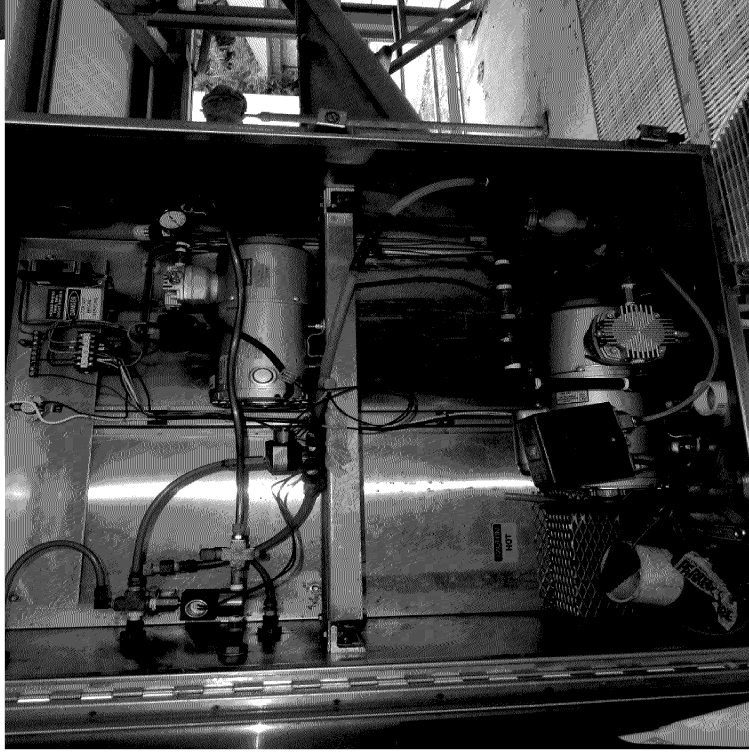
- Belt press processes residuals
- Critical to maintain solids inventory and secondary process
- Main belt misaligned, tripped out and close to failure, with no spares
- New belts purchased; one installed; second as critical spare
- New bearings and seals installed



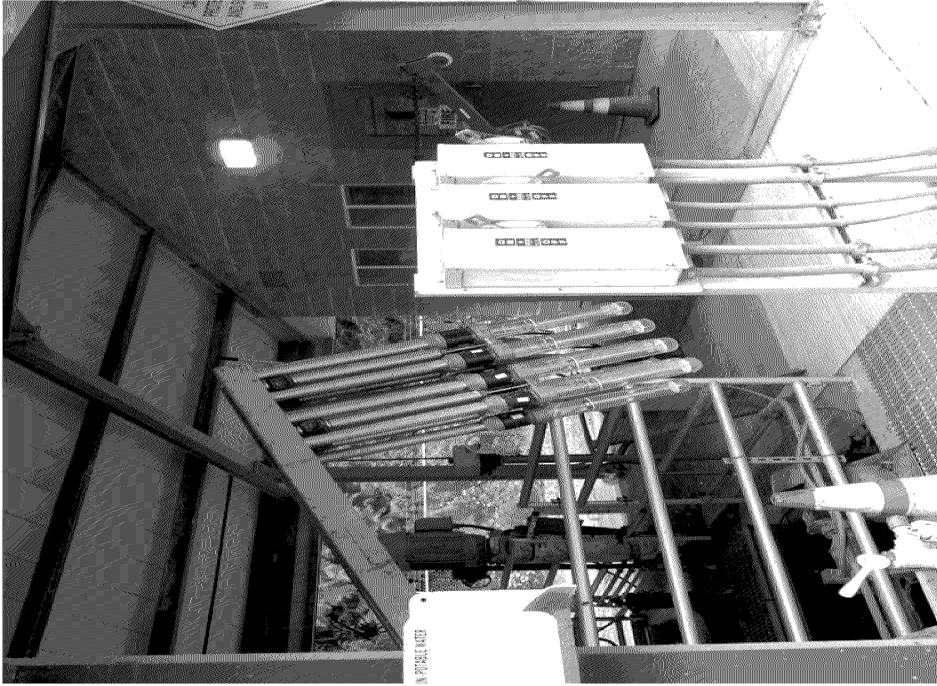


WWTP Condition – Grit Removal (PistaGrit)

Vacuum Prime System Before Vacuum Prime System After

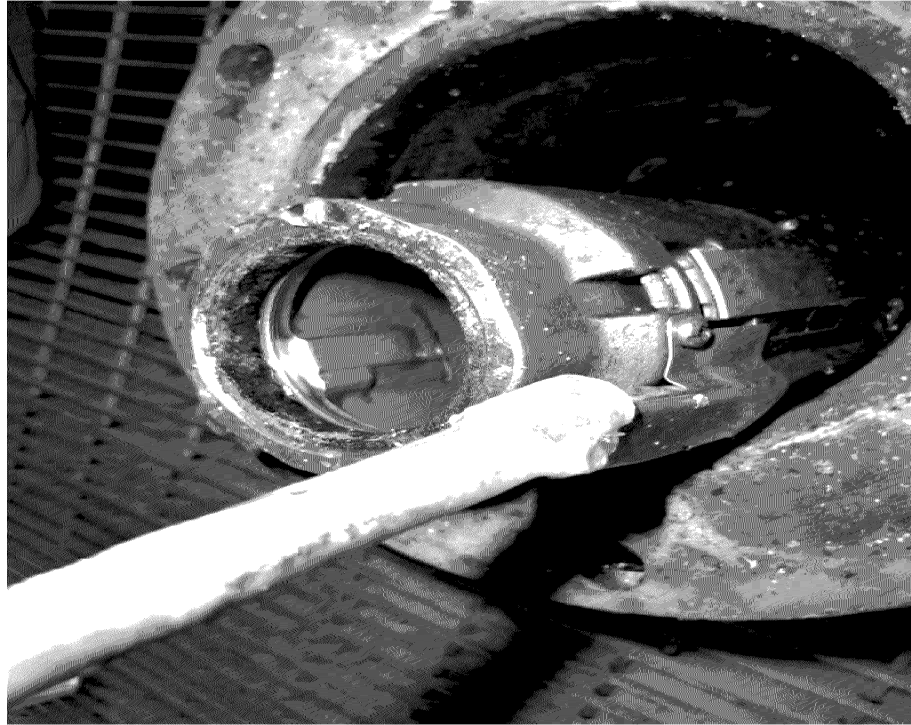


WWTP Condition – UV DISINFECTION



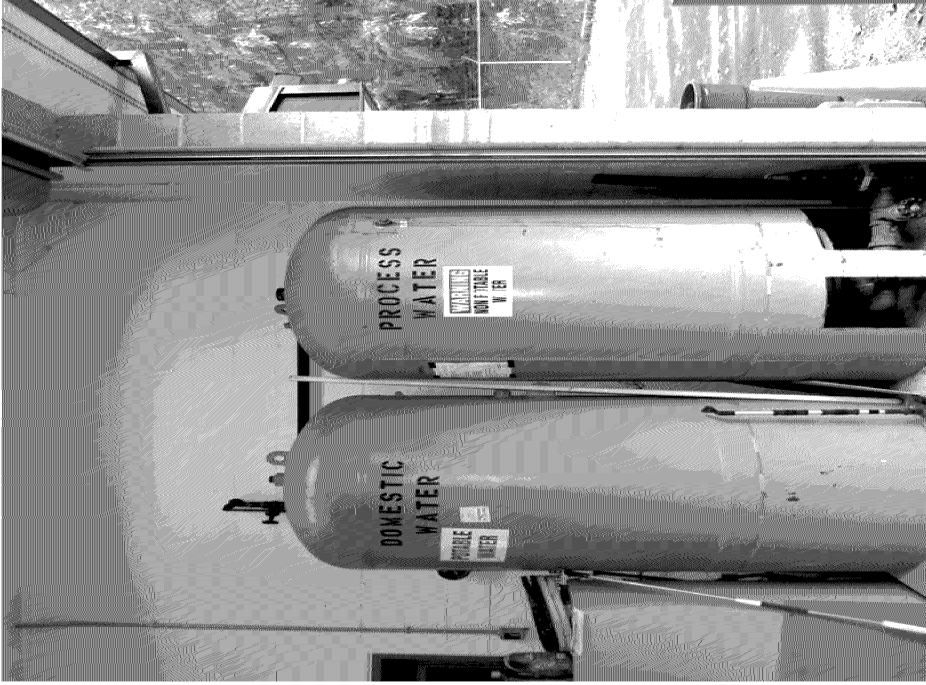
- Only one of two UV banks operable, March 1
- Incomplete disinfection process during plant solids wash out due to heavy rain;
- Unable to use second bank in series for more effective disinfection
- UV system underwent significant repairs this summer
- Both banks are currently operable and ready for winter inflow & infiltration induced flows

WWTP Condition – Recycle Water Pump



- Critical to operation of Belt Filter Press – Solids Processing
- Discharge connection sheared from discharge pipe
- Unable to maintain system pressure, affecting other processes
- Both pumps replaced; system integrity currently OK

WWTP Condition _ Failed Hydropneumatic Tanks



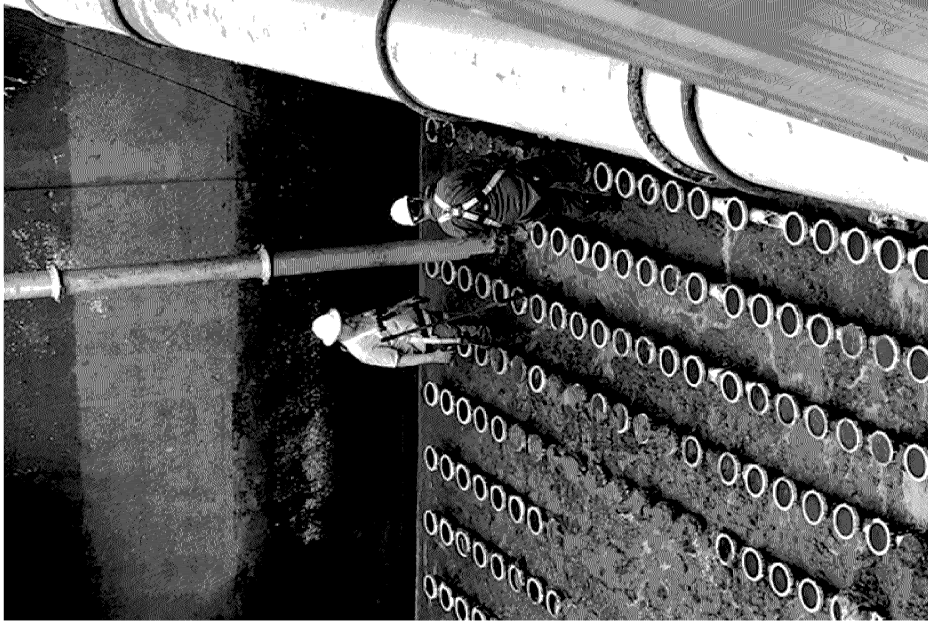
- Tanks mitigate pressure surges and water hammer
- Failed tanks result in fitting, pipe and joint failures
- System provides water to critical processes
- Veolia has received quotes to replace

PLAN OBJECTIVES_AB-CLEAN & INSPECT



- Sandy Vactor Truck & Crew assisting in Aeration Basin project
- Exposed diffusers
- Major O&M project

PLAN OBJECTIVES_AB-CLEAN & INSPECT

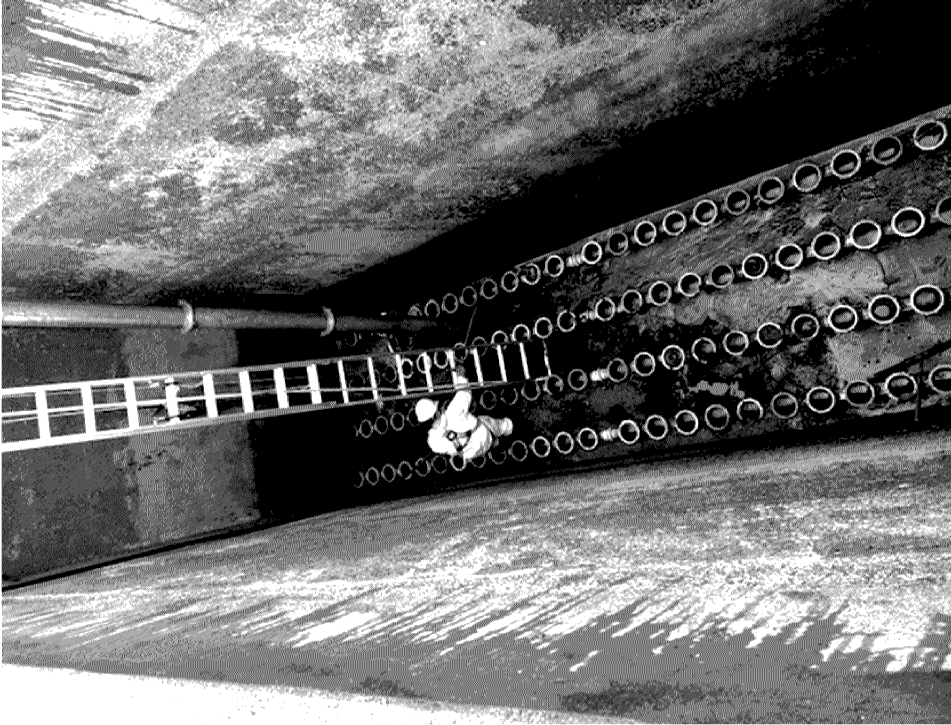


- Veolia O&M Staff cleaning and inspecting air diffuser system
- Confined Space procedures used to insure worker safety

PLAN OBJECTIVES_AB-CLEAN & INSPECT



- Selector Zone –
Anoxic
- Blinded diffusers
- Excessive Grit



PLAN OBJECTIVES_AB-CLEAN & INSPECT



- Main air diffuser distribution piping Sheared in selector zone
- Sheared diffuser piping was valved off from the network
- Sheared pipe resulted in no air supplied to this section of the secondary process
- Section has been repaired



WWTP CONDITION SUMMARY

- The following processes & equipment were either inoperable or required some level of repair:
 - Belt Press
 - Head Works
 - Grit Removal
 - Screening
 - Drive mechanism
 - PistaGrit
 - Cont....

WWTP CONDITION SUMMARY

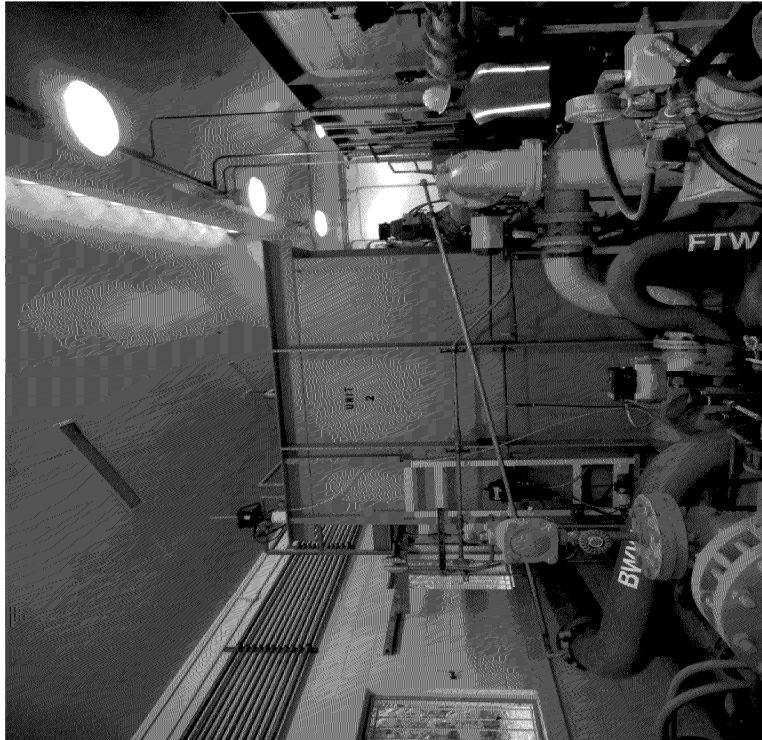
- Secondary Sludge (Waste Activated Sludge) Pump
- Process Water Pumps
- Chlorine Storage and Delivery System
- Instruments and Controls
 - General lack of control loop integrity
 - Instruments inoperable, obsolete, most not working as intended
 - Aeration basin air control loop (critical process control feature); instruments and control loop in failed state

WATER TREATMENT PLANT (WTP) CONDITION

- Two of three filter units are inoperable and in a failed state
- One filter unit is currently in operation but internal automation is not functional
 - No automated backwash
 - No flow modulation
 - No internal alarm functionality

WTP CONDITION

Filter #2



Filter #3





SUMMARY

- Veolia commenced contract O&M Services with the City of Sandy March 1, 2019
- At the request of the Oregon DEQ, Veolia submitted an initial (3-month) Operations Plan
- Most of the objectives in the Operations Plan have been addressed and/or achieved.
- Overall facility condition is improved but there is more to be accomplished on some objectives
- The initial condition of both the wastewater treatment plant and water treatments plant was poor with many critical components inoperable or with limited functionality

DISCUSSION

- Veolia's efforts so far in Sandy have had a strong focus on addressing the mechanical, electrical, instrumentation and control issues at both the water and wastewater treatment plants
- So far, the repair efforts have focused on the WWTP due to the immediate needs and regulatory sensitivity
- Given the initial condition of the facility with major unit processes not fully functional, there have been regulatory excursions
 - These are predictable and unavoidable given the overall system functionality and limitations

DISCUSSION

- A disproportionate amount of staff time has been spent repairing or reacting to system failures relative to normal operations
- As the facility issues are addressed and are resolved the focus will shift to a more proactive mode of operation.
 - Spend more time on preventive maintenance rather than reactive/corrective maintenance
 - Utilizing a formal process control approach, spend more time maximizing process efficiency and effectiveness
 - Maximizing the secondary process, including AB Selectors was a goal of the IOP. This has not been achieved to the desired level in the initial several months of operations
 - Process effectiveness is critical to permit compliance
 - Mechanical integrity is critical to process effectiveness



Wrapping Up

Questions

Or

Comments

The Road to 2020 and the City of Sandy

Sarah Bushore
Partnership Specialist
US Census Bureau
September 2019

Why We Do a Census

- Article 1, Section 2 of the US Constitution
The actual Enumeration shall be made within three Years after the first Meeting of the Congress of the United States, and within every subsequent Term of ten Years, in such Manner as they shall by Law direct.
- Key purpose is apportioning the 435 seats belonging to the US House of Representatives.

Funding

More than \$883 Billion each year

Examples:

- ✓ Medicaid
- ✓ SNAP/WIC
- ✓ Transportation Planning
- ✓ Student Loans/Pell Grants
- ✓ Section 8 Housing
- ✓ School Lunch Program
- ✓ Head Start

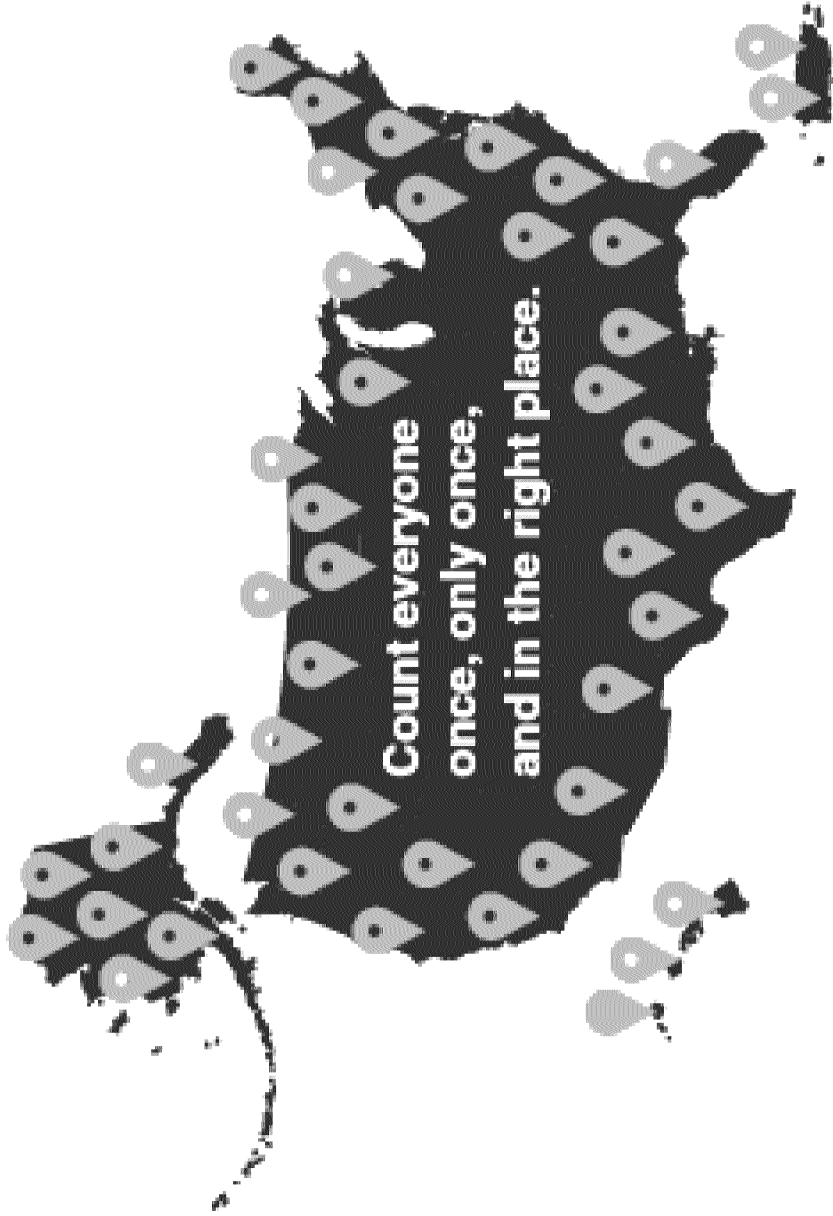


Oregon

**Received \$13.5
Billion in 2016**

Source: Reamer (2019). *Counting for Dollars 2020*: The George Washington University

2020 Census Goal



U.S. Department of Commerce
Economics and Statistics Administration
U.S. CENSUS BUREAU
census.gov

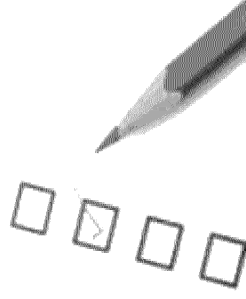
United States[™]
Census
Bureau

Our Challenge:

- By September 2020, throughout the U.S., we will count approximately 330 million people living in 140 million housing units in order to obtain a complete and accurate count.
- In Oregon, using July 2018 estimates, we expect there are 4.2 million people living in 1.8 million housing units that will need to be counted.
- In the City of Sandy, there are approximately 10,581 people living in 4,075 housing units. (2017 est)

New Ability to Self Respond Starting March 12, 2020

- Internet
- Phone
- Paper



Or traditional in-person interview

The Process

March 12 – July 24, 2020

- Five invitations to self-report will be mailed out. The fourth invitation/mailer will include the traditional short form that can be mailed back.
- Potentially three enumerator visits.
- User ID is helpful but not required to respond.

What Do We Ask?

1. Address
2. Phone Number
3. Count of Each Person At That Address
4. Name
5. Gender
6. Age and Date of Birth
7. Race
8. Hispanic, Latino or Spanish Origin
9. Whether Someone Lives Somewhere Else
10. Relationship



Languages

Internet Self-Response	Paper Form	Questionnaire Help	Enumerators, Mailed Items	Language Card and Guides
English	English	13 languages	English	59 languages
Spanish	Spanish		Spanish	
Chinese (Simp.)		Plus TDD		Plus ASL
Vietnamese				Plus Braille
Korean				Plus Large Print
Russian				
Arabic				
Tagalog				
Polish				
French				
Haitian Creole				
Portuguese				
Japanese				

Private and Confidential

- Only aggregate data reported
- Prohibited by law from releasing personal information to any person or organization
USC Title 13
- Life-time oath by all Census Bureau employees
- Penalties for wrongful disclosure: Up to 5 years imprisonment and/or a fine of \$250,000



Hard-to-Count Populations

- Seniors
- Children younger than 5
- Renters
- Homeless
- Migrant workers
- Foreign-born/Immigrants
- Internet issues

Seniors Those 62 or Older

1,525 14.4%

Issues:

- Physical Isolation
- Mental Health
- Feeling they don't matter
- Access or ability to use the internet

Children Under the Age of Five

1,042 9.8%

Issues:

- Split Custody
- Children living in age restricted housing
- Byproduct of parents not responding

Renters

Renters 29.4% Owners 70.6%

Issues:

- More Transient/Frequent Movers
- Less Community Involvement
- Apathy?

The Homeless Count

In Clackamas County, using Point in Time (PIT) statistics of individuals living in sheltered and non-sheltered environments .

2017 - 497 2015 - 494

Using 2010 Census data, there were 22 homeless individuals living in Clackamas County and 3,024 in Oregon.

Migrant Workers Clackamas County

Using OSU info from June 2018, they estimate there were 2,062 individuals working in migrant jobs throughout Clackamas County and 28,940 living in Oregon in 2017.

This figure does not include family members who may accompany the worker.

Foreign Born Residents

<i>Naturalized Residents</i>	397
<i>Not a US Citizen</i>	255
Total Foreign Born	652

Issues:

- Language
- Fear
- Unaware of Constitutional Requirement

Internet Concerns

2020 marks the first time internet and phone options are available for self-reporting.

Issues:

- Familiarity
- Accessibility
- System Security
- Trust with information

Hard-to-Count Populations

- Seniors
- Children younger than 5
- Renters
- Homeless
- Migrant workers
- Foreign-born/Immigrants
- Internet issues

Oregon Partnership Specialists

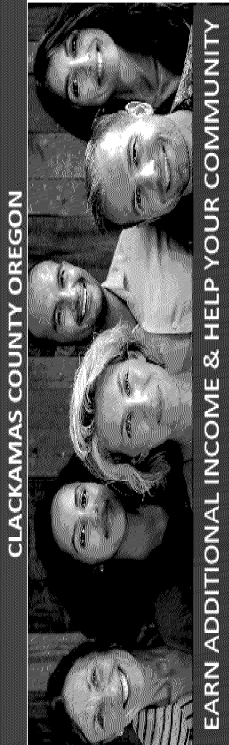
Purpose: Increase participation in the 2020 Census of those who are less likely to respond or are often missed.

- **Educate** people about the 2020 Census and foster cooperation with enumerators
- **Encourage** community partners to motivate people to self-respond
- **Engage** grass roots organizations to reach out to hard to count groups and those who aren't motivated to respond to the national campaign

Complete Count Committees

- Purpose is to identify, educate and enumerate the Hard-To-Count community.
- Tribal, state and local governments work together with partners in their communities to form CCCs to promote the 2020 Census to their constituents. Community-based organizations also establish CCCs that reach out to their members.
- Committee members are experts in the following areas:
 - Government
 - Education
 - Media
 - Community Organizations
 - Workforce development
 - Faith-Based Community
 - Business
 - Other, Based on Needs

Recruiting



EARN ADDITIONAL INCOME & HELP YOUR COMMUNITY

2020 Census Supervisory & Non-Supervisory Positions Available in Clackamas County, OR

Enumerators \$18.00/hr. – paid training at \$16.00/hr. Census Field Supervisors - \$20.00/hr. – paid training at \$18.00/hr.

Earn extra income while helping your community. The U.S. Census Bureau is recruiting thousands of people across the country to assist with the 2020 Census count.

Job Details

We are hiring for a variety of temporary jobs, including census takers, and supervisory staff. To be eligible, you must be at least 18 years old, have a valid Social Security number, and be a U.S. citizen.

How to Apply

Candidates must complete an online job application. The application includes assessment questions about your education, work, and other experience. www.2020census.gov/jobs

Additional advantages

One (1) application covers all our positions, saving you time and effort to find the perfect fit. If you can work a smart phone, you can do this job.

Hiring this winter and again in the summer of 2019

Working with the 2020 Census is a flexible job that you can fit in with your existing commitments.

It's a perfect way to supplement your income while making history!

Qualifying is easy, no special education or experience required. No resume!

Application process takes about 20 minutes to complete.

Apply Today!

2020census.gov/jobs

Federal Relay Service: (800) 877-8339 TTY / ASCII www.fsa.gov/fedrel

United States[™]
Census Bureau
U.S. Department of Commerce
Economics and Statistics Administration
U.S. CENSUS BUREAU
census.gov

Thank you.

Sarah Bushore
Partnership Specialist
U.S. Census Bureau

sarah.m.bushore@2020census.gov
(971) 409-9250

United States[™]
Census
Bureau

U.S. Department of Commerce
Economics and Statistics Administration
U.S. CENSUS BUREAU
census.gov

23



Staff Report

Meeting Date: September 16, 2019
From Greg Brewster, Interim IT/SandyNet Director
SUBJECT: Clackamas County IGA with SandyNet

Background:

Clackamas Broadband eXchange (CBX) is proposing to enter into an IGA with SandyNet to provide construction services along Kelso road for an upcoming project. The project will span from the intersection of Kelso Road and Orient Drive and west to the on-ramp of Kelso and Hwy 26. The construction includes 2,300 feet of buried conduit and the placement of vaults. In addition to performing construction for CBX, SandyNet is able to place its own dedicated conduit and vaults for future expansion into the area.

Both parties performed preliminary planning to determine a cost per foot of conduit that will benefit both parties. Set at \$10 per ft, SandyNet can install both conduits and break even on its costs. The goal for SandyNet in completing this project is to implement additional infrastructure with no additional impact to SandyNet's budget. Successful completion of this project will work towards converting existing wireless customers on Kelso Road to fiber service.

Recommendation:

Staff respectfully recommends City Council approval for the City Manager to enter into the IGA with Clackamas County.

Budgetary Impact:

At \$10 per foot of conduit laid and 2300 ft of conduit to be installed, SandyNet has the opportunity to generate \$23,000 to \$27,000 in construction revenue. Costs are not expected to exceed generated revenue.



Staff Report

Meeting Date: September 16, 2019
From Mike Walker, Public Works Director
SUBJECT: Public Hearing - Wastewater Facilities Plan

Background:

The City entered into an agreement with Murraysmith, Inc. in February of 2018 to prepare a Wastewater Facilities Plan for the collections (piping) and treatment systems. A Facilities Plan is a document that:

- Reviews the existing condition of the wastewater collection and treatment systems
- Examines the impacts of existing and anticipated future Federal and State regulations
- Makes recommendations for improvements and new facilities required to accommodate population growth and comply with regulatory requirements
- Prepares cost estimates for necessary improvements and facilities
- Explores and ranks several alternatives to arrive at a solution that responds to regulatory, environmental and financial constraints.

Due to the regulatory limitations imposed on treated wastewater discharges in the Clackamas Basin and the typically low irrigation demand during the months of April, May and October it became apparent that expansion of treatment capacity in this river basin was not viable on a long term basis. The highest ranked alternative consisted reduction of stormwater inflow and infiltration (I&I) into the collection system; improvements to the existing treatment plant and construction of a new satellite treatment plant, pump station and discharge to the Sandy River Basin.

A Council work session on the Facilities Plan was held on December 11, 2018 and a public presentation on the Plan was conducted on February 13, 2019. A digital version of the Plan was placed on the City's website and hard copies were made available at the Sandy Public Library starting in January 2019. The public comment period on the Plan closed on August 1, 2019. We received four written comments; one from the Clackamas River Basin Council, one from the Sandy River Watershed Council, one from the General Manager of Iseli Nursery and one from a Sandy River property owner. These comments and responses will be included in the record with any comments or questions received at Monday's hearing for review by the Council prior the October 7th City Council meeting where the Plan is scheduled for adoption.

In May, members of the City Council and representatives from interest groups toured several advanced treatment facilities (Clackamas County, Dundee, Forest Grove) that produce "near-drinking water quality" effluent including the innovative wetlands treatment facility at Fern Hill in Washington County. The City also secured \$500,000 in funding from the Legislature to

further study 'green' or 'soft path' alternatives for discharge or reuse of high quality wastewater from the satellite new treatment facility and vet options including export of wastewater to Clackamas County Water Environment Services or City of Gresham treatment plants.

Based on comments received from the public and interest groups Staff proposes that the City continue to pursue the highest ranked alternative from the Plan (Sandy Basin) but not finalize the means or methods of discharge until we have the opportunity to complete the study of alternatives to a traditional "pipe to the river" discharge. A separate public review, comment and adoption process for the discharge alternatives will be part of this Phase II analysis.

A team from Murraysmith will provide a "light" version of the February presentation prior to opening of the public hearing by the Mayor.

The facilities plan can be found online at <https://www.ci.sandy.or.us/sewer-wastewater-system-facilities-plan>.

Recommendation:

After the presentation open the hearing and call for testimony or comments from the public.



Staff Report

Meeting Date: September 16, 2019

From Mike Walker, Public Works Director

SUBJECT: Proposed Wastewater and Water Rate Increases

Background:

The City of Sandy's wastewater utility needs significant investments. The recently completed Wastewater System Facilities Plan identifies the capital improvements needed to fix our existing system and make improvements and upgrades to treat the wastewater to comply with laws that protect our streams and rivers.

The multi-year and multi-phased project includes fixing our existing pipes to reduce groundwater and stormwater inflow and infiltration, upgrading our existing wastewater treatment plant, and building a second treatment facility and a new discharge to the Sandy River.

The funding needed is significant and customers' monthly sewer rates will need to increase to support these projects. The city is working with state and federal agencies to secure funding and low interest loans to lessen the impact on ratepayers.

Utility rates in Sandy have historically been very low, much lower than most Oregon communities. These low rates mean funds have not been available or extra cash saved to make large capital investments in the city's wastewater system. While final costs for the projects are not yet known, it will be in the tens of millions and it is clear that Sandy's rates will need to increase to be in line with other communities making wastewater investments where sewer rates are typically \$50 per month or more (see attachment 2 for a comparison).

In addition, the City is preparing for anticipated future capital projects for our water utility. The utility rate model for the water utility was also updated to reflect the current capital improvement plan and anticipated projects.

Wastewater Rate Increases

The city contracted with FCS group to prepare a new utility rate model and new System Development Charge methodology with the information from the 2019 System Facilities Plan. While the spending over the fiscal years is variable depending on many factors such as design and permitting, the total cost of the capital improvement plan is \$85 million over the next ten years. The plan assumes \$7.3 million in revenue bond debt to

be issued next year for the work that must be done immediately on the existing plant and pipes.

On September 3, the updated rate model was presented to the Council with an explanation of the different assumptions and variables that impact the forecasted rate increases. The model provides the ability to adjust the assumptions such as growth and cost escalation. The rate model also assumes the City will be successful in securing a Water Infrastructure Finance and Innovation Act (Loan) that has favorable terms such as debt payments starting five years after completion of the project.

The wastewater revenue requirement section in the FCS report describes the factors and assumptions for the rate increases in further detail (attachment 1).

In summary, the city needs to significantly increase wastewater utility rates now in order to raise the revenue required for the \$7.3 million revenue bond to be issued next year. The proposed rate increase is 102% over our existing rates. In actual dollars, the average residential customer in Sandy would see the wastewater portion of their utility bill increase to \$49.38 per month from \$24.94.

The recommended increases for the next 7 years reflects the following:

	2019	2020 Budgeted	2020 Additional Proposed	2021 Projected	2022 Projected	2023 Projected	2024 Projected	2025 Projected	2026 Projected
Rate Increase		4%	98%	16%	15%	10%	10%	10%	10%
Residential									
Base	\$9.82	\$10.21	\$19.44	\$22.25	\$25.94	\$28.53	\$31.38	\$34.52	\$37.98
Volume (CCF)	\$2.52	\$2.62	\$4.99	\$5.79	\$6.66	\$7.32	\$8.05	\$8.86	\$9.75
Outside City Flat Rate	\$35.42	\$36.84	\$70.13	\$81.35	\$93.56	\$102.91	\$113.20	\$124.52	\$136.97
Commercial									
Base	\$9.82	\$10.21	\$19.44	\$22.55	\$25.94	\$28.53	\$31.38	\$34.52	\$37.98
Volume (CCF)	\$3.42	\$3.56	\$6.77	\$7.86	\$9.03	\$9.94	\$10.93	\$12.02	\$13.23

Water Rate Increases

Like the wastewater utility, the water utility rates fund operating and maintenance expenses, existing debt service, and future capital improvements. The city will be updating our water master plan in the upcoming year, but the current capital improvement plan forecasts spending of \$8.2 million over the next ten years. The model recommends a 5% increase over the existing budgeted increase of 4% for this fiscal year. The recommended and projected rate increases reflect the following:

2020 Budgeted	2020 Additional	2021	2022	2023	2024
4%	5%	4%	3%	2%	2%

Historic Rate Increases

Utility rates have been historically low in Sandy with small or no rate increase over the last several years. As a result we need to significantly increase rates now and in the immediate future to generate the revenue necessary to fund the needed investments in our essential utility infrastructure.

Year	Water	Wastewater
2018	0%	0%
2017	4%	5%
2016	3%	4%
2015	0%	0%
2014	4%	6%
2013	6%	0%
2012	6%	0%
2011	6%	0%
2010	0%	0%
2009	0%	0%

Utility Rate Assistant Programs

We are also continuing to research rate assistance programs and models that can help reduce the burden on low income residents. If there is Council interest, we will return with options to consider.

Recommendation:

Staff recommends the Council provide input and direction on the proposed rate increases for the wastewater and water utilities. The rate adjustment resolution will be brought back to the City Council for adoption on October 7. The rates would become effective with the November - December billing cycle with customers receiving utility bills with the new rates during the 3rd week of December.

Sewage from Sandy's homes and businesses is treated at the City's wastewater treatment plant located on SE Jarl Road. Despite improved operations, the plant has been unable to reliably meet our permit requirements. Sandy is also a growing community – in just 20 years our population has doubled to 11,000 residents and will double again over the next 20. **Investments are needed now to treat that wastewater and comply with laws designed to protect our streams and rivers.**

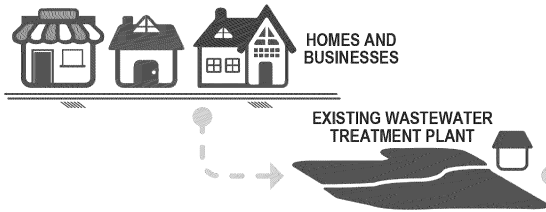
Where does sewage go when it leaves my home or business?

Sewage travels through a network of buried pipelines and pumps (the sewer collection system) to Sandy's wastewater treatment plant. The final use of the water from the treatment plant depends on time of year.



The City of Sandy is working closely with the Oregon Department of Environmental Quality (DEQ) to address Sandy's wastewater challenges.

Sandy is committed to keeping customers informed about plans for wastewater improvements, protecting water quality in local streams and rivers and keeping it affordable.



In summer the City produces highly treated "recycled water" used to irrigate plants at a nearby nursery. The City is proud to be conserving water resources through our water recycling program.

In winter treated water is returned to Tickle Creek (which goes into the Clackamas River). Higher winter flows from rain and snow increase the creek's capability to accept treated wastewater without harming fish.

Interested in learning more?

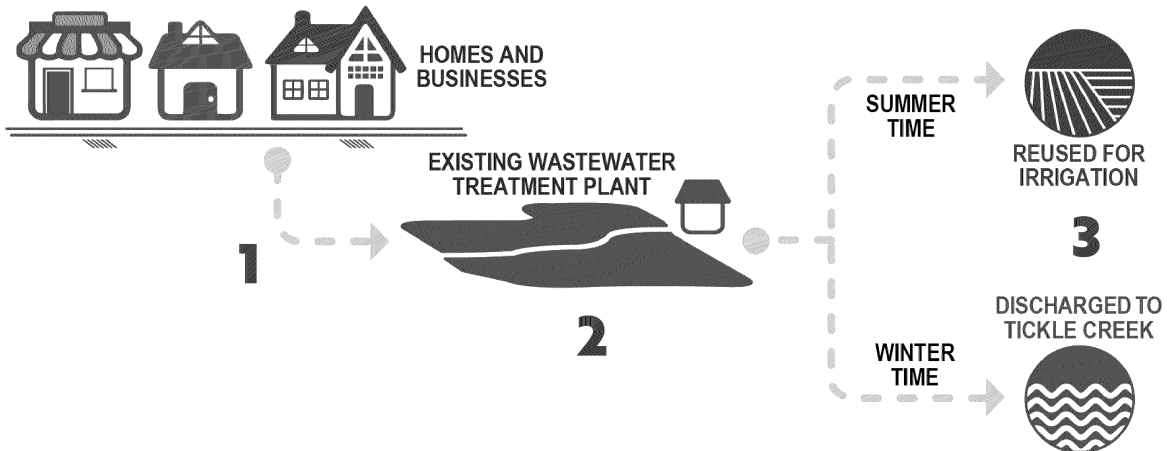
- Attend a City Council session on the Wastewater Facilities Plan and projected rates:
Monday, September 16, 7:00 p.m. at City Hall
- Information is also available on our website at www.ci.sandy.or.us/sewer-wastewater-system-facilities-plan

Or you can contact wfp@ci.sandy.or.us – or – 503-668-5533



Fixing the problems

Fixing Sandy's wastewater problems will require significant investments. The City is working to make needed improvements as affordable as possible, including working with our state and federal agencies to secure funding. However, customers' monthly sewer rates will rise to help support the project. Development fees (called System Development Charges) will also increase to ensure that new development pays its fair share.



What's wrong now?

What is Sandy doing?

- 1** **Leaky sewers** – Sandy's sewer pipelines are aging. As they get older, they leak, allowing groundwater and stormwater to enter the sewers and mix with wastewater in the pipes. The City then has to treat groundwater and stormwater along with wastewater. This problem is called inflow and infiltration (I&I).
- 2** **Wastewater treatment plant** – Sandy's wastewater plant is also aging and isn't performing as designed – the treated wastewater often doesn't meet federal and state requirements. The plant also lacks capacity to serve new residents and businesses.
- 3** **Discharge to Tickle Creek** – Tickle Creek flows into the Clackamas River which has special protections under state law. Those laws prevent Sandy from increasing the amount of treated wastewater released to Tickle Creek as the population grows.

- Sewer system improvements** – The City will repair and replace aging sewer pipelines and disconnect storm drains from the sewer. The City is currently identifying locations with the highest I&I flows where improvements can be made most cost-effectively. These improvements also reduce the volume of water to be treated and discharged from the wastewater plant.
- Treatment plant upgrades** – Sandy is investing in upgrades to the existing plant to bring it into regulatory compliance and make the most of our community's past investments. However, upgrading the existing plant to meet all of Sandy's long-term needs isn't feasible.
- A new path forward** – Studies show the best path forward for Sandy is to build a second wastewater treatment plant. The new plant will use state-of-art membrane technology producing high quality water similar to what comes out of your tap. Plans call for the highly treated water from this new facility to be released to the Sandy River.

Looking Ahead to Sandy's Future Utility Rates

