

Pool Exploratory Task Force Update

November 1, 2021

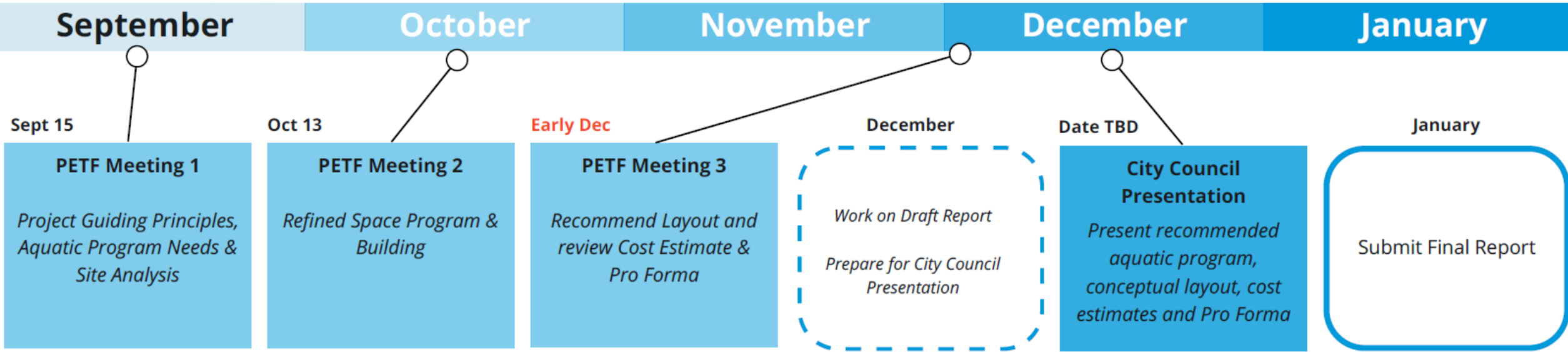


PETF Roster

- Kacie Bund, Chair
- Meagan Lancaster, Vice Chair
- Grant Hayball
- Jan Sharman
- Blake Smith
- Mark Smith
- Councilor Hokanson
- Councilor Walker
- Councilor Exner

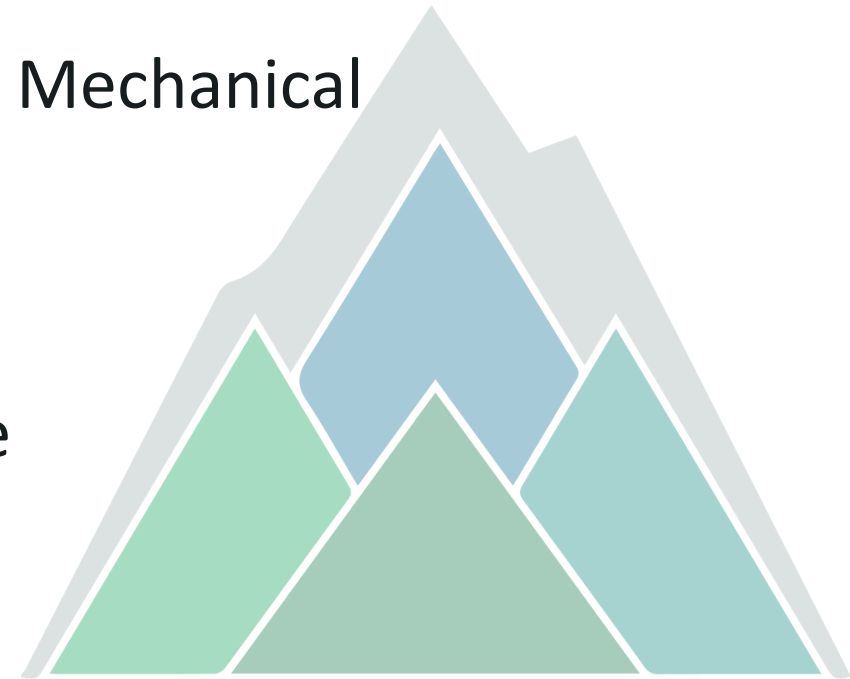


PETF Process



PETF Guiding Principles

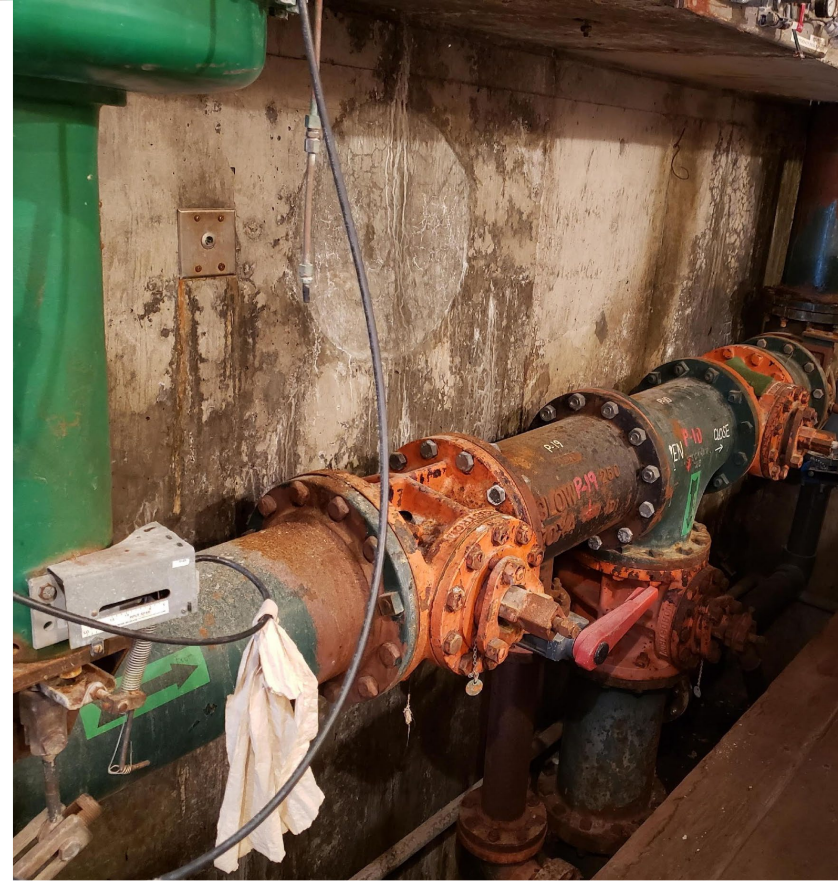
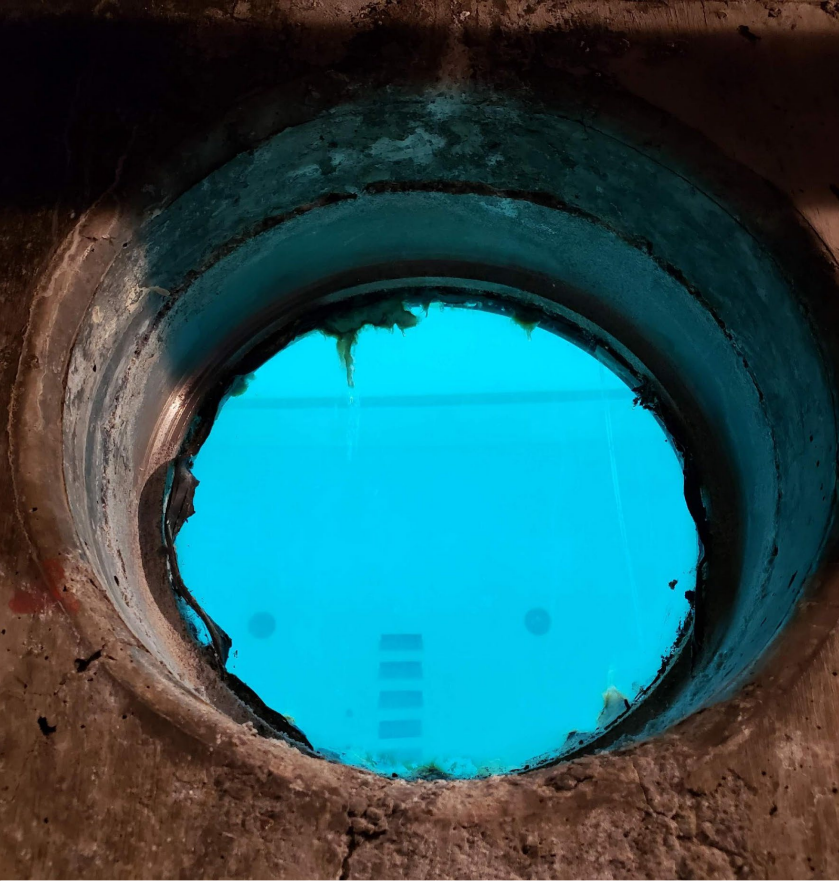
- Accommodate Lap and Recreation Swim Programs
- Provide Operationally Efficient Layout
- Meet Cost Recovery Goals
- Develop Cost Effective Parking Layout
- Integrate Convenient Service Access to Aquatic Mechanical
- Maximize Value of Investment
- Work Within Budget Constraints
- Compelling Vision for Successful Bond Initiative





Existing Aquatic Center Assessment

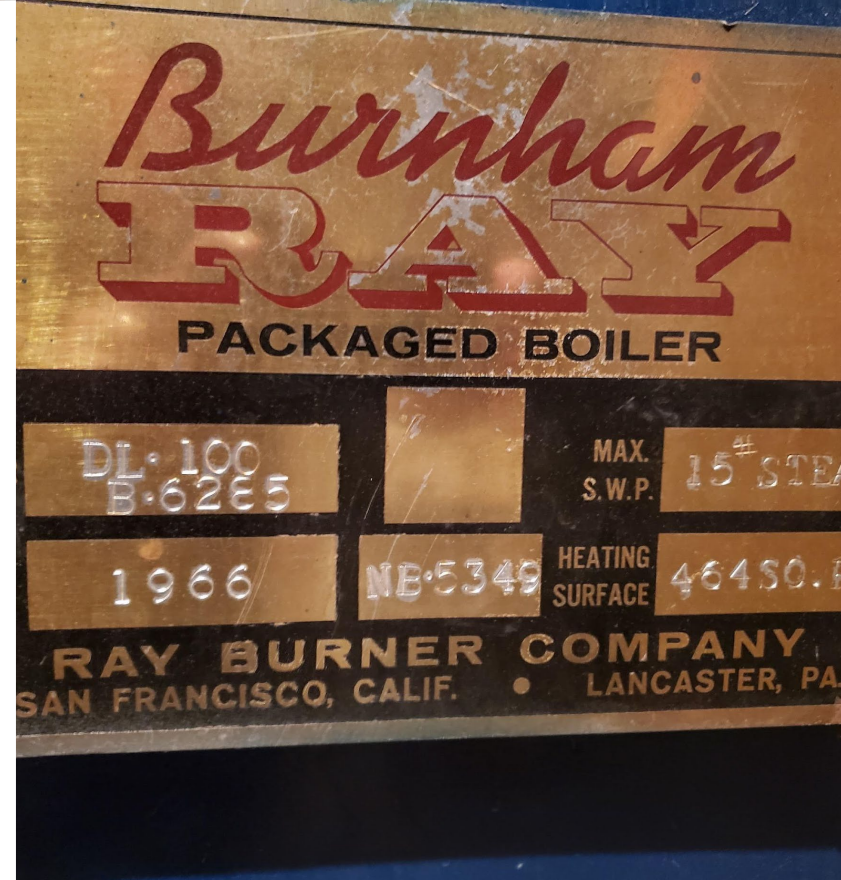
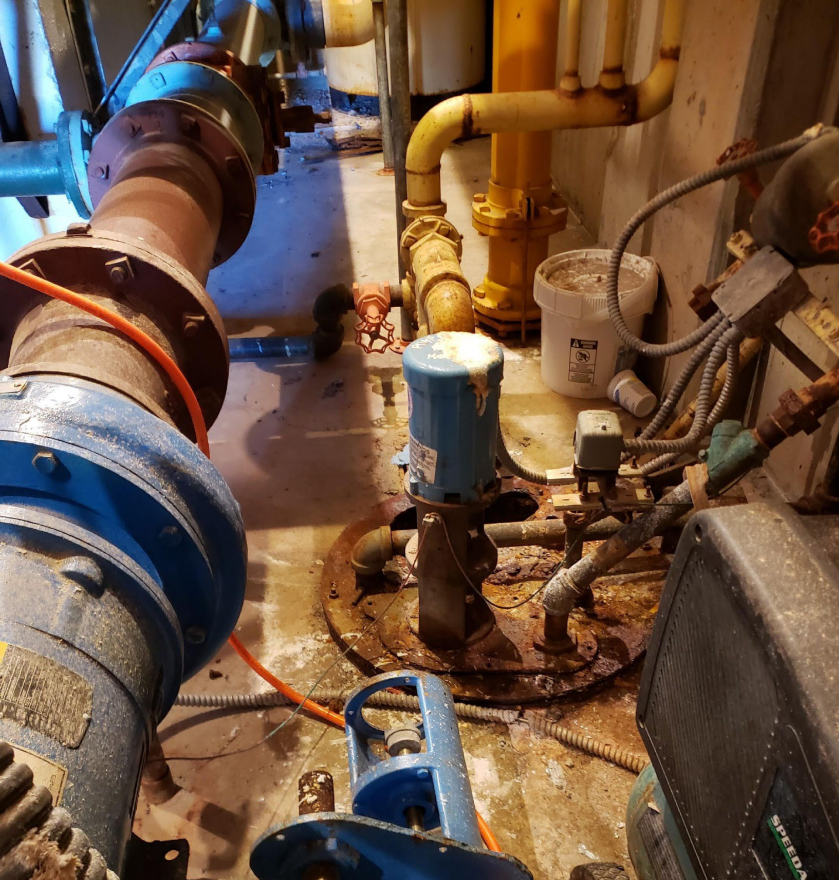
- PETF tour in July 2021
- Existing Aquatic Center has deteriorated significantly, even since last assessment in late 2017.
- Task Force determined that short-term repair and reopening of the existing facility is not a viable option



Assessment Tour Photos



Assessment Tour Photos



Assessment Tour Photos



Facility Feature Priorities

Recreation Pool

- Lazy river
- Slides
- Kid's pool
- Hydrotherapy
- Inflatables

Competition Pool

- Swim team practice & meets
- Bleachers
- Water Polo
- Lap swimming



Facility Feature Priorities

Other

- Hot Tub
- Party rental rooms
- Restrooms / locker rooms
- Universal changing rooms
- Storage for long- term renters
- Aquatic equipment storage
- Lifeguard / office space
- Lobby w/ seating / pool views
- Snack bar / vendors

Pool Options for Evaluation

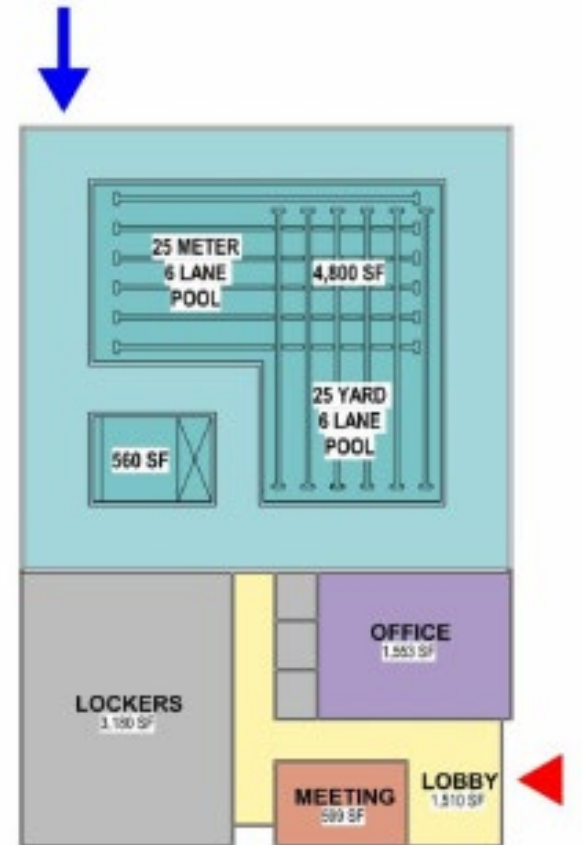
Option 1

Long-term renovation of existing pool facility as currently configured

- 25-yard x 25-meter pool (4,800 sf of water)
- Existing wading pool (560 sf of water)



No recreation pool:
not a viable option



Pool Options for Evaluation

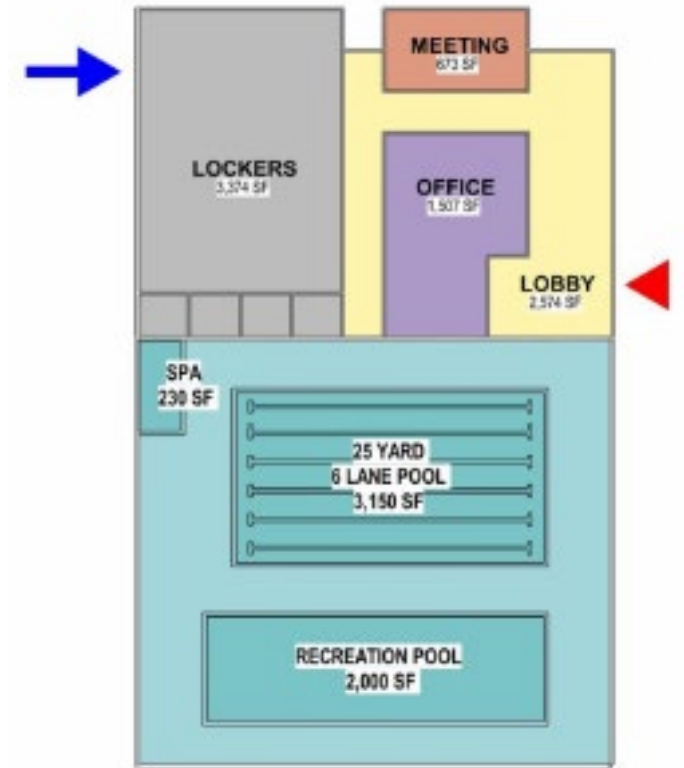
Option 2a

Reconfiguration of existing facility w/ new pools

- 25-yard lap pool (3,150 sf of water)
- Recreation pool (2,000 sf of water)
- Spa (230 sf of water)



Rec pool too small:
not a viable option



Pool Options for Evaluation

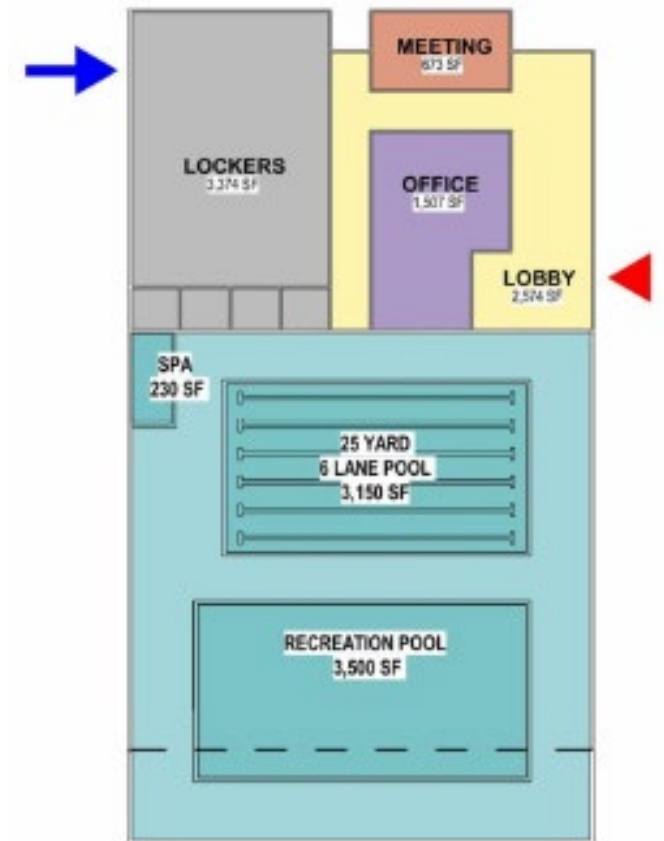
Option 2b

Reconfiguration of existing facility w/ new pools, plus addition to the south

- 25-yard lap pool (3,150 sf of water)
- Recreation pool (3,500 sf of water)
- Spa (230 sf of water)



Viable option: proceeding with further evaluation



Pool Options for Evaluation

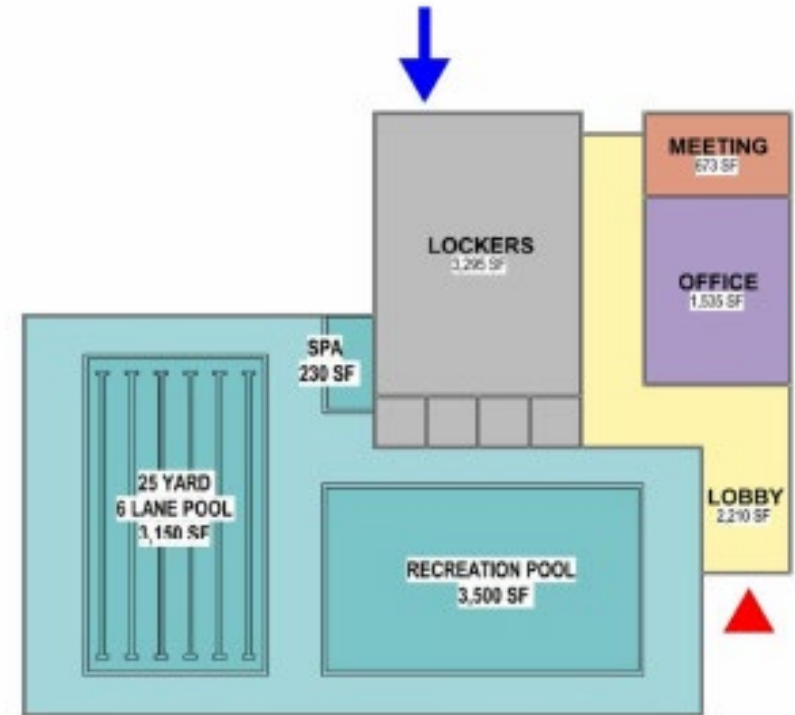
Option 3

New pool facility, elsewhere on Community Campus site.

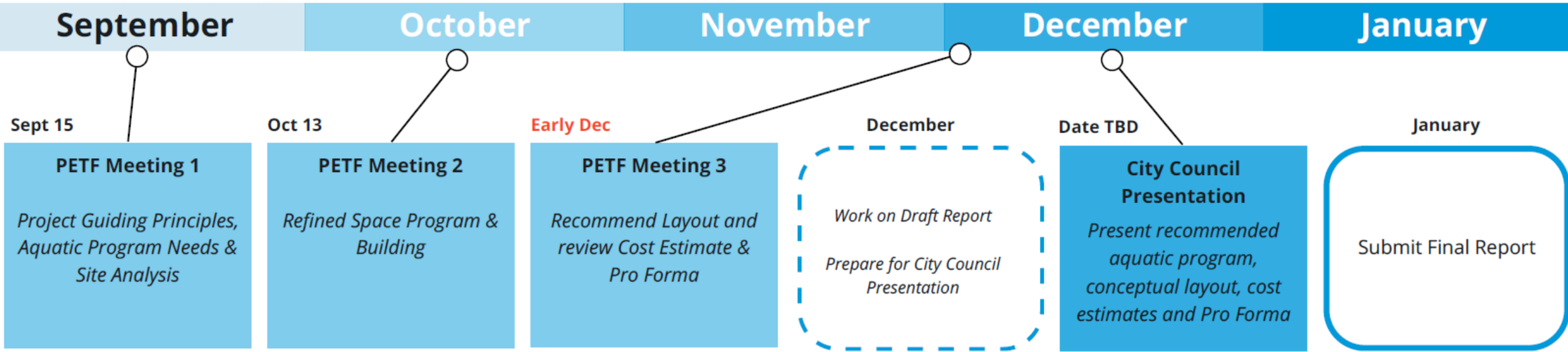
- 25-yard lap pool (3,150 sf of water)
- Recreation pool (3,500 sf of water)
- Spa (230 sf of water)



Viable option: proceeding with further evaluation



Next Steps



September

October

November

December

January

Sept 15

Oct 13

Early Dec

December

Date TBD

January

PETF Meeting 1

*Project Guiding Principles,
Aquatic Program Needs &
Site Analysis*

PETF Meeting 2

*Refined Space Program &
Building*

PETF Meeting 3

*Recommend Layout and
review Cost Estimate &
Pro Forma*

*Work on Draft Report
Prepare for City Council
Presentation*

**City Council
Presentation**

*Present recommended
aquatic program,
conceptual layout, cost
estimates and Pro Forma*

Submit Final Report