

EXISTING CONDITIONS SURVEY

LEGAL DESCRIPTION:

PARCEL 4, PARTITION PLAT NO. 2018-112, RECORDED NOVEMBER 01, 2018 AS FEE NO. 2018-067073.

OWNER INFORMATION:

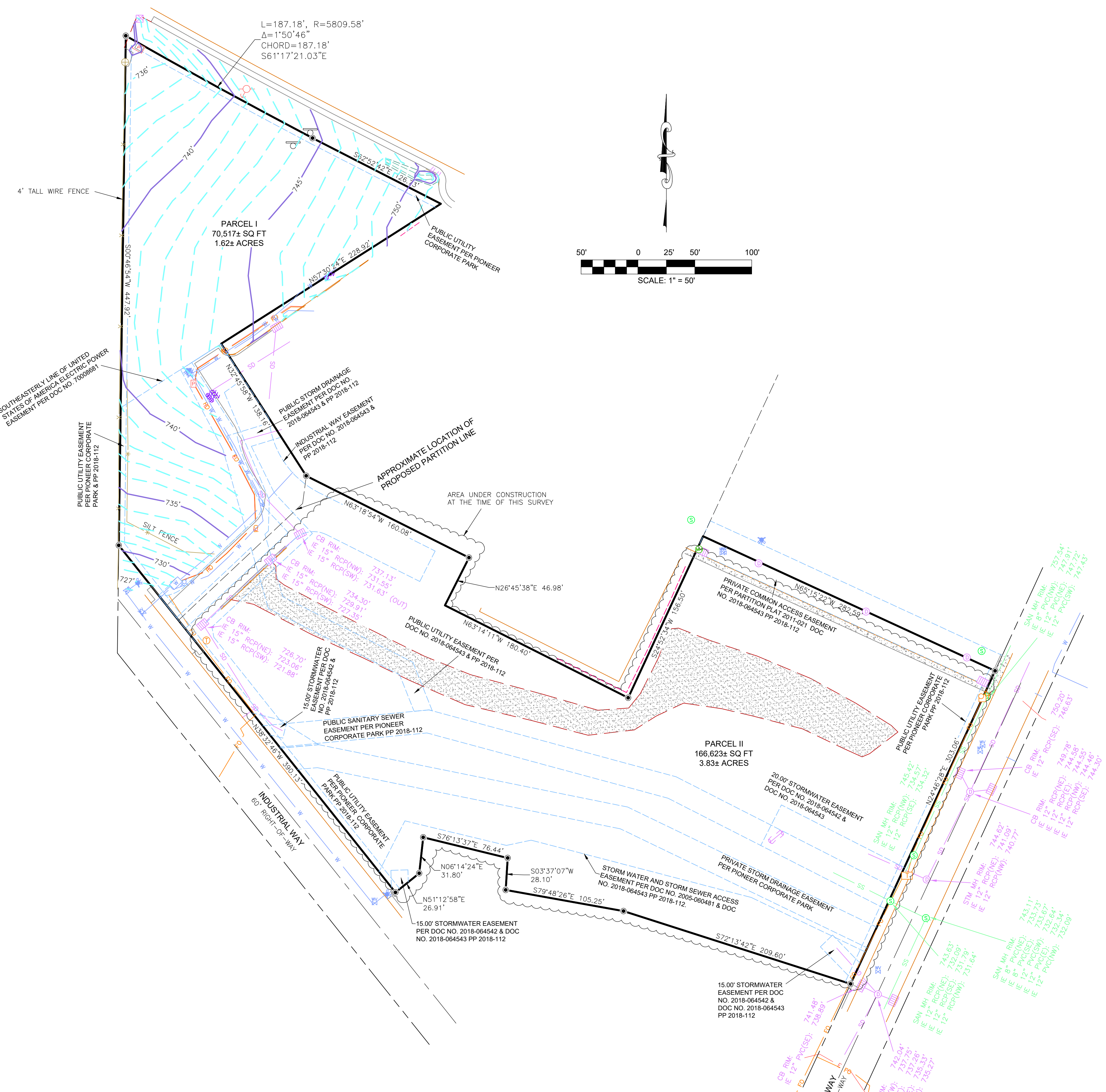
FREELUP STORAGE SANDY, LLC
1440 BRICKYARD RD, SUITE 4
GOLDEN, CO 80403

ZONING:

ZONED I1 (INDUSTRIAL PARK) PER CITY OF SANDY ZONING MAP.

LEGEND:

	BOUNDARY LINE
	CENTERLINE
	RIGHT OF WAY
	EASEMENT
	FLOW LINE CURB
	STANDARD CURB
	EDGE OF CONCRETE
	EDGE OF GRAVEL
	WATER
	STORM SEWER
	ELECTRIC
	FIBER OPTIC
	SANITARY SEWER MANHOLE
	STORM CATCH BASIN
	STORM MANHOLE
	TELEPHONE RISER
	CATV RISER
	WATER FIRE DEPT. CONNECT
	FIRE HYDRANT
	WATER VALVE
	WATER VAULT
	TELEPHONE MANHOLE
	TELEPHONE VAULT



S&F Land Services

PORTLAND, VANCOUVER, BEND, SEASIDE

901 NW CARLON AVE, SUITE 3
BEND, OR 97703
(541) 797-0954

WWW.SFLANDS.COM	EMAIL: INFO@SFLANDS.COM			
DATE	JOB NO.	FIELD	DRAWN	CHECKED
JAN. 25, 2021	2021-418-01	AM/EW	BRD	CCS

SURVEY FOR:

PRELIMINARY
PARTITION PLAT

REPLAT OF TRACT 4 OF PP 2018-112
LOCATED IN SE 1/4 OF SECTION 10
T.2S., R.4E., WM

CITY OF SANDY
CLACKAMAS COUNTY, OREGON

2141801_Existing Conditions.dwg