



State Street Homes project in Sandy (38015 Highway 26)

RIKLI Anthony <Anthony.RIKLI@odot.oregon.gov>

Wed, Dec 21, 2022 at 1:52 PM

To: Emily Meharg <emeharg@ci.sandy.or.us>, "Kelly O'Neill Jr." <koneill@ci.sandy.or.us>

Cc: COX Robert W <Robert.W.COX@odot.oregon.gov>

Hi Emily and Kelly,

Recently, and I'm sure before my time, with shared accesses we have seen issues where if the access is strictly located on one parcel or another, folks within that parcel have been known to block the access and prevent folks who are legally allowed to use the access entrance onto our facilities. This usually becomes an issue and through some form or another we are fighting an uphill battle to keep the shared access and have to allow another access to our facility. This then creates the potential for more conflict points on our facility, decreasing safety and, more often than not, does not fit within our spacing standard set in Division 51.

That said, the new location for this access will have a center line on the shared tax lot line of TL 902 and TL 1000 therefore removing that likelihood of one owner blocking another's right to access our roadway. A snapshot below shows the general location referenced.

Hope that helps!

Tony

Tony Rikli, PE

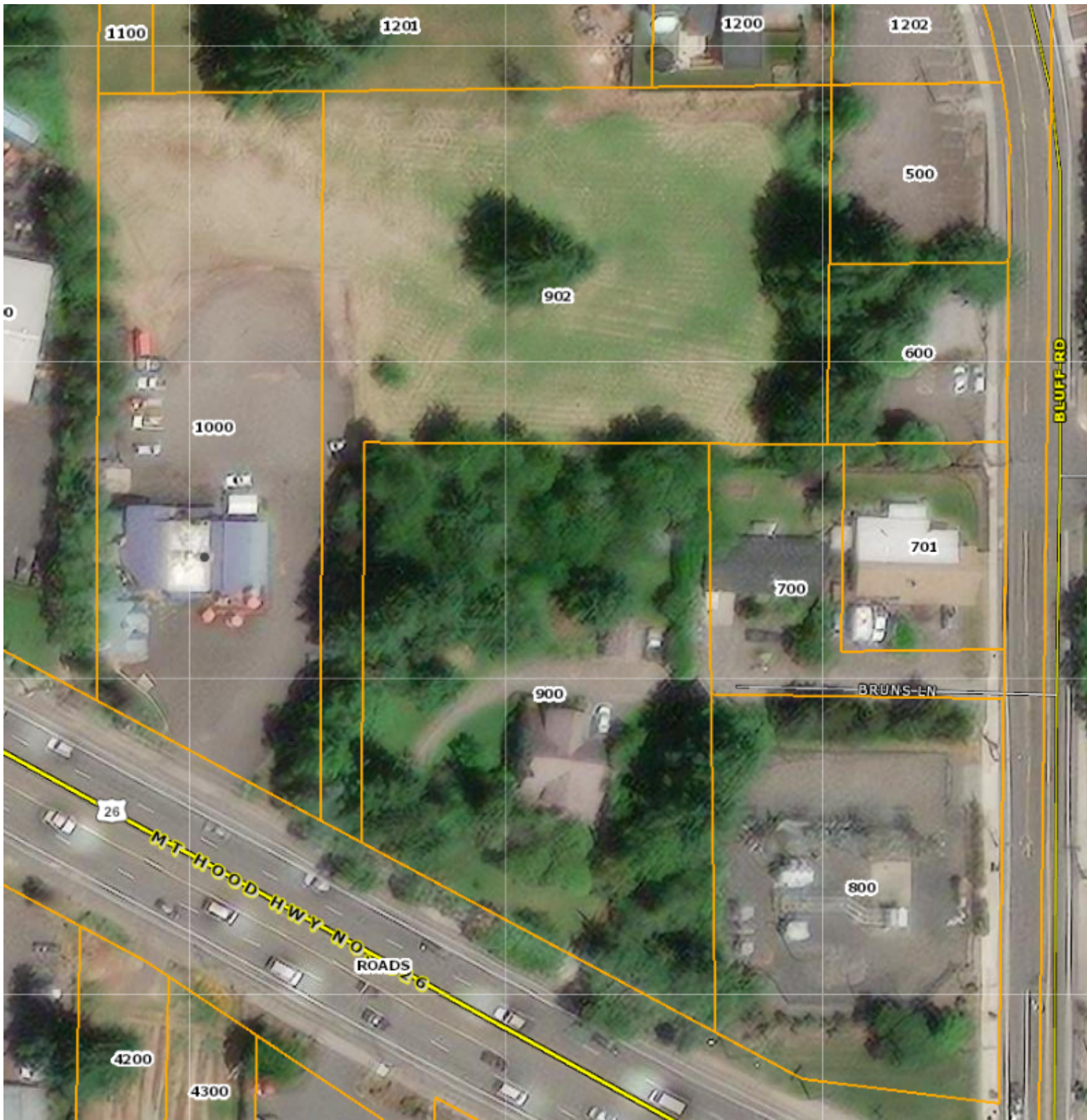
Region Access Management Engineer

ODOT Region 1 Garrett Building

(503) 731-8563 (office)

(503) 312-3407 (cell)

Anthony.RIKLI@odot.oregon.gov



[Quoted text hidden]