

STREET LIGHT SCHEDULE			
FIXTURE TYPE	MODEL NO.	MOUNTING HEIGHT	COMMENTS
A1	GCL1-80G-MV-WW-3R-GY-610-PCR7-RWG-WL-FDC-PGE	35FT	35FT AAST0-SPEC TAPERED STEEL POLE W/ 6FT ARM
A2			
A3			
B1			
B2			
B3	GCM2-40H-MV-WW-2R-GY-700-PCR7-RWG-WL-FDC-PGE	30FT	35FT DIRECT BURIED COMPOSITE POLE W/ 6FT ARM
B4			
B5			
C1			
C2			
C3	GCJ1-20H-MV-WW-2R-DB-700-PCR7-RWG-WL-FDC-PGE	30FT	35FT DIRECT BURIED COMPOSITE POLE W/ 6FT ARM
C4			
D1			
D2			
D3			
D4	GCJ1-20H-MV-WW-2R-DB-450-PCR7-RWG-WL-FDC-PGE	25FT	30FT DIRECT BURIED COMPOSITE POLE W/ 6FT ARM
D5			
D6			
D7			
D8			

NOTE:  
1. SCHEDULED STREET LIGHT FIXTURES AND POLE ARE TAKEN FROM PGE APPROVED MATERIALS LIST.

ELECTRICAL LEGEND (SOME SYMBOLS MAY NOT BE USED ON DRAWINGS)	
SYMBOL	DESCRIPTION
	UTILITY POLE
	HANDHOLE TYPE 1 W/ LOCKING LID PER WSDOT STANDARD PLAN J-40.10-03
	CONDUIT OR FEEDER SYMBOL: (SEE RACEWAY SCHEDULE) # - IDENTIFYING NUMBER
	STREET LIGHT - POLE AND FIXTURE
	PHOTOCELL
	BURRIED CONDUIT

- GENERAL NOTES
- REGULATORY REQUIREMENTS: COMPLY WITH OREGON STATE AND LOCAL ELECTRICAL AND BUILDING CODES. OBTAIN AND PAY FOR REQUIRED PERMITS. ALL WORK SHALL CONFORM TO CITY OF SANDY STREET LIGHTING STANDARDS AND SPECIFICATIONS.
  - SUBMITTALS: PROVIDE SUBMITTALS FOR ALL PRODUCTS AND BASIC MATERIALS FURNISHED FOR ELECTRICAL WORK.
  - EXISTING UNDERGROUND UTILITIES SHOWN ON PLANS ARE APPROXIMATE. VERIFY AND LOCATE ALL UNDERGROUND UTILITIES PRIOR TO EXCAVATION. CALL 811 FOR UTILITY LOCATE SERVICES.
  - CONDUCTORS SHALL BE COPPER #10 3-CONDUCTOR, CLASS B STRANDING, TYPE TC, THWN.
  - JUNCTION BOX AND OTHER EQUIPMENT LOCATIONS SHOWN ARE APPROXIMATE. FINAL LOCATION TO BE VERIFIED BY THE ENGINEER.

**EXHIBIT M**

**HULTZ & BHU**  
engineers inc  
1111 Fawcett Ave Suite 100 Tacoma WA 98402  
Phone: (253) 383-3257 Fax: (253) 383-3283  
general@hultzbhu.com Job Number: 22-185

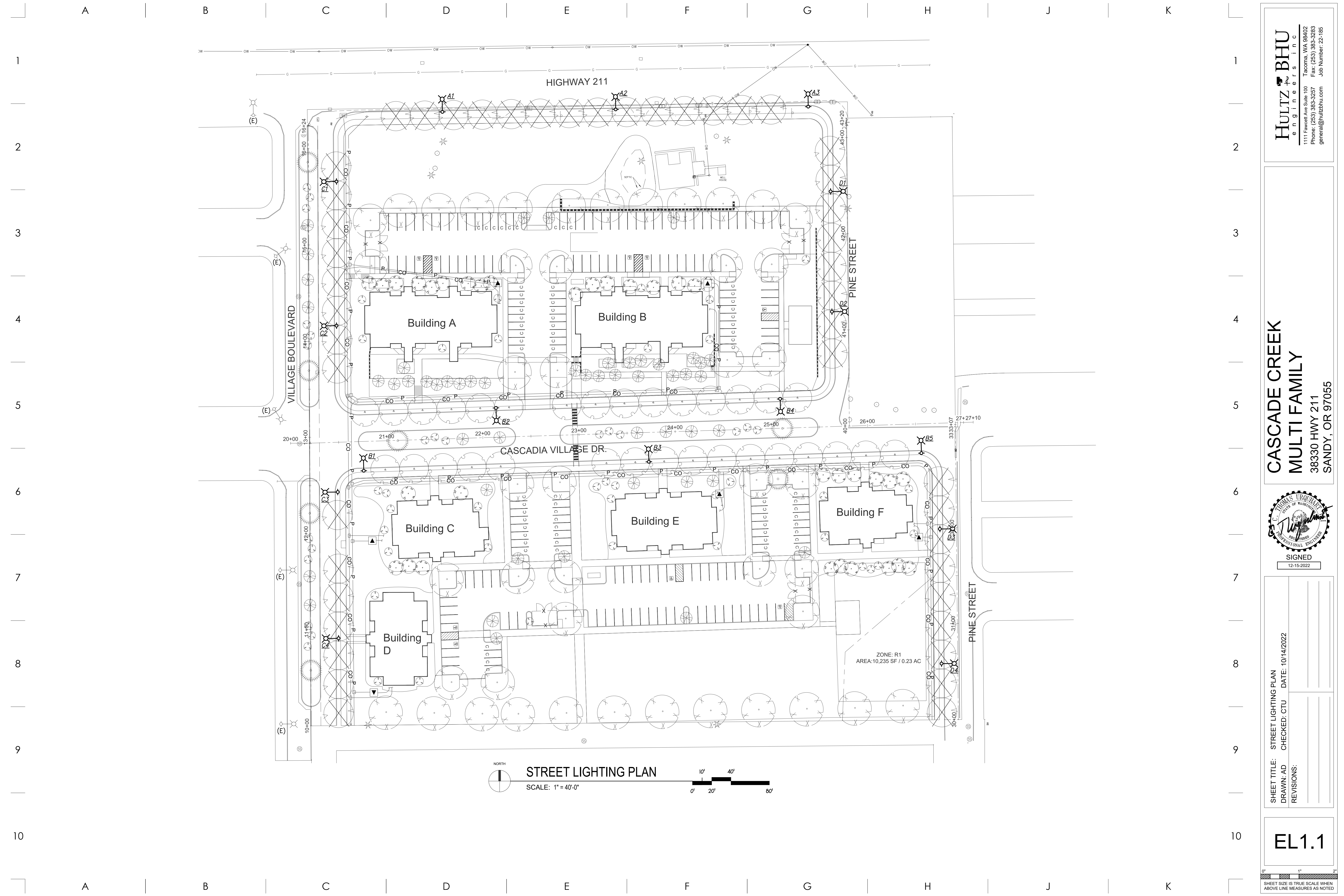
**CASCADE CREEK  
MULTI FAMILY**  
38330 HWY 211  
SANDY, OR 97055

SIGNED  
12-15-2022

SHEET TITLE: LEGEND, NOTES & SCHEDULES	CHECKED: CTU	DATE: 10/14/2022
DRAWN: AD	REVISIONS:	

**EL1.0**

0" 1" 2"  
SHEET SIZE IS TRUE SCALE WHEN ABOVE LINE MEASURES AS NOTED



**HULTZ & BHU**  
 engineers inc  
 1111 Fawcett Ave Suite 100 Tacoma WA 98402  
 Phone: (253) 383-3257 Fax: (253) 383-3283  
 general@hultzbhu.com Job Number: 22-185

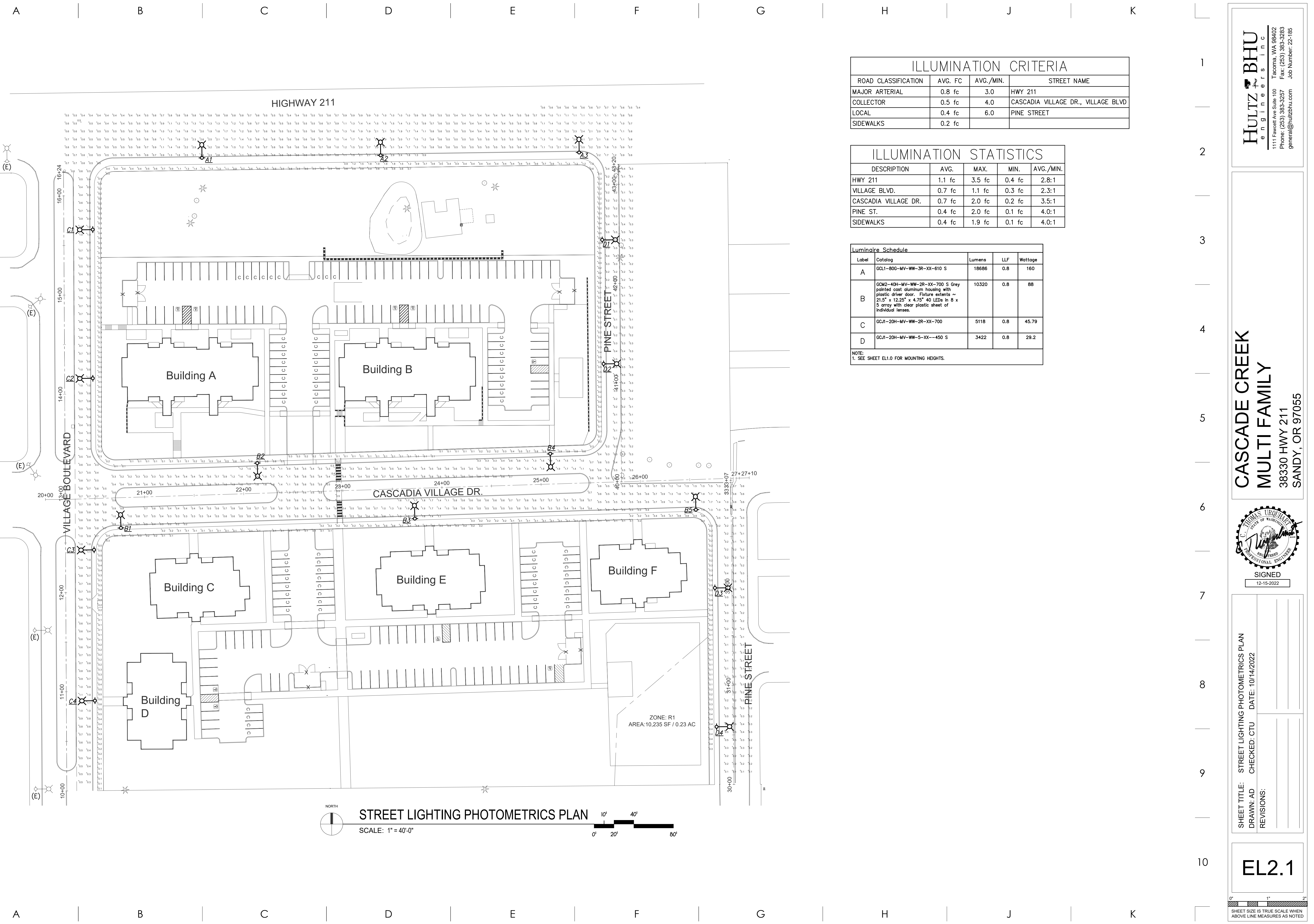
**CASCADE CREEK  
 MULTI FAMILY**  
 38330 HWY 211  
 SANDY, OR 97055

**U.S. THOMAS BROTHERS**  
 REGISTERED PROFESSIONAL ENGINEER  
 SIGNED  
 12-15-2022

SHEET TITLE: STREET LIGHTING PLAN	DATE: 10/14/2022
DRAWN: AD	CHECKED: CTU
REVISIONS:	

**EL1.1**

0' 1' 2'  
 SHEET SIZE IS TRUE SCALE WHEN ABOVE LINE MEASURES AS NOTED



ILLUMINATION CRITERIA			
ROAD CLASSIFICATION	AVG. FC	AVG./MIN.	STREET NAME
MAJOR ARTERIAL	0.8 fc	3.0	HWY 211
COLLECTOR	0.5 fc	4.0	CASCADIA VILLAGE DR., VILLAGE BLVD
LOCAL	0.4 fc	6.0	PINE STREET
SIDEWALKS	0.2 fc		

ILLUMINATION STATISTICS				
DESCRIPTION	AVG.	MAX.	MIN.	AVG./MIN.
HWY 211	1.1 fc	3.5 fc	0.4 fc	2.8:1
VILLAGE BLVD.	0.7 fc	1.1 fc	0.3 fc	2.3:1
CASCADIA VILLAGE DR.	0.7 fc	2.0 fc	0.2 fc	3.5:1
PINE ST.	0.4 fc	2.0 fc	0.1 fc	4.0:1
SIDEWALKS	0.4 fc	1.9 fc	0.1 fc	4.0:1

Luminaire Schedule				
Label	Catalog	Lumens	LLF	Wattage
A	GCL1-80G-MV-WW-3R-XX-610 S	18686	0.8	160
B	GC2-40H-MV-WW-2R-XX-700 S Grey painted cast aluminum housing with plastic driver door. Fixture extends ~ 21.5" x 12.25" x 4.75" 40 LEDs in 8 x 3 array with clear plastic sheet of individual lenses.	10320	0.8	88
C	GCJ1-20H-MV-WW-2R-XX-700	5118	0.8	45.79
D	GCJ1-20H-MV-WW-5-XX-450 S	3422	0.8	29.2

NOTE:  
1. SEE SHEET EL1.0 FOR MOUNTING HEIGHTS.

**HULTZ & BHU**  
engineers inc  
1111 Fawcett Ave Suite 100  
Tacoma, WA 98402  
Phone: (253) 383-3257  
Fax: (253) 383-3253  
general@hultzbhu.com  
Job Number: 22-185

**CASCADE CREEK  
MULTI FAMILY**  
38330 HWY 211  
SANDY, OR 97055

**U. THOMAS BROOKER**  
REGISTERED PROFESSIONAL ENGINEER  
SIGNED  
12-15-2022

SHEET TITLE: STREET LIGHTING PHOTOMETRICS PLAN  
DRAWN: AD  
CHECKED: CTU  
DATE: 10/14/2022  
REVISIONS:

**EL2.1**

0' 1' 2'  
SHEET SIZE IS TRUE SCALE WHEN ABOVE LINE MEASURES AS NOTED