

EXHIBIT L

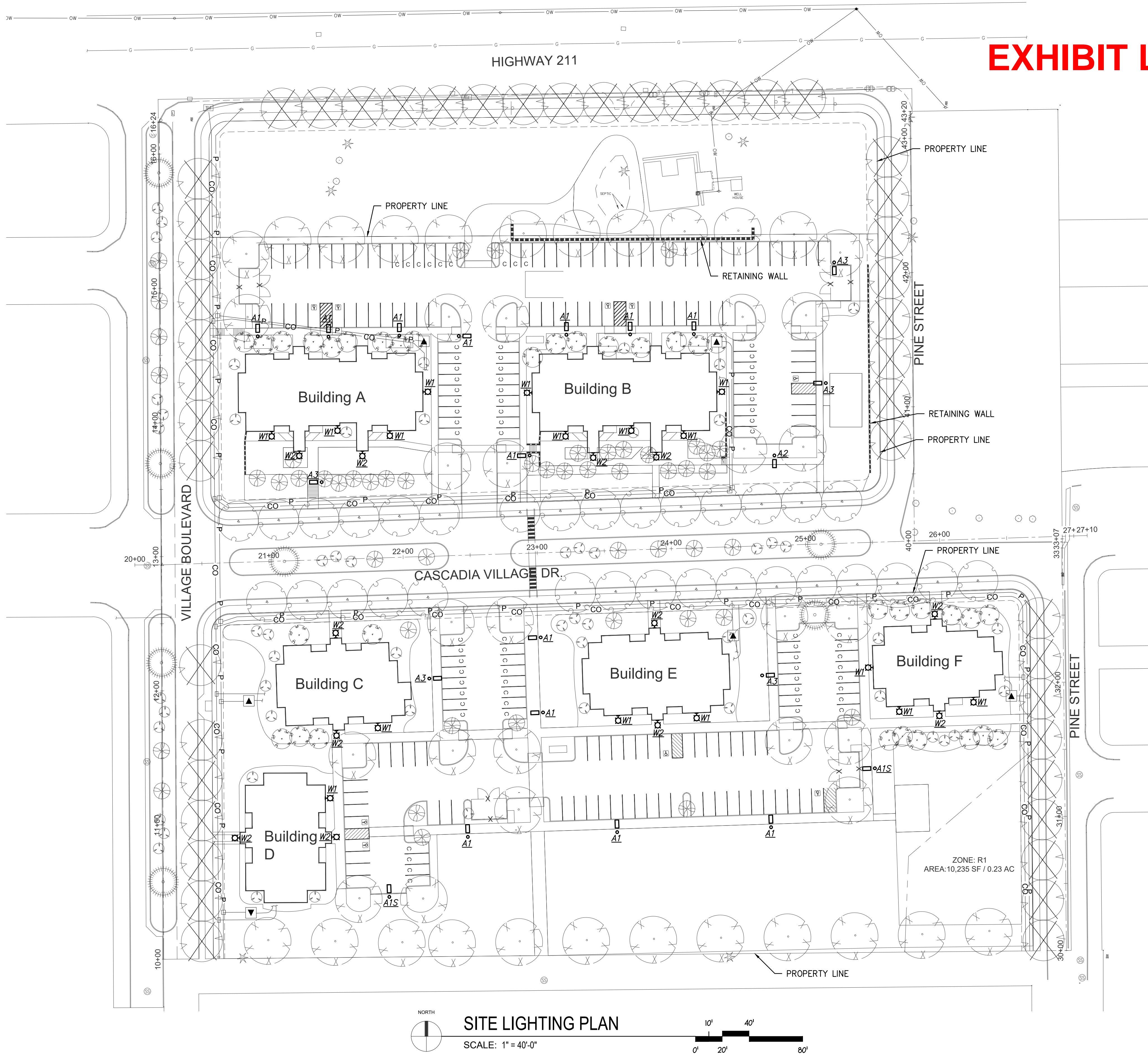
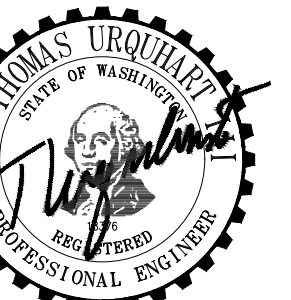


Image	Label	Manufacturer	Description	Light Loss Factor	Mt. Height	Wattage
	A1	COOPER LIGHTING SOLUTIONS - MCGRAW-EDISON (FORMERLY EATON)	GALLEON PEDESTRIAN LUMINAIRE (2) 70 CRI, 3000K, 615mA LIGHTSQUARES WITH 16 LEDS EACH AND TYPE IV FORWARD THROW OPTICS	0.85	16'	66
	A1S	COOPER LIGHTING SOLUTIONS - MCGRAW-EDISON (FORMERLY EATON)	GALLEON PEDESTRIAN LUMINAIRE (2) 70 CRI, 3000K, 615mA LIGHTSQUARES WITH 16 LEDS EACH AND TYPE IV FORWARD THROW OPTICS WITH HOUSE SIDE SHIELD	0.85	16'	66
	A2	COOPER LIGHTING SOLUTIONS - MCGRAW-EDISON (FORMERLY EATON)	GALLEON PEDESTRIAN LUMINAIRE (2) 70 CRI, 3000K, 615mA LIGHTSQUARES WITH 16 LEDS EACH AND TYPE II OPTICS Retail, Roadway, Sidewalk, Site, Street, Substation, Security, Corrosion Resistant, Vandal Resistant, Wet Location ABSOLUTE PHOTOMETRY IS BASED ON CALIBRATION FACTORS CREATED USING LAB LUMEN STANDARDS IN GONIOPHOTOMETER WITH TEST DISTANCE OF 28.75 FEET	0.85	16'	66
	A3	COOPER LIGHTING SOLUTIONS - MCGRAW-EDISON (FORMERLY EATON)	GALLEON PEDESTRIAN LUMINAIRE (2) 70 CRI, 3000K, 615mA LIGHTSQUARES WITH 16 LEDS EACH AND TYPE III OPTICS	0.85	16'	66
	W1	COOPER LIGHTING SOLUTIONS - MCGRAW-EDISON (FORMERLY EATON)	GALLEON WALL LUMINAIRE (2) 70 CRI, 3000K, 615mA LIGHTSQUARES WITH 16 LEDS EACH AND TYPE IV FORWARD THROW OPTICS	0.85	16'	66
	W2	COOPER LIGHTING SOLUTIONS - MCGRAW-EDISON (FORMERLY EATON)	IMPACT ELITE LED TRAPEZOID LUMINAIRE (1) 70 CRI, 3000K, 350MA LIGHTSQUARE WITH 16 LEDS AND TYPE IV FORWARD THROW OPTICS RETAIL, ROADWAY, SIDEWALK, SITE, STREET, SUBSTATION, SECURITY, CORROSION RESISTANT, VANDAL RESISTANT, WET LOCATION ABSOLUTE PHOTOMETRY IS BASED ON CALIBRATION FACTORS CREATED USING LAB LUMEN STANDARDS IN GONIOPHOTOMETER WITH TEST DISTANCE OF 28.75 FEET	0.85	8'	20.1

HULTZ & BHU
engineers inc
1111 Fawcett Ave Suite 100
Tacoma, WA 98402
Phone: (253) 383-3257
Fax: (253) 383-3257
general@hultzbhu.com
Job Number: 22-185

**CASCADE CREEK
MULTI FAMILY**
38330 HWY 211
SANDY, OR 97055

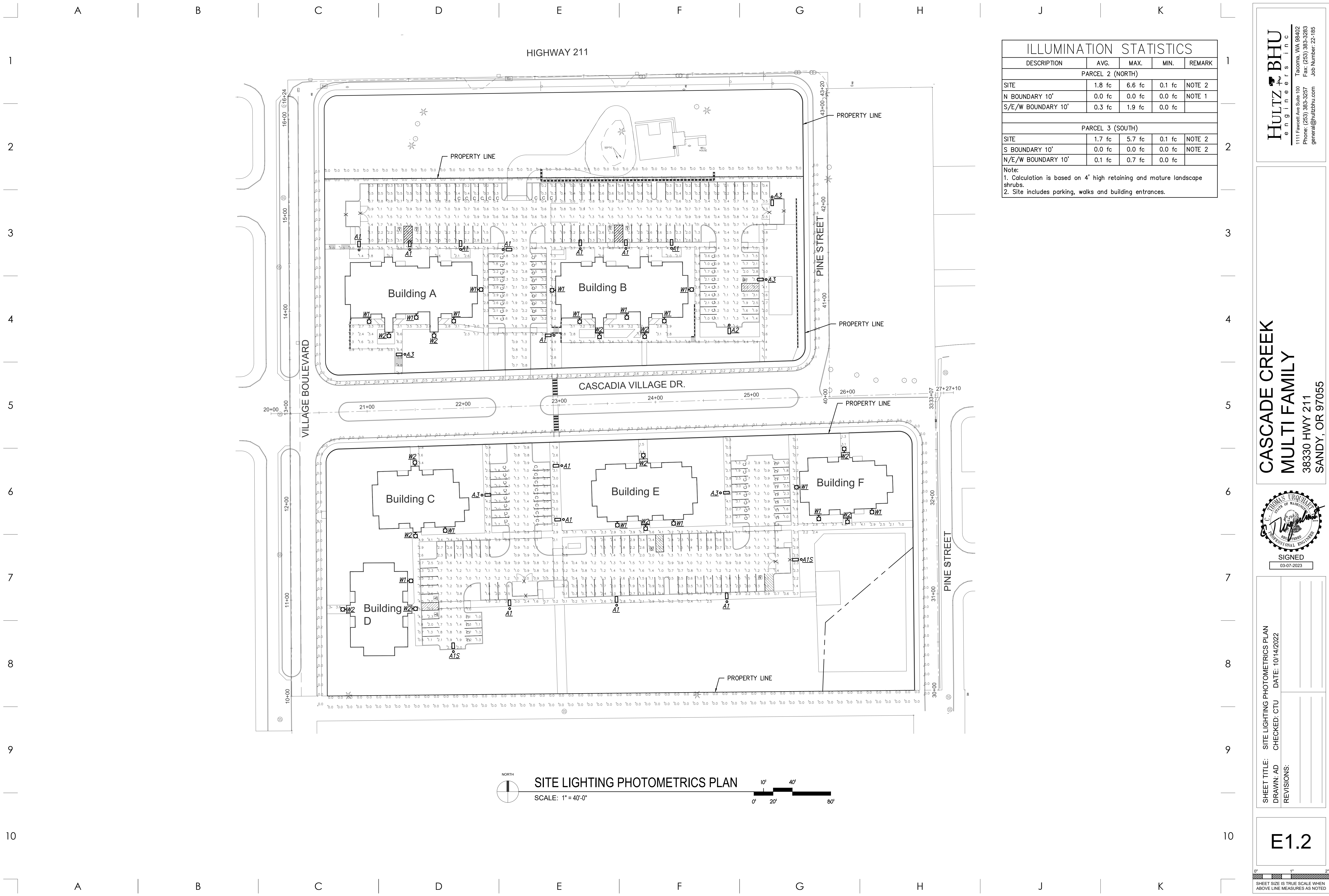


SIGNED
12-15-2022

SHEET TITLE: SITE LIGHTING PLAN
DRAWN: AD
CHECKED: CTU
REVISIONS:

E1.1

0" 1" 2"
SHEET SIZE IS TRUE SCALE WHEN ABOVE LINE MEASURES AS NOTED



ILLUMINATION STATISTICS				
DESCRIPTION	AVG.	MAX.	MIN.	REMARK
PARCEL 2 (NORTH)				
SITE	1.8 fc	6.6 fc	0.1 fc	NOTE 2
N BOUNDARY 10'	0.0 fc	0.0 fc	0.0 fc	NOTE 1
S/E/W BOUNDARY 10'	0.3 fc	1.9 fc	0.0 fc	
PARCEL 3 (SOUTH)				
SITE	1.7 fc	5.7 fc	0.1 fc	NOTE 2
S BOUNDARY 10'	0.0 fc	0.0 fc	0.0 fc	NOTE 2
N/E/W BOUNDARY 10'	0.1 fc	0.7 fc	0.0 fc	

Note:
 1. Calculation is based on 4' high retaining and mature landscape shrubs.
 2. Site includes parking, walks and building entrances.

SITE LIGHTING PHOTOMETRICS PLAN
 SCALE: 1" = 40'-0"

HULTZ & BHU
 engineers inc
 1111 Fawcett Ave Suite 100 Tacoma WA 98402
 Phone: (253) 383-3257 Fax: (253) 383-3283
 general@hultzbhu.com Job Number: 22-185

**CASCADE CREEK
 MULTI FAMILY**
 38330 HWY 211
 SANDY, OR 97055

SIGNED
 03-07-2023

SHEET TITLE: SITE LIGHTING PHOTOMETRICS PLAN DRAWN: AD CHECKED: CTU REVISIONS:	DATE: 10/14/2022
---	------------------

E1.2

SHEET SIZE IS TRUE SCALE WHEN ABOVE LINE MEASURES AS NOTED