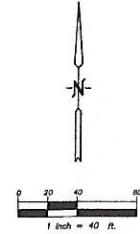


EXHIBIT J

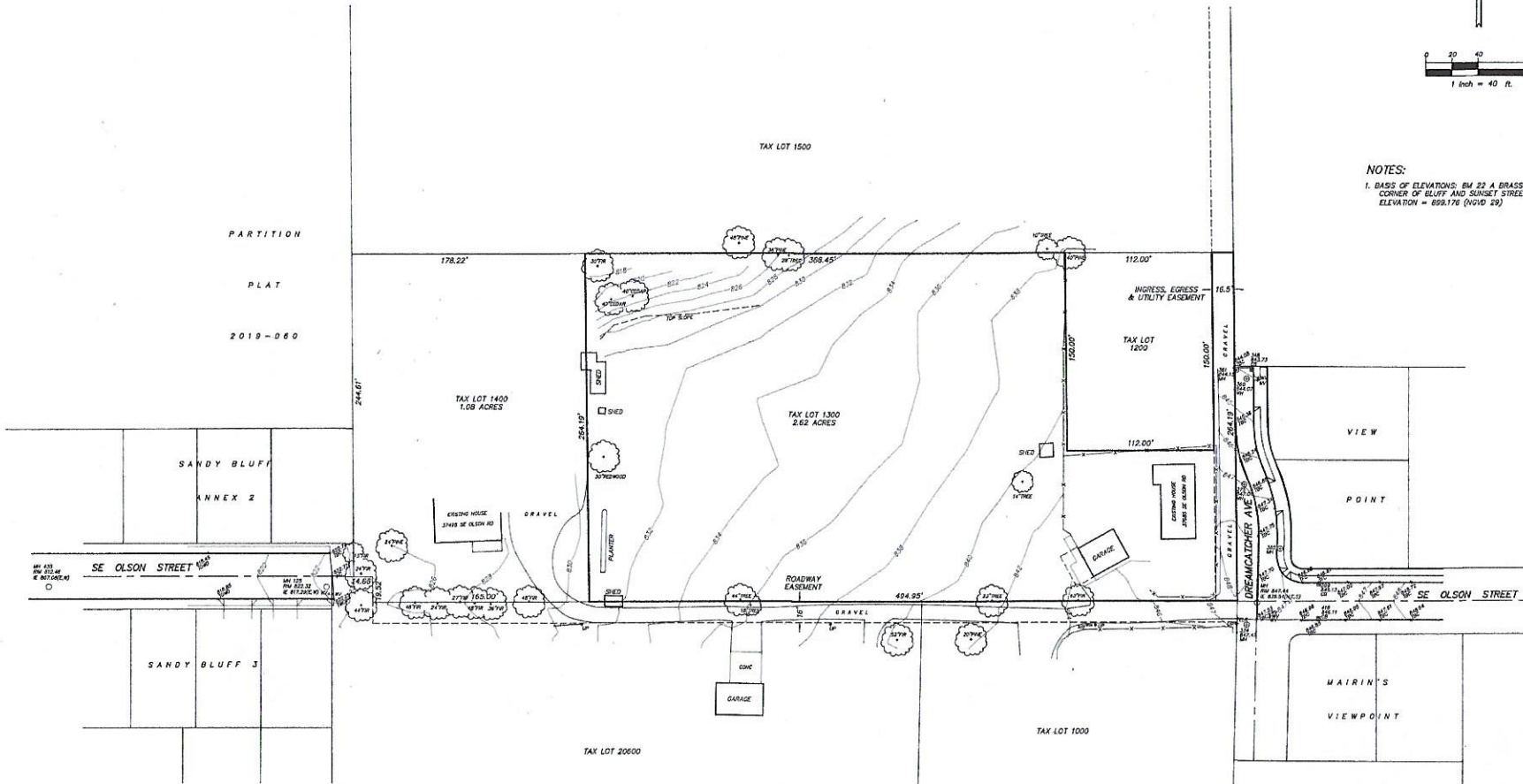
TOPOGRAPHIC SURVEY

TAX LOT 1300 MAP 24E11A0  
IN THE NE 1/4 SECTION 11, T2S, R4E, W4M  
CLACKAMAS COUNTY, OREGON

APRIL, 2021



NOTES:  
1. BASIS OF ELEVATIONS: BM 22 A BRASS DISK AT THE SW  
CORNER OF BLUFF AND SUNSET STREET.  
ELEVATION = 699.176 (NGVD 29)



REGISTERED  
PROFESSIONAL  
LAND SURVEYOR  
*Kenneth D. Griffin*  
OREGON  
JULY 28, 1985  
KENNETH D. GRIFFIN  
2147  
RENEWED 4.5.21  
0773 SAUL TOPO

GRIFFIN LAND SURVEYING INC.  
6102 SW ALDRAY BLVD. #409  
BEAVERTON, OR 97008  
(503) 261-3116