

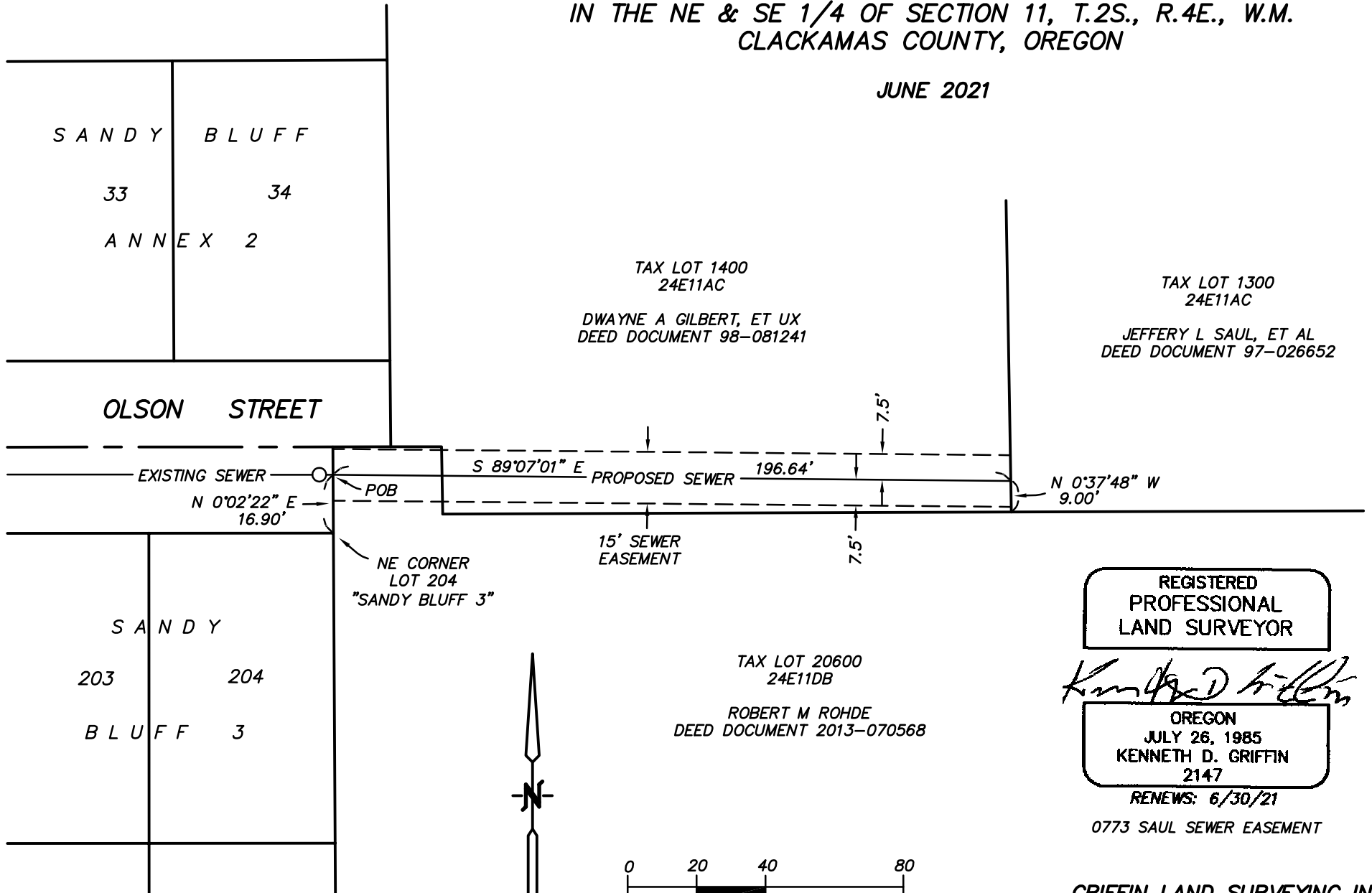
EXHIBIT 'B'

EXHIBIT I

# SEWER EASEMENT

WITHIN TAX LOTS 24E11AC 1400 & 24E11DB 20600  
IN THE NE & SE 1/4 OF SECTION 11, T.2S., R.4E., W.M.  
CLACKAMAS COUNTY, OREGON

JUNE 2021



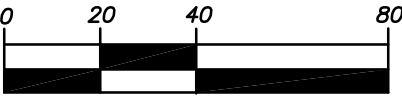
REGISTERED  
PROFESSIONAL  
LAND SURVEYOR

OREGON  
JULY 26, 1985  
KENNETH D. GRIFFIN  
2147

RENEWS: 6/30/21

0773 SAUL SEWER EASEMENT

TAX LOT 20600  
24E11DB  
ROBERT M ROHDE  
DEED DOCUMENT 2013-070568



1 inch = 40 ft.

**GRIFFIN LAND SURVEYING INC.**  
6107 SW MURRAY BLVD. #409  
BEAVERTON, OR. 97008  
PHONE: (503)201-3116