

EXHIBIT E

PARTITION PLAT NO. 2022-

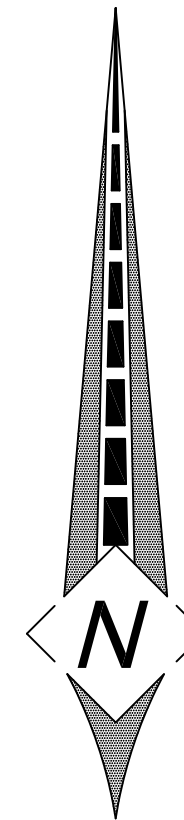
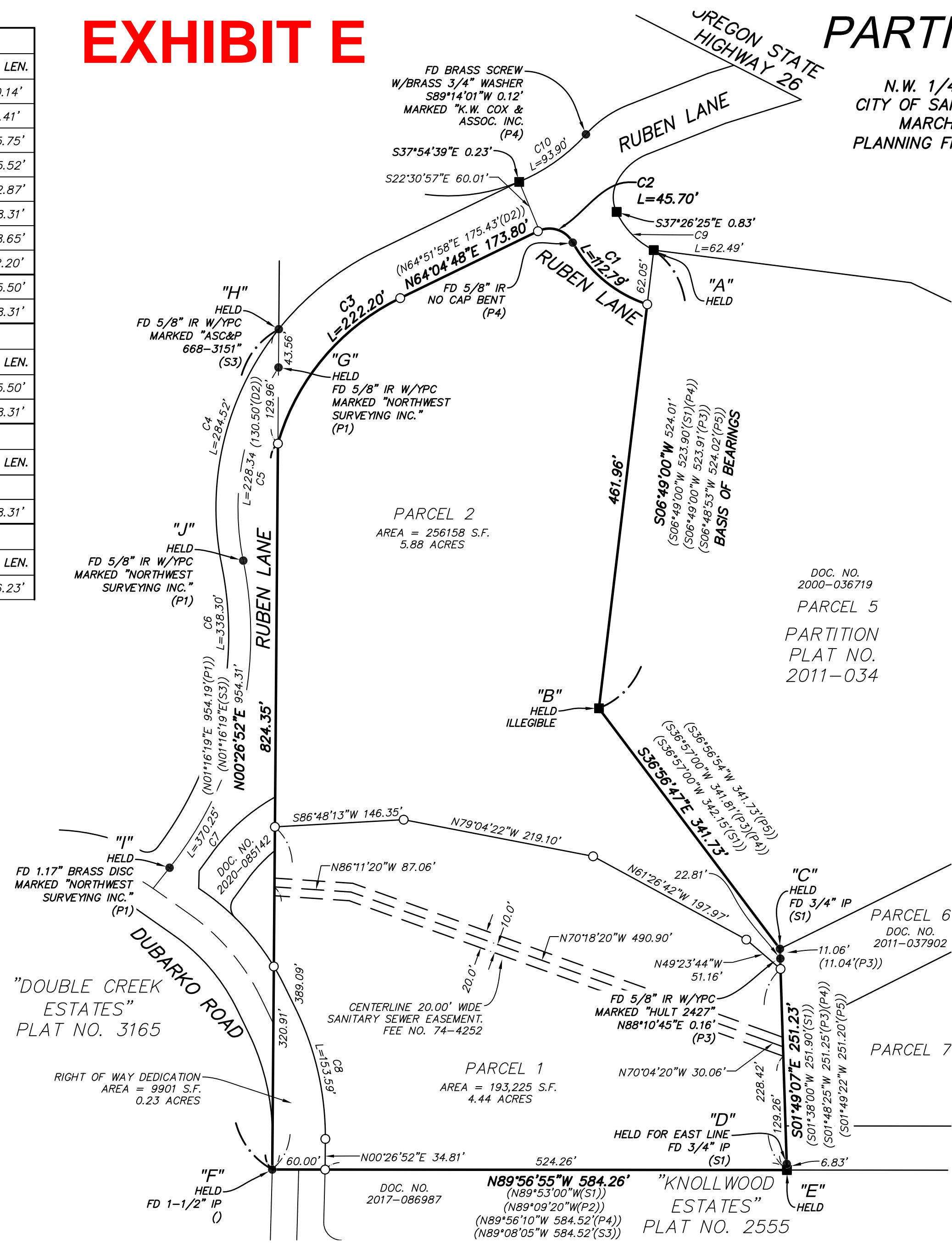
LOCATED IN THE
N.W. 1/4 SECTION 14, T.2S., R.4E., W.M.
CITY OF SANDY, CLACKAMAS COUNTY, OREGON
MARCH 22, 2022 SCALE 1"=100'
PLANNING FILE NO. 19-038 DR/FSH/VAR/TREE
SHEET 1 OF 2

CURVE DATA TABLE					
CURVE#	LENGTH	RADIUS	DELTA	CH. BEARING	CH. LEN.
C1	112.79'	149.62'	43°11'34"	S50°14'27"E	110.14'
C2	45.70'	30.00'	87°16'32"	S72°16'56"E	41.41'
C3	222.20'	265.00'	48°02'32"	N40°03'32"E	215.75'
C4	284.52'	325.00'	50°09'34"	S13°36'42"W	275.52'
C5	228.34'	300.00'	43°36'33"	S10°20'11"W	222.87'
C6	338.30'	400.00'	48°27'30"	N12°45'40"E	328.31'
C7	370.25'	425.00'	49°54'52"	N13°29'21"E	358.65'
C8	153.59'	330.00'	26°39'58"	N12°53'07"W	152.20'
C9	284.50'	325.00'	50°09'21"	S14°25'39"W	275.50'
C10	338.30'	400.00'	48°27'31"	N13°34'44"E	328.31'

RECORD CURVE DATA TABLE (P1)					
CURVE#	LENGTH	RADIUS	DELTA	CH. BEARING	CH. LEN.
C4 DONE	284.50'	325.00'	50°09'21"	S14°25'39"W	275.50'
C6 DONE	338.30'	400.00'	48°27'31"	N13°34'44"E	328.31'

RECORD CURVE DATA TABLE (D1)					
CURVE#	LENGTH	RADIUS	DELTA	CH. BEARING	CH. LEN.
C4		325.00'			
C6	338.30'	400.00'	48°27'30"	N13°35'22"E	328.31'

RECORD CURVE DATA TABLE (D2)					
CURVE#	LENGTH	RADIUS	DELTA	CH. BEARING	CH. LEN.
C3	222.72'	265.00'	48°09'19"	N40°47'19"E	216.23'



LEGEND:

- SET 5/8" x 30" IRON ROD W/ RED PLASTIC CAP MARKED "CENTERLINE CONCEPTS" ON _____, 2022
- FOUND MONUMENT AS NOTED
- FOUND 5/8" IRON ROD W/ YELLOW PLASTIC CAP MARKED "K.W. COX & ASSOC. INC." FROM PARTITION PLAT NO. 1991-152
- () = RECORD DISTANCES & BEARINGS
- IR = IRON ROD IP = IRON PIPE
- FD = FOUND W/ = WITH
- YPC = YELLOW PLASTIC CAP
- R/W = RIGHT OF WAY
- S.F. = SQUARE FEET
- CCPR = CLACKAMAS COUNTY PLAT RECORDS
- DOC. NO. = DEED DOCUMENT NUMBER, CLACKAMAS COUNTY DEED RECORDS
- SN = SURVEY NUMBER, CLACKAMAS COUNTY SURVEY RECORDS
- S1 = SN 1013
- S2 = SN 571
- S3 = SN 2003-314
- P1 = PARTITION PLAT NO. 2007-163
- P2 = "KNOLLWOOD ESTATES" CCPR
- P3 = PARTITION PLAT NO. 2000-037 CCPR
- P4 = PARTITION PLAT NO. 1991-152 CCPR
- P5 = PARTITION PLAT NO. 2011-034 CCPR
- D1 = 2003-043345
- D2 = 2005-086712

SIGNED ON:

REGISTERED
PROFESSIONAL
LAND SURVEYOR

OREGON
JULY 13, 2004
TOBY G. BOLDEN
60377LS

RENEWS: DECEMBER 31, 2023



CENTERLINE CONCEPTS
LAND SURVEYING, INC.

19376 MOLALLA AVE., SUITE 120
OREGON CITY, OREGON 97045
PHONE 503.650.0188 FAX 503.650.0189

PLOTTED: M:\PROJECTS\DUBARKO DEV-DUBARKO RD-37101\DWG\PART-C3D.dwg