

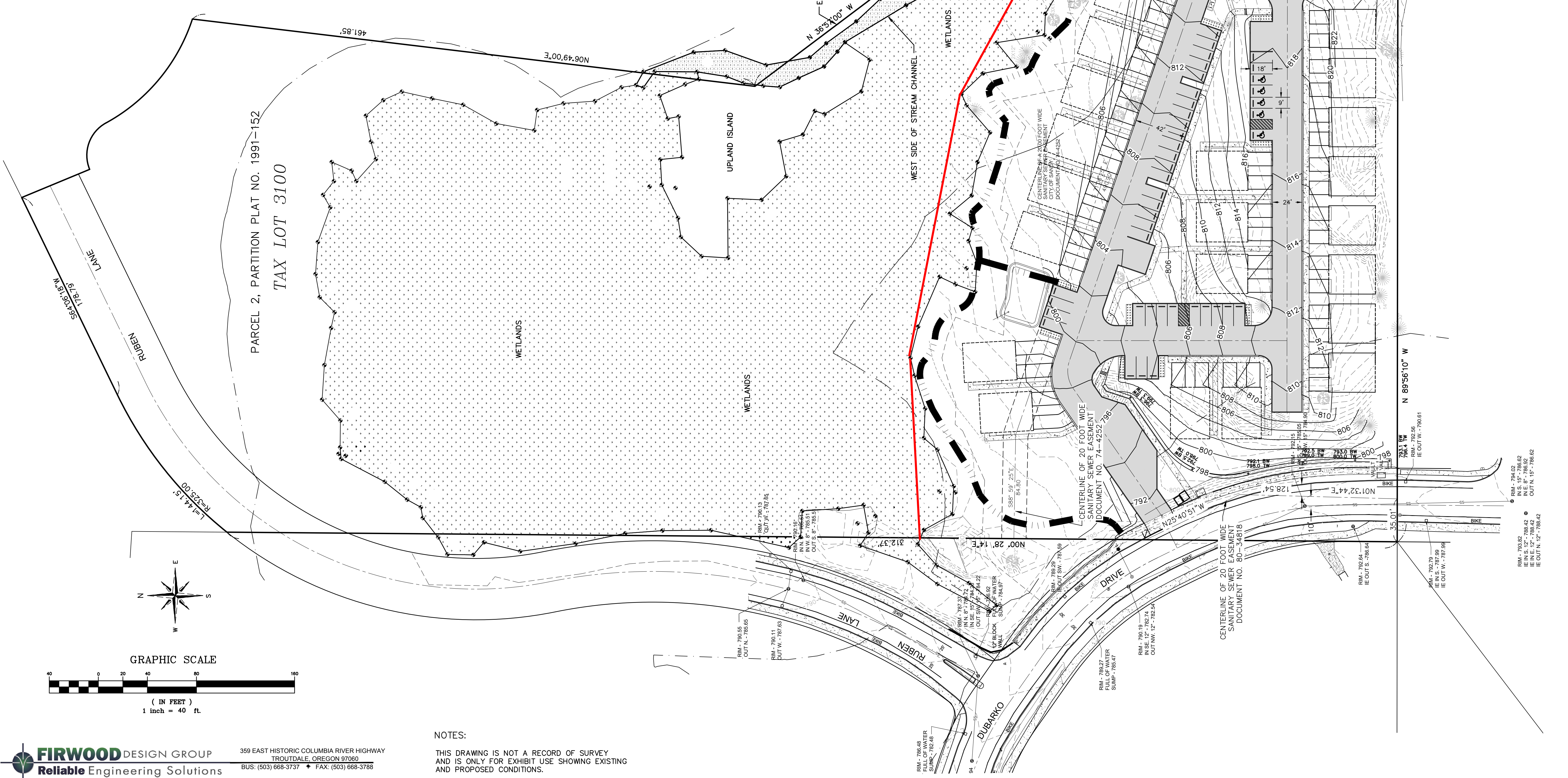
# TOPOGRAPHIC SURVEY- PROPOSED OVERLAY

A PORTION OF PARCEL 2, PARTITION PLAT NO. 1991-152  
 LOCATED IN THE NORTHWEST 1/4 OF SECTION 14  
 TOWNSHIP 2 SOUTH, RANGE 4 EAST, WILLAMETTE MERIDIAN,  
 COUNTY OF CLACKAMAS, STATE OF OREGON  
 SCALE: 1" = 40' DATE: DECEMBER 3, 2020

# EXHIBIT D

- |  |   |   |  |   |  |
|--|---|---|--|---|--|
| <ul style="list-style-type: none"> <li>● SANITARY SEWER MANHOLE</li> <li>⊕ SEWER CLEANOUT</li> <li>● STORM SEWER MANHOLE</li> <li>□ CATCH BASIN</li> </ul> | <ul style="list-style-type: none"> <li>⊙ WATER VALVE</li> <li>⊕ WATER METER</li> <li>● FIRE HYDRANT</li> <li>⊙ COMMUNICATION RISER</li> </ul> | <ul style="list-style-type: none"> <li>⊠ ELECTRIC BOX</li> <li>⊕ UTILITY POLE</li> <li>⊠ SIGN</li> <li>⊠ GAS VALVE</li> </ul> | <ul style="list-style-type: none"> <li>▨ GRAVEL</li> <li>▨ CONCRETE</li> <li>● DECIDUOUS TREE</li> <li>● EVERGREEN TREE</li> </ul> | <ul style="list-style-type: none"> <li>▬ PROPOSED LANDSCAPING</li> <li>▬ PROPOSED ASPHALT SURFACE</li> <li>▬ PROPOSED CONCRETE SURFACE</li> <li>▬ PROPOSED TRAIL</li> </ul> | <ul style="list-style-type: none"> <li>▬ SEWER LINE</li> <li>▬ STORM LINE</li> <li>▬ STRIPE</li> <li>▬ FENCE</li> <li>▬ RIGHT OF WAY</li> <li>▬ BOUNDARY LINE</li> <li>▬ WALL</li> <li>▬ FLOOD AND SLOPE HAZARD</li> </ul> |
|--|---|---|--|---|--|

## LEGEND



NOTES:  
 THIS DRAWING IS NOT A RECORD OF SURVEY  
 AND IS ONLY FOR EXHIBIT USE SHOWING  
 AND PROPOSED CONDITIONS.