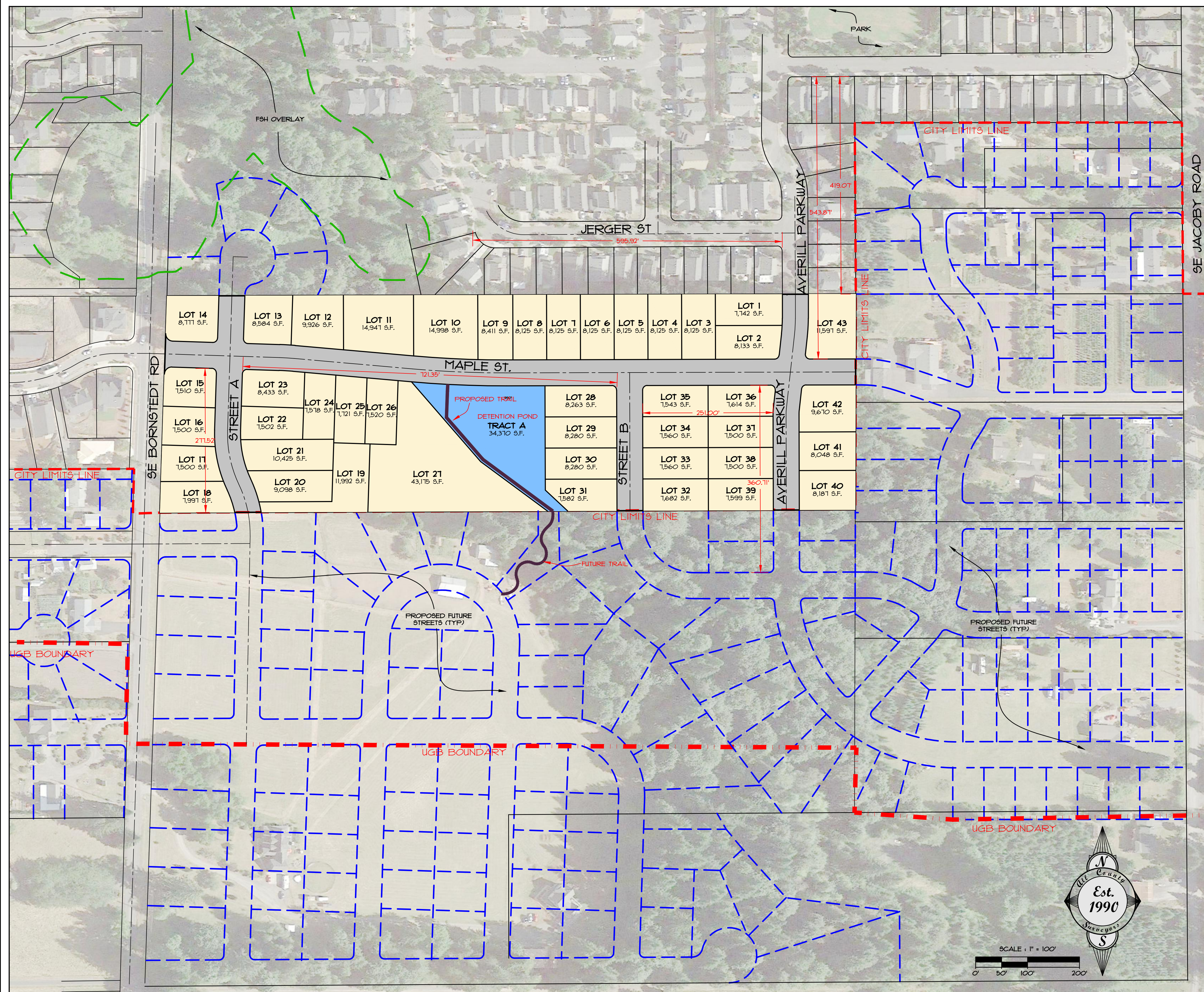


# THE BORNSTEDT VIEWS

## A PROPOSED 43 LOT SUBDIVISION, APRIL 2022

# Exhibit C



**SITE LOCATION AND FUTURE STREET PLAN**  
SCALE: 1" = 100'



### SHEET INDEX

- C1 COVER SHEET AND FUTURE STREET PLAN
- C2 TENTATIVE PLAT MAP
- C3 TOPOGRAPHIC SURVEY
- C4 TREE INVENTORY LIST 1
- C5 TREE INVENTORY LIST 2
- C6 TREE INVENTORY LIST 3
- C7 TREE RETENTION AND PROTECTION PLAN
- C8 STREET AND UTILITY PLAN
- C9 GRADING AND EROSION CONTROL PLAN
- C10 ON-STREET PARKING PLAN

### DENSITY CALCULATIONS:

AREA INFORMATION for Total Project		
Total Site Area =>	554,897 SF	12.739 Acres
Public ROW =>	115,845 SF	2.659 Acres
Public Tracts (detention pond) =>	34,370 SF	0.789 Acres
Total Lot Area =>	404,683 SF	9.290 Acres

Density Calculations (Based on SFR Zoning)		
Minimum Density =>	3 units/acre	
Max density =>	5.8 units/acre	
Minimum Required Units =>	28 units	
MAXIMUM DENSITY ALLOWED ==>>	54 units	

### PROPOSAL:

THE PROPOSED SUBDIVISION WILL CREATE A TOTAL OF 43 NEW RESIDENTIAL LOTS.

### SITE INFORMATION:

PROPERTY OWNER:  
WILLIAM BLOOM  
ADDRESS: 19618 SE BORNSTEDT ROAD  
TAX LOT 100, MAP 25 4E 24  
AREA: 12.139 ACRES (554,897 SF)  
ZONING: SFR

### PROJECT TEAM:

#### CLIENT

EVEN BETTER HOMES, INC.  
ATTN: MAC EVEN  
PO BOX 2021  
GRESHAM, OR 97030  
PHONE: (503) 348-5600

#### ENGINEER/SURVEYOR

ALL COUNTY SURVEYORS & PLANNERS, INC.  
ATTN: RAY MOORE, PE, PLS  
TYLER HENDERSON, EIT  
PO BOX 955  
SANDY, OR 97055  
PHONE: (503) 668-3151

#### TRAFFIC ENGINEER

ARD ENGINEERING  
ATTN: MIKE ARD, PE  
21310 SW LANGER FARMS PARKW, SU 142,  
SHERWOOD, OR 97140  
PHONE: (503) 862-6960

#### PLANNER:

TRACY BROWN PLANNING CONSULTANTS, LLC  
ATTN: TRACY BROWN  
17075 FIR DRIVE  
SANDY, OR 97055  
PHONE: (503) 781-0453

#### ARBORIST

TERAGAN 4 ASSOCIATES, INC.  
ATTN: TODD PRAGER  
ASCA REGISTERED CONSULTING ARB #591  
3145 WESTVIEW CIRCLE  
LAKE OSWEGO, OR 97034  
PHONE: (971) 295-0598

#### GEOTECHNICAL ENGINEER

REDMOND GEOTECHNICAL SERVICES  
ATTN: DAN REDMOND, GE  
PO BOX 20541  
PORTLAND, OR 97294  
PHONE: (503) 285-0598

BY: _____	REVISION: _____	SHEET: <b>C1</b>
DATE: _____	NO. _____	OF <b>10</b>
DESIGNED: RLM	DRAWN: RLM	CHECKED: DLH
APPROVED: _____	DATE: 12/31/2022	RENEWAL DATE: _____

SCALE: VERT. 1" = 100'  
HORIZ. 1" = 100'

DATE: 4-25-22  
FILE: 19-268 - Planning.dwg

SECTION	TWP.	RANGE
24	2S	4E

PROJECT: **THE BORNSTEDT VIEWS**  
COVER SHEET AND FUTURE STREET PLAN

LOCATION: **19618 BORNSTEDT ROAD, SANDY, OR**

DATE OF PLOT: 4/25/22

CLIENT: EVEN BETTER HOMES, INC.  
MAC EVEN  
PO BOX 2021  
GRESHAM, OR 97030  
PHONE: (503) 348-5602  
EMAIL: macc@evenbetterhomes.com

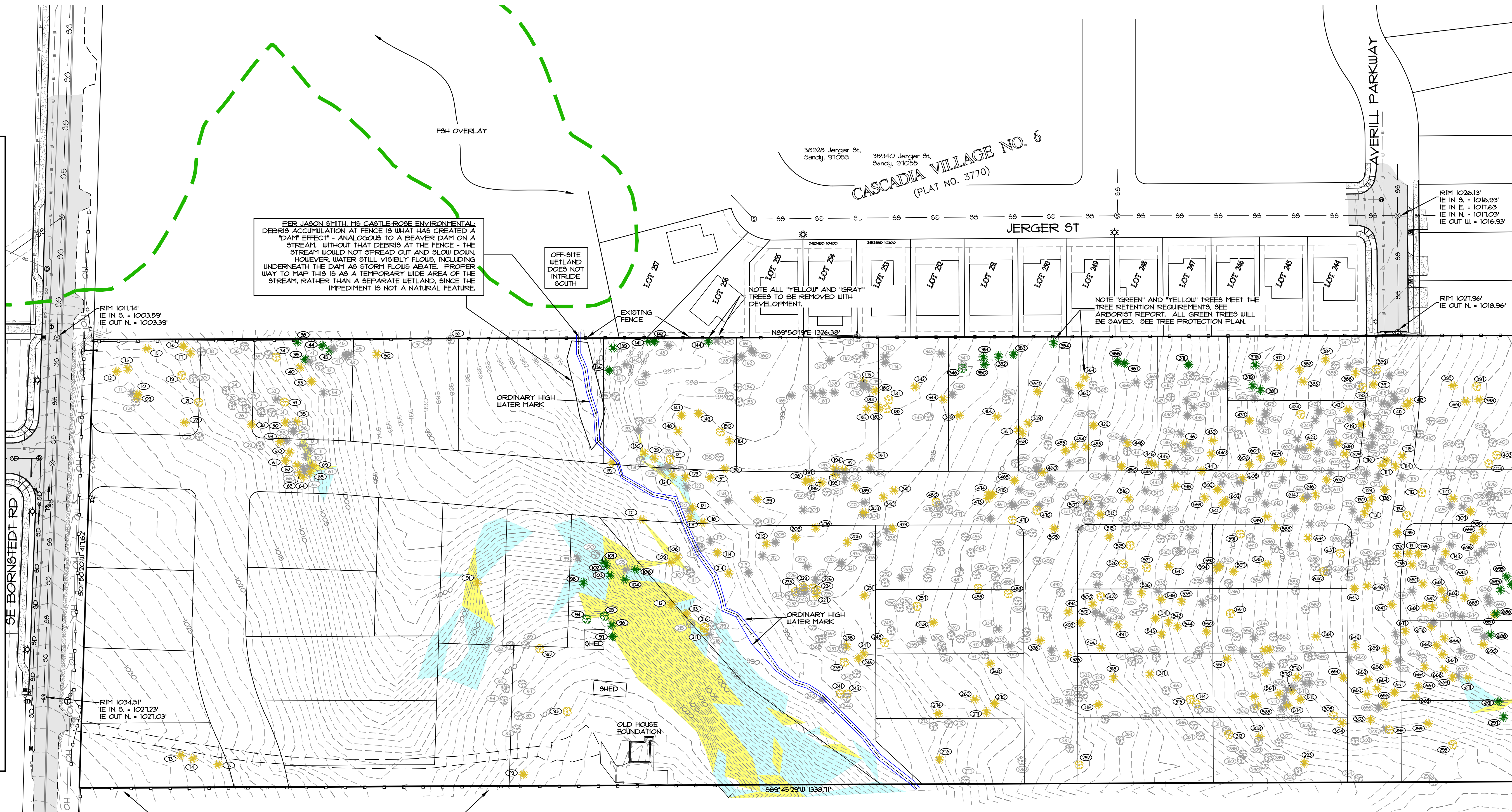
Surveyors & Planners, Inc.  
Surveying, Planning and  
Civil Engineering  
P.O. Box 955, Sandy, OR 97055  
Phone: (503) 668-3151  
Fax: (503) 668-4720





**LEGEND**

- (—) (E) PROPERTY LINE
- (---) (E) LOT LINE
- (---) (E) CL. RIGHT OF WAY
- (---) (E) EASEMENT LINE
- (---) (E) 5' GROUND CONTOUR
- (---) (E) 1' GROUND CONTOUR
- (---) (E) BUILDING WALL
- (---) (E) AC PAVEMENT
- (---) (E) SIDEWALK/CONCRETE
- (---) (E) GRAVEL
- (---) (E) CURB & GUTTER
- (---) (E) FENCE
- (---) (E) WATER LINE
- (---) (E) 6" WATER LINE
- (---) (E) 8" WATER LINE
- (---) (E) 12" WATER LINE
- (---) (E) STORM LINE
- (---) (E) SANITARY LINE
- (---) (E) GAS LINE
- (---) (E) TELEPHONE LINE, CAT
- (---) (E) OVERHEAD POWER LI
- (●) FOUND SURVEY MONUMENT
- (●) (E) STORM MANHOLE
- (●) (E) CATCH BASIN
- (●) (E) WATER METER
- (●) (E) WATER VALVE
- (●) (E) MANHOLE
- (●) (E) GAS VALVE
- (●) (E) LIGHT POLE
- (●) (E) UTILITY POLE
- (●) (E) POLE W/ GUY WIRE
- (●) (E) SIGN
- (●) (E) DECIDUOUS TREE
- (●) (E) CONIFEROUS TREE
- (●) (E) SANITARY LINE
- (●) (E) SANITARY MANHOLE
- (●) (E) STORM LINE
- (●) (E) STORM MANHOLE
- (●) (E) CATCH BASIN
- (●) (E) WATER LINE
- (●) (E) WATER METER
- (●) (E) WATER VALVE
- (●) (E) FIRE HYDRANT
- (●) (E) STREET LIGHT



PER JASON SMITH, MS CASTLE-ROSE ENVIRONMENTAL. DEBRIS ACCUMULATION AT FENCE IS WHAT HAS CREATED A "DAM EFFECT" - ANALOGOUS TO A BEAVER DAM ON A STREAM. WITHOUT THAT DEBRIS AT THE FENCE - THE STREAM WOULD NOT SPREAD OUT AND SLOW DOWN. HOWEVER, WATER STILL VISIBLY FLOWS, INCLUDING UNDERNEATH THE DAM AS STORM FLOWS ABATE. PROPER WAY TO MAP THIS IS AS A TEMPORARY WIDE AREA OF THE STREAM, RATHER THAN A SEPARATE WETLAND, SINCE THE IMPEDIMENT IS NOT A NATURAL FEATURE.

OFF-SITE WETLAND DOES NOT INTRUDE SOUTH

NOTE ALL "YELLOW" AND "GRAY" TREES TO BE REMOVED WITH DEVELOPMENT.

NOTE "GREEN" AND "YELLOW" TREES MEET THE TREE RETENTION REQUIREMENTS, SEE ARBORIST REPORT. ALL GREEN TREES WILL BE SAVED. SEE TREE PROTECTION PLAN.

NOTE THE SUBJECT SITE IS PARCEL 3 PARTITION PLAT 2018-045. MONUMENTS WERE FOUND AND HELD AND THE MEASURED DISTANCE MATCH CLOSELY TO THE PLAT. SEE PP 20018-045. THIS PLAT HELD THE CENTERLINE OF THE A3 TRAVELED WAY OF SE BORNSTEDT ROAD TO DETERMINE THE RIGHT-OF-WAY. SEE RECORD OF SURVEY 9N 2022-026 RECORDED 1-20-22, TO BE USED AS THE BOUNDARY FOR THIS PLAT

PARCEL 4,  
PARTITION PLAT 2018-045

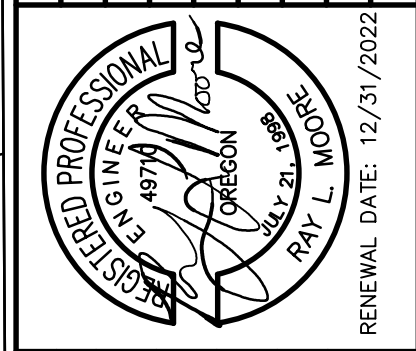
**TOPOGRAPHIC SURVEY**  
SCALE: 1" = 50'

**SLOPE ANALYSIS LEGEND**

- (White box) SLOPES OF 0-24.99%
- (Light blue box) SLOPES OF 25-34.99%
- (Yellow box) SLOPES OF 35% AND GREATER

BENCHMARK ELEVATIONS ARE BASED ON CITY OF SANDY ELEVATION DATUM

BY	REVISION	SHEET
DATE	NO.	3
DATE	NO.	10
DESIGNED:	RLM	OF
DRAWN:	RLM	10
CHECKED:	DLH	
APPROVED:	RLM	



SCALE	VERT. N/A	HORIZ. 1" = 50'
DATE:	4-25-22	
FILE:	19-268 - Planning.dwg	
LEGAL	TWP.	RANGE
SECTION	24	4E

**THE BORNSTEDT VIEWS**  
TOPOGRAPHIC SURVEY  
19618 BORNSTEDT ROAD, SANDY, OR

**Surveyors & Planners, Inc.**  
Surveying, Planning and  
Civil Engineering  
P.O. Box 925, Sandy, OR 97055  
Phone: (503) 348-5602  
Fax: (503) 668-4720

CLIENT:  
EVEN BETTER HOMES, INC.  
MAC EVEN  
PO BOX 2021  
GRESHAM, OR 97030  
PHONE: (503) 348-5602  
EMAIL: mocc@evenbetterhomes.com

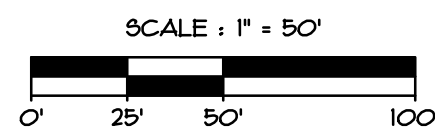
TREE TO BE SAVED OR REMOVED	TREE NO.	COMMON NAME	SCIENTIFIC NAME	DBH	C-RAD	CONDITION	STRUCTURE	RETENTION	OPTION	COMMENTS
BITTER CHERRY	1	FRUNIS EMBARGINATA	FRUNIS EMBARGINATA	13	13	GOOD	FAIR	NO	ONE SIDED	
BITTER CHERRY	2	FRUNIS EMBARGINATA	FRUNIS EMBARGINATA	11	15	GOOD	FAIR	YES	ONE SIDED	
BITTER CHERRY	3	FRUNIS EMBARGINATA	FRUNIS EMBARGINATA	9	14	GOOD	FAIR	NO	ONE SIDED	
DOUGLAS-FIR	4	PSEUDOTSUGA MENZIESII	PSEUDOTSUGA MENZIESII	19	15	GOOD	FAIR	YES	ONE SIDED, CODOMINANT AT 4' AND 6' WITH INCLUDED BARK	
BITTER CHERRY	5	FRUNIS EMBARGINATA	FRUNIS EMBARGINATA	1	14	GOOD	FAIR	NO	ONE SIDED	
BITTER CHERRY	6	FRUNIS EMBARGINATA	FRUNIS EMBARGINATA	6	12	GOOD	FAIR	NO	ONE SIDED	
BITTER CHERRY	7	FRUNIS EMBARGINATA	FRUNIS EMBARGINATA	7	13	GOOD	FAIR	NO	ONE SIDED	
BIGLEAF MAPLE	8	ACER MACROPHYLLUM	ACER MACROPHYLLUM	35	20	GOOD	FAIR	NO	ONE SIDED, OVERTOPPED BY ADJACENT TREES	
DOUGLAS-FIR	9	PSEUDOTSUGA MENZIESII	PSEUDOTSUGA MENZIESII	35	20	GOOD	FAIR	YES	ONE SIDED	
DOUGLAS-FIR	10	PSEUDOTSUGA MENZIESII	PSEUDOTSUGA MENZIESII	18	12	GOOD	FAIR	YES	ONE SIDED	
DOUGLAS-FIR	11	PSEUDOTSUGA MENZIESII	PSEUDOTSUGA MENZIESII	10	10	GOOD	FAIR	NO	OVERTOPPED BY ADJACENT TREES, MODERATELY SUPPRESSED	
DOUGLAS-FIR	12	PSEUDOTSUGA MENZIESII	PSEUDOTSUGA MENZIESII	30	20	GOOD	FAIR	YES	ONE SIDED	
DOUGLAS-FIR	13	PSEUDOTSUGA MENZIESII	PSEUDOTSUGA MENZIESII	42	20	GOOD	FAIR	YES	CODOMINANT AT 15' WITH INCLUDED BARK	
DOUGLAS-FIR	14	PSEUDOTSUGA MENZIESII	PSEUDOTSUGA MENZIESII	N/A	N/A	N/A	N/A	N/A	NUMBER NOT USED	
DOUGLAS-FIR	15	PSEUDOTSUGA MENZIESII	PSEUDOTSUGA MENZIESII	22	11	GOOD	FAIR	YES	MODERATELY ONE SIDED	
DOUGLAS-FIR	16	PSEUDOTSUGA MENZIESII	PSEUDOTSUGA MENZIESII	24	18	GOOD	FAIR	YES	MODERATELY ONE SIDED, CODOMINANT AT 20' WITH INCLUDED BARK	
DOUGLAS-FIR	17	PSEUDOTSUGA MENZIESII	PSEUDOTSUGA MENZIESII	14	9	GOOD	FAIR	YES	ONE SIDED, MARGINAL TRUNK TAPER	
SCOULEERS WILLOW	18	Salix scouleriana	Salix scouleriana	11	8	POOR	POOR	NO	EXTENSIVE TOP FAILURES	
BIGLEAF MAPLE	19	ACER MACROPHYLLUM	ACER MACROPHYLLUM	14	11	GOOD	FAIR	YES	ONE SIDED	
BIGLEAF MAPLE	20	ACER MACROPHYLLUM	ACER MACROPHYLLUM	29	25	FAIR	FAIR	NO	MULTIPLE LEADERS AT LOWER TRUNK WITH INCLUDED BARK, PAST BRANCH FAILURES WITH DECAY	
BIGLEAF MAPLE	21	ACER MACROPHYLLUM	ACER MACROPHYLLUM	16,15,14	20	GOOD	FAIR	YES	MULTIPLE LEADERS AT GROUND LEVEL	
DOUGLAS-FIR	22	PSEUDOTSUGA MENZIESII	PSEUDOTSUGA MENZIESII	34	20	GOOD	FAIR	YES	MODERATELY ONE SIDED	
SCOULEERS WILLOW	23	Salix scouleriana	Salix scouleriana	12,10	15	VERY POOR	VERY POOR	NO	EXTENSIVE DIEBACK AND DECAY	
BIGLEAF MAPLE	24	ACER MACROPHYLLUM	ACER MACROPHYLLUM	20	20	POOR	POOR	NO	SCAFFOLD BRANCH DIEBACK	
BIGLEAF MAPLE	25	ACER MACROPHYLLUM	ACER MACROPHYLLUM	5,12,12	12	FAIR	FAIR	NO	MULTIPLE LEADERS AT GROUND LEVEL, PAST STEM FAILURES AND SCAFFOLD DIEBACK	
BIGLEAF MAPLE	26	ACER MACROPHYLLUM	ACER MACROPHYLLUM	18	25	FAIR	FAIR	NO	ONE SIDED, PREVIOUSLY LOST TOP	
BIGLEAF MAPLE	27	ACER MACROPHYLLUM	ACER MACROPHYLLUM	21	18	FAIR	FAIR	NO	MULTIPLE LEADERS AT 2' WITH INCLUDED BARK, SCAFFOLD BRANCH DIEBACK	
DOUGLAS-FIR	28	PSEUDOTSUGA MENZIESII	PSEUDOTSUGA MENZIESII	9	11	GOOD	FAIR	YES	OVERTOPPED BY ADJACENT TREES	
SWEET CHERRY	29	Prunus avium	Prunus avium	10,10,8	8	GOOD	FAIR	NO	MULTIPLE LEADERS AT GROUND LEVEL, ONE SIDED, LOW VIGOR	
DOUGLAS-FIR	30	PSEUDOTSUGA MENZIESII	PSEUDOTSUGA MENZIESII	30	18	GOOD	FAIR	YES	MODERATELY ONE SIDED	
BIGLEAF MAPLE	31	ACER MACROPHYLLUM	ACER MACROPHYLLUM	21	20	FAIR	FAIR	NO	ONE SIDED, CODOMINANT AT 3' WITH INCLUDED BARK, SCAFFOLD BRANCH DIEBACK	
DOUGLAS-FIR	32	PSEUDOTSUGA MENZIESII	PSEUDOTSUGA MENZIESII	10	12	GOOD	FAIR	YES	OVERTOPPED BY ADJACENT TREES	
BIGLEAF MAPLE	33	ACER MACROPHYLLUM	ACER MACROPHYLLUM	15	15	GOOD	FAIR	YES	ONE SIDED, MARGINAL TRUNK TAPER	
BIGLEAF MAPLE	34	ACER MACROPHYLLUM	ACER MACROPHYLLUM	20	18	GOOD	FAIR	YES	MULTIPLE LEADERS, HIGH CROWN	
BIGLEAF MAPLE	35	ACER MACROPHYLLUM	ACER MACROPHYLLUM	14	7	GOOD	FAIR	NO	ONE SIDED, OVERTOPPED BY ADJACENT TREES, MODERATELY SUPPRESSED	
BIGLEAF MAPLE	36	ACER MACROPHYLLUM	ACER MACROPHYLLUM	16,12,11	23	FAIR	FAIR	NO	MULTIPLE LEADERS AT GROUND LEVEL, SLOUGHING BARK AT LOWER TRUNK	
N/A	37	N/A	N/A	N/A	N/A	N/A	N/A	N/A	NUMBER NOT USED	
DOUGLAS-FIR	38	PSEUDOTSUGA MENZIESII	PSEUDOTSUGA MENZIESII	31	25	GOOD	FAIR	YES	MODERATELY ONE SIDED	
DOUGLAS-FIR	39	PSEUDOTSUGA MENZIESII	PSEUDOTSUGA MENZIESII	13	14	GOOD	FAIR	YES	35% LIVE CROWN RATIO (LCR), MARGINAL TRUNK TAPER	
DOUGLAS-FIR	40	PSEUDOTSUGA MENZIESII	PSEUDOTSUGA MENZIESII	18	15	GOOD	FAIR	YES	ONE SIDED	
WESTERN RED CEDAR	41	Thuja plicata	Thuja plicata	14,10	0	VERY POOR	VERY POOR	NO	DEAD	
WESTERN RED CEDAR	42	Thuja plicata	Thuja plicata	18	18	FAIR	FAIR	NO	OVERTOPPED BY ADJACENT TREES, SIGNIFICANT LEAN, CODOMINANT AT GROUND LEVEL, DECAY AT LOWER STEMS	
WESTERN RED CEDAR	43	Thuja plicata	Thuja plicata	31	15	FAIR	FAIR	NO	SIGNIFICANT BARK DAMAGE AND DECAY AT LOWER TRUNK, MULTIPLE LEADERS AT 3' WITH INCLUDED BARK	
DOUGLAS-FIR	44	PSEUDOTSUGA MENZIESII	PSEUDOTSUGA MENZIESII	24	16	GOOD	FAIR	YES	MODERATELY ONE SIDED	
DOUGLAS-FIR	45	PSEUDOTSUGA MENZIESII	PSEUDOTSUGA MENZIESII	20	10	GOOD	FAIR	YES	ONE SIDED, MARGINAL TRUNK TAPER	
DOUGLAS-FIR	46	PSEUDOTSUGA MENZIESII	PSEUDOTSUGA MENZIESII	9	11	GOOD	FAIR	YES	ONE SIDED, OVERTOPPED BY ADJACENT TREES	
WESTERN RED CEDAR	47	Thuja plicata	Thuja plicata	14	12	FAIR	FAIR	NO	SIGNIFICANT BARK DAMAGE AT LOWER TRUNK	
RED ALDER	48	Alnus rubra	Alnus rubra	15	15	POOR	POOR	NO	ONE SIDED, PAST CODOMINANT STEM FAILURE	
WESTERN RED CEDAR	49	Thuja plicata	Thuja plicata	8	12	GOOD	FAIR	NO	EXTENSIVE TOP DIEBACK	
DOUGLAS-FIR	50	PSEUDOTSUGA MENZIESII	PSEUDOTSUGA MENZIESII	59	25	GOOD	FAIR	YES	CODOMINANT AT 2'	
SWEET CHERRY	51	Prunus avium	Prunus avium	10	8	FAIR	FAIR	NO	ONE SIDED, THIN CROWN	
SWEET CHERRY	52	Prunus avium	Prunus avium	9	5	GOOD	FAIR	NO	ONE SIDED, ON PROPERTY LINE?	
DOUGLAS-FIR	53	PSEUDOTSUGA MENZIESII	PSEUDOTSUGA MENZIESII	68	30	GOOD	FAIR	YES	ONE SIDED	
WESTERN RED CEDAR	54	Thuja plicata	Thuja plicata	38	13	FAIR	FAIR	NO	LARGE SCAR AT LOWER TRUNK	
DOUGLAS-FIR	55	PSEUDOTSUGA MENZIESII	PSEUDOTSUGA MENZIESII	30	20	GOOD	FAIR	YES	MODERATELY ONE SIDED	
BIGLEAF MAPLE	56	ACER MACROPHYLLUM	ACER MACROPHYLLUM	9	1	GOOD	FAIR	NO	OVERTOPPED BY ADJACENT TREES, SIGNIFICANT LEAN, DECAY SEAM AT LOWER TRUNK	
DOUGLAS-FIR	57	PSEUDOTSUGA MENZIESII	PSEUDOTSUGA MENZIESII	9	7	GOOD	FAIR	NO	MARGINAL TRUNK TAPER	
DOUGLAS-FIR	58	PSEUDOTSUGA MENZIESII	PSEUDOTSUGA MENZIESII	7	7	FAIR	FAIR	NO	OVERTOPPED BY ADJACENT TREES, MODERATELY SUPPRESSED, MARGINAL TRUNK TAPER	
DOUGLAS-FIR	59	PSEUDOTSUGA MENZIESII	PSEUDOTSUGA MENZIESII	20	11	GOOD	FAIR	YES	ONE SIDED, MARGINAL TRUNK TAPER	
DOUGLAS-FIR	60	PSEUDOTSUGA MENZIESII	PSEUDOTSUGA MENZIESII	13	3	GOOD	FAIR	YES	MARGINAL TRUNK TAPER, CROWN EXTENSION SUPPRESSED BY ADJACENT TREES	
DOUGLAS-FIR	61	PSEUDOTSUGA MENZIESII	PSEUDOTSUGA MENZIESII	32	11	GOOD	FAIR	YES	ONE SIDED	
DOUGLAS-FIR	62	PSEUDOTSUGA MENZIESII	PSEUDOTSUGA MENZIESII	16	12	GOOD	FAIR	YES	ONE SIDED, MARGINAL TRUNK TAPER	
DOUGLAS-FIR	63	PSEUDOTSUGA MENZIESII	PSEUDOTSUGA MENZIESII	11	18	GOOD	FAIR	YES	ONE SIDED	
DOUGLAS-FIR	64	PSEUDOTSUGA MENZIESII	PSEUDOTSUGA MENZIESII	24	22	GOOD	FAIR	YES	ONE SIDED	
DOUGLAS-FIR	65	PSEUDOTSUGA MENZIESII	PSEUDOTSUGA MENZIESII	14	6	FAIR	FAIR	NO	MODERATELY SUPPRESSED, POOR TRUNK TAPER	
DOUGLAS-FIR	66	PSEUDOTSUGA MENZIESII	PSEUDOTSUGA MENZIESII	11	5	FAIR	FAIR	NO	MODERATELY SUPPRESSED, POOR TRUNK TAPER	
DOUGLAS-FIR	67	PSEUDOTSUGA MENZIESII	PSEUDOTSUGA MENZIESII	25	14	FAIR	FAIR	NO	EXTENSIVE PORCOADALEA PINI CONKS AT LOWER TRUNK	
DOUGLAS-FIR	68	PSEUDOTSUGA MENZIESII	PSEUDOTSUGA MENZIESII	11	10	GOOD	FAIR	YES	ONE SIDED, CODOMINANT AT 15'	
DOUGLAS-FIR	69	PSEUDOTSUGA MENZIESII	PSEUDOTSUGA MENZIESII	22	10	GOOD	FAIR	YES	ONE SIDED	
DOUGLAS-FIR	70	PSEUDOTSUGA MENZIESII	PSEUDOTSUGA MENZIESII	12	12	GOOD	FAIR	NO	CODOMINANT STEM PREVIOUSLY REMOVED, MARGINAL TRUNK TAPER	
DOUGLAS-FIR	71	PSEUDOTSUGA MENZIESII	PSEUDOTSUGA MENZIESII	9	9	GOOD	FAIR	NO	MODERATELY ONE SIDED	
DOUGLAS-FIR	72	PSEUDOTSUGA MENZIESII	PSEUDOTSUGA MENZIESII	11	15	FAIR	FAIR	NO	MARGINAL TRUNK TAPER, RECENTLY EXPOSED	
DOUGLAS-FIR	73	PSEUDOTSUGA MENZIESII	PSEUDOTSUGA MENZIESII	43	31	GOOD	FAIR	YES	ONE SIDED, MULTIPLE LEADERS AT 40'	
DOUGLAS-FIR	74	PSEUDOTSUGA MENZIESII	PSEUDOTSUGA MENZIESII	35	21	GOOD	FAIR	YES	ONE SIDED, MULTIPLE LEADERS AT 40'	
DOUGLAS-FIR	75	PSEUDOTSUGA MENZIESII	PSEUDOTSUGA MENZIESII	40	22	GOOD	FAIR	YES	ONE SIDED, MULTIPLE LEADERS AT 40'	
DOUGLAS-FIR	76	PSEUDOTSUGA MENZIESII	PSEUDOTSUGA MENZIESII	6	9	GOOD	GOOD	NO	ONE SIDED	
DOUGLAS-FIR	77	PSEUDOTSUGA MENZIESII	PSEUDOTSUGA MENZIESII	11	8	GOOD	GOOD	NO	ONE SIDED	
DOUGLAS-FIR	78	PSEUDOTSUGA MENZIESII	PSEUDOTSUGA MENZIESII	8	10	GOOD	GOOD	NO	ONE SIDED	
GIANT SEQUOIA	79	Sequoiadendron giganteum	Sequoiadendron giganteum	85	28	GOOD	FAIR	YES	MULTIPLE LEADERS AT TOP OF CROWN	
EUROPEAN LARCH	80	Larix laricina	Larix laricina	10	10	FAIR	FAIR	NO	CHLOROTIC EXTENSIVE ROOT FAILURES	
ENGLISH HOLLY	81	Ilex aquifolium	Ilex aquifolium	10,8,6	0	FAIR	FAIR	NO	MULTIPLE LEADERS AT GROUND LEVEL	
ORCHARD APPLE	82	Malus domestica	Malus domestica	12	12	GOOD	GOOD	NO	ONE SIDED	
ORCHARD APPLE	83	Malus domestica	Malus domestica	14	11	FAIR	FAIR	NO	SIGNIFICANT DECAY AT LOWER TRUNK, CODOMINANT AT 1'	
ORCHARD APPLE	84	Malus domestica	Malus domestica	2	13	FAIR	FAIR	NO	DECAY AT LOWER TRUNK	
ORCHARD APPLE	85	Malus domestica	Malus domestica	10	8	POOR	POOR	NO	TOP FAILURE, SIGNIFICANT ROOT SUCKERS	
ORCHARD APPLE	86	Malus domestica	Malus domestica	16	13	FAIR	FAIR	NO	SIGNIFICANT TRUNK DECAY, MULTIPLE LEADERS AT 1'	
ORCHARD PEAR	87	Pyrus sp.	Pyrus sp.	19	14	VERY POOR	POOR	NO	FALLEN OVER	
ORCHARD PEAR	88	Pyrus sp.	Pyrus sp.	8	8	GOOD	GOOD	NO	ONE SIDED	
ORCHARD PEAR	89	Pyrus sp.	Pyrus sp.	7	1	GOOD	GOOD	NO	ONE SIDED	
ORCHARD APPLE	90	Malus domestica	Malus domestica	1	14	GOOD	GOOD	YES	ONE SIDED	
DOUGLAS-FIR	91	PSEUDOTSUGA MENZIESII	PSEUDOTSUGA MENZIESII	49	25	GOOD	FAIR	YES	CODOMINANT AT 30' WITH INCLUDED BARK	
SCOULEERS WILLOW	92	Salix scouleriana	Salix scouleriana	6,5,5,4,8	18	POOR	POOR	NO	MULTIPLE LEADERS AT GROUND LEVEL, BRANCH DIEBACK	
ENGLISH HAWTHORN	93	Crataegus monogyna	Crataegus monogyna	18	18	GOOD	FAIR	YES	MULTIPLE LEADERS	
BIGLEAF MAPLE	94	ACER MACROPHYLLUM	ACER MACROPHYLLUM	8,15	15	GOOD	FAIR	YES	MULTIPLE LEADERS AT GROUND LEVEL	
DOUGLAS-FIR	95	PSEUDOTSUGA MENZIESII	PSEUDOTSUGA MENZIESII	22	20	GOOD	FAIR	YES	ONE SIDED	
DOUGLAS-FIR	96	PSEUDOTSUGA MENZIESII	PSEUDOTSUGA MENZIESII	26	25	GOOD	FAIR	YES	ONE SIDED	
DOUGLAS-FIR	97	PSEUDOTSUGA MENZIESII	PSEUDOTSUGA MENZIESII	32	30	GOOD	FAIR	YES	ONE SIDED	
DOUGLAS-FIR	98	PSEUDOTSUGA MENZIESII	PSEUDOTSUGA MENZIESII	8	9	GOOD	GOOD	NO	ONE SIDED	
BIGLEAF MAPLE	99	ACER MACROPHYLLUM	ACER MACROPHYLLUM	6	8	GOOD	FAIR	NO	ONE SIDED, PREVIOUS LEADER FAILURE	
DOUGLAS-FIR	100	PSEUDOTSUGA MENZIESII	PSEUDOTSUGA MENZIESII	31	25	GOOD	FAIR	YES	ONE SIDED, CODOMINANT WITH ADJACENT TREES	
DOUGLAS-FIR	101	PSEUDOTSUGA MENZIESII	PSEUDOTSUGA MENZIESII	11	8	GOOD	FAIR	YES	ONE SIDED, OVERTOPPED BY ADJACENT TREES	
DOUGLAS-FIR	102	PSEUDOTSUGA MENZIESII	PSEUDOTSUGA MENZIESII	32	25	GOOD	FAIR	YES	ONE SIDED, SUPPRESSED CROWN EXTENSION	
DOUGLAS-FIR	103	PSEUDOTSUGA MENZIESII	PSEUDOTSUGA MENZIESII	35	20	GOOD	FAIR	YES	ONE SIDED, SUPPRESSED CROWN EXTENSION	
DOUGLAS-FIR	104	PSEUDOTSUGA MENZIESII	PSEUDOTSUGA MENZIESII	1	5	GOOD	FAIR	NO	OVERTOPPED BY ADJACENT TREES	
DOUGLAS-FIR	105	PSEUDOTSUGA MENZIESII	PSEUDOTSUGA MENZIESII	28	20	GOOD	FAIR	YES	ONE SIDED	
DOUGLAS-FIR	106	PSEUDOTSUGA MENZIESII	PSEUDOTSUGA MENZIESII	40	30	GOOD	FAIR	YES	MODERATELY ONE SIDED	
DOUGLAS-FIR	107	PSEUDOTSUGA MENZIESII	PSEUDOTSUGA MENZIESII	42	30	GOOD	FAIR	YES	ONE SIDED	
DOUGLAS-FIR	108	PSEUDOTSUGA MENZIESII	PSEUDOTSUGA MENZIESII	46	30	GOOD	FAIR	YES	ONE SIDED	
BIGLEAF MAPLE	109	ACER MACROPHYLLUM	ACER MACROPHYLLUM	9	20	GOOD	FAIR	NO	ONE SIDED, OVERTOPPED BY ADJACENT TREES	
BIGLEAF MAPLE	110	ACER MACROPHYLLUM								

TREE TO BE SAVED OR REMOVED	TREE RETENTION OPTION	COMMENTS
289 BIGLEAF MAPLE ACER MACROPHYLLUM 15 20 FAIR	NO	ONE SIDED, UNDERSIZED LEAVES
290 BIGLEAF MAPLE ACER MACROPHYLLUM 11 25 POOR	NO	CODOMINANT AT 1' WITH INCLUDED BARK, CODOMINANT STEM FAILED
291 BIGLEAF MAPLE ACER MACROPHYLLUM 25 25 FAIR	NO	UNDERSIZED LEAVES
292 WESTERN HEMLOCK TSUGA HETEROPHYLLA 24 20 FAIR	NO	ONE SIDED, UNDERSIZED LEAVES
293 DOUGLAS-FIR PSEUDOTSUGA MENZIESII 31 20 GOOD	YES	ONE SIDED
294 SCOUCLERS WILLOW SALIX SCOUCLERIANA 15 8 POOR	NO	EXTENSIVE DIEBACK AND DECAY
295 BIGLEAF MAPLE ACER MACROPHYLLUM 20 15 GOOD	YES	ONE SIDED
296 SWEET CHERRY PRUNUS AVIUM 12 20 GOOD	YES	UNDERSIZED LEAVES, ONE SIDED
297 DOUGLAS-FIR PSEUDOTSUGA MENZIESII 28 20 GOOD	YES	MODERATELY ONE SIDED
298 DOUGLAS-FIR PSEUDOTSUGA MENZIESII 32 25 GOOD	YES	MODERATELY ONE SIDED
299 BIGLEAF MAPLE ACER MACROPHYLLUM 21 30 GOOD	YES	ONE SIDED, MULTIPLE LEADERS AT 10'
300 DOUGLAS-FIR PSEUDOTSUGA MENZIESII 1 1 FAIR	NO	OVERTOPPED BY ADJACENT TREES, SUPPRESSED
301 SWEET CHERRY PRUNUS AVIUM 1 3 VERY POOR	VERY POOR	NO 30% DEAD
302 BIGLEAF MAPLE ACER MACROPHYLLUM 30 30 FAIR	FAIR	NO SIGNIFICANT DECAY AT ROOT CROWN, ONE SIDED
303 DOUGLAS-FIR PSEUDOTSUGA MENZIESII 23 15 GOOD	YES	MODERATELY ONE SIDED
304 DOUGLAS-FIR PSEUDOTSUGA MENZIESII 26 18 GOOD	YES	MODERATELY ONE SIDED
305 BIGLEAF MAPLE ACER MACROPHYLLUM 16 20 GOOD	YES	ONE SIDED
306 WESTERN HEMLOCK TSUGA HETEROPHYLLA 18 20 FAIR	NO	33% LCR, UNDERSIZED LEAVES, MARGINAL TRUNK TAPER
307 BIGLEAF MAPLE ACER MACROPHYLLUM 18 15 POOR	FAIR	NO OVERTOPPED BY ADJACENT TREES, MULTIPLE LEADERS NEAR GROUND LEVEL
308 DOUGLAS-FIR PSEUDOTSUGA MENZIESII 21 25 GOOD	YES	60% LCR
309 BIGLEAF MAPLE ACER MACROPHYLLUM 10 10 POOR	POOR	NO OVERTOPPED BY ADJACENT TREES, TOP FAILED
310 BLACK HAUTHORN CRATAEGUS DOUGLASII 8 10 FAIR	NO	SIGNIFICANT LEAN, OVERTOPPED BY ADJACENT TREES, MODERATELY SUPPRESSED
311 BLACK COTTONWOOD POPULUS TRICHOCARPA 12 10 FAIR	NO	OVERTOPPED BY ADJACENT TREES, MODERATELY SUPPRESSED
312 BIGLEAF MAPLE ACER MACROPHYLLUM 35 25 GOOD	YES	MULTIPLE LEADERS AT LOWER TRUNK WITH INCLUDED BARK
313 BIGLEAF MAPLE ACER MACROPHYLLUM 20 20 FAIR	NO	PREVIOUS TOP FAILURES
314 BIGLEAF MAPLE ACER MACROPHYLLUM 14 15 GOOD	FAIR	NO ONE SIDED, MARGINAL TRUNK TAPER
315 BIGLEAF MAPLE ACER MACROPHYLLUM 21 25 GOOD	YES	MULTIPLE LEADERS AT 2' WITH INCLUDED BARK, ONE SIDED
316 SWEET CHERRY PRUNUS AVIUM 28 25 GOOD	POOR	NO SUPPRESSED
317 DOUGLAS-FIR PSEUDOTSUGA MENZIESII 28 25 GOOD	GOOD	YES
318 DOUGLAS-FIR PSEUDOTSUGA MENZIESII 41 25 GOOD	FAIR	YES SWEEP IN LOWER TRUNK
319 DOUGLAS-FIR PSEUDOTSUGA MENZIESII 21 20 GOOD	FAIR	YES MODERATELY ONE SIDED
320 RED ALDER ALNUS RUBRA 8 10 POOR	POOR	NO THIN CROWN
321 RED ALDER ALNUS RUBRA 13 13 FAIR	FAIR	NO ONE SIDED, MARGINAL TRUNK TAPER
322 DOUGLAS-FIR PSEUDOTSUGA MENZIESII 6 6 FAIR	FAIR	NO MODERATELY SUPPRESSED, OVERTOPPED BY ADJACENT TREES
323 RED ALDER ALNUS RUBRA 10 10 POOR	POOR	NO ONE SIDED, MARGINAL TRUNK TAPER
324 RED ALDER ALNUS RUBRA 8 10 FAIR	FAIR	NO ONE SIDED, MARGINAL TRUNK TAPER
325 RED ALDER ALNUS RUBRA 8 5 POOR	POOR	NO SUPPRESSED
326 DOUGLAS-FIR PSEUDOTSUGA MENZIESII 28 25 GOOD	FAIR	YES MODERATELY ONE SIDED
327 PACIFIC DOGWOOD CORNUS NITIDA 10 10 POOR	POOR	NO SUPPRESSED
328 WESTERN HEMLOCK TSUGA HETEROPHYLLA 26 25 GOOD	FAIR	YES GROWING ON OLD STUMP
329 SCOUCLERS WILLOW SALIX SCOUCLERIANA 8 1 POOR	POOR	NO EXTENSIVE DIEBACK AND DECAY
330 DOUGLAS-FIR PSEUDOTSUGA MENZIESII 22 10 FAIR	FAIR	NO ONE SIDED, MARGINAL TRUNK TAPER
331 BLACK HAUTHORN CRATAEGUS DOUGLASII 6 8 FAIR	FAIR	NO MODERATELY SUPPRESSED
332 SWEET CHERRY PRUNUS AVIUM 9 5 FAIR	FAIR	NO ONE SIDED, MODERATELY THIN CROWN
333 SWEET CHERRY PRUNUS AVIUM 9 5 FAIR	FAIR	NO ONE SIDED, MODERATELY THIN CROWN
334 SWEET CHERRY PRUNUS AVIUM 9 5 FAIR	FAIR	NO MODERATELY THIN CROWN
335 BIGLEAF MAPLE ACER MACROPHYLLUM 16 20 FAIR	FAIR	NO OVERTOPPED BY ADJACENT TREES, MODERATELY SUPPRESSED
336 WESTERN HEMLOCK TSUGA HETEROPHYLLA 16 10 FAIR	FAIR	NO CODOMINANT AT 1', OVERTOPPED BY ADJACENT TREES, MODERATELY SUPPRESSED
337 WESTERN HEMLOCK TSUGA HETEROPHYLLA 21 20 GOOD	FAIR	NO OVERTOPPED BY ADJACENT TREES, MODERATELY SUPPRESSED
338 WESTERN HEMLOCK TSUGA HETEROPHYLLA 21 15 FAIR	FAIR	NO ONE SIDED, CODOMINANT STEM PREVIOUSLY REMOVED AT LOWER TRUNK
339 WESTERN HEMLOCK TSUGA HETEROPHYLLA 25 15 GOOD	FAIR	YES ONE SIDED
340 WESTERN HEMLOCK TSUGA HETEROPHYLLA 19 15 GOOD	FAIR	YES ONE SIDED
341 DOUGLAS-FIR PSEUDOTSUGA MENZIESII 30 15 GOOD	FAIR	YES MODERATELY ONE SIDED
342 DOUGLAS-FIR PSEUDOTSUGA MENZIESII 41 25 GOOD	FAIR	YES MODERATELY ONE SIDED
343 SCOUCLERS WILLOW SALIX SCOUCLERIANA 14 10 15 POOR	POOR	NO EXTENSIVE DIEBACK AND DECAY
344 WESTERN HEMLOCK TSUGA HETEROPHYLLA 8 10 POOR	POOR	NO KINKY LOWER TRUNK
345 DOUGLAS-FIR PSEUDOTSUGA MENZIESII 8 10 GOOD	FAIR	NO ONE SIDED, OVERTOPPED BY ADJACENT TREES
346 BIGLEAF MAPLE ACER MACROPHYLLUM 24 25 GOOD	FAIR	YES ONE SIDED
347 BIGLEAF MAPLE ACER MACROPHYLLUM 21 20 GOOD	FAIR	YES ONE SIDED
348 WESTERN HEMLOCK TSUGA HETEROPHYLLA 1 10 POOR	POOR	NO OVERTOPPED BY ADJACENT TREES, GROWING ON OLD STUMP
349 WESTERN HEMLOCK TSUGA HETEROPHYLLA 20 18 GOOD	GOOD	YES
350 DOUGLAS-FIR PSEUDOTSUGA MENZIESII 16 15 GOOD	FAIR	YES ONE SIDED, OVERTOPPED BY ADJACENT TREES
351 DOUGLAS-FIR PSEUDOTSUGA MENZIESII 44 20 GOOD	FAIR	YES ONE SIDED
352 DOUGLAS-FIR PSEUDOTSUGA MENZIESII 21 20 GOOD	FAIR	YES ONE SIDED
353 DOUGLAS-FIR PSEUDOTSUGA MENZIESII 44 25 GOOD	FAIR	YES ONE SIDED
354 DOUGLAS-FIR PSEUDOTSUGA MENZIESII 45 30 GOOD	FAIR	YES MODERATELY ONE SIDED
355 DOUGLAS-FIR PSEUDOTSUGA MENZIESII 38 20 GOOD	FAIR	YES MODERATELY ONE SIDED
356 BIGLEAF MAPLE ACER MACROPHYLLUM 6 20 GOOD	NO	NO
357 DOUGLAS-FIR PSEUDOTSUGA MENZIESII 29 20 GOOD	FAIR	YES ONE SIDED
358 DOUGLAS-FIR PSEUDOTSUGA MENZIESII 33 20 GOOD	FAIR	YES ONE SIDED
359 DOUGLAS-FIR PSEUDOTSUGA MENZIESII 34 25 GOOD	FAIR	YES ONE SIDED
360 DOUGLAS-FIR PSEUDOTSUGA MENZIESII 56 30 GOOD	FAIR	YES CODOMINANT AT 2', 16' CODOMINANT STEM SUPPRESSED
361 DOUGLAS-FIR PSEUDOTSUGA MENZIESII 10 10 FAIR	FAIR	NO ONE SIDED, MODERATELY SUPPRESSED, MARGINAL TRUNK TAPER
362 DOUGLAS-FIR PSEUDOTSUGA MENZIESII 8 10 FAIR	FAIR	NO ONE SIDED, MODERATELY SUPPRESSED, MARGINAL TRUNK TAPER
363 DOUGLAS-FIR PSEUDOTSUGA MENZIESII 34 30 GOOD	FAIR	YES ONE SIDED, 50% LCR
364 DOUGLAS-FIR PSEUDOTSUGA MENZIESII 52 25 GOOD	FAIR	YES CODOMINANT AT 1' WITH INCLUDED BARK
365 BIGLEAF MAPLE ACER MACROPHYLLUM 15 15 FAIR	FAIR	NO MODERATELY SUPPRESSED
366 DOUGLAS-FIR PSEUDOTSUGA MENZIESII 40 30 GOOD	FAIR	YES ONE SIDED
367 WESTERN HEMLOCK TSUGA HETEROPHYLLA 11 15 GOOD	FAIR	YES ONE SIDED, OVERTOPPED BY ADJACENT TREES
368 WESTERN HEMLOCK TSUGA HETEROPHYLLA 41 20 FAIR	GOOD	NO MODERATELY THIN CROWN
369 BIGLEAF MAPLE ACER MACROPHYLLUM 12 0 FAIR	FAIR	NO OVERTOPPED BY ADJACENT TREES, MODERATELY SUPPRESSED
370 WESTERN HEMLOCK TSUGA HETEROPHYLLA 30 0 VERY POOR	VERY POOR	NO DEAD
371 DOUGLAS-FIR PSEUDOTSUGA MENZIESII 29 15 GOOD	FAIR	YES 40% LCR
372 BIGLEAF MAPLE ACER MACROPHYLLUM 18 20 FAIR	FAIR	NO CODOMINANT AT GROUND LEVEL, ONE SIDED, OVERTOPPED BY ADJACENT TREES, MODERATELY SUPPRESSED
373 BIGLEAF MAPLE ACER MACROPHYLLUM 32 25 FAIR	FAIR	NO SIGNIFICANT DECAY AT ROOT CROWN, OVERTOPPED BY ADJACENT TREES, MODERATELY SUPPRESSED
374 WESTERN HEMLOCK TSUGA HETEROPHYLLA 14 0 VERY POOR	VERY POOR	NO DEAD
375 WESTERN HEMLOCK TSUGA HETEROPHYLLA 23 0 POOR	POOR	NO THINNING CROWN
376 WESTERN HEMLOCK TSUGA HETEROPHYLLA 23 15 GOOD	GOOD	YES
377 WESTERN HEMLOCK TSUGA HETEROPHYLLA 31 20 GOOD	FAIR	YES MODERATELY ONE SIDED
378 WESTERN HEMLOCK TSUGA HETEROPHYLLA 11 0 VERY POOR	VERY POOR	NO DEAD
379 DOUGLAS-FIR PSEUDOTSUGA MENZIESII 28 15 GOOD	FAIR	YES ONE SIDED
380 WESTERN HEMLOCK TSUGA HETEROPHYLLA 13 15 FAIR	FAIR	NO ONE SIDED, OVERTOPPED BY ADJACENT TREES, BRANCH DIEBACK
381 DOUGLAS-FIR PSEUDOTSUGA MENZIESII 16 15 GOOD	FAIR	YES MODERATELY ONE SIDED, MARGINAL TRUNK TAPER
382 BIGLEAF MAPLE ACER MACROPHYLLUM 10 10 GOOD	FAIR	NO OVERTOPPED BY ADJACENT TREES, MARGINAL TRUNK TAPER
383 DOUGLAS-FIR PSEUDOTSUGA MENZIESII 30 10 GOOD	FAIR	YES 50% LCR
384 WESTERN HEMLOCK TSUGA HETEROPHYLLA 21 15 GOOD	FAIR	YES ONE SIDED
385 BIGLEAF MAPLE ACER MACROPHYLLUM 14 15 FAIR	FAIR	NO OVERTOPPED BY ADJACENT TREES, MODERATELY SUPPRESSED
386 WESTERN HEMLOCK TSUGA HETEROPHYLLA 26 10 GOOD	FAIR	NO ONE SIDED, MODERATELY THIN CROWN
387 BIGLEAF MAPLE ACER MACROPHYLLUM 6 10 GOOD	GOOD	NO
388 DOUGLAS-FIR PSEUDOTSUGA MENZIESII 22 15 GOOD	FAIR	YES 50% LCR, MARGINAL TRUNK TAPER
389 BIGLEAF MAPLE ACER MACROPHYLLUM 22 10 GOOD	FAIR	NO ONE SIDED
390 BIGLEAF MAPLE ACER MACROPHYLLUM 22 1 FAIR	FAIR	NO OVERTOPPED BY ADJACENT TREES, MODERATELY SUPPRESSED
391 DOUGLAS-FIR PSEUDOTSUGA MENZIESII 25 20 GOOD	FAIR	YES 50% LCR, MARGINAL TRUNK TAPER
392 BIGLEAF MAPLE ACER MACROPHYLLUM 12 12 GOOD	FAIR	YES OVERTOPPED BY ADJACENT TREES
393 BIGLEAF MAPLE ACER MACROPHYLLUM 8 8 FAIR	FAIR	NO OVERTOPPED BY ADJACENT TREES, MODERATELY SUPPRESSED
394 WESTERN HEMLOCK TSUGA HETEROPHYLLA 22 15 POOR	POOR	NO SIGNIFICANT DIEBACK
395 DOUGLAS-FIR PSEUDOTSUGA MENZIESII 75 40 GOOD	FAIR	YES CODOMINANT AT 1'
396 BIGLEAF MAPLE ACER MACROPHYLLUM 6 10 FAIR	FAIR	NO ONE SIDED, OVERTOPPED BY ADJACENT TREES
397 BIGLEAF MAPLE ACER MACROPHYLLUM 15 20 GOOD	FAIR	NO ONE SIDED, OVERTOPPED BY ADJACENT TREES
398 DOUGLAS-FIR PSEUDOTSUGA MENZIESII 12 40 GOOD	FAIR	YES CODOMINANT AT 1' WITH INCLUDED BARK
399 DOUGLAS-FIR PSEUDOTSUGA MENZIESII 36 25 GOOD	FAIR	YES ONE SIDED
400 SCOUCLERS WILLOW SALIX SCOUCLERIANA 10 10 FAIR	FAIR	NO ONE SIDED
401 RED ALDER ALNUS RUBRA 1 5 GOOD	FAIR	NO ONE SIDED
402 RED ALDER ALNUS RUBRA 8 10 GOOD	FAIR	NO ONE SIDED
403 RED ALDER ALNUS RUBRA 11 10 GOOD	FAIR	YES ONE SIDED, CODOMINANT AT 5' WITH INCLUDED BARK
404 RED ALDER ALNUS RUBRA 8 10 GOOD	FAIR	YES EXTREME LEAN, CODOMINANT AT 1'
405 RED ALDER ALNUS RUBRA 1 1 GOOD	FAIR	NO MARGINAL TRUNK TAPER
406 RED ALDER ALNUS RUBRA 9 10 FAIR	FAIR	NO PREVIOUS TOP FAILURES
407 BIGLEAF MAPLE ACER MACROPHYLLUM 8 10 FAIR	FAIR	NO PREVIOUS TOP FAILURES
408 RED ALDER ALNUS RUBRA 15 10 FAIR	FAIR	NO DIEBACK, BOWED TRUNK
409 SCOUCLERS WILLOW SALIX SCOUCLERIANA 9 2 POOR	POOR	NO TOP FAILED AT 10'
410 BIGLEAF MAPLE ACER MACROPHYLLUM 6 20 FAIR	FAIR	NO ONE SIDED, UNDERSIZED LEAVES
411 SCOUCLERS WILLOW SALIX SCOUCLERIANA 6 2 POOR	POOR	NO SIGNIFICANT DIEBACK AND DECAY
412 DOUGLAS-FIR PSEUDOTSUGA MENZIESII 32 25 GOOD	FAIR	YES ONE SIDED
413 DOUGLAS-FIR PSEUDOTSUGA MENZIESII 26 10 GOOD	FAIR	YES ONE SIDED, 60% LCR
414 BIGLEAF MAPLE ACER MACROPHYLLUM 26 10 FAIR	FAIR	NO OVERTOPPED BY ADJACENT TREES, MODERATELY SUPPRESSED
415 DOUGLAS-FIR PSEUDOTSUGA MENZIESII 10 5 POOR	POOR	NO SUPPRESSED, DECAY AT LOWER TRUNK
416 DOUGLAS-FIR PSEUDOTSUGA MENZIESII 18 10 FAIR	FAIR	NO MODERATELY SUPPRESSED
417 DOUGLAS-FIR PSEUDOTSUGA MENZIESII 28 10 FAIR	FAIR	NO 40% LCR, BOWED LOWER TRUNK
418 DOUGLAS-FIR PSEUDOTSUGA MENZIESII 14 10 FAIR	FAIR	NO MODERATELY SUPPRESSED, MARGINAL TRUNK TAPER
419 DOUGLAS-FIR PSEUDOTSUGA MENZIESII 28 20 GOOD	FAIR	YES 50% LCR
420 DOUGLAS-FIR PSEUDOTSUGA MENZIESII 12 10 POOR	POOR	NO SUPPRESSED, KINKED TRUNK
421 BIGLEAF MAPLE ACER MACROPHYLLUM 16 15 GOOD	FAIR	YES MODERATELY SUPPRESSED, EPICORMIC GROWTH AT LOWER TRUNK
422 WESTERN HEMLOCK TSUGA HETEROPHYLLA 11 10 POOR	POOR	NO OVERTOPPED BY ADJACENT TREES, EXTENSIVE DIEBACK
423 WESTERN HEMLOCK TSUGA HETEROPHYLLA 29 20 FAIR	GOOD	NO MODERATELY THIN CROWN
424 WESTERN HEMLOCK TSUGA HETEROPHYLLA 13 15 GOOD	FAIR	NO ONE SIDED, MODERATELY THIN CROWN
425 WESTERN HEMLOCK TSUGA HETEROPHYLLA 23 0 VERY POOR	VERY POOR	NO DEAD
426 WESTERN HEMLOCK TSUGA HETEROPHYLLA 10 0 VERY POOR	VERY POOR	NO DEAD
427 WESTERN HEMLOCK TSUGA HETEROPHYLLA 29 20 FAIR	FAIR	NO ONE SIDED, MODERATELY THIN CROWN
428 BIGLEAF MAPLE ACER MACROPHYLLUM 11 20 FAIR	FAIR	NO OVERTOPPED BY ADJACENT TREES, EPICORMIC GROWTH ON LOWER TRUNK
429 DOUGLAS-FIR PSEUDOTSUGA MENZIESII 39 20 GOOD	FAIR	YES 50% LCR
430 BIGLEAF MAPLE ACER MACROPHYLLUM 8 3 POOR	POOR	NO OVERTOPPED BY ADJACENT TREES, EPICORMIC GROWTH ON LOWER TRUNK
431 BIGLEAF MAPLE ACER MACROPHYLLUM 8 3 POOR	POOR	NO SUPPRESSED

TREE TO BE SAVED OR REMOVED	TREE RETENTION OPTION	COMMENTS
432 WESTERN HEMLOCK TSUGA HETEROPHYLLA 21 20 FAIR	FAIR	NO ONE SIDED, MODERATELY THIN CROWN
433 WESTERN HEMLOCK TSUGA HETEROPHYLLA 26 20 FAIR	FAIR	NO 50% LCR, MODERATELY THIN CROWN
434 WESTERN HEMLOCK TSUGA HETEROPHYLLA 22 0 VERY POOR	VERY POOR	NO DEAD, LEANS ON TREE 433
435 WESTERN HEMLOCK TSUGA HETEROPHYLLA 24 20 FAIR	FAIR	NO ONE SIDED, MODERATELY THIN CROWN
436 DOUGLAS-FIR PSEUDOTSUGA MENZIESII 8 8 FAIR	FAIR	NO OVERTOPPED BY ADJACENT TREES, ONE SIDED, SUPPRESSED
437 DOUGLAS-FIR PSEUDOTSUGA MENZIESII 40 20 GOOD	FAIR	YES MODERATELY ONE SIDED
438 BIGLEAF MAPLE ACER MACROPHYLLUM 9 10 FAIR	FAIR	NO OVERTOPPED BY ADJACENT TREES, KINKED LOWER TRUNK, EPICORMIC GROWTH ON LOWER TRUNK
439 DOUGLAS-FIR PSEUDOTSUGA MENZIESII 26 19 GOOD	FAIR	YES 40% LCR, MODERATELY ONE SIDED, MARGINAL TRUNK TAPER
440 WESTERN HEMLOCK TSUGA HETEROPHYLLA 19 20 GOOD	GOOD	YES
441 DOUGLAS-FIR PSEUDOTSUGA MENZIESII 29 20 GOOD	FAIR	YES 40% LCR, MODERATELY ONE SIDED
442 DOUGLAS-FIR PSEUDOTSUGA MENZIESII 21 20 GOOD	FAIR	NO ONE SIDED, MODERATELY SUPPRESSED, 35% LCR, MARGINAL TRUNK TAPER
443 DOUGLAS-FIR PSEUDOTSUGA MENZIESII 32 20 GOOD	FAIR	YES CROWN EXTENSION SUPPRESSED BY ADJACENT TREES
444 WESTERN HEMLOCK TSUGA HETEROPHYLLA 6 8 FAIR	FAIR	NO OVERTOPPED BY ADJACENT TREES, MODERATELY SUPPRESSED
445 DOUGLAS-FIR PSEUDOTSUGA MENZIESII 32 20 GOOD	FAIR	YES ONE SIDED
446 DOUGLAS-FIR PSEUDOTSUGA MENZIESII 29 20 GOOD	FAIR	NO SUPPRESSED, MARGINAL TRUNK TAPER
447 BIGLEAF MAPLE ACER MACROPHYLLUM 16 15 POOR	POOR	NO SUPPRESSED, BRANCH DIEBACK
448 DOUGLAS-FIR PSEUDOTSUGA MENZIESII 31 20 GOOD	FAIR	YES MODERATELY ONE SIDED
449 WESTERN HEMLOCK TSUGA HETEROPHYLLA 18 20 FAIR	FAIR	NO OVERTOPPED BY ADJACENT TREES, MODERATELY THIN CROWN
450 DOUGLAS-FIR PSEUDOTSUGA MENZIESII 31 22 GOOD	FAIR	YES MODERATELY ONE SIDED
451 WESTERN HEMLOCK TSUGA HETEROPHYLLA 6 0 VERY POOR	VERY POOR	NO DEAD
452 WESTERN HEMLOCK TSUGA HETEROPHYLLA 21 18 FAIR	FAIR	NO MODERATELY ONE SIDED, MODERATELY THIN CROWN
453 DOUGLAS-FIR PSEUDOTSUGA MENZIESII 34 22 GOOD	FAIR	YES MODERATELY ONE SIDED
454 DOUGLAS-FIR PSEUDOTSUGA MENZIESII 29 25 GOOD	FAIR	YES CROWN EXTENSION SUPPRESSED BY ADJACENT TREES
455 DOUGLAS-FIR PSEUDOTSUGA MENZIESII 32 22 GOOD	FAIR	YES CROWN EXTENSION SUPPRESSED BY ADJACENT TREES
456 BIGLEAF MAPLE ACER MACROPHYLLUM 9 15 FAIR	FAIR	NO OVERTOPPED BY ADJACENT TREES, EPICORMIC GROWTH AT LOWER TRUNK
457 WESTERN HEMLOCK TSUGA HETEROPHYLLA 9 0 VERY POOR	VERY POOR	NO DEAD
458 DOUGLAS-FIR PSEUDOTSUGA MENZIESII 11 15 FAIR	FAIR	NO ONE SIDED, MODERATELY SUPPRESSED
459 DOUGLAS-FIR PSEUDOTSUGA MENZIESII 28 18 GOOD	FAIR	YES ONE SIDED, 40% LCR
460 DOUGLAS-FIR PSEUDOTSUGA MENZIESII 29 18 GOOD	FAIR	YES 40% LCR
461 DOUGLAS-FIR PSEUDOTSUGA MENZIESII 10 0 VERY POOR	VERY POOR	NO DEAD
462 WESTERN HEMLOCK TSUGA HETEROPHYLLA 8 8 FAIR	FAIR	NO ONE SIDED, MODERATELY SUPPRESSED
463 BIGLEAF MAPLE ACER MACROPHYLLUM 6 6 POOR	POOR	NO THIN CROWN
464 BIGLEAF MAPLE ACER MACROPHYLLUM 9 15 GOOD	FAIR	NO ONE SIDED, OVERTOPPED BY ADJACENT TREES
465 DOUGLAS-FIR PSEUDOTSUGA MENZIESII 34 25 GOOD	FAIR	YES ONE SIDED
466 DOUGLAS-FIR PSEUDOTSUGA MENZIESII 32 18 GOOD	FAIR	YES ONE SIDED
467 WESTERN HEMLOCK TSUGA HETEROPHYLLA 22 15 FAIR	FAIR	NO CODOMINANT AT 25' WITH INCLUDED BARK, MODERATELY SUPPRESSED
468 WESTERN HEMLOCK TSUGA HETEROPHYLLA 26 15 FAIR	FAIR	NO ONE SIDED, MODERATELY THIN CROWN
469 WESTERN HEMLOCK TSUGA HETEROPHYLLA 19 12 FAIR	FAIR	NO MODERATELY THIN CROWN
470 BIGLEAF MAPLE ACER MACROPHYLLUM 20 20 GOOD	FAIR	YES 50% LCR
471 BIGLEAF MAPLE ACER MACROPHYLLUM 11 10 GOOD	FAIR	YES 35% LCR, MARGINAL TRUNK TAPER
472 WESTERN HEMLOCK TSUGA HETEROPHYLLA 32 15 POOR	POOR	NO SIGNIFICANTLY THIN CROWN
473 DOUGLAS-FIR PSEUDOTSUGA MENZIESII 13 14 FAIR	FAIR	YES ONE SIDED
474 WESTERN HEMLOCK TSUGA HETEROPHYLLA 13 14 FAIR	FAIR	NO ONE SIDED, OVERTOPPED BY ADJACENT TREES
475 WESTERN HEMLOCK TSUGA HETEROPHYLLA 21 20 GOOD	FAIR	YES ONE SIDED
476 BIGLEAF MAPLE ACER MACROPHYLLUM 15 18 FAIR	FAIR	NO ONE SIDED, UNDERSIZED LEAVES
477 BIGLEAF MAPLE ACER MACROPHYLLUM 10 10 POOR	POOR	NO OVERTOPPED BY ADJACENT TREES, DAMAGE AT LOWER TRUNK
478 BIGLEAF MAPLE ACER MACROPHYLLUM 6 8 FAIR	FAIR	NO OVERTOPPED BY ADJACENT TREES, MODERATELY SUPPRESSED
479 BIGLEAF MAPLE ACER MACROPHYLLUM 8 12 FAIR	FAIR	NO SIGNIFICANT LEAN, OVERTOPPED BY ADJACENT TREES, MODERATELY SUPPRESSED
480 DOUGLAS-FIR PSEUDOTSUGA MENZIESII 20 20 GOOD	POOR	NO ONE SIDED, CODOMINANT AT 2' WITH INCLUDED BARK
481 SWEET CHERRY PRUNUS AVIUM 9 6 FAIR	POOR	NO 20% LCR
482 SWEET CHERRY PRUNUS AVIUM 8 5 FAIR	POOR	NO 15% LCR
483 BIGLEAF MAPLE ACER MACROPHYLLUM 19 22 GOOD	FAIR	YES MODERATELY ONE SIDED
484 SWEET CHERRY PRUNUS AVIUM 5 5 POOR	POOR	NO HISTORY OF BRANCH FAILURE
485 BIGLEAF MAPLE ACER MACROPHYLLUM 41 25 FAIR	FAIR	NO HISTORY OF BRANCH FAILURE
486 BIGLEAF MAPLE ACER MACROPHYLLUM 16 15 FAIR	FAIR	NO ONE SIDED, 35% LCR, MARGINAL TRUNK TAPER
487 BIGLEAF MAPLE ACER MACROPHYLLUM 14 14 FAIR	FA	

TREE NO	COMMON NAME	SCIENTIFIC NAME	DBH	C-RAD	CONDITION	STRUCTURE	RETENTION OPTION	COMMENTS
516	DOUGLAS-FIR	PSEUDOTSUGA MENZIESII	15	10	GOOD	FAIR	YES	ONE SIDED, MARGINAL TRUNK TAPER, 40% LCR
517	DOUGLAS-FIR	PSEUDOTSUGA MENZIESII	21	15	GOOD	FAIR	YES	35% LCR, MARGINAL TRUNK TAPER
518	DOUGLAS-FIR	PSEUDOTSUGA MENZIESII	13	10	FAIR	FAIR	NO	ONE SIDED, OVERTOPPED BY ADJACENT TREES, MODERATELY SUPPRESSED
519	BIGLEAF MAPLE	ACER MACROPHYLLUM	13	8	FAIR	FAIR	NO	MODERATELY SUPPRESSED, EPICORMIC GROWTH AT LOWER TRUNK, CODOMINANT AT 2' WITH INCLUDED BARK
520	BIGLEAF MAPLE	ACER MACROPHYLLUM	1	18	FAIR	FAIR	NO	MODERATELY SUPPRESSED, EPICORMIC GROWTH AT LOWER TRUNK
521	DOUGLAS-FIR	PSEUDOTSUGA MENZIESII	45	30	GOOD	GOOD	YES	GOOD
522	SCOLLERS WILLOW	SALIX SCOLLERIANA	6	6	POOR	POOR	NO	25% LCR, SIGNIFICANT DIEBACK
523	BIGLEAF MAPLE	ACER MACROPHYLLUM	10	15	GOOD	FAIR	NO	ONE SIDED
524	BIGLEAF MAPLE	ACER MACROPHYLLUM	12	15	FAIR	FAIR	NO	ONE SIDED, OVERTOPPED BY ADJACENT TREES, MODERATELY SUPPRESSED
525	BIGLEAF MAPLE	ACER MACROPHYLLUM	18	20	GOOD	FAIR	YES	MODERATELY ONE SIDED
526	BIGLEAF MAPLE	ACER MACROPHYLLUM	10	16	FAIR	FAIR	NO	OVERTOPPED BY ADJACENT TREES, MODERATELY SUPPRESSED
527	WESTERN HEMLOCK	TSUGA HETEROPHYLLA	1	8	GOOD	FAIR	NO	ONE SIDED
528	DOUGLAS-FIR	PSEUDOTSUGA MENZIESII	21	18	GOOD	FAIR	YES	ONE SIDED, 60% LCR
529	DOUGLAS-FIR	PSEUDOTSUGA MENZIESII	44	30	GOOD	FAIR	YES	MODERATELY ONE SIDED
530	BIGLEAF MAPLE	ACER MACROPHYLLUM	11	8	POOR	POOR	NO	SUPPRESSED
531	BIGLEAF MAPLE	ACER MACROPHYLLUM	18	20	GOOD	FAIR	YES	ONE SIDED
532	WESTERN HEMLOCK	TSUGA HETEROPHYLLA	6	8	GOOD	FAIR	NO	ONE SIDED, OVERTOPPED BY ADJACENT TREES
533	WESTERN HEMLOCK	TSUGA HETEROPHYLLA	23	20	GOOD	FAIR	YES	ONE SIDED, PUSHING AGAINST ADJACENT TREE
534	DOUGLAS-FIR	PSEUDOTSUGA MENZIESII	31	20	GOOD	FAIR	YES	ONE SIDED, PUSHING AGAINST ADJACENT TREE
535	WESTERN HEMLOCK	TSUGA HETEROPHYLLA	1	8	GOOD	GOOD	NO	DEAD
536	BIGLEAF MAPLE	ACER MACROPHYLLUM	1	5	POOR	POOR	NO	OVERTOPPED BY ADJACENT TREES, SUPPRESSED
537	DOUGLAS-FIR	PSEUDOTSUGA MENZIESII	25	18	GOOD	FAIR	YES	ONE SIDED
538	DOUGLAS-FIR	PSEUDOTSUGA MENZIESII	43	25	GOOD	FAIR	YES	ONE SIDED
539	DOUGLAS-FIR	PSEUDOTSUGA MENZIESII	26	18	GOOD	FAIR	YES	40% LCR, MARGINAL TRUNK TAPER, CROWN EXTENSION SUPPRESSED BY ADJACENT TREES
540	WESTERN HEMLOCK	TSUGA HETEROPHYLLA	13	0	VERY POOR	VERY POOR	NO	25% SNAG
541	WESTERN HEMLOCK	TSUGA HETEROPHYLLA	31	25	GOOD	FAIR	YES	ONE SIDED
542	DOUGLAS-FIR	PSEUDOTSUGA MENZIESII	33	20	GOOD	FAIR	YES	ONE SIDED
543	WESTERN HEMLOCK	TSUGA HETEROPHYLLA	10	0	VERY POOR	VERY POOR	NO	DEAD
544	DOUGLAS-FIR	PSEUDOTSUGA MENZIESII	25	18	FAIR	POOR	NO	33% LCR, POOR TRUNK TAPER
545	DOUGLAS-FIR	PSEUDOTSUGA MENZIESII	21	15	GOOD	FAIR	YES	ONE SIDED, MARGINAL TRUNK TAPER
546	DOUGLAS-FIR	PSEUDOTSUGA MENZIESII	34	25	GOOD	FAIR	YES	40% LCR
547	DOUGLAS-FIR	PSEUDOTSUGA MENZIESII	10	10	GOOD	FAIR	YES	OVERTOPPED BY ADJACENT TREES, MODERATELY SUPPRESSED
548	BIGLEAF MAPLE	ACER MACROPHYLLUM	6	8	POOR	POOR	NO	SUPPRESSED, SIGNIFICANT LEAN, TOP FAILED
549	DOUGLAS-FIR	PSEUDOTSUGA MENZIESII	39	25	GOOD	FAIR	YES	MODERATELY ONE SIDED
550	DOUGLAS-FIR	PSEUDOTSUGA MENZIESII	11	0	VERY POOR	VERY POOR	NO	DEAD
551	WESTERN HEMLOCK	TSUGA HETEROPHYLLA	11	0	VERY POOR	VERY POOR	NO	DEAD
552	WESTERN HEMLOCK	TSUGA HETEROPHYLLA	10	0	VERY POOR	POOR	NO	EXTENSIVE DIEBACK
553	DOUGLAS-FIR	PSEUDOTSUGA MENZIESII	10	10	POOR	POOR	NO	OVERTOPPED BY ADJACENT TREES, SUPPRESSED
554	DOUGLAS-FIR	PSEUDOTSUGA MENZIESII	42	25	GOOD	FAIR	YES	ONE SIDED
555	DOUGLAS-FIR	PSEUDOTSUGA MENZIESII	25	18	FAIR	FAIR	NO	MODERATELY SUPPRESSED
556	DOUGLAS-FIR	PSEUDOTSUGA MENZIESII	29	20	GOOD	FAIR	YES	ONE SIDED
557	BIGLEAF MAPLE	ACER MACROPHYLLUM	9	8	POOR	POOR	NO	OVERTOPPED BY ADJACENT TREES, SUPPRESSED
558	BIGLEAF MAPLE	ACER MACROPHYLLUM	12	15	FAIR	FAIR	NO	ONE SIDED, BRANCH DIEBACK
559	DOUGLAS-FIR	PSEUDOTSUGA MENZIESII	29	15	FAIR	FAIR	NO	35% LCR, MARGINAL TRUNK TAPER
560	DOUGLAS-FIR	PSEUDOTSUGA MENZIESII	9	0	VERY POOR	VERY POOR	NO	DEAD 20' SNAG
561	DOUGLAS-FIR	PSEUDOTSUGA MENZIESII	11	12	FAIR	POOR	NO	ONE SIDED, POOR TRUNK TAPER, 25% LCR
562	DOUGLAS-FIR	PSEUDOTSUGA MENZIESII	18	18	FAIR	FAIR	NO	OVERTOPPED BY ADJACENT TREES, TWO DEAD LEADERS AT 12'
563	DOUGLAS-FIR	PSEUDOTSUGA MENZIESII	34	15	GOOD	FAIR	YES	ONE SIDED, 40% LCR, MARGINAL TRUNK TAPER
564	DOUGLAS-FIR	PSEUDOTSUGA MENZIESII	26	18	FAIR	FAIR	NO	MODERATELY SUPPRESSED, MARGINAL TRUNK TAPER, CROWN EXTENSION SUPPRESSED BY ADJACENT TREES
565	DOUGLAS-FIR	PSEUDOTSUGA MENZIESII	10	6	FAIR	FAIR	NO	MODERATELY SUPPRESSED, MARGINAL TRUNK TAPER, CROWN EXTENSION SUPPRESSED BY ADJACENT TREES
566	DOUGLAS-FIR	PSEUDOTSUGA MENZIESII	8	0	VERY POOR	VERY POOR	NO	DEAD 1' SNAG
567	DOUGLAS-FIR	PSEUDOTSUGA MENZIESII	24	8	FAIR	FAIR	NO	MODERATELY SUPPRESSED, MARGINAL TRUNK TAPER, CROWN EXTENSION SUPPRESSED BY ADJACENT TREES
568	DOUGLAS-FIR	PSEUDOTSUGA MENZIESII	25	18	GOOD	FAIR	YES	MARGINAL TRUNK TAPER, CROWN EXTENSION SUPPRESSED BY ADJACENT TREES
569	DOUGLAS-FIR	PSEUDOTSUGA MENZIESII	25	18	GOOD	FAIR	YES	MARGINAL TRUNK TAPER, CROWN EXTENSION SUPPRESSED BY ADJACENT TREES, 40% LCR
570	BIGLEAF MAPLE	ACER MACROPHYLLUM	10	10	POOR	POOR	NO	MODERATELY SUPPRESSED, TOP FAILED
571	DOUGLAS-FIR	PSEUDOTSUGA MENZIESII	13	20	GOOD	FAIR	YES	MODERATELY SUPPRESSED, MARGINAL TRUNK TAPER
572	DOUGLAS-FIR	PSEUDOTSUGA MENZIESII	29	20	GOOD	FAIR	YES	50% LCR, CROWN EXTENSION SUPPRESSED BY ADJACENT TREES
573	WESTERN HEMLOCK	TSUGA HETEROPHYLLA	10	8	POOR	POOR	NO	SUPPRESSED, SIGNIFICANT DIEBACK
574	WESTERN HEMLOCK	TSUGA HETEROPHYLLA	26	18	GOOD	FAIR	YES	MODERATELY ONE SIDED
575	BIGLEAF MAPLE	ACER MACROPHYLLUM	9	4	FAIR	FAIR	NO	MODERATELY SUPPRESSED
576	WESTERN HEMLOCK	TSUGA HETEROPHYLLA	23	0	VERY POOR	VERY POOR	NO	DEAD
577	BIGLEAF MAPLE	ACER MACROPHYLLUM	16	20	GOOD	FAIR	YES	ONE SIDED, 35% LCR
578	BIGLEAF MAPLE	ACER MACROPHYLLUM	16	20	GOOD	FAIR	YES	STEM FAILURE AND DECAY
579	BIGLEAF MAPLE	ACER MACROPHYLLUM	9	12	GOOD	FAIR	NO	ONE SIDED, MARGINAL TRUNK TAPER
580	BIGLEAF MAPLE	ACER MACROPHYLLUM	11	15	GOOD	FAIR	YES	ONE SIDED, MARGINAL TRUNK TAPER
581	BIGLEAF MAPLE	ACER MACROPHYLLUM	8	8	FAIR	FAIR	NO	OVERTOPPED BY ADJACENT TREES, MODERATELY SUPPRESSED, CODOMINANT AT 2' WITH INCLUDED BARK
582	BIGLEAF MAPLE	ACER MACROPHYLLUM	12	10	FAIR	FAIR	NO	ONE SIDED, MODERATELY SUPPRESSED
583	BIGLEAF MAPLE	ACER MACROPHYLLUM	11	10	FAIR	FAIR	NO	ONE SIDED, MODERATELY SUPPRESSED
584	BIGLEAF MAPLE	ACER MACROPHYLLUM	9	8	FAIR	FAIR	NO	ONE SIDED, MODERATELY SUPPRESSED
585	DOUGLAS-FIR	PSEUDOTSUGA MENZIESII	46	25	GOOD	FAIR	YES	ONE SIDED
586	DOUGLAS-FIR	PSEUDOTSUGA MENZIESII	45	20	GOOD	FAIR	YES	ONE SIDED, 50% LCR
587	DOUGLAS-FIR	PSEUDOTSUGA MENZIESII	44	25	GOOD	FAIR	YES	40% LCR
588	DOUGLAS-FIR	PSEUDOTSUGA MENZIESII	25	25	GOOD	FAIR	YES	40% LCR
589	DOUGLAS-FIR	PSEUDOTSUGA MENZIESII	51	25	GOOD	FAIR	YES	MODERATELY ONE SIDED
590	DOUGLAS-FIR	PSEUDOTSUGA MENZIESII	9	12	FAIR	FAIR	NO	ONE SIDED, OVERTOPPED BY ADJACENT TREES, MODERATELY SUPPRESSED
591	DOUGLAS-FIR	PSEUDOTSUGA MENZIESII	30	13	GOOD	FAIR	YES	MARGINAL TRUNK TAPER
592	DOUGLAS-FIR	PSEUDOTSUGA MENZIESII	14	15	GOOD	FAIR	YES	ONE SIDED, MARGINAL TRUNK TAPER
593	DOUGLAS-FIR	PSEUDOTSUGA MENZIESII	23	15	GOOD	FAIR	YES	ONE SIDED, KINKED LOWER TRUNK
594	DOUGLAS-FIR	PSEUDOTSUGA MENZIESII	15	12	GOOD	FAIR	YES	CROWN EXTENSION SUPPRESSED BY ADJACENT TREES, MARGINAL TRUNK TAPER
595	DOUGLAS-FIR	PSEUDOTSUGA MENZIESII	15	5	POOR	POOR	NO	OVERTOPPED BY ADJACENT TREES, SUPPRESSED
596	DOUGLAS-FIR	PSEUDOTSUGA MENZIESII	23	15	GOOD	FAIR	YES	MARGINAL TRUNK TAPER
597	DOUGLAS-FIR	PSEUDOTSUGA MENZIESII	23	15	GOOD	FAIR	YES	MARGINAL TRUNK TAPER
598	DOUGLAS-FIR	PSEUDOTSUGA MENZIESII	16	10	GOOD	FAIR	YES	MARGINAL TRUNK TAPER, 35% LCR
599	DOUGLAS-FIR	PSEUDOTSUGA MENZIESII	24	12	GOOD	FAIR	YES	MARGINAL TRUNK TAPER, 40% LCR
600	DOUGLAS-FIR	PSEUDOTSUGA MENZIESII	10	10	FAIR	FAIR	NO	ONE SIDED, LARGE SCAR AT LOWER TRUNK
601	DOUGLAS-FIR	PSEUDOTSUGA MENZIESII	16	15	GOOD	FAIR	YES	MODERATELY ONE SIDED, MARGINAL TRUNK TAPER
602	DOUGLAS-FIR	PSEUDOTSUGA MENZIESII	14	12	GOOD	FAIR	YES	ONE SIDED, MARGINAL TRUNK TAPER
603	BIGLEAF MAPLE	ACER MACROPHYLLUM	8	15	GOOD	FAIR	NO	OVERTOPPED BY ADJACENT TREES
604	DOUGLAS-FIR	PSEUDOTSUGA MENZIESII	14	12	GOOD	FAIR	YES	ONE SIDED, MARGINAL TRUNK TAPER
605	DOUGLAS-FIR	PSEUDOTSUGA MENZIESII	22	18	GOOD	FAIR	YES	MODERATELY ONE SIDED, MARGINAL TRUNK TAPER
606	DOUGLAS-FIR	PSEUDOTSUGA MENZIESII	14	14	GOOD	FAIR	YES	ONE SIDED, MARGINAL TRUNK TAPER
607	DOUGLAS-FIR	PSEUDOTSUGA MENZIESII	29	20	GOOD	FAIR	YES	ONE SIDED
608	DOUGLAS-FIR	PSEUDOTSUGA MENZIESII	19	18	GOOD	FAIR	YES	ONE SIDED, MARGINAL TRUNK TAPER
609	DOUGLAS-FIR	PSEUDOTSUGA MENZIESII	17	18	FAIR	FAIR	NO	MARGINAL TRUNK TAPER, MODERATELY SUPPRESSED
610	DOUGLAS-FIR	PSEUDOTSUGA MENZIESII	24	20	GOOD	FAIR	YES	ONE SIDED
611	DOUGLAS-FIR	PSEUDOTSUGA MENZIESII	26	18	FAIR	FAIR	NO	CODOMINANT AT 3' WITH INCLUDED BARK, MODERATELY SUPPRESSED
612	DOUGLAS-FIR	PSEUDOTSUGA MENZIESII	11	8	FAIR	FAIR	NO	MARGINAL TRUNK TAPER, MODERATELY SUPPRESSED
613	BIGLEAF MAPLE	ACER MACROPHYLLUM	9	22	GOOD	FAIR	NO	ONE SIDED
614	DOUGLAS-FIR	PSEUDOTSUGA MENZIESII	9	0	VERY POOR	VERY POOR	NO	DEAD
615	DOUGLAS-FIR	PSEUDOTSUGA MENZIESII	24	20	GOOD	FAIR	YES	ONE SIDED, MARGINAL TRUNK TAPER
616	DOUGLAS-FIR	PSEUDOTSUGA MENZIESII	16	15	GOOD	FAIR	YES	50% LCR, MARGINAL TRUNK TAPER
617	DOUGLAS-FIR	PSEUDOTSUGA MENZIESII	6	6	GOOD	FAIR	NO	ONE SIDED, MARGINAL TRUNK TAPER
618	DOUGLAS-FIR	PSEUDOTSUGA MENZIESII	6	6	GOOD	FAIR	NO	MODERATELY SUPPRESSED, OVERTOPPED BY ADJACENT TREES
619	BIGLEAF MAPLE	ACER MACROPHYLLUM	22	20	GOOD	FAIR	YES	CODOMINANT AT 2' WITH INCLUDED BARK, MODERATELY SUPPRESSED
620	DOUGLAS-FIR	PSEUDOTSUGA MENZIESII	19	15	GOOD	FAIR	YES	40% LCR, MARGINAL TRUNK TAPER
621	DOUGLAS-FIR	PSEUDOTSUGA MENZIESII	15	14	FAIR	POOR	NO	33% LCR, POOR TRUNK TAPER
622	DOUGLAS-FIR	PSEUDOTSUGA MENZIESII	19	4	FAIR	POOR	NO	1% LCR, POOR TRUNK TAPER
623	DOUGLAS-FIR	PSEUDOTSUGA MENZIESII	19	17	GOOD	FAIR	YES	40% LCR, MARGINAL TAPER
624	DOUGLAS-FIR	PSEUDOTSUGA MENZIESII	11	15	GOOD	FAIR	YES	40% LCR, MARGINAL TAPER, BOWED TRUNK
625	DOUGLAS-FIR	PSEUDOTSUGA MENZIESII	34	20	GOOD	FAIR	YES	MODERATELY ONE SIDED
626	DOUGLAS-FIR	PSEUDOTSUGA MENZIESII	19	15	GOOD	FAIR	YES	MARGINAL TRUNK TAPER, 40% LCR, PREVIOUS LEADER FAILURE AT 20'
627	DOUGLAS-FIR	PSEUDOTSUGA MENZIESII	13	18	GOOD	FAIR	YES	ONE SIDED
628	DOUGLAS-FIR	PSEUDOTSUGA MENZIESII	29	20	GOOD	FAIR	YES	MODERATELY ONE SIDED
629	DOUGLAS-FIR	PSEUDOTSUGA MENZIESII	21	20	GOOD	FAIR	YES	MODERATELY ONE SIDED
630	DOUGLAS-FIR	PSEUDOTSUGA MENZIESII	6	8	FAIR	FAIR	NO	OVERTOPPED BY ADJACENT TREES, MODERATELY SUPPRESSED
631	DOUGLAS-FIR	PSEUDOTSUGA MENZIESII	15	14	FAIR	FAIR	NO	EXTREME LEAN, OVERTOPPED BY ADJACENT TREES, MODERATELY SUPPRESSED
632	BIGLEAF MAPLE	ACER MACROPHYLLUM	6	15	FAIR	FAIR	NO	OVERTOPPED BY ADJACENT TREES, MODERATELY SUPPRESSED
633	WESTERN HEMLOCK	TSUGA HETEROPHYLLA	30	0	VERY POOR	VERY POOR	NO	DEAD
634	WESTERN HEMLOCK	TSUGA HETEROPHYLLA	44	20	GOOD	FAIR	YES	50% LCR
635	BIGLEAF MAPLE	ACER MACROPHYLLUM	14	15	GOOD	FAIR	YES	ONE SIDED, OVERTOPPED BY ADJACENT TREES
636	DOUGLAS-FIR	PSEUDOTSUGA MENZIESII	19	12	GOOD	FAIR	YES	ONE SIDED, MARGINAL TRUNK TAPER
637	DOUGLAS-FIR	PSEUDOTSUGA MENZIESII	28	2	FAIR	FAIR	NO	SIGNIFICANT LEAN, THIN CROWN
638	RED ALDER	ALNUS RUBRA	13	18	POOR	POOR	NO	SIGNIFICANT LEAN, SIGNIFICANT DECAY
639	RED ALDER	ALNUS RUBRA	6	1	FAIR	FAIR	NO	THIN CROWN
640	RED ALDER	ALNUS RUBRA	6	1	FAIR	FAIR	NO	THIN CROWN
641	RED ALDER	ALNUS RUBRA	6	5	FAIR	FAIR	NO	THIN CROWN, CODOMINANT AT 6'
642	WESTERN RED CEDAR	THUJA PLICATA	28	18	GOOD	GOOD	YES	GOOD
643	WESTERN RED CEDAR	THUJA PLICATA	1	1	GOOD	GOOD	NO	SUPPRESSED
644	DOUGLAS-FIR	PSEUDOTSUGA MENZIESII	6	6	POOR	POOR	NO	SUPPRESSED
645	DOUGLAS-FIR	PSEUDOTSUGA MENZIESII	52	25	GOOD	GOOD	YES	GOOD
646	BIGLEAF MAPLE	ACER MACROPHYLLUM	6	15	FAIR	FAIR	NO	EXTREME LEAN, OVERTOPPED BY ADJACENT TREES, MODERATELY SUPPRESSED
647	BIGLEAF MAPLE	ACER MACROPHYLLUM	6	15	FAIR	FAIR	NO	OVERTOPPED BY ADJACENT TREES, MODERATELY SUPPRESSED
648	WESTERN HEMLOCK	TSUGA HETEROPHYLLA	30	0	VERY POOR	VERY POOR	NO	DEAD
649	DOUGLAS-FIR	PSEUDOTSUGA MENZIESII	44	20	GOOD	FAIR	YES	50% LCR
650	BIGLEAF MAPLE	ACER MACROPHYLLUM	14	15	GOOD	FAIR	YES	ONE SIDED, OVERTOPPED BY ADJACENT TREES
651	DOUGLAS-FIR	PSEUDOTSUGA MENZIESII	19	12	GOOD	FAIR	YES	ONE SIDED, MARGINAL TRUNK TAPER
652	DOUGLAS-FIR	PSEUDOTSUGA MENZIESII	25	18	GOOD	FAIR	YES	ONE SIDED, MARGINAL TRUNK TAPER, BOWED TRUNK
653	DOUGLAS-FIR	PSEUDOTSUGA MENZIESII	19	12	GOOD	FAIR	YES	ONE SIDED, MARGINAL TRUNK TAPER
654	DOUGLAS-FIR	PSEUDOTSUGA MENZIESII	25	18	GOOD	FAIR	YES	ONE SIDED, MARGINAL TRUNK TAPER

TREE NO	COMMON NAME	SCIENTIFIC NAME	DBH	C-RAD	CONDITION	STRUCTURE	RETENTION OPTION	COMMENTS
118	BIGLEAF MAPLE	ACER MACROPHYLLUM	12	8	POOR	POOR	NO	TOP FAILED, SUPPRESSED
119	DOUGLAS-FIR	PSEUDOTSUGA MENZIESII	23	10	FAIR	FAIR	NO	ONE SIDED, MARGINAL TRUNK TAPER, KINKED TRUNK, MODERATELY SUPPRESSED
120	DOUGLAS-FIR	PSEUDOTSUGA MENZIESII	9					



**TREE RETENTION ANALYSIS**

- 1) THERE ARE 333 TREES THAT MEET TREE RETENTION REQUIREMENT.
- 2) THERE ARE 414 TREES THAT DON'T MEET TREE RETENTION REQUIREMENT.
- 3) THERE ARE 38 TREES TO BE SAVED THAT MEET TREE RETENTION REQUIREMENT.
- 4) THERE WILL BE 109 TREES REMOVED

PER CODE SECTION 17.102.50 A-1 "AT LEAST THREE TREES 11 INCHES DBH OR GREATER ARE TO BE RETAINED FOR EVERY ONE-ACRE OF CONTIGUOUS OWNERSHIP". THERE IS 12.139 ACRES (12.139 X 3 = 38.21). SO A MINIMUM OF 38 TREES NEED TO BE RETAINED. AS DEMONSTRATED ABOVE, 38 TREES WILL BE RETAINED MEETING THIS CODE REQUIREMENT.

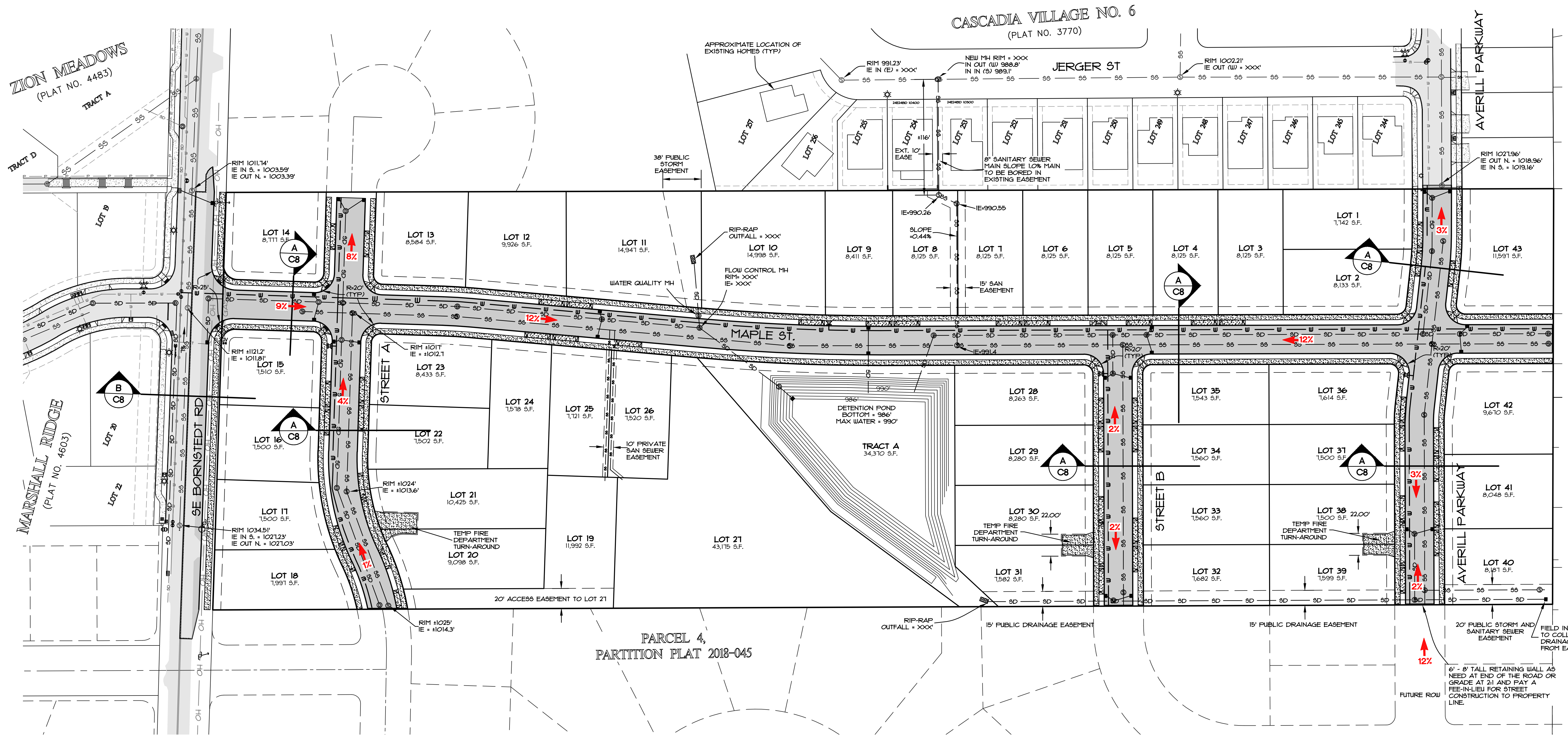
DATE	NO.	REVISION	BY
DESIGNED: RLM			SHEET <b>C7</b> OF <b>10</b>
DRAWN: RLM			
CHECKED: DLH			
APPROVED: RLM			

SCALE	VERT. N/A	HORIZ. 1" = 50'
DATE:	4-25-22	
FILE:	19-268 - Planning.dwg	
SECTION	TWP.	RANGE
24	2S	4E

PROJECT: **THE BORNSTEDT VIEWS**  
**TREE RETENTION AND PROTECTION PLAN**  
 LOCATION: **19618 BORNSTEDT ROAD, SANDY, OR**

**Surveyors & Planners, Inc.**  
 Surveying, Planning and  
 Civil Engineering  
 P.O. Box 925, Sandy, OR 97055  
 Phone: (503) 668-4730  
 Fax: (503) 668-4730  
 DATE OF PLOT: 4/25/22

CLIENT:  
**EVEN BETTER HOMES, INC.**  
 MAC EVEN  
 PO BOX 2021  
 GRESHAM, OR 97030  
 PHONE: (503) 348-5602  
 EMAIL: mocc@evenbetterhomes.com

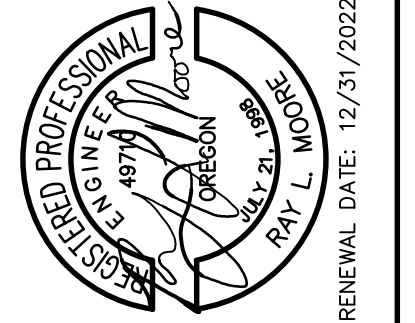


ZION MEADOWS  
(PLAT NO. 4483)  
TRACT A

CASCADIA VILLAGE NO. 6  
(PLAT NO. 3770)

MARSHALL RIDGE  
(PLAT NO. 4603)

BY	REVISION	SHEET
DATE	NO.	8
NO.	OF	10
DESIGNED: RLM	DRAWN: RLM	CHECKED: DLH
APPROVED: RLM		



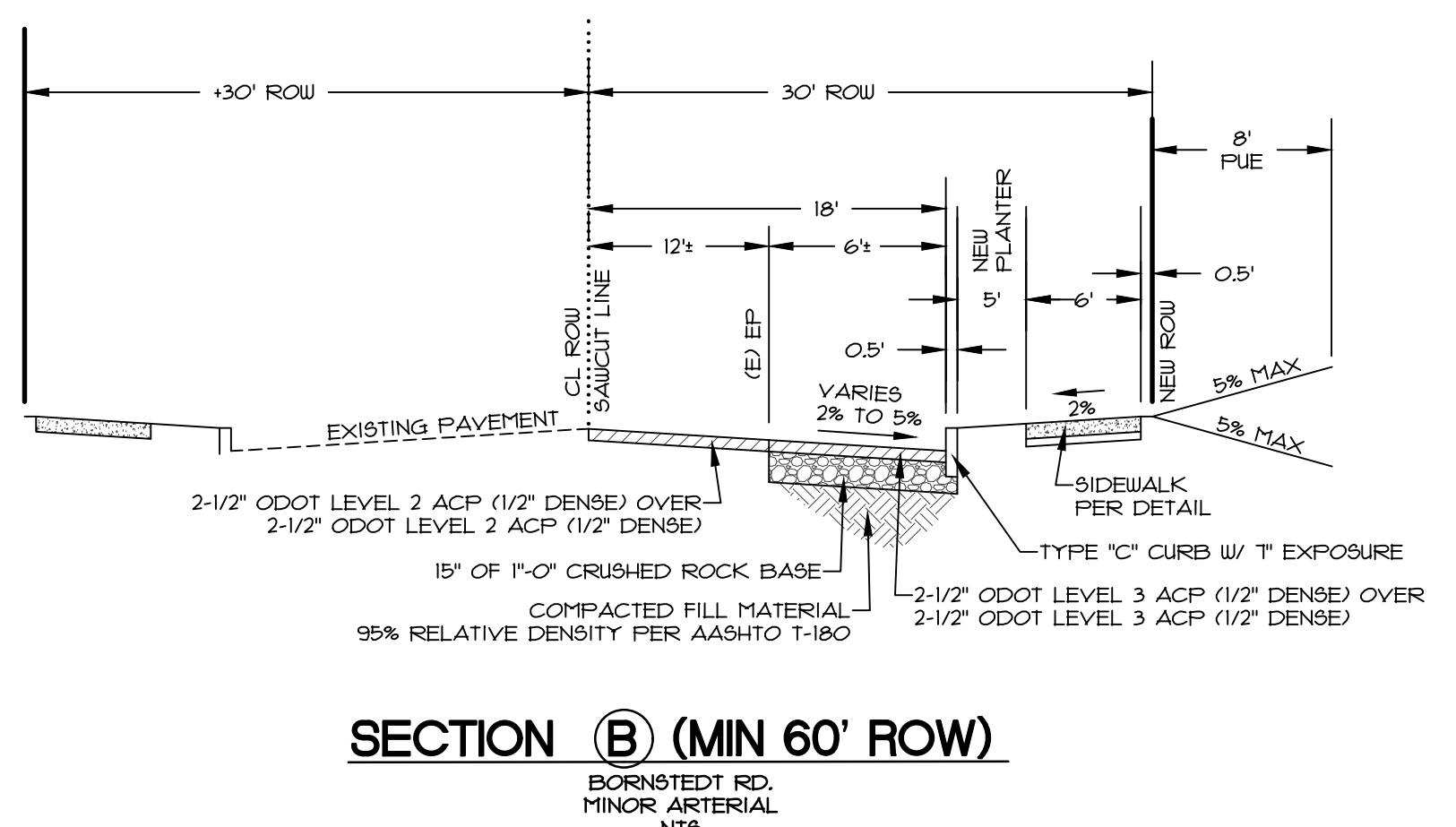
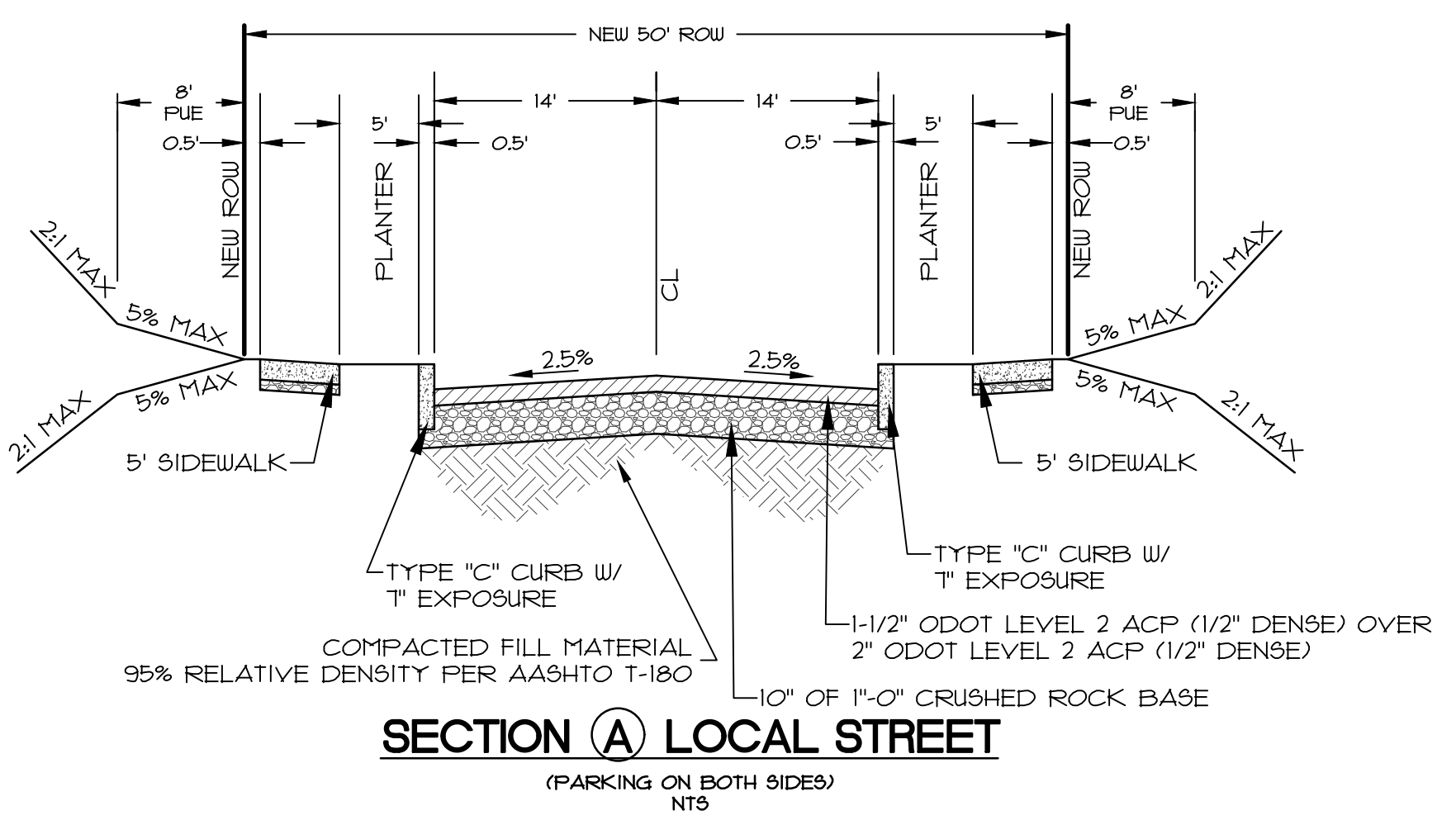
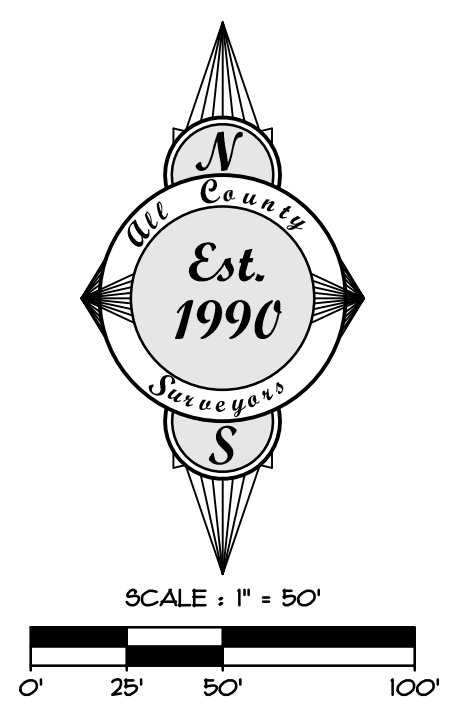
SCALE	VERT. N/A	HORIZ. 1" = 50'
DATE	4-25-22	FILE: 19-266 - Planning.dwg
SECTION	TWP. 24	RANGE 2S
LEGAL	SECTION 24	4E

PROJECT: **THE BORNSTEDT VIEWS**  
STREET AND UTILITY PLAN

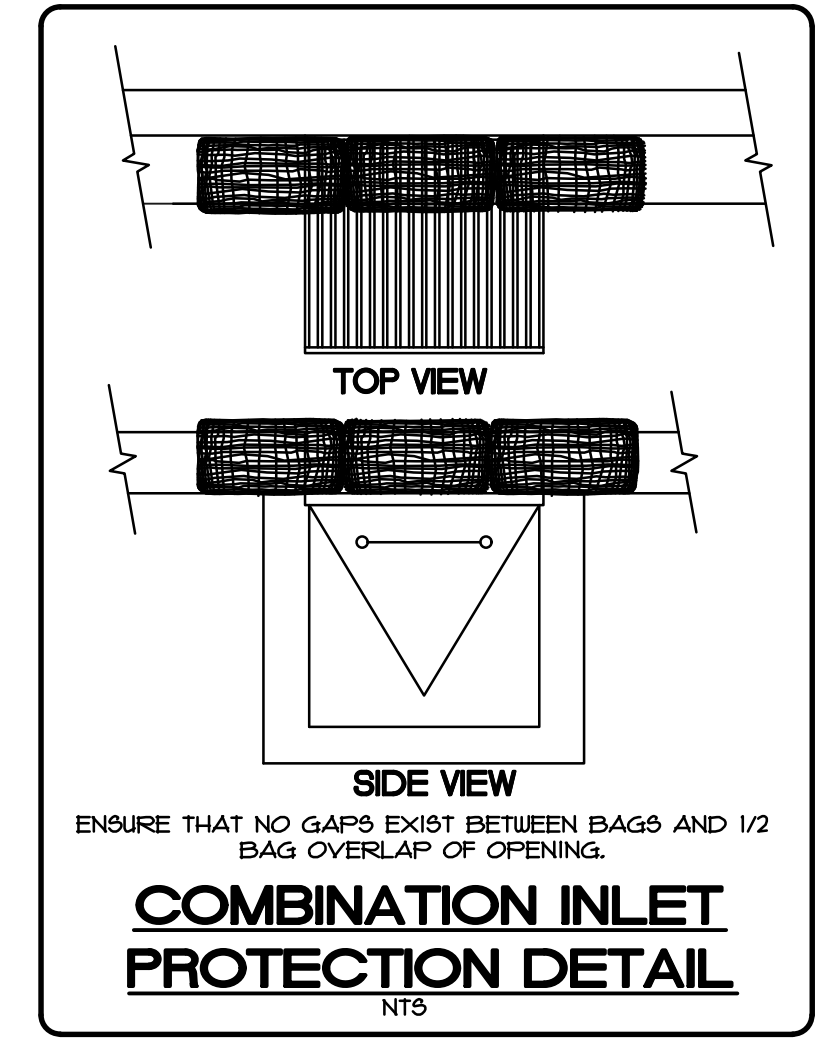
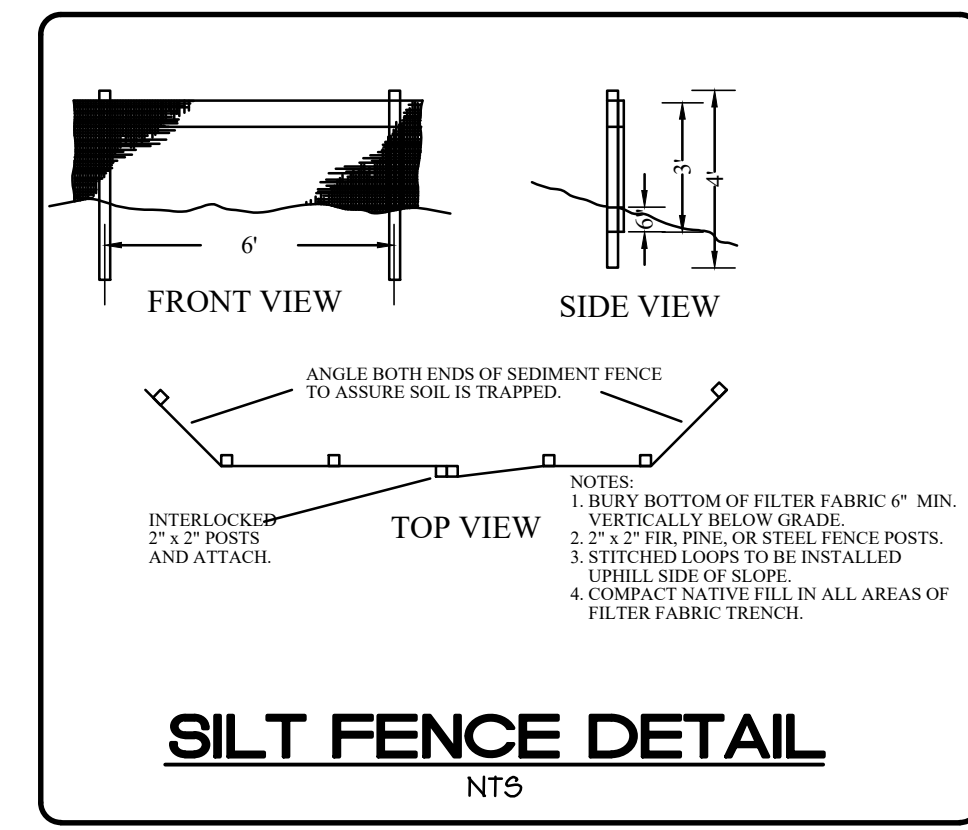
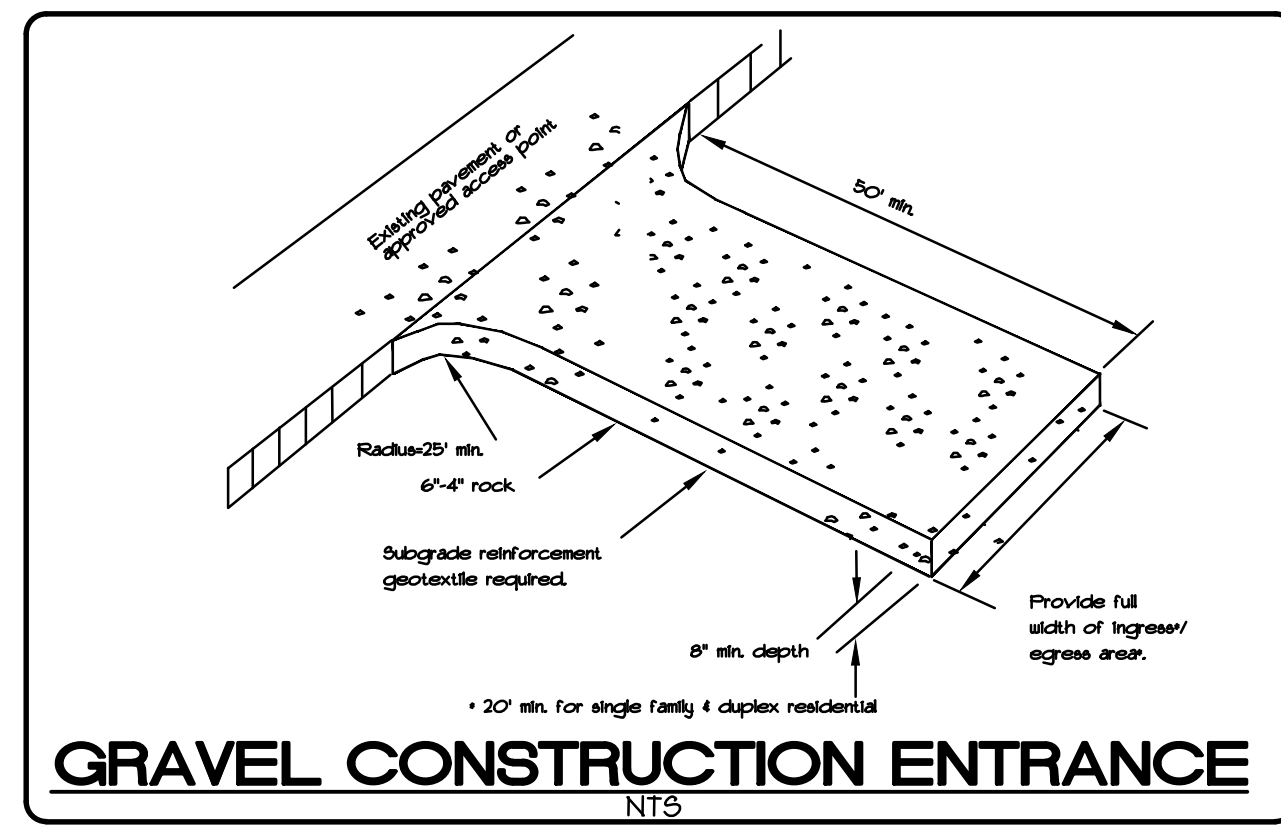
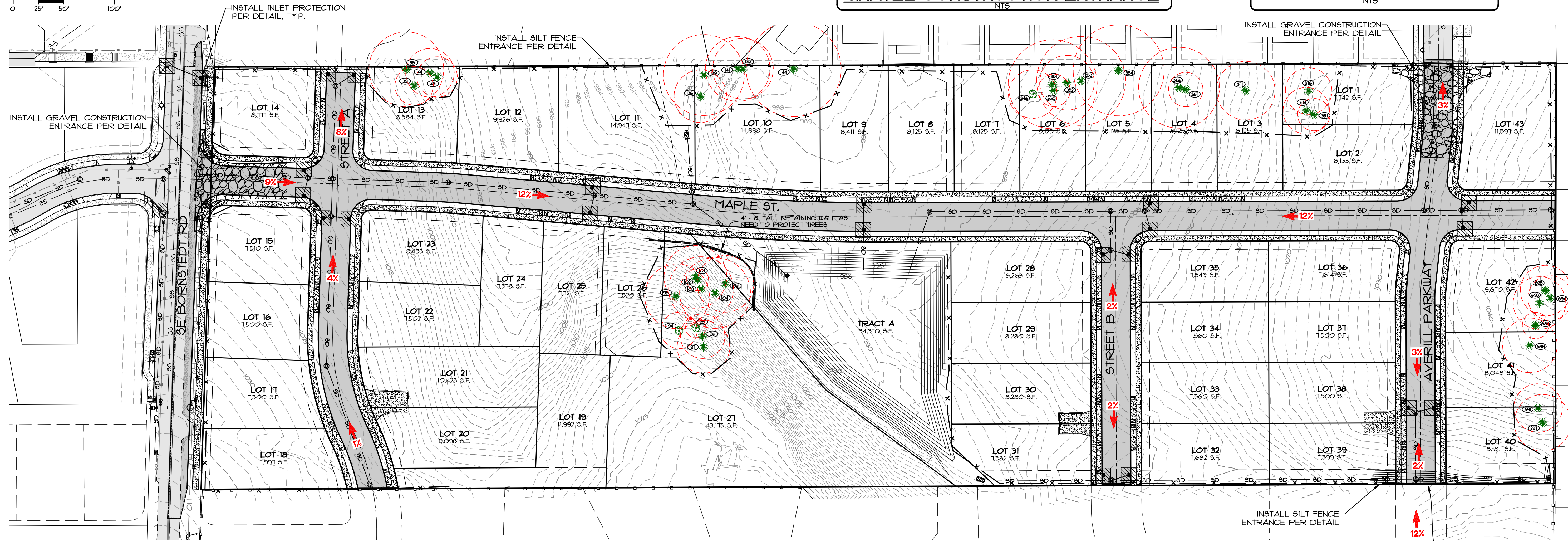
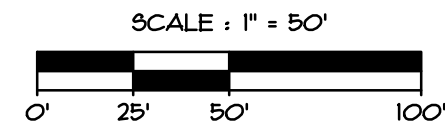
LOCATION: **19618 BORNSTEDT ROAD, SANDY, OR**

**Surveyors & Planners, Inc.**  
Surveying, Planning and  
Civil Engineering  
P.O. Box 955, Sandy, OR 97055  
Phone: (503) 668-4730  
Fax: (503) 668-4730

CLIENT: **EVEN BETTER HOMES, INC.**  
MAC EVEN  
PO BOX 2021  
GRESHAM, OR 97030  
PHONE: (503) 348-5602  
EMAIL: mcco@evenbetterhomes.com







**LEGEND**

	PROPOSED INLET PROTECTION
	INSTALL SEDIMENT FENCE
	EXISTING GROUND CONTOUR
	PROPOSED FINISH GRADE CONTOUR

**EROSION CONTROL NOTES:**

OWNER OR DESIGNATED PERSON SHALL BE RESPONSIBLE FOR PROPER INSTALLATION AND MAINTENANCE OF ALL EROSION AND SEDIMENT CONTROL MEASURES, IN ACCORDANCE WITH LOCAL, STATE, AND FEDERAL REGULATIONS.

THE IMPLEMENTATION OF THESE ESC PLANS AND CONSTRUCTION MAINTENANCE, REPLACEMENT AND UPGRADING OF THESE ESC FACILITIES IS THE RESPONSIBILITY OF THE CONTRACTOR UNTIL ALL CONSTRUCTION IS COMPLETED AND APPROVED BY THE LOCAL JURISDICTION, AND VEGETATION/LANDSCAPING IS ESTABLISHED. THE DEVELOPER SHALL BE RESPONSIBLE FOR MAINTENANCE AFTER THE PROJECT IS APPROVED UNTIL THE LOTS ARE SOLD.

THE BOUNDARIES OF THE CLEARING LIMITS SHOWN ON THIS PLAN SHALL BE CLEARLY MARKED IN THE FIELD PRIOR TO CONSTRUCTION. DURING THE CONSTRUCTION PERIOD, NO DISTURBANCE BEYOND THE CLEARING LIMITS SHALL BE PERMITTED. THE MARKINGS SHALL BE MAINTAINED BY THE APPLICANT/CONTRACTOR FOR THE DURATION OF CONSTRUCTION.

THE ESC FACILITIES SHOWN ON THIS PLAN MUST BE CONSTRUCTED IN CONJUNCTION WITH ALL CLEARING AND GRADING ACTIVITIES, AND IN SUCH A MANNER AS TO INSURE THAT SEDIMENT AND SEDIMENT LADEN WATER DOES NOT ENTER THE DRAINAGE SYSTEM, ROADWAYS, OR VIOLATE APPLICABLE WATER STANDARDS.

THE ESC FACILITIES SHOWN ON THIS PLAN ARE MINIMUM REQUIREMENTS FOR ANTICIPATED SITE CONDITIONS. DURING CONSTRUCTION PERIOD, THESE ESC FACILITIES SHALL BE UPGRADED AS NEEDED FOR UNEXPECTED STORM EVENTS AND TO ENSURE THAT SEDIMENT AND SEDIMENT LADEN WATER DOES NOT LEAVE THE SITE.

ALL ADJACENT STREETS SHALL BE KEPT FROM DEBRIS, DIRT AND ROCK AT ALL TIMES. USE ROCK ENTRANCE FROM ENTERING AND LEAVING THE SITE. ANY DIRT OR DEBRIS LEAVING THE SITE SHALL BE CLEANED UP IMMEDIATELY.

AN EROSION CONTROL INSPECTION IS REQUIRED BEFORE ANY GROUND DISTURBING ACTIVITY IS COMMENCED ON-SITE. ALSO, THE ESC FACILITIES SHALL BE INSPECTED DAILY BY THE APPLICANT/CONTRACTOR AND MAINTAINED AS NECESSARY TO ENSURE THEIR CONTINUED FUNCTIONING.

STABILIZED GRAVEL ENTRANCES SHALL BE INSTALLED AT THE BEGINNING OF CONSTRUCTION AND MAINTAINED FOR THE DURATION OF THE PROJECT. ADDITIONAL MEASURES MAY BE REQUIRED TO INSURE THAT ALL PAVED AREAS ARE KEPT CLEAN FOR THE DURATION OF THE PROJECT.

STORM INLETS, BASINS, AND AREA DRAINS SHALL BE PROTECTED UNTIL PAVEMENT SURFACES ARE COMPLETED AND/OR VEGETATION IS RE-ESTABLISHED.

PAVEMENT SURFACES AND VEGETATION ARE TO BE PLACED AS RAPIDLY AS POSSIBLE.

SEEDING SHALL BE PERFORMED NO LATER THAN SEPTEMBER 1 FOR EACH PHASE OF CONSTRUCTION.

IF THERE ARE EXPOSED SOILS OR SOILS NOT FULLY ESTABLISHED FROM OCTOBER 1ST THROUGH APRIL 30TH, THE WET WEATHER EROSION PREVENTION MEASURES WILL BE IN EFFECT. SEE THE EROSION PREVENTION AND SEDIMENT CONTROL PLANNING AND DESIGN MANUAL (CHAPTER 4) FOR REQUIREMENTS.

THE DEVELOPER SHALL REMOVE ESC MEASURES WHEN VEGETATION IS FULLY ESTABLISHED.

BY	REVISION	SHEET
DATE	NO.	OF 10
DESIGNED: RLM	DRAWN: RLM	CHECKED: DLH
APPROVED: RLM		

SCALE	VERT. N/A	HORIZ. 1" = 50'
DATE:	4-25-22	
FILE:	19-268 - Planning.dwg	
SECTION	TWP. 24	RANGE 4E

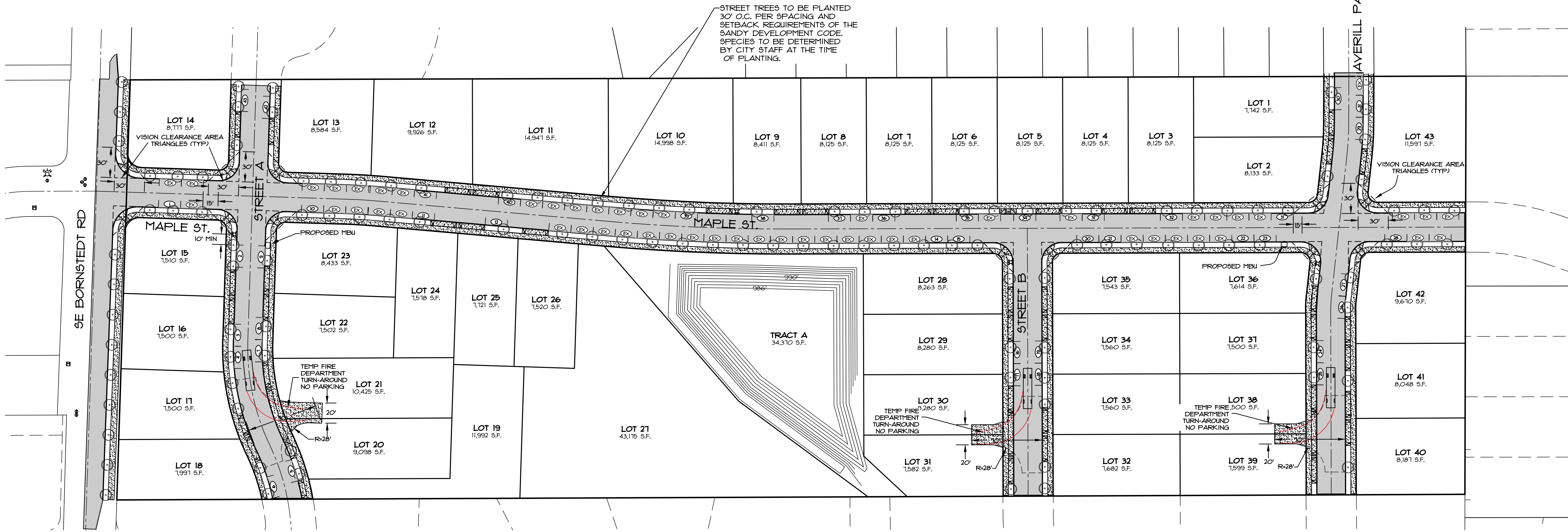
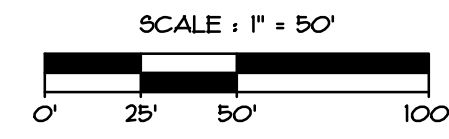
**THE BORNSTEDT VIEWS**  
**GRADING AND EROSION CONTROL PLAN**

PROJECT LOCATION: **19618 BORNSTEDT ROAD, SANDY, OR**

**Surveyors & Planners, Inc.**  
 Surveying, Planning and Civil Engineering  
 P.O. Box 925, Sandy, OR 97055  
 Phone: (503) 668-4751  
 Fax: (503) 668-4720

CLIENT: **EVEN BETTER HOMES, INC.**  
 MAC EVEN  
 PO BOX 2021  
 GRESHAM, OR 97030  
 PHONE: (503) 348-5602  
 EMAIL: mocc@evenbetterhomes.com

DATE OF PLOT: 4-25-22



STREET TREES TO BE PLANTED 30' O.C. PER SPACING AND SETBACK REQUIREMENTS OF THE SANDY DEVELOPMENT CODE. SPECIES TO BE DETERMINED BY CITY STAFF AT THE TIME OF PLANTING.

DATE	NO.	REVISION	BY
7-26-21	1	ADDED FIRE TURN TEMPLATE	RLM

DESIGNED:	RLM
DRAWN:	RLM
CHECKED:	DLH
APPROVED:	RLM

SHEET	C10
OF	10

RENEWAL DATE:	12/31/2022
---------------	------------

SCALE	VERT. N/A
HORIZ. 1" = 50'	
DATE:	4-25-22
FILE:	19-268 - Planning.dwg

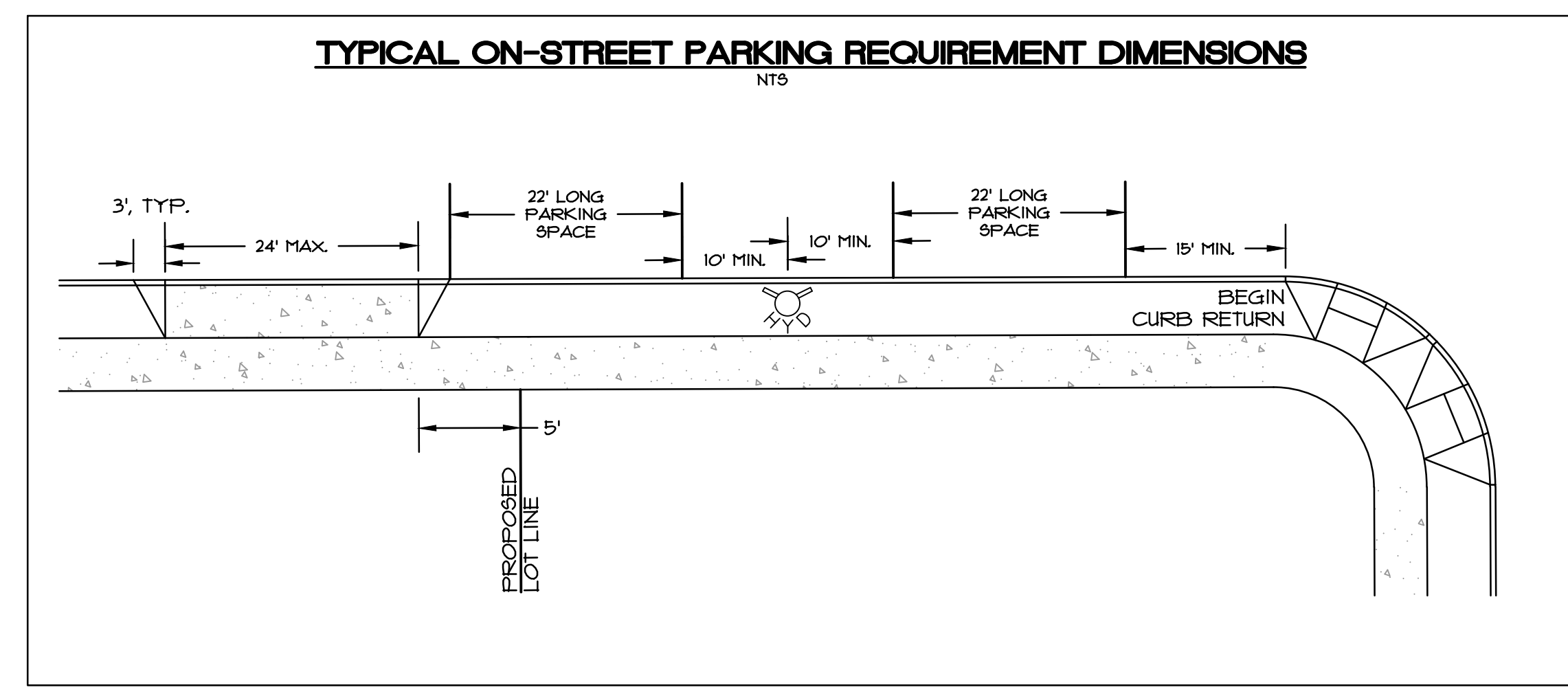
LEGAL	
SECTION	TWP. RANGE
	24 2S 4E

PROJECT: **THE BORNSTEDT VIEWS ON-STREET PARKING PLAN**

LOCATION: **19618 BORNSTEDT ROAD, SANDY, OR**

**Surveyors & Planners, Inc.**  
 Surveying, Planning and Civil Engineering  
 P.O. Box 955, Sandy, OR 97055  
 Phone: (503) 668-4731  
 Fax: (503) 668-4730

CLIENT: **EVEN BETTER HOMES, INC.**  
 MAC EVEN  
 PO BOX 2021  
 CRESHAM, OR 97030  
 PHONE: (503) 348-5602  
 EMAIL: [mcc@evenbetterhomes.com](mailto:mcc@evenbetterhomes.com)



- LEGEND**
- SUBJECT PROPERTY BOUNDARY LINE
  - PROPOSED LOT LINE
  - PROPOSED CURB AND PAVEMENT
  - PROPOSED SIDEWALK
  - PROPOSED UNSTRIPED 22' LONG ON-STREET PARKING SPACE
  - (1) PARKING SPACE NUMBER CORRESPONDING TO LOT NUMBER (EACH SPACE IS WITHIN 300' OF EACH DWELLING)
  - (2) PARKING SPACE THAT EXCEEDS THE REQUIREMENT
  - ★ PROPOSED FIRE HYDRANT
  - PROPOSED MBU

TOTAL ON-STREET PARKING SPACES PROPOSED = 91  
 MINIMUM REQUIRED = 43