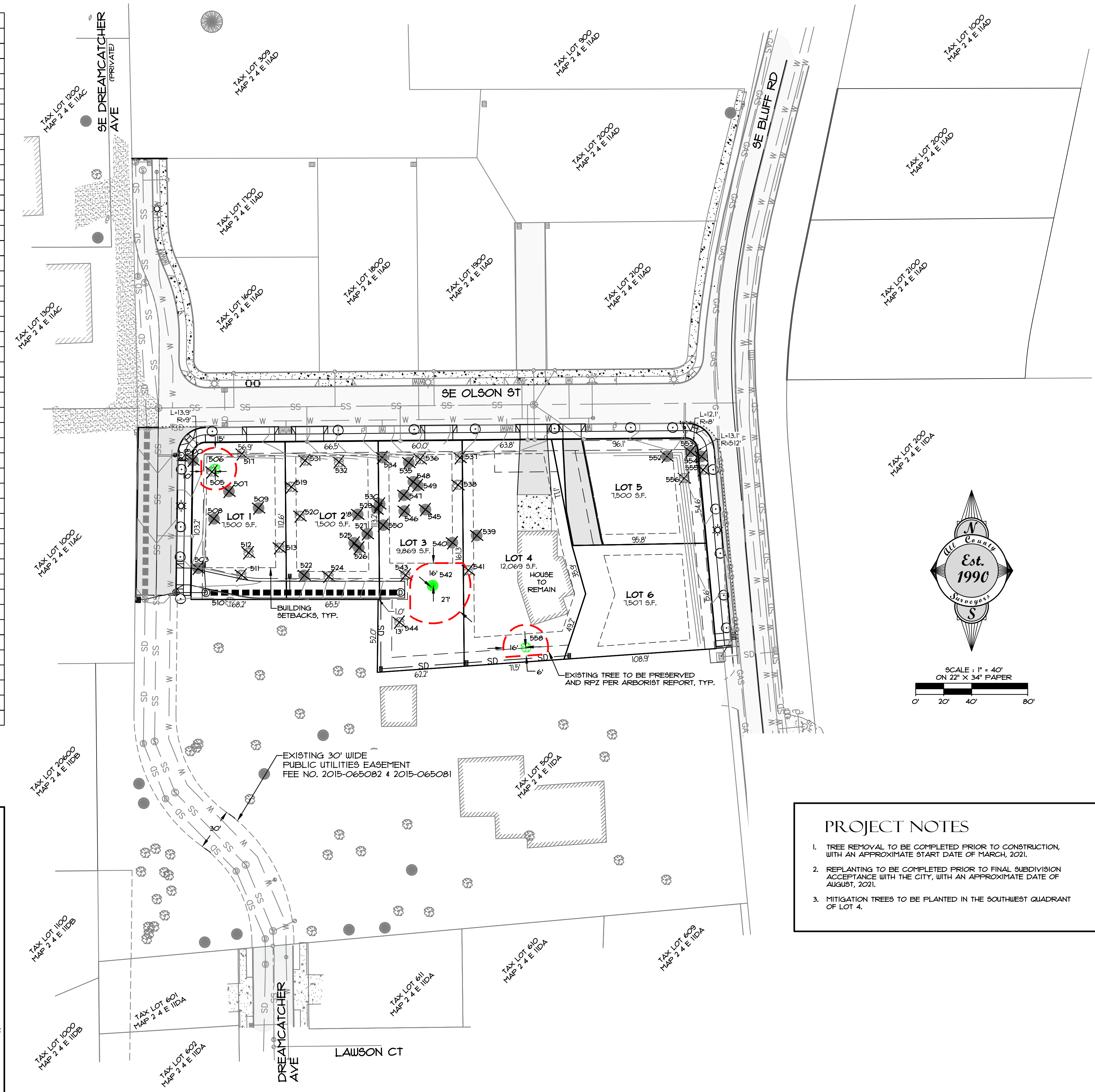
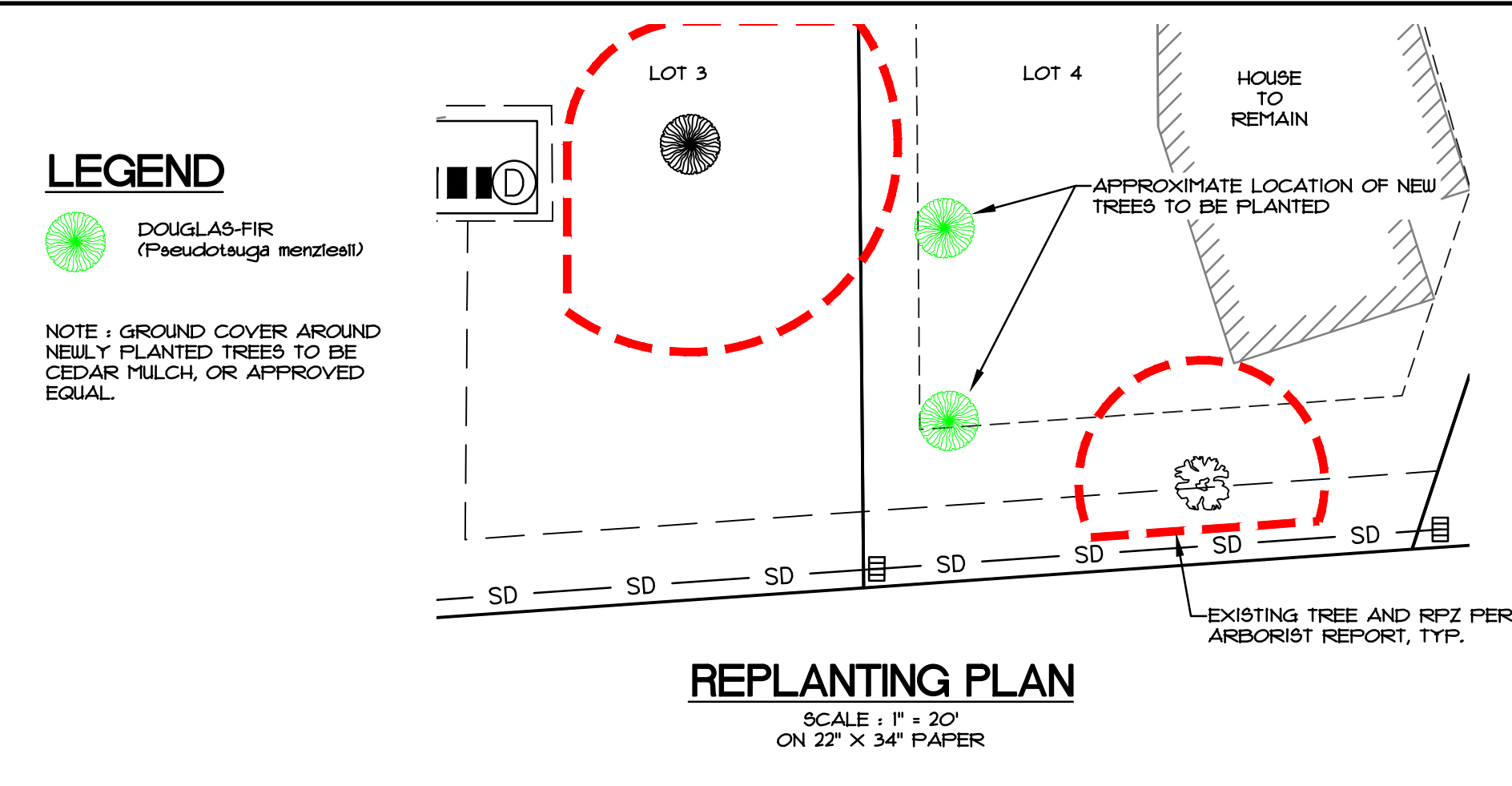


TREE INVENTORY

ID	COMMON NAME	BOTANIC NAME	DBH(1)	CONDITION(2)	TREATMENT	COMMENTS/RPZ(3)
500	Douglas-fir	Pseudotsuga menziesii	36	Fair	Remove	
503	Western Red-Cedar	Thuja plicata	36	HAZARD	Remove	
505	Sweet Cherry	Prunus avium	16	Fair	Remove	Nuisance Tree Species
506	Bigleaf Maple	Acer macrophyllum	18	Fair	Retain	15' North, South & East, 10' West
507	Douglas-fir	Pseudotsuga menziesii	39	Fair	Remove	
508	Douglas-fir	Pseudotsuga menziesii	42	Poor	Remove	
509	Douglas-fir	Pseudotsuga menziesii	36	Poor	Remove	
510	Bigleaf Maple	Acer macrophyllum	22	Fair	Remove	
511	Bigleaf Maple	Acer macrophyllum	44	Fair	Remove	
512	Bigleaf Maple	Acer macrophyllum	12	Poor	Remove	
513	Bigleaf Maple	Acer macrophyllum	13	Poor	Remove	
517	Bigleaf Maple	Acer macrophyllum	24	Poor	Remove	
519	Bigleaf Maple	Acer macrophyllum	47	HAZARD	Remove	
520	Sweet Cherry	Prunus avium	22	HAZARD	Remove	
522	Douglas-fir	Pseudotsuga menziesii	36	Fair	Remove	
524	Bigleaf Maple	Acer macrophyllum	28	Fair	Remove	
525	Western Red-Cedar	Thuja plicata	28	Fair	Remove	
526	Douglas-fir	Pseudotsuga menziesii	40	Fair	Remove	
527	Douglas-fir	Pseudotsuga menziesii	29	Fair	Remove	
528	Douglas-fir	Pseudotsuga menziesii	31	Fair	Remove	
529	Douglas-fir	Pseudotsuga menziesii	55	Fair	Remove	
531	Bigleaf Maple	Acer macrophyllum	37	Poor	Remove	
532	Bigleaf Maple	Acer macrophyllum	18	Poor	Remove	
534	Douglas-fir	Pseudotsuga menziesii	36	Fair	Remove	
535	Douglas-fir	Pseudotsuga menziesii	47	Fair	Remove	
536	Sweet Cherry	Prunus avium	12	Poor	Remove	Nuisance Tree Species
537	Bigleaf Maple	Acer macrophyllum	36	Fair	Remove	
538	Bigleaf Maple	Acer macrophyllum	54	Poor	Remove	
539	Grand Fir	Abies grandis	42	Fair	Remove	
540	Douglas-fir	Pseudotsuga menziesii	31	HAZARD	Remove	
541	Apple	Malus sp.	13	Poor	Remove	
542	Western Red-Cedar	Thuja plicata	36	Fair	Retain	27' South & East, 16' North & West
543	Bigleaf Maple	Acer macrophyllum	45	Fair	Remove	
544	Sweet Cherry	Prunus avium	18	Fair	Remove	Nuisance Tree Species
545	Douglas-fir	Pseudotsuga menziesii	31	Fair	Remove	
546	Douglas-fir	Pseudotsuga menziesii	31	Fair	Remove	
547	Douglas-fir	Pseudotsuga menziesii	24	Fair	Remove	
548	Douglas-fir	Pseudotsuga menziesii	27	Fair	Remove	
549	Douglas-fir	Pseudotsuga menziesii	20	Fair	Remove	
550	Douglas-fir	Pseudotsuga menziesii	34	Fair	Remove	
552	Western Red-Cedar	Thuja plicata	31	Poor	Remove	
553	Deodar Cedar	Cedrus deodara	38	Fair	Remove	
554	Deodar Cedar	Cedrus deodara	22	Dying	Remove	
555	Cherry Plum	Prunus cerasifera	14	Poor	Remove	
556	Magnolia	Magnolia sp.	18	Poor	Remove	
558	Pear	Pyrus sp.	16	Fair	Retain	16' North, West & East, 6' South

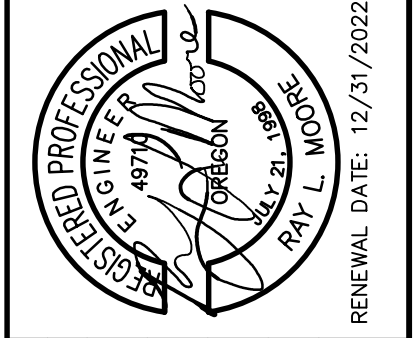
(1) DBH: DIAMETER-AT-BREAST-HEIGHT - MEASURED AT 4.5 FEET ABOVE NATURAL GRADE
 (2) CONDITION: GOOD, FAIR, POOR, DEAD
 (3) RPZ: ROOT PROTECTION ZONE MEASURED IN FEET IN RADIUS FROM TREE TRUNK
 NOTE: THE ABOVE INVENTORY WAS COMPLETED BY TREE CARE & LANDSCAPE UNLIMITED PER DOCUMENT DATED FEBRUARY 1, 2006, AND WAS UPDATED BY MARY GIERSCHE CONSULTING ON JANUARY 28, 2021.



PROJECT NOTES

- TREE REMOVAL TO BE COMPLETED PRIOR TO CONSTRUCTION, WITH AN APPROXIMATE START DATE OF MARCH, 2021.
- REPLANTING TO BE COMPLETED PRIOR TO FINAL SUBDIVISION ACCEPTANCE WITH THE CITY, WITH AN APPROXIMATE DATE OF AUGUST, 2021.
- MITIGATION TREES TO BE PLANTED IN THE SOUTHWEST QUADRANT OF LOT 4.

BY	REVISION	DATE	NO.



SCALE	VERT.	HORIZ.	DATE	FILE
N/A	1" = 40'	1" = 40'	02/15/2021	T1-020 TREES.dwg

MAIRIN'S VIEWPOINT
 TREE PRESERVATION EXHIBIT

PROJECT: 15545 SE BLUFF RD, SANDY, OR 97055

Surveyors & Planners, Inc.
 Surveying, Planning and Civil Engineering
 P.O. Box 955 Sandy, OR 97055
 Phone: (503) 668-3151
 Fax: (503) 668-4730

DATE OF PLOT: 02/15/2021

JOHN MAHAFFY
 JOHN MAHAFFY
 13100 SE SUNNYSIDE RD
 SUITE B
 CLACKAMAS, OR 97015

SHEET	1
OF	1
DESIGNED:	CTH / RLM
DRAWN:	CTH
CHECKED:	RLM
APPROVED:	RLM
RENEWAL DATE:	12/31/2022