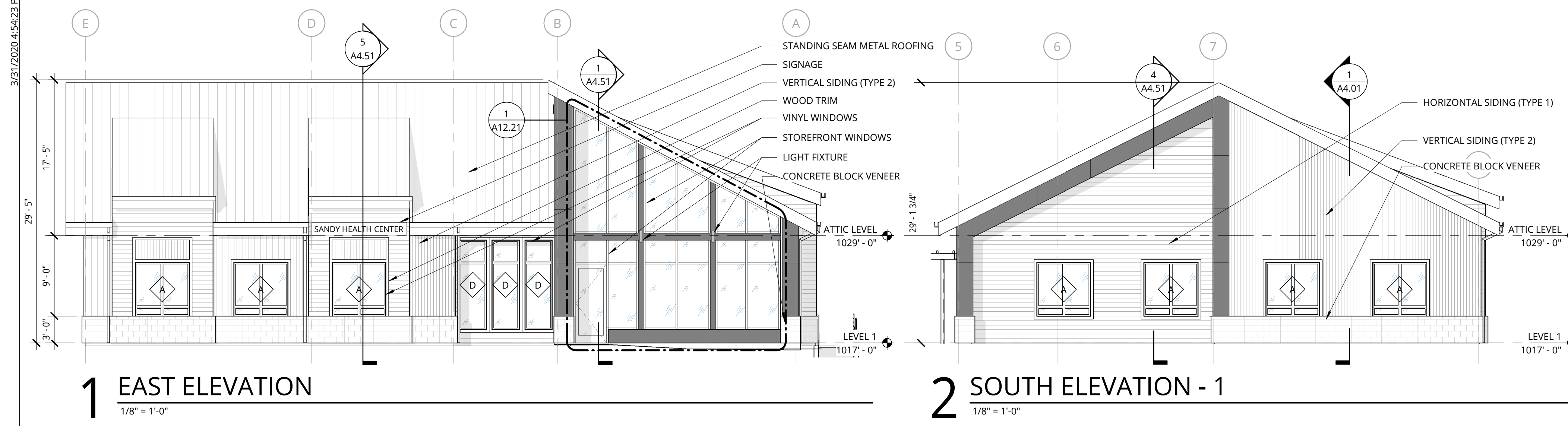


3/31/2020 4:54:23 PM



1 EAST ELEVATION
1/8" = 1'-0"

2 SOUTH ELEVATION - 1
1/8" = 1'-0"

GENERAL NOTES - EXTERIOR ELEVATIONS

1. REFER TO SHEET A0.01 FOR 'PROJECT NOTES' APPLICABLE TO ALL PORTIONS OF THE WORK.
2. ELEVATIONS NOTED ARE RELATIVE TO SEA LEVEL (OR PROJECT DATUM).
3. SEE SHEET A12.21 FOR WINDOW SCHEDULE.
4. SEE DOOR SCHEDULE SHEET A12.01 FOR DOOR LOCATIONS AND TYPES.
5. SEE WALL SECTIONS FOR ADDITIONAL EXTERIOR DETAILS.
6. REFER TO A0.11 FOR EXTERIOR WALL TYPES

EXTERIOR ELEVATIONS LEGEND

ENCLOSING ELEMENTS

HORIZONTAL WOOD PLANK FIBER CEMENT (TYPE 1)
COLOR: REDWOOD

VERTICAL RIBBED FIBER CEMENT (TYPE 2)
COLOR: WEATHERED COPPER

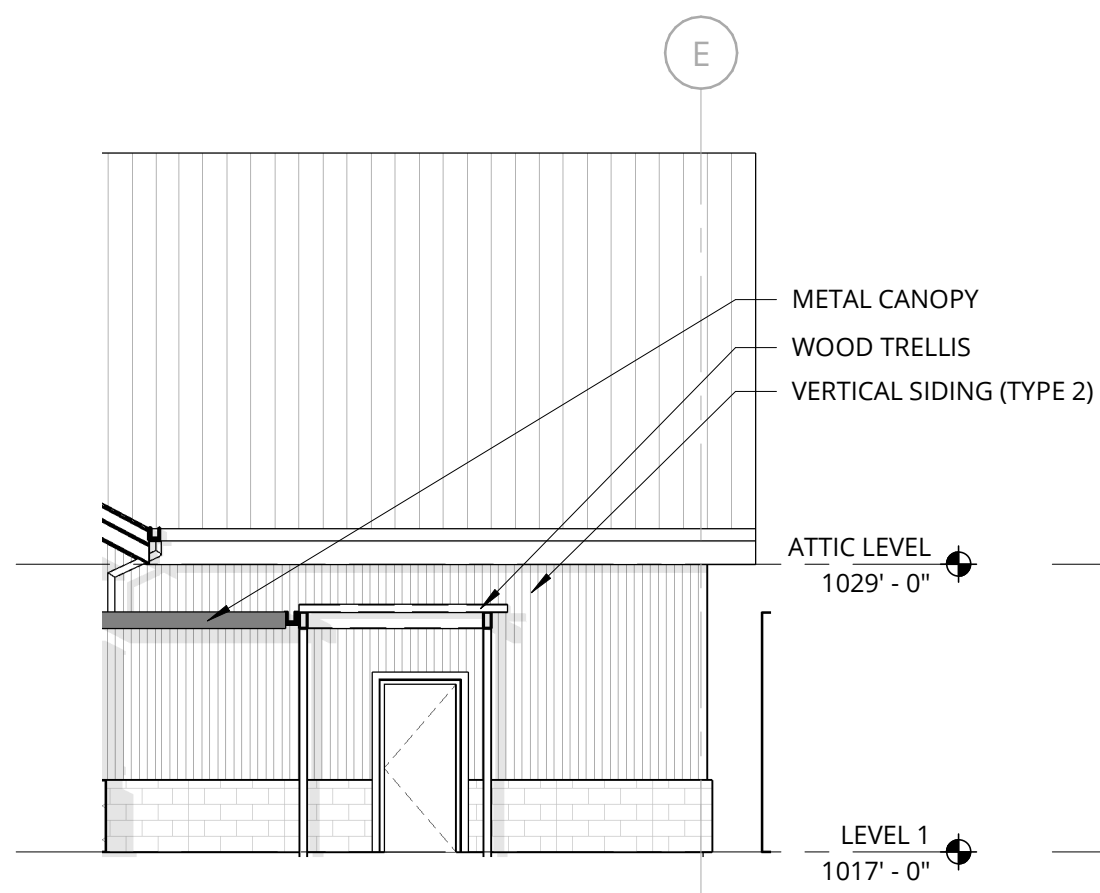
CONCRETE BLOCK VENEER
COLOR: EBONY M

STANDING SEAM METAL ROOF PANELS
COLOR: OLD TOWN GRAY

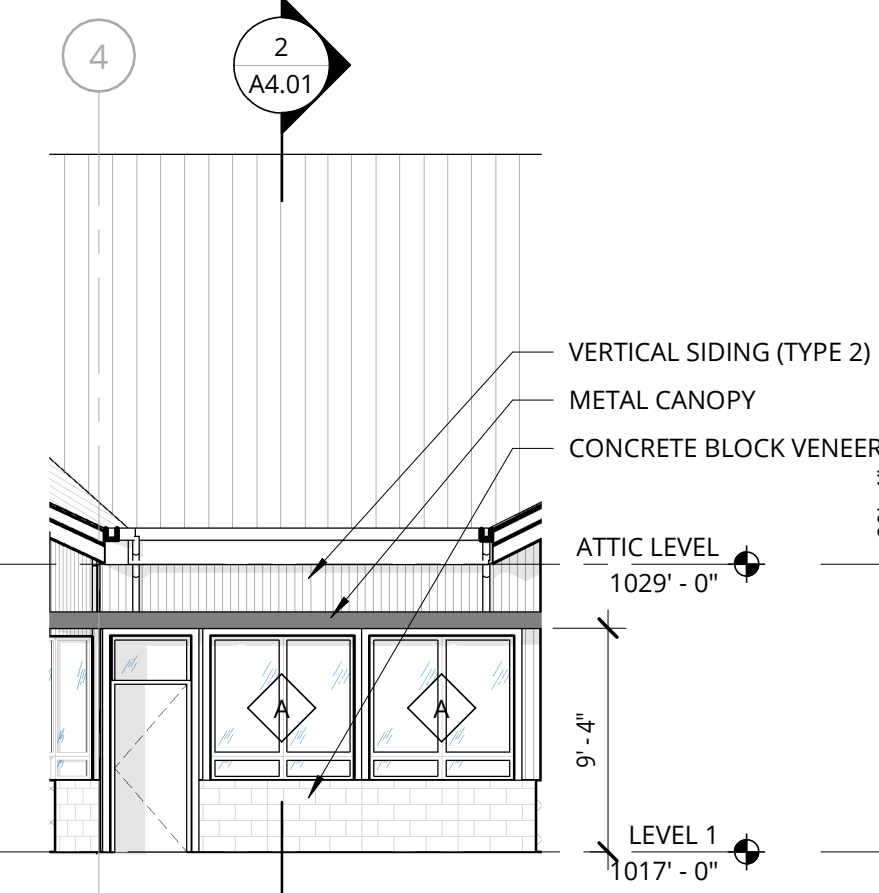
PAINTED WOOD TRIM AND FASCIA
COLOR: MILLER H119 STURGIS GRAY

SHEET METAL TRIM
COLOR: CHARCOAL

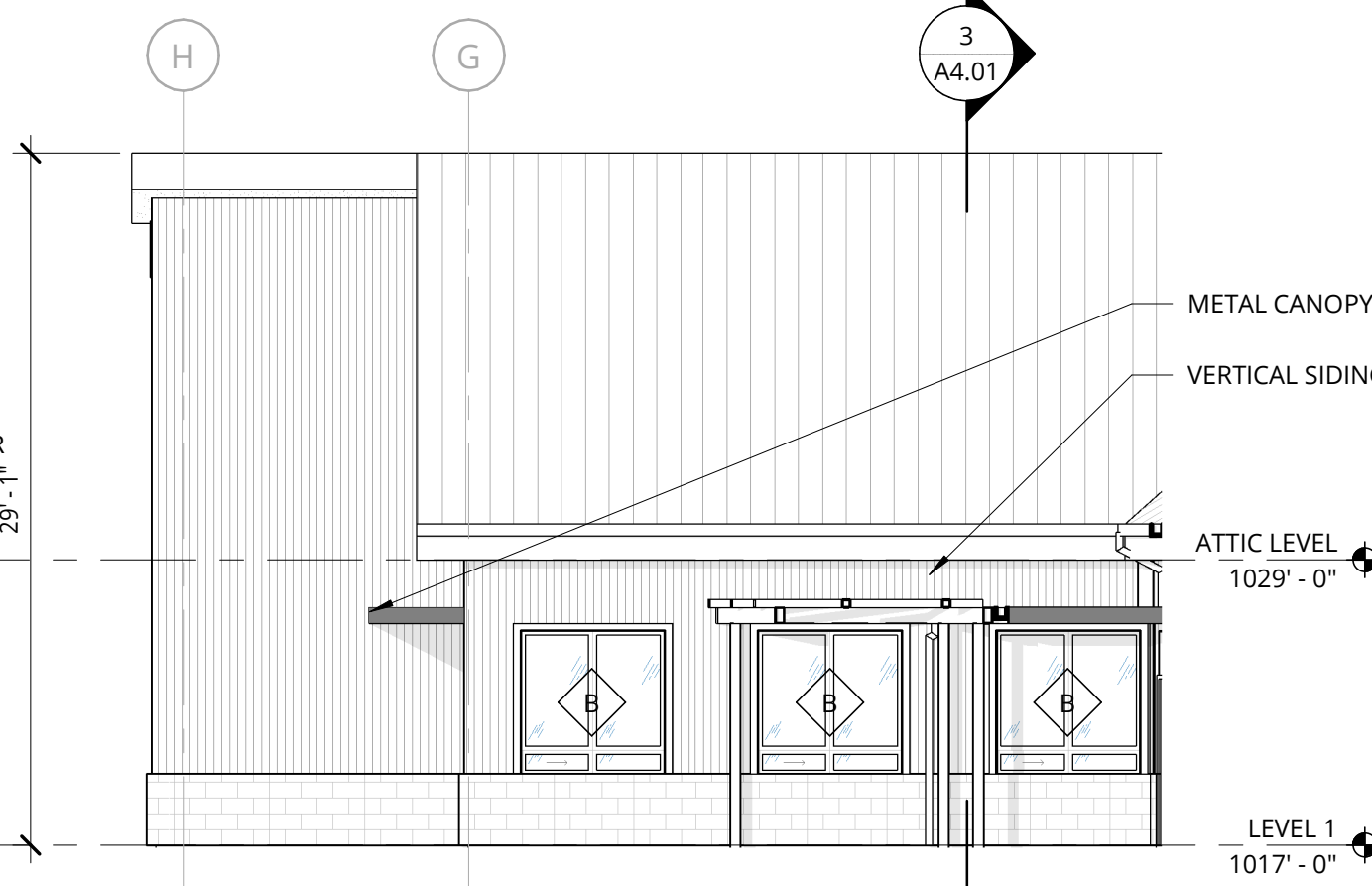
NOTE: METAL CANOPIES, VINYL WINDOWS, AND ALUMINUM STOREFRONT AT ENTRANCE TO BE BLACK



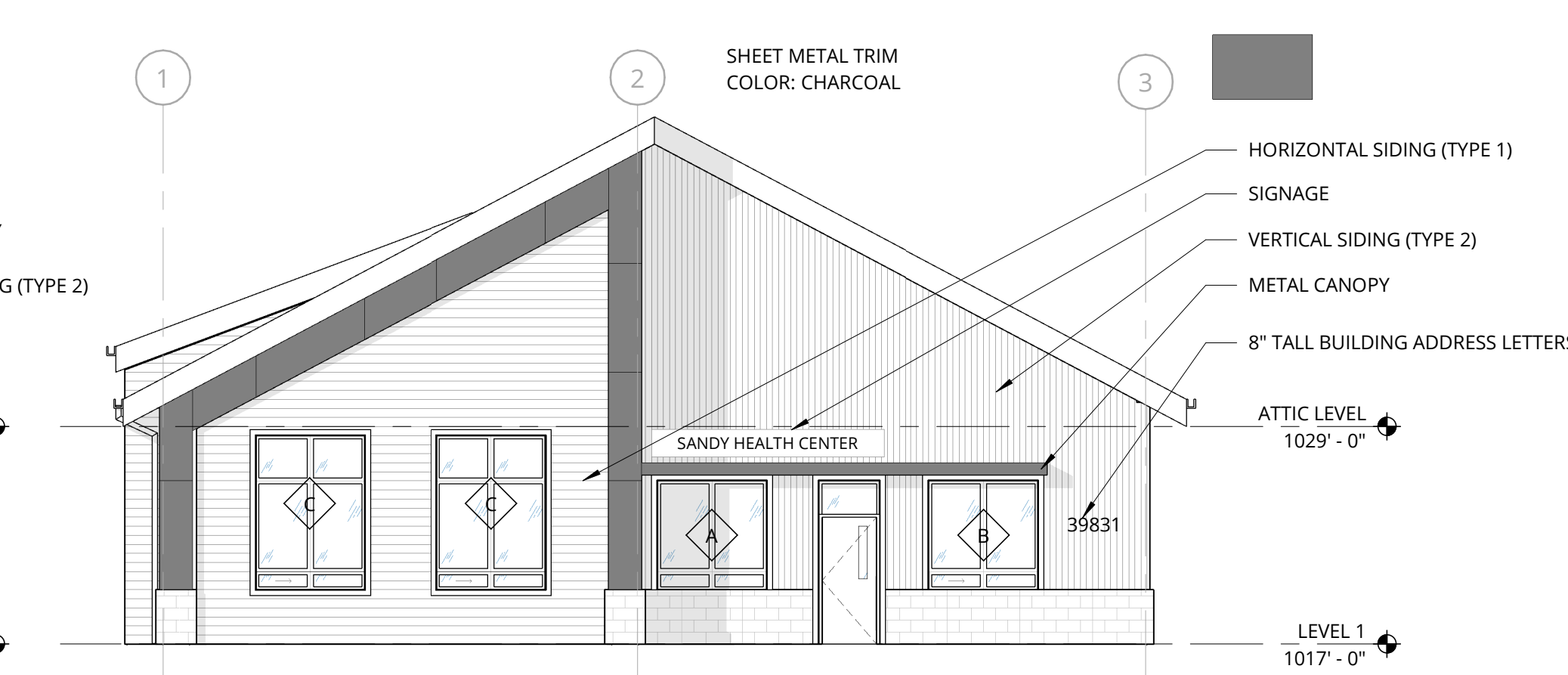
3 SOUTH ELEVATION - 2
1/8" = 1'-0"



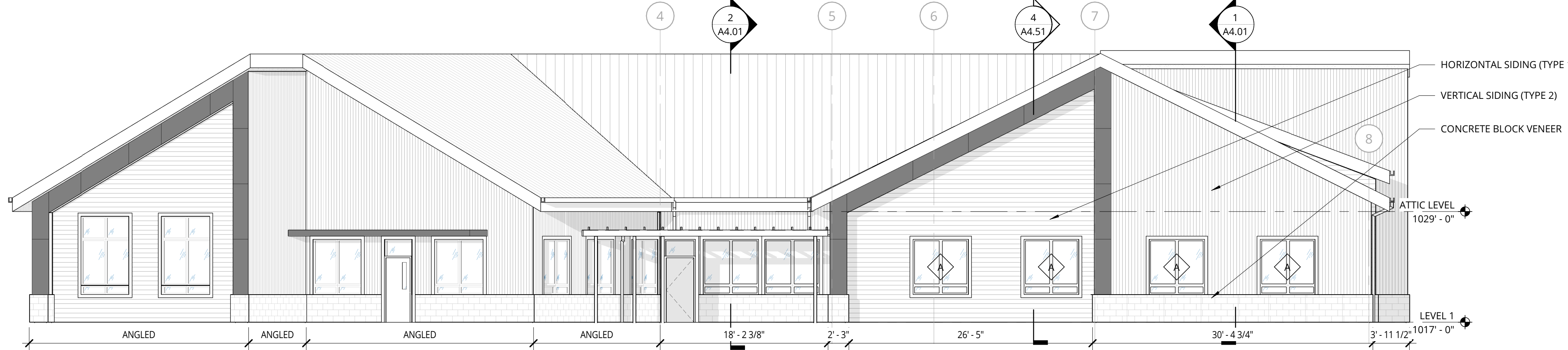
4 SOUTH ELEVATION - 3
1/8" = 1'-0"



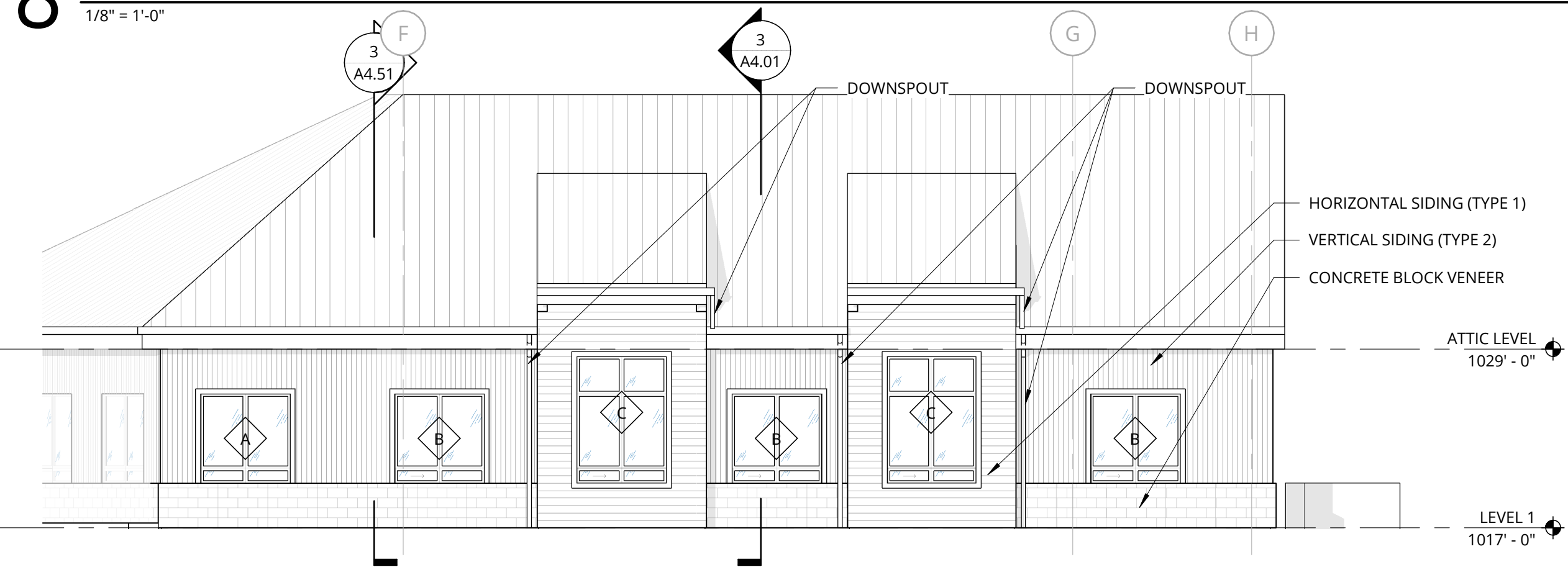
5 SOUTH ELEVATION - 4
1/8" = 1'-0"



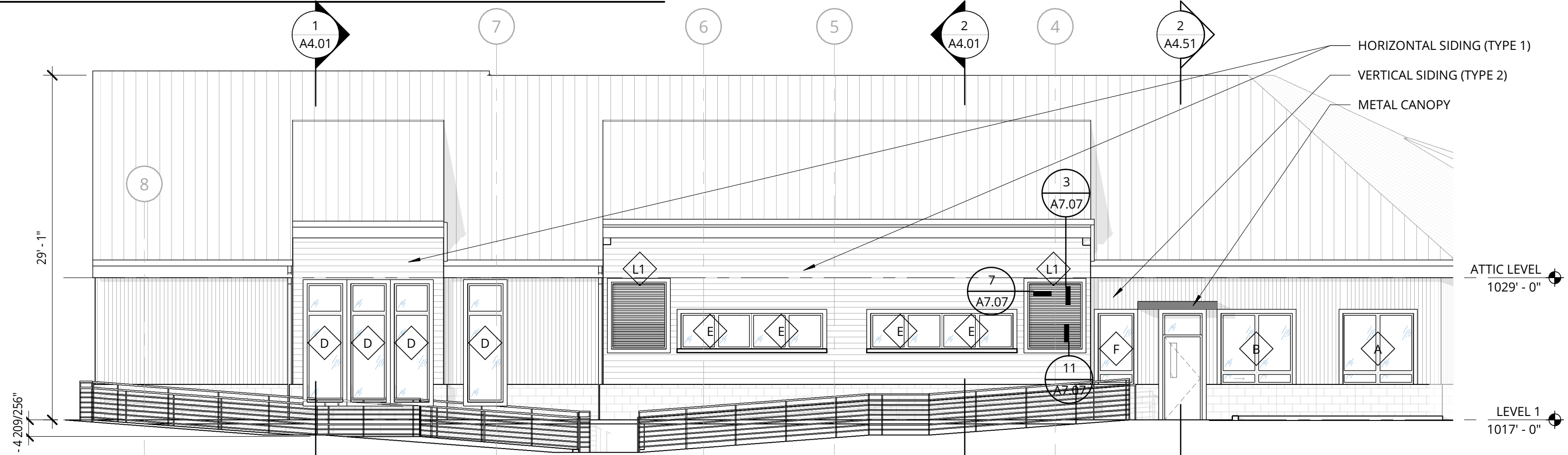
6 SOUTH ELEVATION - 5
1/8" = 1'-0"



8 SOUTH ELEVATION - FULL
1/8" = 1'-0"



7 WEST
1/8" = 1'-0"



9 NORTH ELEVATION
1/8" = 1'-0"

NOT FOR CONSTRUCTION



38 NORTHWEST DAVIS, SUITE 300
PORTLAND, OR 97209
503.245.7100

1505 5TH AVE, SUITE 300
SEATTLE, WA 98101
206.576.1600

1014 HOWARD STREET
SAN FRANCISCO, CA 94103
415.252.7063

© ANKROM MOISAN ARCHITECTS, INC.

SANDY HEALTH CENTER
39831 HIGHWAY 26
SANDY, OR 97055
CLACKAMAS COUNTY

REVISION	DATE	REASON FOR ISSUE

BUILDING ELEVATIONS

90% CONSTRUCTION DOCUMENTS

DATE 4.3.2020 PROJECT NUMBER 192530

SHEET NUMBER **A3.11**

C:\Becht\Projects\192530-17-Sandy.Clinic\192530-17-Sandy.Clinic.scotts.rvt