

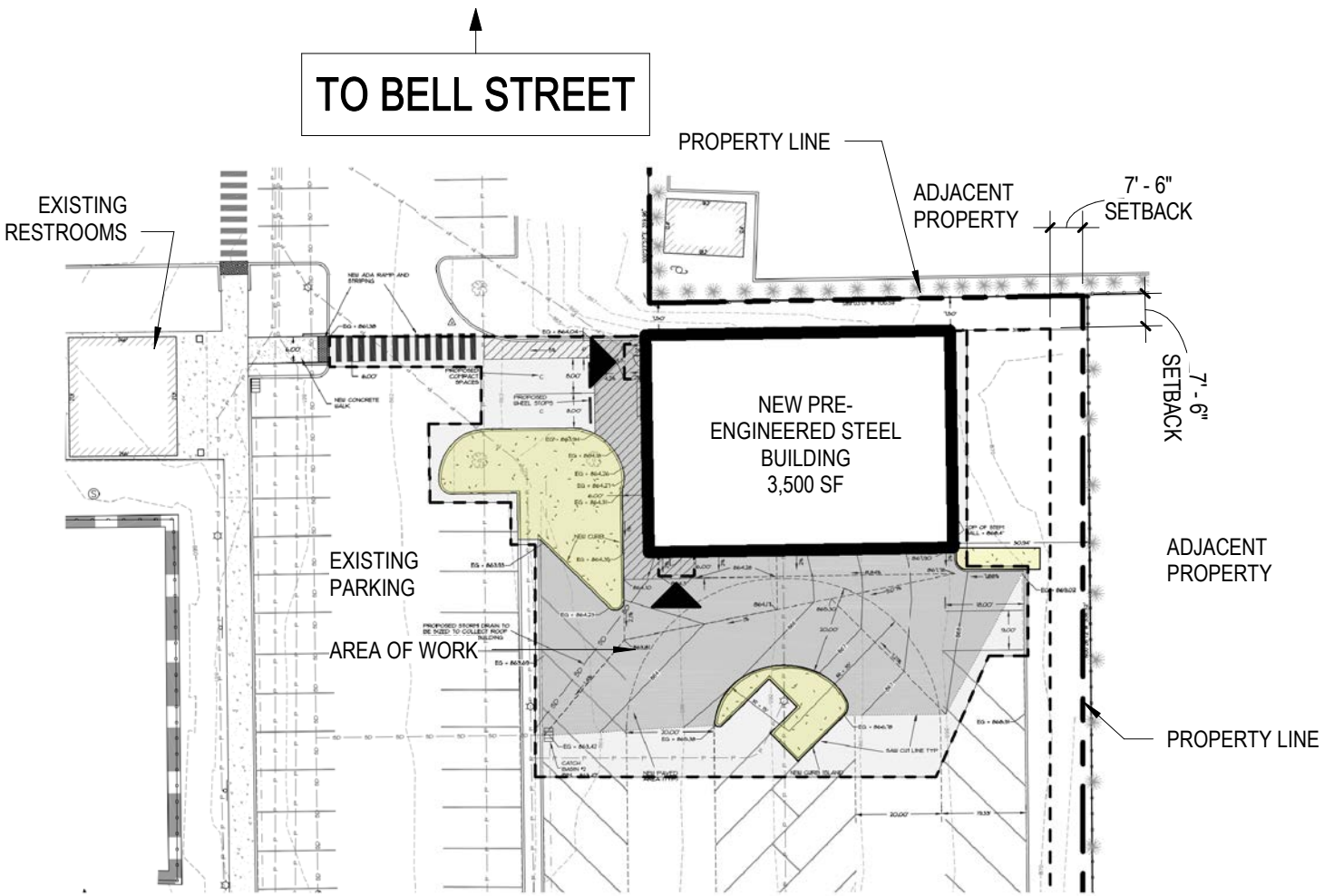
SANDY HIGH SCHOOL FIELD HOUSE
DESIGN REVIEW APPLICATION



SITE ANALYSIS



OVERALL CAMPUS PLAN AND VICINITY
NTS

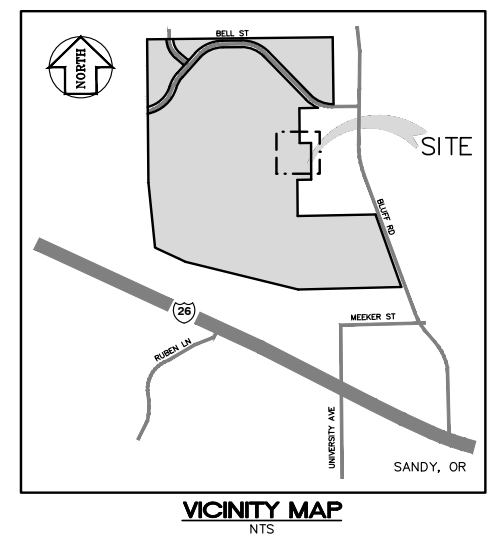
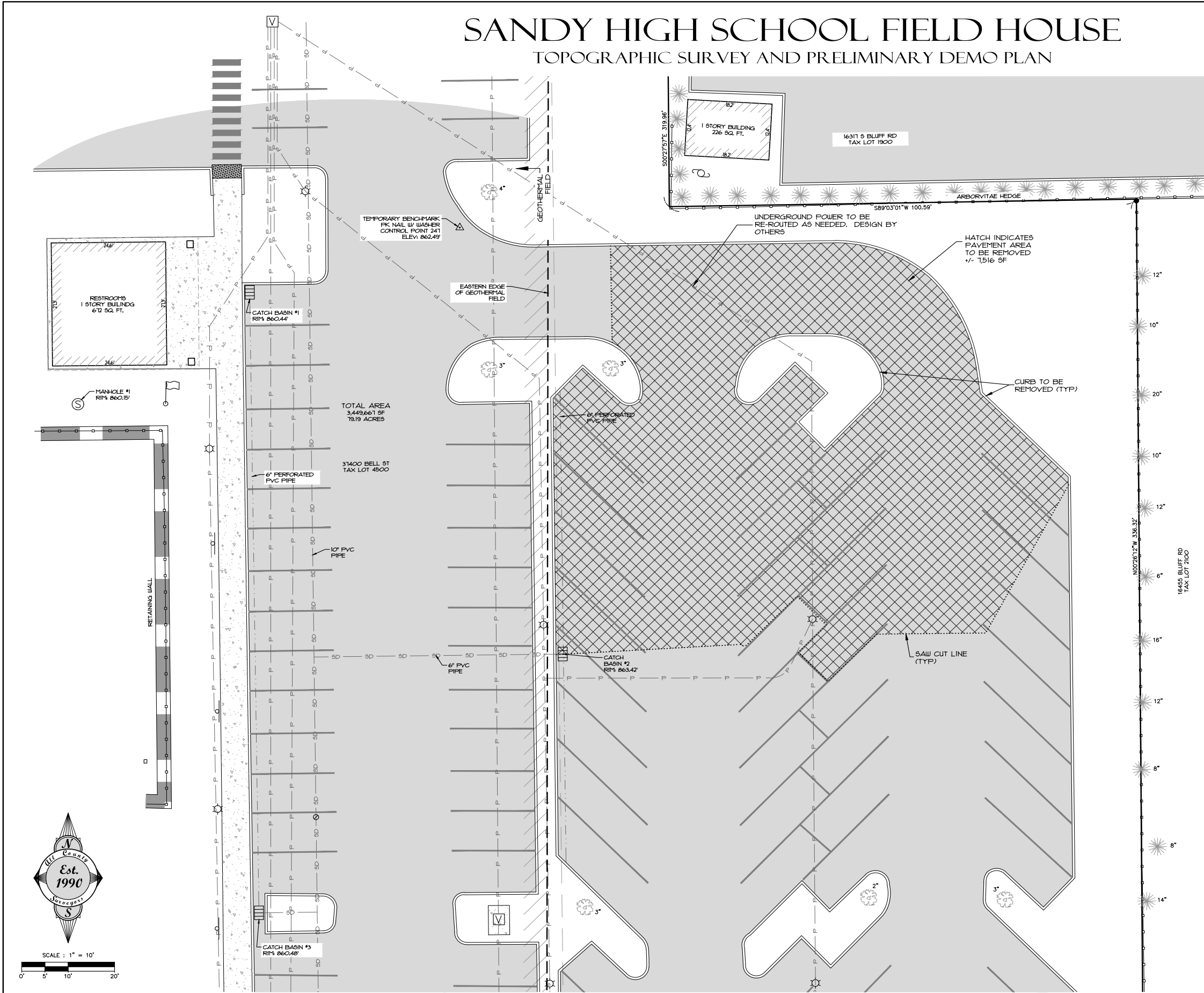


PROJECT SITE
1" = 40'



TOPO AND SITE DEMO PLAN

SANDY HIGH SCHOOL FIELD HOUSE TOPOGRAPHIC SURVEY AND PRELIMINARY DEMO PLAN



LEGEND

(E) PROPERTY LINE
(E) 5' GROUND CONTOUR
(E) 1' GROUND CONTOUR
(E) BUILDING WALL
(E) BLDG OH
(E) WALL
(E) AC PAVEMENT
(E) SIDEWALK/CONCRETE
(E) EDGE OF GEOTHERMAL FIELD
(E) CURB
(E) FENCE
(E) STORM LINE
(E) PERFORATED STORM LINE
(E) UNDERGROUND POWER LINE
FOUND SURVEY MONUMENT
(E) CATCH BASIN
(E) SANITARY SEWER MANHOLE
(E) SANITARY SEWER CLEANOUT
(E) UTILITY VAULT
(E) LIGHT POLE
(E) UTILITY POLE
(E) SIGN
(E) OR (P) PARKING STRIPING
(E) DECIDUOUS TREE W/ DBH
(E) CONIFEROUS TREE W/ DBH
SURVEY CONTROL POINT
FLAG POLE

SURVEY NOTES

SOME FEATURES ON THIS MAP MAY BE SHOWN OUT OF SCALE FOR CLARITY.

UTILITIES SHOWN ON THIS SURVEY ARE LIMITED TO THOSE ITEMS VISIBLE BY SURFACE INSPECTION AND AS-BUILT DRAWINGS FROM SCHOOL DISTRICT. LOCATIONS OF UNDERGROUND UTILITY LINES ARE APPROXIMATE. SUBSURFACE STRUCTURES, IF ANY, ARE NOT SHOWN. UNDERGROUND LOCATES SHALL BE COMPLETED PRIOR TO CONSTRUCTION.

THE ELEVATION DATUM IS BASED ON THE CITY OF SANDY BENCHMARK NUMBER 11. THE BENCHMARK IS LOCATED IN THE CURB AT THE SOUTHEAST CORNER OF BLUFF ROAD AND BELL STREET. THE PUBLISHED ELEVATION IS 866.452 AND IS SHOWN ON THIS SURVEY.

THIS FIELD SURVEY WAS COMPLETED ON 6-10-20

BY	
REVISION	
DATE	
NO.	
DESIGNED: RLM	
DRAWN: JTD	
CHECKED: DLH	
APPROVED: RLM	
REVISION DATE: 12/31/20	

REGISTERED PROFESSIONAL LAND SURVEYOR	
DATE: 10-4-20	
FILE: 20-098 - PLANNING.dwg	
SCALE: 1"=10'	
HORIZ: 1"=10'	
VERT: N/A	
SECTION: 11	
RANGE: 2S	
TWP: 4E	
LEGAL: 11 2S 4E	

PROJECT: SANDY HIGH SCHOOL FIELD HOUSE
TOPOGRAPHIC SURVEY AND PRELIMINARY DEMO PLAN

LOCATION: BELL STREET, SANDY, OREGON

Surveyors & Planners, Inc.
Surveying, Planning and Civil Engineering
P.O. Box 855 Sandy, OR 97055
Phone: (503) 668-3151
Fax: (503) 668-4750

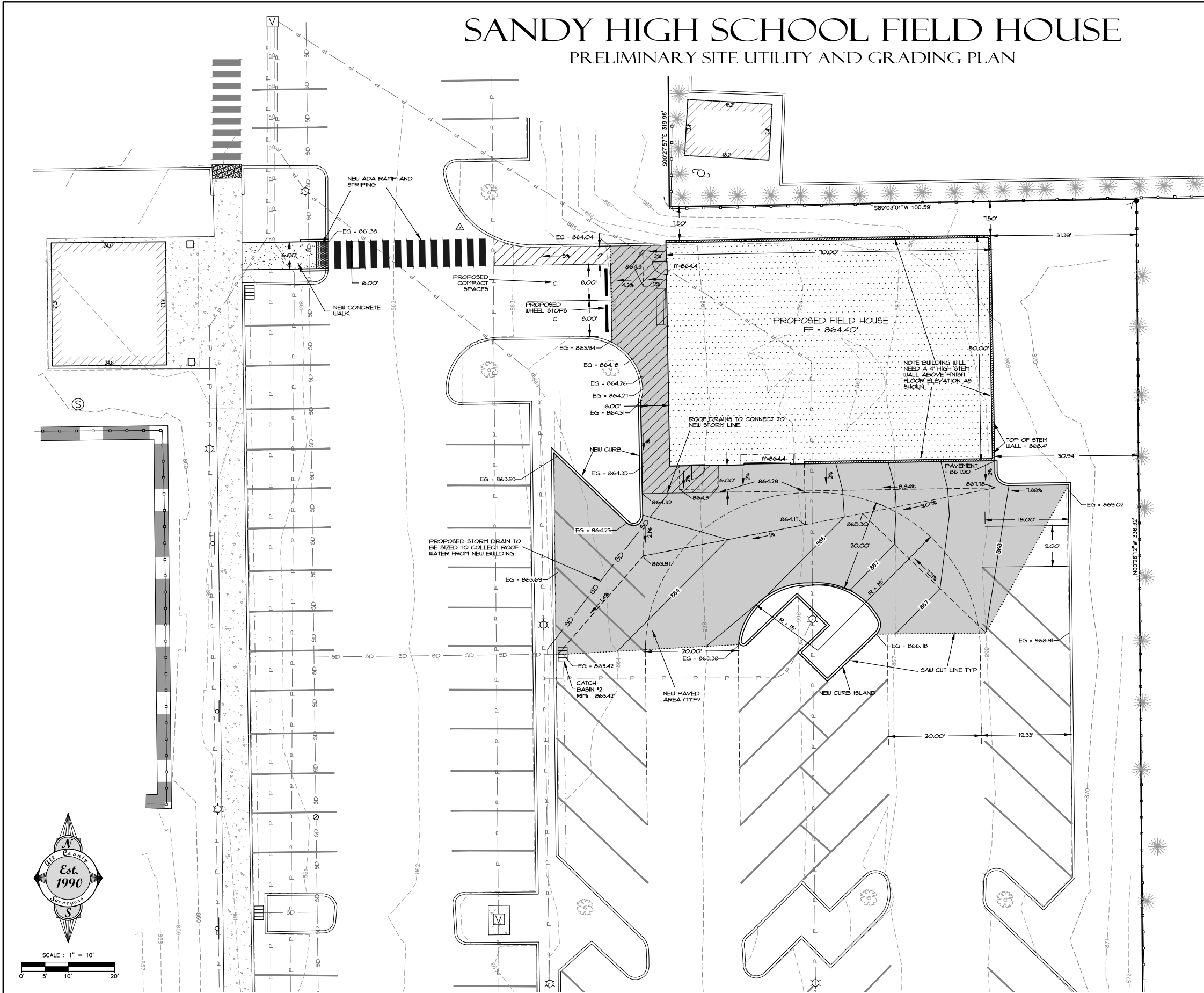
CLIENT: SANDY PIONEER BASEBALL, BRYCE BALLIE
304 NE HOOD AVE
GRESHAM OR 97030
PHONE: 503-380-0309



GRADING & UTILITY PLAN

SANDY HIGH SCHOOL FIELD HOUSE PRELIMINARY SITE UTILITY AND GRADING PLAN

PRELIMINARY
NOT FOR
CONSTRUCTION



IMPERVIOUS AREA TABLE

EXISTING PAVEMENT TO BE REMOVED = +/- 1,516 SF
 NEW PROPOSED PAVEMENT = 3,981 SF
 NEW BUILDING AREA = 3,491 SF
 TOTAL NEW IMPERVIOUS AREA = 1,476 SF

NOTE THERE WILL BE A NET DECREASE OF 38 SF OF IMPERVIOUS AREA

PARKING SPACE TABLE

THERE WILL BE 12 PARKING SPACE REMOVED
 THERE ARE 4 NEW PARKING SPACES
 THERE IS A NET DECREASE OF 8 PARKING SPACES.

DATE	NO.	REVISION	BY



SCALE	VERT. N/A	HORIZ. 1"=10'
DATE	10-4-20	FILE: 20-098 - PLANNING.dwg
SECTION	TWP. 2S	RANGE 4E
SECTION	11	2S

PROJECT: **SANDY HIGH SCHOOL FIELD HOUSE**
 PRELIMINARY SITE UTILITY AND GRADING PLAN

LOCATION: **BELL STREET, SANDY, OREGON**

Surveyors & Planners, Inc.
 Surveying, Planning and Civil Engineering
 P.O. Box 855 Sandy, OR 97055
 Phone: (503) 668-3151
 Fax: (503) 668-4750

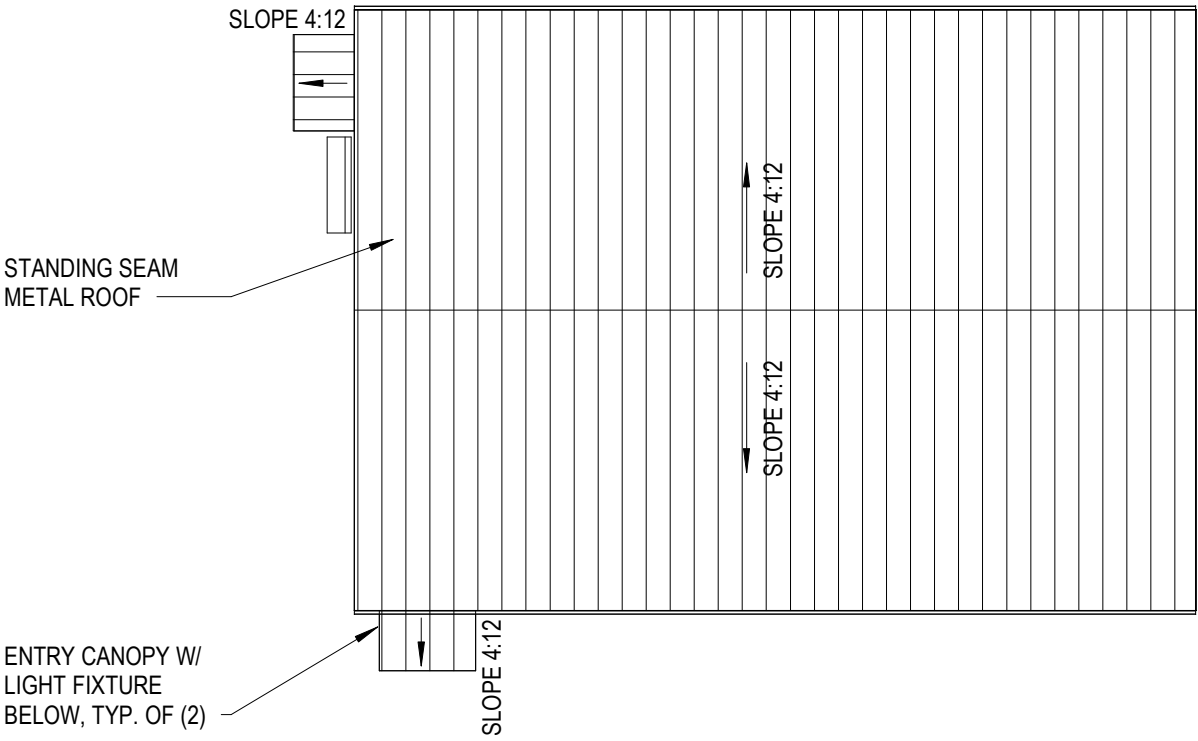
DATE OF PLOT: 10-4-20

CLIENT: SANDY PIONEER
 BASEBALL, BRYCE BALLIE
 304 NE HOOD AVE
 GRESHAM OR 97030
 PHONE: 503-380-0309

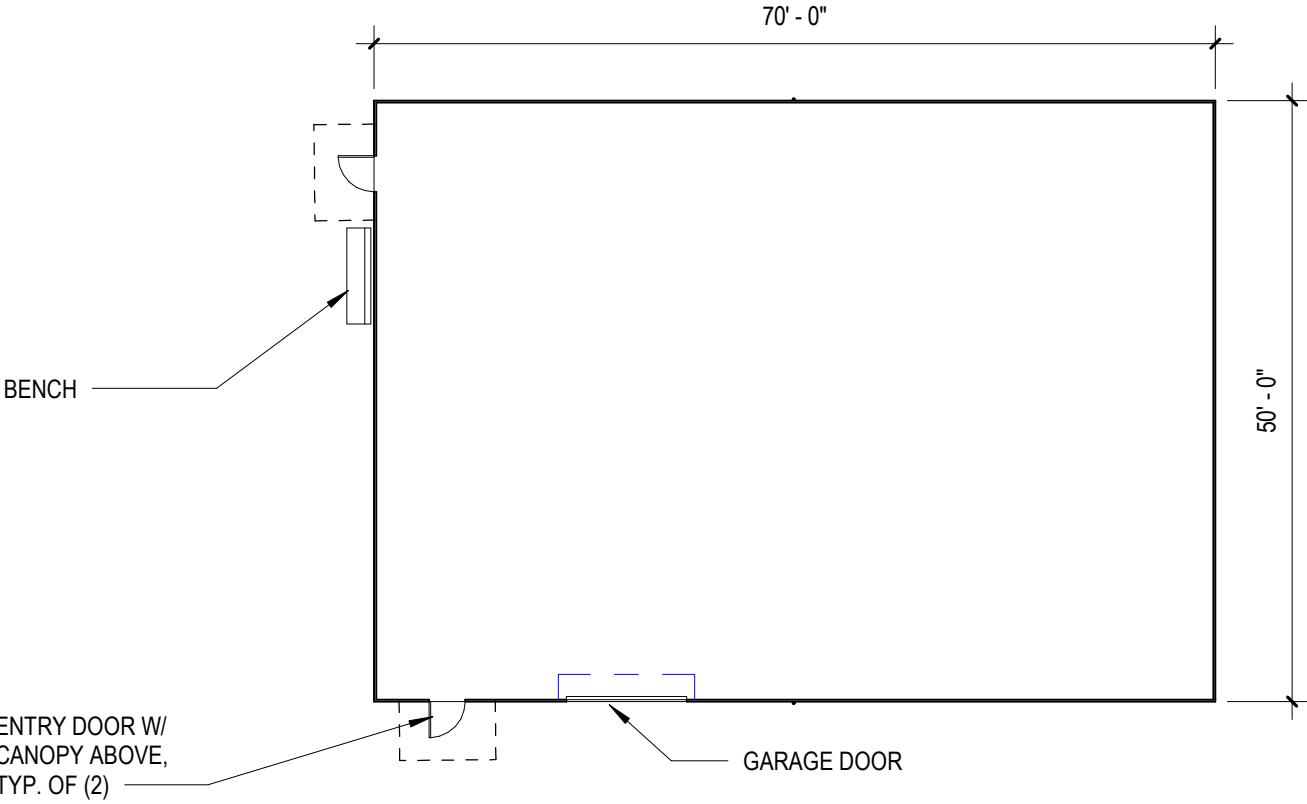


SCALE: 1" = 10'
 0' 5' 10' 20'

FLOOR & ROOF PLANS



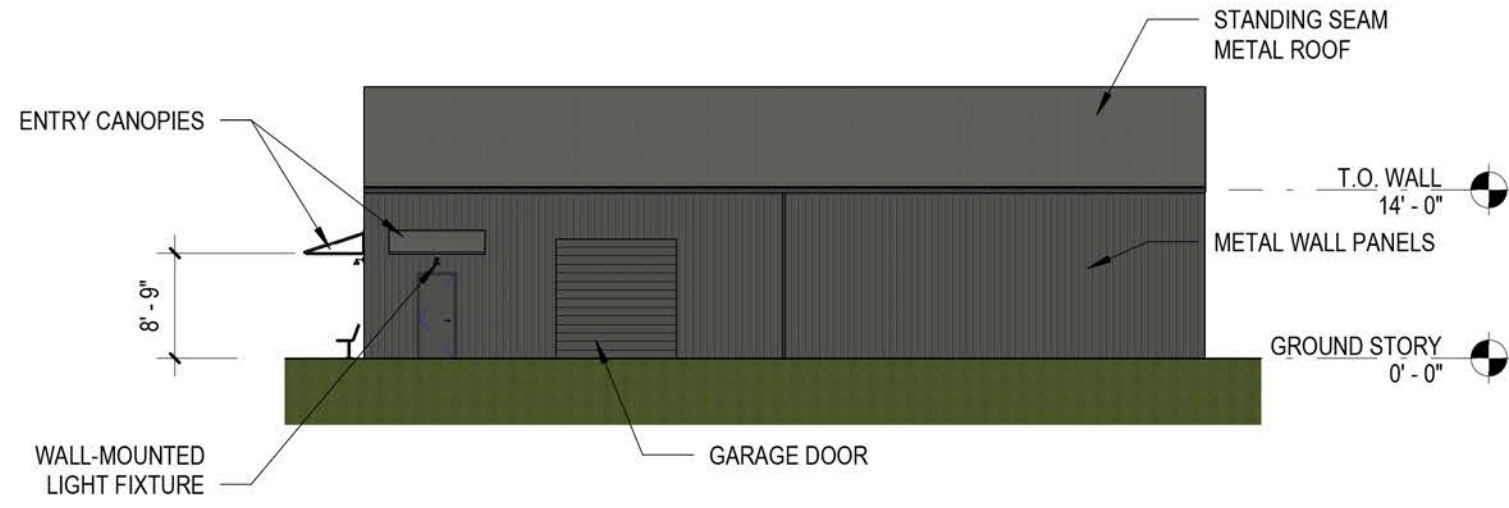
ROOF PLAN
1/16" = 1'-0"



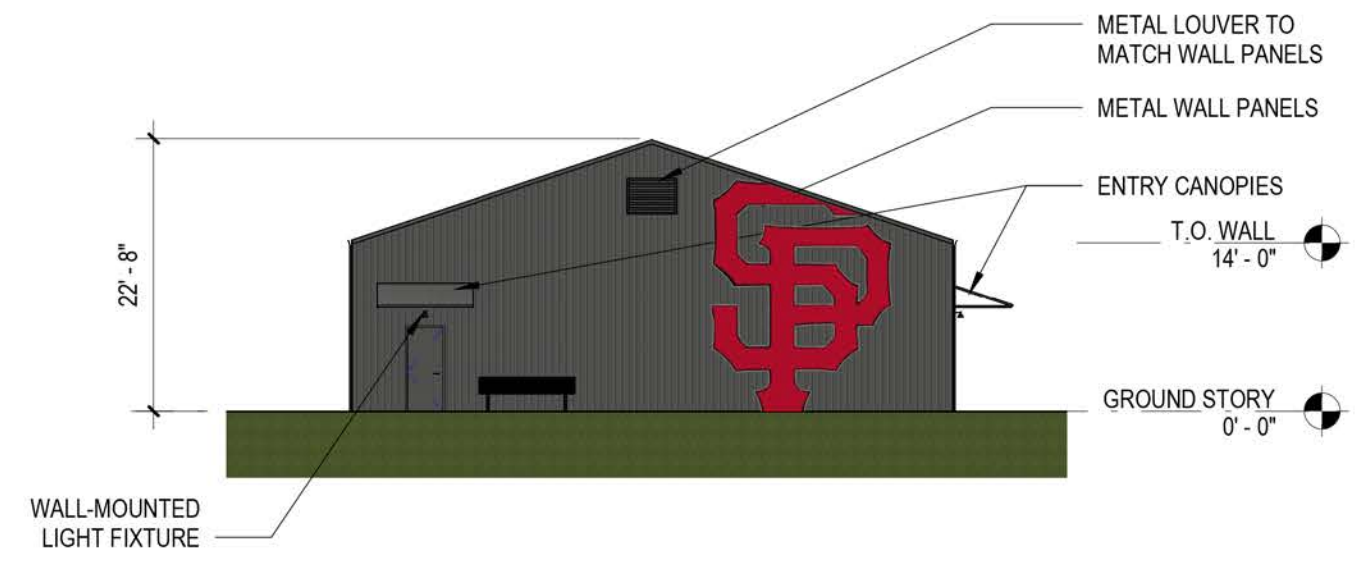
FLOOR PLAN
1/16" = 1'-0"



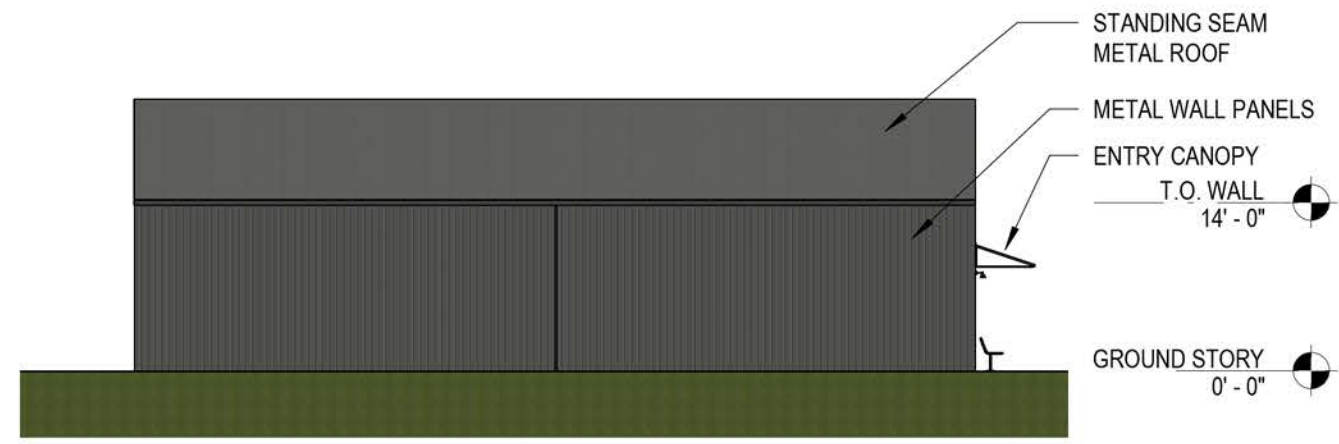
ELEVATIONS



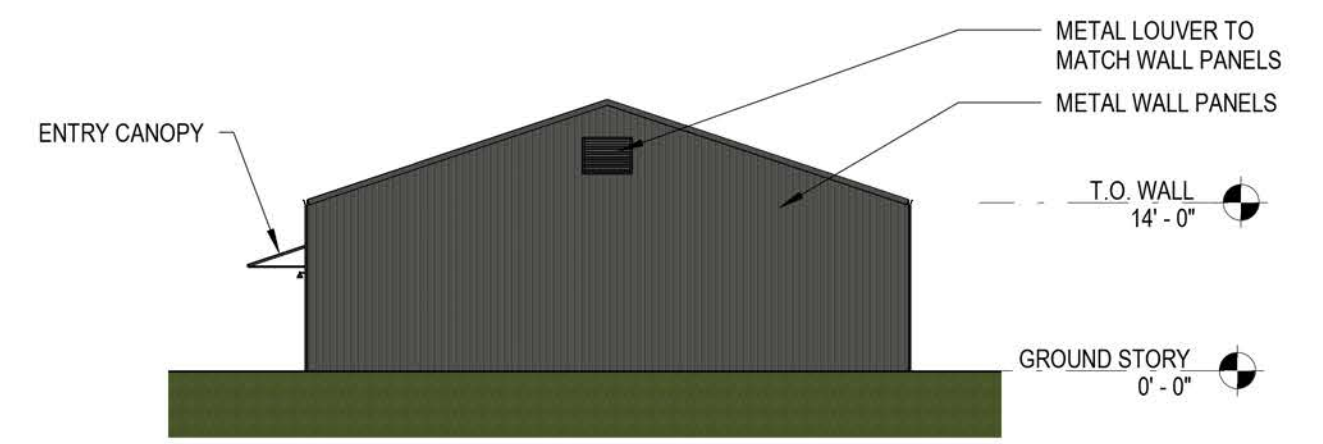
SOUTH ELEVATION
1/16" = 1'-0"



WEST ELEVATION
1/16" = 1'-0"



NORTH ELEVATION
1/16" = 1'-0"



EAST ELEVATION
1/16" = 1'-0"

LINE-OF-SITE DIAGRAMS

KEY PLAN OF VIEW POINTS



LINE-OF-SIGHT DIAGRAM

FROM BLUFF ROAD



Image capture: Jul 2019 © 2020 Google United States Terms Report a problem

LINE-OF-SIGHT DIAGRAM

FROM BELL STREET



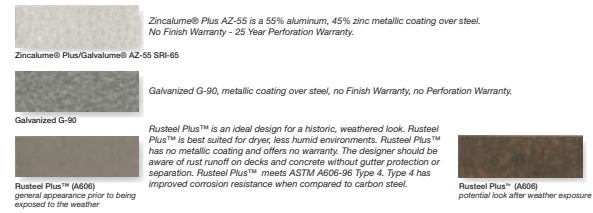
MATERIALS & COLORS



Standard ARMORTECH™ Coatings 40-Year Limited Warranty



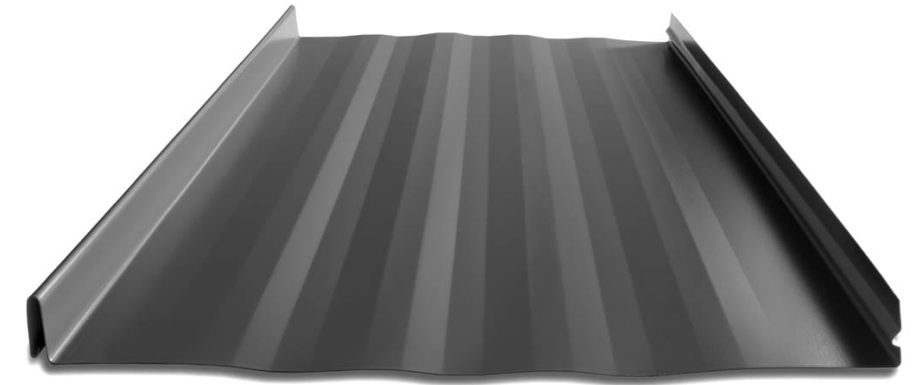
Weathering Material No Finish Warranty (These materials will change appearance)



In partnership with:



METAL WALL PANEL



METAL ROOF PANEL



ENTRY CANOPY



WALL-MOUNTED LIGHT FIXTURE

Toldbod 155 Wall

The light is directed 100% downwards, and the shade has a matt white painted inside which emits a soft, diffused, comfortable light. The fixture fulfills full cut-off criteria.

Project name:

Project type:

Notes:



Finish
Aluminum coloured with textured surface or black with textured surface, powder coated.

Mounting
Terminal block: 1x3x2.5mm². Cable entries: 2x bottom + 3x rear entries for Ø 10-14.5mm cable. Looping: Approved, max. 3x1.5mm².

Class
Ingress protection IP44. Electric shock protection I w. ground. IK05.

Light source & energy class
A+ - E | 1x40W E14

Materials
Fixture head: Chilled casting aluminum. Shield: Laser cut acrylic satine. Wall box: Die cast aluminum. Arm: Chilled casting aluminum.

Sizes and weights
Width x Height x Length (mm) | 155 x 158 x 267 Max 1.4 kg

Specification notes
The innovation of light sources is ongoing. Consequently we only inform about the max. wattages. On www.louispoulsen.com we update a list of recommendable light sources.



Design to Shape Light

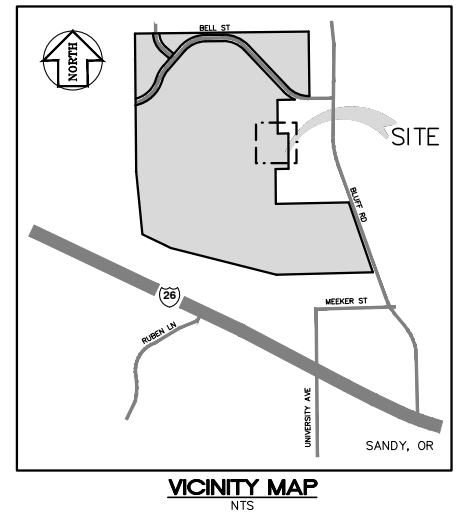
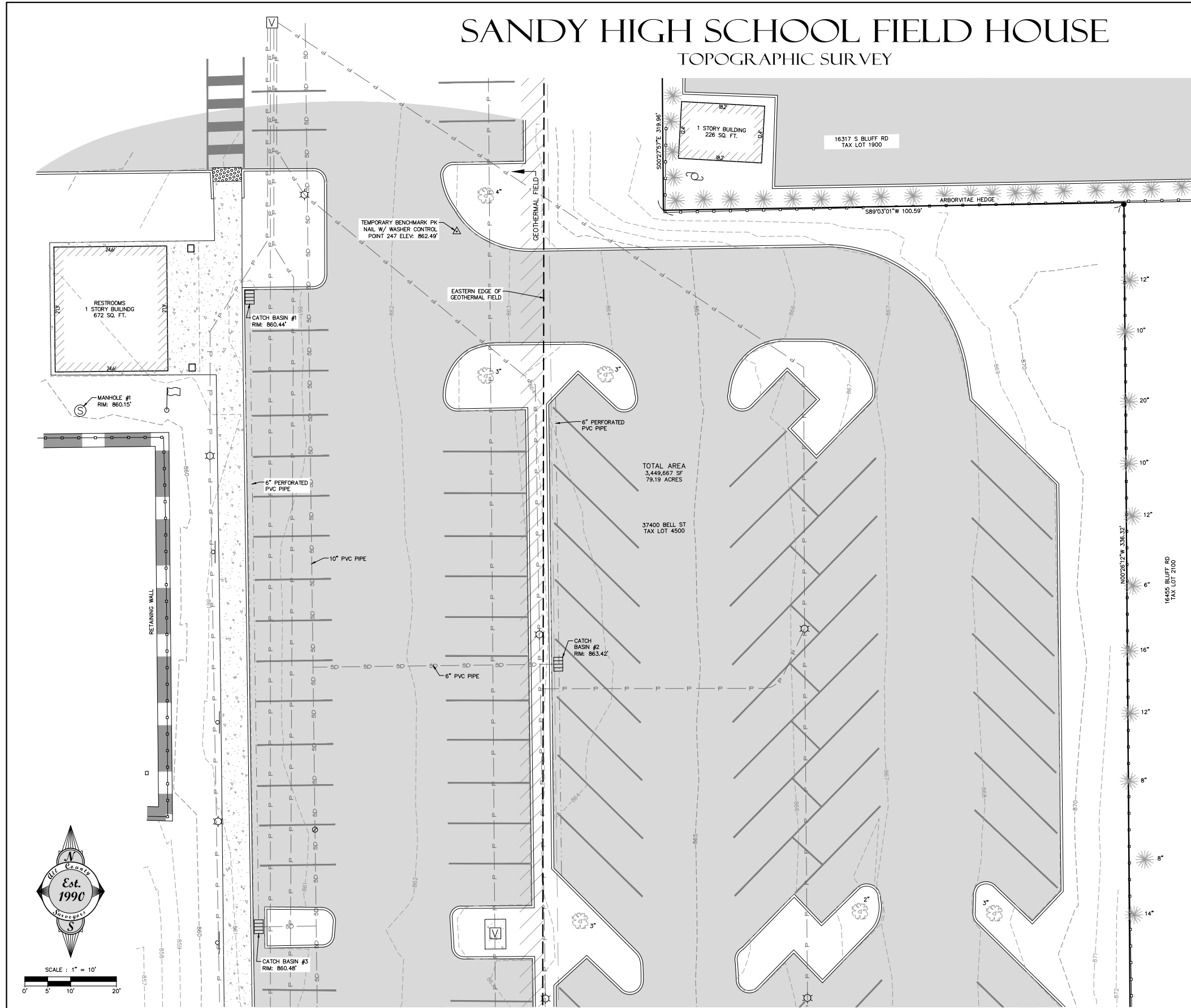
louispoulsen.com

SHS FIELD HOUSE OCTOBER 6, 2020

JONES ARCHITECTURE

EXISTING SITE SURVEY

FOR REFERENCE



LEGEND

(E) PROPERTY LINE	---
(E) 5' GROUND CONTOUR	- - - - -
(E) 1' GROUND CONTOUR	- - - - -
(E) BUILDING WALL	▬▬▬▬▬
(E) BLDG OH	▬▬▬▬▬
(E) WALL	▬▬▬▬▬
(E) AC PAVEMENT	▬▬▬▬▬
(E) SIDEWALK/CONCRETE	▬▬▬▬▬
(E) EDGE OF GEOTHERMAL FIELD	▬▬▬▬▬
(E) CURB	▬▬▬▬▬
(E) FENCE	▬▬▬▬▬
(E) STORM LINE	SD
(E) PERFORATED STORM LINE	SD
(E) UNDERGROUND POWER LINE	P
FOUND SURVEY MONUMENT	●
(E) CATCH BASIN	⊞
(E) SANITARY SEWER MANHOLE	⊞
(E) SANITARY SEWER CLEANOUT	⊞
(E) UTILITY VAULT	⊞
(E) LIGHT POLE	⊞
(E) UTILITY POLE	⊞
(E) SIGN	⊞
(E) OR (P) PARKING STRIPING	▬▬▬▬▬
(E) DECIDUOUS TREE W/ DBH	☼*
(E) CONIFEROUS TREE W/ DBH	☼*
SURVEY CONTROL POINT	⊞
FLAG POLE	⊞

SURVEY NOTES

SOME FEATURES ON THIS MAP MAY BE SHOWN OUT OF SCALE FOR CLARITY.

UTILITIES SHOWN ON THIS SURVEY ARE LIMITED TO THOSE ITEMS VISIBLE BY SURFACE INSPECTION AND AS-BUILT DRAWINGS FROM SCHOOL DISTRICT. LOCATIONS OF UNDERGROUND UTILITY LINES ARE APPROXIMATE. SUBSURFACE STRUCTURES, IF ANY, ARE NOT SHOWN. UNDERGROUND LOCATES SHALL BE COMPLETED PRIOR TO CONSTRUCTION.

THE ELEVATION DATUM IS BASED ON THE CITY OF SANDY BENCHMARK NUMBER 11. THE BENCHMARK IS LOCATED IN THE CURB AT THE SOUTHEAST CORNER OF BLUFF ROAD AND BELL STREET. THE PUBLISHED ELEVATION IS 866.452 AND IS SHOWN ON THIS SURVEY.

THIS FIELD SURVEY WAS COMPLETED ON 6-10-20

DATE	NO.	REVISION	BY
REGISTERED PROFESSIONAL LAND SURVEYOR			
RAY L. MOORE			
RENEWAL DATE: 12/31/20			
SCALE	VERT.	HORIZ.	DATE
1" = 10'	N/A	1" = 10'	06-22-2020
FILE: 20-098 - TOPO.dwg	LEGAL	TWP.	RANGE
		2S	4E
SECTION	TWP.	RANGE	
11	2S	4E	
PROJECT: SANDY HIGH SCHOOL FIELD HOUSE TOPOGRAPHIC SURVEY			
LOCATION: BELL STREET, SANDY, OREGON			
Surveyors & Planners, Inc. Surveying, Planning and Civil Engineering P.O. Box 955 Sandy, OR 97055 Phone: (503) 866-3151 Fax: (503) 866-4730 DATE OF PLOT: 06-16-2020			
CLIENT: SANDY PIONEER BASEBALL, BRYCE BALLIE 304 NE HOOD AVE GRESHAM OR 97030 PHONE: 503-360-0309			

SITE PHOTOS

SHS CAMPUS



CONTEXT PHOTOS

SHS CAMPUS



RENDERING
VIEW 1



RENDERING
VIEW 2

