



CITY OF SANDY, OREGON

TREE REMOVAL PERMIT APPLICATION FORM

Planning Department
39250 Pioneer Blvd.
Sandy OR 97055
503-668-4886 (Phone)
503-668-8714 (Fax)

(Please print or type the information below)

Property Location or Address 16641 Champion Way Sandy, OR 97055

Map & Tax Lot Number T -2S, R -4E, Section 15A; Tax Lot(s) 209

Estimated starting date: 1/20/22 Ending date: 2/1/22

Briefly Describe the Project Ground up self-storage project located at Champion and Industrial way

Remove one Black Cottonwood damaged by beaver

Additional Information as required by the Planning Director: (See Chapter 17.102 for details) Including but not limited to:

1. Two copies of a scaled site plan to contain the following information:
 - a. dimensions of the property and parcel boundaries;
 - b. location and species of trees 11 inches DBH or greater to be retained and cut;
 - c. location and type of tree protection measures.
2. A scaled re-planting plan indicating ground cover type, species of trees to be planted, and general location of re-planting.
3. An application for removal of a hazard within a protected setback area or a tree required to be retained as defined in Chapter 17.102.50 shall also contain a report from a certified arborist or professional forester indicating that the condition or location of the tree presents a hazard or danger to persons or property and that such hazard or danger cannot reasonably be alleviated by treatment or pruning.

I am the (check one) owner lessee of the property listed above and the statements and information contained herein are in all respects true, complete and correct to the best of my knowledge and belief.

Applicant/Owner Spartan Investment Group	Owner Contractor SeaCon LLC
Address 1440 Brickyard Rd. STE 4	Address 165 NE Juniper St, Suite 100
City/State/Zip Golden, CO 80403	City/State/Zip Issaquah, WA 98027
Phone 703-296-7921	Phone 503-718-4155
Signature 	Signature

If signed by Agent, owner's written authorization must be attached.

Within 15 days of the date of accepting an application for a Type I Permit, the city shall complete an onsite inspection of proposed activities and issue or deny the permit.

File No.	App. Date <u>1/26/22</u>	Rec. No.	Fee \$ <u>105⁰⁰</u>
Type of Review (circle one): Type I Type II Type III			



Springwater Arboriculture LLC

CCB# 158098

4547 S.E. Brae St. Milwaukie, OR 97222 (503) 631-4760

December 22, 2021
Tree Assessment

This Tree Assessment is done at the request of Jack Mutty of the Spartan Investment Group, LLC for a tree located at 16641 Champion Way, Sandy OR 97055. The site is currently under construction.

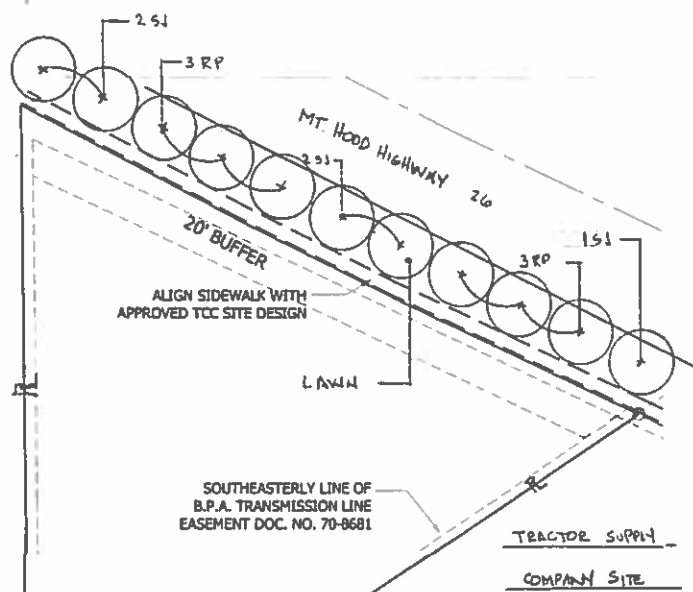
The subject tree is a Black Cottonwood (*Populus trichocarpa*) 13" dbh, 35' tall and in fair condition. This tree has been damaged by a beaver. The beaver notched a face cut into the trunk which has effected 1/3 the circumference of the trunk and 1/3 the wood volume at 18" above grade. While the damage has removed conductive tissue and wood, the subject tree will probably survive and not be immediately at risk of failure. However, this is a Black Cottonwood and by design they poorly compartmentalize wounds of this nature. This tree will continue to grow vertically but will not adequately respond to the beaver damage, by replacing the lost tissue. This will allow subsequent decay to advance and compromise the surrounding wood leading to whole tree failure in the near future. There are no mitigation options short of removal to keep this tree from failing in the near future. It is recommended that this tree is removed and left on site for the beaver to use.

Prepared by

Andrew Craig
ISA Certified Arborist PN5927
ISA Tree Risk Assessment Qualified
andrew@springarborist.com







STREET TREES + #

KEY	BOTANICAL NAME	COMMON NAME	SIZE	QUANTITY	MATURE HEIGHT
RP	RHAMNUS PURSHIANA	CASCARA	2 1/2" cal	6	25'
SP	STYAX JAPONICA	JAPANESE SNOWBELL	2 1/2" cal	6	25'

STREET TREE PLANTING AT HIGHWAY 26 FRONTAGE
SCALE 1" = 40'-0"

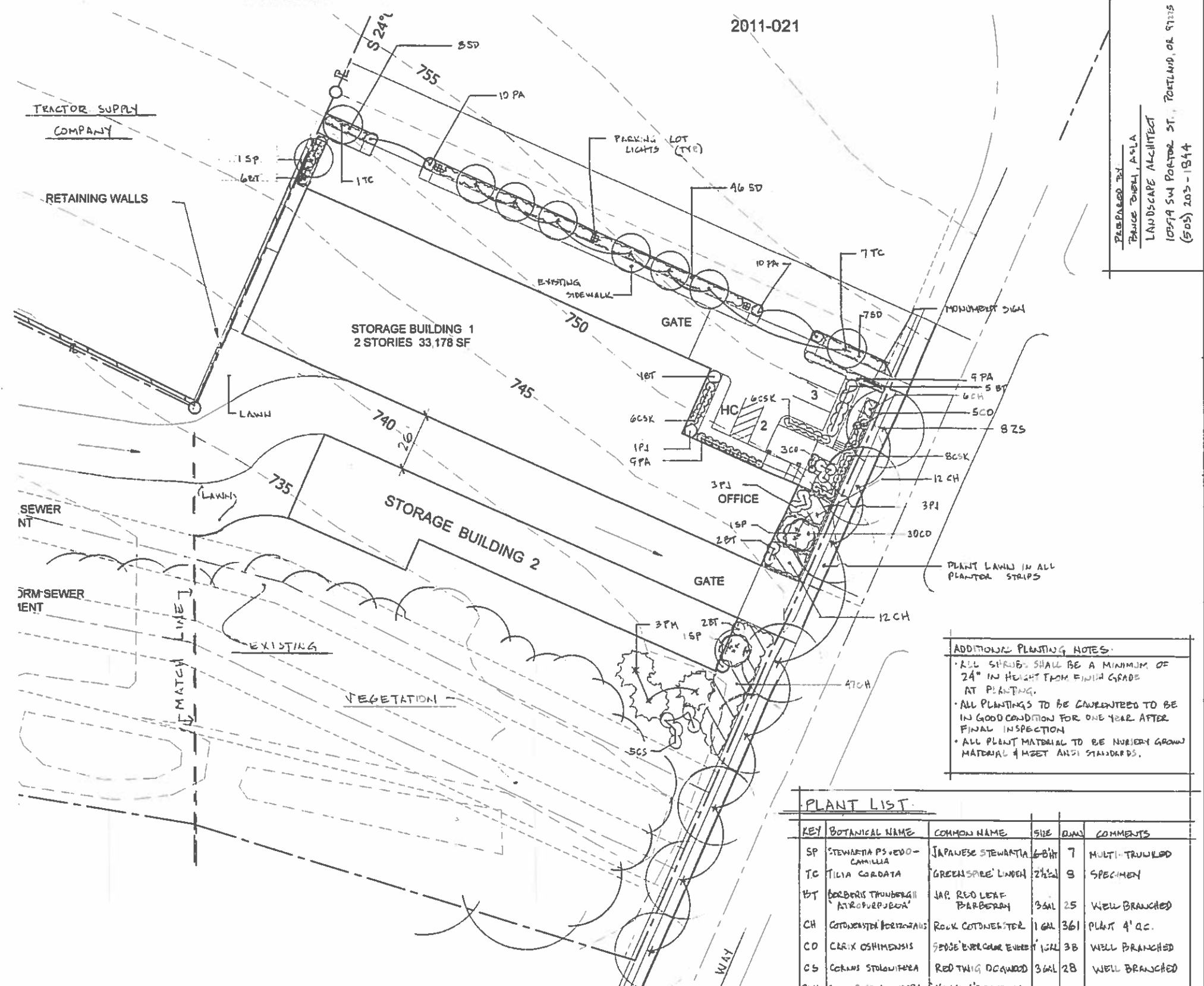
LANDSCAPE SPECIFICATIONS

PROVIDE SCHEDULE AS 1" ID. SLEEVES AT ALL BUILDS FOR PERS. PIPES
 QUALITY: PROVIDE TREES, SHRUBS AND OTHER PLANTS COMPLYING WITH THE REQUIREMENTS AND RECOMMENDATIONS OF ANSI A301 STANDARD FOR NURSERY STOCK AND AS FURTHER SPECIFIED
 SPECIES: PROVIDE TREES AND SHRUBS OF THE SPECIES SHOWN OR SPECIFIED. TREES AND SHRUBS OF LARGER SIZE MAY BE USED IN PLACE OF ROOTS OR BALLS AND EXCEEDING DIMENSIONS, IF NOT
 TREES AND SHRUBS: PROVIDE FREELY GROWN TREES AND SHRUBS. DO NOT USE TREES OR SHRUBS WHICH HAVE BEEN IN COLD STORAGE OR HELD IN. DO NOT SEND OR SEND-THE TREES OR SHRUBS IN SUCH MANNER AS TO DAMAGE BARK, BREAK BRANCHES OR DESTROY NATURAL BARK
 PREPARATION: RETAILERS MUST BRUSH THE SUBSTRATE, VERIFY ELEVATIONS, OBSERVE THE CONDITIONS UNDER WHICH TREES ARE TO BE SHIPPED. DO NOT PROCEED WITH THE WORK UNTIL SATISFACTORY CONDITIONS EXIST FOR ANY SPECIFIC PROJECT CONDITIONS, IF ANY, HAVE BEEN CORRECTED
 PREPARED SITE AND COMPLETE WORK AS SHOWN, AS PORTIONS OF THE SITE BECOME AVAILABLE WORKING WITH THE REASONABLE LIMITATIONS FOR EACH KIND OF LANDSCAPE WORK REQUIRED
 PREPARATION OF PLANTING BEDS:
 LOOSEN SUBGRADE OR PLANTING BEDS TO A MINIMUM DEPTH OF 6 INCHES USING A ROTOTILLER OR SIMILAR EQUIPMENT. REMOVE STONES OVER 1" IN ANY DIMENSION AND STICKS AND STONEL RUBBISH AND OTHER EXTRANEOUS MATTER
 SPREAD PLANTING SOIL FORTURE TO THE MINIMUM DEPTH REQUIRED TO MEET LINES GRADES AND ELEVATION SHOWN UPON LIGHT COLLARS AND MANUAL SETTLEMENT. PLACE APPROXIMATELY 1/3 OF TOTAL AMOUNT OF PLANTING SOIL UNDERNEATH AND REMAINING SUBGRADE TO GREAT LAYER THEN PLACE REMAINDER OF THE PLANTING SOIL
 PREPARATION OF PLANTING SOIL:
 REMOVE STONES, CLEAN TOPSOIL, OF ROOTS, PLANTS, SOILS, CLAY LUMPS AND OTHER EXTRANEOUS MATERIALS HINDERFUL OR TOXIC TO PLANT GROWTH
 GREAT DEPTH OF FERTILIZER FOR PLANTING SHALL NOT FOLLOW PLACING OF PLANTING SOIL WITHIN SEVEN DAYS FOR 1" AND THROUGH FIVE BACKFILL FOR PLANTING SOIL. DO NOT OVER FERTILIZE PLANTING SOIL. PLANTING SOIL, EITHER PRIOR TO PLANTING OR AFTER PLANTING ON SURFACE OF TOPSOIL AND NOT THROUGHOUT BEFORE PLANTING
 SCHEDULE OF PLANTING AND SOIL MIXTURE REQUIREMENTS:
 FOR PLANTING BEDS PROVIDE NOT LESS THAN THE FOLLOWING QUANTITIES OF SPECIFIED MATERIALS
 1/2" OF TOPSOIL PER SQUARE FEET
 1/2" OF COMPOSTED FERTILIZER TYPE 12 FOR USE SQUARE FEET
 MIXTURE APPLY 1" DEPTH OVER ALL PLANTING
 SOIL TESTS:
 FOR TREE AND SHRUBS BACKFILL PROVIDE SPECIFIED MATERIALS IN NOT LESS THAN THE FOLLOWING QUANTITIES: ONE PART OF BACKFILL TO THREE PARTS OF TOPSOIL BY VOLUME
 1/2" OF PEEL FOR ONE GALLON CONTAINER PLANTS
 1/2" OF PEEL FOR 1/2 GALLON CONTAINER PLANTS AND TREES
 1/2" OF PEEL FOR ONE GALLON CONTAINER PLANTS AND TREES
 PLANT TAGS: AS PER MANUFACTURERS DIRECTIONS

EXCAVATION FOR TREES AND SHRUBS:
 EXCAVATE WITH SHEDS WITH VERTICAL SIDES WITH BOTTOM OF EXCAVATION SLIGHTLY RAISED AT CENTER TO FACILITATE DRAINAGE. LOOSEN HARD SUBSOIL IN BOTTOM OF EXCAVATION FOR AT LEAST 12" ABOVE TREES AND SHRUBS. PLACE EXCAVATION AT LEAST 1/2" ASIDE AS THE BALL BILLED AND BILLED TO THE BALL DEPTH PLUS THE FOLLOWING ALLOWANCE FOR SETTING OF BALL ON LAYER OF COMPACTED SUBGRADE EXCAVATIONS. DO NOT MIX WITH PLANTING SOIL OR USE AS BACKFILL. REMOVE EXCESSIVE SUBGRADE EXCAVATIONS. DO NOT MIX WITH PLANTING SOIL OR USE AS BACKFILL. REMOVE EXCESSIVE SUBGRADE EXCAVATIONS. DO NOT MIX WITH PLANTING SOIL OR USE AS BACKFILL. REMOVE EXCESSIVE SUBGRADE EXCAVATIONS. DO NOT MIX WITH PLANTING SOIL OR USE AS BACKFILL.
 PLANTING AND STEELING STOCK ON LAYER OF COMPACTED PLANTING SOIL. EXTERIOR PLANTS AND IN CENTER OF PIT OR POSITIONAL BACKFILL AROUND BALL AND END OF BALL TO 1" SPACED HOLES AND AIR ACCURATELY. BEST EXCAVATION IS APPROXIMATELY 3/4" BALL WATER THOROUGHLY. 1" FRESH PLANTING SOIL. EXCAVATION WITH NO AIR. REMOVE EXCESSIVE SUBGRADE EXCAVATIONS. DO NOT MIX WITH PLANTING SOIL OR USE AS BACKFILL. REMOVE EXCESSIVE SUBGRADE EXCAVATIONS. DO NOT MIX WITH PLANTING SOIL OR USE AS BACKFILL. REMOVE EXCESSIVE SUBGRADE EXCAVATIONS. DO NOT MIX WITH PLANTING SOIL OR USE AS BACKFILL.
 SET CONTAINER GROWN STOCK AS SPECIFIED FOR BALLS AND BURLAP STOCK. EXCEPT ONE CASE ON 1" BARS FROM AN APPROVED CAN SYSTEM. REMOVE BOTTOMS OF EXCESSIVE BARS. AFTER PLANTING, BACKFILL TO 1/2" AS NOT TO DAMAGE ROOT BALLS.
 FOR SPRING PLANTING PROVIDE ADDITIONAL BACKFILL SOFT AROUND EDGE OF EXCAVATIONS TO FORM A SHALLOW BASIN TO COLLECT WATER.
 FRESH PITA TRIMMED AND PLANTED AREAS. PROVIDE NOT LESS THAN A 1" INCH. MORE OF FRESH AND SOAK INTO TOP OF BACKFILL AND FRESH LEVEL WITH ADJACENT FRESH GRADES.
 PRUNE, TRIM OUT AND SHAPE TREES AND SHRUBS IN ACCORDANCE WITH STANDARD VERTICAL TRIMMING. PRUNE TO OBTAIN THE REQUIRED HEIGHT AND SPREAD. DO NOT CUT TREE LEADERS AND REMOVE ONLY BRANCHED OR DEAD BRANCHES.
 CUT AND STAKE TREES PROMPTLY AFTER PLANTING AS PER DETAIL.
 WATER PLANTING IMMEDIATELY AFTER PLANTING.
 MAINTENANCE:
 PLANT TREES AND SHRUBS AND OTHER PLANTS UNTIL PAUL ACCEPTANCE BUT IN NO CASE LESS THAN 14 DAYS AFTER PLANTING. PLANT TREES AND SHRUBS AND OTHER PLANTS BY PRUNING, CULTIVATING AND WEEDING AS REQUIRED FOR HEALTHY GROWTH. REMOVE PLANTING BRANCHES.
 LIGHTEN AND REPAIR STAKE AND GUY SUPPORTS AND RESET TREES AND SHRUBS TO PROPER GRADES OR VERTICAL POSITION AS REQUIRED.
 SPRAY AS REQUIRED TO KEEP TREES AND SHRUBS FREE FROM INSECTS AND DISEASE.
 REMOVE LANDSCAPE WORK FROM SITE. REMOVE MATERIALS AND EQUIPMENT WHERE DIRECTED. KEEP PAVEMENT CLEAN AND MARK AREA IN AN ORDERLY MANNER.
 PROTECT LANDSCAPE AREA AND MATERIALS FROM DAMAGE DUE TO LANDSCAPE OPERATIONS. OPERATIONS BY OTHER CONTRACTORS AND TRADE AND PREPARATION. TAKE AN PROTECT DURING INSTALLATION AND MAINTENANCE PERIODS. TRIM, REPAIR OR REPLACE DAMAGED LANDSCAPE WORK AS DIRECTED.
 NOTIFICATIONS AND ACCEPTANCE:
 WHEN THE LANDSCAPE WORK IS COMPLETED. THE BUILDER OR GENERAL CONTRACTOR SHALL NOTIFY OWNER OF FURTHER REQUIREMENTS.

LANDSCAPE PLAN EAST

SCALE 1" = 20'
 REQUIRED LANDSCAPE PERCENTAGES:
 SEE SHEET G-000 TITLE SHEET FOR PAVING, BUILDING & LANDSCAPE PERCENTAGES



PLANT LIST

KEY	BOTANICAL NAME	COMMON NAME	SIZE	QTY	COMMENTS
SP	STEWARTIA PVEDOCAMILLA	JAPANESE STEWARTIA	6"HT	7	MULTI-TRUNKED
TC	TILIA CORDATA	GREENSPRUE' LINDEN	2 1/2" cal	9	SPECIMEN
BT	BORBERIS TRUNBERGII 'ATROPURPUREA'	JAP. RED LEAF BARBERIS	3" cal	25	WELL BRANCHED
CH	COTONASTERIA HORIZONTALIS	ROCK COTONEASTER	1" cal	361	PLANT 4" O.C.
CO	CERIS OSHIMENSIS	SEDS' BURGUNDY EMBER	1" cal	38	WELL BRANCHED
CS	CERAS STOLONIFERA	RED TWIG DOGWOOD	3" cal	28	WELL BRANCHED
CK	CORUS STOLONIFERA 'KELSEYII'	WELLS' RED TWIG DOGWOOD	1" cal	20	WELL BRANCHED
ERC	EUCHIMISALATA COMPACTA	COMPACT BURNING BUSH	3" cal	14	WELL BRANCHED
CD	CALEDONIA DECORANS	INCENSE CEDAR	5" HT	12	WELL BRANCHED
PA	PENNSYLVANIA ALPHEOIDES 'HANELI'	HANELI' FOUNTAIN GRASS	1" cal	29	WELL BRANCHED
PI	PIERIS JAPONICA 'MOUNTAIN FIRE'	MOUNTAIN FIRE' ANDROMEDA	3" cal	7	WELL BRANCHED
SD	SP. LA DOUGLASH	WESTERN DOGWOOD	3" cal	61	WELL BRANCHED
PH	PSEUDOTSUGA MUIZENSII	DOUGLAS FIR	6" HT	9	WELL BRANCHED
ZS	ZELKONA SPERATA 'VILLAGE GREEN'	VILLAGE GREEN' ZELKOVA	2 1/2" cal	19	SPECIMEN

ADDITIONAL PLANTING NOTES:
 • ALL SHRUBS SHALL BE A MINIMUM OF 24" IN HEIGHT FROM FINISH GRADE AT PLANTING.
 • ALL PLANTINGS TO BE GUARANTEED TO BE IN GOOD CONDITION FOR ONE YEAR AFTER FINAL INSPECTION.
 • ALL PLANT MATERIAL TO BE NURSERY GROWN MATERIAL & MEET ANSI STANDARDS.

2011-021
 PREPARED BY: PAUL TUBEL, A+LA
 LANDSCAPE ARCHITECT
 10519 SW PORTLAND ST., PORTLAND, OR 97225
 (503) 203-1344

© AXIS DESIGN GROUP
 THESE DRAWINGS ARE THE PROPERTY OF THE DESIGN GROUP AND ARE NOT TO BE REPRODUCED OR IN ANY MANNER WITHOUT THE WRITTEN APPROVAL OF AXIS DESIGN GROUP

AXIS
 DESIGN GROUP
 ARCHITECTURE & ENGINEERING, INC.

WHITNEY & ASSOCIATES
 ARCHITECTURE & ENGINEERING, INC.
 52 NW 2ND STREET
 GRESHAM, OR 97030
 T: 503.667.4232 | F: 503.618.9843



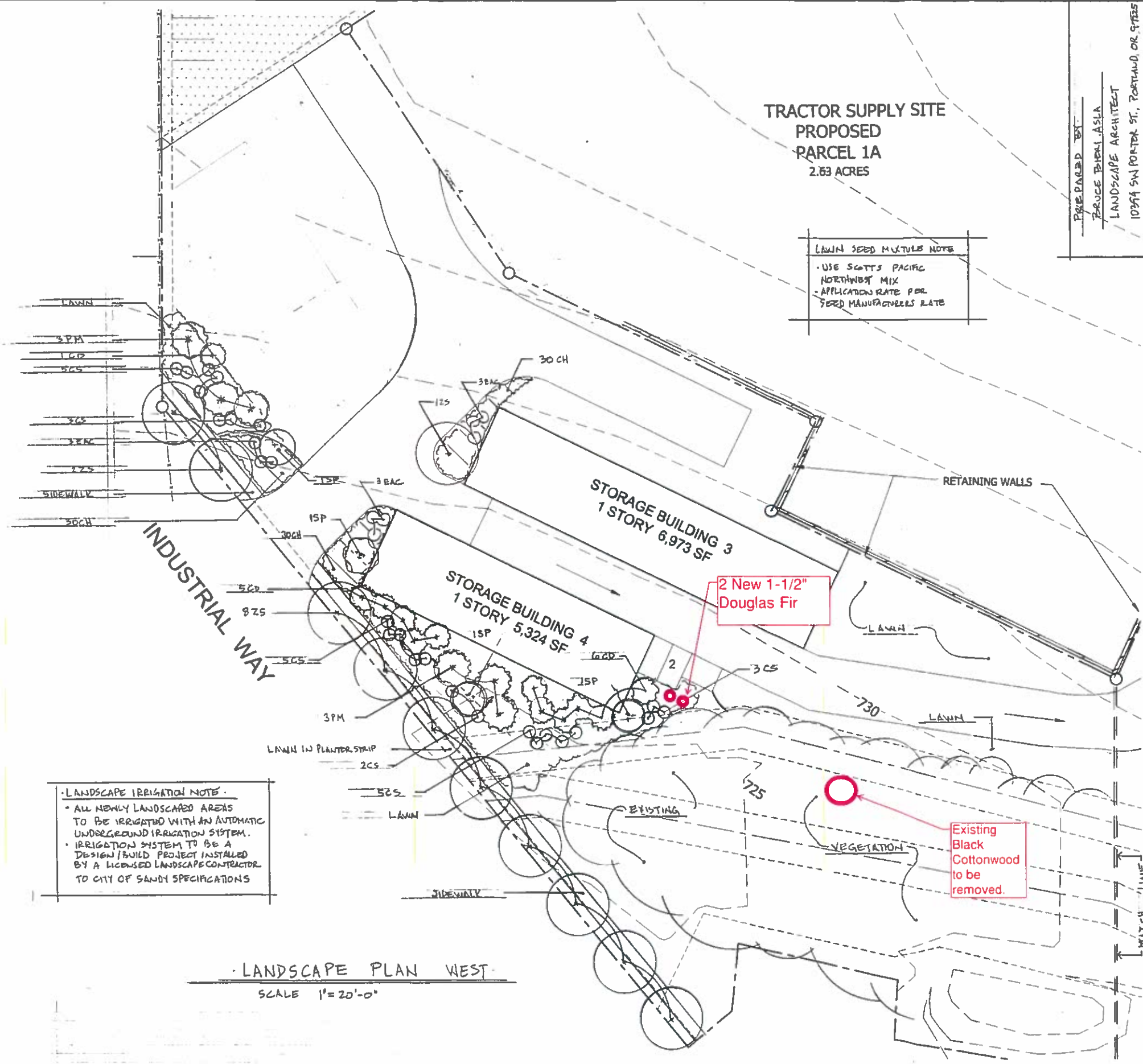
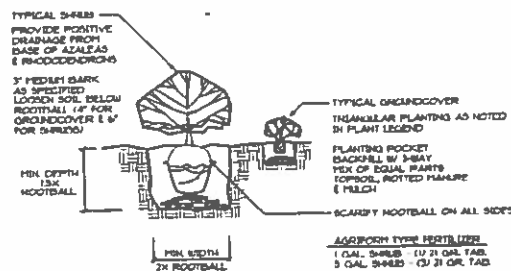
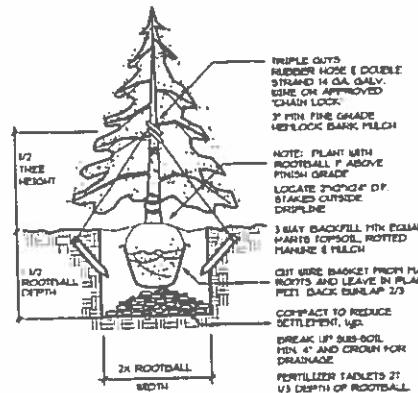
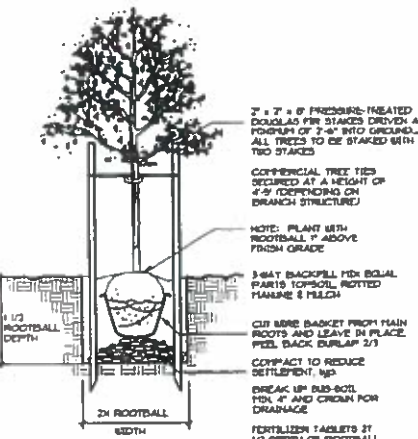
SANDY STORAGE
 SANDY, OREGON

REVISIONS

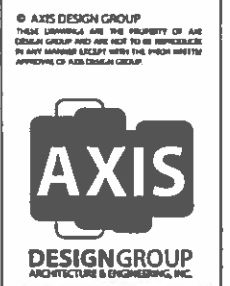
No.	Description	Date
1	45 TREES	12-7-13
2	45 TREES	12-7-13
3	REVISIONS PER COMMENTS	12-17-13

DRAWN BY: BB
 CHECKED BY: BB
 JOB NO: 17-034
 DATE: 9/12/18
 ISSUED FOR: DESIGN REVIEW
 SHEET TITLE: LANDSCAPE PLAN EAST
 SHEET NO.:

L1



PREPARED BY:
BRUCE BEHRELL ASLA
LANDSCAPE ARCHITECT
10364 SW PORTER ST., PORTLAND, OR 97225
(503) 203-1844



WHITNEY & ASSOCIATES
52 NW 2ND STREET
GRESHAM, OR 97030
T. 503.667.4252 | F. 503.618.9942



SANDY STORAGE
SANDY, OREGON

REVISIONS

No.	Description	Date
1	SITE PLAN	
2	LANDSCAPE	10-8-18
3	REVISIONS	
4	CONDITIONS OF APPROVAL	10-12-20

DRAWN BY: BB
CHECKED BY: BB
JOB NO: 17-034
DATE: 9/12/18
ISSUED FOR: DESIGN REVIEW
SHEET TITLE: LANDSCAPE PLAN

SHEET NO.
L2